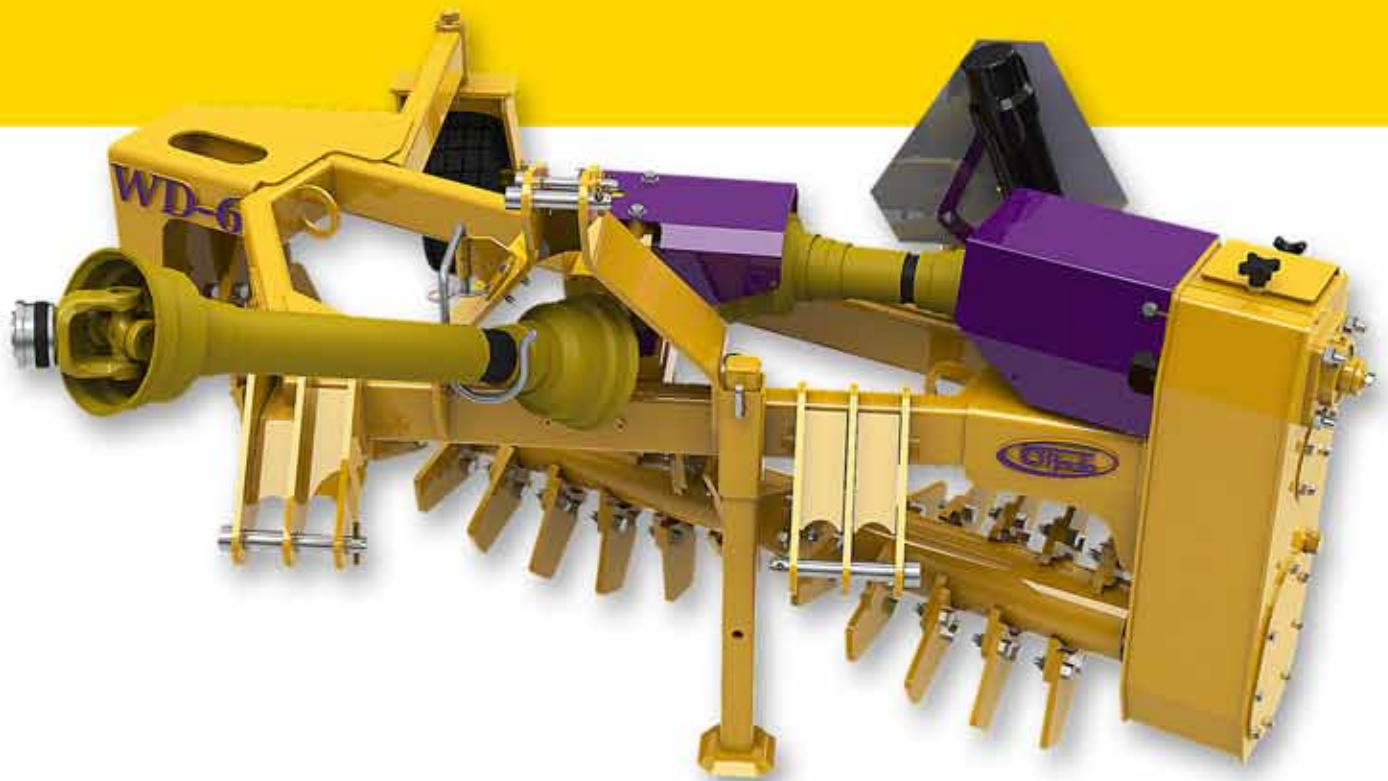




Rock Rake WD-6

Owner's and parts manual



R0106-00001

www.shoule.com

may 2011

R-60010





Introduction 5

Safety 6

Decals..... 11

Operation..... 13

Adjustments and Maintenance 16

Service Record 20

Parts 21

Overall view 22

Guards assembly..... 24

Frame assembly 26

Drive components..... 28

Teeth assembly..... 30

Wheel assembly 32

Wheel support assembly 34

PTO Bracket assembly 36

PTO - T60 with Torque limiter / R-06018 38

Torque Limiter Series 60-F2/ 06095 40

PTO - T60 Quick disconnect / 06047 42

Gearbox Comer T-304A / 06029 44

Warranty 46

Product registration 47





Congratulations on your purchase of your new **Fabrication S. Houle inc.** equipment!

This equipment will advantageously complement your agricultural machinery. It has been designed and built specifically for an agricultural market that is always in need of more efficient, better performing equipment.

This **Owner's Manual** is your principal reference in regards to your new equipment. To ensure your equipment delivers many years of quality use, it is important that you follow the use and maintenance guidelines set out in this manual. We urge you and those who will be using and/or performing maintenance on this equipment to ensure that **you have read and understood the contents of this manual prior to first use.**

Please keep this **Owner's Manual** within reach so that you may quickly consult it, as often as necessary. In case of ownership transfer, please ensure that you also remit this manual to the new owner or user.

Should you have any questions, or to obtain more information or additional copies of this manual, please contact us at:

Fabrication S. Houle Inc.

300 Industrial Boulevard
St-Germain-de-Grantham, Qc. Canada J0C 1K0
Tel.: (819) 395-4380 Fax: (819) 395-5516
Toll Free: 1-888-404-4380
Email: info@shoule.com
Web: www.shoule.com

Locate this symbol – it could save your life

This symbol is the standard safety symbol. You will find it on most of the decals on your equipment. It is also used throughout this manual.

This symbol is used mainly to draw your attention and to warn you of possible dangers and/or potential injuries.

It is vital that you read and understand completely the following instructions and safety rules prior to using your equipment.



The safety symbol accompanied by the word “DANGER” indicates an immediate danger capable of causing serious injury or death.



The safety symbol accompanied by the word “WARNING” indicates a potential danger capable of causing serious injury or death.



The safety symbol accompanied by the word “CAUTION” indicates a potential danger capable of causing injury.

Being well informed is your best protection against accidents. It is therefore important that you give particular attention to the safety guidelines presented in this manual.

Think SAFETY! Work SAFELY!



As the owner of this equipment, you are responsible for the safety of its users and those who are responsible for its maintenance. You and any other person using or performing maintenance on this equipment must be familiar with its operation and maintenance, as well as the safety measures contained in this manual. Having safe working practices guarantees a safer work environment.

The owner of this equipment must inform any user of any and all instructions related to proper operation and use of this equipment, prior to first use.

The user must read, understand and respect all operating and safety instructions contained in this manual. A user who is unaware or ignores the operating and safety instructions contained herein is not qualified to operate this equipment, and exposes him/herself and bystanders to possible serious injury and or death.

Do not in any way modify this equipment. Unauthorized modifications could impair the proper functioning and/or safety of this equipment and possibly affect its useful life as well.

General Safety Measures

1. Read and understand all operating and safety instructions and guidelines contained in this manual prior to using, maintaining or adjusting the equipment.
2. Ensure all safety guards and shields are properly installed prior to using the equipment.
3. Always have a first aid kit within reach, and know how to use it.
4. Always have a fire extinguisher within reach, and know how to use it.
5. Wear appropriate safety gear, such as: hard hat, safety boots, safety goggles, gloves, ear plugs, etc.
6. Clear the area of people, especially children, prior to engaging the equipment.

Operating Safety

In addition to reading and fully understanding this manual,

you should:

1. Lower the rock rake, stop the tractor's engine, set controls to neutral, engage the emergency brake, remove the tractor's ignition key and wait for all moving parts to come to a full stop prior to adjusting, detaching or servicing the rock rake.
2. Keep hands, feet, hair and all clothing away from all moving parts and/or rotating parts.
3. Do not allow passengers on the rake or tractor.
4. Do not remove protective guards or shields. Ensure they are in place and properly attached.
5. Clear the area of all people, especially small children, prior to engaging the rake and/or the tractor.
6. Do not operate the rake on steep hills or slopes.
7. Be extremely cautious while servicing or while near high pressure hydraulic systems. Ensure all components are fully sealed and in good working order prior to operating the equipment.
8. Ensure all reflectors, lights and the safety triangle are clean prior to transportation on public roads. Check with local authorities to ensure you are compliant with all lighting requirements.
9. Stay well away from the rock rake while it is in operation to avoid being hit by flying rocks and/or debris that may be ejected into the air.

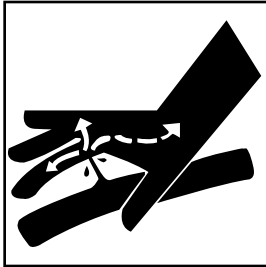


Maintenance Safety

In addition to reading and fully understanding this manual, you should:

1. Lower the rock rake, stop the tractor's engine, set controls to neutral, engage the emergency brake, remove the tractor's ignition key and wait for all moving parts to come to a full stop prior to adjusting, detaching or servicing the rock rake.
2. Keep hands, feet, hair and all clothing away from all moving parts and/or rotating parts.

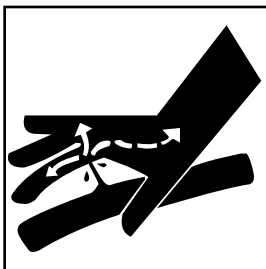
3. Clear the area of all people, especially small children, prior to engaging the rake and/or the tractor.
4. Place safety stands or blocks underneath the frame prior to removing the tires or working underneath the rock rake.
5. Be extremely cautious while servicing or while near high pressure hydraulic systems. Ensure all components are fully sealed and in good working order prior to operating the equipment. Wear appropriate safety gear to protect your eyes and hands. Use a piece of wood or cardboard as a shield when examining a hose or fitting for a leak.
6. Always relieve pressure prior to disconnecting or servicing hydraulics.
7. Always use original parts when any need replacing.
8. Do not in any way modify this equipment, its components or its intended use. Fabrication S.Houle inc. will not be held responsible should breakage or injury occur as a result of using any non-approved parts or accessories.
9. Do not operate equipment that is defective or that has parts missing.
10. Inspect nuts and bolts regularly and ensure they are tightly secured.



Hydraulic System Safety

In addition to reading and fully understanding this manual, you should:

1. Always set the hydraulic controls to neutral prior to disassembling the hydraulic system.
2. Be extremely cautious while servicing or while near high pressure hydraulic systems. Ensure all components are fully sealed and in good working order prior to operating the equipment. Wear appropriate safety gear to protect your eyes and hands. Use a piece of wood or cardboard as a shield when examining a hose or fitting for a leak.



Transportation Safety

In addition to reading and fully understanding this manual, you should:

1. Check with local authorities to ensure you are compliant with all machinery transportation safety requirements.

Storage Safety

1. Store the rock rake in an area well away from human activity.
2. Store the rock rake in the lowered position.
3. Do not allow children to play near the stored rock rake.

Tire Safety

1. Failure to follow appropriate directions while installing a tire on a wheel or rim may result in a blow-out, which could cause serious injury or death.
2. Never attempt to install a tire unless you have the materials and equipment required and have appropriate experience to do so.
3. See a well known tire repair facility or dealer for any repair or maintenance work required.



Decal Images



1

2

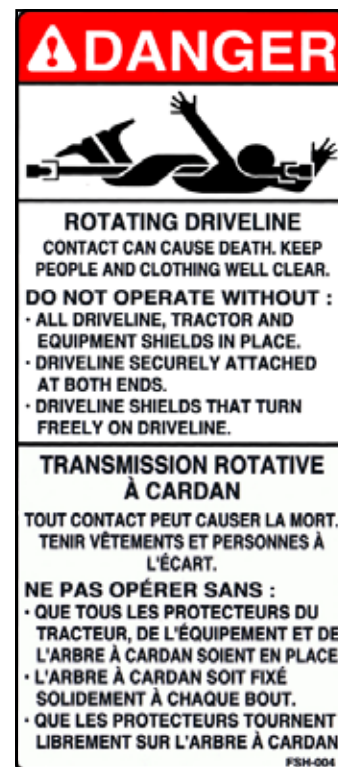


Here are images of the safety decals you will find on your WD-6 rock rake. For your safety and protection, please ensure that these decals are always present and legible.



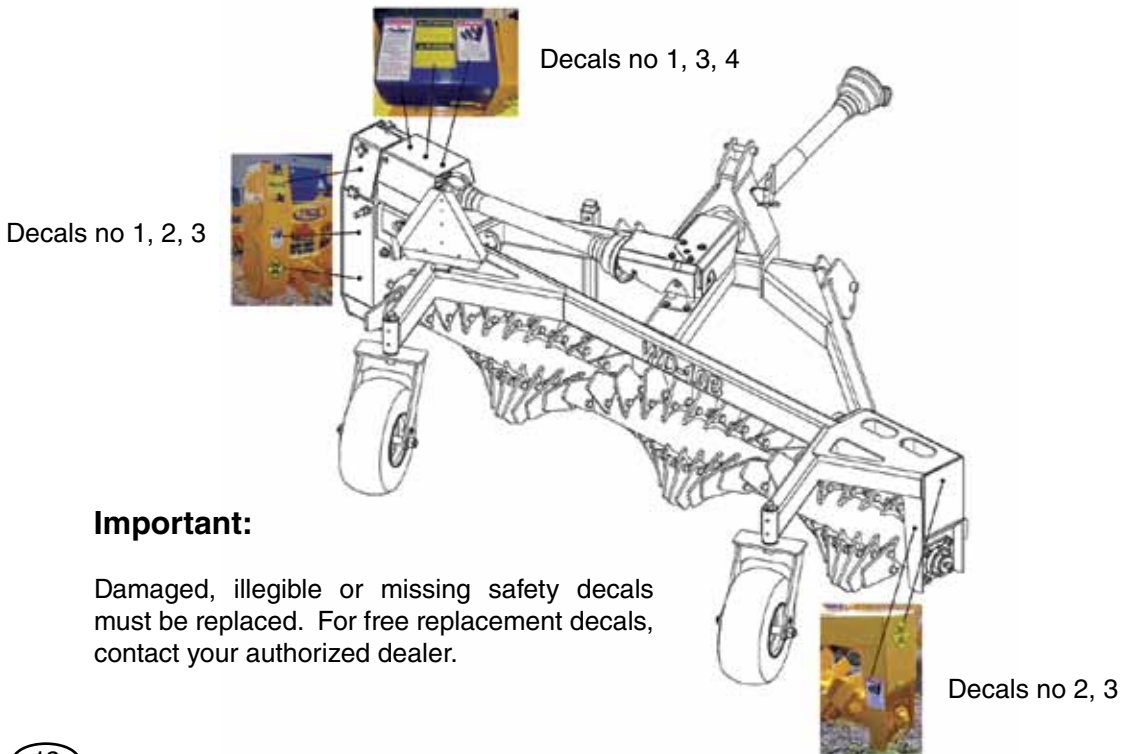
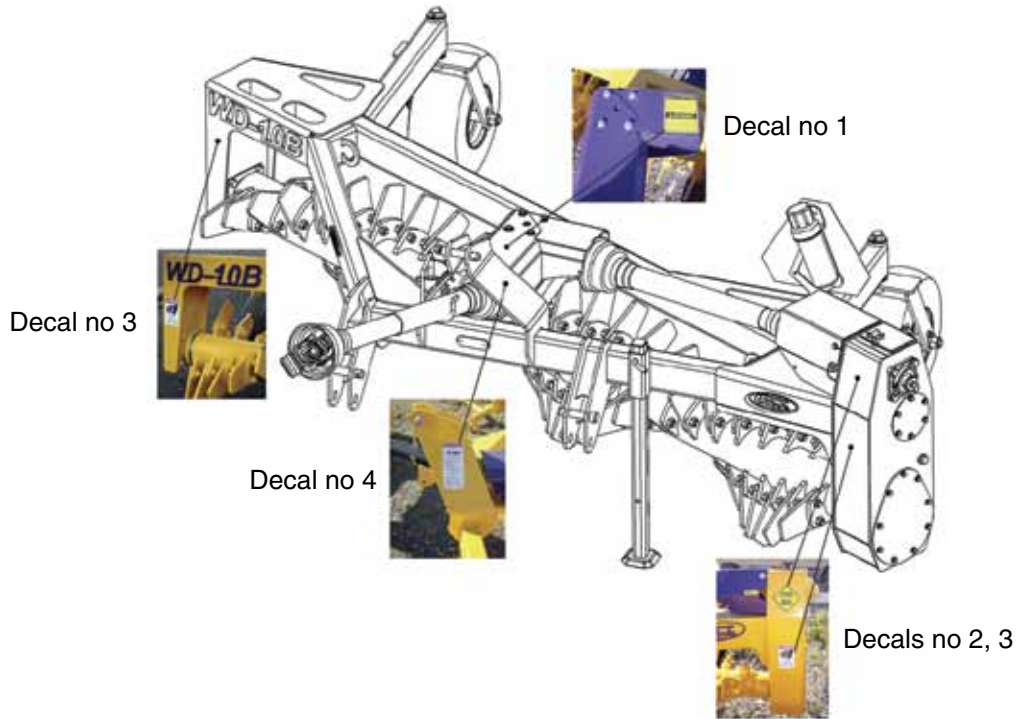
3

4



11

Decals Location



Important:

Damaged, illegible or missing safety decals must be replaced. For free replacement decals, contact your authorized dealer.



To the New Operator or Owner

The Fabrication S.Houle WD-6 Rock Rakes are designed to efficiently windrow rocks from 2 to 12 inches (50 to 300 mm) diameter. Many of the features incorporated into this machine are the result of suggestions made by customers like you.

It is the owner or operator's responsibility to read this manual carefully to learn how to operate the machine safely and how to set it to provide maximum efficiency. Safety is everyone's business. By following safe operating practices, a safe environment is provided for the operator and bystanders.

By following the operating instructions in conjunction with a good maintenance program, your Rock Rake will provide many years of trouble-free service.

Principles of Operation

The machine has a rotating drum that has a spiraling set of teeth bolted to it. As the drum rotates and the machine moves along the field, the teeth move the rocks along the front of the drum to form a windrow of rocks on the right side. The drum is turned by the PTO from the towing vehicle.

Operation

Familiarize yourself with the various settings of the Rock Rake that are designed to allow the machine to work in a variety of field conditions. Field experience will indicate the combination of machine and operating condition to give a quality job. This section will cover the interaction of the field conditions and machine settings.

1. Operator's Responsibility

Every operator should read this manual and be instructed in safe operating procedure. An untrained operator is not qualified to operate this machine and could place themselves or bystanders in danger.

2. Field Conditions

2a. Rock Density

Rate the rock density as light, medium or heavy. Normally the machine ground speed will decrease as the rock density



increases to insure that the teeth on the spiral drum have the opportunity to make contact with each rock.

2b. Soil Condition

Dry, firm ground is ideally suited for raking.

Soft ground will require adjustments to the angling of the spiral drum to insure that the soil can fall between the teeth on the right end and not be moved into the windrow.

Wet soil will ball up with the rocks and can plug the teeth. Give the soil more time to dry before raking.

It is recommended that the teeth on the left end of the drum penetrate the ground about 2 inches (50mm).

3. Drum Rotation

The drum rotates at 130 RPM when the tractor PTO speed is 540 RPM. Changing the engine speed changes the drum RPM. It is recommended that the PTO/Drum speed always be run at rated RPM and the ground speed be varied by changing gears in the tractor.

4. Forward Speed

The recommended ground speed varies from 2 to 6 mph (3,2 - 9,7 km/h) and is determined by rock density and size. When you see that rocks are being missed behind the machine, slow down. Increase the speed when the rock density decreases.

5. Transporting

Be sure the SMV sign is facing to the rear.

Clean the SMV sign, lights, and reflectors.

Always use the hazard flashers on the tractor when transporting.

Slow down and pull off to the side of the road when meeting other traffic.

Do not exceed 20 mph (32 km/h) when transporting. Never exceed a safe travel speed. Slow down when cornering or on rough roads.



Do not allow riders on the machine or tractor when transporting.

6. Storage

After the season's use, completely inspect all major systems of the machine. Repair or replace any worn or damaged components to prevent unnecessary down time at the beginning of next season. The machine should be carefully prepared for storage to insure that all dirt, mud, debris and moisture has been removed.

Follow this procedure when preparing for storage:

1. Wash the entire machine thoroughly using a water hose or pressure washer to remove all dirt, mud debris or residue.
2. Inspect all moving or rotating parts to see if anything has become entangled in them. Remove the entangled material.
3. Lubricate all grease fittings to remove any moisture in the bearings.
4. Run the machine slowly for 1 minute to distribute lubricant to all surfaces.
5. Inspect all hydraulic hoses, fittings, lines and couplers. Tighten any loose fittings. Replace any hose that is badly cut, nicked or abraded or is separating from the crimped end of the fitting.
6. Touch up all paint nicks and scratches to prevent rusting.
7. Oil the exposed rams on the hydraulic cylinders to rusting.
8. Select an area that is dry, level and free of debris.



While there are no operating restrictions when the rock rake is new, there are certain mechanical checks you should perform to ensure the rake's optimal performance.

Prior to First Use

1. Read this owner's manual carefully.
2. Lubricate all grease points.
3. Check all nuts, bolts and hardware.

After Two (2) Hours of Use

1. Tighten wheel bolts.
2. Check all hardware.
3. Check all hydraulic system fittings.

After Eight (8) Hours of Use

1. Lubricate the chain.
2. Check gear box oil level.
3. Lubricate all universal joints.

After Twenty-five (25) Hours of Use

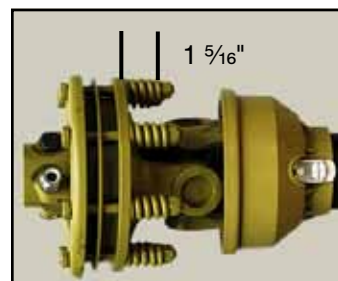
1. Lubricate chain bearings.
2. Lubricate spiral drum bearings.
3. Lubricate wheel pivots.

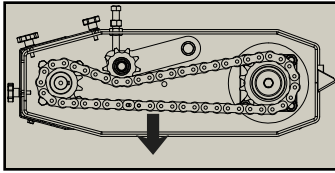
Inverting the Rock Rake's Teeth

The spiral drum's teeth have been designed to be easily inverted when one side becomes too worn. To invert, remove the bolts. Turn the tooth over and simply bolt it back into place securely, with stover nuts ($\frac{3}{4}$ "-16NF x 2" bolts with $\frac{3}{4}$ "-16NF stover nuts). While facing the rock rake, place the tooth on the left side of its support. Fasten the bolts at about 215 lbs/ft (291 Nm).

Adjustments

Periodically check to ensure the clutch springs tension is set at approximately $1 \frac{5}{16}$ ".





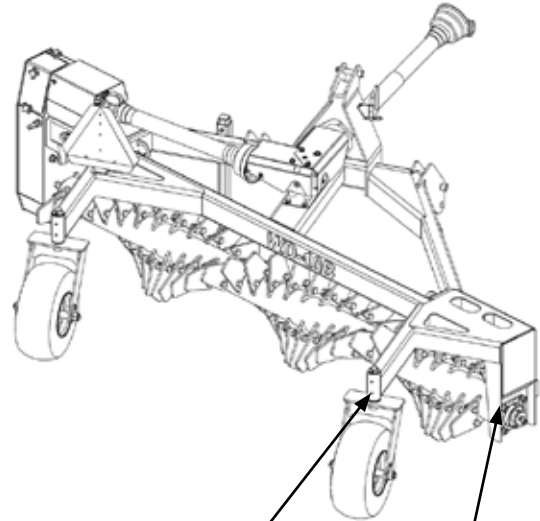
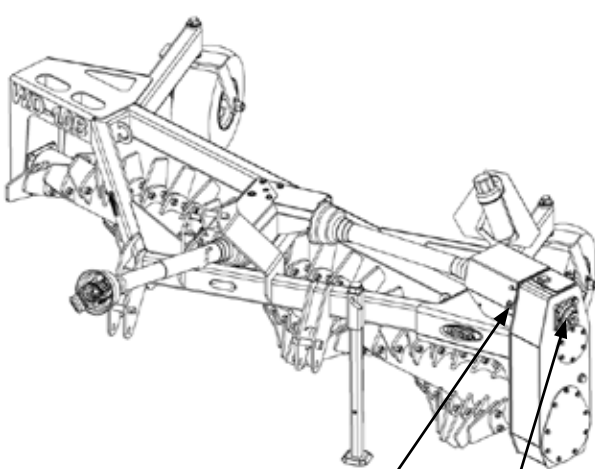
Adjustments (continued...)

Adjust the chain tension regularly, ensuring there is no more than 1/2" sag in the lower span (see illustration on right).



Greasing

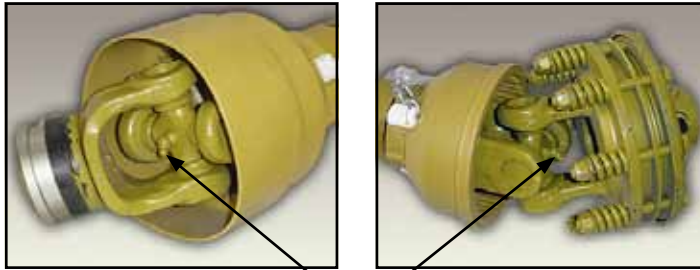
Locate the greasing decals (see illustration on left).



Remove cover to grease the spiral drum's bearing.

Greasing (continued...)

The universal joints located on the PTO must be greased after 8 hours of use.



Grease point

During lubrication:

1. Use a manual grease gun.
2. Clean the couplers and fittings with a clean cloth prior to lubricating.
3. Replace and repair damaged or broken couplers.
4. If couplers are difficult to lubricate, remove them so as to be able to clean them thoroughly, and replace them if necessary. Also clean the lubricant passageway.
5. Inject lubricant until the excess is expelled through the bearing or bushing areas.

Types of Lubricants

1. Grease

Use an SAE multi-purpose high temperature grease with extreme pressure (EP) performance. A lithium-based SAE multi-purpose grease is also acceptable.

2. Gear Box Reservoir Oil

Use an SAE compatible 80W90 gear oil for all operating conditions. Reservoir capacity: 2 litres.

3. Chain Lubrication

The transmission's chain must be lubricated every 8 hours of



use, using the lubricant provided, stored in the rake's storage compartment. Always use a lubricant designed for use on pin bushings and transmission chains.

4. Lubricants Storage

Always use clean and contaminant-free lubricants. Store them in clean, uncontaminated containers that have not been used to store other substances. Ensure the storage area is free of dust, humidity and other contaminants.



Introduction

All parts illustrated on the following pages are shown in exploded view, in order to show the positioning of parts relative to one another.

Each exploded view is accompanied by a descriptive page on which the following information can be found:

Item:

This number corresponds to the part number as shown in the exploded view.

Part No:

This number is used to order a part.

Description:

Brief description of the part.

Quantity (Qty):

Number of identical elements found in the exploded view.

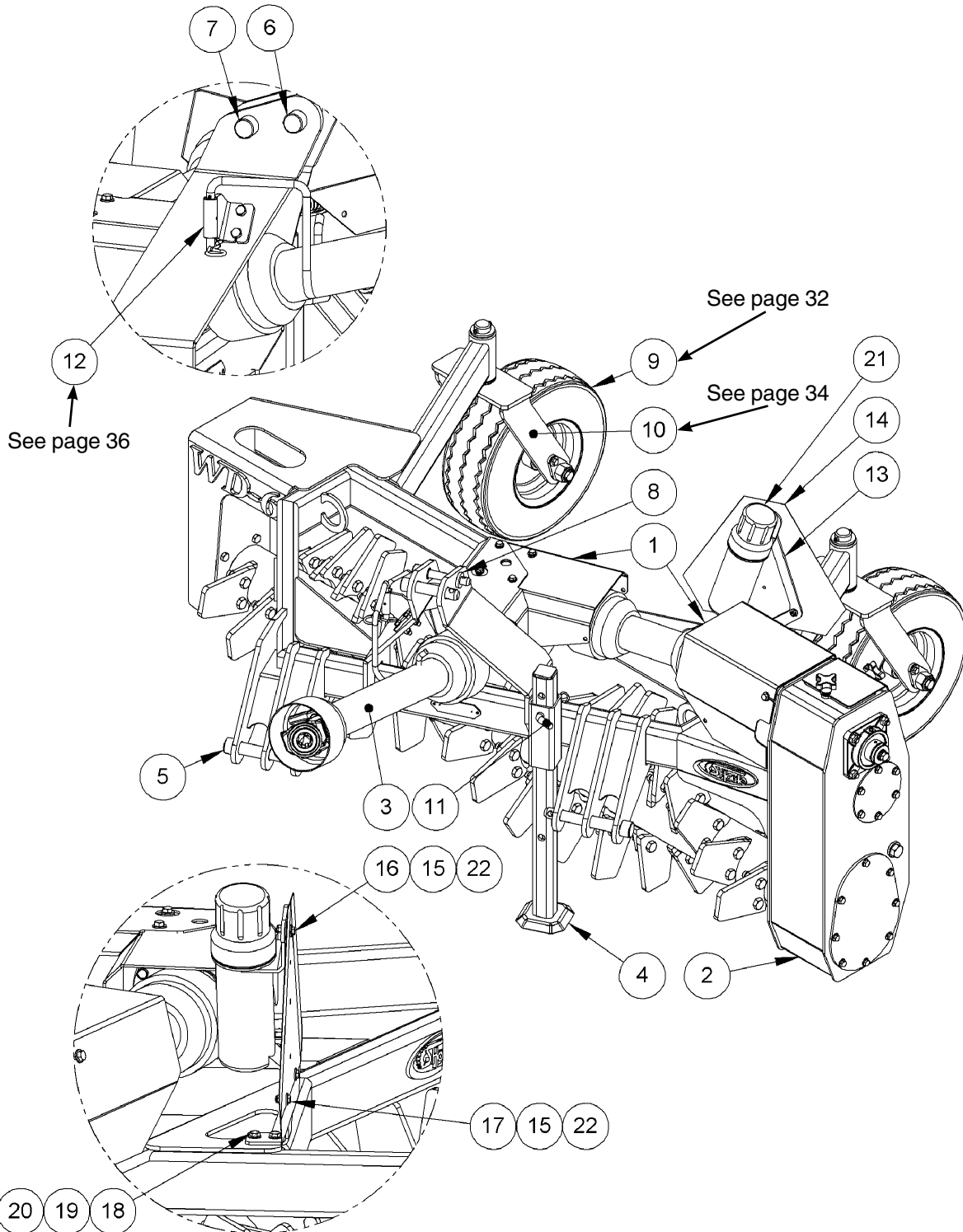
Left Side Vs. Right Side

The left and right sides of the equipment are defined by the operator's position seated within the tractor while looking at the equipment in operating position.

Changes and Modifications

Please note that Fabrication S. Houle inc. reserves the right to change, modify or eliminate certain components, in order to improve its products, and this, without prior notice, responsibility or obligation on their part.

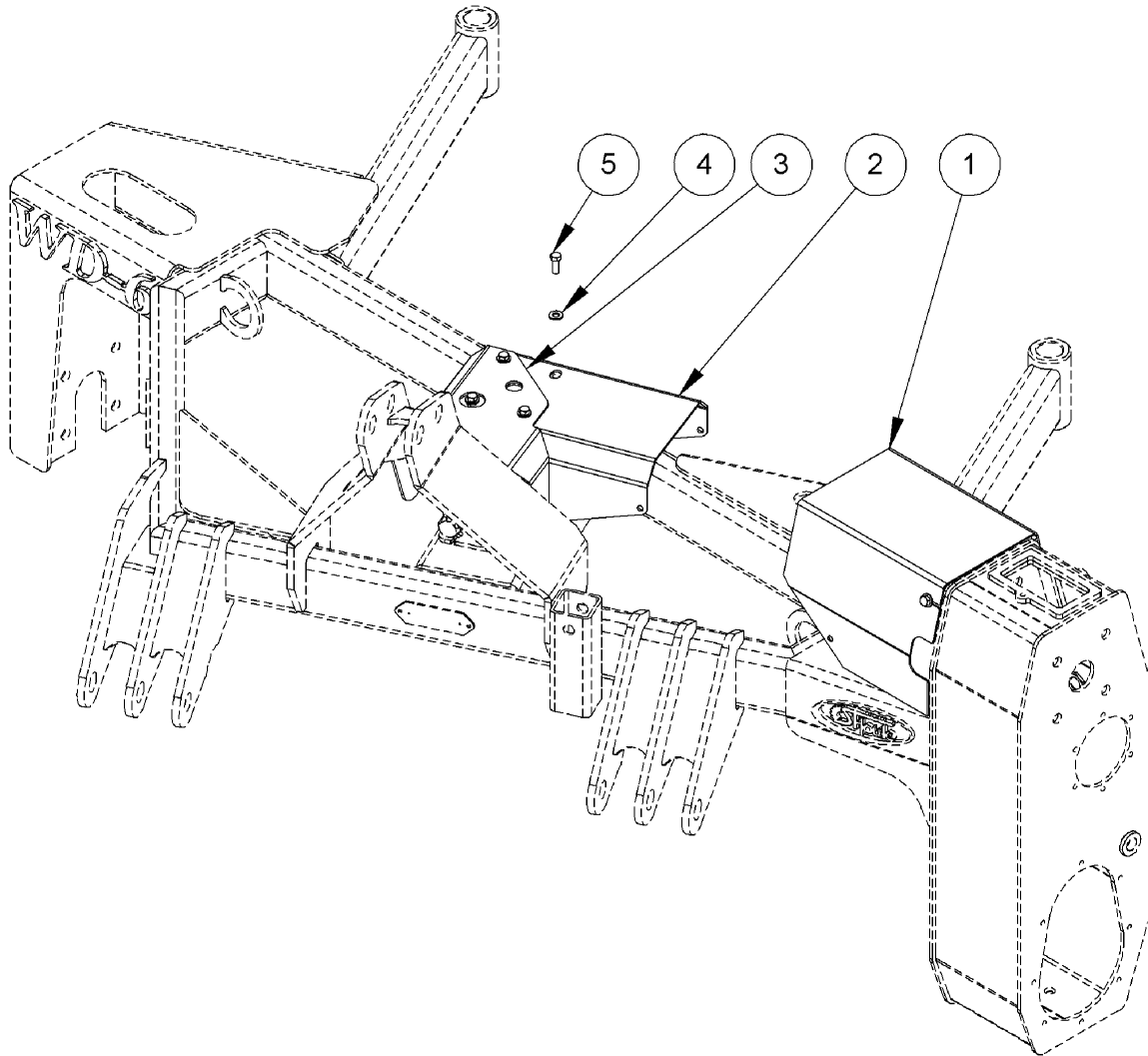
Overall view



22

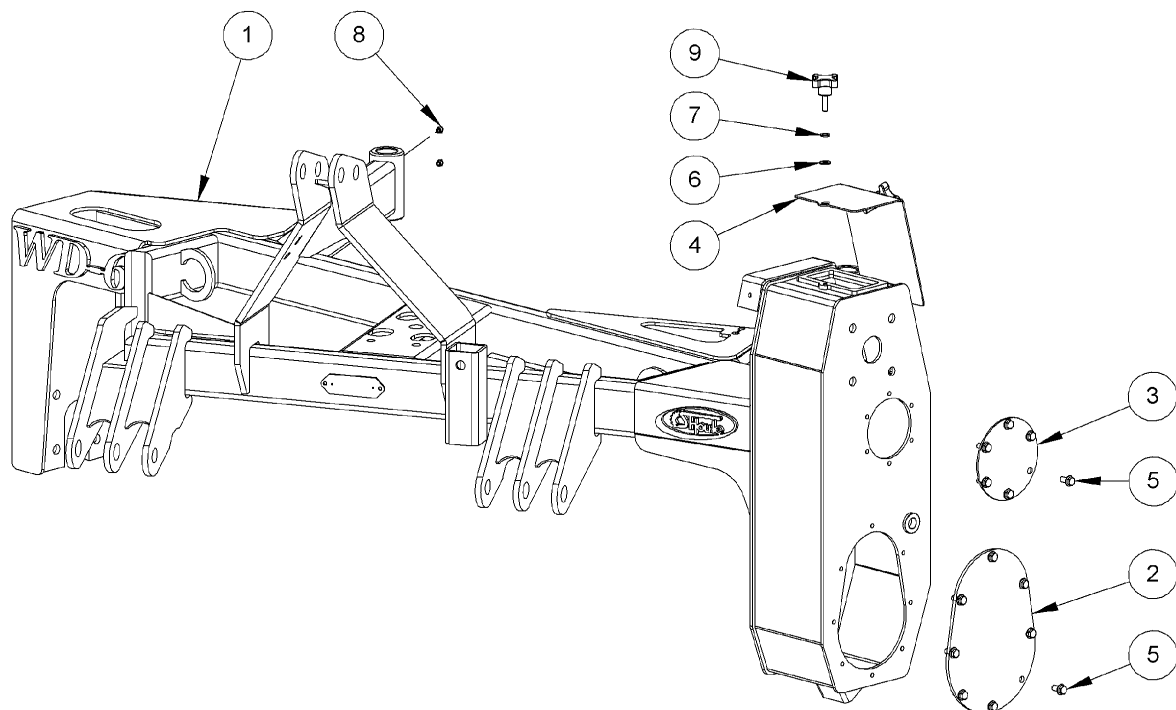


<i>Item</i>	<i>Part No.</i>	<i>Description</i>	<i>Qty</i>
1	R0106-04E01	Guards assembly WD-6	1
2	R0106-05E01	Frame assembly WD-6	1
3	R0106-06E01	WD-6 Drive components	1
4	R-43017	Stand WD-6	1
5	UN-25016	3 pts hitch pin 1" (Bottom)	2
6	UN-25017	3 pts hitch pin 1" x 5 1/2" (Top)	1
7	UN-25018	3 pts hitch pin 3/4" (Top)	1
8	UN-26012	Bushing for Cat.#1 (Top)	1
9	R-03E03	Wheel and axle ass'y TL 16.5 x 6.5	2
10	R-03E04	Wheel support assembly	2
11	35011	Bent pull pin 5/8" x 3"	1
12	R-43E01	PTO Bracket	1
13	UN-36001-2	S.M.V.S. Bracket	1
14	36002	Slow Moving Vehicule Sign	1
15	46AA004	Flat washer 1/4"	6
16	45AA004200100	Hex. bolt 1/4"-20NC x 1" gr5	2
17	45AA004200012	Hex. bolt 1/4"-20NC x 3/4" gr5	1
18	45AE006160104	Flange bolt 3/8"-16NC x 1"	2
19	46AB006	Tempered flat washer 3/8"	2
20	47AB00616	Nylon lock nut 3/8"-16NC	2
21	36001	Plastic case	1
22	47AB00420	Nylon lock nut 1/4"-20NC	3



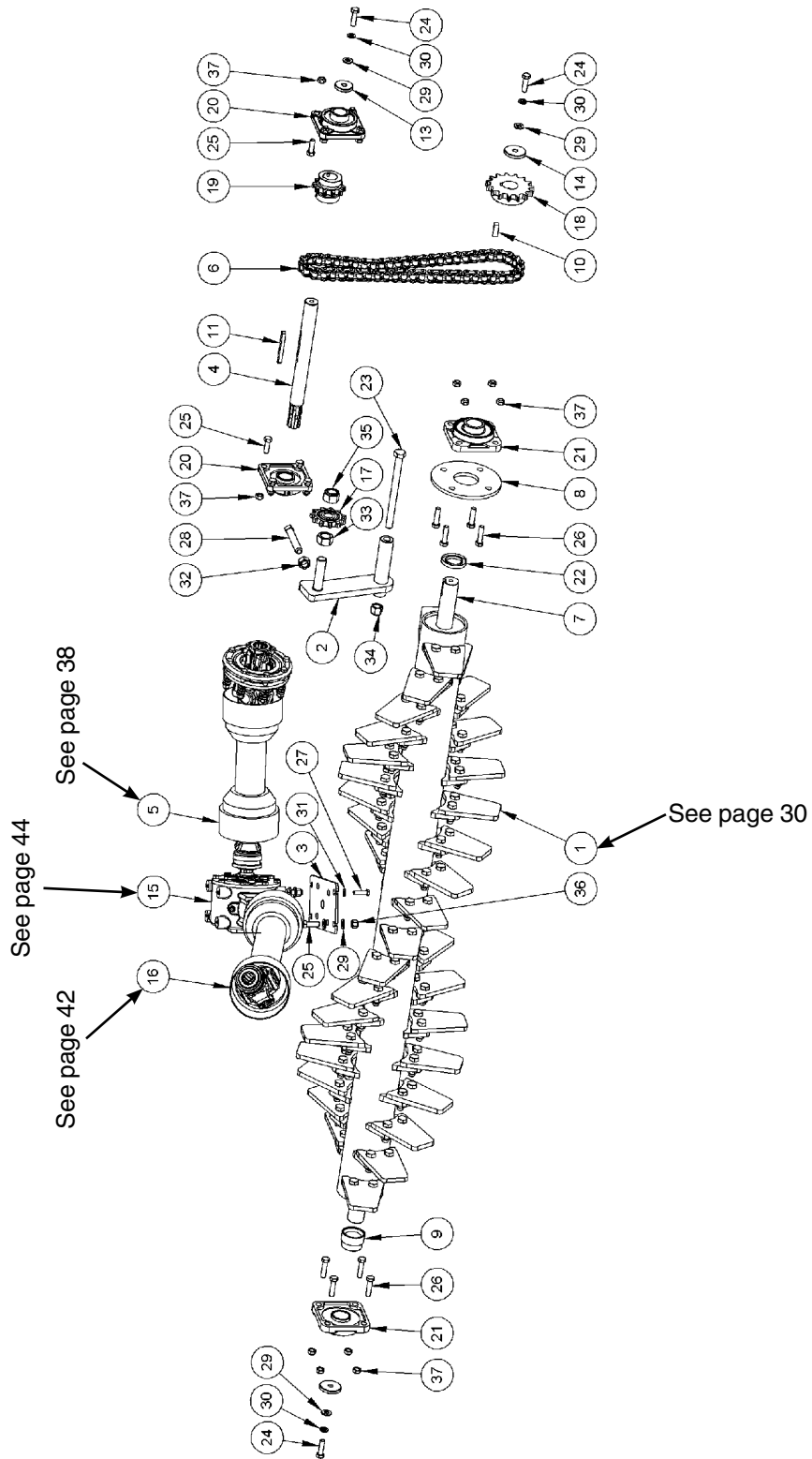


<i>Item</i>	<i>Part No.</i>	<i>Description</i>	<i>Qty</i>
1	R-04001	Torque limiter guard	1
2	R-04003	Gearbox guard	1
3	R-04041	Gearbox guard	1
4	46AB006	Tempered flat washer 3/8"	6
5	45AA006160100	Hex. bolt 3/8"-16NC x 1" gr5	6



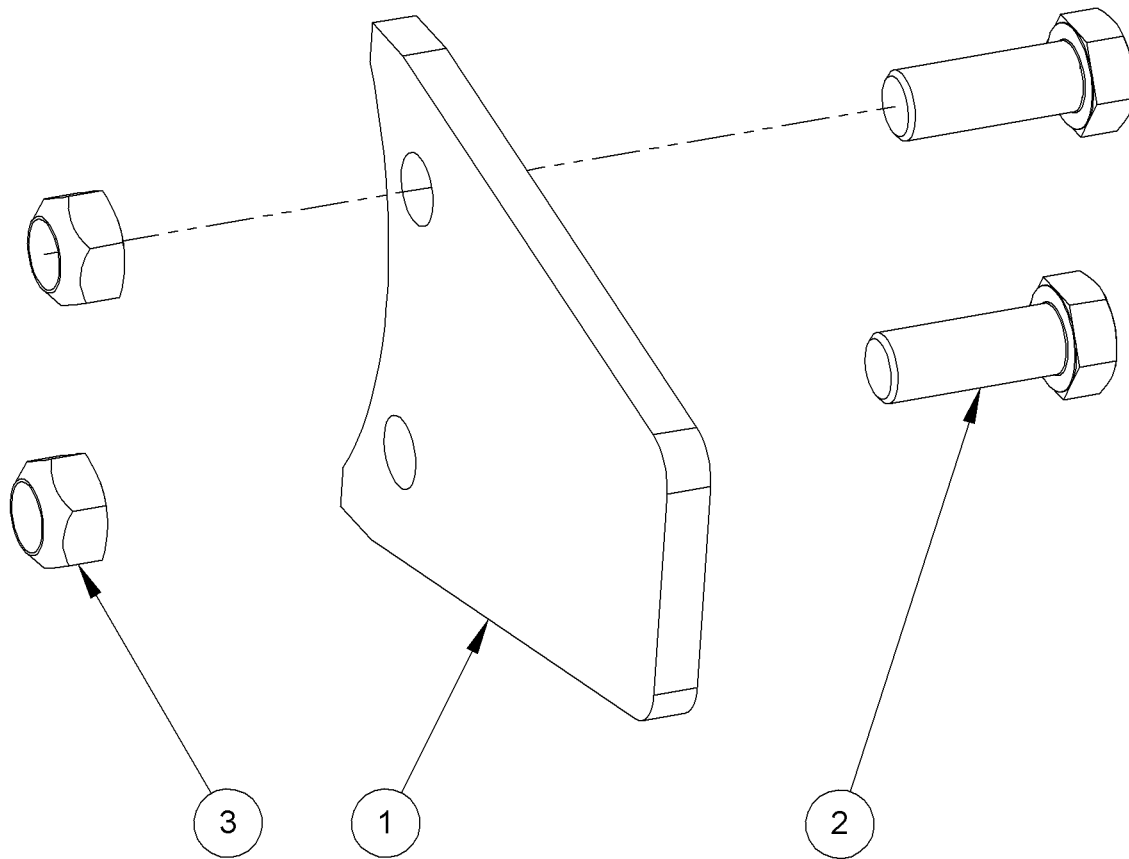


<i>Item</i>	<i>Part No.</i>	<i>Description</i>	<i>Qty</i>
1	R-05045	Frame WD-6	1
2	R-05046	Cover	1
3	R-05047	Cover	1
4	R-05004	Cover	1
5	45AE006160012	Flange bolt $\frac{3}{8}$ "-16NC x $\frac{3}{4}$ "	14
6	46AB006	Tempered flat washer $\frac{3}{8}$ "	3
7	46AC006	Lock washer $\frac{3}{8}$ "	3
8	35012	Grease cup $\frac{1}{8}$ " NPT	4
9	35015	Knob $\frac{3}{8}$ " x 1 $\frac{1}{4}$ " lg	3





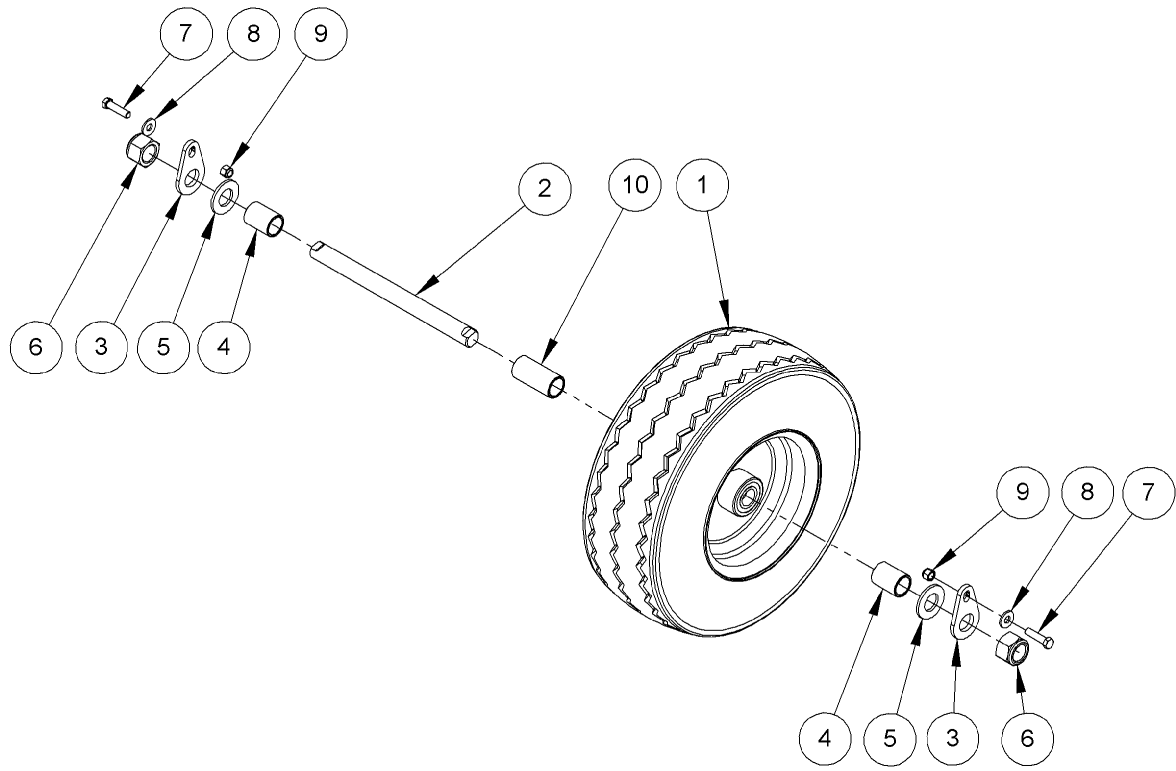
Item	Part No.	Description	Qty
1	R0106-14E01	Rock rake teeth assembly	1
2	R-06001	Chain tentioner	1
3	R-06002	Base plate for gearbox	1
4	R-06003	Drive shaft	1
5	R-06018	PTO T-60 1 3/8"-6 Quick disconnect / Clutch x 14"	1
6	R-07006	Chain #80 x 54" lg	1
7	R-14014	Spiral drum assembly WD-6	1
8	R-14017	Bearing and seal dust support	1
9	R-14018	Spacer	1
10	UN-06001-29	Key 1/2" x 1/2" x 1 1/2"	1
11	UN-06001-9	Key 3/8" x 3/8" x 4"	1
12	UN-28006-7	Shim 1 3/4" (0.034")	1
13	UN-28007-3	Washer 1/2" ID x 2" OD x 3/8"	1
14	UN-28007-11	Washer 1/2" ID x 2 3/8" OD x 3/8"	2
15	06029	Gearbox COMER T304A 3:1	1
16	06047	PTO- T-60_1 3/8"-6 Quick disconnect x 28"	1
17	07040	Sprocket (Idler) 80-11	1
18	07041	Sprocket 80BS15 (Bore 1 3/4")	1
19	07042	Sprocket 80C10H (Bore 1 1/2")	1
20	34006-2	Flange bearing 1 1/2"	2
21	34006-7	Flange bearing 1 3/4"	2
22	34040	Dust seal (1 3/4" x 2 3/4" x 3/8")	1
23	45AA012100900	Hex. bolt 3/4"-10NC x 9" gr5	1
24	45AA008130112	Hex. bolt 1/2"-13NC x 1 3/4" gr5	3
25	45AA008130108	Hex. bolt 1/2"-13NC x 1 1/2" gr5	12
26	45AA008130200	Hex. bolt 1/2"-13NC x 2" gr5	8
27	45AA006160108	Hex. bolt 3/8"-16NC x 1 1/2" gr5	4
28	45DB012100408	Square bolt 3/4"-10NC x 4 1/2"	1
29	46AB008	Tempered flat washer 1/2"	11
30	46AC008	Lock washer 1/2"	3
31	46AB006	Tempered flat washer 3/8"	4
32	47AA01210	Standard nut 3/4"-10NC	1
33	47AA10008	Standard nut 1"-8NC	1
34	47AB01210	Nylon lock nut 3/4"-10NC	1
35	47AB10008	Nylon lock nut 1"-8NC	1
36	47AB00813	Nylon lock nut 1/2"-13NC	4
37	47AC00813	Stover nut 1/2"-13NC	16





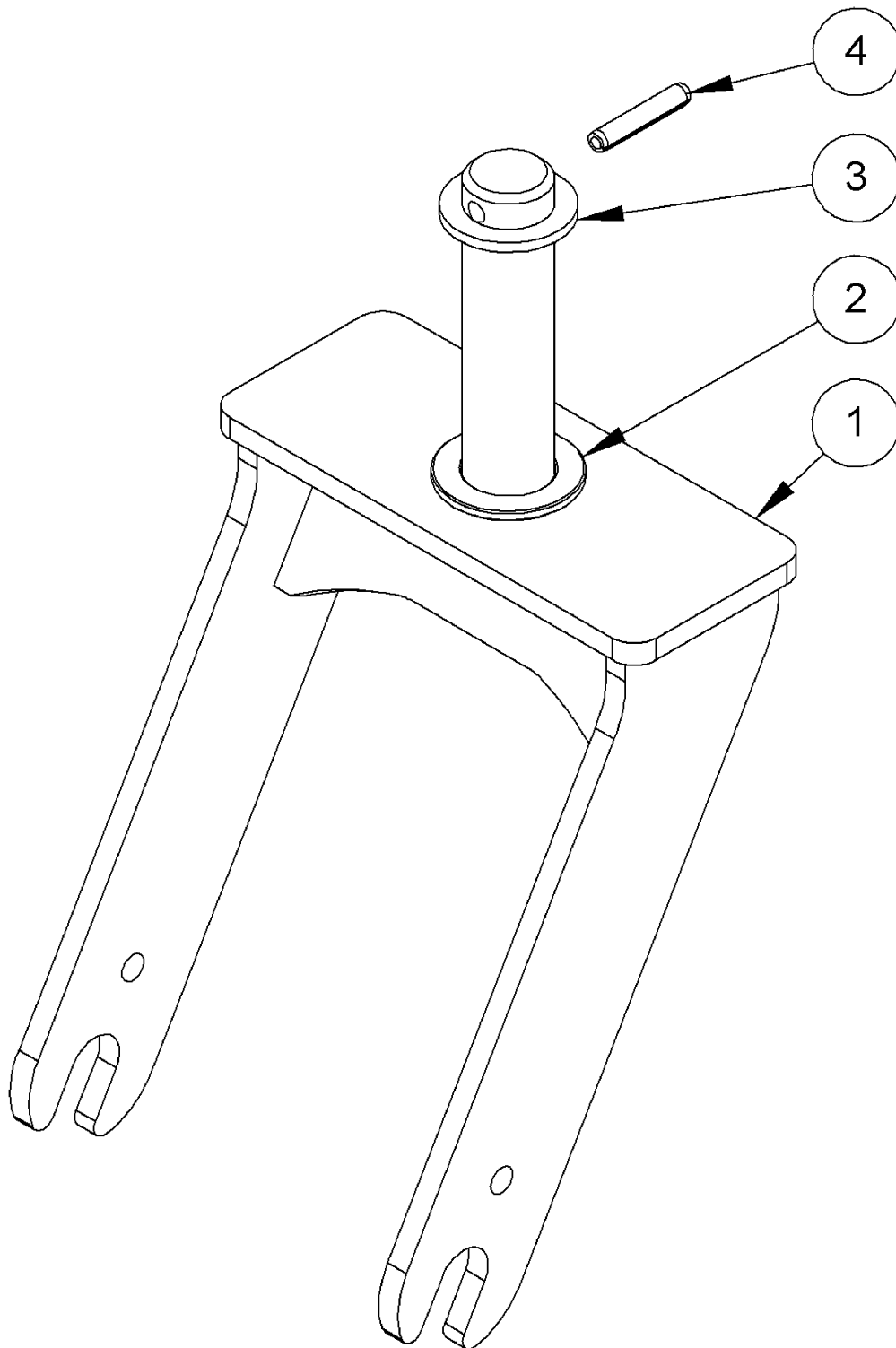
<i>Item</i>	<i>Part No.</i>	<i>Description</i>	<i>Qty</i>
1	UN-14004	Rock rake tooth	37
2	45AA010180200	Hex. bolt 5/8"-18NF x 2" gr5	74
3	47AC01018	Stover nut 5/8"-18NF	74

Wheel assembly





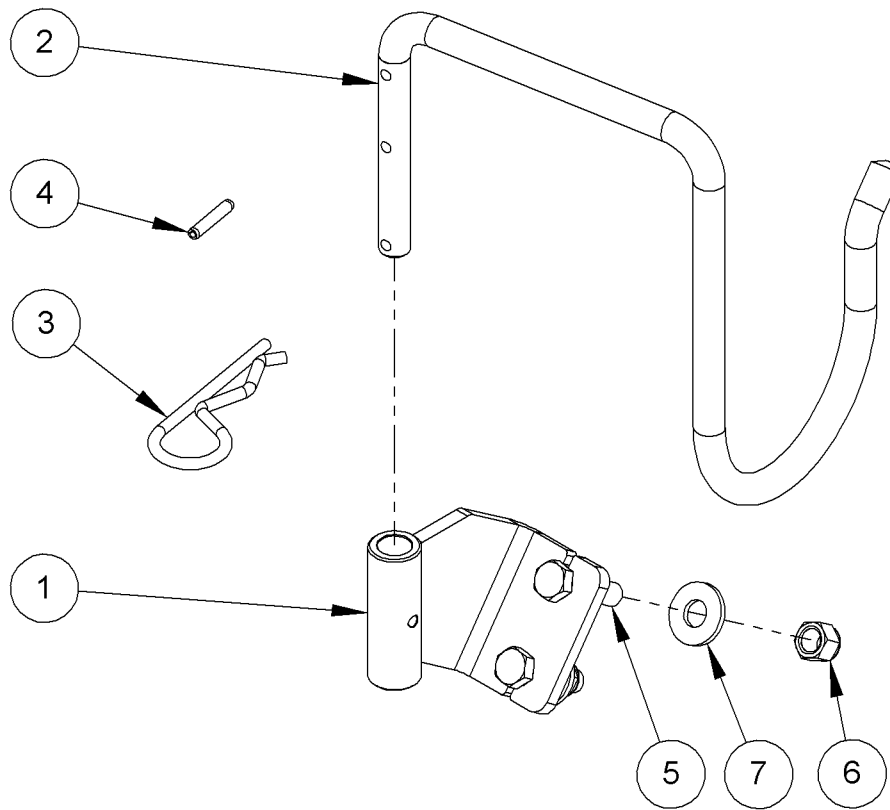
<i>Item</i>	<i>Part No.</i>	<i>Description</i>	<i>Qty</i>
1	03008	Traction Sawtooth Tire 16.5 x 6.5 x 8	1
2	R-25005	Axle 1"	1
3	UN-25007	Locking device wheel	2
4	UN-28005-7	Bushing 1"ID x 1.375"OD x 1.804"	2
5	46AB100	Tempered flat washer 1"	2
6	47AB10008	Nylon lock nut 1"-8NC	2
7	45AA006160108	Hex. bolt $\frac{3}{8}$ "-16NC x 1 $\frac{1}{2}$ " gr5	2
8	46AA006	Flat washer $\frac{3}{8}$ "	2
9	47AB00616	Nylon lock nut $\frac{3}{8}$ "-16NC	2
10	UN-28005-5	Bushing 1"int. x 1 $\frac{5}{16}$ "ext. x 2 $\frac{13}{16}$ " lg	1





Wheel support assembly

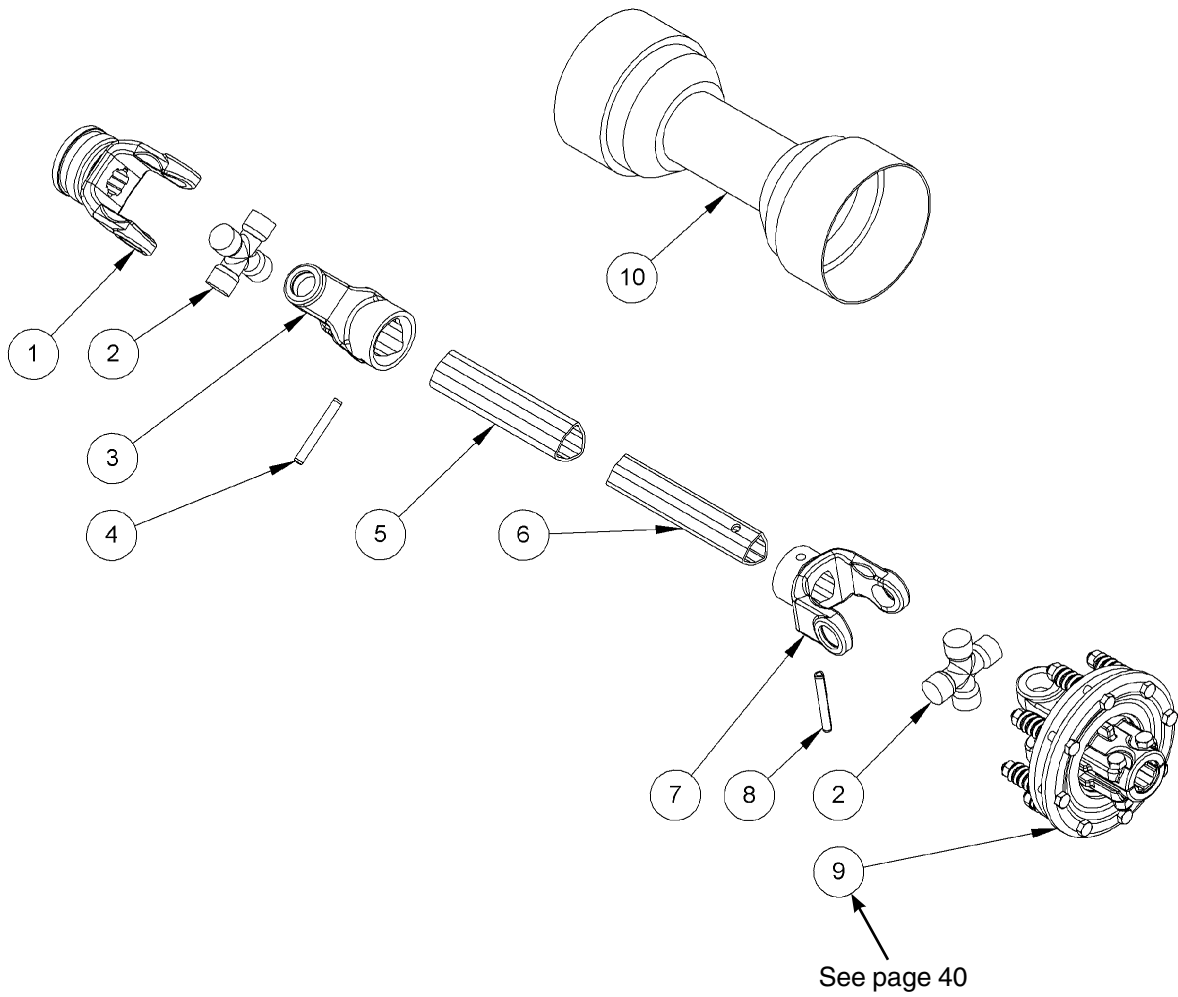
<i>Item</i>	<i>Part No.</i>	<i>Description</i>	<i>Qty</i>
1	R-03005	Wheel support bracket	1
2	UN-28011	Spacer 1 1/2"ID x 2 1/2"OD x 3/16"	1
3	28001	Spacer 1 1/2"ID x 2 1/4"OD x 3/16"	1
4	49AA060200	Spring pin 3/8" x 2"	1





PTO Bracket assembly

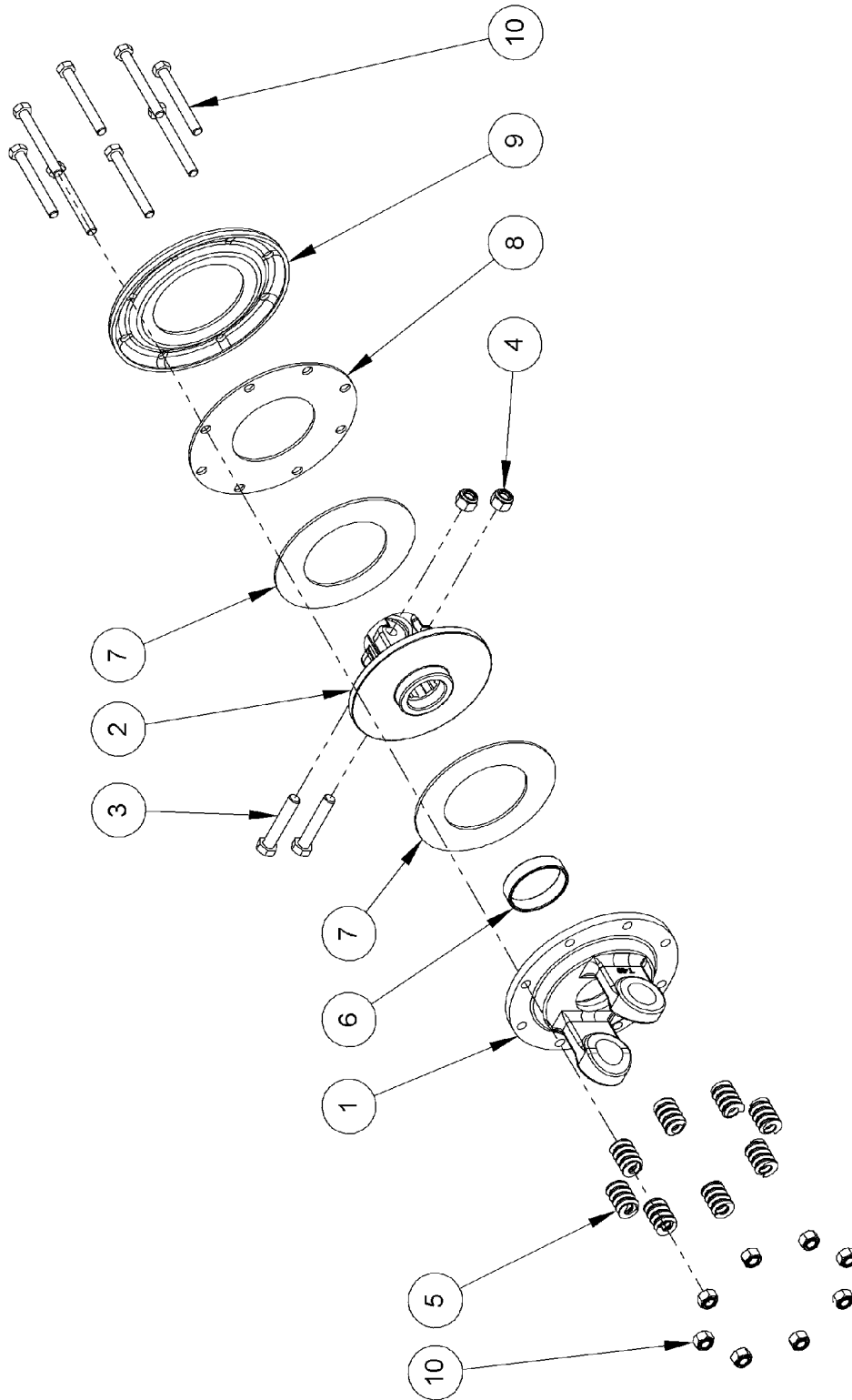
<i>Item</i>	<i>Part No.</i>	<i>Description</i>	<i>Qty</i>
1	R-43003	PTO Support (Bolted plate)	1
2	R-43004	PTO Support (Hook)	1
3	35014	Hitch pin $\frac{3}{16}$ " x 3 $\frac{1}{4}$ " lg	1
4	49AA030100	Spring pin $\frac{3}{16}$ " x 1"	1
5	45AA006160108	Hex bolt $\frac{3}{8}$ "-16NC x 1 $\frac{1}{2}$ " gr5	2
6	47AB00616	Nylon lock nut $\frac{3}{8}$ "-16NC	2
7	46AA006	Flat washer $\frac{3}{8}$ "	2





PTO - T60 with Torque limiter / R-06018

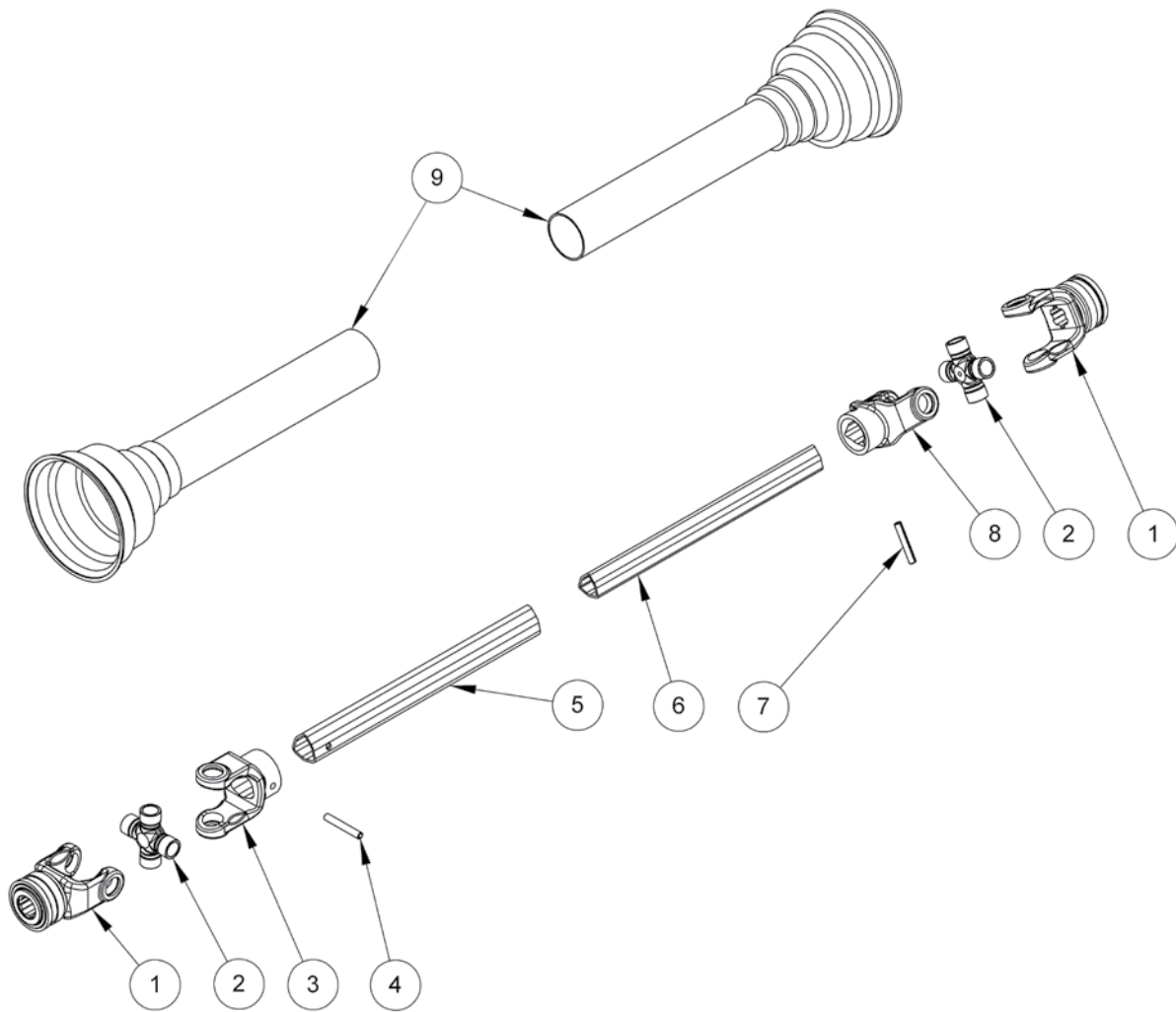
<i>Item</i>	<i>Part No.</i>	<i>Description</i>	<i>Qty</i>
1	06013-4	Yoke Series 60 1 3/8" Quick disconnect - 6 Splines	1
2	06012-4	Cross Series 60	2
3	06015-4	Yoke - Outside tube Series T-60	1
4	49MA10080	Spring pin 10mm x 80mm lg	1
5	R-06019	Outside tube Series T-60	1
6	R-06020	Inner tube Series T-60	1
7	06014-4	Yoke - Inside tube Series T-60	1
8	49MA10075	Spring pin 10mm x 75mm lg	1
9	06095	Torque limiter ass'y	1
10	R-06021	PVC Shield kit (Inner & Outer tubes)	1





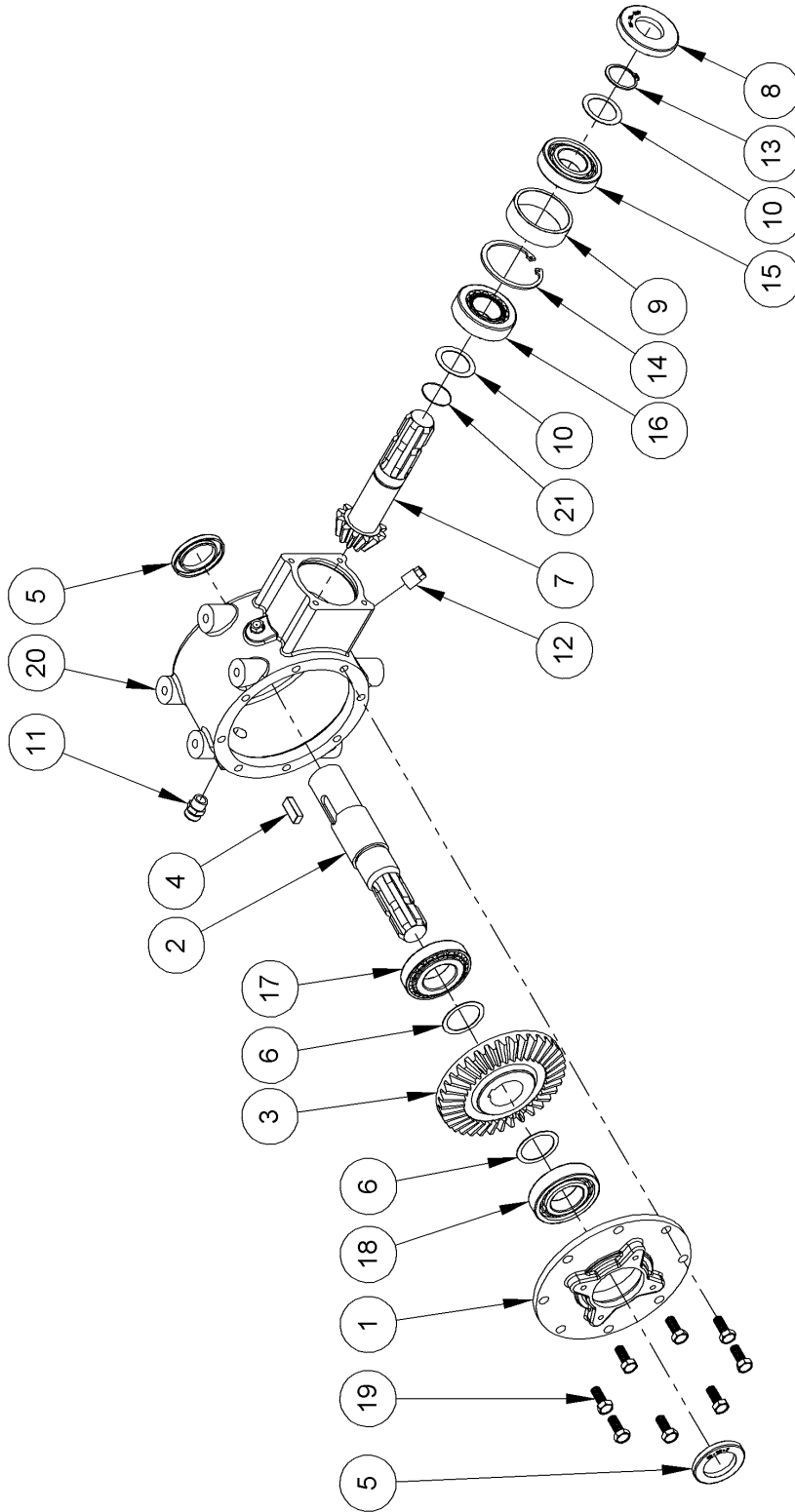
Torque Limiter Series 60-F2 / 06095

<i>Item</i>	<i>Part No.</i>	<i>Description</i>	<i>Qty</i>
1	06031-1	Flanged Yoke (Series 60)	1
2	06031-2	Clutch Support F42 1 $\frac{3}{8}$ " - 6	1
3	45MA12125065	Hex. bolt M12 x 1.25 x 65mm	2
4	47MA12125	Nylon lock nut M12 x 1.25	2
5	06030-1	Spring \varnothing 6mm	8
6	06030-3	Bushing	1
7	06030-4	Friction Disk	2
8	06030-6	Inner Plate	1
9	06030-8	Pressure plate	1
10	06095-10	Kit Bolt M10x1.5x100mm + Nylon Lock nut M10x1.5	1





<i>Item</i>	<i>Part No.</i>	<i>Description</i>	<i>Qty</i>
1	06013-4	Yoke 1 $\frac{3}{8}$ " Quick Disconnect 6 spline	2
2	06012-4	Kit - Cross & Bearing	2
3	06015-4	Yoke - Outside Tube	1
4	49MA10080	Spring Pin 10mm x 80mm	1
5	06039-2	Outside Tube	1
6	06040-2	Inside Tube	1
7	49MA10075	Spring Pin 10mm x 75mm	1
8	06014-4	Yoke - Inside Tube	1
9	06044-2	PVC Shield Kit (Inner & Outer tubes)	1





Gearbox Comer T-304A / 06029

<i>Item</i>	<i>Part No.</i>	<i>Description</i>	<i>Qty</i>
1	06029-1	Cover	1
2	06029-2	Shaft	1
3	06029-3	Crown Z36 - M4 - 35	1
4	06029-4	Key 12 x 8 x 30	1
5	06029-5	Oil Seal 40-62-7	2
6	06029-6	Shim 51,5mm	2
7	06029-7	Pignon Shaft Z12 - M4 - 35	1
8	06029-8	Oil Seal 35-72-10/7	1
9	06029-9	Spacer	1
10	06029-10	Shim 48mm	2
11	06029-11	Oil filler plug 3/8"	1
12	06029-12	Plug 3/8"	2
13	06029-13	Snap Ring DIN 471 - 35 X 1.5	1
14	06029-14	Snap Ring DIN 472 - 72 X 2.5	1
15	06029-15	Bearing SKF - 6207	1
16	06029-16	Bearing KF - 32207	1
17	06029-17	Bearing SKF - 30208	1
18	06029-18	Bearing SKF - 6208	1
19	06029-19	Bolt M10 x 1.5 x 25mm	8
20	06029-20	Casing	1
21	06029-21	Shim 35mm	1



Warranty Policy on new S Houle equipment

S Houle Inc. offers a warranty on all new equipment for a period of **1 year after date of retail purchase**, according to the terms listed below:

1. **AN APPROVAL FROM S HOULE INC. IS REQUIRED BEFORE ANY REPAIRS OR WARRANTY CLAIMS, WITH ACCOMPANYING PHOTOS AND THE EQUIPMENT'S SERIAL NUMBER;**
2. All claims must be received **30 days after date of approval;**
3. The equipment is F.O.B. St-Germain-de-Grantham at all times;
4. All defective parts must be returned to S Houle Inc. or retrieved by a representative of the manufacture **within a period of 30 days following the warranty claim;**
5. The S Houle warranty covers all defects in material or fabrication of the products only, and therefore does not covers the normal wear or non-recommended utilization of the product. All breaks resulting from an accident or abusive use will not be covered by the warranty policy;
6. The warranty does not cover any traveling fees to gain access to the equipment for evaluation or repairs;
7. Only original parts or S Houle approved parts will be considered appropriate for warranty claims;
8. S Houle Inc. reserves the right to refuse any labor time deemed excessive for any repair work claimed on warranty.
9. The labor fees compensated on warranty claims may never exceed **100\$/hour;**
10. On request, S Houle Inc. can provide the service of a road mechanic to effect repairs, for a fee of 100\$/hour + travel fees of 0.60\$/km;
11. The standard color of all equipment out of the factory will be S Houle yellow unless specifically requested by the client;
12. The warranty policy does not apply to the **NORMAL WEAR PARTS** listed below:

Examples: Flow divider, cutting edges, bolts, nuts, spring blades, skid shoes, skid shoe bolts, sliders, chaines and chain hitches, cast iron shoes, hydraulic hoses, clutch and clutch components, gearboxes, driveshafts and others.

PURCHASER'S RESPONSIBILITIES

The present warranty presumes a correct maintenance and periodic inspections of the equipment by the owner, as described in the Owner's Manual provided with the equipment at time of purchase. The cost of regular maintenance or required servicing is the responsibility of the client. The buyer must conserve all receipts proving that the required maintenance has been respected.

EXCLUSIONS ON SUBSEQUENT MANUFACTURER UPGRADES

S Houle Inc. reserves the right to modify, change or improve any product with no obligation to replace or modify any previously purchased equipment.



S Houle inc.

300 Industrial blvd.
St-Germain-de-Grantham, Quebec, Canada, J0C 1K0
Phone : 819 395-4380 Fax. : 819 395-5516
Toll free : 1 888-404-4380
E-Mail : info@shoule.com Web: www.shoule.com

Product Registration

Dealer instructions:
Make sure registration is complete and signed.

Product Information :

MACHINE MODEL : _____ DELIVERY DATE : _____ / _____ / _____
mm dd yyyy

SERIAL NUMBER : _____

OPTIONAL EQUIPMENT : _____

Customer Information :

FIRST & LAST NAME : _____ PHONE : _____

MAILING ADDRESS : _____ EMAIL : _____
Civic number and street

_____ City

_____ State / Province _____ Zip Code

Dealer Information :

DEALER NAME : _____ PHONE : _____

MAILING ADDRESS : _____ EMAIL : _____
Civic number and street

_____ City

_____ State / Province _____ Zip Code

Signatures :

Owner or designated representative signature

Authorized dealer signature

Note : Both dealer and owner must sign in order to validate the warranty.

I hereby acknowledge that:

- | | |
|---|---|
| <ol style="list-style-type: none"> I have received and accepted delivery of equipment described. The equipment was checked thoroughly for loose or missing parts and has been adjusted in accordance with the pre-delivery checklist. I have been provided with and have carefully read the instruction manual. I have read and understand the nature and extent of the warranty and understand clearly that there were and are no other representations or warranties, either express or implied, made by anyone. A copy of the present document must be completed and transmitted to Fa- | <ol style="list-style-type: none"> brication S.Houle as soon as possible, in order to process your warranty. I have been advised on proper operation, maintenance and lubrication procedures of this equipment. I have been instructed on and do understand the application, limitations and capacities this equipment was designed and recommended for, all as described in the Instruction Manual and other literature published by Fabrication S.Houle inc. |
|---|---|

ONE YEAR WARRANTY COVER PARTS ONLY, EFFECTIVE WHEN THIS FORM HAS ALL APPLICABLE INFORMATION COMPLETED, IS SIGNED BY BOTH THE OWNER AND THE DEALER AT THE TIME OF DELIVERY, THEN FORWARDED TO **S HOULE INC.** WARRANTY SERVICE MAY BE DENIED IF THIS FORM CONTAINS FALSE INFORMATION IS OR INCOMPLETE.



S Houle inc.

300 boul. Industriel
St-Germain-de-Grantham, Québec, Canada, J0C 1K0
Tél : 819 395-4380 Téléc. : 819 395-5516
Sans frais : 1 888-404-4380
Courriel : info@shoule.com Site : www.shoule.com

S Houle inc.

300 Industrial blvd
St-Germain-de-Grantham, Québec, Canada, J0C 1K0
Phone : 819 395-4380 Fax. : 819 395-5516
Toll free : 1 888-404-4380
E-mail : info@shoule.com Web : www.shoule.com