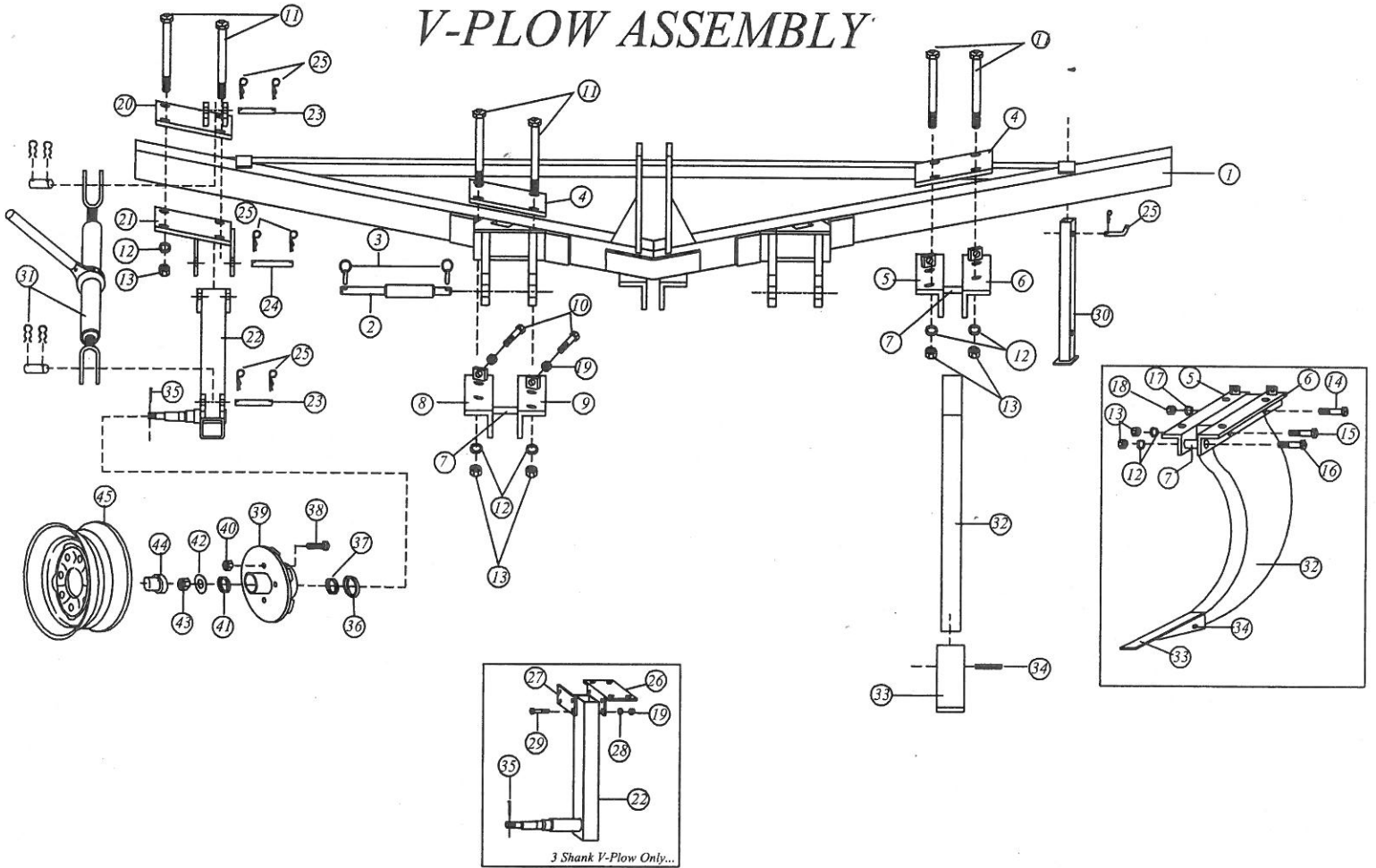


V-PLOW ASSEMBLY



V-PLOW ASSEMBLY PARTS LIST

COVERS MODELS WITH MAIN FRAME WIDTHS OF 88", 120", 142", 182", 222"

REF. #	PART #	DESCRIPTION	REF. #	PART #	DESCRIPTION
1	11348	MAIN FRAME, 88"	27	12683	GAUGE WHEEL CLAMP PLATE 3 SHANK ONLY
	11349	MAIN FRAME, 120"	28	T-24	LOCKWASHER, 5/8"
	11350	MAIN FRAME, 142"	29	T-745	HEX BOLT, 5/8" X 5" GR.2
	11351	MAIN FRAME, 182"	30	VP54	PARKING STAND, 36"
	11352	MAIN FRAME, 222"	31	15005	TURNBUCKLE ASSEMBLY
2	VP251	HITCH PIN, CAT II & III 12 1/8"	32	VP28	SHANK, 28" X 1 1/4"
3	VP252	LYNCH PIN		VP32	SHANK, 32" X 1 1/4"
4	10531	TOP MOUNT PLATE	33	MT13454	POINT, 1 1/4"
5	VP112	RH. SHANK MOUNT ANGLE <small>FOR LH. SIDE OF PLOW</small>		VP35M	V-PLOW POINT MODIFIED
6	VP102	LH. SHANK MOUNT ANGLE <small>FOR LH. SIDE OF PLOW</small>	34	VP25	ROLL PIN, 7/16" X 2"
7	10535	SPACER, 3/4" X 1 1/4"	35	T-342	COTTER PIN, 5/32" X 1 1/4"
8	VP101	RH. SHANK MOUNT ANGLE <small>FOR RH. SIDE OF PLOW</small>	36	T-576	SEAL, 1 1/2"
9	VP111	LH. SHANK MOUNT ANGLE <small>FOR RH. SIDE OF PLOW</small>	37	T-575	INNER BEARING, 1 1/4"(LM67048)
10	12178	HEX BOLT, 5/8" X 2 1/2" GR.2 <small>ALL THREAD</small>	38	T-562	LUG BOLT, 1/2" X 1 1/2"
11	11032	HEX BOLT, 3/4" X 8" GR.5	39	T-572	HUB ASSEMBLY
12	T-31	LOCKWASHER, 3/4"	40	T-23	LUG NUT, 1/2"
13	T-27	HEX NUT, 3/4"	41	T-574	OUTER BEARING, 3/4"
14	T-771	PIVOT BOLT, 7/8" X 4" GR.5	42	T-603	SPINDLE WASHER, 3/4"ID. X 1 1/2"
15	12870	SHEAR BOLT, 3/4" X 4" GR. 2	43	T-567	CASTLE NUT, UNF 3/4"
16	9859	HEX BOLT, 3/4" X 4" GR.5	44	T-577	HUB CAP
17	T-21	LOCKWASHER, 7/8"	45	T-612	WHEEL RIM 5-BOLT
18	T-19	HEX NUT, 7/8"			
19	T-22	HEX NUT, 5/8"			
20	11946	RH GAUGE W/MOUNT BRACKET TOP			
NS	11947	LH. GAUGE W/MOUNT BRACKET TOP			
21	11948	RH. " " " BOTTOM			
NS	11949	LH. " " "BOTTOM			
22	11752	SPINDLE ARM (3 SHANK REGULAR)			
	11754	SPINDLE ARM RH, (REGULAR)			
NS	11759	SPINDLE ARM LH, (REGULAR)			
23	T-2661	PIN, 1" X 4"			
24	11944	PIN, 1" X 6 1/2"			
25	T-341	COTTER PIN, 3/16" X 1 1/2"			
26	12681	RH. GAUGE W/MOUNT PLATE WELD'T (3- SHANK VP)			
	12682	LH. GAUGE W/MOUNT PLATE WELD'T (3- SHANK VP)			

All units with a serial number greater than #21270 will use part number MT13454
Part number VP35M will fit all shanks prior to this date.