

TUBE•LINE™

2024 NITRO PRICE LIST





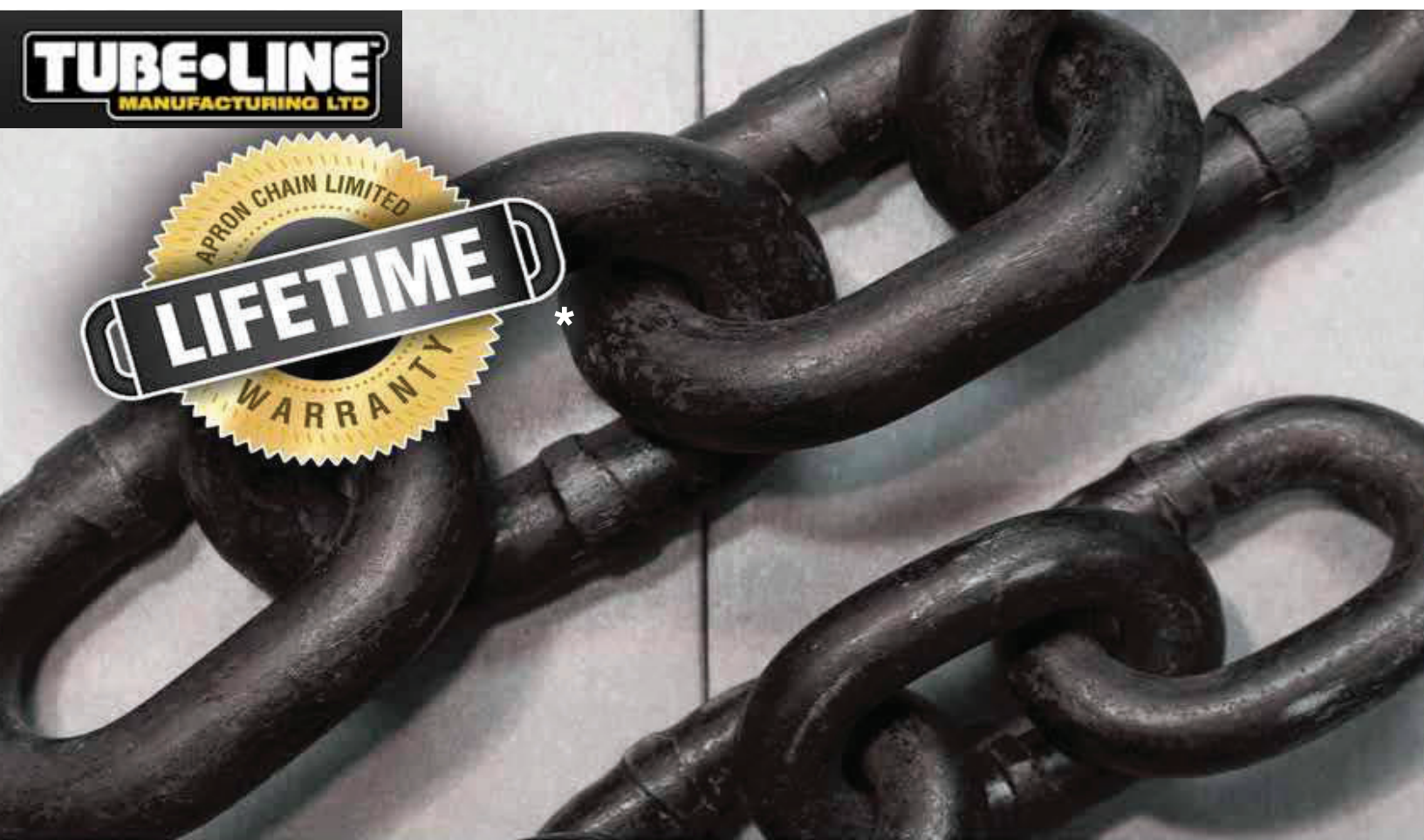
Consistent Metering, Consistent Spread.

Developed with features to ensure commercial readiness, NITRO commercial series spreaders offer slip slide poly board floors and walls, a guillotine endgate, reversible apron chain, and quick drop beaters. The guillotine endgate can be held in any position controlling how much material is able to be moved to the beaters by the variable speed apron chain. This method of delivery provides consistent metering whether working with pen pack or semi-solids. With the recent addition of the tri-axle models, you get all these feature plus reduced compaction, easier turning and more.

Responding to market demand, the NITRO Rancher Series was developed to ensure smaller operations get the same metering in a format tailored to them. NITRO RS spreaders are ideal for farmers trying to keep their yards clean while delivering rich nutrients to the field. Removeable beater assemblies provide increased value and functionality, allowing the NITRO to operate as a rear discharge trailer with a live floor when not spreading.

Tubeline NITRO spreaders are scale ready and feature a wide variety of features, options, and models to unleash the potential of your operation.





Hydraulic-Driven Apron Chain

The variable speed apron chain ensures that your load is delivered to the beaters at the right speed regardless of the manure consistency. This provides accurate control when metering, application speed, and thickness.

The NITRO is equipped with a fully reversible apron drive. This allows the load to be backed away from the beater assembly should foreign objects such as rocks get inbetween the beaters and jam them.



Apron Chain

The brute strength of the NITRO's apron chain system sets it apart. Truly heavy-duty, the chain and sprocket are designed to move heavy manure day after day without chain breaks.



Galvanized Slats

Apron slats are attached to the chain using a heavy tab and slot design. This free floating design minimizes stress on the joints.

Grade 80 - 3/4	Grade 80 - 5/8
Breaking Strength 113,200 LB	Breaking Strength 72,400 LB
950	750
	600
	525 ^{RS}
	450
	375 ^{RS}



Functional Versatility

All NITRO spreaders are designed to provide incredible versatility throughout the year. The NITRO is not only a capable spreader, but can be easily converted to a self unloading trailer when the beater assembly is removed.

Tubeline's Quick-Drop Beater System provides producers and custom operators an adaptive tool ideal for the transportation and processing of bulk materials.

Designed with an integrated guillotine endgate, the NITRO retains it's box even with the beaters removed leaving behind a fully functional self unloading trailer with a hydraulic endgate and live floor.

The NITRO can be used to stockpile in the field throughout the year. This keeps your barnyard clean and places valuable nutrients close at hand when its time to spread.

When harvest time comes, the NITRO can be used to haul forage from the field to the pit. Open the endgate in front of the pit and run the apron to unload quickly.

Beater Removal

Remove a beater assembly in 4 steps.

1. Remove the rear most PTO drive shaft from the spreader.
2. Connect chains from a front end loader to the lift points on the beater assembly.
3. Remove the retaining bolts connecting the beaters to the box.
4. Using the loader lift the assembly from the rear of the spreader.

Note: Always remember to store your beater assemblies safely to prevent harm and/or damage.



BEATERS YOU CAN'T BEAT



Replaceable Reversible Knives

Every NITRO model is equipped with durable AR400 knives. Each knife can be easily flipped for longer life or replaced when required.



Beater Wedge

375RS, 450, 525RS, and 600 Models

A standard feature on 375RS, 450, 525RS and 600 models (not required on other models), the beater wedge helps to ensure manure is delivered to the beaters preventing large clumps from falling off the back of the unit.



Robust and Dynamically Balanced

The NITRO beaters are dynamically balanced ensuring minimal flex and vibration when running the beaters at full speed.



Paddle Kit

Optional

The optional bolt on paddle kit cups material to provide better throw.

Driveline Protection *Standard on all models*

To protect expensive drive line components, NITRO spreaders are equipped with both an over running clutch and a torque limiter. The over running clutch allows the beaters to freewheel after the tractors PTO drive is shut down. This prevents hard stops reducing the wear on both the NITRO and your tractor.

To prevent damage to beater assemblies, a torque limiter connects the rear PTO shaft and the beater assembly. The torque limiter disengages the driveline from the beaters should the pressure build.





PUT LITTER IN ITS PLACE

Poultry Litter Beater Assembly Option

For better management and spreading performance of poultry litter, NITRO spreaders can be equipped with an optional poultry litter beater assembly. The interchangeable quick-drop beater system allows operators to conveniently switch between the vertical or poultry beater assemblies offering flexibility to both producers and custom operators.



Designed to maximize distribution while metering the flow of material, the poultry beater assembly utilizes a complete gear box drive system that drives both the horizontal beaters and spinners together to ensure consistent unloading.



Dual Horizontal Beaters

The NITRO Poultry Litter Beater assembly comes equipped with two horizontal beaters to ensure a consistent amount of material is fed to the spinners.



Dual Spinners

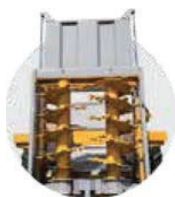
High speed spinners hold material accelerating it to maximize the spread.



Drop-On Adjustment

The lower portion of the apron is adjustable allowing material to drop across more of the spinner for better distribution of material.

A BIG BOX FULL OF SURPRISES



Guillotine Endgate

The guillotine endgate can be opened partially to meter the amount of material being delivered to the beater assembly. This ensures the optimal delivery of lime and various manure consistencies to the field.



LED Lights

Optional

LED lights and flashers ensure transit safety. Innovative light covers hydraulically open and close in sequence with the end gate, ensuring lights are protected while spreading.



Slip Slide Poly Boards

Poly Board Walls available only on 450, 600, 750 & 950 Models

To resist corrosion, the Nitro box integrates slip slide poly boards on the floors of RS models, and the Floors and walls of commercial models. All poly boards are secured with stainless steel hardware.



Central Grease Banks

Standard on 450, 600, 750, and 950 Models

Centrally located grease banks ensure easy lubrication of components located in hard to reach areas.



Industrial Jack

The strong, industrial jack, is easy to use and makes unhitching safer.



CV Shaft

Select Nitro models come equipped with a CV (Constant Velocity) Shaft allowing for a tighter turning radius.



Rubber Cushion Tongue

*Optional on 450, 600, and 750 Models
Standard on 950 Model*

The rubber cushion suspension tongue provides operator comfort and reduces mechanical stress and fatigue of both the spreader and the tractor.



Optional Colours

Optional

In addition to the standard yellow, the NITRO lineup is available in red, green, blue and orange.



Silage Extensions

Optional on 750 and 950 Models

The NITRO 750 and 950 can easily double as a silage hauler, with the addition of optional height-enders.

Silage extensions are not recommended for manure.



Rubber Seal Kit

Optional

The Rubber Seal Kit adds a compression seal to the front panel and the endgate to help contain semi solid materials.



Oscillating Ball Hitch

Optional

Optional on all models is the oscillating ball hitch available in various pin sizes.



SINGLE AXLE

6 feet tall



Sizes compatible w/ NITRO models:

275RS, 375RS, 575RS, 725RS, 450, 600, 750

425/22.5
Recap Truck

550/45
R22.5

480/70
R30

600/65
R34

710/70
R38

710/70
R42



Consistent Loading Height

Single & tandem axles

Each axle is specifically engineered to match the selected tire size. This attention to detail ensures that each spreader that leaves our plant can be easily loaded.



Brakes

Optional for single & tandem

The optional brake system comes with a total of 4 calipers. Single axle spreaders are configured with two calipers per rotor. Tandem axle spreaders are configured with one caliper per rotor.

Single axle shown. Braking configurations may vary with model. All models are brake ready.



TANDEM AXLE

6 feet tall

Sizes compatible w/ NITRO models:

275RS, 375RS, 575RS,
725RS, 450, 600, 750, 950



425 x 22.5
Recap Truck

550/45
R22.5

700/50
R26.5

750/60
R30.5

**Also used
for Tri-axle
spreaders*



Adjustable Axle Position

Commercial Series

Our Commercial Series spreaders have 3 axle positions which help to optimize the spreaders balance while traveling through the field.



High Load Bearings

Standard on Tandem Axles

The walking beam tandem axle pivot bearings on the Commercial Series spreaders use high load composite bearings with embedded lubricant. This eliminates the need to grease them during maintenance.



TRI-AXLE THE MORE THE MERRIER



**Less
Compaction**



**Extended
Life**



**Easy
Turning**



**Heavier
Duty**

NITRO Tri-Axle spreaders feature the standard NITRO Quick-Drop Beater assembly, allowing you to switch quickly and easily between the vertical beaters and the spinner deck. While the vertical beater assembly is ideal for thicker material, the spinner deck is ideal for looser material such as poultry litter. This set-up offers increased flexibility for both producers and custom operators allowing you to equip your spreader properly for whichever material you'll be spreading.

It has 16,000lbs (10 bolt) wheel hub capacity. Due to the increased amount of contact points, the Tri-Axle results in reduced soil compaction. This allows for more air and water to get to the roots, increasing the yield of your crops when compared to single and tandem axles.

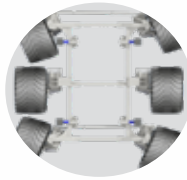
They also come standard with a following axle. The front and rear axles can turn independently, reducing wear on the tires when turning giving your tires longer life.

Brakes are available on Tri-Axle models on both the centre and rear axles. Each axle also comes standard with the Horst Road Flex Suspension system, reducing wear on the NITRO box when driving down the road or in the field.



Load Transfer Draw Bar

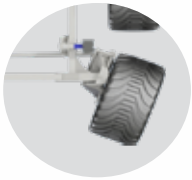
Hydraulically transfer the load by dispersing the weight to the tongue when unit is full to increase traction and help you stop quicker.



Follow Axles

Follow axles allow for a sharper turning radius.

For predictable towing or reversing, following axles can be hydraulically locked in line.



15° Rotation

Front and rear axles allow a of swivel 15° in each directions giving the Tri-Axle design a great turning radius.

Wheel independent Road Flex suspension. This patented innovation not only smooths out bumps, it gives added clearance when turning adding even more protection for your load.





NITRO 275RS

NITRO 375RS

Specifications	NITRO 275RS	NITRO 375RS
Carrying Capacity	10 Ton	12 Ton
Heaped (cu. ft.)	294	444
Struck Level (cu. ft.)	201	266
Inside Dimensions	62.5"W x 34.5"D x 143"L <i>(Inside width between flare 77.75")</i>	62.5"W x 34.5"D x 175"L <i>(Inside width between flare 89")</i>
Overall Length	23.5'	25'
Overall Outside Width (Single Axle)	118"	126"
Overall Outside Width (Tandem Axle)	115.5"	115"
Loading Height (Single Axle)	69"	76"
Loading Height (Tandem Axle)	69"	75"

Specifications	NITRO 275RS	NITRO 375RS
Wheel Hub Capacity (Tandem Axle)	12,000 lbs. (8-bolt) x4	12,000 lbs. (8-bolt) x4
Tandem Tire Sizes	425/22.5 Recap Truck Tires 550/45-22.5 Flotation Tires	425/22.5 Recap Truck Tires 550/45-22.5 Flotation Tires
Wheel Hub Capacity (Single Axle)	16,000lbs (10-bolt) x2	16,000lbs (10 bolt) x2
Single Tire Sizes	425/22.5 Recap Truck Tires 550/45-22.5 Flotation Tires 480/70-30 Tractor Lug Tire	600/65-34
Beater Diameter	34"	34"
Beater Speed	420 RPM	420 RPM
PTO Speed	1000 RPM	1000 RPM
Apron Chain Link Dia.	5/8"	5/8"
Shipping Weight	8,800 lbs. / 3,992 kg	9,139 lbs. / 4,145 kg
Required Tractor PTO HP	80	90
Brakes Available	Yes	Yes



Under the **Apron Chain Limited Lifetime Warranty**, Tubeline will replace a broken apron chain or connecting link on any NITRO model manure spreader. Apron Chain Limited Lifetime Warranties are non-transferable.





NITRO 575RS

NITRO 725RS

Specifications	NITRO 575RS	NITRO 725RS
Carrying Capacity	16 Ton	19 Ton
Heaped (cu. ft.)	576	767
Struck Level (cu. ft.)	379	507
Inside Dimensions	62.5"W x 45.5"D x 218"L <i>(Inside width between flare 94")</i>	71"W x 50"D x 240"L <i>(Inside width between flare 96")</i>
Overall Length	27.5'	31'
Overall Outside Width (Single Axle)	131"	136"
Overall Outside Width (Tandem Axle)	116"	136"
Loading Height (Single Axle)	88.5"	93"
Loading Height (Tandem Axle)	80"	93"

Specifications	NITRO 575RS	NITRO 725RS
Wheel Hub Capacity (Tandem Axle)	12,000 lbs. (8-bolt) x4	16,000 lbs. (10-bolt) x4
Tandem Tire Sizes	425/22.5 Recap Truck Tires 550/45-22.5 Flotation Tires 700/50-26.5 Flotation Tires	700/50-26.5 Flotation Tires
Wheel Hub Capacity (Single Axle)	12,000lbs (8-bolt) x4	20,000 (10 bolt) x2
Single Tire Sizes	710/70 R38 Tractor Lug Tire	710/70 R42 Tractor Tires
Beater Diameter	34"	36"
Beater Speed	420 RPM	420 RPM
PTO Speed	1000 RPM	1000 RPM
Apron Chain Link Dia.	5/8"	5/8"
Shipping Weight	11,000 lbs. / 4,990 kg	15,652 lbs. / 7,099 kg
Required Tractor PTO HP	125	165+
Brakes Available	Yes	Yes

Note: Specifications are subject to change without notice. Capacities determined by ASAE Std S324.2





NITRO 450

Features

Specifications

Options

The NITRO spreader from Tubeline originally started with the 450, 600, and 750 models followed by the 950 model shortly after the initial product launch. Developed with features to ensure commercial readiness these spreaders offer slip slide poly board floors and walls, a guillotine endgate, reversible apron chain, and quick drop beaters. Engineered for commercial use, our commercial line are all scale ready. The guillotine endgate can be held in any position controlling how much material is able to be moved to the beaters by the variable speed apron chain. This method of delivery provides consistent metering whether working with pen pack or semi-solids.



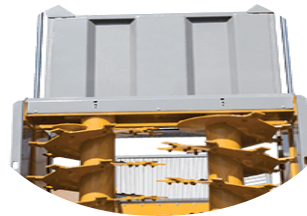
Apron Chain Limited Lifetime Warranty

Under the Apron Chain Limited Lifetime Warranty, Tubeline will replace a broken apron chain or connecting link on any Nitro model manure spreader. Restrictions may apply. For more information, please contact the Tubeline office.



CV Shaft

All Nitro models come equipped with a CV (Constant Velocity) Shaft allowing for a tighter turning radius, greatly reducing the incidence of driveline chatter in a tight turn, and increasing the longevity of the driveline.



Guillotine Endgate

The guillotine endgate can be opened partially to meter the amount of material being delivered to the beater assembly. This ensures the optimal delivery of lime and various manure consistencies to the field.

Other Models





NITRO 450

NITRO 600

Specifications	NITRO 450	NITRO 600
Carrying Capacity	13 Ton	17 Ton
Heaped (cu. ft.)	481	636
Struck Level (cu. ft.)	290	406
Inside Dimensions	62"W x 40"D x 201"L <i>(Inside width between flare 97.5")</i>	62"W x 50"D x 227"L <i>(Inside width between flare 97.5")</i>
Overall Length	27'	29.5'
Overall Outside Width (Single Axle)	115"	131"
Overall Outside Width (Tandem Axle)	116"	131"
Loading Height (Single Axle)	77"	90"
Loading Height (Tandem Axle)	79" (550/45-22.5) 77" (425/22.5 recap truck)	85" (550/45-22.5) 92" (700/50-26.5) 87" (425/22.5 recap truck)

Specifications	NITRO 450	NITRO 600
Wheel Hub Capacity (Tandem Axle)	12,000 lbs. (8 bolt) x4	16,000 lbs. (10 bolt) x4
Tandem Tire Sizes	550/45-22.5 or 425/22.5 recap truck	550/45-22.5, 700/50-26.5 425/22.5 recap truck
Wheel Hub Capacity (Single Axle)	16,000lbs (10 bolt) x2	20,000lbs (10 bolt) x2
Single Tire Sizes	600/65-34	710/70-38
Beater Diameter	34"	34"
Beater Speed	420 RPM	420 RPM
PTO Speed	1000 RPM	1000 RPM
Apron Chain Link Diameter	5/8"	5/8"
Shipping Weight	11,355 lbs. / 5,151 kg	13,930 lbs. / 6,319 kg
Required Tractor PTO HP	125+	150+
Brakes Available	Yes	Yes



Under the **Apron Chain Limited Lifetime Warranty**, Tubeline will replace a broken apron chain or connecting link on any NITRO model manure spreader. Apron Chain Limited Lifetime Warranties are non-transferable.





NITRO 750

NITRO 950

Specifications	NITRO 750	NITRO 950
Carrying Capacity	20 Ton	25 Ton
Heaped (cu. ft.)	838	1,028
(with Optional Silage Extension)	1,038	1,252
Struck Level (cu. ft.)	560	695
(with Optional Silage Extension)	770	918
Inside Dimensions	67"W x 58"D x 252"L <i>(Inside width between flare 102.5")</i>	67"W x 58"D x 297"L <i>(Inside width between flare 102.5")</i>
Overall Length	32.5'	35.25'
Overall Outside Width (Single Axle)	136"	N/A
Overall Outside Width (Tandem Axle)	136"	136"
Loading Height (Single Axle)	100"	N/A
(with Optional Silage Extension)	116"	N/A
Loading Height (Tandem Axle)	102"	109"
(with Optional Silage Extension)	118"	125"

Specifications	NITRO 750	NITRO 950
Wheel Hub Capacity (Tandem Axle)	16,000 lbs. (10 bolt) x4	20,000 lbs. (10 bolt) x4
Tandem Tire Sizes	700/50-26.5	750/60-30.5 Flotation Tires 750/60-30.5 Flotation Tires (Radial)
Wheel Hub Capacity (Single Axle)	20,000lbs (10 bolt) x2	N/A
Single Tire Sizes	710/70-42	N/A
Beater Diameter	36"	36"
Beater Speed	420 RPM	420 RPM
PTO Speed	1000 RPM	1000 RPM
Apron Chain Link Diameter	5/8"	3/4"
Shipping Weight	16,195 lbs. / 7,346 kg	19,890 lbs. / 9,022 kg
Required Tractor PTO HP	180+	200+
Brakes Available	Yes	Yes

Note: Specifications are subject to change without notice. Capacities determined by ASAE Std S324.2





NITRO 950TRI

NITRO 1050

Specifications	NITRO 950TRI	NITRO 1050
Carrying Capacity	25 Ton	30 Ton
Heaped (cu. ft.)	1,028	1,159
(with Optional Silage Extension)	1,252	1,509
Struck Level (cu. ft.)	695	769
(with Optional Silage Extension)	918	1,159
Inside Dimensions	67"W x 58"D x 297"L <i>(Inside width between flare 102.5")</i>	67"W x 58"D x 252"L <i>(Inside width between flare 102.5")</i>
Overall Length	35.25'	39.25'
Overall Outside Width (Tri-Axle)	155"	155"
Loading Height (Tri-Axle)	108"	108"
(with Optional Silage Extension)	124"	124"

Specifications	NITRO 950TRI	NITRO 1050
Wheel Hub Capacity (Tri-Axle)	16,000 lbs. (10 bolt) x6	16,000 lbs. (10 bolt) x6
Tri-Axle Tire Size	700/50-26.5 Flotation Tires 710/50-26.5 Radial Tires <i>(optional)</i>	700/50-26.5 Flotation Tires 710/50-26.5 Radial Tires <i>(optional)</i>
Beater Diameter	36"	36"
Beater Speed	420 RPM	420 RPM
PTO Speed	1000 RPM	1000 RPM
Apron Chain Link Diameter	3/4"	3/4"
Shipping Weight	22,340 lbs. / 10,133 kg	25,755 lbs. / 11,682 kg
Required Tractor PTO HP	200+	200+
Brakes Available	Yes	Yes



Under the **Apron Chain Limited Lifetime Warranty**, Tubeline will replace a broken apron chain or connecting link on any NITRO model manure spreader. Apron Chain Limited Lifetime Warranties are non-transferable.

Note: Specifications are subject to change without notice. Capacities determined by ASAE Std S324.2





WEIGHING IN ON OUR SPREADERS



Actual screen display from Athene System shown.

ISOBUS UT displays spreader controls and variable rate & overlap (if available on terminal)

Athene/SL2 controls spreader and scale system

Proportional to forward speed control - ensures application rate is correct irrespective of changes in the forward speed

- Variable rate capability - allows manual or automatic adjustment of application rates in different field areas to suit conditions

- ISOBUS TC GEO compliant - allows automatic adjustment of application rates in different field areas according to a pre-defined treatment map
- ISOBUS TC sectional control compliant - simplifies operation by turning spreader on/off automatically to avoid overlaps and misses



GT 400

- Backlit LCD single line display
- External record storage option
- External printer option
- Short field names with basic entry
- Displays weight with Start-Stop Loading, Field and Zero functions



NT 560 (with AutoLog™)

- AutoLog™
- Indicator displays actual tons/acres
- View and react to tons/acre reading by speeding up or slowing down
- View/Edit 26 character field names
- View/Edit the 6 character ID
- Software to create custom reports
- Calculating the nutrient value of your manure is easy with scales on your spreader.

NITRO 275RS - 10 TON MANURE SPREADER



Specifications

Capacity (Heaped)	294 cu.ft / 8.3 cu. m
Capacity (Struck)	201 cu. Ft. / 5.69 cu. m
Horse Power Req.	80 HP
Beater Diameter	34"
Beater Speed	420 RPM
PTO Speed (std/opt)	1000RPM / 540RPM
Shipping Weight (est.)	8,800 lbs. / 3,992 kg
Overall Length	23'5"
Overall Width (Tandem)	115.5"
Overall Width (Single)	118"



Model	Beater Assembly	Axle Type	Tire Size	Tire Type	Price
N275T425225	Vertical Beater	Tandem	425/22.5	Recap Truck	\$57,850.00
N275T550225	Vertical Beater	Tandem	550/22.5	Flotation /Bias Ply	\$60,750.00
N275S425225	Vertical Beater	Single	425/22.5	Recap Truck	\$54,900.00
N275S550225	Vertical Beater	Single	550/22.5	Flotation /Bias Ply	\$56,350.00
N275S48030	Vertical Beater	Single	480/30	Tractor Lug	\$62,150.00

Options	Description	Price
31578	Manual Flow Control	\$850.00
31797	Electric Flow Control	\$2,475.00
49440	Large 1000 PTO [1.75 x 20] in lieu of small 1000 pto [1.38 x 21] Factory installed	\$185.00
39290	2.0" Articulated Ball Hitch	\$515.00
45826	1.25" Insert Bushing for 2.0" Articulated Hitch	\$90.00
45827	1.5" Insert Bushing for 2.0" Articulated Hitch	\$90.00
41444	Rubber Seal Kit (incl. front & rear) for semi solids	\$920.00
43622	Tail Light Kit - With Automatic Activated Covers	\$1,260.00
43864	Flange Paddle Kit for Vertical Beaters	\$1,200.00
49490	Spinner Flange Paddle Kit for Vertical Beater	\$240.00
45865	Gate Indicator	\$930.00
N750LC	DigiStar Model # GT400 5 point scale system	\$8,785.00
N750LCNT560	DigiStar Model # NT560 (with GPS) 5 point scale system	\$13,765.00
N750LC-Athene-SL2	Athene ISO Bus Variable Rate Control System	\$15,590.00
N275SB	Single Axle Brake Kit (comes with 2 calipers)	\$3,450.00
N275TB	Tandem Axle Brake Kit (comes with 2 calipers)	\$3,450.00
49985	Scale Ready Axle (option required for in field scale installation at a later date)	\$1,175.00



NITRO 375RS - 13 TON MANURE SPREADER



Specifications	Nitro 375RS
Capacity (Heaped)	444 cu. ft. / 12.5 cu. m
Capacity (Struck)	266 cu. ft. / 7.53 cu. m
Horse Power Req.	90 HP
Beater Diameter	34"
Beater Speed	420 RPM
PTO Speed	1000RPM
Shipping Weight (est.)	9,139 lbs. / 4,145 kg
Overall Length	25'
Overall Width (Tandem)	115"
Overall Width (Single)	126"



Model	Beater Assembly	Axle Type	Tire Size	Tire Type	Price
N375T425225	Vertical Beaters	Tandem	425/22.5	Recap Truck	\$67,500.00
N375T550225	Vertical Beaters	Tandem	550/45-22.5	Floatation (Bias Ply)	\$70,450.00
N375S60034	Vertical Beaters	Single	600/65 R34	Tractor Tires (Radial)	\$73,150.00

Options	Description	Price
31578	Manual Flow Control	\$850.00
31797	Electric Flow Control	\$2,475.00
49440	Large 1000 PTO [1.75 x 20] in lieu of small 1000 pto [1.38 x 21] Factory installed	\$185.00
39290	2.0" Articulated Ball Hitch	\$515.00
45826	1.25" Insert Bushing for 2.0" Articulated Hitch	\$90.00
45827	1.5" Insert Bushing for 2.0" Articulated Hitch	\$90.00
41444	Rubber Seal Kit (incl. front & rear) for semi solids	\$920.00
47553	Flange Paddle Kit for Vertical Beaters	\$1,200.00
49487	Spinner Flange Paddle Kit for Vertical Beater	\$285.00
43622	Tail Light Kit - With Automatic Activated Covers	\$1,260.00
45861	Gate Indicator	\$930.00
N750LC	DigiStar Model # GT400 5 point scale system	\$8,785.00
N750LCNT560	DigiStar Model # NT560 (with GPS) 5 point scale system	\$13,765.00
N750LC-Athene-SL2	Athene ISO Bus Variable Rate Control System	\$15,590.00
N375SB	Single Axle Brake Kit (comes with 4 calipers)	\$5,510.00
N375TB	Tandem Axle Brake Kit (comes with 4 calipers)	\$6,950.00
49984	Scale Ready Axle (option required for in field scale installation at a later date)	\$1,660.00





NITRO 575RS - 16 TON MANURE SPREADER

Specifications	575RS
Capacity (Heaped)	576 cu. ft. / 16.3 cu. m
Capacity (Struck)	379 cu. ft. / 10.73 cu. m
Horse Power Req.	125 HP
Beater Diameter	34"
Beater Speed	420 RPM
PTO Speed	1000RPM
Shipping Weight (est.)	11,000 lbs. / 4,990 kg
Overall Length	27.5'
Overall Width (Tandem)	116"
Overall Width (Single)	131"



Model	Beater Assembly	Axle Type	Tire Size	Tire Type	Price
N575T425225	Vertical Beater	Tandem	425/22.5	Recap Truck	\$79,650.00
N575T550225	Vertical Beater	Tandem	550/45-22.5	Flotation (Bias Ply)	\$82,450.00
N575T700265	Vertical Beater	Tandem	700/50-26.5	Flotation (Bias Ply)	\$92,000.00
N575S71038	Vertical Beater	Single	710/70 R38	Tractor Lug (Radial)	\$84,450.00
N575T425225SD	Spinner Deck	Tandem	425/22.5	Recap Truck	\$93,100.00
N575T550225SD	Spinner Deck	Tandem	550/45-22.5	Flotation (Bias Ply)	\$96,000.00
N575T700265SD	Spinner Deck	Tandem	700/50-26.5	Flotation (Bias Ply)	\$105,500.00
N575S71038SD	Spinner Deck	Single	710/70 R38	Tractor Lug (Radial)	\$97,900.00

Options	Description	Price
31578	Manual Flow Control	\$850.00
31797	Electric Flow Control	\$2,475.00
49440	Large 1000 PTO [1.75 x 20] in lieu of small 1000 pto [1.38 x 21] Factory installed	\$185.00
39290	2.0" Articulated Ball Hitch	\$515.00
45826	1.25" Insert Bushing for 2.0" Articulated Hitch	\$90.00
45827	1.5" Insert Bushing for 2.0" Articulated Hitch	\$90.00
41444	Rubber Seal Kit (incl. front & rear) for semi solids	\$920.00
47553	Flange Paddle Kit for Vertical Beaters	\$1,200.00
49487	Spinner Flange Paddle Kit for Vertical Beater	\$285.00
43673	Tail Light Kit - With Automatic Activated Covers	\$1,260.00
45862	Gate Indicator	\$930.00
TLVSSE575	Silage Side Extensions	\$4,600.00
N750LC	DigiStar Model # GT400 5 point scale system	\$8,785.00
N750LCNT560	DigiStar Model # NT560 (with GPS) 5 point scale system	\$13,765.00
N750LC-Athene-SL2	Athene ISO Bus Variable Rate Control System	\$15,590.00
N575SB	Single Axle Brake Kit (comes with 4 calipers)	\$6,500.00
N575TB	Tandem Axle Brake Kit (comes with 4 calipers)	\$6,950.00
49937	Scale Ready Axle (option required for in field scale installation at a later date)	\$2,150.00



NITRO 725^{RS} - 19 TON MANURE SPREADER



Specifications	725RS
Capacity (Heaped)	767 cu. ft. / 21.7 cu. m
Capacity (Struck)	507 cu. ft. / 14.3 cu. m
Horse Power Req.	165+ HP
Beater Diameter	36"
Beater Speed	420 RPM
PTO Speed	1000RPM
Shipping Weight (est.)	15,652 lbs / 7,099 kg
Overall Length	30.3'
Overall Width (Tandem)	136"
Overall Width (Single)	136"



Production model may differ from shown.

Model	Beater Assembly	Axle Type	Tire Size	Tire Type	Price
N725T700265	Vertical Beater	Tandem	700/50-26.5	Flotation (Bias Ply)	\$110,150.00
N725S71042	Vertical Beater	Single	710/70 R42	Tractor (Radial)	\$110,650.00
N725T700265SD	Spinner Deck	Tandem	700/50-26.5	Flotation (Bias Ply)	\$128,250.00
N725S71042SD	Spinner Deck	Single	710/70 R42	Tractor (Radial)	\$128,850.00

Options	Description	Price
31578	Manual Flow Control	\$850.00
31797	Electric Flow Control	\$2,475.00
49440	Large 1000 PTO [1.75 x 20] in lieu of small 1000 pto [1.38 x 21] Factory installed	\$185.00
39290	2.0" Articulated Ball Hitch	\$515.00
45826	1.25" Insert Bushing for 2.0" Articulated Hitch	\$90.00
45827	1.5" Insert Bushing for 2.0" Articulated Hitch	\$90.00
41443	Rubber Seal Kit (incl. front & rear) for semi solids	\$1,080.00
47553	Flange Paddle Kit for Vertical Beaters	\$1,200.00
43674	Tail Light Kit - With Automatic Activated Covers	\$1,260.00
45414	Gate Indicator	\$1,040.00
TLVSSE725	Silage Side Extensions	\$6,415.00
N725FS	Model #725 Front tongue suspension	\$4,095.00
N750LC	DigiStar Model # GT400 5 point scale system	\$8,785.00
N750LCNT560	DigiStar Model # NT560 (with GPS) 5 point scale system	\$13,765.00
N750LC-Athene-SL2	Athene ISO Bus Variable Rate Control System	\$15,590.00
N725SB	Single Axle Brake Kit (comes with 4 calipers)	\$6,500.00
N725TB	Tandem Axle Brake Kit (comes with 4 calipers)	\$6,950.00
49937	Scale Ready Axle (option required for in field scale installation at a later date)	\$2,995.00



NITRO 450 - 13 TON MANURE SPREADER



Specifications	Nitro 450
Capacity (Heaped)	481 cu. ft. / 13.62 cu. m
Capacity (Struck)	290 cu. ft. / 8.2 cu. m
Horse Power Req.	125+ HP
Beater Diameter	34"
Beater Speed	420 RPM
PTO Speed	1000RPM
Shipping Weight (est.)	11,355 lbs. / 5,150 kg
Overall Length	27'
Overall Width (Tandem)	116"
Overall Width (Single)	115"



Model	Beater Assembly	Axle Type	Tire Size	Tire Type	Price
N450S60034	Vertical	Single	600/65 R34	Tractor (Radial)	\$87,450.00
N450T425225	Vertical	Tandem	425/22.5	Recap Truck	\$85,800.00
N450T550225	Vertical	Tandem	550/45-22.5	Flotation (Bias Ply)	\$88,550.00
N450S60034SD	Spinner Deck	Single	600/65 R34	Tractor (Radial)	\$100,900.00
N450T425225SD	Spinner Deck	Tandem	425/22.5	Recap Truck	\$99,300.00
N450T550225SD	Spinner Deck	Tandem	550/45-22.5	Flotation (Bias Ply)	\$102,100.00

Options	Description	Price
31578	Manual Flow Control	\$850.00
31797	Electric Flow Control	\$2,475.00
49440	Large 1000 PTO [1.75 x 20] in lieu of small 1000 pto [1.38 x 21] Factory installed	\$185.00
39290	2.0" Articulated Ball Hitch	\$515.00
45826	1.25" Insert Bushing for 2.0" Articulated Hitch	\$90.00
45827	1.5" Insert Bushing for 2.0" Articulated Hitch	\$90.00
41444	Rubber Seal Kit (incl. front & rear) for semi solids	\$920.00
47553	Flange Paddle Kit for Vertical Beaters	\$1,200.00
49487	Spinner Flange Paddle Kit for Vertical Beater	\$285.00
45816	Gate Indicator	\$930.00
43673	Tail Light Kit - With Automatic Activated Covers	\$1,260.00
N450FS	Model #450 Front tongue suspension	\$4,100.00
N750LC	DigiStar Model # GT400 5 point scale system	\$8,785.00
N750LCNT560	DigiStar Model # NT560 (with GPS) 5 point scale system	\$13,765.00
N750LC-Athene-SL2	Athene ISO Bus Variable Rate Control System	\$15,590.00
N450SB	Single Axle Brake Kit (comes with 4 calipers)	\$5,510.00
N450TB	Tandem Axle Brake Kit (comes with 4 calipers)	\$6,950.00



NITRO 600 - 17 TON MANURE SPREADER



Specifications	Nitro 600
Capacity (Heaped)	636 cu. ft. / 18 cu. m
Capacity (Struck)	406 cu. ft. / 11.49 cu. m
Horse Power Req.	150+ HP
Beater Diameter	34"
Beater Speed	420 RPM
PTO Speed	1000RPM
Shipping Weight (est.)	13,930 lbs. / 6,319 kg
Overall Length	29.5'
Overall Width (Tandem)	131"
Overall Width (Single)	131"



Model	Beater Assembly	Axle Type	Tire Size	Tire Type	Price
N600S71038	Vertical	Single	710/70 R38	Tractor (Radial)	\$104,350.00
N600T425225	Vertical	Tandem	425/22.5	Recap Truck	\$97,450.00
N600T550225	Vertical	Tandem	550/45-22.5	Flotation (Bias Ply)	\$100,250.00
N600T700265	Vertical	Tandem	700/50-26.5	Flotation (Bias Ply)	\$107,950.00
N600S71038SD	Spinner Deck	Single	710/70 R38	Tractor (Radial)	\$117,850.00
N600T425225SD	Spinner Deck	Tandem	425/22.5	Recap Truck	\$110,900.00
N600T550225SD	Spinner Deck	Tandem	550/45-22.5	Flotation (Bias Ply)	\$113,850.00
N600T700265SD	Spinner Deck	Tandem	700/50-26.5	Flotation (Bias Ply)	\$121,350.00

Options	Description	Price
31578	Manual Flow Control	\$850.00
31797	Electric Flow Control	\$2,475.00
49440	Large 1000 PTO [1.75 x 20] in lieu of small 1000 pto [1.38 x 21] Factory installed	\$185.00
39290	2.0" Articulated Ball Hitch	\$515.00
45826	1.25" Insert Bushing for 2.0" Articulated Hitch	\$90.00
45827	1.5" Insert Bushing for 2.0" Articulated Hitch	\$90.00
41444	Rubber Seal Kit (incl. front & rear) for semi solids	\$920.00
41504	Flange Paddle Kit for Vertical Beaters	\$1,200.00
49487	Spinner Flange Paddle Kit for Vertical Beater	\$285.00
45816	Gate Indicator	\$930.00
43674	Tail Light Kit - With Automatic Activated Covers	\$1,260.00
N600FS	Model #600 Front tongue suspension	\$4,100.00
TLVSSE600	Silage Side Extensions	\$6,160.00
N750LC	DigiStar Model # GT400 5 point scale system	\$8,785.00
N750LCNT560	DigiStar Model # NT560 (with GPS) 5 point scale system	\$13,765.00
N750LC-Athene-SL2	Athene ISO Bus Variable Rate Control System	\$15,590.00
N600SB	Single Axle Brake Kit (comes with 4 calipers)	\$6,500.00
N600TB	Tandem Axle Brake Kit (comes with 4 calipers)	\$6,950.00



NITRO 750 - 20 TON MANURE SPREADER



Specifications	Nitro 750
Capacity (Heaped)	838 cu. ft. / 23.72 cu. m
Capacity (Struck)	560 cu. ft. / 15.86 cu. m
Horse Power Req.	180 HP+
Beater Diameter	36"
Beater Speed	420 RPM
PTO Speed	1000RPM
Shipping Weight (est.)	16,195 lbs. / 7,346 kg
Overall Length	32.5'
Overall Width (Tandem)	136"
Overall Width (Single)	136"



Model	Beater Assembly	Axle Type	Tire Size	Tire Type	Price
N750S71042	Vertical	Single	710/70 R42	Tractor (Radial)	\$121,150.00
N750T700265	Vertical	Tandem	700/50-26.5	Flotation (Bias Ply)	\$126,050.00
N750T710265	Vertical	Tandem	710/50-26.5	Flotation (Radial)	\$146,300.00
N750S71042SD	Spinner Deck	Single	710/70 R42	Tractor (Radial)	\$139,300.00
N750T700265SD	Spinner Deck	Tandem	700/50-26.5	Flotation (Bias Ply)	\$144,300.00
N750T710265SD	Spinner Deck	Tandem	710/50-26.5	Flotation (Radial)	\$146,300.00

Options	Description	Price
31578	Manual Flow Control	\$850.00
31797	Electric Flow Control	\$2,475.00
49440	Large 1000 PTO [1.75 x 20] in lieu of small 1000 pto [1.38 x 21] Factory installed	\$185.00
39290	2.0" Articulated Ball Hitch	\$515.00
45826	1.25" Insert Bushing for 2.0" Articulated Hitch	\$90.00
45827	1.5" Insert Bushing for 2.0" Articulated Hitch	\$90.00
41443	Rubber Seal Kit (incl. front & rear) for semi solids	\$1,080.00
43675	Tail Light Kit - With Automatic Activated Covers	\$1,260.00
45813	Gate Indicator	\$1,040.00
41503	Flange Paddle Kit for Vertical Beaters	\$1,200.00
N750FS	Model #750 Front tongue suspension	\$4,300.00
TLVSSE750	Silage Side Extensions	\$6,485.00
N750LC	DigiStar Model # GT400 5 point scale system	\$8,785.00
N750LCNT560	DigiStar Model # NT560 (with GPS) 5 point scale system	\$13,765.00
N750LC-Athene-SL2	Athene ISO Bus Variable Rate Control System	\$15,590.00
N750SB	Single Axle Brake Kit (comes with 4 calipers)	\$6,500.00
N750TB	Tandem Axle Brake Kit (comes with 4 calipers)	\$6,950.00
43896	Left Hand Spread Limiter (Spinner Deck)	\$1,840.00
43897	Right Hand Spread Limiter (Spinner Deck)	\$1,840.00



NITRO 950 - 25 TON MANURE SPREADER



Specifications	Nitro 950
Capacity (Heaped)	1,028 cu. ft. / 29.10 cu. m
Capacity (Struck)	695 cu. ft. / 19.68 cu. m
Horse Power Req.	200 HP
Beater Diameter	36"
Beater Speed	420 RPM
PTO Speed	1000RPM
Shipping Weight (est.)	19,890 lbs. / 9,022 kg
Overall Length	35.25'
Overall Width (Tandem)	136"



Model	Beater Assembly	Axle Type	Tire Size	Tire Type	Price
N950T750305	Vertical	Tandem	750/60-30.5	Flotation (Bias Ply)	\$159,800.00
N950T750305R	Vertical	Tandem	750/60-30.5	Flotation (Radial)	\$167,550.00
N950T750305SD	Spinner Deck	Tandem	750/60-30.5	Flotation (Bias Ply)	\$177,850.00
N950T750305RSD	Spinner Deck	Tandem	750/60-30.5	Flotation (Radial)	\$185,800.00

Options	Description	Price
31578	Manual Flow Control	\$850.00
31797	Electric Flow Control	\$2,475.00
39290	2.0" Articulated Ball Hitch	\$515.00
45826	1.25" Insert Bushing for 2.0" Articulated Hitch	\$90.00
45827	1.5" Insert Bushing for 2.0" Articulated Hitch	\$90.00
41443	Rubber Seal Kit (incl. front & rear) for semi solids	\$1,080.00
41503	Flange Paddle Kit for Vertical Beaters	\$1,200.00
43675	Tail Light Kit - With Automatic Activated Covers	\$1,260.00
45813	Gate Indicator	\$1,040.00
TLVSSE950	Silage Side Extensions	\$6,685.00
N750LC	DigiStar Model # GT400 5 point scale system	\$8,785.00
N750LCNT560	DigiStar Model # NT560 (with GPS) 5 point scale system	\$13,765.00
N750LC-Athene-SL2	Athene ISO Bus Variable Rate Control System	\$15,590.00
N950TB	Brake Kit (comes with 4 calipers)	\$8,216.00
43896	Left Hand Spread Limiter (Spinner Deck)	\$1,840.00
43897	Right Hand Spread Limiter (Spinner Deck)	\$1,840.00



NITRO 950TRI - 25 TON MANURE SPREADER



Specifications	Nitro 950.3
Capacity (Heaped)	1,028 cu. ft. / 29.10 cu. m
Capacity (Struck)	695 cu. ft. / 19.68 cu. m
Horse Power Req.	200 HP
Beater Diameter	36"
Beater Speed	420 RPM
PTO Speed	1000RPM
Shipping Weight (est.)	19,890 lbs. / 9,022 kg
Overall Length	35.25'
Overall Width (Tri-Axle)	155"



Note: Tri-Axles are equipped with both a front and rear steering axles.

Model	Beater Assembly	Axle Type	Tire Size	Tire Type	Price
N950TRI700265	Vertical	Tri-Axle	700/50-26.5	Floatation (Bias Ply)	\$221,150.00
N950TRI700265SD	Spinner Deck	Tri-Axle	700/50-26.5	Floatation (Bias Ply)	\$239,400.00

Options	Description	Price
31578	Manual Flow Control	\$850.00
31797	Electric Flow Control	\$2,475.00
39290	2.0" Articulated Ball Hitch	\$515.00
45826	1.25" Insert Bushing for 2.0" Articulated Hitch	\$90.00
45827	1.5" Insert Bushing for 2.0" Articulated Hitch	\$90.00
41443	Rubber Seal Kit (incl. front & rear) for semi solids	\$1,080.00
41503	Flange Paddle Kit for Vertical Beaters	\$1,200.00
43675	Tail Light Kit - With Automatic Activated Covers	\$1,260.00
45813	Gate Indicator	\$1,040.00
TLVSSE950	Silage Side Extensions	\$6,685.00
N750LC	DigiStar Model # GT400 5 point scale system	\$8,785.00
N750LCNT560	DigiStar Model # NT560 (with GPS) 5 point scale system	\$13,765.00
N750LC-Athene-SL2	Athene ISO Bus Variable Rate Control System	\$15,590.00
Tire Upgrade	Michelin Cargo Bib 710/50R26.5 – Radials (Premium Tire)	\$32,475.00
N950TB	Brake Kit (comes with 4 calipers)	\$8,216.00
43896	Left Hand Spread Limiter (Spinner Deck)	\$1,840.00
43897	Right Hand Spread Limiter (Spinner Deck)	\$1,840.00



NITRO 1050 - 30 TON MANURE SPREADER



Specifications	Nitro 1050
Capacity (Heaped)	1,159 cu. ft. / 32.82 cu. m
Capacity (Struck)	769 cu. ft. / 21.77 cu. m
Horse Power Req.	200+ HP
Beater Diameter	36"
Beater Speed	420 RPM
PTO Speed	1000RPM
Shipping Weight (est.)	37,000 lbs.
Overall Length	39.25'
Overall Width (Tri-Axle)	155"



Note: Tri-Axles are equipped with both a front and rear steering axles.

Model	Beater Assembly	Axle Type	Tire Size	Tire Type	Price
N1050700265	Vertical	Tri-Axle	700/50-26.5	Floatation (Bias Ply)	\$236,100.00
N1050700265SD	Spinner Deck	Tri-Axle	700/50-26.5	Floatation (Bias Ply)	\$254,350.00

Options	Description	Price
31578	Manual Flow Control	\$850.00
31797	Electric Flow Control	\$2,475.00
39290	2.0" Articulated Ball Hitch	\$515.00
45826	1.25" Insert Bushing for 2.0" Articulated Hitch	\$90.00
45827	1.5" Insert Bushing for 2.0" Articulated Hitch	\$90.00
41443	Rubber Seal Kit (incl. front & rear) for semi solids	\$1,080.00
41503	Flange Paddle Kit for Vertical Beaters	\$1,200.00
43675	Tail Light Kit - With Automatic Activated Covers	\$1,260.00
45813	Gate Indicator	\$1,040.00
TLVSSE1050	Silage Side Extensions	\$7,105.00
N750LC	DigiStar Model # GT400 5 point scale system	\$8,785.00
N750LCNT560	DigiStar Model # NT560 (with GPS) 5 point scale system	\$13,765.00
N750LC-Athene-SL2	Athene ISO Bus Variable Rate Control System	\$15,590.00
Tire Upgrade	Michelin Cargo Bib 710/50R26.5 – Radials (Premium Tire)	\$32,475.00
N1050TB	Brake Kit (comes with 4 calipers)	\$8,216.00
43896	Left Hand Spread Limiter (Spinner Deck)	\$1,840.00
43897	Right Hand Spread Limiter (Spinner Deck)	\$1,840.00



Tire Options



Single axle options:

275RS, 375RS, 575RS, 725RS, 450, 600, 750



425/22.5
Recap Truck

550/45
R22.5

480/70
R30

600/65
R34

710/70
R38

710/70
R42

Tandem axle options:

275RS, 375RS, 575RS, 725RS, 450, 600, 750, 950



425 x 22.5
Recap Truck

550/45
R22.5

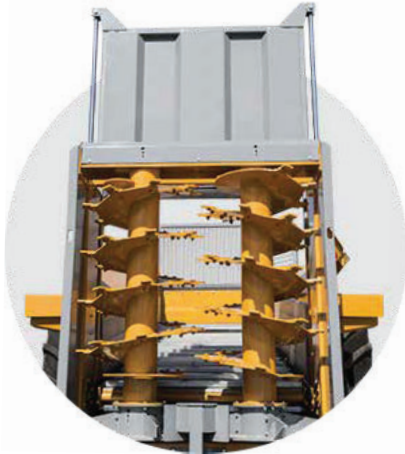
700/50
R26.5

750/60
R30.5

**Also used
for Tri-axle
spreaders*



Vertical Beater Assemblies



Dynamically Balanced



Reversible Knives



Beater Wedge*

Part Number	Compatibility	Price
42224	275RS	\$16,705.00
37590	375RS	\$18,765.00
45307	725RS	\$21,495.00
450-106	575RS, 450	\$19,180.00
600-308	600	\$19,180.00
700-616	750, 950, 9503, 1050	\$21,495.00

*Beater wedge is standard on 275RS, 375RS, 575RS, 450, and 600 models (not required on other models).

Spinner Deck Assemblies



Dual Horizontal Beaters



Dual Spinners



Drop-On Adjustment

Part Number	Compatibility	Price
39647	600	\$32,685.00
39648	575RS, 450	\$32,685.00
43014	750, 950, 9503, 1050	\$39,795.00
45871	725RS	\$39,795.00

