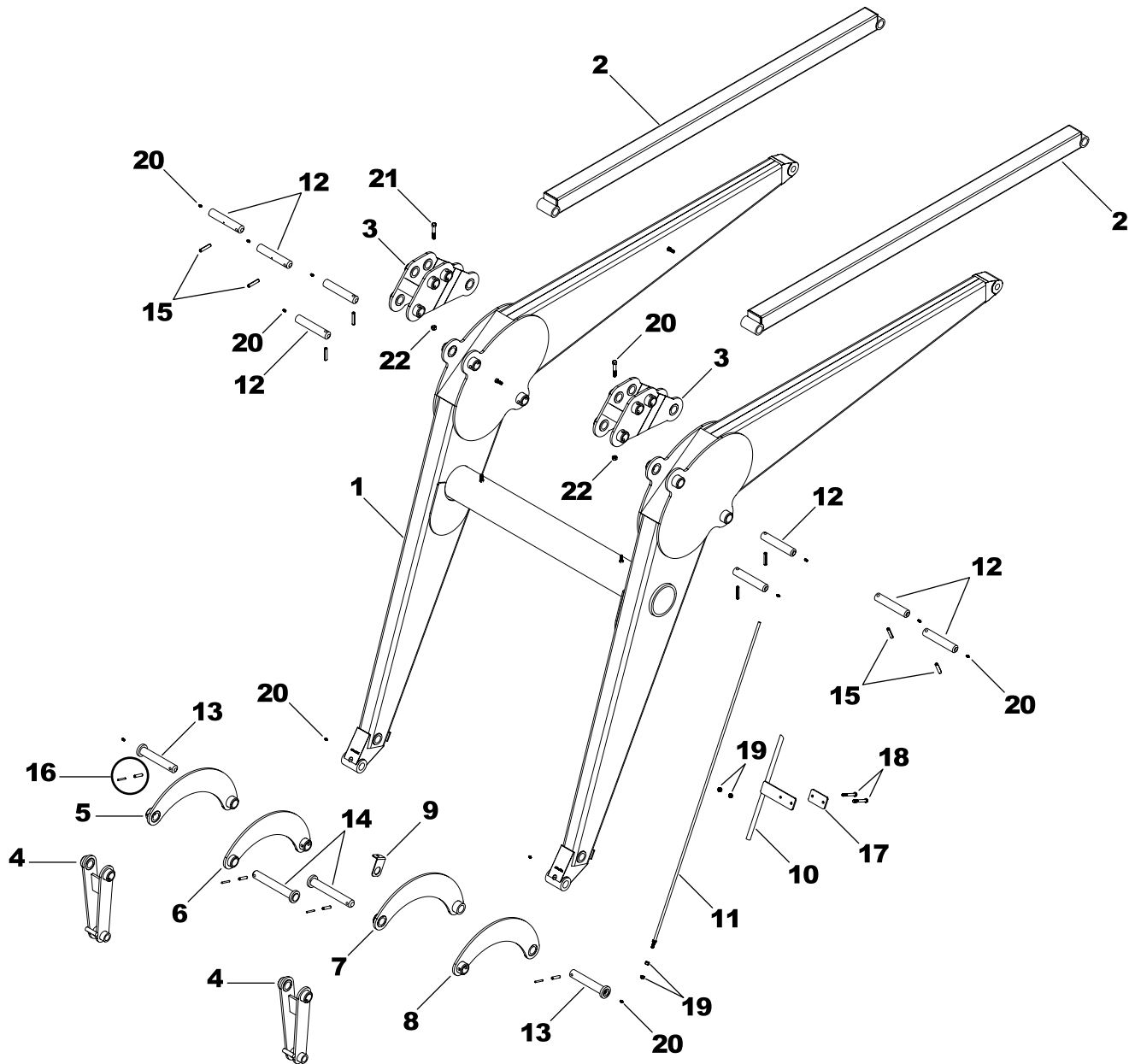


BASIC LOADER TOWER REPLACEMENT PARTS

Ref.	Part No.	Description	Qty.	Ref.	Part No.	Description	Qty.
1	NDT-12AAS-R	TOWER (RIGHT)	1	11	HHS1011028	5/8" X 1-3/4" BOLT	4
2	NDT-12AAS-L	TOWER (LEFT)	1	12	HHS1011080	5/8" X 5" BOLT	4
-	NAT-120BCOM-R	SLIDE LOCK COMPLETE* (RIGHT)	-	13	HTN1011	5/8" LOCK NUT	12
-	NAT-120BCOM-L	SLIDE LOCK COMPLETE* (LEFT)	-	14	LWM10	5/8" LOCK WASHER	4
3	NAT-120BAS-R	LATCH ASSEMBLY (RIGHT)	1	15	ZER1805	GREASE ZERK	6
4	NAT-120BAS-L	LATCH ASSEMBLY (LEFT)	1	16	XAF-54C	PIN	6
5	CBF1011056	5/8" X 3-1/2" CARRIAGE BOLTS	4	17	DRP0700036	DRIVE LOCK PIN	6
6	NAT-140	EYE BOLTS	4	18	RT-15DAS	LOADER SHOE ASSEMBLY	2
7	RLG-51	SPRING	2	19	0H010D	FRONT WRAP** (STANDARD)	1
8	NAT-126	RIVET	2	20	OH-19	CLAMP	1
9	NAT-106-R	LATCH (RIGHT)	1	21	HHS0616032	3/8" X 2" BOLT	1
10	NAT-106-L	LATCH (LEFT)	1	22	HTN0616	3/8" LOCK NUT	1

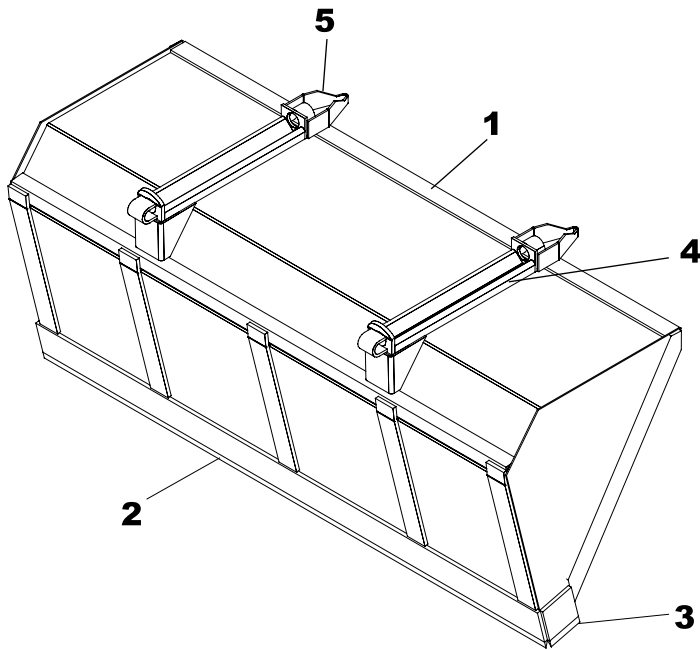
NOTE: *NAT-120BCOM-R contains Parts 3, 5(2), 6(2), 7, 8, 9, 13(2).

*NAT-120BCOM-L contains Parts 4, 5(2), 6(2), 7, 8, 9, 13(2) ***Varies by Tractor (Standard Wrap is 0H010D)



BASIC LOADER ARM REPLACEMENT PARTS

Ref.	Part No.	Description	Qty.	Ref.	Part No.	Description	Qty.
1	NDF-4AS	FRAME (ARMS ONLY)	1	12	XAF-54C	PIN (HEADLESS)	8
2	NDF-23AS	SELF LEVELING TUBE	2	13	XAF-55AS	PIN	2
3	NDF-29AAS	HINGE PLATE ASSEMBLY	2	14	LMF-125AS	PIN	2
4	NDF-15AAS	LINKAGE ASSEMBLY	2	15	DRP0700036	DRIVE LOCK PIN	8
5	NDF-10AS-R	OUTSIDE LINKAGE	1	16	DRP0600027	DOUBLE ROLL PIN	4
6	NDF-11AS-R	INSIDE LINKAGE	1	17	NDF-50	CLAMP PLATE	1
7	NDF-11AS-L	INSIDE LINKAGE	1	18	HHS0616048	3/8" X 3" BOLT	2
8	NDF-10AS-L	OUTSIDE LINKAGE	1	19	HTN0616	3/8" LOCK NUT	4
9	NDF-16	GAUGE ROD END	1	20	ZER1805	GREASE ZERK	12
10	NDF-31AS	GAUGE ROD HOLDER	1	21	HHS0714040	7/16" X 2-1/2" BOLT	2
11	NDF-47	GAUGE ROD	1	22	HTN0714	7/16" LOCK NUT	2



BUCKET

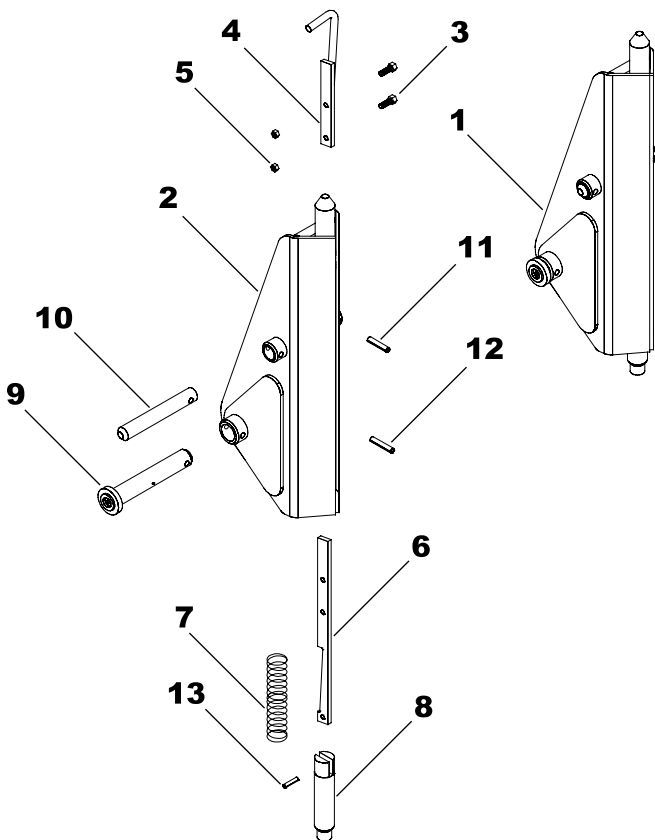
Ref.	Part No.	Description	Qty.
1	84Q425	84" BUCKET COMPLETE*	-
1	90Q425	90" BUCKET COMPLETE*	-
1	96Q429	96" BUCKET COMPLETE*	-
2	SB-14	84" CUTTING BLADE*	-
2	LB-14	90" CUTTING BLADE*	-
2	CB-14	96" CUTTING BLADE*	-
3	SB-15	SIDE BLADE	2
4	C-2	RECEIVER ADAPTER	2
5	JB-22	ATTACHMENT GUIDE (OPTION)	2

*Check width of the bucket and use the part number that matches. If your size is not given, contact your dealer or Westendorf Mfg. Co.

SNAP-ATTACH™ COUPLER (C-4B)

Ref.	Part No.	Description	Qty.
1	QC-1201COM	SNAP ATTACH™ (COMPLETE)	1
2	QC-1201AS	SNAP ATTACH™ (SHELL)	1
3	HHS0518016	5/16" X 1" BOLT	2
4	QC-6AAS	HANDLE	1
5	HTN0518	5/16" LOCK NUT	2
6	QC-8C	LATCH	1
7	QC-12	SPRING	1
8	QC-3A	PLUNGER	1
9	XAF-55AS	1-1/4" PIN / GREASE ZERK	1
10	LF-51A	1" PIN	1
11	DRP0600028	DOUBLE ROLL PIN	1
12	DRP0600032	DOUBLE ROLL PIN	1
13	RLP0500020	5/16" X 1-1/4" ROLL PIN	1

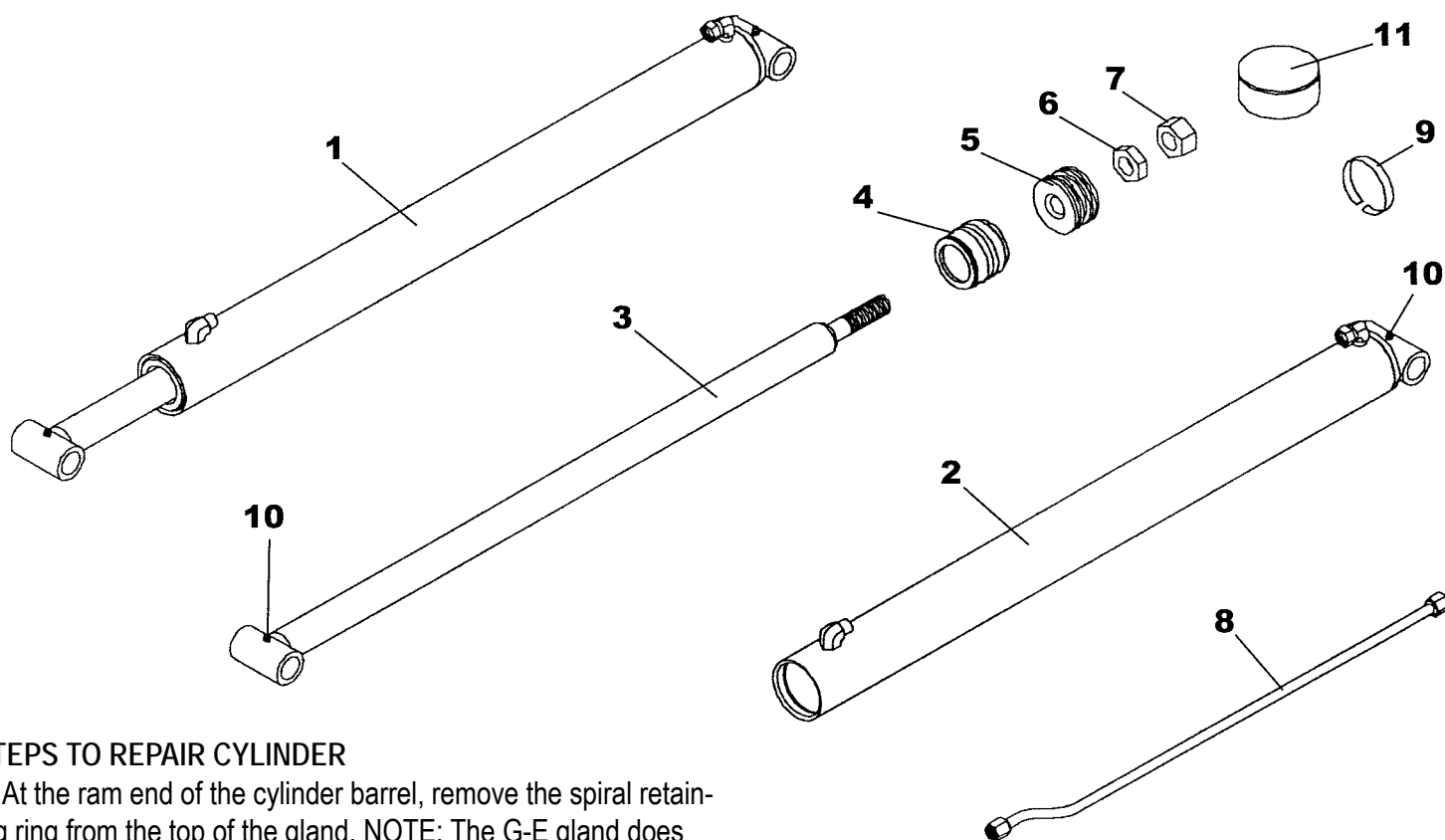
NOTE: Qty. shows the number of parts you will receive if you place an order using these part numbers. C-4B is two (QC-1201COM) couplers.



COSMETICS

Ref.	Part No.	Description	Qty.	Ref.	Part No.	Description	Qty.
1	DEC-48	DECAL KIT	1	3	V-9524-P	PINT BLACK PAINT	1
2	V-5403-A	RED SPRAY PAINT	1	4	V-9524-Q	QUART BLACK PAINT	1
	V-9524-A	BLACK SPRAY PAINT	1	5	V-9524-G	GALLON BLACK PAINT	1

NOTE: Warning decals are available at no charge. If they become damaged or missing, order part numbers DE-CW.



STEPS TO REPAIR CYLINDER

- 1) At the ram end of the cylinder barrel, remove the spiral retaining ring from the top of the gland. NOTE: The G-E gland does not use the spiral retaining ring.
- 2) Gently drive the gland into the barrel using a brass or non-marring punch until the round retaining ring is visible.
- 3) Remove the round retaining ring using a pair of long nose pliers. Remove the ram assembly (ram, gland, and piston) from the barrel.
- 4) Notice the direction they are pointing so they can be properly assembled.
- 5) Remove the jam nut and/or hex nut from the end of the ram.
- 6) Remove the old seals and rings and replace them with the new seals and rings. (Seal kits are packaged for several different cylinders. You may have extra parts.)
- 8) Clean the cylinder with cleaner and a clean lint free cloth.
- 9) Lubricate the seals and rings to aid assembly.
- 10) Assemble the cylinder by reversing the order.

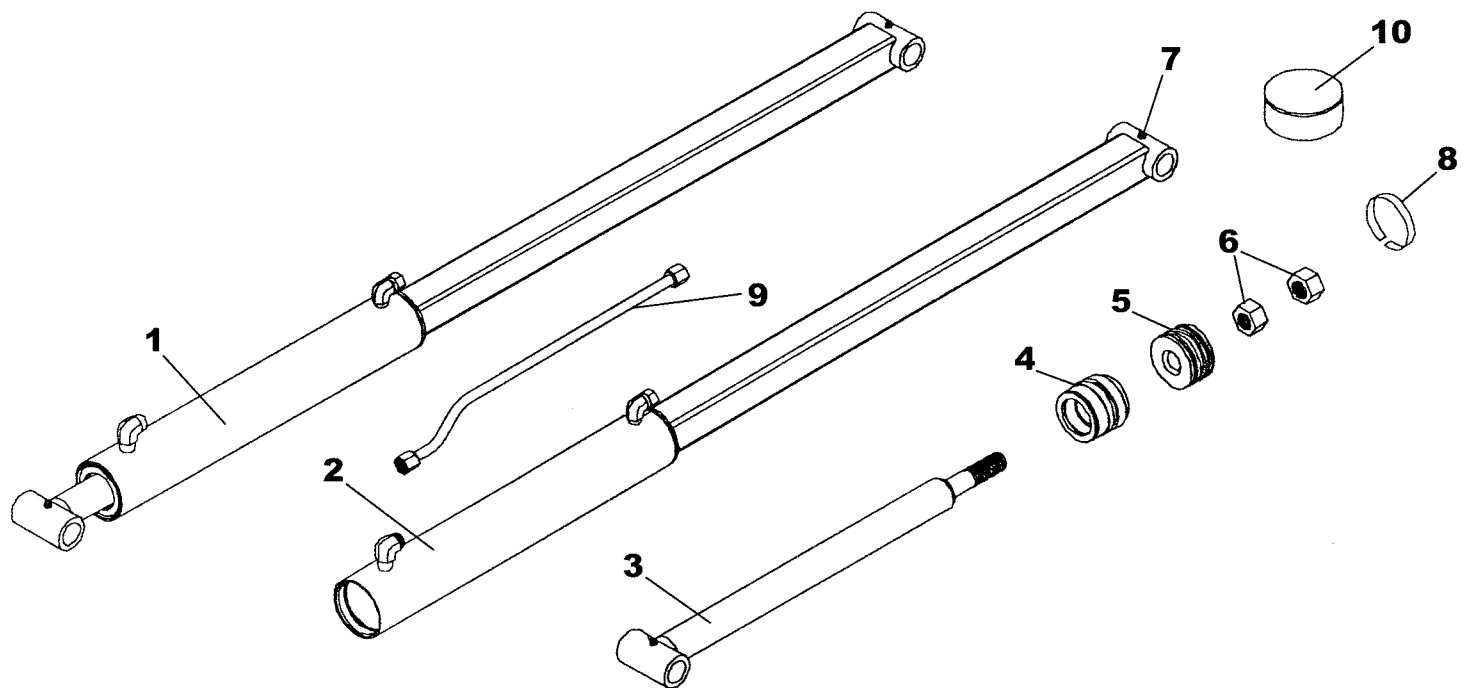
CYLINDER REPAIR TIPS

- When disassembling cylinders, keep the parts in correct orientation. Remove parts in sequence.
- Note the direction of the piston and gland. Lay out old seals and parts as they are removed.
- Assemble cylinder in the proper order; lubricate to aid assembly.

LIFT CYLINDER REPLACEMENT PARTS

Ref.	Part No.	Description	Qty.
1	L-24A	CYLINDER (COMPLETE)	1
2	L-2401A	CYLINDER BARREL	1
3	L-2410A	CYLINDER RAM	1
4	G-L	GLAND	1
5	P-B	PISTON	1
6	HFN1614	HEX NUT	1
7	HJN1614	HEX JAM NUT	1
8	OLT-2	OIL LINE	1
9	BAND15	METAL BAND	1
10	ZER1805	GREASE FITTING	2
11	#4CK	SEAL REPAIR KIT*	-

NOTE: *Seal kit contains parts to repair one cylinder.



STEPS TO REPAIR CYLINDER

- 1) At the ram end of the cylinder barrel, remove the spiral retaining ring from the top of the gland.
- 2) Gently drive the gland into the barrel using a brass or non-marring punch until the round retaining ring is visible.
- 3) Remove the round retaining ring using a pair of long nose pliers. Remove the ram assembly (ram, gland, and piston) from the barrel.
- 4) Notice the direction they are pointing so they can be properly assembled.
- 5) Remove the jam nut and/or hex nut from the end of the ram.
- 6) Remove the old seals and rings and replace them with the new seals and rings. (Seal kits are packaged for several different cylinders. You may have extra parts.)
- 8) Clean the cylinder with cleaner and a clean lint free cloth.
- 9) Lubricate the seals and rings to aid assembly.
- 10) Assemble the cylinder by reversing the order.

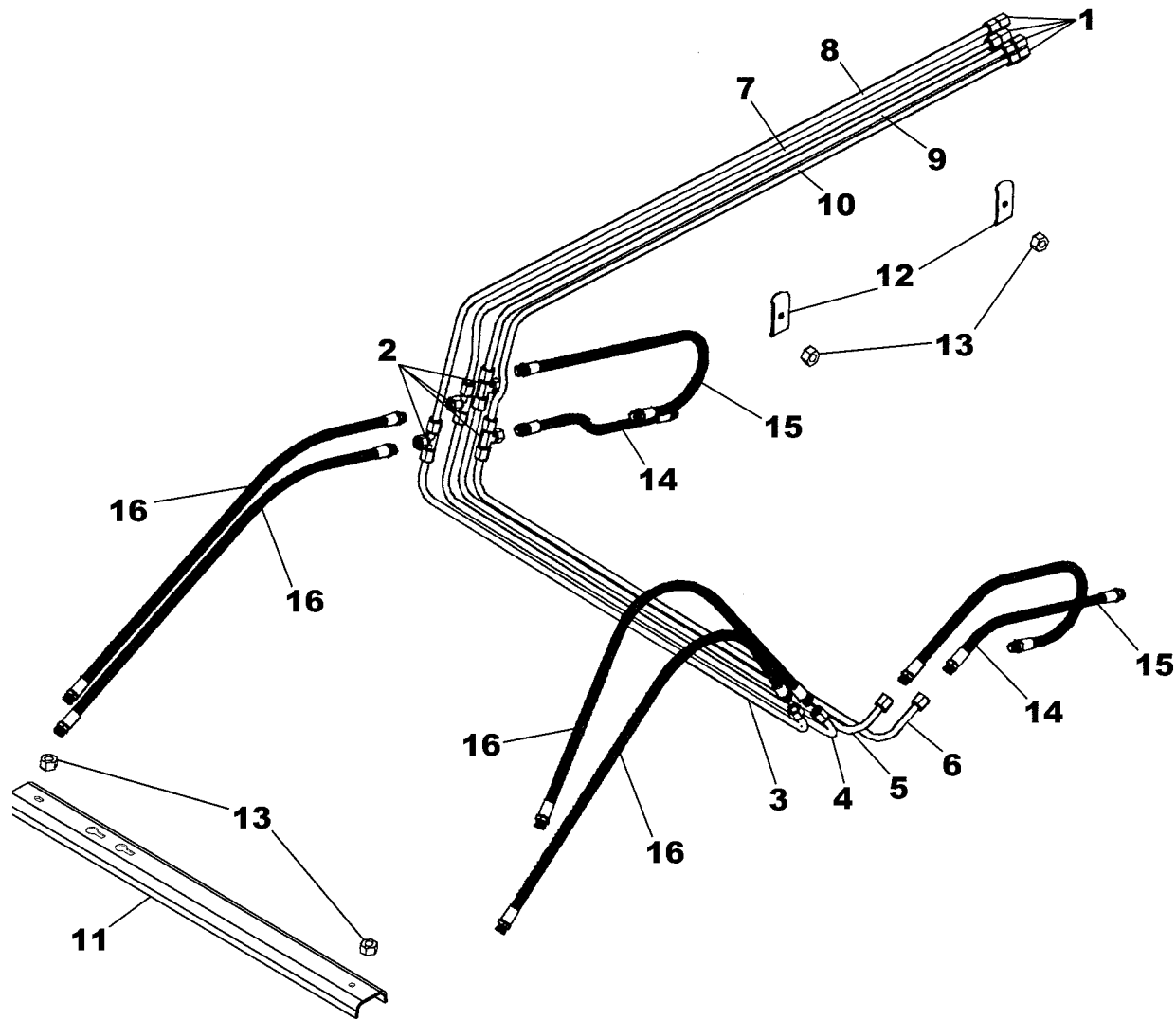
CYLINDER REPAIR TIPS

- When disassembling cylinders, keep the parts in correct orientation. Remove parts in sequence.
- Note the direction of the piston and gland. Lay out old seals and parts as they are removed.
- Assemble cylinder in the proper order; lubricate to aid assembly.

BUCKET CYLINDER REPLACEMENT PARTS

Ref.	Part No.	Description	Qty.
1	B-37B	CYLINDER (COMPLETE)	1
2	B-3701B	CYLINDER BARREL	1
3	B-3710A	CYLINDER RAM	1
4	G-L	GLAND	1
5	P-B	PISTON	1
6	HFN1614	HEX NUT	2
7	ZER1805	GREASE FITTING	2
8	BAND15	METAL BAND	1
9	OLT-143	OIL LINE	1
10	#4CK	SEAL REPAIR KIT*	-

*NOTE: *Seal kit contains parts to repair one cylinder.*



BASIC HYDRAULIC LINE REPLACEMENT PARTS

Ref.	Part No.	Description	Qty.	Ref.	Part No.	Description	Qty.
1	PF-FFC8	FEMALE CONNECTORS	4	9	OLT-471	OIL LINE	1
2	PF-FSBT8	SWIVEL NUT TEE	4	10	OLT-472	OIL LINE	1
3	OLT-473	OIL LINE	1	11	OH-1A	OIL LINE COVER	1
4	OLT-142	OIL LINE	1	12	OH-3C	OIL LINE HOLDER	2
5	OLT-141	OIL LINE	1	13	HTN0616	3/8" LOCK NUT	4
6	OLT-474	OIL LINE	1	14	H06020FF	20" HOSE	2
7	OLT-469	OIL LINE	1	15	H06030FF	30" HOSE	2
8	OLT-470	OIL LINE	1	16	H06040FF	40" HOSE	4