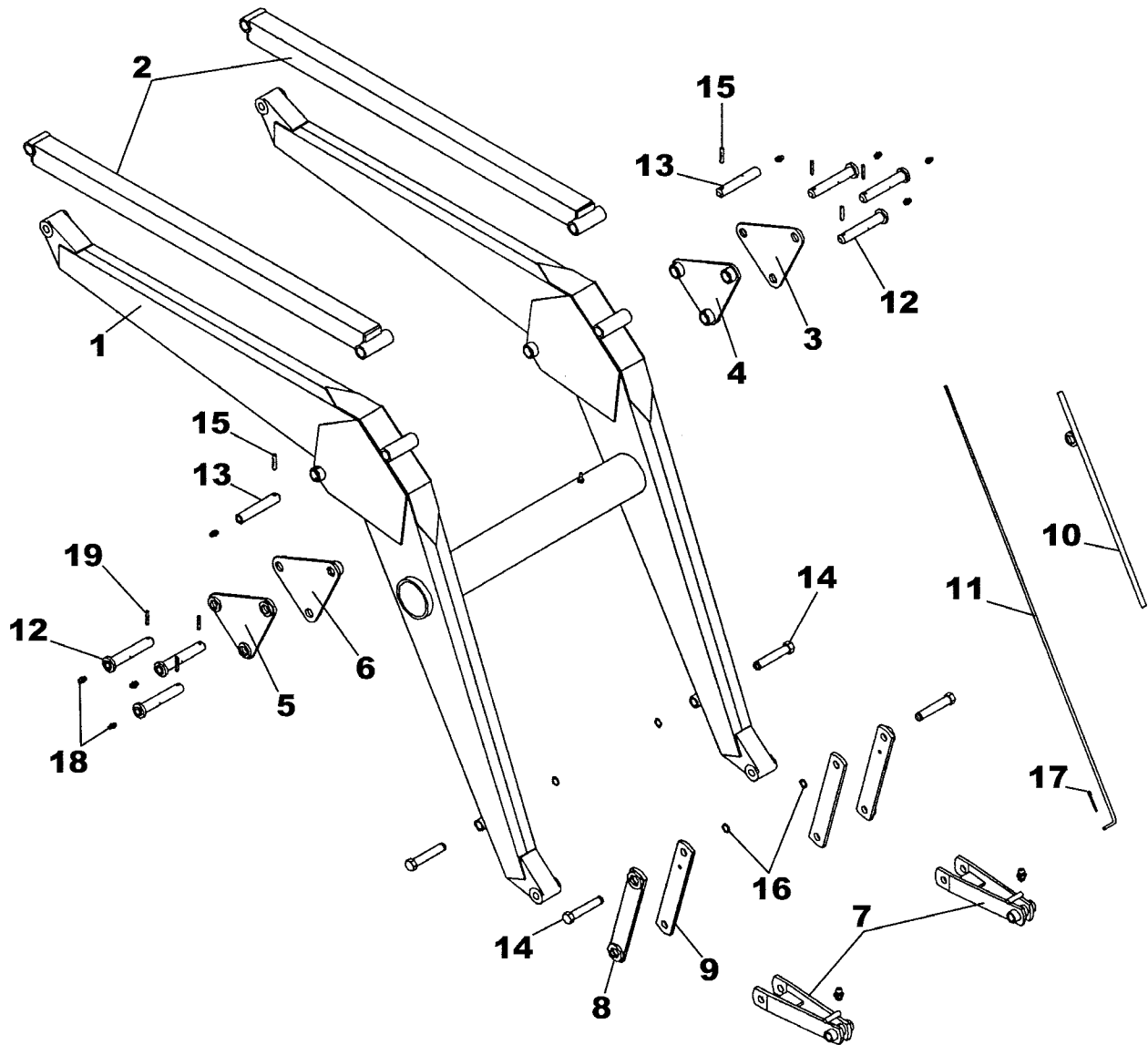


BASIC LOADER TOWER REPLACEMENT PARTS

Ref.	Part No.	Description	Qty.	Ref.	Part No.	Description	Qty.
1	RCT-12AAS-R	TOWER (RIGHT)	1	10	NAT-106A-L	LATCH (LEFT)	1
2	RCT-12AAS-L	TOWER (LEFT)	1	11	HHS1011080	5/8" x 4-1/2" BOLT	4
	NAT-120COM-R	SLIDE LOCK COMPLETE - RIGHT*	-	12	HHS1011028	5/8" x 1-3/4" BOLT	4
	NAT-120COM-L	SLIDE LOCK COMPLETE - LEFT*	-	13	HTN1011	5/8" LOCK NUT	12
3	NAT-120BAS-R	LATCH ASSEMBLY- RIGHT	1	14	LWM10	5/8" LOCK WASHER	4
4	NAT-120BAS-L	LATCH ASSEMBLY - LEFT	1	15	ZER1805	GREASE ZERK	6
5	CBF10111056	5/8" x 3 -1/2" CARRIAGE BOLT	4	16	XAF-54C	PIN	6
6	NAT-140	EYE BOLTS	4	17	RLP0700036	ROLL PIN	6
7	RLG-51	SPRING	2	18	RT-15FAS	LOADER SHOE ASSEMBLY	2
8	NAT-126	RIVET	2	19	0H004E	FRONT WRAP (STANDARD)**	1
9	NAT-106A-R	LATCH (RIGHT)	1				

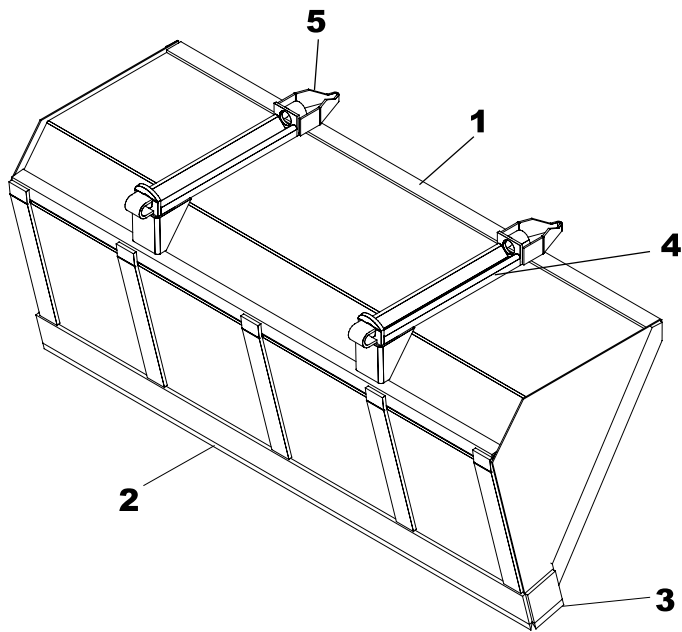
NOTE: *NAT-120COM-R contains parts 3, 5(2), 6(2), 7, 8, 9, 13(4). *NAT-120COM-L contains parts 4, 5(2), 6(2), 7, 8, 10, 13(4).

**Varies by Tractor (Standard Wrap is 0H004E).



BASIC LOADER ARM REPLACEMENT PARTS

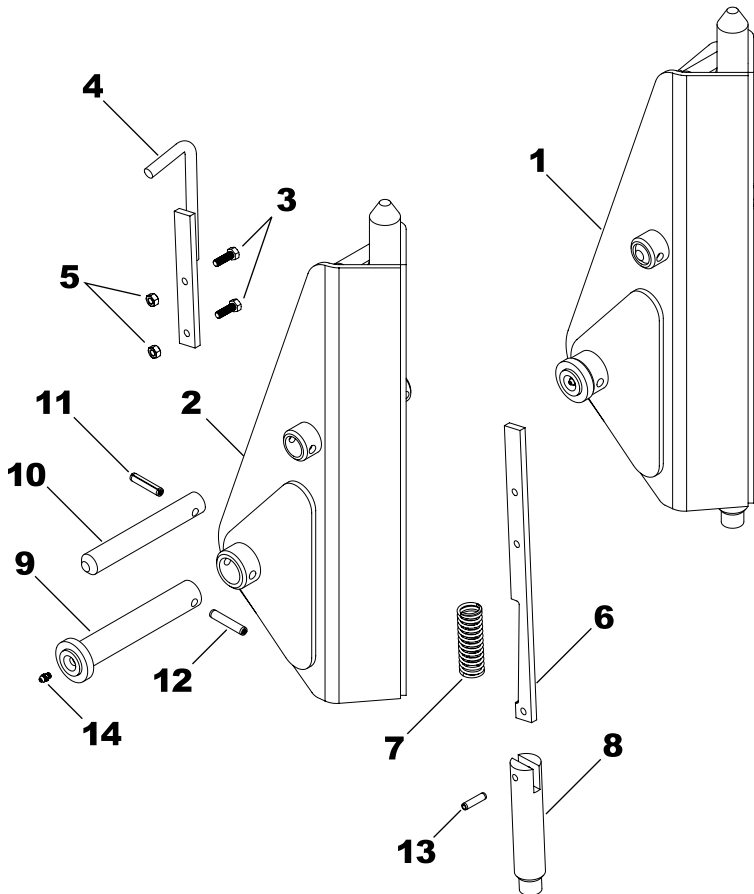
Ref.	Part No.	Description	Qty.	Ref.	Part No.	Description	Qty.
1	RCF-4AS	FRAME (ARMS ONLY)	1	11	RCF-47	GAUGE ROD	1
2	RCF-23CAS	LINKAGE ARMS	2	12	XAF-55AS	PIN	6
3	RCF-30AS-L	SELF-LEVELING PLATE (LEFT)	1	13	XAF-54C	PIN (HEADLESS)	2
4	RCF-29AS-L	SELF-LEVELING PLATE (LEFT)	1	14	RAF-26B	HEX HEAD PIN	4
5	RCF-30AS-R	SELF-LEVELING PLATE (RIGHT)	1	15	RLP0700036	ROLL PIN	2
6	RCF-29AS-R	SELF-LEVELING PLATE (RIGHT)	1	16	SR-C08	SNAP RING	4
7	RAF-15DAS	LINKAGE ASSEMBLY	2	17	CTK0200016	COTTER KEY	1
8	RCF-10AAS	OUTER LINKAGE ARM	2	18	ZER1805	GREASE ZERK	10
9	RCF-10A	INNER LINKAGE ARM	2	19	DRP0600032	DOUBLE ROLL PIN	6
10	RCF-31AS	GAUGE ROD HOLDER	1				



BUCKET

Ref.	Part No.	Description	Qty.
1	84Q216	84" BUCKET COMPLETE*	-
1	90Q225	90" BUCKET COMPLETE*	-
1	96Q229	96" BUCKET COMPLETE*	-
2	SB-14	84" - CUTTING EDGE*	-
2	LB-14	90" - CUTTING EDGE*	-
2	CB-14	96" - CUTTING EDGE*	-
3	SB-15	SIDE BLADE	2
4	C-2	RECEIVER ADAPTOR	2
5	JB-22	ATTACH GUIDE (OPTION)	2

NOTE: *Check width of the bucket and use the part number that matches. If your size is not shown, contact Westendorf Mfg. Co.



SNAP-ATTACH™ COUPLER (C-4B)

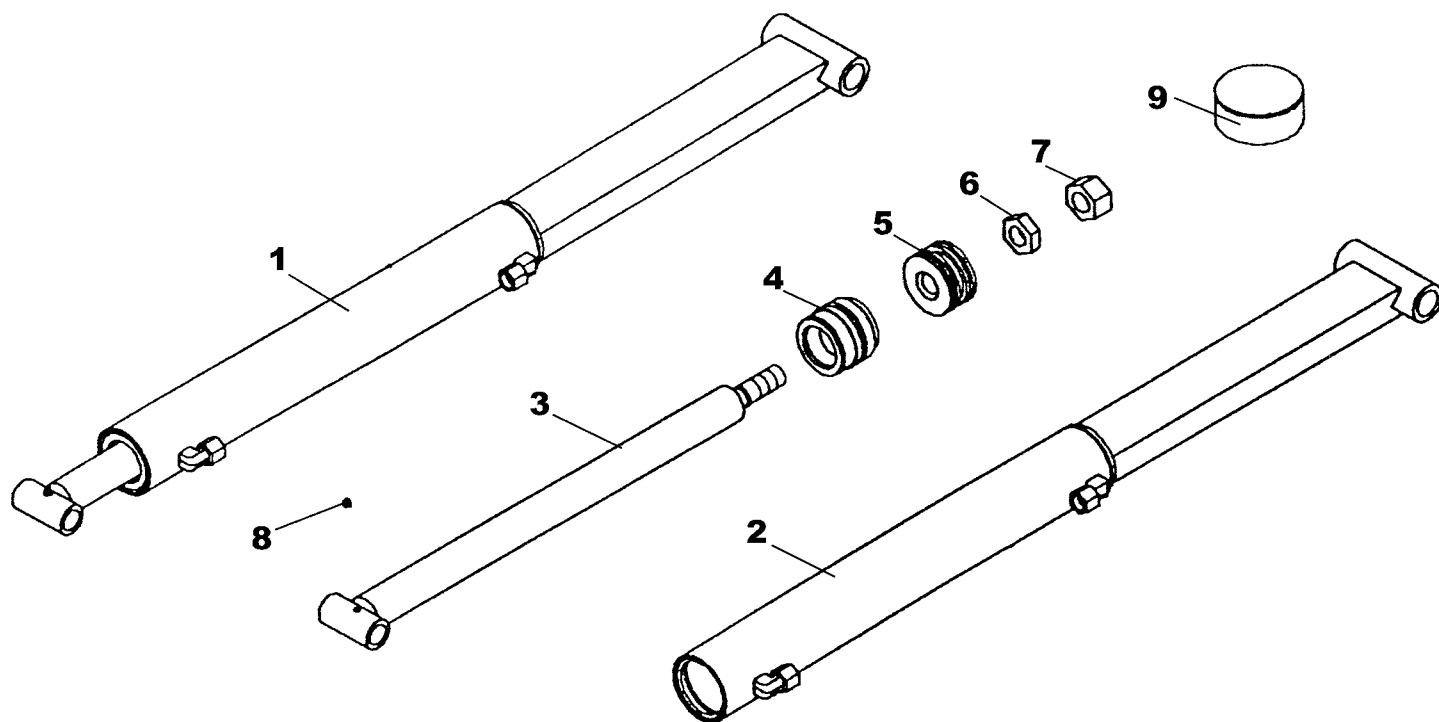
Ref.	Part No.	Description	Qty.
1	QC-1201COM	SNAP-ATTACH™ (COMPLETE)	1
2	QC-1201AS	SNAP-ATTACH™ (SHELL)	1
3	HHS0518016	5/16" x 1" BOLT	2
4	QC-7AS	HANDLE	1
5	HTN0518	5/16" LOCK NUT	2
6	QC-8	LATCH	1
7	QC-12	SPRING	1
8	QC-3	PLUNGER	1
9	XAF-55AS	1-1/4" PIN W/GREASE ZERK	1
10	LF-51A	1" PIN	1
11	DRP0600028	DOUBLE ROLL PIN	1
12	DRP0600032	DOUBLE ROLL PIN	1
13	RLP0500020	5/16" x 1-1/4" ROLL PIN	1
14	ZER1805	GREASE ZERK	1

NOTE: Qty. shows the number of parts you will receive if you place an order using these part numbers. C-4B is two (QC-1201COM).

COSMETICS

Ref.	Part No.	Description	Qty.	Ref.	Part No.	Description	Qty.
1	DEC-29	DECAL KIT	1	3	V-9524-P	PINT BLACK PAINT	1
2	V-5403-A	RED SPRAY PAINT	1	4	V-9524-Q	QUART BLACK PAINT	1
	V-9524-A	BLACK SPRAY PAINT	1	5	V-9524-G	GALLON BLACK PAINT	1

NOTE: Warning decals are available at no charge. If they become damaged or missing, order part numbers DEC-CW.



STEPS TO REPAIR CYLINDER

- 1) At the ram end of the cylinder barrel, remove the spiral retaining ring from the top of the gland.
- 2) Gently drive the gland into the barrel using a brass or non-marring punch until the round retaining ring is visible.
- 3) Remove the round retaining ring using a pair of long nose pliers. Remove the ram assembly (ram, gland, and piston) from the barrel.
- 4) Notice the direction they are pointing so they can be properly assembled.
- 5) Remove the jam nut and/or hex nut from the end of the ram.
- 6) Remove the old seals and rings and replace them with the new seals and rings. (Seal kits are packaged for several different cylinders. You may have extra parts.)
- 7) Clean the cylinder with cleaner and a clean lint free cloth.
- 8) Lubricate the seals and rings to aid assembly.
- 9) Assemble the cylinder by reversing the order.

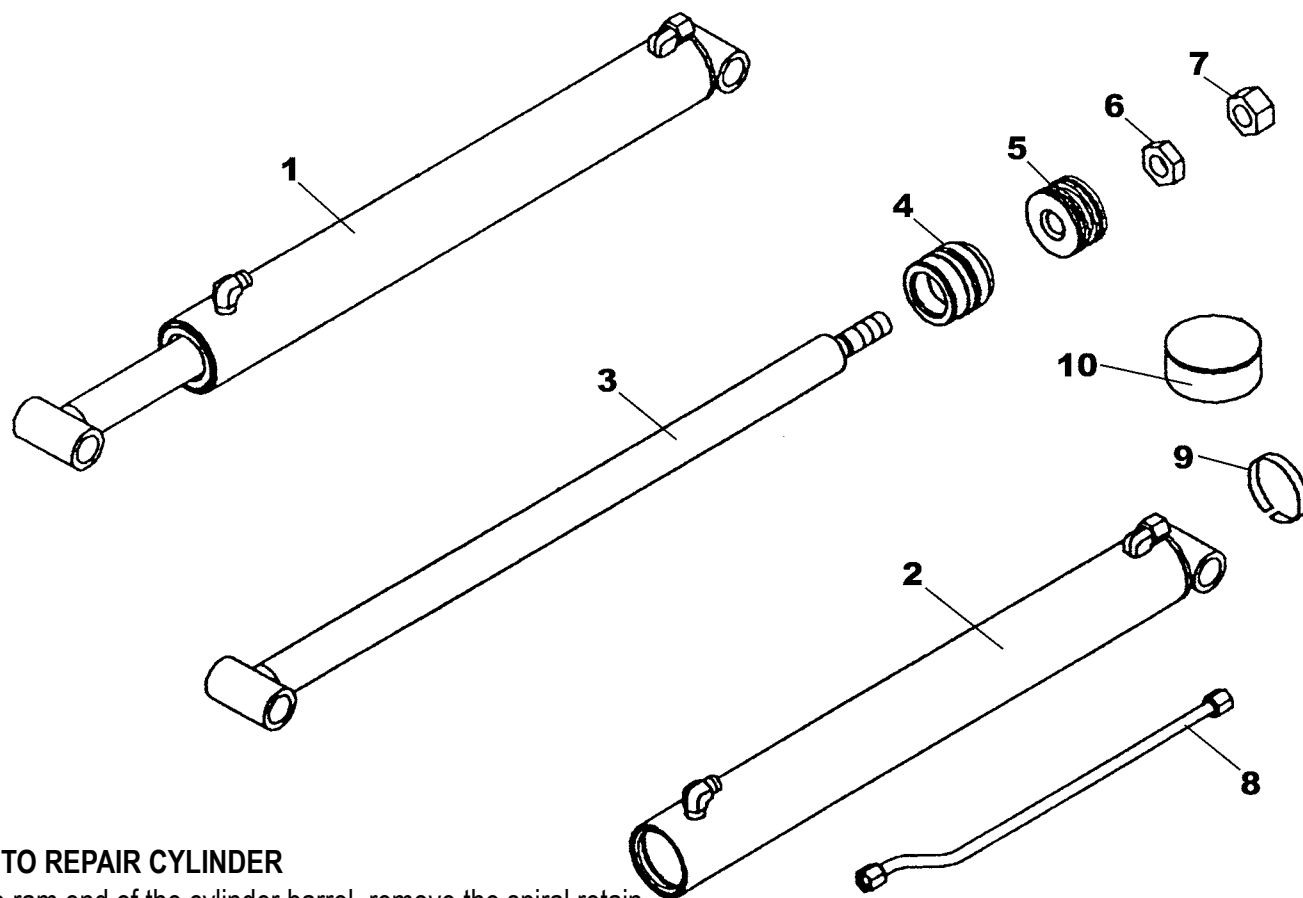
CYLINDER REPAIR TIPS

- When disassembling cylinders, keep the parts in correct orientation. Remove parts in sequence.
- Note the direction of the piston and gland. Lay out old seals and parts as they are removed.
- Assemble cylinder in the proper order; lubricate to aid assembly.

BUCKET CYLINDER REPLACEMENT PARTS

Ref.	Part No.	Description	Qty.
1	B-36A	CYLINDER (COMPLETE)	1
2	B-3601A	CYLINDER BARREL	1
3	B-3610A	CYLINDER RAM	1
4	G-L	GLAND	1
5	P-B	PISTON	1
6	HJN1614	HEX JAM NUT	1
7	HFN1614	HEX NUT	1
8	ZER1805	GREASE FITTING	1
9	#4CK	SEAL REPAIR KIT*	-

NOTE: Seal kit contains parts to repair one cylinder.



STEPS TO REPAIR CYLINDER

- 1) At the ram end of the cylinder barrel, remove the spiral retaining ring from the top of the gland.
- 2) Gently drive the gland into the barrel using a brass or non-marring punch until the round retaining ring is visible.
- 3) Remove the round retaining ring using a pair of long nose pliers. Remove the ram assembly (ram, gland, and piston) from the barrel.
- 4) Notice the direction they are pointing so they can be properly assembled.
- 5) Remove the jam nut and/or hex nut from the end of the ram.
- 6) Remove the old seals and rings and replace them with the new seals and rings. (Seal kits are packaged for several different cylinders. You may have extra parts.)
- 7) Clean the cylinder with cleaner and a clean lint free cloth.
- 8) Lubricate the seals and rings to aid assembly.
- 9) Assemble the cylinder by reversing the order.

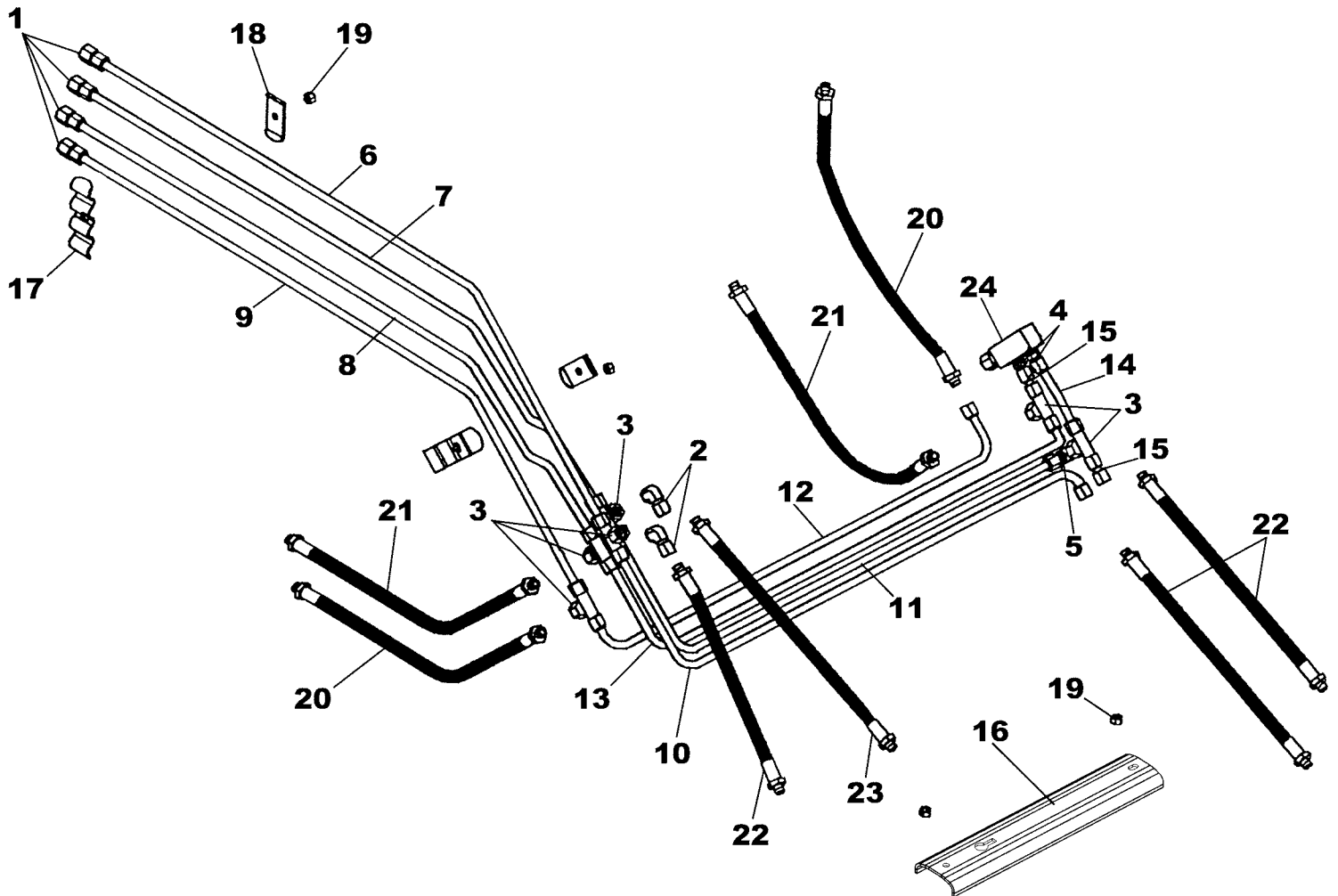
CYLINDER REPAIR TIPS

- When disassembling cylinders, keep the parts in correct orientation. Remove parts in sequence.
- Note the direction of the piston and gland. Lay out old seals and parts as they are removed.
- Assemble cylinder in the proper order; lubricate to aid assembly.

LIFT CYLINDER REPLACEMENT PARTS

Ref.	Part No.	Description	Qty.
1	L-34A	CYLINDER (COMPLETE)	1
2	L-3401A	CYLINDER BARREL	1
3	L-3410A	CYLINDER RAM	1
4	G-L	GLAND	1
5	P-B	PISTON	1
6	HFN1614	HEX NUT	1
7	HJN1614	HEX JAM NUT	1
8	OLT-440	OIL LINE	1
9	BAND12	METAL BAND	1
10	#4CK	SEAL REPAIR KIT*	-

NOTE: Seal kit contains parts to repair one cylinder.



HYDRAULIC LINES

Ref.	Part No.	Description	Qty.	Ref.	Part No.	Description	Qty.
1	PF-FFC8	FEMALE CONNECTORS	4	13	OLT-437	OIL LINE	1
2	PF-FSE8	SWIVEL ELBOW	2	14	OLT-438B	OIL LINE	1
3	PF-FSBT8	SWIVEL NUT TEE	6	15	OLT-439	OIL LINE	2
4	PF-FMC0608	MALE CONNECTOR	2	16	OH-9C	OIL LINE COVER	1
5	PF-FUE8	UNION ELBOW	1	17	OH-14A	OIL LINE HOLDER	2
6	OLT-430	OIL LINE	1	18	OH-3C	OIL LINE HOLDER	2
7	OLT-431	OIL LINE	1	19	HTN0616	3/8" LOCK NUT	4
8	OLT-432	OIL LINE	1	20	H06015FF	15" HOSE	2
9	OLT-433	OIL LINE	1	21	H06020FF	20" HOSE	2
10	OLT-434	OIL LINE	1	22	H06030FF	30" HOSE	3
11	OLT-435	OIL LINE	1	23	H06040FF	40" HOSE	1
12	OLT-436	OIL LINE	1	24	SLV-2A	RELIEF VALVE	1