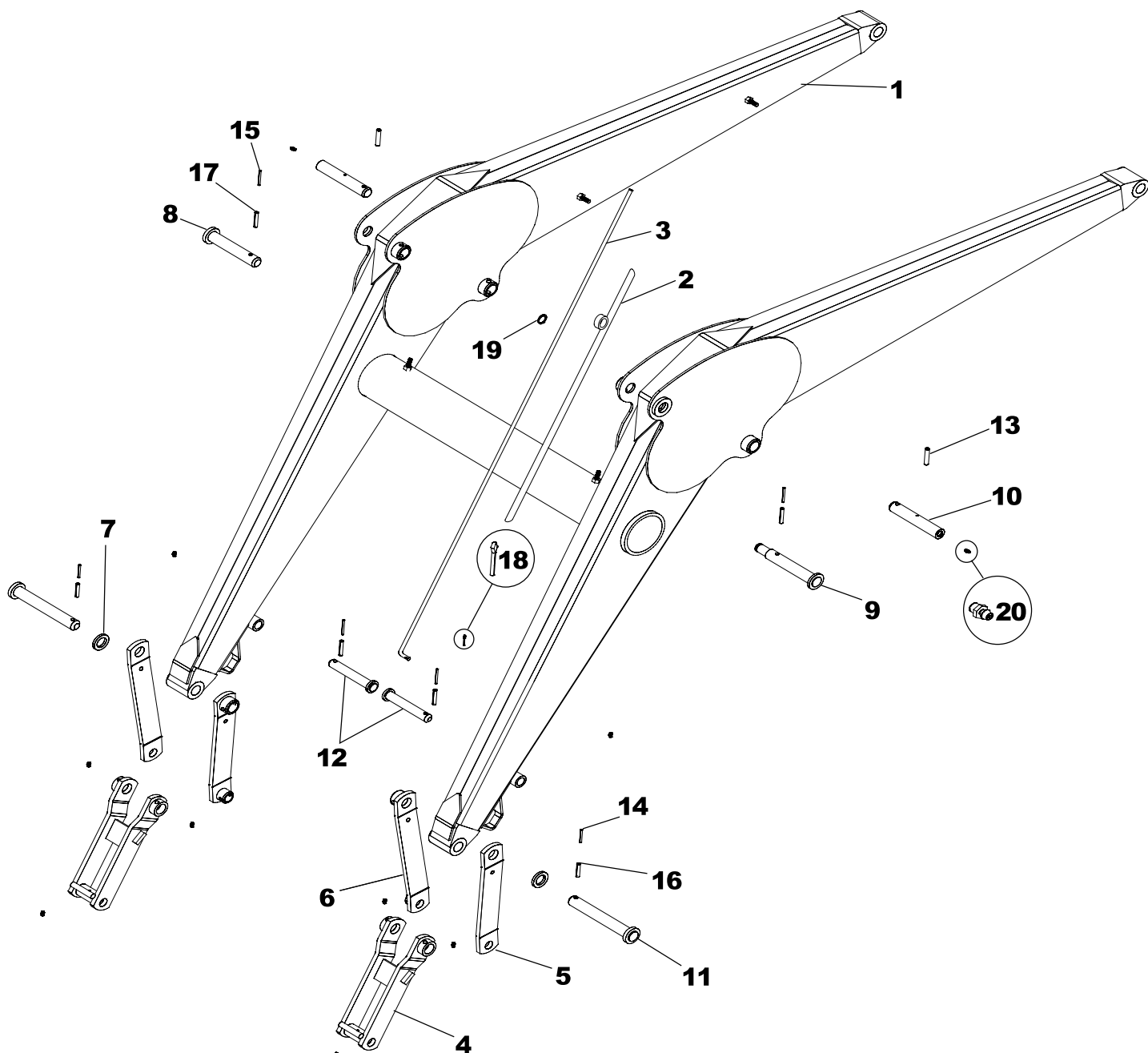


## BASIC LOADER TOWER REPLACEMENT PARTS

Ref.	Part No.	Description	Qty.	Ref.	Part No.	Description	Qty.
1	RDT-12BAS-R	TOWER (RIGHT)	1	10	NAT-126	RIVET	2
2	RDT-12BAS-L	TOWER (LEFT)	1	11	XAF-54C	PIN	4
3	RT-15FAS	LOADER SHOE ASSEMBLY	2	12	DLP0700036	DRIVE LOCK PIN	4
	NAT-120COM-R	SLIDE LOCK COMPLETE - RIGHT*	-	13	ZER1805	ZERK	4
	NAT-120COM-L	SLIDE LOCK COMPLETE - LEFT*	-	14	HHS1011080	5/8" X 4-1/2" BOLT	4
4	NAT-120BAS-R	LATCH ASSEMBLY (RIGHT)	1	15	HHS1011028	5/8" X 1 3/4" BOLT	4
5	NAT-120BAS-L	LATCH ASSEMBLY (LEFT)	1	16	CBF1011056	5/8" X 3 1/2" CARRIAGE BOLT	4
6	NAT-140	EYE BOLT	4	17	LWM10	5/8" LOCK WASHER	4
7	RLG-51	SPRING	2	18	HTN1011	5/8" LOCK NUT	12
8	NAT-106A-R	LATCH (RIGHT)	1	19	0H004E	STANDARD FRONT WRAP**	1
9	NAT-106A-L	LATCH (LEFT)	1				

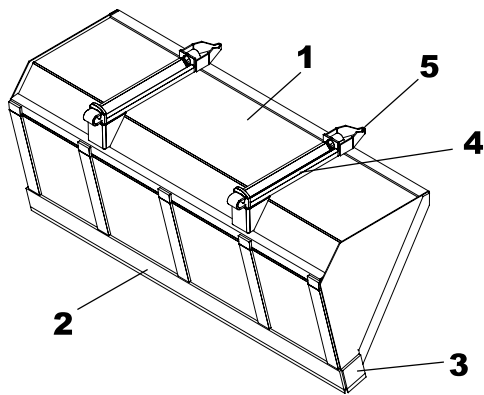
\* NAT-120COM-R contains parts 4, 6, 7, 8, 10, 16. \* NAT-120COM-L contains parts 5, 6, 7, 9, 10, 16

\*\*Varies by Tractor (Standard Wrap is 0H004E)



## BASIC LOADER ARM REPLACEMENT PARTS

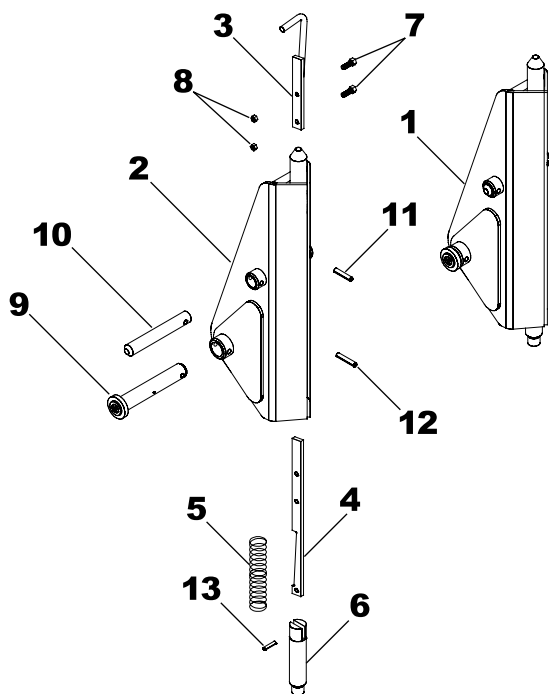
Ref.	Part No.	Description	Qty.	Ref.	Part No.	Description	Qty.
1	RDF-4AS	FRAME	1	11	LMF-125AS	PIN	2
2	RAF-66AAS	GAUGE ROD HOLDER	1	12	LMF-28AS	PIN	2
3	RCF-47	GAUGE ROD	1	13	DLP0700036	DRIVE LOCK PIN	2
4	NAF-15BAS	LINKAGE CONNECTOR	2	14	RLP0350028	7/32 X 1 3/4 ROLL PIN	2
5	NAF-10C	BUCKET PIVOT (OUTSIDE)	2	15	RLP0350032	7/32 X 2 ROLL PIN	4
6	NAF-10CAS	BUCKET PIVOT (INSIDE)	2	16	RLP0600028	3/8 X 1 3/4 ROLL PIN	2
7	NAF-117	SPACER WASHER	2	17	RLP0600032	3/8 X 2 ROLL PIN	4
8	NAF-56AAS	PIN	1	18	CTK0200016	COTTER KEY	1
9	NAF-57AAS	GAUGE ROD PIN	1	19	SR-C08	SNAP RING	1
10	XAF-54C	PIN (HEADLESS)	2	20	ZER1805	ZERK	10



**NOTE:** \*Check width of the bucket and use the part number that matches. If your size is not shown, contact Westendorf Mfg. Co.

## BUCKET

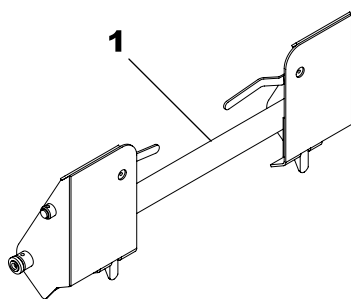
Ref.	Part No.	Description	Qty.
1	84Q216	84" BUCKET COMPLETE*	-
	90Q225	90" BUCKET COMPLETE*	-
2	SB-14	84" - CUTTING EDGE*	-
	LB-14	90" - CUTTING EDGE*	-
3	SB-15	SIDE BLADE	2
4	QC-13AAS	RECEIVER ADAPTOR	2
5	JB-22	ATTACH GUIDE (OPTION)	2



## SNAP-ATTACH™ COUPLER (C-4B)

Ref.	Part No.	Description	Qty.
1	QC-1201COM	SNAP ATTACH™ (COMPLETE)	1
2	QC-1201AS	SNAP ATTACH™ (SHELL)	1
3	QC-6AAS	HANDLE	1
4	QC-8C	LATCH	1
5	QC-12	SPRING	1
6	QC-3A	PLUNGER	1
7	HHS0518016	5/16" X 1" BOLT	2
8	HTN0518	5/16" LOCK NUT	2
9	XAF-55AS	1-1/4" GREASEABLE PIN	1
10	LF-51A	1" PIN	1
11	DRP0600028	DOUBLE ROLL PIN	1
12	DRP0600032	DOUBLE ROLL PIN	1
13	RLP0500020	5/16" X 1-1/4" ROLL PIN	1

**NOTE:** Qty. shows the number of parts you will receive if you place an order using these part numbers. C-4B is two (QC-1201COM) couplers.



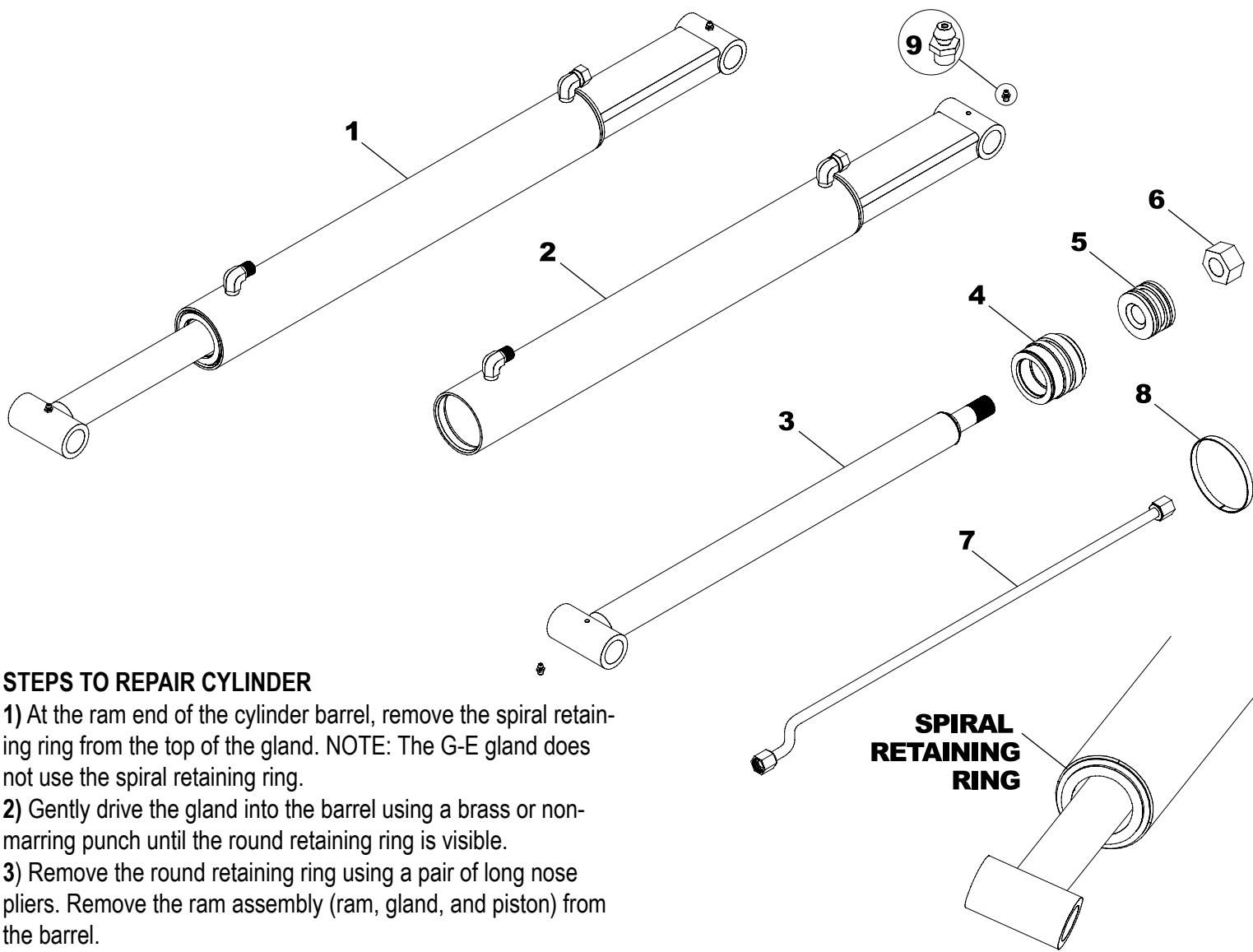
## C-30 SKID STEER COUPLER

Ref.	Part No.	Description	Qty.
1	C-30	SKID STEER COUPLER (OPTIONAL)	1

## COSMETICS

Ref.	Part No.	Description	Qty.	Ref.	Part No.	Description	Qty.
1	DEC-28 PLUS	DECAL KIT	1	4	V-5403-Q	QUART RED PAINT	1
2	V-5403-A	RED SPRAY PAINT	1		V-9524-Q	QUART BLACK PAINT	1
	V-9524-A	BLACK SPRAY PAINT	1	5	V-5403-G	GALLON RED PAINT	1
3	V-5403-P	PINT RED PAINT	1		V-9524-G	GALLON BLACK PAINT	1
	V-9524-P	PINT BLACK PAINT	1				

**NOTE:** Warning decals are available at no charge. If they become damaged or missing, order part number DEC-CW.



## STEPS TO REPAIR CYLINDER

- 1) At the ram end of the cylinder barrel, remove the spiral retaining ring from the top of the gland. NOTE: The G-E gland does not use the spiral retaining ring.
- 2) Gently drive the gland into the barrel using a brass or non-marring punch until the round retaining ring is visible.
- 3) Remove the round retaining ring using a pair of long nose pliers. Remove the ram assembly (ram, gland, and piston) from the barrel.
- 4) Notice the direction they are pointing so they can be properly assembled.
- 5) Remove the jam nut and/or hex nut from the end of the ram.
- 6) Remove the old seals and rings and replace them with the new seals and rings. (Seal kits are packaged for several different cylinders. You may have extra parts.)
- 7) Clean the cylinder with cleaner and a clean lint free cloth.
- 8) Lubricate the seals and rings to aid assembly.
- 9) Assemble the cylinder by reversing the order.

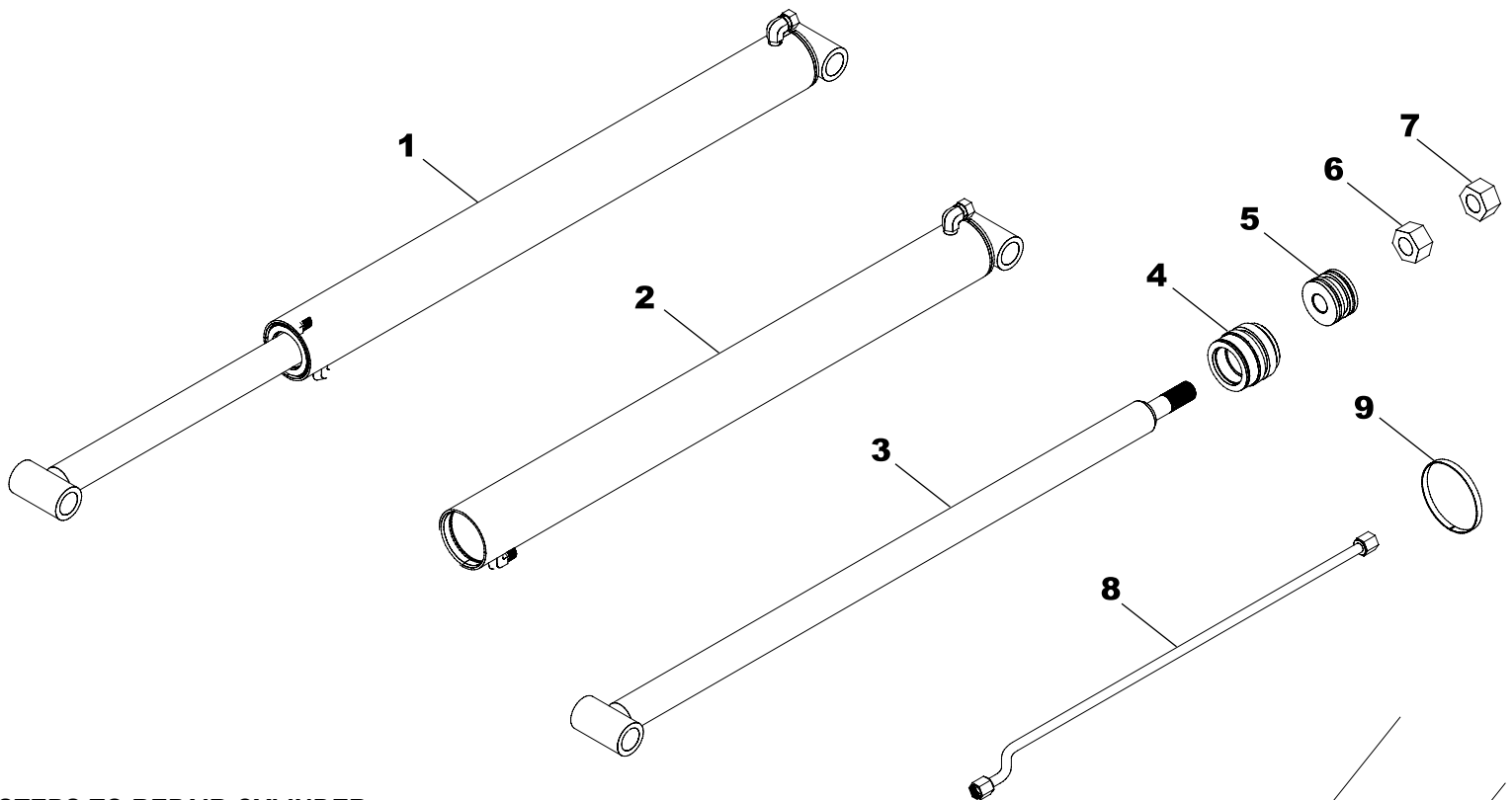
## CYLINDER REPAIR TIPS

- When disassembling cylinders keep the parts in correct orientation. Remove parts in sequence.
- Note the direction of the piston and gland. Lay out old seals and parts as they are removed.
- Assemble cylinder in the proper order, lubricate to aid assembly.

## BUCKET CYLINDER REPLACEMENT PARTS

Ref.	Part No.	Description	Qty.
1	B-24A	CYLINDER COMPLETE	1
2	B-2401A	CYLINDER BARREL	1
3	B-2410A	CYLINDER RAM	1
4	G-L	GLAND	1
5	P-B	PISTON	1
6	HFN1614	1" NUT	1
7	OLT-143A	OIL LINE	1
8	BAND-15	METAL BAND	1
9	ZER1805	ZERK	2
10	# 4CK	SEAL KIT*	1

**NOTE:** Seal kit contains parts to repair one cylinder.



## STEPS TO REPAIR CYLINDER

- 1) At the ram end of the cylinder barrel, remove the spiral retaining ring from the top of the gland. NOTE: The G-E gland does not use the spiral retaining ring.
- 2) Gently drive the gland into the barrel using a brass or non-marring punch until the round retaining ring is visible.
- 3) Remove the round retaining ring using a pair of long nose pliers. Remove the ram assembly (ram, gland, and piston) from the barrel.
- 4) Notice the direction they are pointing so they can be properly assembled.
- 5) Remove the jam nut and/or hex nut from the end of the ram.
- 6) Remove the old seals and rings and replace them with the new seals and rings. (Seal kits are packaged for several different cylinders. You may have extra parts.)
- 7) Clean the cylinder with cleaner and a clean lint free cloth.
- 8) Lubricate the seals and rings to aid assembly.
- 9) Assemble the cylinder by reversing the order.

## CYLINDER REPAIR TIPS

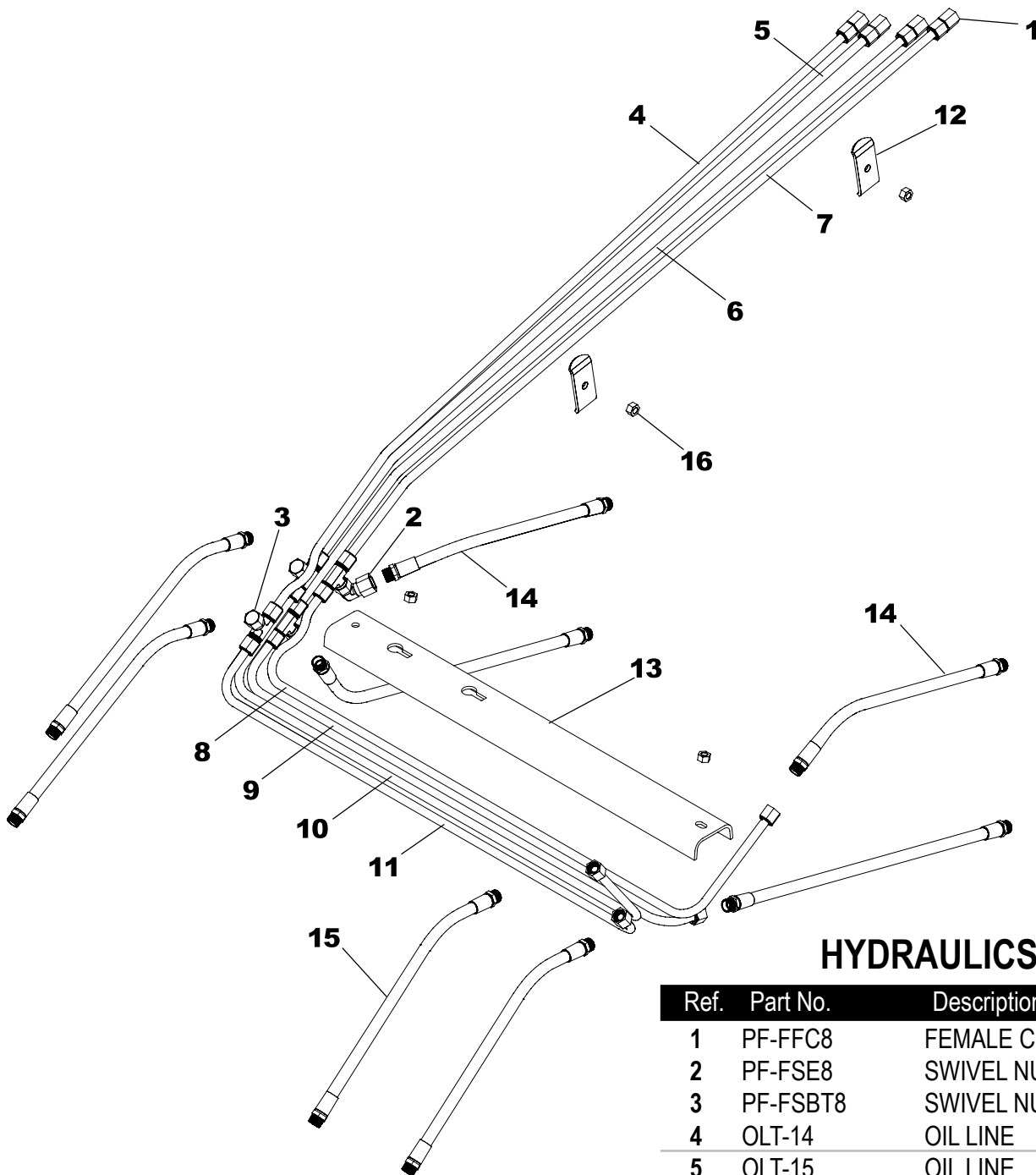
- When disassembling cylinders, keep the parts in correct orientation. Remove parts in sequence.
- Note the direction of the piston and gland. Lay out old seals and parts as they are removed.
- Assemble cylinder in the proper order; lubricate to aid assembly.

**SPIRAL  
RETAINING  
RING**

## LIFT CYLINDER REPLACEMENT PARTS

Ref.	Part No.	Description	Qty.
1	L-41	CYLINDER COMPLETE	1
2	L-4101	CYLINDER BARREL	1
3	L-4110	CYLINDER RAM	1
4	G-L	GLAND	1
5	P-B	PISTON	1
6	HFN1614	1" NUT	1
7	HJN1614	1" JAM NUT	1
8	OLT-143A	OIL LINE	1
9	BAND-15	METAL BAND	1
10	# 4CK	SEAL KIT*	1

**NOTE:** Seal kit contains parts to repair one cylinder.



## HYDRAULICS LINES

Ref.	Part No.	Description	Qty.
1	PF-FFC8	FEMALE CONNECTOR	4
2	PF-FSE8	SWIVEL NUT 90° ELBOW	1
3	PF-FSBT8	SWIVEL NUT TEE	4
4	OLT-14	OIL LINE	1
5	OLT-15	OIL LINE	1
6	OLT-16	OIL LINE	1
7	OLT-17	OIL LINE	1
8	OLT-190	OIL LINE	1
9	OLT-191	OIL LINE	1
10	OLT-192	OIL LINE	1
11	OLT-193	OIL LINE	1
12	OH-3C	OIL LINE HOLDER	2
13	OH-2	OIL LINE COVER	1
14	H06015FF	15" HOSE	2
15	H06020FF	20" HOSE	6
16	HFN0616	3/8" LOCK NUT	4