

TA-28 BASIC LOADER TOWER REPLACEMENT PARTS

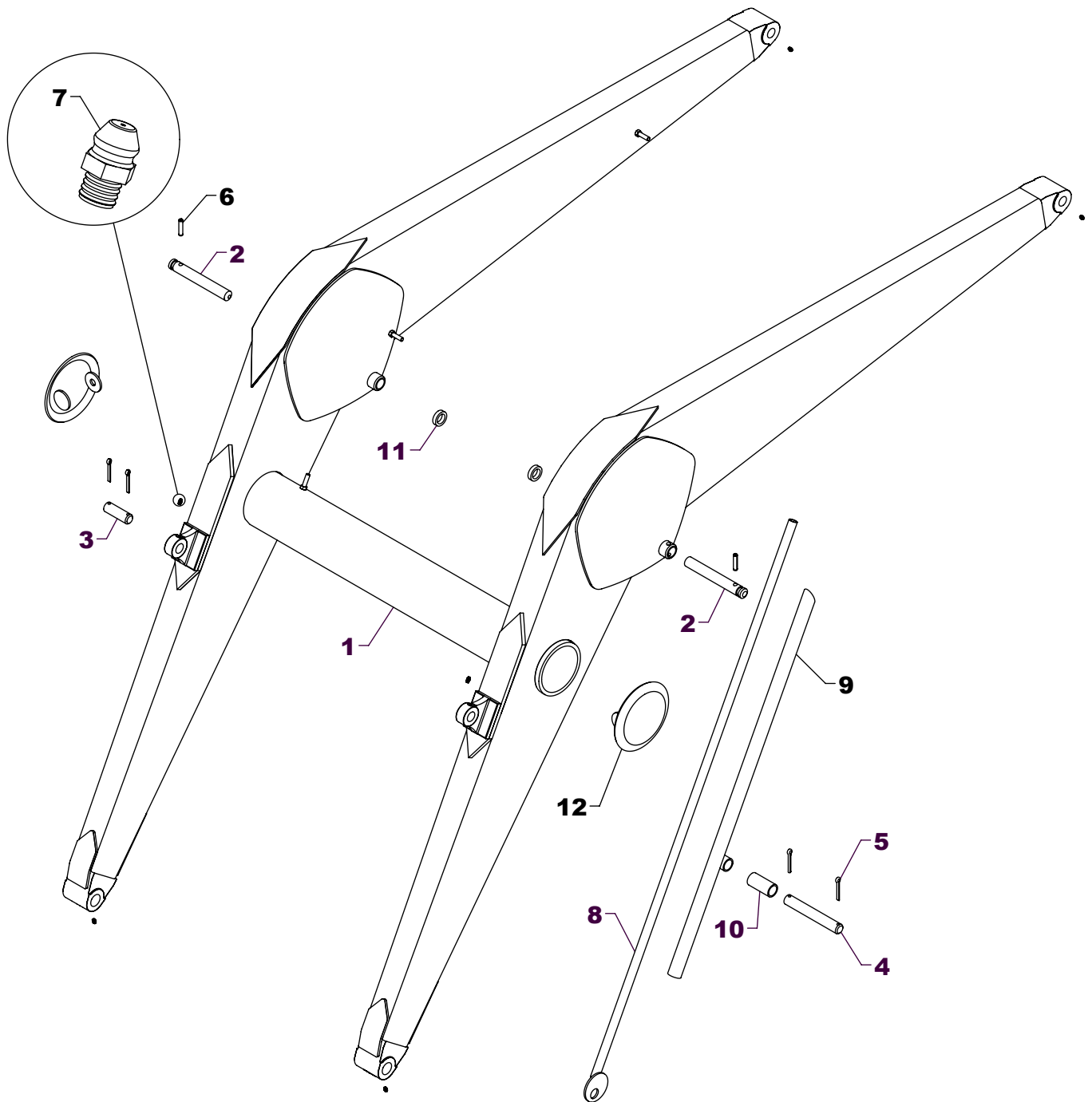
REF #	PART #	DESCRIPTION	QTY
1	RBT-12AS - L	TOWER (LEFT)	1
2	RBT-12AS - R	TOWER (RIGHT)	1
--	NAT-120COM - R	*SLIDE LOCK COMPLETE (RIGHT)	1
--	NAT-120COM - L	*SLIDE LOCK COMPLETE (LEFT)	1
3	NAT-120AS - R	SLIDE LOCK (RIGHT)	1
4	NAT-120AS - L	SLIDE LOCK (LEFT)	1
5	NAT-106 - L	DROP LOCK (LEFT)	1
6	NAT-106 - R	DROP LOCK (RIGHT)	1
7	CBF1011056	5/8" X 3 1/2" CARRIAGE BOLT	4
8	NAT-140	BAR CLAMP BOLT	4
9	HTN1011	5/8" LOCK NUT	12
10	HHS1011028	5/8" X 1 3/4" BOLT	4

REF #	PART #	DESCRIPTION	QTY
11	LWM10	5/8" LOCK WASHER	4
12	0H004	**FRONT WRAP	1
13	JT-20	PIN	4
14	DRP0600028	DOUBLE ROLL PIN	4
15	RT-15AS	SHOE	2
16	HHS1011072	5/8" X 4 1/2" BOLT	4
17	RLG-51	SPRING	2
18	NAT-126	RIVET	2
19	RAF-65	WASHER	2
20	GP-2	MANUAL CANISTER	1
21	EC-M03	SELF TAPPING SCREW	2

NOTE: *NAT-120COM - R contains parts 3(1), 6(1), 7(2), 8(2), 9(4), 17(1), 18(1). NAT-120COM - L contains parts 4(1), 5(1), 7(2), 8(2), 9(4), 17(1), 18(1). **Varies by tractor (Standard Wrap is 0H004).

WESTENDORFMFG SJG418220

WESTENDORF MFG CO., INC. • PH: (712) 423-2762 • FAX: (712) 423-1460 • sales@westendorfmfg.com • www.loaders.com



TA-28 BASIC LOADER FRAME REPLACEMENT PARTS

REF #	PART #	DESCRIPTION	QTY
1	RBF-4AS	FRAME	1
2	LF-82	LIFT PIN	2
3	LF-49	PIN	1
4	BF-59	PIN	1
5	CTK0400032	1/4" X 2" COTTER KEY	4
6	DRP0600028	DOUBLE ROLL PIN	2

REF #	PART #	DESCRIPTION	QTY
7	ZER1805	GREASE FITTING	6
8	BF-47AS	GAUGE ROD	1
9	BF-50AS	GAUGE ROD HOLDER	1
10	BF-61	GAUGE ROD SPACER	1
11	RAT-30	SPACER BUSHING	2
12	FMF-43AS	CAP	2

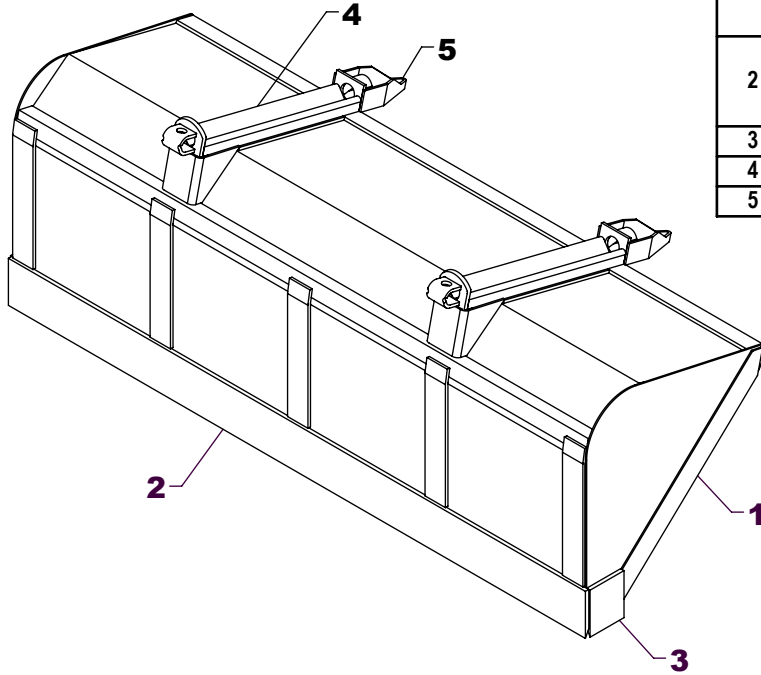
WESTENDORFMFG SJG418220

WESTENDORF MFG. CO., INC. • PH:(712) 423-2762 • FAX: (712) 423-1460 • sales@westendorfmfg.com • www.loaders.com

BUCKET

REF #	PART #	DESCRIPTION	QTY.
1	84Q216	84" BUCKET	1
	84Q225	84" BUCKET	1
	90Q225	90" BUCKET	1
	96Q229	96" BUCKET	1
2	SB-14	84" BLADE	1
	LB-14	90" BLADE	1
	CB-14	96" BLADE	1
3	SB-15	BLADE	2
4	QC-13AS	WELD ON ADAPTER	2
5	JB-22	GUIDE	2

NOTE: *Check width of the bucket and use the part number that matches. If your size is not shown, contact Westendorf Mfg. Co.



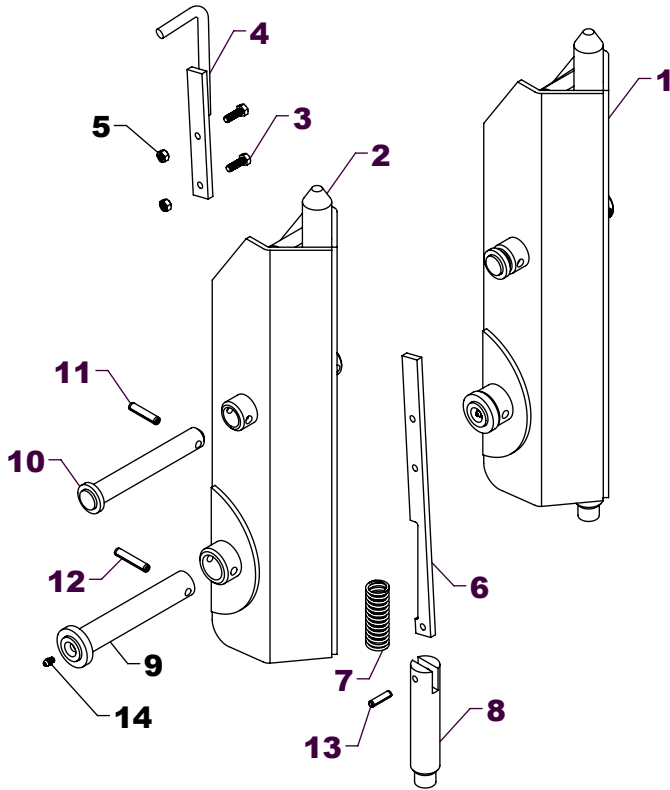
COSMETICS

REF #	PART #	DESCRIPTION	QTY.
1	DEC-28	DECAL KIT	1
2	V-5403-A	RED SPRAY PAINT	1
	V-9524-A	STONE BLACK SPRAY PAINT	1

REF #	PART #	DESCRIPTION	QTY
3	V-9524-P	PINT STONE BLACK PAINT	1
4	V-9524-Q	QUART STONE BLACK PAINT	1
5	V-9524-G	GALLON STONE BLACK PAINT	1

NOTE: Warning decals are available at no charge. If they become damaged or missing, order part numbers DEC-CW.

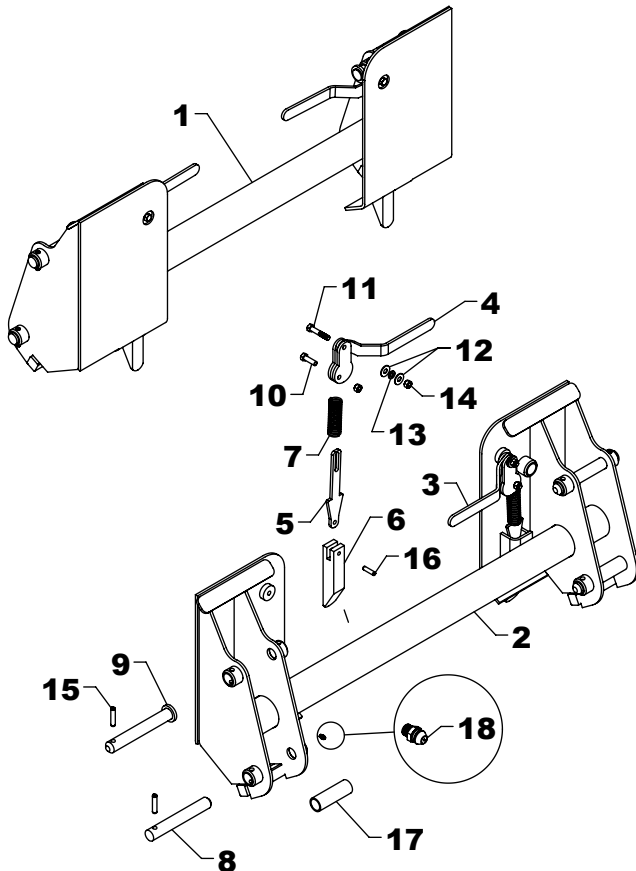
SNAP-ATTACH™ COUPLER (C-5)



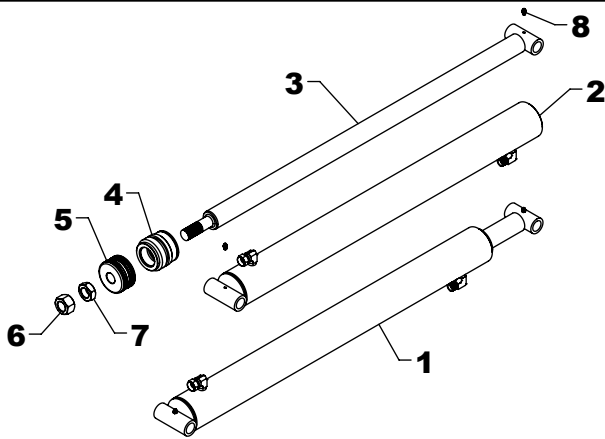
REF #	PART #	DESCRIPTION	QTY.
1	QC-501COM	MALE COUPLER COMPLETE	1
2	QC-501AS	MALE COUPLER	1
3	HHS0518016	5/16" X 1" BOLT	2
4	QC-6AS	LATCH HANDLE	1
5	HTN0518	5/16" LOCK NUT	2
6	QC-8	LATCH	1
7	QC-12	SPRING	1
8	QC-3	BOTTOM LATCH PIN	1
9	XAF-55AS	LINKAGE PIN	1
10	LMF-18AS	PIN	1
11	DRP0600028	DOUBLE ROLL PIN	1
12	DRP0600032	DOUBLE ROLL PIN	1
13	RLP0500020	5/16" X 1 1/4" ROLL PIN	1
14	ZER1805	GREASE FITTING	1

NOTE: Qty. shows the number of parts you will receive if you place an order using these part numbers.
C-5 is two (QC-501COM) couplers.

OPTIONAL SKID STEER COUPLER (C-31)



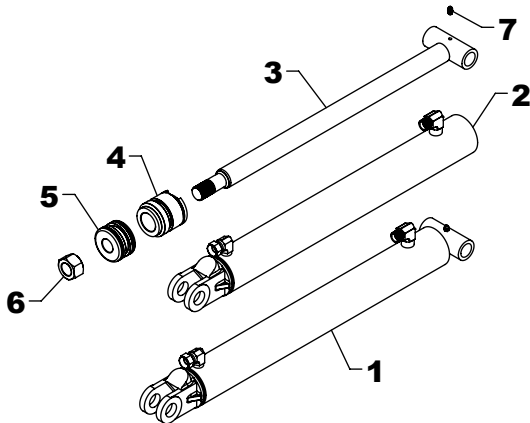
REF #	PART #	DESCRIPTION	QTY
1	C-31	SKID STEER COUPLER	1
2	QC-3100AS	COUPLER	1
3	QC-2007AS - R	HANDLE (RIGHT)	1
4	QC-2007AS - L	HANDLE (LEFT)	1
5	QC-2010	LINKAGE	2
6	QC-2011	LATCH	2
7	QC-12	SPRING	2
8	LF-51	LINKAGE PIN	3
9	LMF-18AS	PIN	1
10	HHS0616020	3/8" X 1 1/4" BOLT	2
11	HHS0616032	3/8" X 2" BOLT	2
12	FWW06	3/8" FLAT WASHER	4
13	LWM06	3/8" LOCK WASHER	2
14	HTN0616	3/8" LOCK NUT	4
15	DRP0600028	DOUBLE ROLL PIN	4
16	RLP0500020	5/16" X 1 1/4" ROLL PIN	2
17	BUS-211	1 1/4" O.D. BUSHING	2
18	ZER1805	GREASE FITTING	2



TA-28 LIFT CYLINDER REPLACEMENT PARTS

REF #	PART #	DESCRIPTION	QTY.
1	L-28	LIFT CYLINDER	1
2	L-2801	BARREL	1
3	L-2810	RAM	1
4	G-L	GLAND	1
5	P-B	PISTON	1
6	HFN1614	1" NUT	1
7	HJN1614	1" JAM NUT	1
8	ZER1805	GREASE FITTING	2
9	#4CK	REPAIR KIT	1

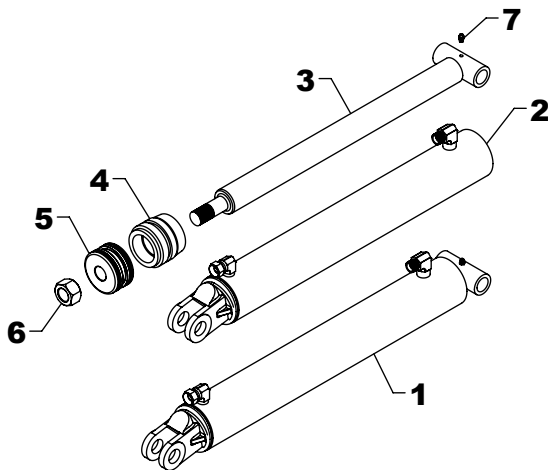
*NOTE: * Repair kit contains parts to repair one cylinder*



TA-28 STANDARD 2 1/2" BUCKET CYLINDER REPLACEMENT PARTS

REF #	PART #	DESCRIPTION	QTY.
1	B-1	CYLINDER	1
2	B-101	BARREL	1
3	B-110	RAM	1
4	G-A	GLAND	1
5	P-A	PISTON	1
6	HFN1614	1" NUT	1
7	ZER1805	GREASE FITTING	1
8	#1CK	REPAIR KIT	1

*NOTE: * Repair kit contains parts to repair one cylinder*



TA-28C OPTIONAL 3" BUCKET CYLINDER REPLACEMENT PARTS

REF #	PART #	DESCRIPTION	QTY.
1	B-4	BUCKET CYLINDER	1
2	B-401	BARREL	1
3	B-410	RAM	1
4	G-E	GLAND	1
5	P-B	PISTON	1
6	HFN1614	1" NUT	1
7	ZER1805	GREASE FITTING	1
8	#4CK	REPAIR KIT	1

*NOTE: * Repair kit contains parts to repair one cylinder*

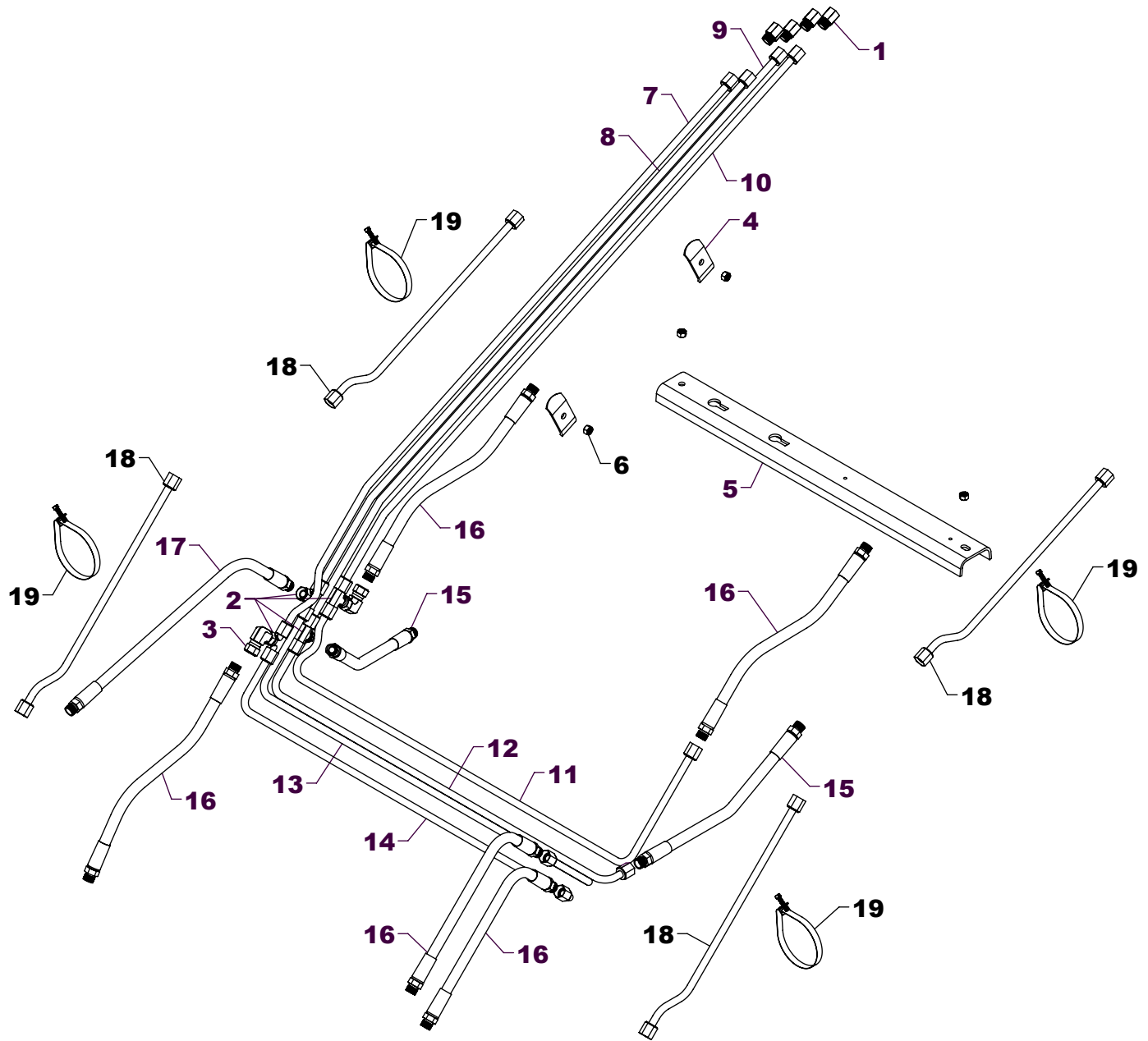
STEPS TO REPAIR CYLINDER

- 1) At the ram end of the cylinder barrel, remove the spiral retaining ring from the top of the gland.
NOTE: The G-E gland uses a round wire ring.
- 2) Gently drive the gland into the barrel using a brass or non-marring punch until the round retaining ring is visible.
- 3) Remove the round retaining ring using a pair of long nose pliers. Remove the ram assembly (ram, gland, and piston) from the barrel.
- 4) Notice the direction they're pointing so they can be properly re-assembled.
- 5) Remove the jam nut and/or hex nut from the end of the ram.

- 6) Remove the old seals and rings and replace them with the new seals and rings. (Seal kits are packaged for several different cylinders. You may have extra parts)
- 7) Clean cylinder with cleaner and a clean lint free cloth.
- 8) Lubricate the seals and rings to aid assembly.
- 9) Assemble the cylinder by reversing the order.

CYLINDER REPAIR TIPS

- When disassembling cylinders, keep the parts in correct orientation. Remove parts in sequence.
- Note the direction of the piston and gland. Lay out old seals and parts as they are removed.
- Assemble cylinder in proper order; lubricate to aid assembly.



TA-28 HYDRAULICS

REF #	PART #	DESCRIPTION	QTY.
1	PF-FFC8	FEMALE CONNECTOR	4
2	PF-FSBT8	SWIVEL NUT TEE	4
3	PF-FSE8	90° SWIVEL NUT ELBOW	2
4	OH-3	OIL LINE HOLDER	2
5	OH-2	OIL LINE PROTECTOR	1
6	HTN0616	3/8" LOCK NUT	4
7	OLT-14	OIL LINE	1
8	OLT-15	OIL LINE	1
9	OLT-16	OIL LINE	1
10	OLT-17	OIL LINE	1

REF #	PART #	DESCRIPTION	QTY.
11	OLT-190	OIL LINE	1
12	OLT-191	OIL LINE	1
13	OLT-192	OIL LINE	1
14	OLT-193	OIL LINE	1
15	H06015-FF	3/8" X 15" HOSE	2
16	H06020-FF	3/8" X 20" HOSE	5
17	H06030-FF	3/8" X 30" HOSE	1
18	OLT-143	OIL LINE	4
19	BAND-15	METAL BAND	4

WESTENDORFMFG SJG418220

WESTENDORF MFG. CO., INC. • PH: (712) 423-2762 • FAX: (712) 423-1460 • sales@westendorfmfg.com • www.loaders.com