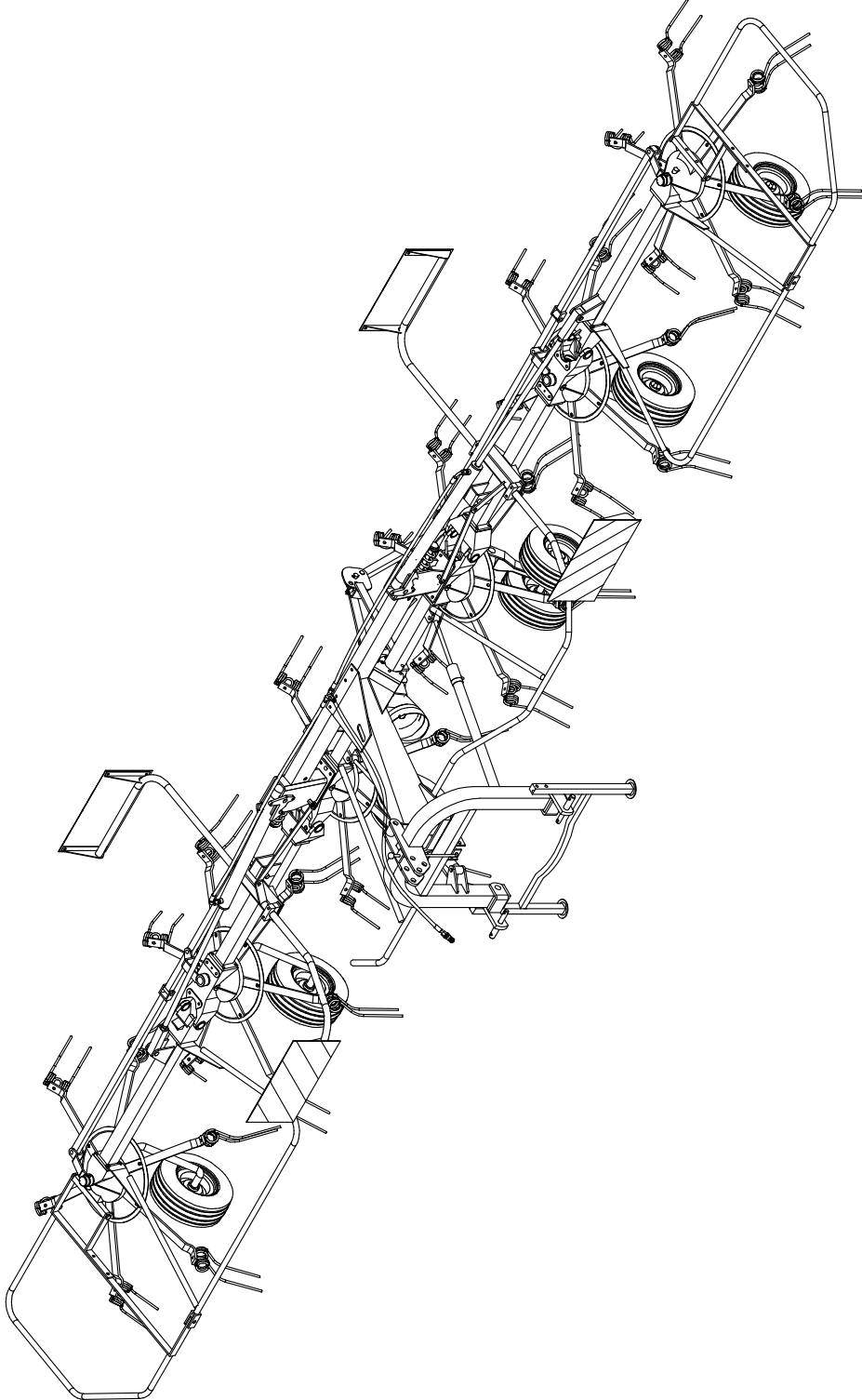




AGRICULTURAL MACHINERY

**sitrex**<sup>®</sup>  
Spa

**SPARE PARTS LIST**  
**ST 780 HM**



09/2012

TABLE NO. 920.190/a

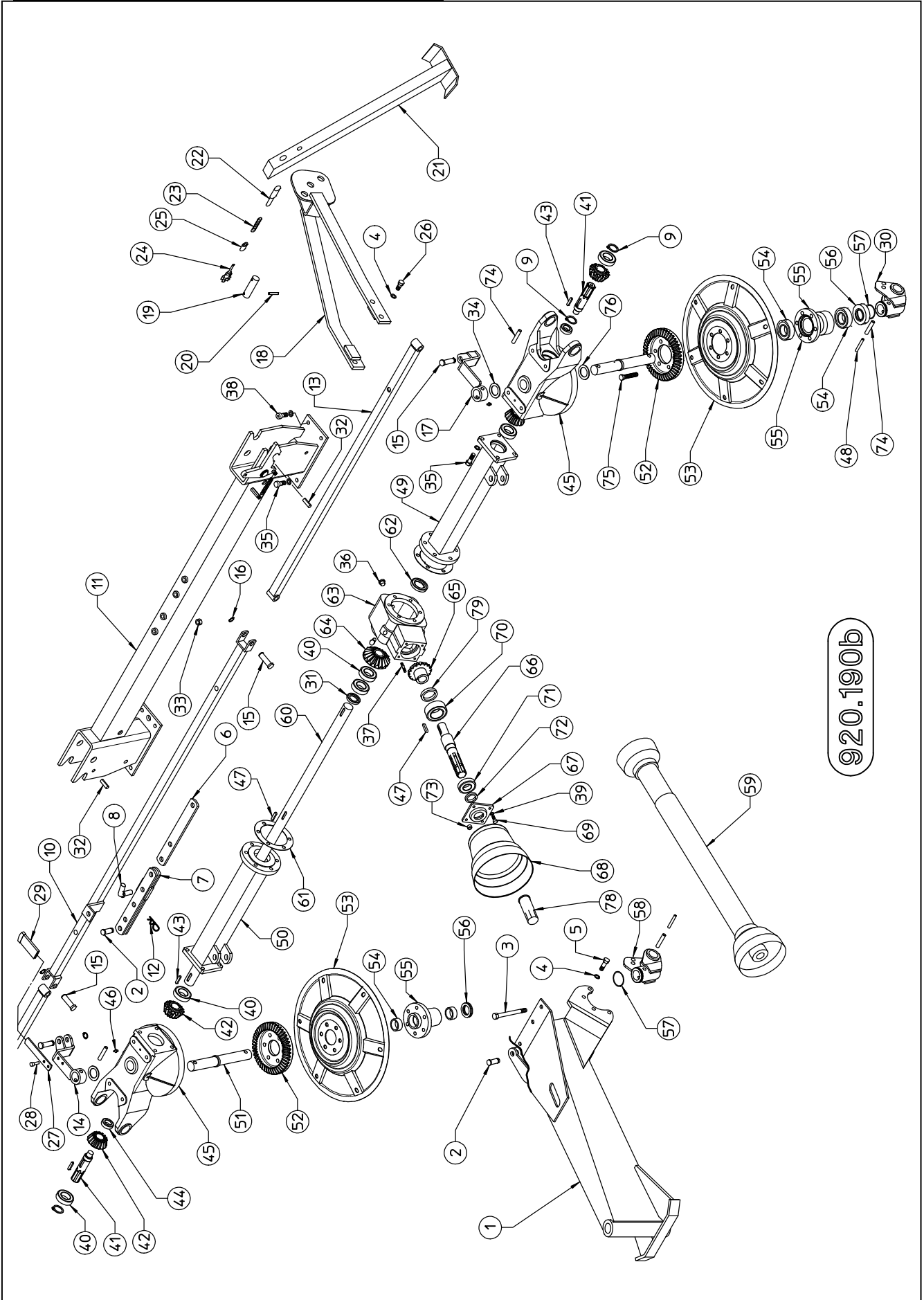
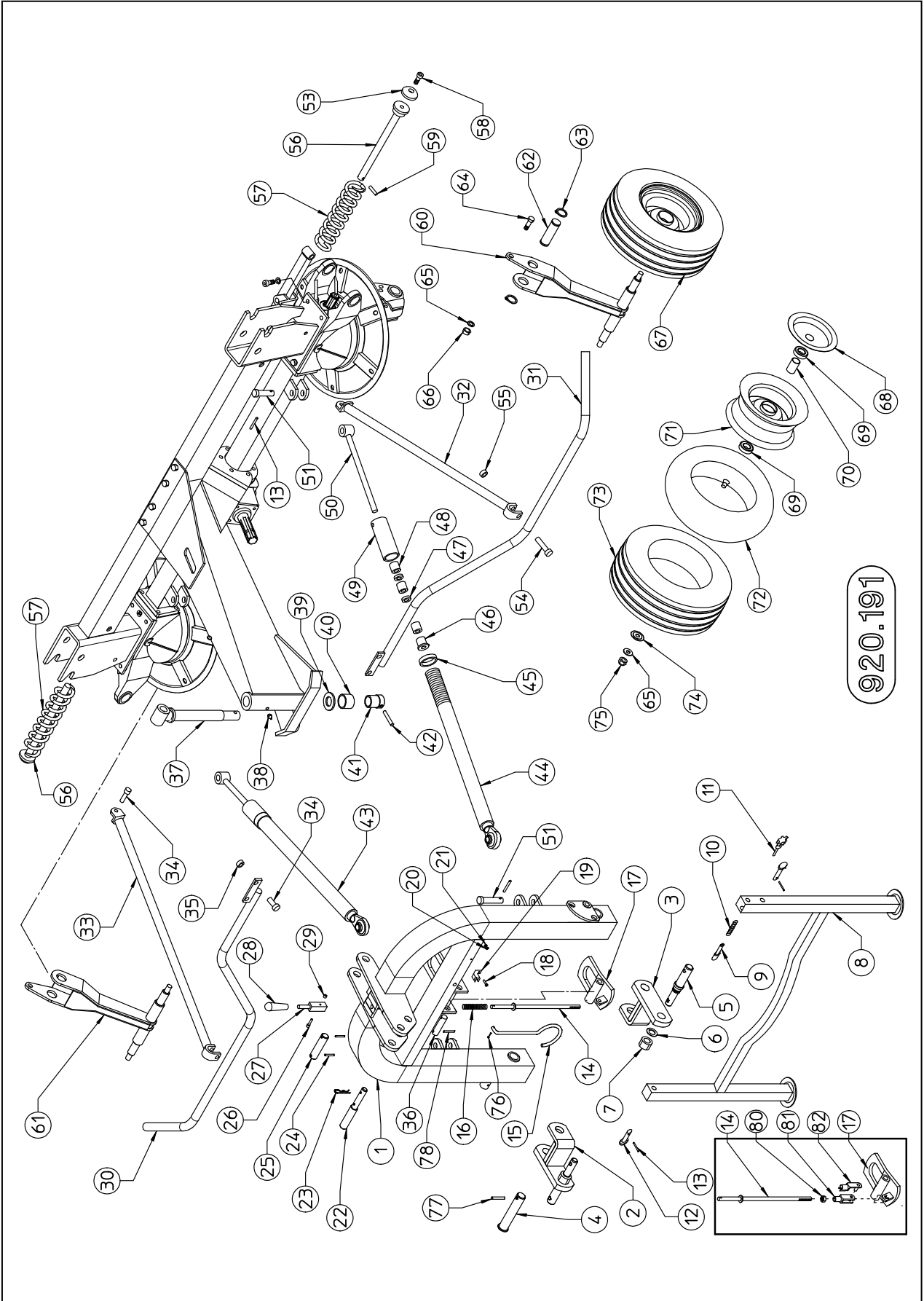


TABLE NO. 920.190/b				
ST 780 H				
ITEM	Q.ty	PART NO	DESCRIPTION	NOTE
1	1	220.051	DRAWBAR	
2	2	220.675	PIN	
3	4	600.001	SCREW M12 X 140	
4	28	600.018	WASHER D 13	
5	8	600.687	SCREW M 12 X 45	
6	1	220.298	PLATE	
7	1	220.297	TIE ROD	
8	2	220.299	PIN	
9	4	620.353	SNAP RING E29	
10	1	220.301	TIE ROD	
11	1	220.015	CROSSPIECE	
12	2	600.019	PIN	
13	2	220.302	TIE ROD	
14	1	220.681	BRACKET	
15	4	220.300	PIN	
16	6	600.533	SNAP RING E 16	
17	1	220.680	BRACKET	
18	1	220.236	FRAME	
19	1	220.241	PIN	
20	2	600.773	SPRING PIN D6 x 30	
21	1	220.235	STAND	
22	1	220.240	PIN	
23	1	220.238	SPRING	
24	1	600.592	KNOB	
25	1	220.242	BUSH	
26	4	600.753	SCREW M12X 55 DIN933	
27	1	220.674	ROD	
28	2	600.227	SCREW M10 X 20	
29	1	600.727	HANDLE	
30	1	220.384	SUPPORT L.H.	
31	1	600.582	OIL RETAINER 30/56-10	
32	2	610.809	SPRING PIN D.10X32	
33	4	600.077	NUT M12	
34	2	200.475	SHIM	
35	12	620.393	SCREW M12 X 35	
36	2	600.560	OIL CAP	
37	2	600.558	BOLT M8	
38	4	220.334	SCREW	
39	2	600.228	WASHER D 8,4	
40	6	630.834	BEARING 6206-2RS	
41	2	220.003/a	SHAFT	
42	4	220.001	PINION	
43	5	600.123	TAP 8X35	
44	2	630.838	BEARING 63004-2RS	
45	2	220.286	GEARBOX	
46	2	600.124	GREASE NIPPLE M6	
47	2	600.556	TAP 8X40	
48	4	610.871	SPRING PIN D7 X 55	
49	1	220.311	AXLE	
50	1	220.310	AXLE	
51	2	220.030	PIN	
52	2	220.753	CROWN	
53	2	220.754	TINE DISC	
54	4	630.836	BEARING 6207-2RS	
55	2	220.744	HUB	

SPARE PARTS

TABLE NO. 920.190/a				
ITEM	Q.ty	PART NO	DESCRIPTION	NOTE
56	2	220.745	BUSH	
57	2	600.568	GASKET	
58	1	220.031	SUPPORT	
59	1	620.113	CARDAN SHAFT	
60	1	220.007	DRIVE SHAFT	
61	2	200.405	GASKET	
62	1	600.561	OIL RETAINER 30/62-10	
63	1	230.269	GEARBOX	
64	1	210.999	CROWN	
65	1	210.998	PINION	
66	1	220.555	SHAFT	
67	1	200.395	GEARBOX CAP	
68	1	600.681	HOOD	
69	2	600.222	SCREW M8 X 20	
70	1	630.837	BEARING 6209	
71	1	620.041	BEARING 3207B	
72	1	600.555	OIL RETAINER 35/52 X10	
73	2	600.552	NUT M8	
74	4	610.870	SPRING PIN D12 X 55	
75	12	620.386	SCREW M12 X60	
76	2	200.490	SHIM	
77				
78	*	600.172	SHAFT GUARD	
79	1	230.244	SPACER	

TABLE NO. 920.191



## SPARE PARTS

TABLE NO. 920.191				
ST 780 H				
ITEM	Q.ty	PART NO	DESCRIPTION	NOTE
1	1	220.050	3PT HITCH	
2	1	220.684	R.H. LOWER LINK	
3	1	220.683	L.H. LOWER LINK	
4	2	210.483/a	PIN	
5	2	210.813	PIN	
6	2	600.246	WASHER D.25	
7	2	600.244	NUT M.24X2	
8	1	220.253	JACK STAND	
9	1	220.679	PIN	
10	1	220.238	SPRING	
11	1	600.592	KNOB	
12	2	220.254	PIN	
13	8	600.773	SPRIN PIN D.6X30	
14	1	220.995	TIE ROD	
15	1	200.991	CARDAN SUPPORT	
16	1	200.374	SPRING	
17	1	230.983	RATCHET	
18	1	600.833	SCREW TCI M.4X16	
19	1	200.992	CLIP	
20	1	600.839	WASHER D. 4,5	
21	1	600.836	NUT M.4	
22	1	200.343	PIN	
23	1	600.308	SPLIT PIN D 4 X 40 DIN 94 3.6	
24	2	600.538	SPRING PIN D.6X35	
25	1	210.560	PIN	
26	1	610.191	SCREW M.6X30	
27	1	220.252	HOOK	
28	1	600.830	HANDLE	
29	1	600.472	NUT M.6	
30	1	220.306	R.H. GUARD	
31	1	220.307	L.H. GUARD	
32	1	220.309	TIE ROD	
33	1	220.308	TIE ROD	
34	4	600.443	SCREW M.12X40	
35	2	600.077	NUT M.12	
36	1	220.054	PIN	
37	1	220.053	PIN	
38	1	600.124	GREASE NIPPLE M.6	
39	1	210.530	WASHER	
40	1	220.237	BUSH	
41	1	220.055	TIRE	
42	1	600.584	SPRING PIN D.10X50	
43	2	220.288	SHOCK ABSORBER ASSY	
44		220.290	TUBE	
45		610.337	NUT	
46		210.649	BUSH	
47		210.648	BUSH	
48		210.653	BUSH RUBBER	
49		210.647	NUT TUBE	
50		220.289	ROD	
51	4	210.277	PIN	

TABLE NO. 920.191				
ITEM	Q.ty	PART NO	DESCRIPTION	NOTE
53	2	220.122	PLATE	
54	2	610.783	SCREW TE M.6X45	
55	2	600.472	NUT M.6	
56	2	220.017	TIE ROD	
57	2	220.028	SPRING	
58	2	610.873	SCREW TCEI M12X35	
59	2	600.108	SPRING PIN D8X40	
60	1	230.230	L.H. SUPPORT	
61	1	230.229	R.H. SUPPORT	
62	2	220.669	PIN	
63	4	600.333	SNAP RING E35	
64	2	600.176	SCREW M16X50	
65	6	600.031	WASHER D.17	
66	2	600.080	NUT M.16 CL	
67	4	610.272	TYRE ASSY	
68		210.596	DUST COVER, INNER	
69		600.602	BEARING	
70		200.415	SPACER	
71		610.273	RIM	
72		610.274	TUBE	
73		610.275	TIRE	
74		200.416	DUST COVER, OUTER	
75	4	600.080	NUT	
76	1	600.841	SPRING PIN D.3,5 X 18	
77	2	600.027	SPRING PIN D.8X50	
78	2	600.108	SPRING PIN D.8X40	
80	1	600.132	NUT M12	
81	1	620.370	FORK M12	
82	1	620.371	CLIP ø12	

TABLE NO.920.192

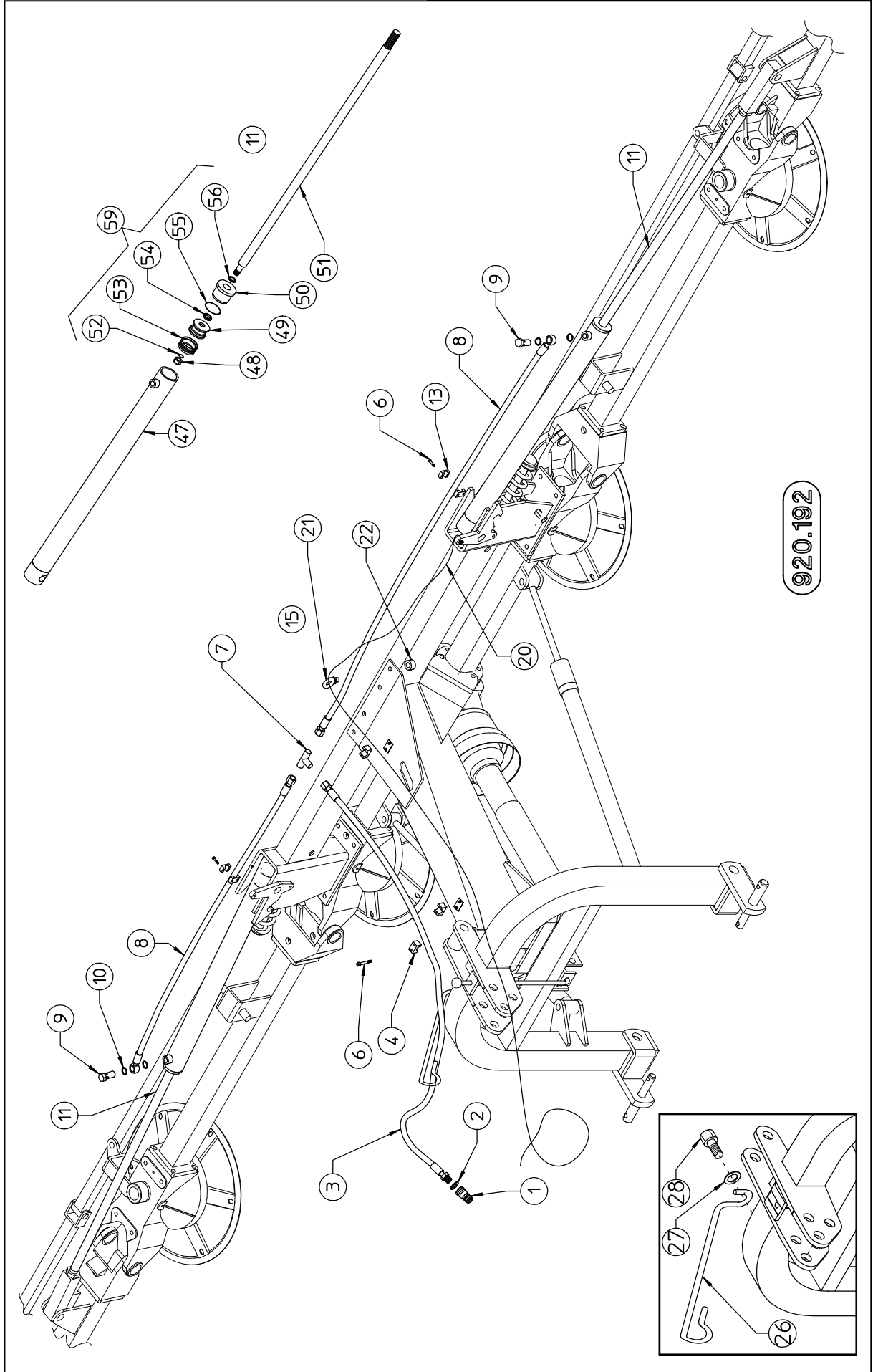




TABLE NO. 920.192				
ST 780 H				
ITEM	Q.ty	PART NO	DESCRIPTION	NOTE
1	1	600.273	RAPID COUPLING 1/2"	
2	1	600.269	COPPER WASHER 1/2"	
3	1	620.115	HOSE	
4	4	610.035	HOSE COLLAR	
6	4	610.037	SCREW TCEI 6 X 25	
7	1	600.272	FITTING	
8	2	620.116	HOSE	
9	2	600.040	FITTING	
10	4	600.039	COPPER WASHER 3/8"	
11	2	220.014	CYLINDER	
13	4	610.423	HOSE COLLAR	Ø 13
14	4	610.037	SCREW TCEI 6 X 25	
20	2	210.009	ROPE	
21	2	620.109	HOOK	
22	2	610.785	NUT M.14	
26	1	230.005	HOSE SUPPORT	
27	1	620.250	WASHER D.11/30 2,5	
28	1	600.006	SCREW M10X25	
47	2	220.386	CYLINDER PIPE	
48	2	600.642	NUT	
49	2	200.304	PISTON	
50	2	210.671	HEAD	
51	2	220.387	ROD	
52	2	600.646	GASKET	
53	2	600.648	GASKET	
54	2	610.436	GASKET	
55	2	610.090	GASKET	
56	2	610.435	GASKET	
59	1	610.397	KIT GASKET	

TABLE NO.920.193/b

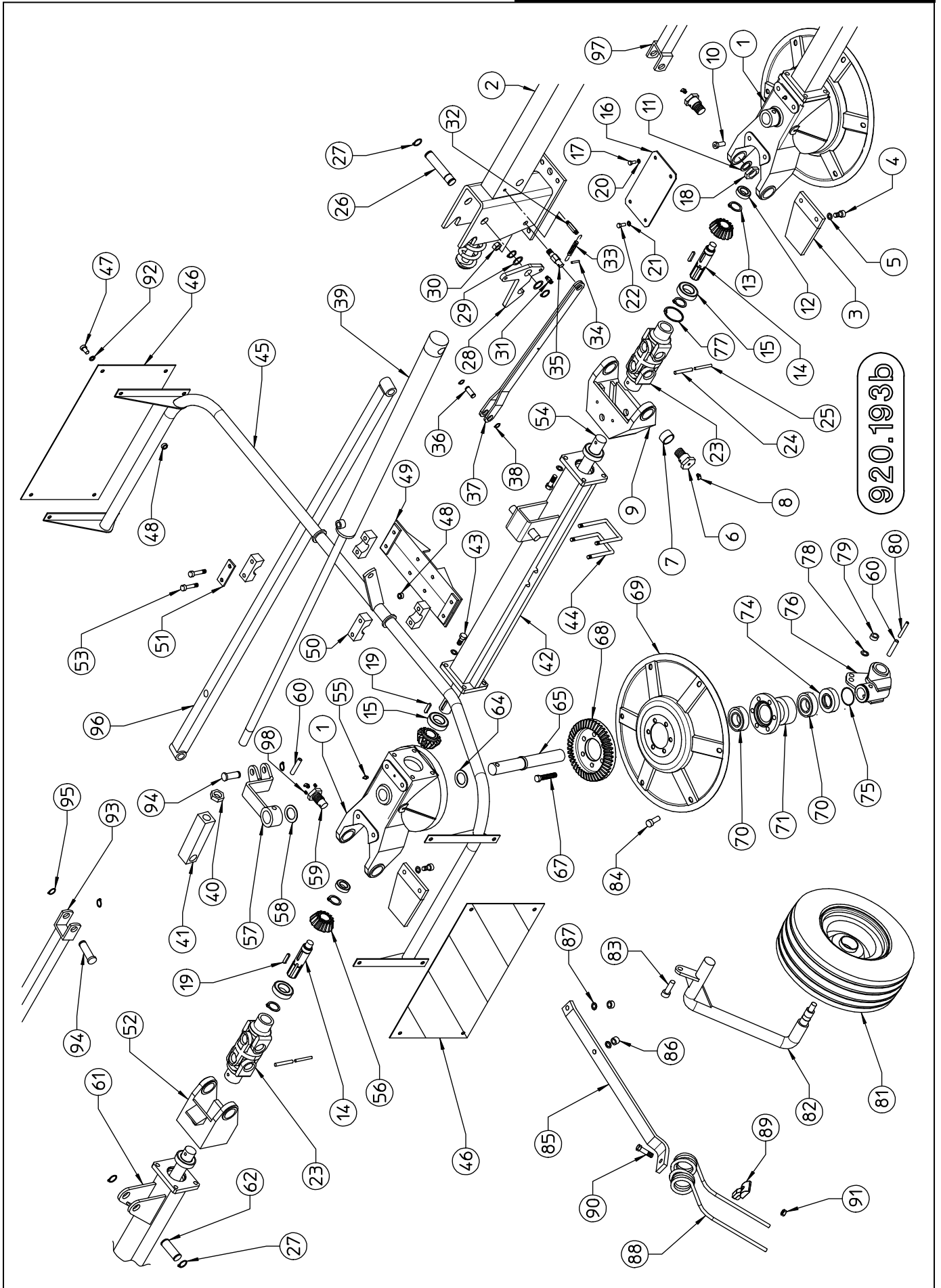
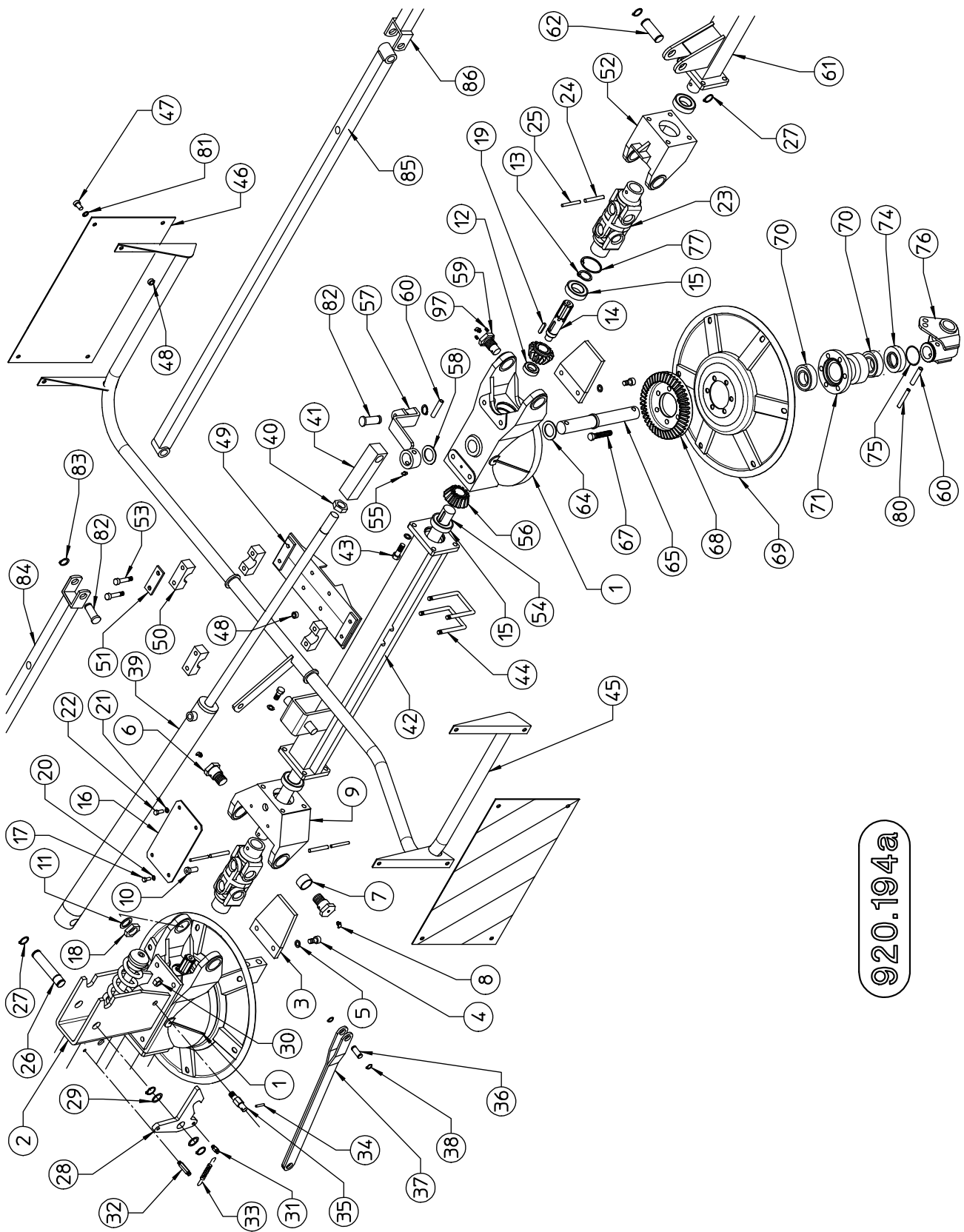


TABLE NO. 920.193/b				
ST 780 H				
ITEM	Q.ty	PART NO	DESCRIPTION	NOTE
1	1	220.286	GEARBOX	
2	1	220.015	CROSSPIECE	
3	2	220.125	PLATE	
4	4	600.004	SCREW M12X30	
5	4	600.018	WASHER D.13	
6	2	220.126	PIN	
7	2	610.147	BUSH	
8	4	610.900	GREASE NIPPLE M6X 90°	
9	1	210.994	FORK	
10	2	220.334	SCREW	
11	2	610.789	WASHER D.28	
12	2	630.838	BEARING 63004 2RS	
13	6	600.611	SNAP RING E30	
14	2	220.003	SHAFT	
15	5	630.834	BEARING 6206 2RS	
16	1	220.165	GUARD	
17	4	600.668	SCREW M6X12	
18	2	220.127	NUT	
19	3	600.123	TAP 8X35	
20	2	600.412	WASHER D. 6,6	
21	2	600.115	WASHER D. 8,4	
22	2	600.352	SCREW M 8 X 16	
23	2	200.857	JOINT	
24	2	600.541	SPRING PIN D. 10X55	
25	2	600.562	SPRING PIN D. 6X55	
26	1	220.119	PIN	
27	5	600.316	SNAP RING E25	
28	1	220.018	RATCHET	
29	2	200.668	SHIM	
30	1	600.075	NUT M14 CL	
31	1	220.159	PIN	
32	1	220.158	PIN	
33	1	220.123	SPRING	
34	1	600.580	SPRING PIN D.6 X 26	
35	1	220.139	PIN	
36	1	220.141	PIN	
37	1	220.140	TIE ROD	
38	2	600.533	SNAP RING E 16	
39	1	220.014	CYLINDER	
40	1	610.150	NUT M 24 X 2	
41	1	220.016	HEAD	
42	1	220.005	AXLE	
43	8	620.393	SCREW M12X35	
44	2	220.138	BRACKET	
45	1	220.135	LIGHTING BRACKET	
46	1	610.725	TACKS REFLECTOR	
47	8	600.227	SCREW M10 X 20	
48	12	600.029	NUT M10	
49	1	220.137	SUPPORT	
50	4	610.538	HOSE COLLAR	
51	2	610.539	PLATE	
52	1	210.995	FORK	
53	4	610.540	SCREW	
54	1	220.008	SHAFT	
55	1	600.124	GREASE NIPPLE M6	
56	3	220.001	PINION	

SPARE PARTS

TABLE NO. 920.193/b				
ITEM	Q.ty	PART NO	DESCRIPTION	NOTE
57	1	220.295	BRACKET	
58	1	200.475	SHIM	
59	2	220.128	PIN	
60	1	610.870	SPRING PIN D. 12 X 55	
61	1	220.006	AXLE	
62	1	220.120	PIN	
63				
64	1	200.490	SHIM	
65	1	220.030	PIN	
66				
67	6	620.386	SCREW M12 X60	
68	1	220.753	CROWN	
69	1	220.754	TINE DISC	
70	2	630.836	BEARING 6207-2RS	
71	1	220.744	HUB	
72				
73	6	620.441	NUT M 14	
74	1	220.745	BUSH	
75	1	600.568	GASKET	
76	1	220.031	SUPPORT R.H.	
77	2	600.612	SNAP RING I 62	
78	1	600.031	WASHER D. 17	
79	1	600.080	NUT M 16 CL	
80	1	610.871	SPRING PIN D. 7 X 55	
81	1	610.272	TIRE ASSY	
82	2	220.032	TIRE BRACKET	
83	1	600.176	SCREW M16 X 50	
84	6	630.839	SCREW M12 X 35	
85	6	230.137	TINE ARM	
86	12	620.355	NUT M12 CL	
87	12	600.018	WASHER D. 13	
88	6	220.100	TINE	
89	6	230.138	TINE LOCK	
90	6	620.405	SCREW M14 X 60	
91				
92	8	600.322	WASHER D.11	
93	1	220.303	TIE ROD	
94	3	220.300	PIN	
95	3	600.533	SNAP RING E.16	
96	1	200.302	TIE ROD	
97	1	220.301	TIE ROD	

TABLE NO. 920.194/a



920.194a

SPARE PARTS

TABLE NO. 920.194/a				
ST 780 H				
ITEM	Q.ty	PART NO	DESCRIPTION	NOTE
1	1	220.286	GEARBOX	
2	1	220.015	CROSSPIECE	
3	2	220.125	PLATE	
4	4	600.004	SCREW M12X30	
5	4	600.018	WASHER D.13	
6	2	220.126	PIN	
7	2	610.147	BUSH	
8	4	610.900	GREASE NIPPLE M6X 90°	
9	1	210.994	FORK	
10	2	220.334	SCREW	
11	2	610.789	WASHER D.28	
12	2	630.838	BEARING 63004 2RS	
13	6	600.611	SNAP RING E30	
14	2	220.003	SHAFT	
15	5	630.834	BEARING 6206 2RS	
16	1	220.165	GUARD	
17	4	600.668	SCREW M6X12	
18	2	220.127	NUT	
19	3	600.123	TAP 8X35	
20	2	600.412	WASHER D. 6,6	
21	2	600.115	WASHER D. 8,4	
22	2	600.352	SCREW M 8 X 16	
23	2	200.857	JOINT	
24	2	600.541	SPRING PIN D. 10X55	
25	2	600.562	SPRING PIN D. 6X55	
26	1	220.119	PIN	
27	5	600.316	SNAP RING E25	
28	1	220.018	RATCHET	
29	2	200.668	SHIM	
30	1	600.075	NUT M14 CL	
31	1	220.159	PIN	
32	1	220.158	PIN	
33	1	220.123	SPRING	
34	1	600.580	SPRING PIN D.6 X 26	
35	1	220.139	PIN	
36	1	220.141	PIN	
37	1	220.140	TIE ROD	
38	2	600.533	SNAP RING E 16	
39	1	220.014	CYLINDER	
40	1	610.150	NUT M 24 X 2	
41	1	220.016	HEAD	
42	1	220.005	AXLE	
43	8	620.393	SCREW M12X35	
44	2	220.138	BRACKET	
45	1	220.136	LIGHTING BRACKET	
46	1	610.725	TACKS REFLECTOR	
47	8	600.227	SCREW M10 X 20	
48	12	600.029	NUT M10	
49	1	220.137	SUPPORT	
50	4	610.538	HOSE COLLAR	
51	2	610.539	PLATE	
52	1	210.995	FORK	
53	4	610.540	SCREW	
54	1	220.008	SHAFT	
55	1	600.124	GREASE NIPPLE M6	

TABLE NO. 920.194				
ITEM	Q.ty	PART NO	DESCRIPTION	NOTE
56	3	220.001	PINION	
57	1	220.312	BUSH	
58	1	200.475	SHIM	
59	2	220.128	PIN	
60	1	610.870	SPRING PIN D. 12 X 55	
61	1	220.006	AXLE	
62	1	220.120	PIN	
64	1	200.490	SHIM	
65	1	220.030	PIN	
66				
67	6	620.386	SCREW M12 X60	
68	1	220.753	CROWN	
69	1	220.754	TINE DISC	
70	2	630.836	BEARING 6207-2RS	
71	1	220.744	HUB	
72	1			
74	1	220.745	BUSH	
75	1	600.568	GASKET	
76	1	220.384	SUPPORT L.H.	
77	2	600.612	SNAP RING I 62	
80	1	610.871	SPRING PIN D. 7 X 55	
81	8	600.322	WASHER D.11	
82	3	220.300	PIN	
83	3	600.533	SNAP RING E.16	
84	1	220.301	TIE ROD	
85	1	220.302	TIE ROD	
86	1	220.303	TIE ROD	
97	4	600.583	SCREW M8x10	

TABLE NO. 920.195/a

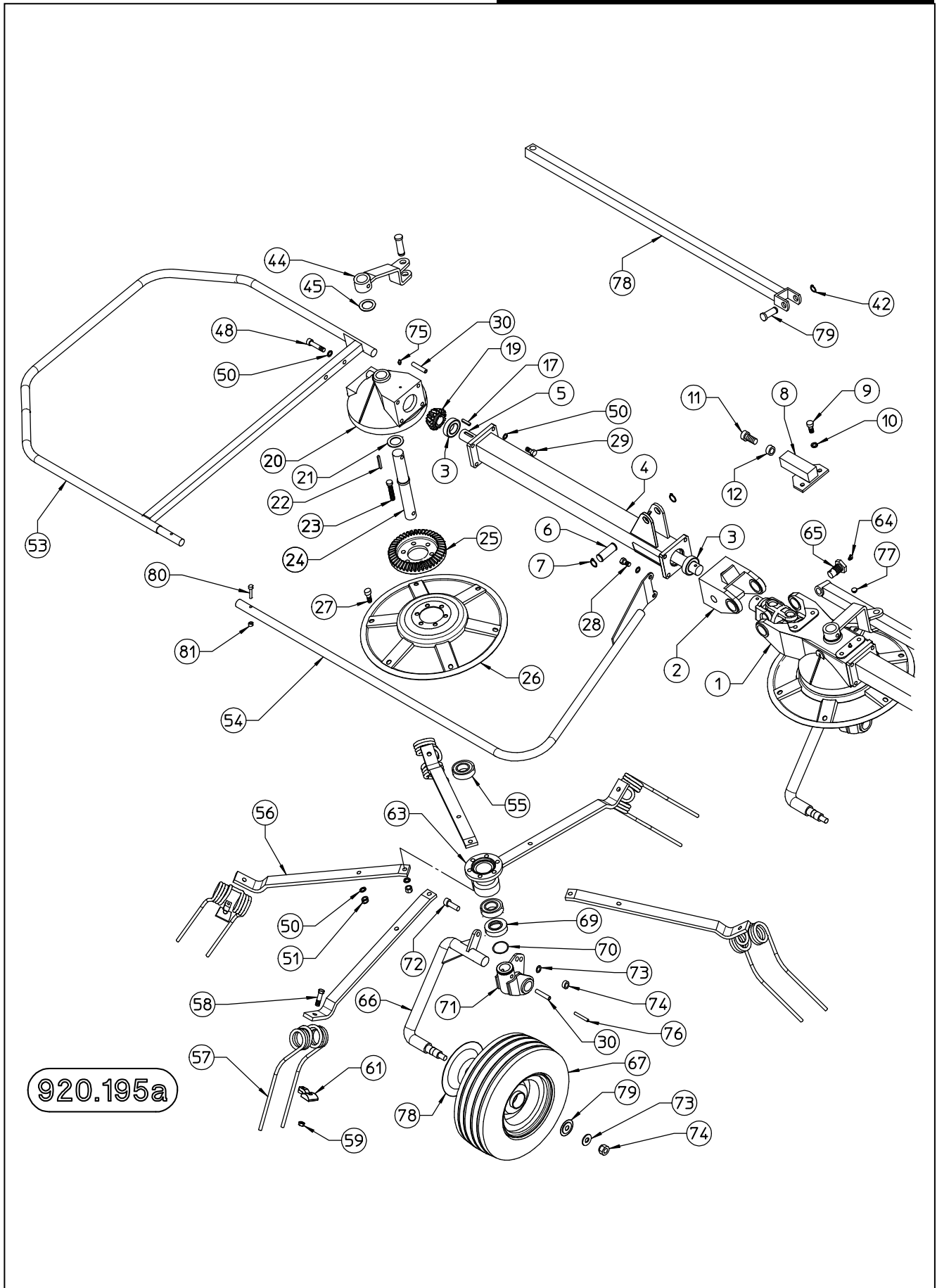


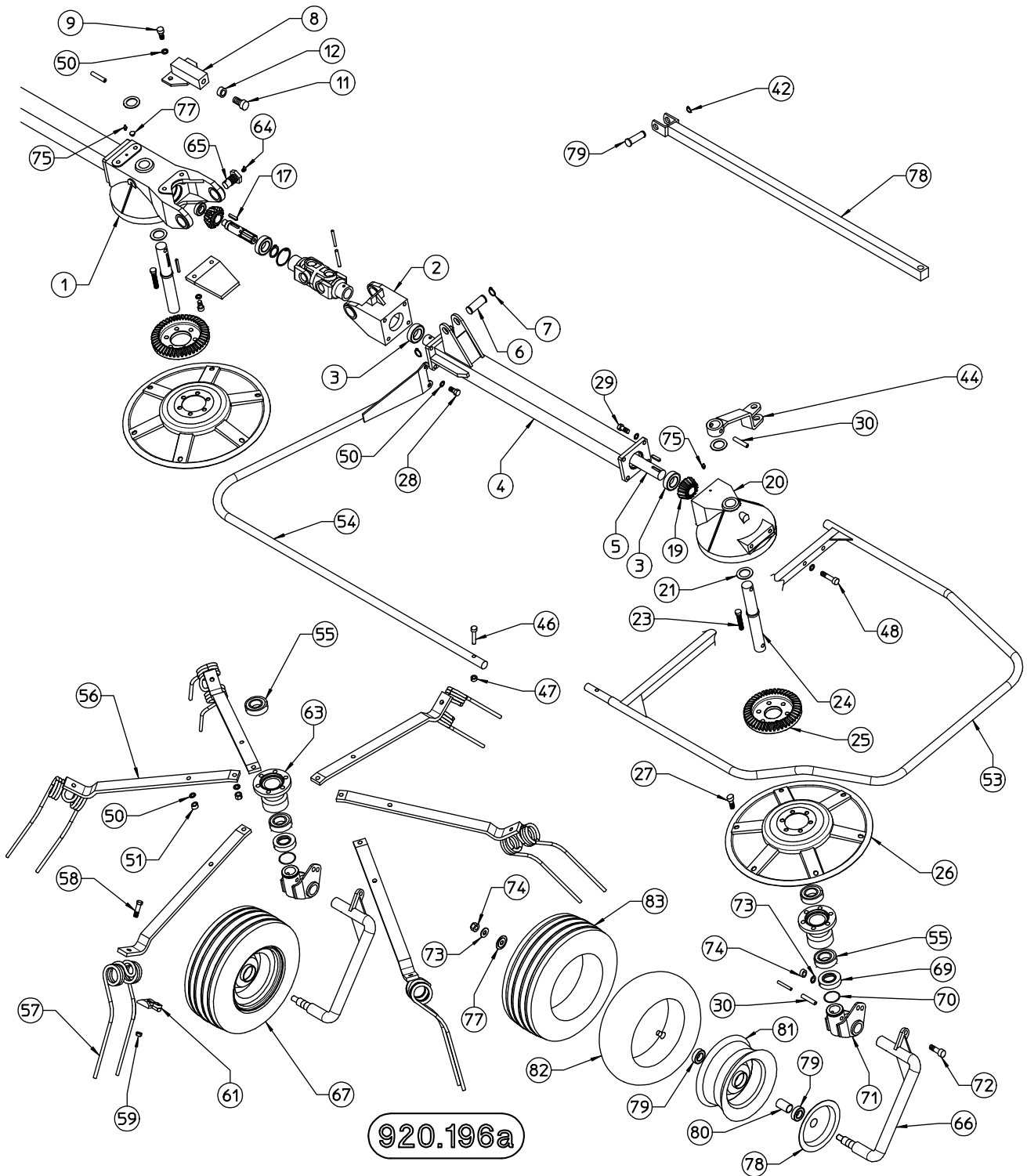


TABLE NO. 920.195/a				
ST 780 H				
ITEM	Q.ty	PART NO	DESCRIPTION	NOTE
1	1	220.286	GEARBOX	
2	1	210.995	FORK	
3	2	630.834	BEARING 6206 2RS	
4	1	220.006	AXLE	
5	1	220.008	SHAFT	
6	1	220.120	PIN	
7	2	600.316	SNAP RING D. 25	
8	1	230.142	SUPPORT R.H.	
9	2	600.004	SCREW M 12 X 30	
10	2	600.018	WASHER D. 13	
11	1	230.147	SCREW M20X50	
12	1	600.257	NUT M 20	
13				
14				
15				
16				
17	1	600.123	CAP 8 X 35	
18				
19	1	220.001	PINION	
20	1	220.287	GEARBOX	
21	1	200.490	SHIM	
22				
23	6	620.386	SCREW	
24	1	220.030	PIN	
25	1	220.753	CROWN	
26	1	220.754	TINE DISC	
27	6	630.839	SCREW M12 X 35	
28	2	600.442	SCREW M 12 X 40	
29	6	620.393	SCREW M 12 X 35	
30	1	610.870	SPRING PIN D 12 X 55	
31				
32				
33				
34				
35				
36				
37				
38				
39				
40				
41				
42	1	600.533	SNAP RING D.16	
43				
44	1	230.213	BUSH	
45	1	200.475	SHIM	
46				
47				
48	2	600.750	SCREW M12 X 50	
49				
50	14	600.018	WASHER D. 13	
51	12	620.355	NUT M12	
52				
53	1	230.157	R.H. GUARD	
54	1	230.159	R.H. GUARD	

SPARE PARTS

TABLE NO. 920.195/a				
ITEM	Q.ty	PART NO	DESCRIPTION	NOTE
55	2	630.836	BEARING 6207-2RS	
56	6	230.137	TINE ARM	
57	6	220.100	TINE	
58	6	620.405	SCREW M14 X 60	
59	6	620.441	NUT M14	
60				
61	6	230.138	TINE LOCK	
62				
63	1	220.744	HUB	
64	2	610.900	GREASE NIPPLE M6 X 90°	
65	2	220.128	PIN	
66	1	220.032	TIRE BRACKET	
67	1	610.272	TIRE ASSY	
68				
69	1	220.745	BUSH	
70	1	600.568	GASKET	
71	1	220.031	SUPPORT R.H.	
72	1	600.176	SCREW M16 X 50	
73	1	600.031	WASHER D. 17	
74	1	600.080	NUT M16	
75	1	600.124	GREASE NIPPLE M6	
76	1	610.871	SPRING PIN D. 7X55	
77	2	600.896	PLUG	
78	1	220.303	TIE ROD	
79	2	220.300	PIN	
80	1	600.063	SCREW M10x45	
81	1	600.029	NUT M10	

TABLE NO. 920.196/a

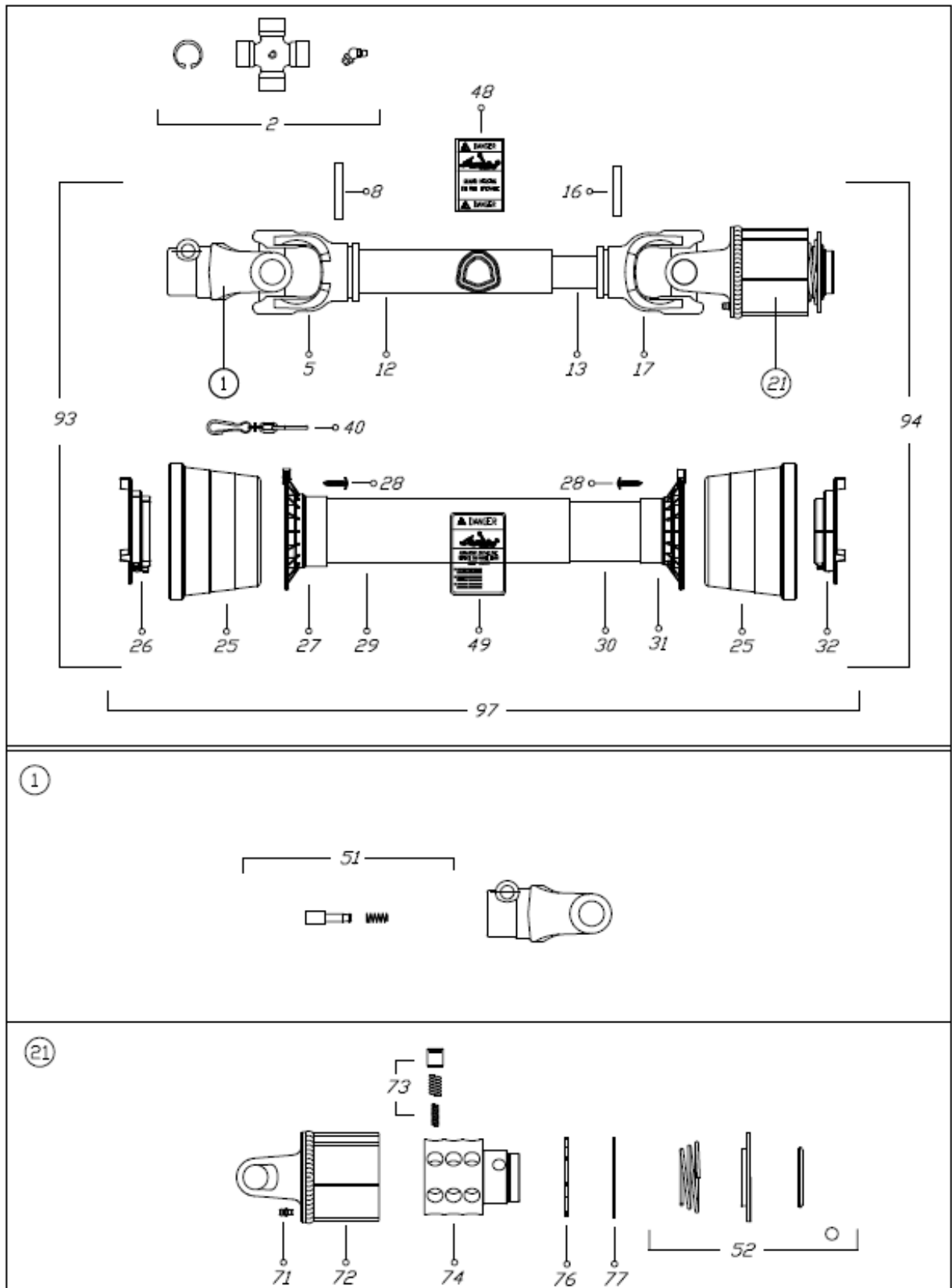


SPARE PARTS

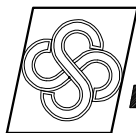
TABLE NO. 920.196/a				
ST 780 H				
ITEM	Q.ty	PART NO	DESCRIPTION	NOTE
1	1	220.286	GEARBOX	
2	1	210.995	FORK	
3	2	630.834	BEARING 6206 2RS	
4	1	220.006	AXLE	
5	1	220.008	SHAFT	
6	1	220.120	PIN	
7	2	600.316	SNAP RING D. 25	
8	1	230.142	SUPPORT L.H.	
9	2	600.004	SCREW M 12 X 30	
10	2	600.018	WASHER D. 13	
11	1	230.147	SCREW M 20 X 50	
12	1	620.257	NUT M 20	
13				
14				
15				
16				
17	1	600.123	CAP 8 X 35	
18				
19	1	220.001	PINION	
20	1	220.287	GEARBOX	
21	1	200.490	SHIM	
22				
23	6	620.386	SCREW M12x60	
24	1	220.030	PIN	
25	1	20.753	CROWN	
26	1	220.754	TINE DISC	
27	6	630.839	SCREW M12 X 35	
28	2	600.442	SCREW M 12 X 40	
29	6	620.393	SCREW M 12 X 35	
30	1	610.870	SPRING PIN D 12 X 55	
31				
32				
33				
34				
35				
36				
37				
38				
39				
40				
41				
42	1	600.533	SNAP RING E 16	
43				
44	1	230.213	BUSH	
45	1	200.475	SHIM	
46	1	600.063	SCREW M10x45	
47	1	600.029	NUT M10	
48	2	600.750	SCREW M12 X 50	
49				
50	22	600.018	WASHER D. 13	
51	12	620.355	NUT M12	
52				
53	1	230.158	L.H. GUARD	
54	1	230.160	L.H. GUARD	

TABLE NO. 920.196/a				
ITEM	Q.ty	PART NO	DESCRIPTION	NOTE
55	2	630.836	BEARING 6207-2RS	
56	6	230.137	TINE ARM	
57	6	220.100	TINE	
58	6	620.405	SCREW M14 X 60	
59	6	620.441	NUT M14	
60				
61	6	230.138	TINE LOCK	
62				
63	1	220.744	HUB	
64	2	600.968	GREASE NIPPLE M6 X 45°	
65	2	220.128	PIN	
66	1	220.032	TIRE BRACKET	
67	1	610.272	TIRE ASSY	
68				
69	1	220.745	BUSH	
70	1	600.568	GASKET	
71	1	220.384	SUPPORT L.H.	
72	1	600.176	SCREW M16 X 50	
73	1	600.031	WASHER D. 17	
74	1	600.080	NUT M16	
75	2	600.124	GREASE NIPPLE M6	
76	1	610.871	SPRING PIN D. 7 X 55	
77	2	600.896	PLUG	
78	1	220.303	TIE ROD	
79	2	220.300	PIN	

# CARDAN SHAFT 620.113



CARDAN SHAFT 620.113				
ITEM	PART NO	Q.ty	DESCRIPTION	NOTE
01	630.723	1	YOKE	
02	610.235	2	CROSS JOURNAL ASS.	
05	610.236	1	OUTER TUBE YOKE	
08	610.208	1	FLEXIBLE PIN	
12	610.209	1	CARDAN TUBE	
13	610.237	1	CARDAN TUBE	
16	610.211	1	FLEXIBLE PIN	
17	610.238	1	INNER TUBE YOKE	
21	630.716	1	TORQUE LIMIT. LW3 S60 x 04	
25	630.400	2	CONE SHIELD BELL 03-04	
26	630.401	1	OUTER BEARING 03-04	
27	630.402	1	OUTER BASE CONE 03-04	
28	630.389	6	SCREW	
29	640.012	1	OUTER SAFETY TUBE	
30	640.013	1	INNER SAFETY TUBE	
31	630.405	1	INNER BASE CONE 03-04	
32	630.406	1	INNER BEARING 03-04	
40	610.068	1	CHAIN	
48	630.719	1	LABEL DANGER OUTER DRIVE TUBE	
49	630.721	1	EXTERNAL SHIELD LABEL	
51	610.057	1	COMPLTE PUSH BUTTON	
52	620.830	1	BALL COLLAR KITT	
71	610.216	1	GREASE NIPPLE	
72	610.217	1	CASING WITH YOKE	
73	610.218	24	RATCHET TOOTH	
74	630.722	1	HUB	
76	610.220	1	REATING WASHER	
77	610.221	1	CIRCLIP	
93	640.014	1	OUTER HALF SHAFT	
94	640.015	1	INNER HALF SHAFT	
97	640.016	1	SAFETY GUARD	



AGRICULTURAL MACHINERY  
**sitrex**® Spa

Zona Industriale-Viale Grecia, 8  
06018 TRESTINA-(Perugia)-ITALY  
Tel. +39.075.8540021-Telefax +39.075.8540523  
e-mail: [sitrex@sitrex.it](mailto:sitrex@sitrex.it) [www.sitrex.com](http://www.sitrex.com)

