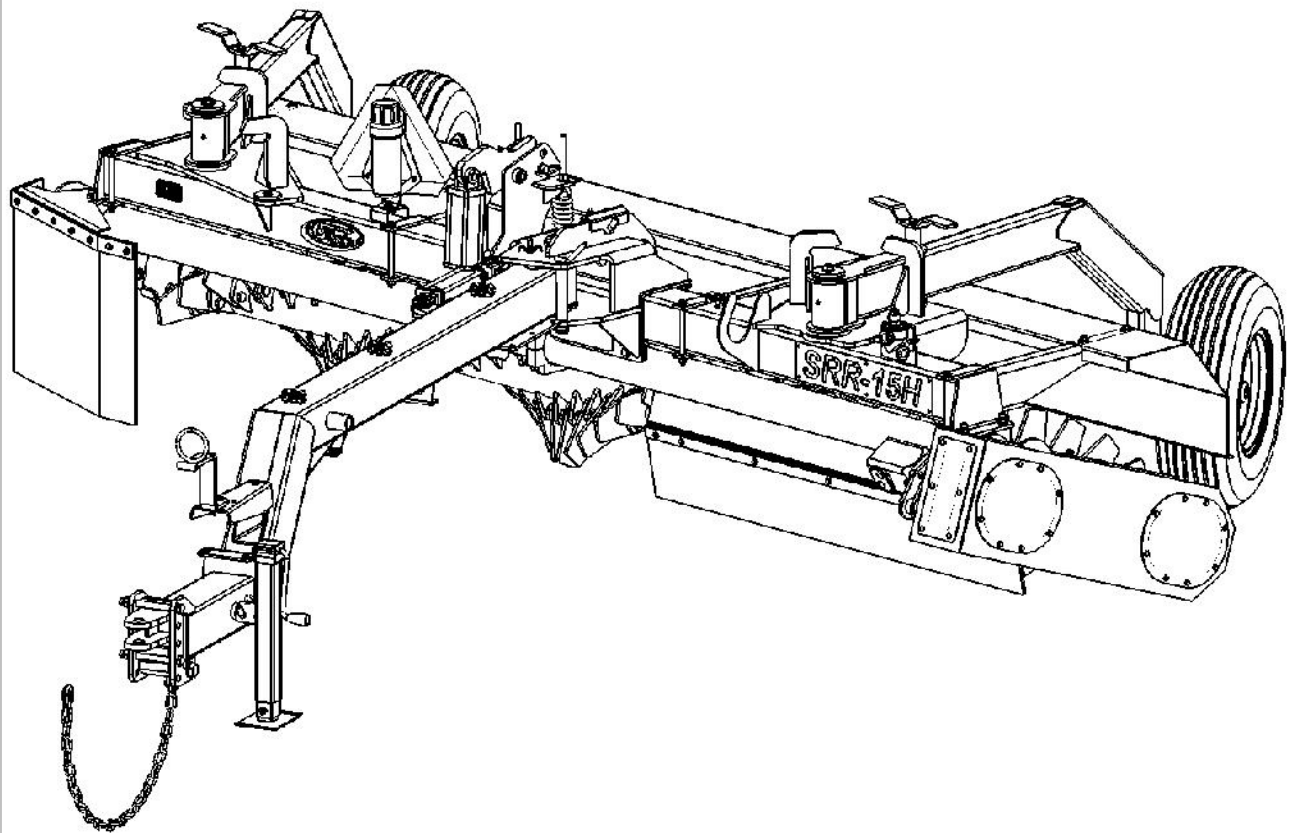




# OWNER'S MANUAL



CAT # R0315-60007

**SRR 15H ROCK RAKE**  
**R0315-00008**





Introduction.....	3
Security .....	4
Dimensions .....	10
Adjustments and maintenance .....	11
Parts.....	14
ROCK RAKE SRR-15H .....	14
SRR-15H FRAME ASSEMBLY .....	18
SRR-15 TEETH KIT .....	22
SRR-15 HOSES KIT .....	23
ECCENTRIC ASSEMBLY .....	24
SWD-15H / SRR-15H HYD. HOSES KIT .....	25
5000 LBS HUB / 01002 .....	26
Warranty.....	27
Product registration .....	28



Congratulations on your purchase of your new **S. Houle inc.** equipment!

This equipment will advantageously complement your agricultural machinery. It has been designed and built specifically for an agricultural market that is always in need of more efficient, better performing equipment.

This **Owner's Manual** is your principal reference in regards to your new equipment. To ensure your equipment delivers many years of quality use, it is important that you follow the use and maintenance guidelines set out in this manual. We urge you and those who will be using and/or performing maintenance on this equipment to ensure that **you have read and understood the contents of this manual prior to first use.**

Please keep this **Owner's Manual** within reach so that you may quickly consult it, as often as necessary. In case of ownership transfer, please ensure that you also remit this manual to the new owner or user.

Should you have any questions, or to obtain more information or additional copies of this manual, please contact us at:

**S. Houle Inc.**

300 Industrial Boulevard  
St-Germain-de-Grantham, Qc. Canada J0C 1K0  
Tel.: (819) 395-4380 Fax: (819) 395-5516  
Toll Free: 1-888-404-4380  
Email: [info@shoule.com](mailto:info@shoule.com)  
Web: [www.shoule.com](http://www.shoule.com)

*Locate this symbol – it could save your life*

This symbol is the standard safety symbol. You will find it on most of the decals on your equipment. It is also used throughout this manual.

This symbol is used mainly to draw your attention and to warn you of possible dangers and/or potential injuries.



**It is vital that you read and understand completely the following instructions and safety rules prior to using your equipment.**



The safety symbol accompanied by the word “DANGER” indicates an immediate danger capable of causing serious injury or death.



The safety symbol accompanied by the word “WARNING” indicates a potential danger capable of causing serious injury or death.



The safety symbol accompanied by the word “CAUTION” indicates a potential danger capable of causing injury.

Being well informed is your best protection against accidents. It is therefore important that you give particular attention to the safety guidelines presented in this manual.

**Think SAFETY! Work SAFELY!**



As the owner of this equipment, you are responsible for the safety of its users and those who are responsible for its maintenance. You and any other person using or performing maintenance on this equipment must be familiar with its operation and maintenance, as well as the safety measures contained in this manual. Having safe working practices guarantees a safer work environment.

The owner of this equipment must inform any user of all instructions related to proper operation and use of this equipment, prior to first use.

The user must read, understand and respect all operating and safety instructions contained in this manual. A user who is unaware or ignores the operating and safety instructions contained herein is not qualified to operate this equipment, and exposes him/herself and bystanders to possible serious injury and or death.

Do not in any way modify this equipment. Unauthorized modifications could impair the proper functioning and/or safety of this equipment and possibly affect its useful life as well.

### **General Safety Measures**

1. Read and understand all operating and safety instructions and guidelines contained in this manual prior to using, maintaining or adjusting the equipment.
2. Ensure all safety guards and shields are properly installed prior to using the equipment.
3. Always have a first aid kit within reach, and know how to use it.
4. Always have a fire extinguisher within reach, and know how to use it.
5. Wear appropriate safety gear, such as: hard hat, safety boots, safety goggles, gloves, ear plugs, etc.
6. Clear the area of people, especially children, prior to engaging the equipment.

### **Operating Safety**

In addition to reading and fully understanding this manual,



you should:

1. Lower the equipment, stop the tractor's engine, set controls to neutral, engage the emergency brake, remove the tractor's ignition key and wait for all moving parts to come to a full stop prior to detaching or servicing the equipment.
2. Keep hands, feet, hair and all clothing away from all moving parts and/or rotating parts.
3. Do not allow bystanders on the equipment or the tractor.
4. Do not remove protective guards or shields. Ensure they are in place and properly attached.
5. Clear the area of all people, especially small children, prior to engaging the equipment and/or the tractor.
6. Be extremely cautious while servicing or while near high pressure hydraulic systems. Ensure all components are fully sealed and in good working order prior to operating the equipment.
7. Ensure all reflectors, lights and the safety triangle are clean prior to transportation on public roads. Check with local authorities to ensure you are compliant with all lighting requirements.

### **Maintenance Safety**

In addition to reading and fully understanding this manual, you should:

1. Lower the equipment, stop the tractor's engine, set controls to neutral, engage the emergency brake, remove the tractor's ignition key and wait for all moving parts to come to a full stop prior to detaching or servicing the equipment.
2. Keep hands, feet, hair and all clothing away from all moving parts.
3. Clear the area of all people, especially small children, prior to engaging the equipment and/or the tractor.
4. Place safety stands or blocks underneath the frame prior to working underneath the equipment.

5. Be extremely cautious while servicing or while near high pressure hydraulic systems. Ensure all components are fully sealed and in good working order prior to operating the equipment. Wear appropriate safety gear to protect your eyes and hands. Use a piece of wood or cardboard as a shield when examining a hose or fitting for a leak.
6. Always relieve pressure prior to disconnecting or servicing hydraulics.
7. Always use original parts when any need replacing.
8. Do not in any way modify this equipment, its components or its intended use. Fabrication S.Houle inc. will not be held responsible should breakage or injury occur as a result of using any non-approved parts or accessories.
9. Do not operate equipment that is defective or that has parts missing.
10. Inspect nuts and bolts regularly and ensure they are tightly secured.

### **Hydraulic System Safety**

In addition to reading and fully understanding this manual, you should:

1. Always set the hydraulic controls to neutral prior to disassembling the hydraulic system.
2. Be extremely cautious while servicing or while near high pressure hydraulic systems. Ensure all components are fully sealed and in good working order prior to operating the equipment. Wear appropriate safety gear to protect your eyes and hands. Use a piece of wood or cardboard as a shield when examining a hose or fitting for a leak.

### **Transportation Safety**

In addition to reading and fully understanding this manual, you should:

1. Check with local authorities to ensure you are compliant with all machinery transportation safety requirements.





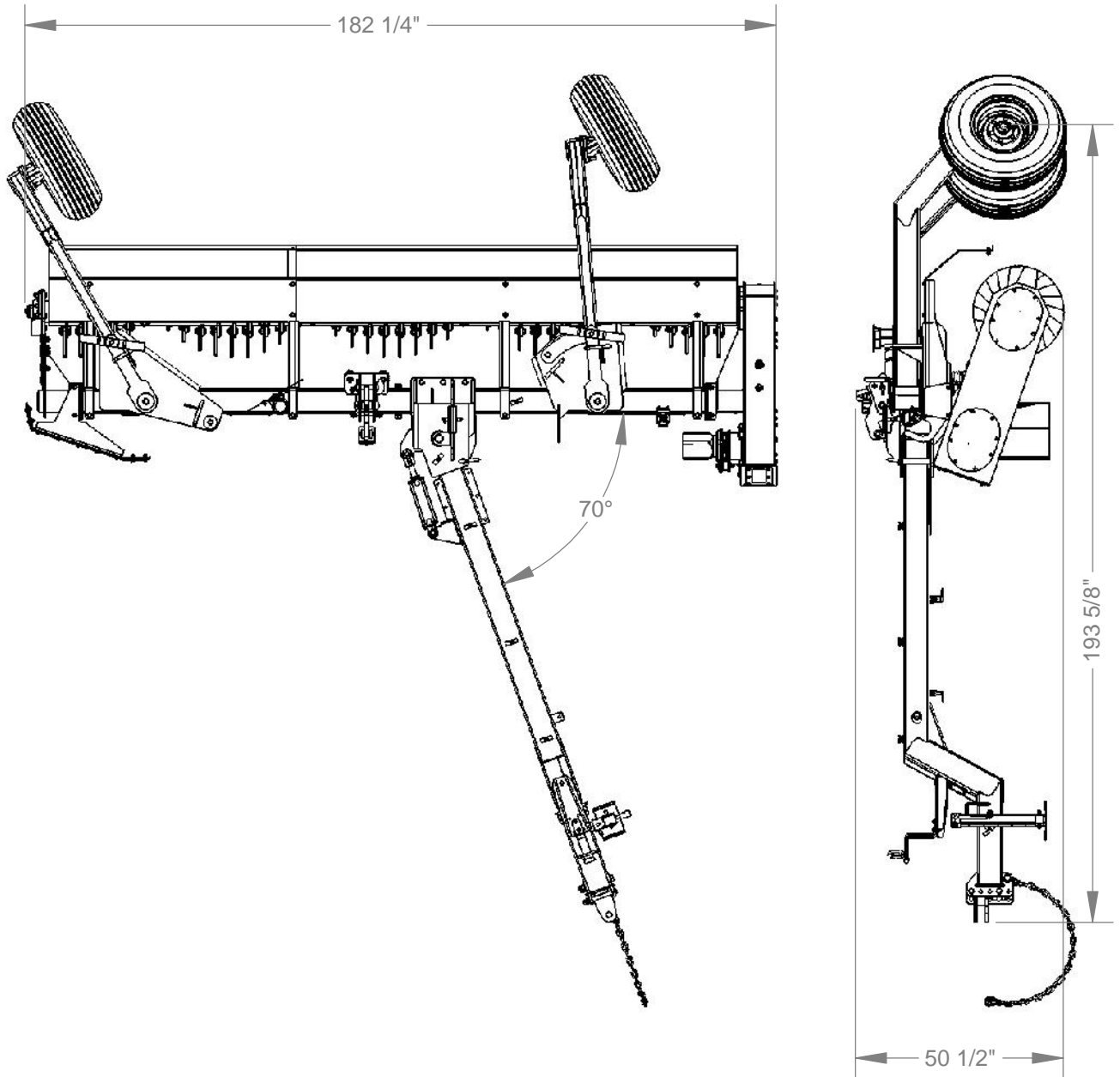
**Storage Safety**

1. Store the equipment in an area well away from human activity.
2. Store the equipment in the lowered position.
3. Do not allow children to play near the stored equipment.



**SRR 15H ROCK RAKE**  
**R0315-00008**

*Dimensions*





### To the New Operator or Owner

The Fabrication SHOULE SRR-15M Rock Rakes are designed to efficiently windrow rocks from 2 to 12 inches (50 to 300 mm) diameter. Many of the features incorporated into this machine are the result of suggestions made by customers like you.

It is the owner or operator's responsibility to read this manual carefully to learn how to operate the machine safely and how to set it to provide maximum efficiency. Safety is everyone's business. By following safe operating practices, a safe environment is provided for the operator and bystanders.

By following the operating instructions in conjunction with a good maintenance program, your Rock Rake will provide many years of trouble-free service.

### Operation

Familiarize yourself with the various settings of the Rock Rake that are designed to allow the machine to work in a variety of field conditions. Field experience will indicate the combination of machine and operating condition to give a quality job. This section will cover the interaction of the field condition and machine setting

### Rock Density

Rate the rock density as light, medium or heavy. Normally the machine ground speed will decrease as the rock density increases to insure that the teeth on the auger have the opportunity to make contact with each rock.

### Soil Condition

Dry, firm ground is ideally suited for raking. Soft ground will require adjustments to the angling of the spiral drum to insure that the soil can fall between the teeth on the right end and not be moved into the windrow. Wet soil will ball up with the rocks and can plug the teeth. Give the soil more time to dry before raking.

It is recommended that the teeth on the left end of the drum penetrate the ground about 2 inches (50mm). Soft soil conditions require a lighter floatation; Hard soil a heavier floatation.

### Auger RPM

Changing the engine speed changes the auger RPM. It is recommended that the PTO/Auger speed always be run at rated RPM and the ground speed be varied by changing gears in the tractor.

### Forward Speed

The recommended ground speed varies from 2 to 6 mph (3,2 - 9,7 km/h) and is determined by rock density and size. When you see that rocks are being missed behind the machine, slow down. Increase the speed when the rock density decreases.

### Transporting

Be sure the SMV sign is facing to the rear. Clean the SMV sign, lights, and reflectors

Always use the hazard flashers on the tractor when transporting

Do not exceed 20 mph (32 km/h) when transporting. Never exceed a safe travel speed. Slow down when cornering or on rough roads.

Open at maximum the Float Arm Hydraulic Cylinder and clip on the hydraulic cylinder stopper.





### Suspension system

The auger is supported on springs to carry part of the weight. The springs provide suspension systems that allow the drum to float over obstacles encountered in the field and reduce the shock loads.

To adjust the spring load Turn the nut on each eyebolt until there is approximately 4 inches between the spring and the plate



### Tractor Specifications

Use only a tractor of sufficient power and weight to adequately handle the machine. It is recommended that the tractor have at least 65 Hp for efficient operating conditions.

Always attach a safety chain between the tractor and the machine to prevent unexpected separation.

### Narrow Transportation to Field Transportation

Remove the hydraulic cylinder stopper and place in storage hole.



Remove the hitch pole safety pin



Retract the hitch pole cylinder in working position and replace the hitch pole safety pin.

Remove the PTO drive shaft from the storage holder and install it on gearbox output shaft. Retract the storage holder. (Not applicable for hydraulic drive system)

Remove the float arm pin and place it in the storage hole.



### Field Position to Narrow Transportation

Disconnect the PTO drive shaft first to avoid possible damage. (Not applicable for hydraulic drive system)

Raise the auger to its highest position and lock the cylinder with the stopper.

Remove the hitch pole safety pin, extend the hitch pole cylinder and replace the hitch pole safety pin.



## Maintenance

Wipe the grease fittings with a clean cloth before greasing.

Lubricate all greasers for every eight hours of operation.

Verify oil level in the gear box once a month. Perform oil change once a year, using gear oil grade 80W90.

Verify drive chain tension after first eight hours of operation, and then once a month.

The auger teeth have been designed to be easily inverted when one side becomes too worn. To invert, remove the bolts. Turn the tooth over and simply bolt it back into place. While facing the rock rake, place the tooth on the left side of its support.

### For Rake with: Mechanical Drive System

Check the gearbox oil level once a month. Perform oil change once a year, using gear oil grade 80W90.

During adjustment of the torque limiter, the springs must be compressed to length of 1 5/16", which should be periodically verified. Warning: if the springs are compressed to a length inferior to 1 5/16", there is a risk of damage to the gearbox and the drive chain components.



### For Rake with: Hydraulic drive system

The quality of oil use is the most important factor for the longevity of the hydraulic components.

Have the oil analyzed at a hydraulic oil retailer at start of the season. This analysis will indicate the quality of your oil and let you know if you need to change the oil or the oil filter, or if using an additive will suffice.

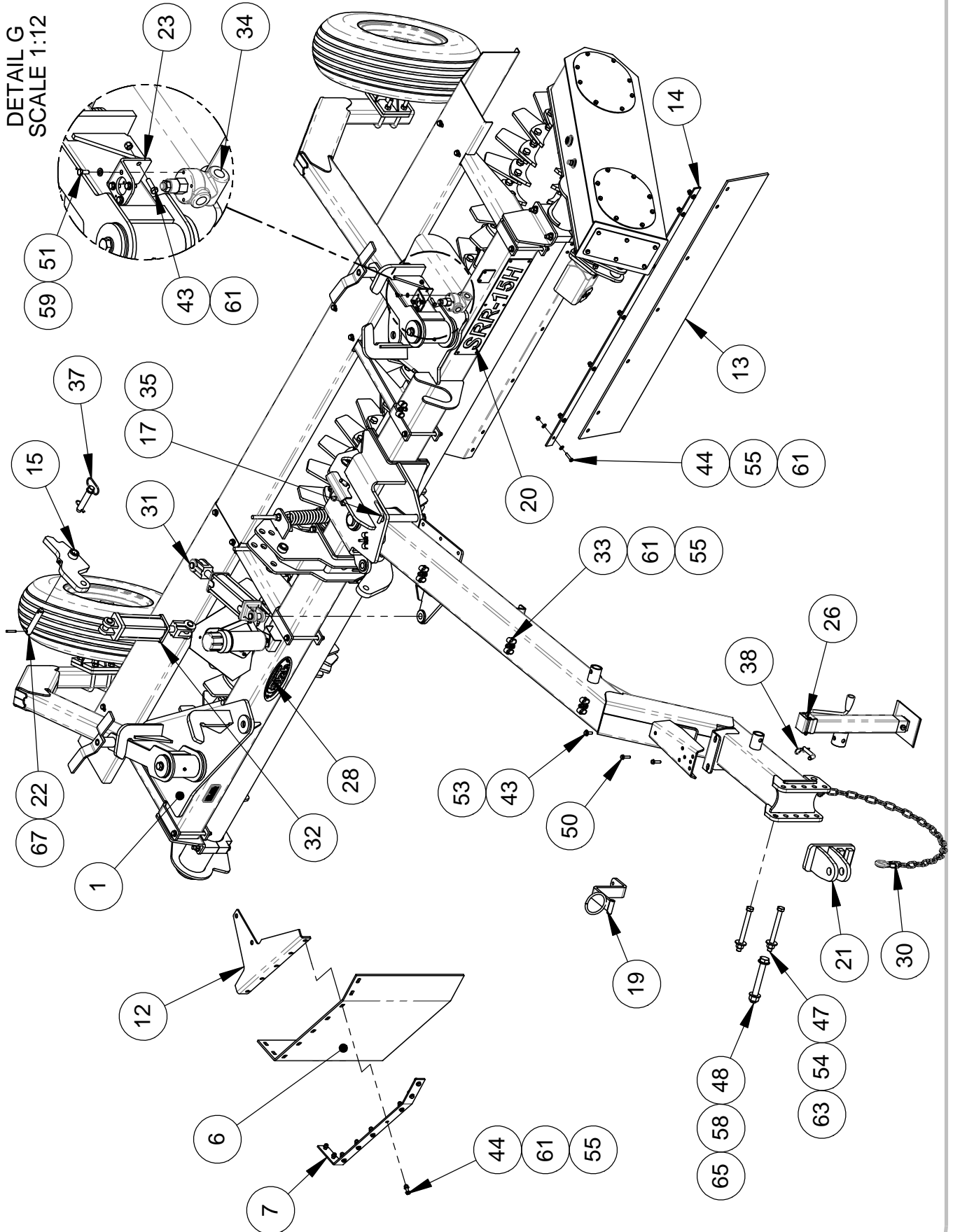
Be mindful of the oil temperature. The temperature should be inferior to 82C (180f). If the oil temperature reaches this point, stop using rake immediately and verify the oil cooling system.

If you must add or change the oil, use oil grade TDH. Be very vigilant when filling the reservoir. If contaminants enter the reservoir, the lifespan of hydraulic components will be affected. It is recommended to fill the reservoir using a unit equipped with a filter.



# SRR 15H ROCK RAKE R0315-00008

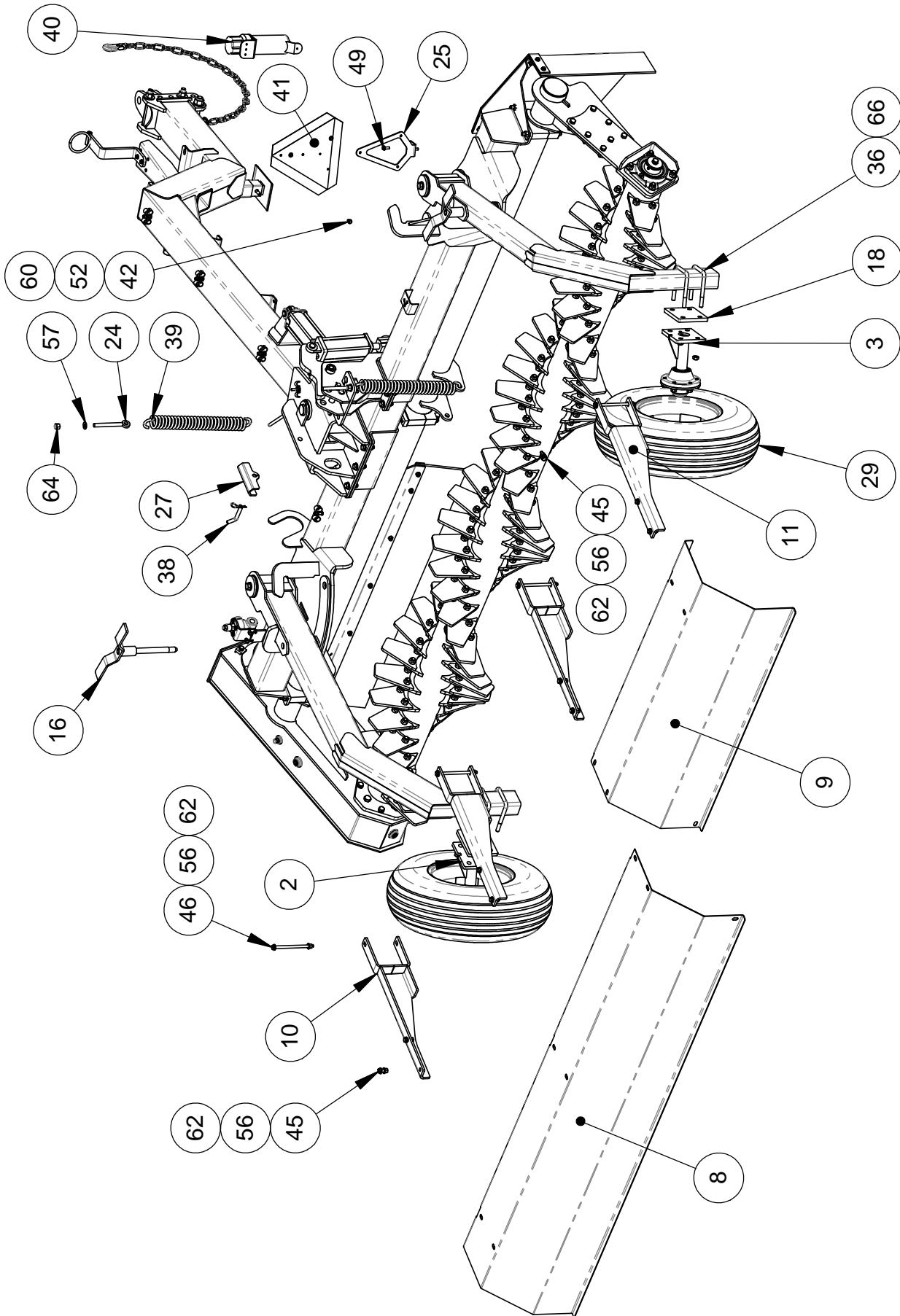
Parts





SRR 15H ROCK RAKE  
R0315-00008

Parts





# SRR 15H ROCK RAKE R0315-00008

Parts

ITEM	NO	DESCRIPTION	QTY
1	R0315-05E08	SRR15H FRAME ASS.	1
2	R0315-01E01	SRR-15 AXEL ASS'Y	1
3	R0315-01E02	SRR-15 AXEL ASS'Y	1
4	R0315-29E01	SRR15 HOSES KIT	1
5	R0415-29E03	SWD-15H / SRR-15H HYD. HOSES KIT	1
6	R-04015	RUBBER GUARD	1
7	R-04016	GUARD SUPPORT	1
8	R-04026	GUARD	1
9	R-04027	GUARD	1
10	R-04030	GUARD SUPPORT	2
11	R-04031	GUARD SUPPORT	2
12	R-04032	GUARD SUPPORT	1
13	R-04057	RUBBER GUARD	1
14	R-04058	GUARD SUPPORT	1
15	R-05024	SPRING LEVER	1
16	R-05030	WING BOLT	2
17	R-25003	SAFETY PIN	1
18	R-28002	SHIM	2
19	R-43013-01	HOSE HOLDER	1
20	R-59011	SRR-15H LOGO	1
21	UN-20029	HITCH CLEVIS	1
22	UN-25001-33	PIN 1" x 5 7/8" (2 HOLES) (PLATED)	1
23	UN-31039	RELIEF VALVE BRACKET (31077)	1
24	UN-35012	EYE BOLT 5/8-11NC X 5 3/4"	2
25	UN-36001	SMV HOLDER	1
26	UN-43003	JACK 7000 LBS	1
27	UN-43004-03	CYL LOCKING DEVICE (6 1/2" X 1 1/2")	1
28	UN-59001-9-P5	LOGO S.HOULE 4"	1
29	03002	TIRE AND WHEEL 11L-15	2
30	07037-5	CHAIN SAFETY 1/4" x 46" Lg - 11,000 lb	1
31	30008	HYD. CYLINDER AG. 3" X 8"	1
32	30008-2	HYD. CYLINDER AG. 3" X 6"	1
33	31015	5/8" DOUBLE HOSE CLAMP	9
34	31077-P5	RELIEF VALVE (GREY)	1
35	35001-2	LYNCH PIN 1/4" X 1 3/4"	1
36	35003-8	U BOLT 5/8-11NC X 4" X 6"	4
37	35006-3	PIN 1" X 4 3/4"	1
38	35011	BENT PULL PIN 5/8" X 3"	2
39	35030-P5	EXTENSION SPRING (CHARCOAL)	2
40	36001	MANUAL HOLDER 3 1/4"	1
41	36002	SLOW MOVING VEHICLE SIGN (SMV)	1
42	45AA004200100	HEX BOLT 1/4-20NC x 1" GR5	3
43	45AA006160104	HEX BOLT 3/8-16NC x 1 1/4" GR5	7
44	45AA006160108	HEX BOLT 3/8-16NC x 1 1/2" GR5	12
45	45AA008130108	HEX BOLT 1/2-13NC X 1 1/2" GR5	9





**SRR 15H ROCK RAKE  
R0315-00008**

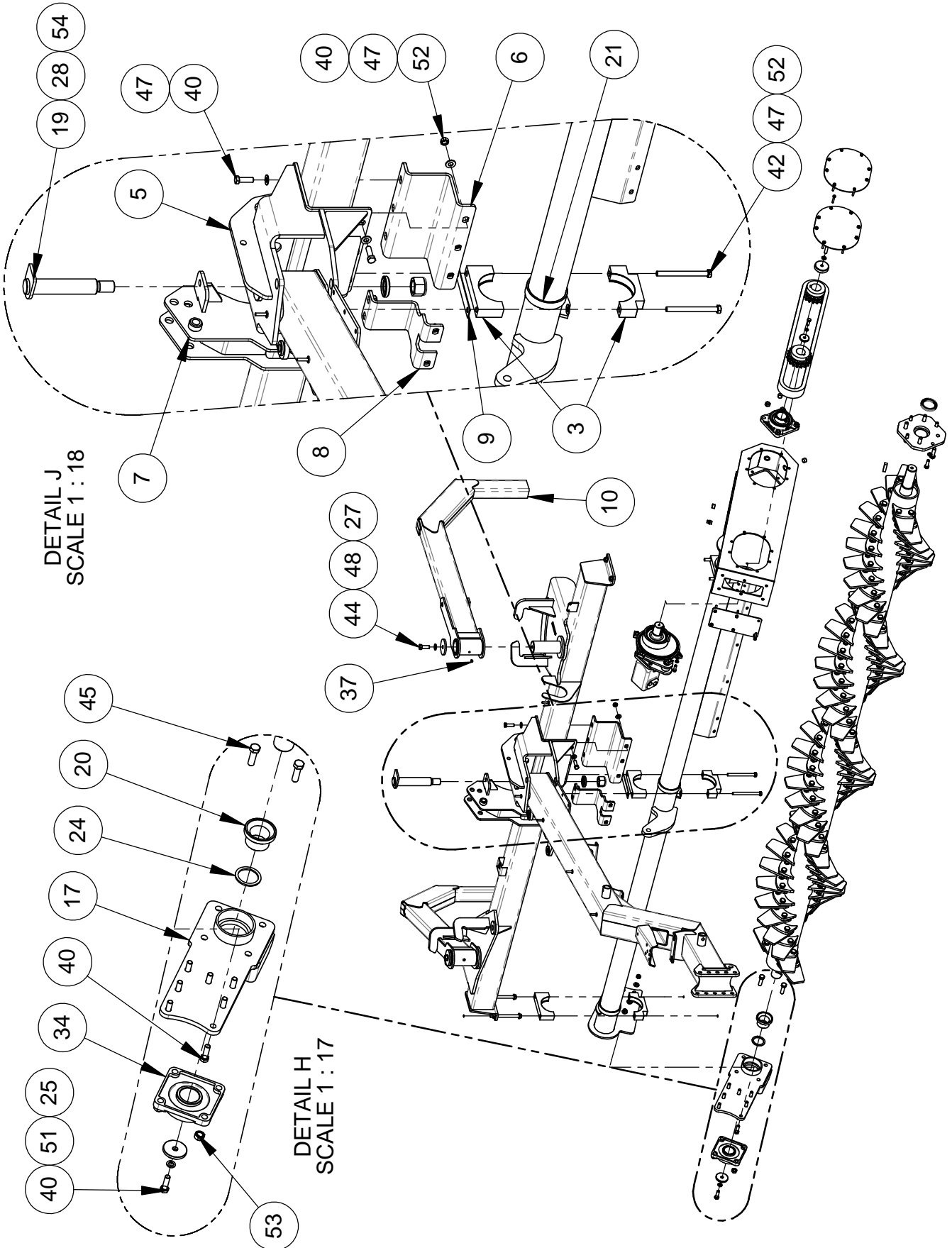
*Parts*

ITEM	NO	DESCRIPTION	QTY
45	45AA008130108	HEX BOLT 1/2-13NC X 1 1/2" GR5	9
46	45AA008130800	HEX BOLT 1/2-13NC x 8" GR5	4
47	45AA012100800	HEX BOLT 3/4-10NC x 8" GR5	2
48	45AA100080800	HEX BOLT 1-8NC x 8" GR5	1
49	45AE006160100	WHIZ-LOCK BOLT 3/8-16NC X 1"	2
50	45AE006160108	WHIZ-LOCK BOLT 3/8-16NC X 1 1/2"	2
51	45MA08125020	METRIC BOLT M8 X 1.25 X 20 GR 8.8	4
52	46AA004	FLAT WASHER 1/4"	3
53	46AA006	FLAT WASHER 3/8"	1
54	46AA012	FLAT WASHER 3/4"	2
55	46AB006	HARDENED FLAT WASHER 3/8"	37
56	46AB008	HARDENED FLAT WASHER 1/2"	26
57	46AB010	HARDENED FLAT WASHER 5/8"	2
58	46AB100	HARDENED FLAT WASHER 1"	2
59	46AC006	LOCK WASHER 3/8"	4
60	47AB00420	NYLON LOCK NUT 1/4-20 NC	3
61	47AB00616	NYLON LOCK NUT 3/8"-16NC	23
62	47AB00813	NYLON LOCK NUT 1/2-13 NC	13
63	47AB01210	NYLON LOCK NUT 3/4-10NC	2
64	47AB01011	NYLON LOCK NUT 5/8"-11NC	2
65	47AB10008	NYLON LOCK NUT 1"-8NC	1
66	47AC01011	STOVER LOCK NUT 5/8-11NC	8
67	49AA050200	SPRING PIN 5/16"X2"	1



SRR15H FRAME ASS.  
R0315-05E08

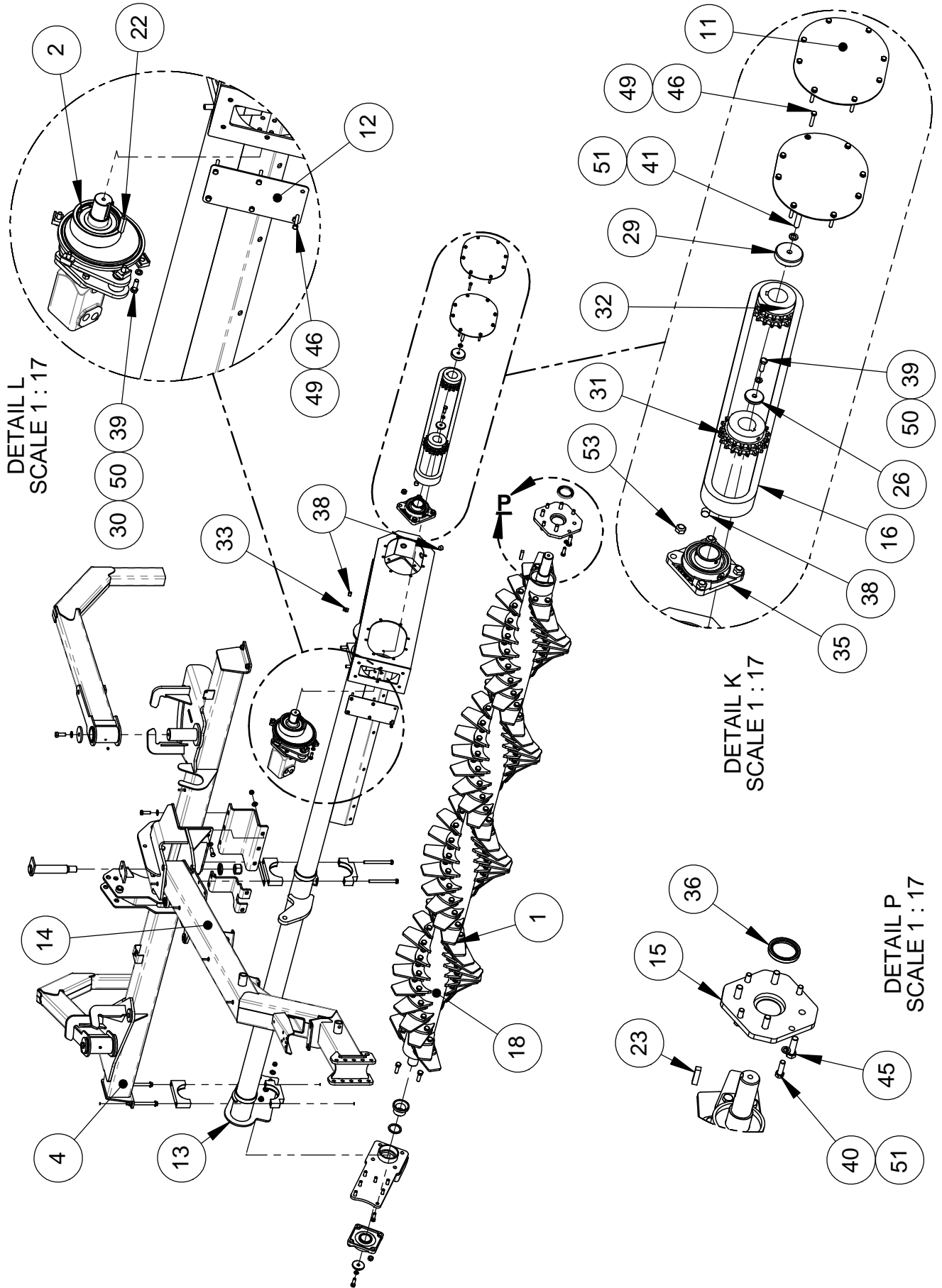
Parts





**SRR15H FRAME ASS.**  
**R0315-05E08**

Parts





**SRR15H FRAME ASS.  
R0315-05E08**

*Parts*

ITEM	NO	DESCRIPTION	QTY
1	R0315-14E01	SRR15 TEETH KIT	1
2	R0415-06E10	ECCENTRIC ASS.	1
3	R-05016	SPLIT BUSHING BEARING	3
4	R-05021	FRAME ASS'Y	1
5	R-05022	UPPER MODULE DRAWBAR	1
6	R-05022-08	UPPER MODULE DRAWBAR (PART)	1
7	R-05023	UPPER MODULE BALANCER	1
8	R-05023-05	UPPER MODULE BALANCER (PART)	1
9	R-05027	SHIM 1/8"	1
10	R-05029	WHEEL SUPPORT	2
11	R-05038	COVER	2
12	R-05039	COVER	1
13	R-05051	SRR15 AUGER SUPPORT	1
14	R-05073	SRR15 HITCH POLE	1
15	R-06014	FLANGE SUPPORT	1
16	R-07013	DRIVE CHAIN #80-2 (88")	1
17	R-14009	FLANGE BEARING BRACKET	1
18	R-14012	SRR15 AUGER	1
19	R-25002	HITCH POLE PIN	1
20	R-28001	SPACER	1
21	R-34001	BUSHING	3
22	UN-06001-17	KEY 1/2" X 1/2" X 2 1/2" 1RE	1
23	UN-06001-40	KEY 5/8" X 5/8" X 2 1/2"	1
24	UN-28006-6	SHIM 2 1/2" (3/16")	1
25	UN-28007-10	WASHER 5/8" ID X 3" OD X 3/8"	1
26	UN-28007-11	WASHER 1/2" ID X 2 3/8" OD X 3/8"	1
27	UN-28007-12	WASHER 7/8" ID X 4" OD X 3/8"	2
28	UN-28008-8	COMPRESSION WASHER 2 1/4"IDx 2 3/4"ODx 1/4" (1 9/16")	1
29	UN-28008-14	COMPRESSION WASHER 2 1/2"IDx 3 1/2"ODx 1/2" (5/8")	1
30	UN-35001-2	CLEAT	5
31	07036	SPROCKET D80B18 (2 1/4 BORE)	1
32	07036-5	SPROCKET D80B18 (2 1/2 BORE)	1
33	31054	5 PSI VENT 1/2" NPT(M)	1
34	34006-6	FLANGE BEARING 2 1/2"	1
35	34006-8	FLANGE BEARING 2 1/2" (SKF)	1
36	34039	OIL SEAL 3" ID X 4" OD X 1/2"	1
37	35012	STRAIGHT GREASE FITTING 1/8 NPT	3
38	35017-4	3/4-NPT PLUG, SQUARE RECESD	3
39	45AA008130108	HEX BOLT 1/2-13NC X 1 1/2" GR5	6
40	45AA010110200	HEX BOLT 5/8-11NC X 2" GR5	22
41	45AA010110208	HEX BOLT 5/8-11NC X 2 1/2" GR5	1
42	45AA010110700	HEX BOLT 5/8-11NC x 7" GR5	2
43	45AA010110708	HEX BOLT 5/8-11NC x 7 1/2" GR5	4
44	45AA012100200	HEX BOLT 3/4-10NC X 2" GR5	2



**SRR15H FRAME ASS.  
R0315-05E08**

*Parts*

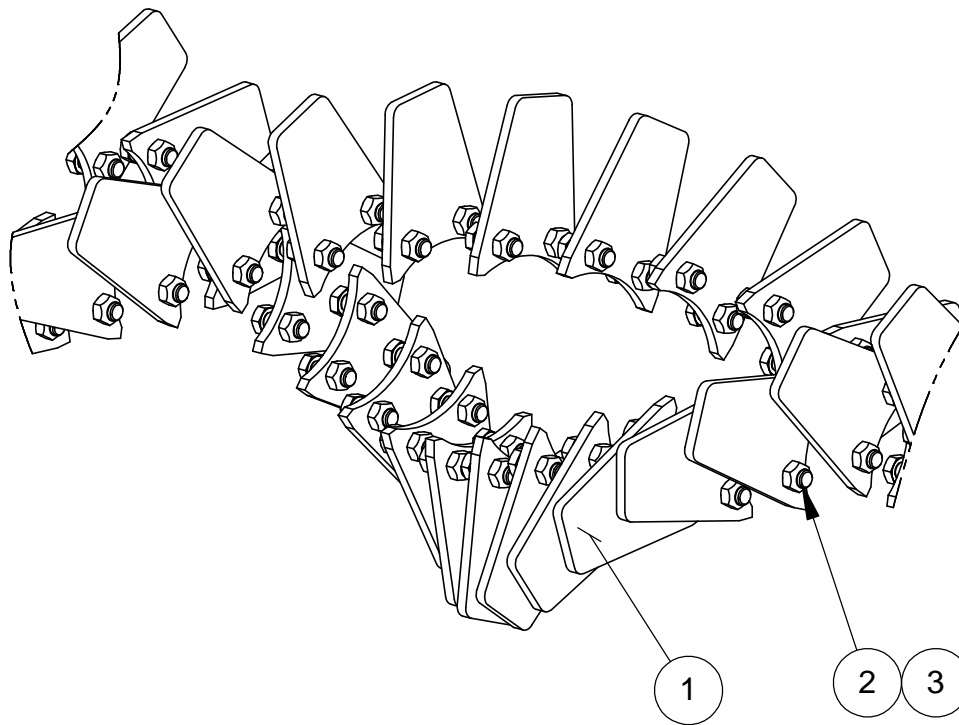
ITEM	NO	DESCRIPTION	QTY
45	45AA012100208	HEX BOLT 3/4-10NC X 2 1/2" GR5	8
46	45AA006160200	HEX BOLT 3/8-16NC x 2" GR5	22
47	46AB010	HARDENED FLAT WASHER 5/8	37
48	46AB012	HARDENED FLAT WASHER 3/4"	2
49	46AC006	LOCK WASHER 3/8"	10
50	46AC008	LOCK WASHER 1/2"	6
51	46AC010	LOCK WASHER 5/8"	6
52	47AC01011	STOVER LOCK NUT 5/8-11NC	21
53	47AC01210	STOVER LOCK NUT 3/4-10NC	8
54	47AB10806	NYLON LOCK NUT 1 1/2-6NC	1



# SRR15 TEETH KIT R0315-14E01

Parts

ITEM	NO	DESCRIPTION	QTY
1	UN-14002	ROCK RAKE TOOTH	85
2	45AA012160200	HEX BOLT 3/4-16NF. X 2" GR5	170
3	47AC01216	STOVER LOCK NUT 3/4-16NF	170

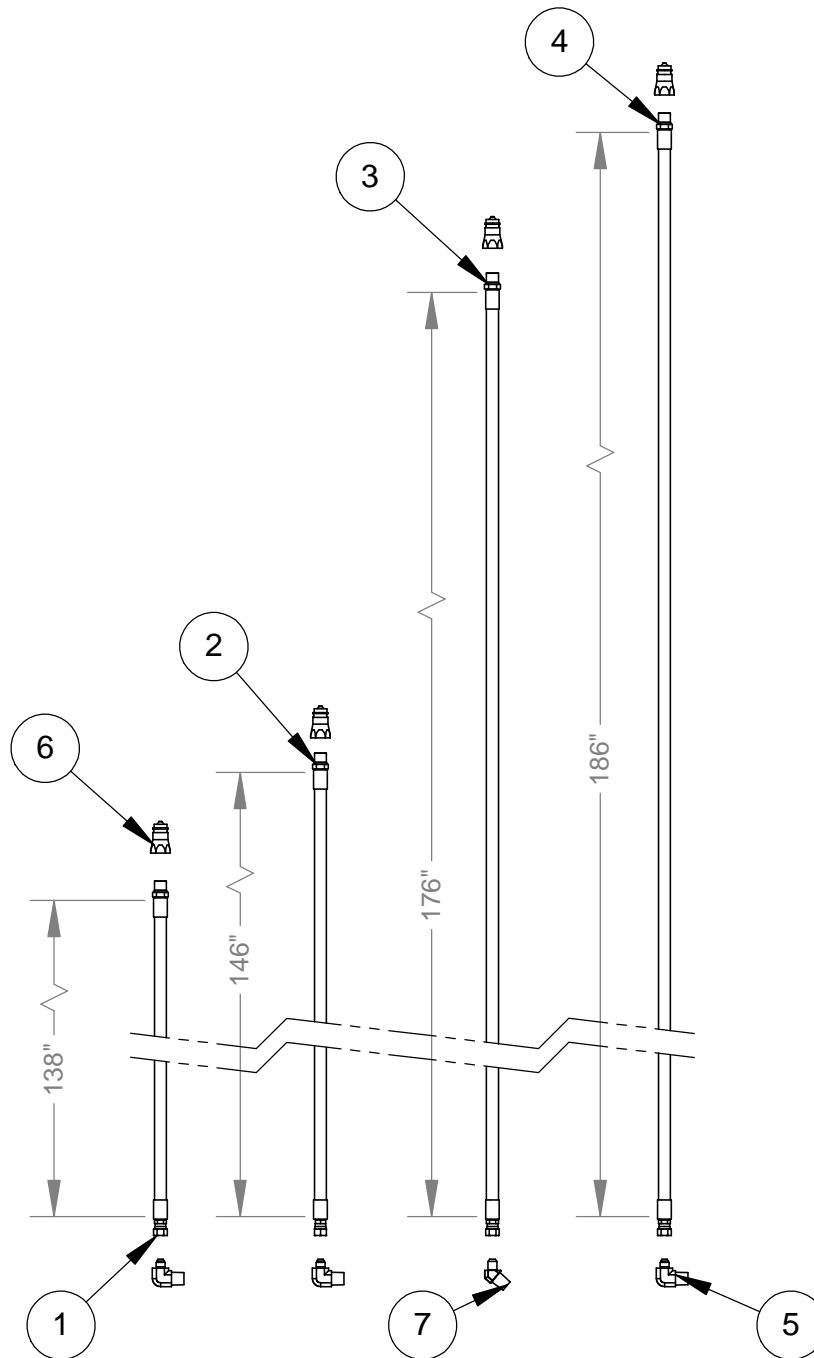




# SRR15 HOSES KIT R0315-29E01

Parts

ITEM	NO	DESCRIPTION	QTY
1	UN-29028-138	HYD. HOSE 3/8" LP 3/8" JIC(F) x 1/2" ORB(M) X 138"	1
2	UN-29028-146	HYD. HOSE 3/8" LP 3/8" JIC(F) x 1/2" ORB(M) X 146"	1
3	UN-29028-176	HYD. HOSE 3/8" LP 3/8" JIC(F) x 1/2" ORB(M) X 176"	1
4	UN-29028-186	HYD. HOSE 3/8" LP 3/8" JIC(F) x 1/2" ORB(M) X 186"	1
5	31013-6	HYDRAULIC FITTING 1/2" NPT(M) / 3/8" JIC(M)(90)	3
6	31016-2	QUICK COUPLER MALE 1/2"ORB(F) (S71-15P)	4
7	31030-6	HYDRAULIC FITTING 1/2"NPT(M) / 3/8"JIC(M) (45°)	1

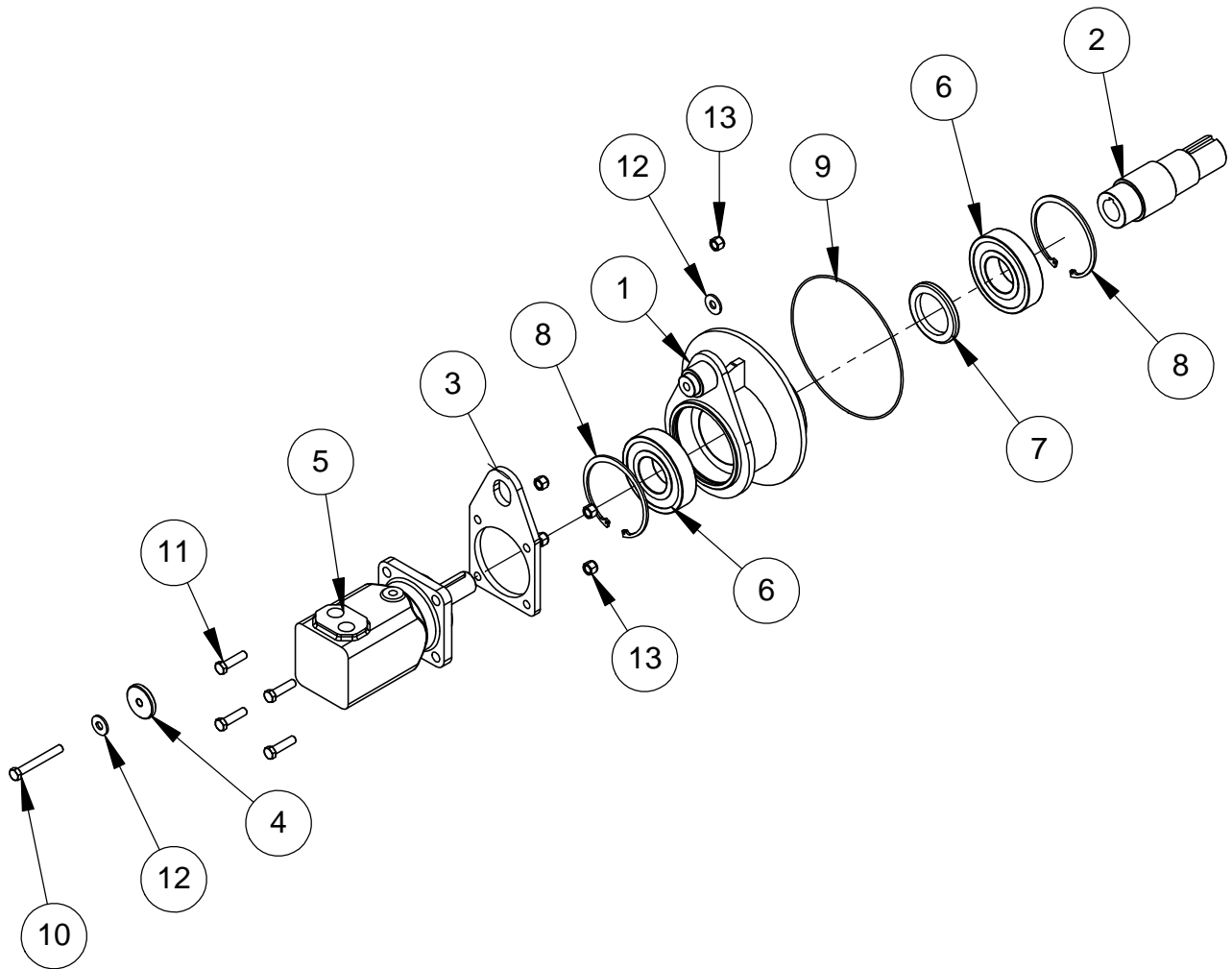




# ECCENTRIC ASS. R0415-06E10

Parts

ITEM	NO	DESCRIPTION	QTY
1	R-06033	ECCENTRIC	1
2	R-06034	SHAFT	1
3	R-31016	HYDRAULIC MOTOR SUPPORT	1
4	UN-28007-11	WASHER 1/2" ID X 2 3/8" OD X 3/8"	1
5	31055-2	HYDRAULIC MOTOR 500cc	1
6	34007-6	BEARING 65 mm (6313-2RS)	2
7	34010-8	OIL SEAL	1
8	35002-7	INTERNAL RETAINING RING 140mm	2
9	35018-3	O-RING SEAL	2
10	45AA008130400	HEX BOLT 1/2-13NC X 4" GR5	1
11	45AB008130200	HEX BOLT 1/2"-13NC X 2" GR8	4
12	46AA008	FLAT WASHER 1/2"	2
13	47AB00813	NYLON LOCK NUT 1/2-13 NC	5



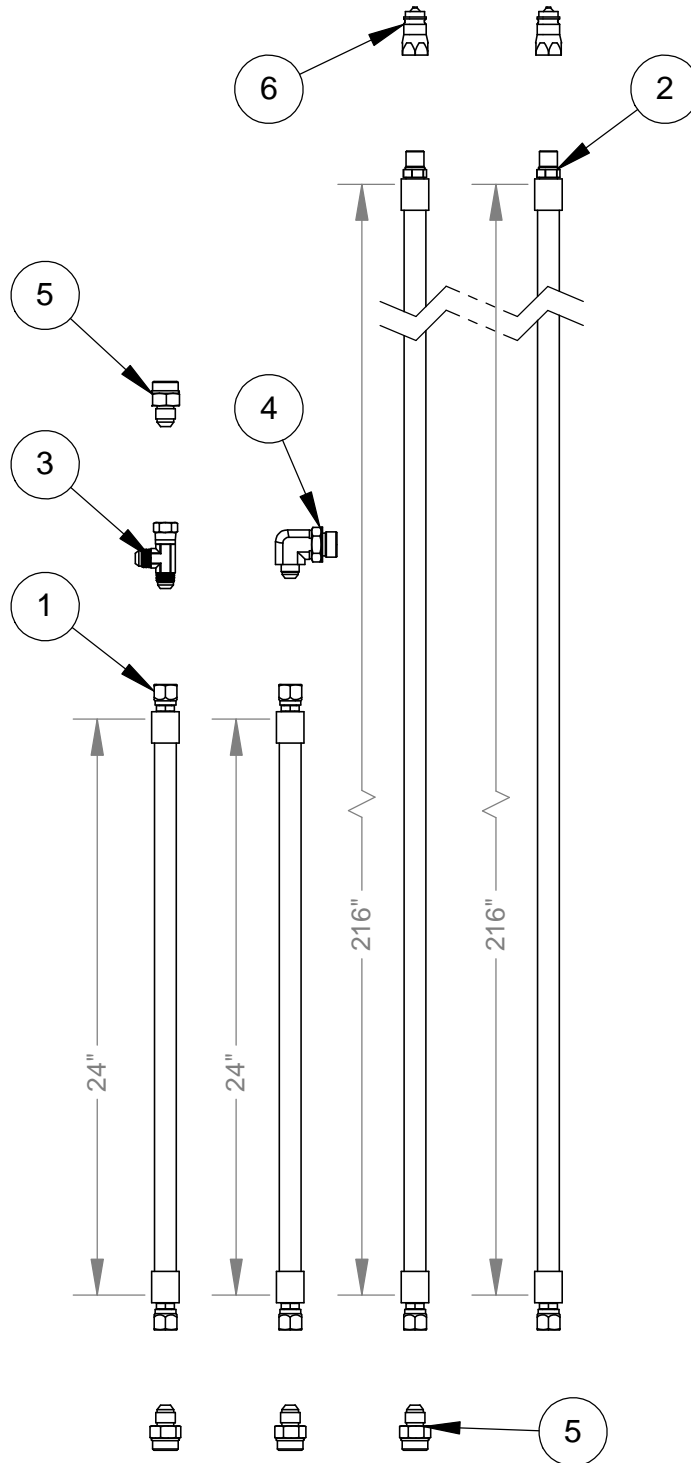




# SWD-15H / SRR-15H HYD. HOSES KIT R0415-29E03

Parts

ITEM	NO	DESCRIPTION	QTY
1	UN-29009-024	HYD. HOSE 1/2" LP 1/2" JIC(F) x 1/2" JIC(F) X 24"	2
2	UN-29031-216	HYD. HOSE 1/2" LP 1/2" JIC(F) x 1/2" ORB(M) X 216"	2
3	31002-12	ADAP. 1/2 JIC(M) / 1/2 JIC(M) / 1/2 JIC(F)(RUN TEE)	1
4	31013-19	ADAP. 3/4" ORB(M) / 1/2" JIC(M)(90)	1
5	31014-46	ADAP. 3/4" ORB(M) / 1/2" JIC(M)(STR)	4
6	31016-2	QUICK COUPLER MALE 1/2"ORB(F) (S71-15P)	2

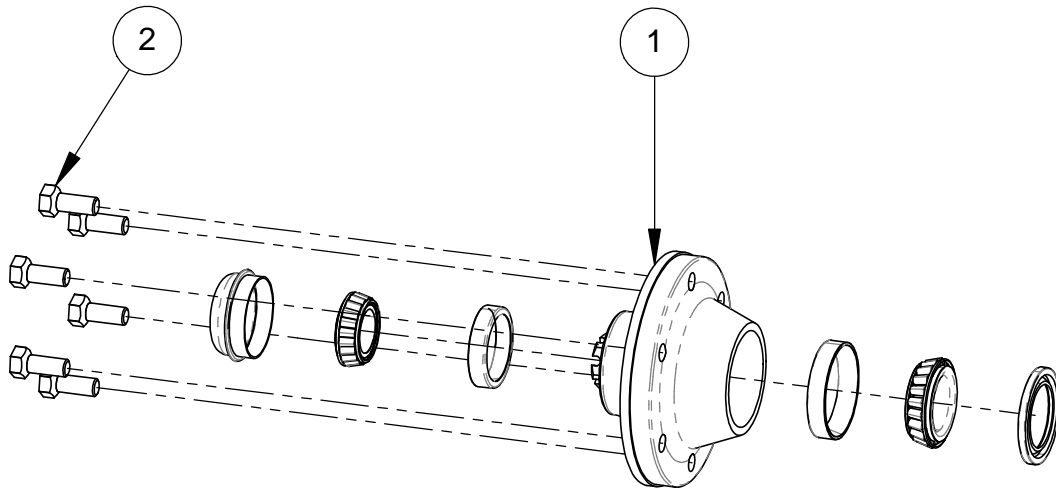




# 5000 LBS HUB 01002

Parts

ITEM	NO	DESCRIPTION	QTY
1	01004	5000 LBS HUB	1
2	01009	WHEEL BOLT 9/16-18 NF x 1 3/4"	6
3	01008	CASTLE NUT 1-14 NF	1
4	01E03	5000 LBS HUB BEARING AND SEAL KIT	1





## Warranty Policy on new S Houle equipment

---

S Houle Inc. offers a warranty on all new equipment for a period of **1 year after date of retail purchase**, according to the terms listed below:

1. **AN APPROVAL FROM S HOULE INC. IS REQUIRED BEFORE ANY REPAIRS OR WARRANTY CLAIMS, WITH ACCOMPANYING PHOTOS AND THE EQUIPMENT'S SERIAL NUMBER;**
2. All claims must be received **30 days after date of approval;**
3. The equipment is F.O.B. St-Germain-de-Grantham at all times;
4. All defective parts must be returned to S Houle Inc. or retrieved by a representative of the manufacture **within a period of 30 days following the warranty claim;**
5. The S Houle warranty covers all defects in material or fabrication of the products only, and therefore does not covers the normal wear or non-recommended utilization of the product. All breaks resulting from an accident or abusive use will not be covered by the warranty policy;
6. The warranty does not cover any traveling fees to gain access to the equipment for evaluation or repairs;
7. Only original parts or S Houle approved parts will be considered appropriate for warranty claims;
8. S Houle Inc. reserves the right to refuse any labor time deemed excessive for any repair work claimed on warranty.
9. The labor fees compensated on warranty claims may never exceed **100\$/hour;**
10. On request, S Houle Inc. can provide the service of a road mechanic to effect repairs, for a fee of 100\$/hour + travel fees of 0.60\$/km;
11. The standard color of all equipment out of the factory will be S Houle yellow unless specifically requested by the client;
12. The warranty policy does not apply to the **NORMAL WEAR PARTS** listed below:

***Examples: Flow divider, cutting edges, bolts, nuts, spring blades, skid shoes, skid shoe bolts, sliders, chaines and chain hitches, cast iron shoes, hydraulic hoses, clutch and clutch components, gearboxes, driveshafts and others.***

### PURCHASER'S RESPONSIBILITIES

The present warranty presumes a correct maintenance and periodic inspections of the equipment by the owner, as described in the Owner's Manual provided with the equipment at time of purchase. The cost of regular maintenance or required servicing is the responsibility of the client. The buyer must conserve all receipts proving that the required maintenance has been respected.

### EXCLUSIONS ON SUBSEQUENT MANUFACTURER UPGRADES

S Houle Inc. reserves the right to modify, change or improve any product with no obligation to replace or modify any previously purchased equipment.



### S Houle inc.

300 Industrial blvd.  
St-Germain-de-Grantham, Quebec, Canada, J0C 1K0  
Phone : 819 395-4380 Fax. : 819 395-5516  
Toll free : 1 888-404-4380  
E-Mail : info@shoule.com Web: www.shoule.com

## Product Registration

**Dealer instructions:**  
Make sure registration is complete and signed.

### Product Information :

MACHINE MODEL : \_\_\_\_\_ DELIVERY DATE : \_\_\_\_\_ / \_\_\_\_\_ / \_\_\_\_\_  
mm dd yyyy

SERIAL NUMBER : \_\_\_\_\_

OPTIONAL EQUIPMENT : \_\_\_\_\_

### Customer Information :

FIRST & LAST NAME : \_\_\_\_\_ PHONE : \_\_\_\_\_

MAILING ADDRESS : \_\_\_\_\_ EMAIL : \_\_\_\_\_  
Civic number and street

\_\_\_\_\_ City

\_\_\_\_\_ State / Province \_\_\_\_\_ Zip Code

### Dealer Information :

DEALER NAME : \_\_\_\_\_ PHONE : \_\_\_\_\_

MAILING ADDRESS : \_\_\_\_\_ EMAIL : \_\_\_\_\_  
Civic number and street

\_\_\_\_\_ City

\_\_\_\_\_ State / Province \_\_\_\_\_ Zip Code

### Signatures :

\_\_\_\_\_  
Owner or designated representative signature

\_\_\_\_\_  
Authorized dealer signature

**Note : Both dealer and owner must sign in order to validate the warranty.**

### I hereby acknowledge that:

- |   |   |
|---|---|
| <ol style="list-style-type: none"> <li>I have received and accepted delivery of equipment described.</li> <li>The equipment was checked thoroughly for loose or missing parts and has been adjusted in accordance with the pre-delivery checklist.</li> <li>I have been provided with and have carefully read the instruction manual.</li> <li>I have read and understand the nature and extent of the warranty and understand clearly that there were and are no other representations or warranties, either express or implied, made by anyone.</li> <li>A copy of the present document must be completed and transmitted to Fa-</li> </ol> | <ol style="list-style-type: none"> <li>brication S.Houle as soon as possible, in order to process your warranty.</li> <li>I have been advised on proper operation, maintenance and lubrication procedures of this equipment.</li> <li>I have been instructed on and do understand the application, limitations and capacities this equipment was designed and recommended for, all as described in the Instruction Manual and other literature published by Fabrication S.Houle inc.</li> </ol> |
|---|---|

ONE YEAR WARRANTY COVER PARTS ONLY, EFFECTIVE WHEN THIS FORM HAS ALL APPLICABLE INFORMATION COMPLETED, IS SIGNED BY BOTH THE OWNER AND THE DEALER AT THE TIME OF DELIVERY, THEN FORWARDED TO **S HOULE INC.** WARRANTY SERVICE MAY BE DENIED IF THIS FORM CONTAINS FALSE INFORMATION IS OR INCOMPLETE.



### **S.Houle inc.**

300 boul. Industriel,  
St-Germain-de-Grantham, Québec, Canada, J0C 1K0  
Tél : 819 395-4380      Téléc. : 819 395-5516  
Sans frais : 1 888-404-4380  
Courriel : [info@shoule.com](mailto:info@shoule.com)      Site : [www.shoule.com](http://www.shoule.com)

### **S.Houle inc.**

300 Industrial blvd,  
St-Germain-de-Grantham, Québec, Canada, J0C 1K0T  
Phone : 819 395-4380      Fax. : 819 395-5516  
Toll free : 1 888-404-4380  
E-mail : [info@shoule.com](mailto:info@shoule.com)      Web : [www.shoule.com](http://www.shoule.com)