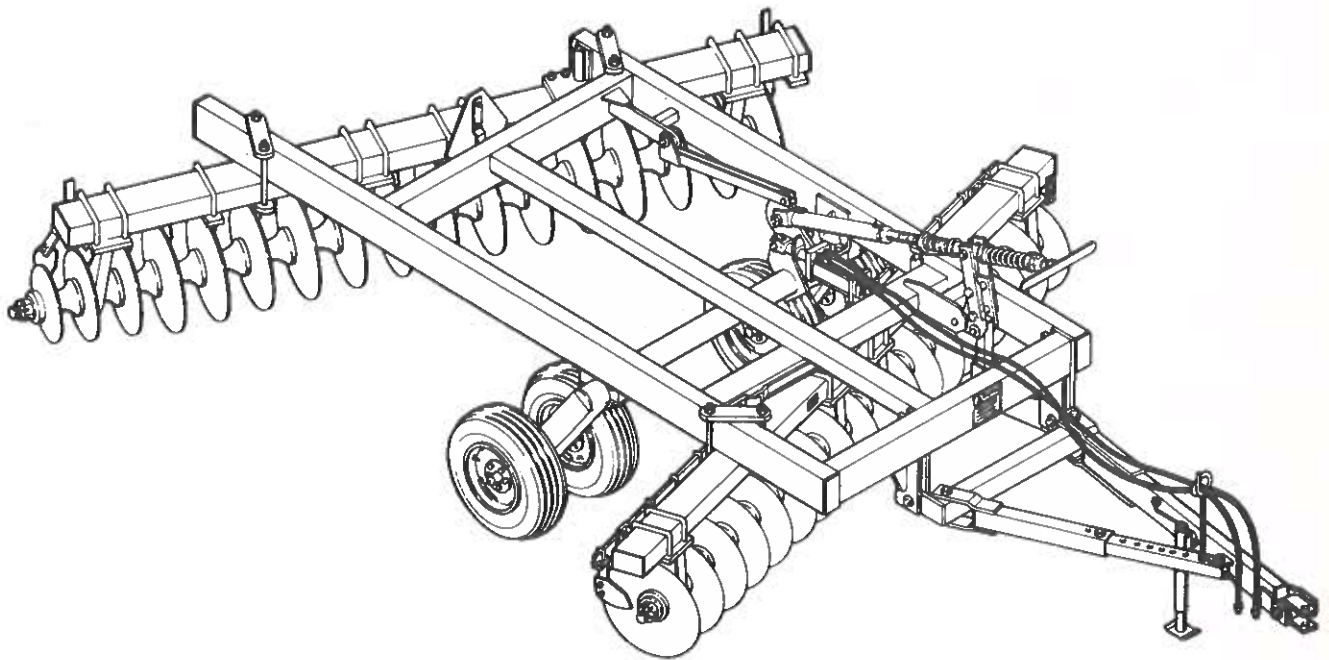


HUTCH MASTER

PARTS CATALOG

R.P.S. SERIES
10', 12', 14', & 16'



0105R3

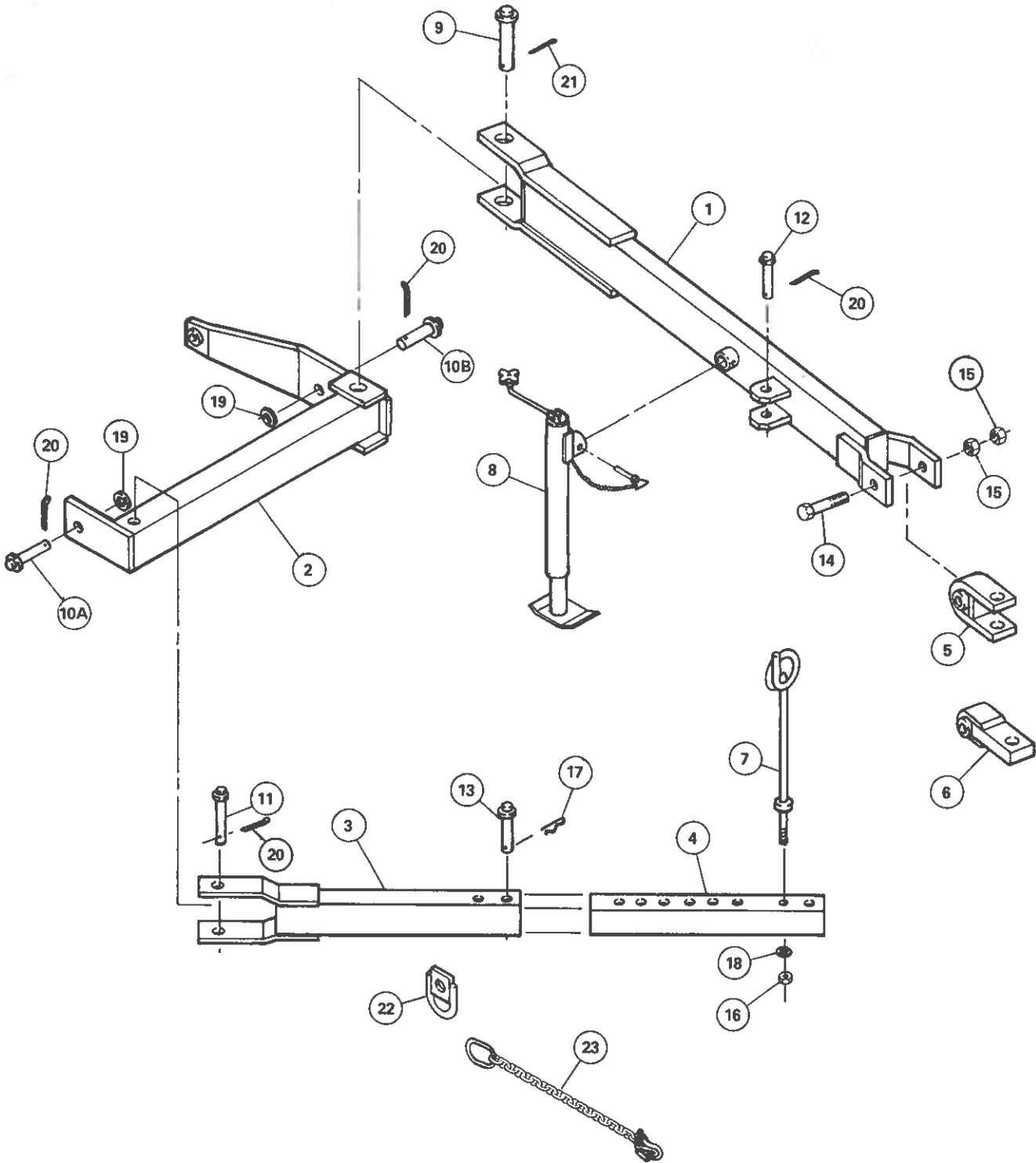
PRP-23-0483

 HUTCHINSON DIVISION
LEAR SIEGLER, INC.

913-632-2161
TWX 910-742-6411
514 West Crawford
Clay Center, Kansas 67432

RPS

HITCH

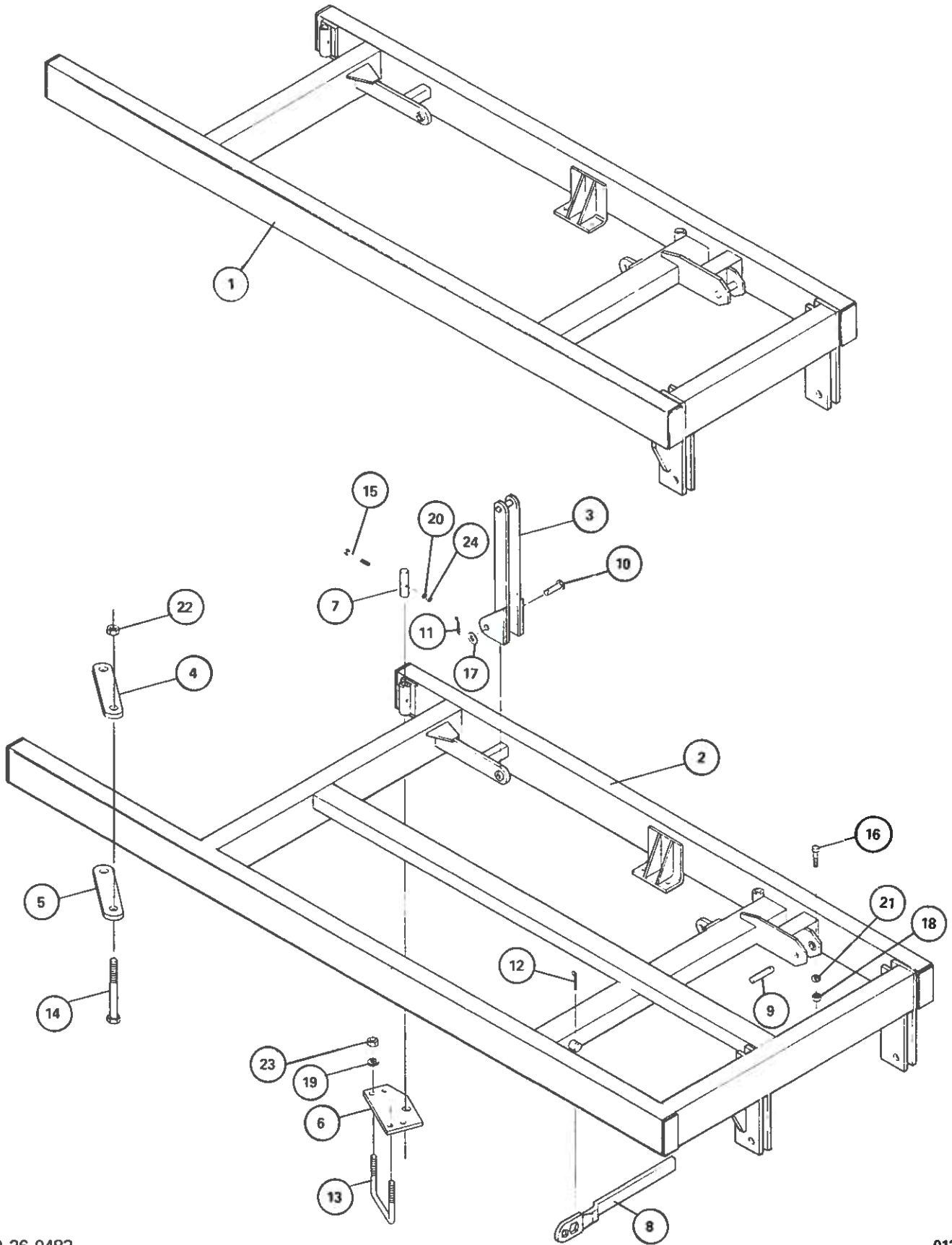


HITCH**RPS**

<u>REF. NO.</u>	<u>PART NO.</u>	<u>DESCRIPTION</u>
1	6119R1	Hitch, Main Tube
2	6117R1	Hitch, Frame and Leveling Tube
3	6118R1	Hitch, Adjustment Tube
4	5197R1	Hitch, Adjustment Member
5	6039R1	Hitch Clevis
6	D1182	Bar Type Hitch Clevis
7	D1067	Hose Carrier
8	40873	Jack
9	6016R1-N	Pin, 1 3/4" dia. x 9 3/4" long
10A	6016R1-L	Pin, 1 1/4" dia. x 3-5/8" long
10B	6016R1-F	Pin 1 1/4" dia. x 4-3/8" long
11	6016R1-K	Pin, 1" dia. x 7 1/2" long
12	6016R1-C	Pin, 1" dia. x 5 1/4" long
13	6016R1-B	Pin, 1" dia. x 4-3/8" long (yellow color)
14	3045R1	Bolt, 1 1/4" x 8" Hex Hd. Mach.
15	D1156	Nut, 1 1/4" Hex jam
16	D1169	Nut, 1/2" (non lock)
17	D1166	Spring clip #6
18	D1143	Washer, lock, 1/2"
19	D1164	Washer, flat, 1 1/4"
20	D1263	Cotter Pin, 1/4" x 2" long
21	D1165	Cotter Pin, 1/4" x 3" long
22	62497	Safety Chain Bracket (Optional)
23	40783	Safety Chain w/hook (Optional)

RPS

FRAME



PRP-26-0483

0132R2

FRAME**RPS**

<u>REF. NO.</u>	<u>PART NO.</u>	<u>DESCRIPTION</u>
1	6205R1	Frame for 10' RPS
2	6116R1	Frame for 12', 14' & 16' RPS
3	6203R1	Transport Lockout
4	D1183	Clamp Plate (top)
5	D1193	Clamp Plate (bottom)
6	5271R1	Pivot Base
7	5272R1	Pivot Pin
8	6045R1	RPS Gang Wrench for 1-3/4" Round Shaft
8	630060	RPS/20 Series Gang Wrench for 1-1/2" square shaft
9	5225R1	Pin (headless) 1" dia. x 5 1/2" long
10	6016R-B	Pin, 1" dia. x 4-3/8" long
11	D1263	Cotter Pin, 1/4" x 2" long
12	D1165	Cotter Pin, 1/4" x 3" long
13	D1194	U-bolt, 7/8" dia. x 8"
14	D1191	Bolt, 1 1/4" - 7 x 16" long
15	D1151	Bolt, 3/8" - 16 x 3" long
16	33050	Bolt, 5/16" - 18 x 2 1/4" long
17	D1160	Washer, flat, 1"
18	33151	Nut 5/16" non lock
19	D1231	Washer, lock, 7/8"
20	D1150	Washer, lock, 3/8"
21	33144	Washer, lock, 5/16"
22	D1229	Nut, 1 1/4" (non lock)
23	D1232	Nut, 7/8" (non lock)
24	D1149	Nut, 3/8" (non lock)

AXLE

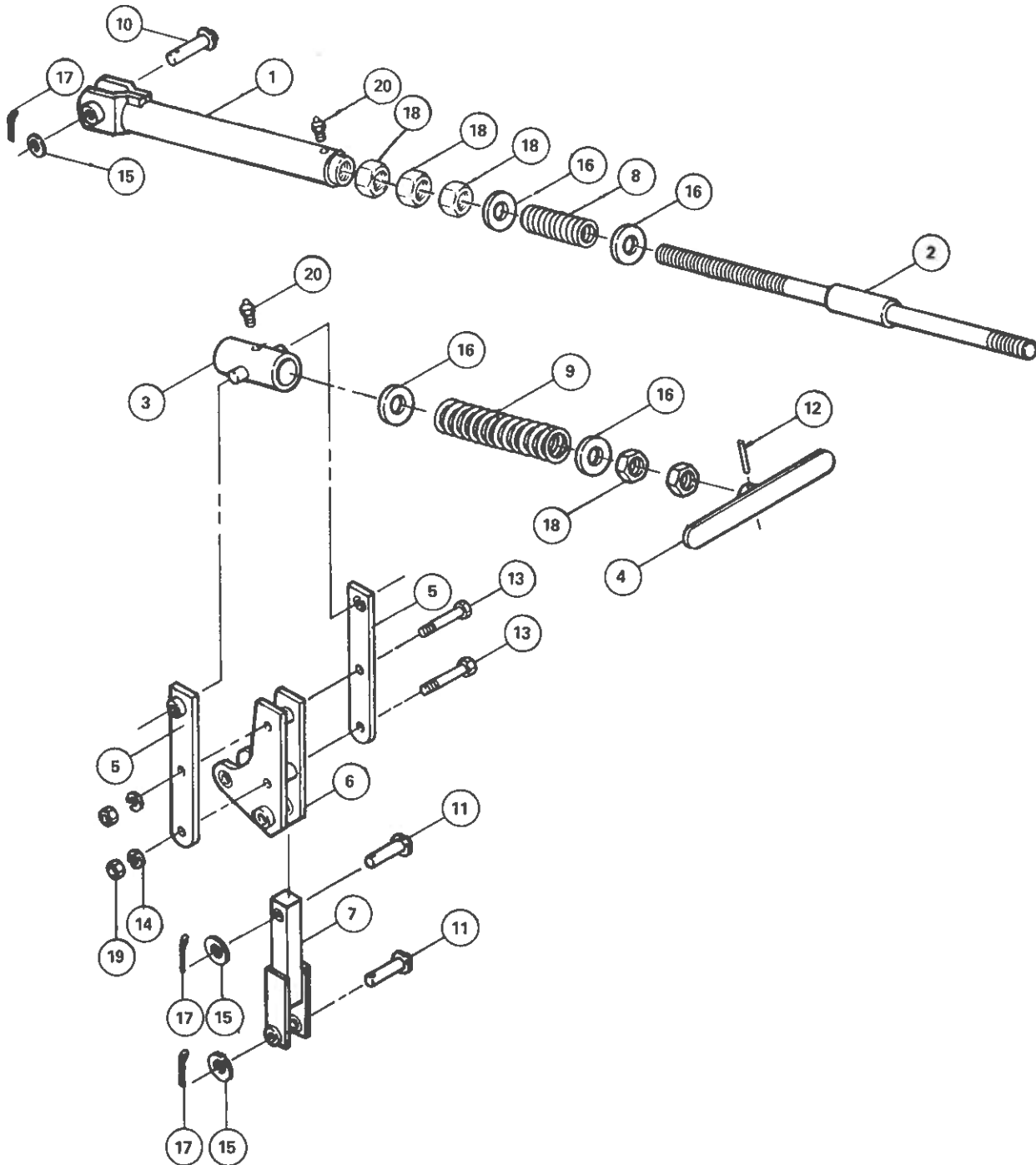
RPS

<u>REF. NO.</u>	<u>PART NO.</u>	<u>DESCRIPTION</u>
1	6206R1	Axle for 10' RPS
2	6123R1	Axle for 12', 14' & 16' RPS
3	4031R1	Axle Bearing Casting w/Zerk
4	D1016	Axle Bearing Clamp
5	5541R1	Bearing Shim, thin
5	5542R1	Bearing Shim, thick
6	4002R2	*Spindle, 1 3/4" x 12-1/8" long
7	D1072	*Seal, grease
8	3078R1	*Inside Bearing Cone (LM48548)
9	3079R1	*Outside Bearing Cone (LM67048)
10	D1251	*Hub Casting with Cups and grease zerk
--	3147R1	Inside bearing cup (LM48510)
--	3148R1	Outside bearing cup (LM67010)
11	D1148	*Washer, 2" O.D. x 7/8" I.D., flat
12	D1147	*Castle Nut, 7/8"
13	D1146	*Cotter Pin, 5/32" x 1 1/4" long
14	40588	*Dust Cap
15	D1253	Wheel Rim, 15" x 8" wide, 6 bolt
16	D1077	*Wheel Bolt, 1/2"
17	D1179	Bolt, 3/4" - 10 x 6 1/2" (grade 5)
18	D1151	Bolt, 3/8" - 16 x 3" long
19	D1153	Lock Washer, 3/4"
20	D1150	Lock Washer, 3/8"
21	D1152	Nut, 3/4" (non lock)
22	D1149	Nut, 3/8" (non lock)
23	3030A1	Grease Zerk, 1/4"
24	3005R91	1 3/4" Spindle and Hub Assembly (Consist of all parts marked by an asterisk)

5 bolt hub - 29212

RPS

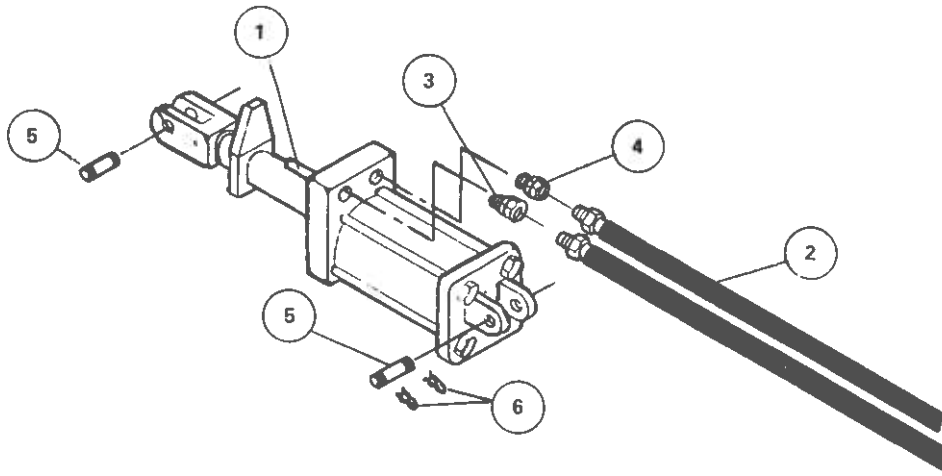
LEVELING LINKAGE



LEVELING LINKAGE**RPS**

<u>REF. NO.</u>	<u>PART NO.</u>	<u>DESCRIPTION</u>
1	6121R1	*Leveling Screw Connector
2	D1051	*1 1/4" Leveling Screw Shaft
3	6049R1	*Trunion
4	D1050	*Leveling Screw Handle
5	6046R1	Level Pivot Strap
6	6120R1	Leveling Pivot Plate
7	6122R1	Leveling Connector
8	D1082	*Leveling Screw Spring #2
9	D1081	*Leveling Screw Spring #1
10	6016R1-B	*Pin, 1" dia. x 4-3/8" long
11	6016R1-C	Pin, 1" dia. x 5 1/4" long
12	D1155	*Pin, roll, 5/16" dia. x 1 3/4" long
13	D1157	Bolt, 1" - 8 x 5 1/2" long
14	D1159	*Washer, lock, 1"
15	D1160	Washer, flat, 1"
16	D1052	*Spring Stop, washer 2 3/4" O.D.
17	D1263	*Cotter Pin, 1/4" x 2" long
18	D1156	*Nut, Jam, 1 1/4"
19	D1158	Nut, 1" (non lock)
20	3030A1	*Grease Zerk, 1/4"
	6121R11	Leveling Screw Assembly (consists of all parts marked by asterisk)

RPS HYDRAULIC CYLINDER & COMPONENTS

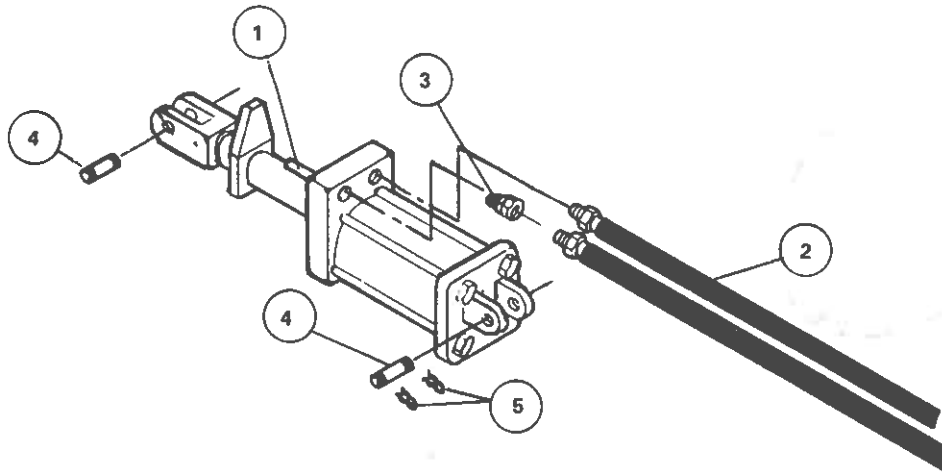


<u>REF. NO.</u>	<u>PART NO.</u>	<u>DESCRIPTION</u>
1	3030R91	*Hydraulic Cylinder 4" Bore x 8" Stroke with Internal Depth Control System, 1/2" o-ring ports.
2	3171R1	Hydraulic Hose 1/2" x 13'0" long
3	4017R1	Hydraulic Fitting, 3/16" flow restrictor
4	3100R1	Hydraulic Fitting, Adapter male to female
5	40751	Pin, 1"
6	40752	Spring Clip

* Parts breakdown for the 3030R91 4" Bore x 8" Stroke Cylinder are on pages 70 & 71.

HYDRAULIC CYLINDER & COMPONENTS

RPS

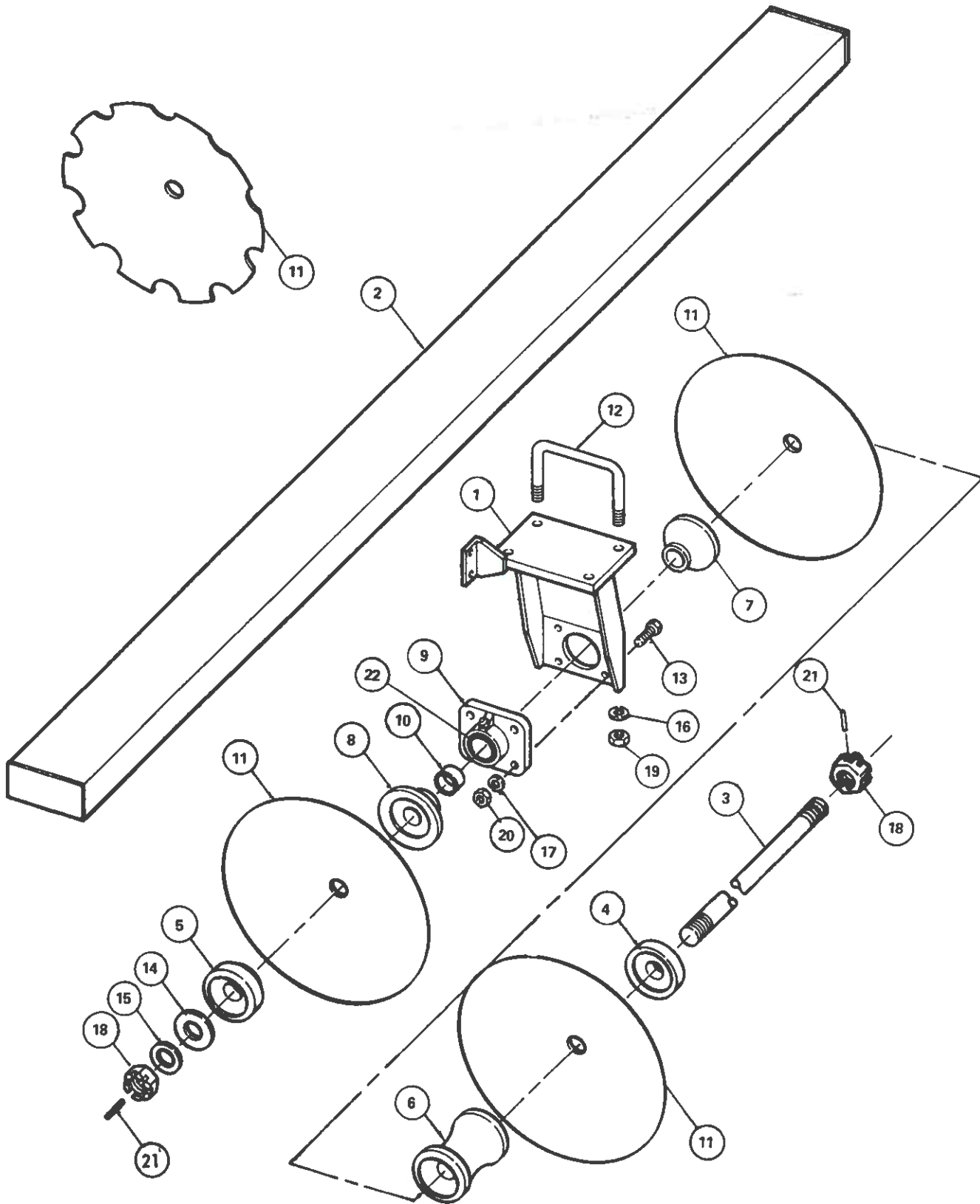


<u>REF. NO.</u>	<u>PART NO.</u>	<u>DESCRIPTION</u>
1	3030R91	*Hydraulic Cylinder 4" Bore x 8" Stroke with Internal Depth Control system 3/4"-16 SAE #8 o-ring ports.
2	41113	Hydraulic Hose 3/8" x 13'0" long
3	41114	Hydraulic Fitting, 3/16" flow restriction
4	40751	Clevis Pin 1"
5	40752	Spring Clip

*Parts Breakdown for the 3030R91 4" Bore x 8" Stroke Cylinder is on pages 70 & 71.

RPS

FRONT GANGS



FRONT GANGS

ROUND GANG SHAFT COMPONENTS

RPS

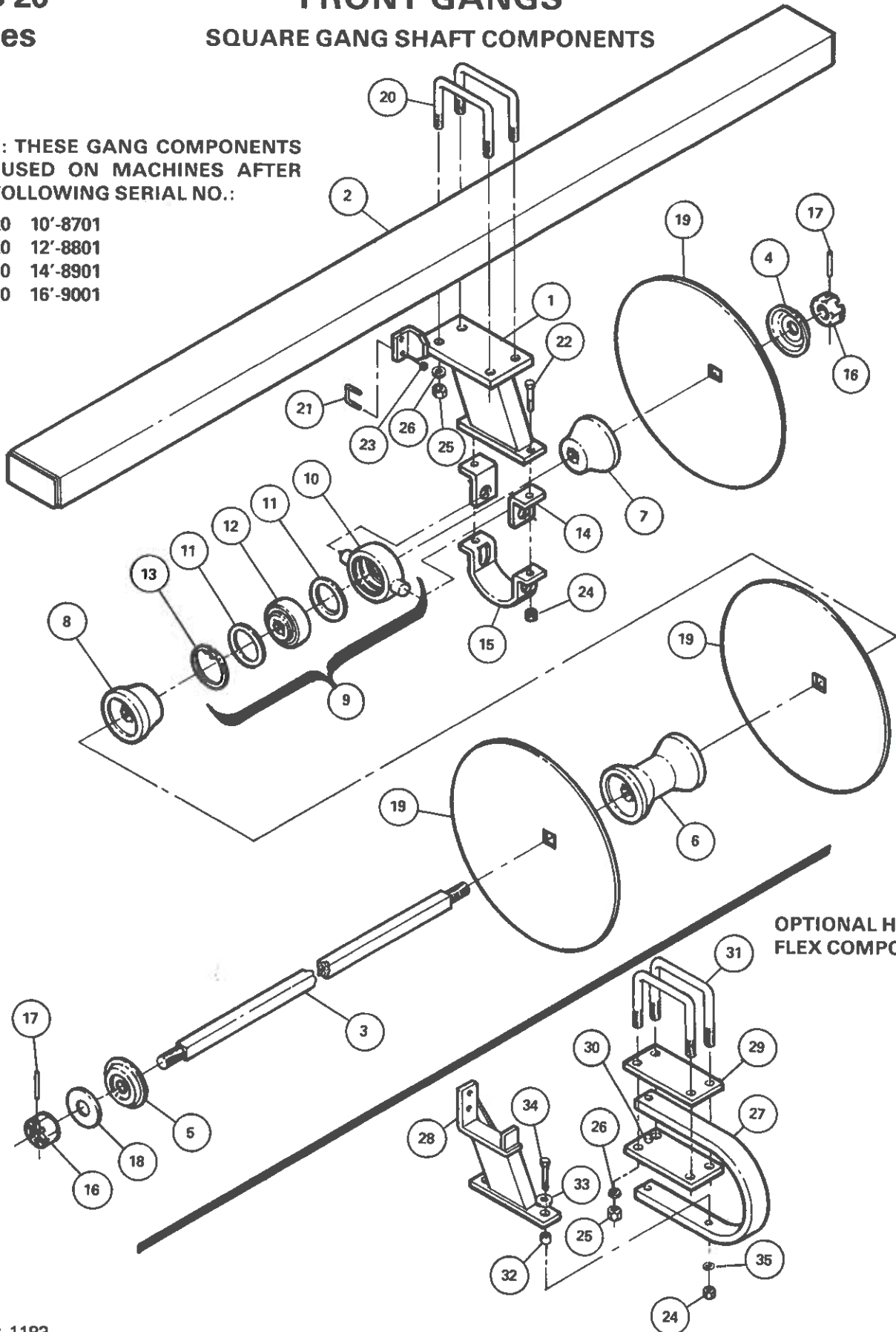
<u>REF.NO.</u>	<u>PART NO.</u>	<u>DESCRIPTION</u>
1	6240R1	Bearing Stand, Front Gang
2	D1139	Gang Beam, 10' 0" long for 10' RPS
2	D1128	Gang Beam, 12' 0" long for 12' 0" RPS
2	D1129	Gang Beam, 13' 6" long for 14' 0" RPS
2	D1131	Gang Beam, 15' 0" long for 16' 0" RPS
3	5424R1-J1	1 3/4" dia. Gang Shaft, 72" long
3	5424R1-L1	1 3/4" dia. Gang Shaft, 81 1/4" long
3	5424R1-M1	1 3/4" dia. Gang Shaft, 82 1/2" long
3	5424R1-P1	1 3/4" dia. Gang Shaft, 90 1/2" long
3	5424R1-Q1	1 3/4" dia. Gang Shaft, 93" long
3	5424R1-P2	1 3/4" dia. Gang Shaft, 118" long
3	5424R1-N2	1 3/4" dia. Gang Shaft, 114 1/2" long
4	D1012	End Cap
5	D1011	End Cap
6	D1009	Spool Casting, 9" long
6	D1010	Spool Casting, 10 1/2" long
7	D1004	Long Bearing Spool Half for 9" spacing
7	D1005	Long Bearing Spool Half for 10 1/2" spacing
8	D1013	Short Bearing Spool End Casting
9	3030R1	Heavy Duty Gang Bearing, 2-3/16"
10	D1014	Gang Shaft Bushing
11	D2084	26" Blade .250, 3 1/2" Concave
11	D2084N	26" Blade .250, 3 1/2" Concave with cut-out
11	D1284	24" Blade .250, 3" Concave
11	D1284N	24" Blade .250, 3" Concave with cut-out
11	D1084	24" Blade .203, 3" Concave
11	D1084N	24" Blade .203, 3" Concave with cut-out
12	D1194	8" U-bolt, 7/8"
13	33084	Bolt 1/2" - 13 x 2" long
14	D1173	Washer, flat, 1 3/4" (3/4" thick x 4" O.D.)
15	D1141	Washer, flat, 1 3/4"
16	D1231	Washer, lock, 7/8"
17	D1143	Washer, lock, 1/2"
18	D1145	Nut, slotted 1 3/4"
19	D1232	Nut, 7/8" (non lock)
20	D1169	Nut 1/2" (non lock)
21	D1192	Pin, roll, 5/16" dia. x 2-3/4" long
22	40304	Bearing Insert (can be ordered separately)

RPS 20 Series

FRONT GANGS SQUARE GANG SHAFT COMPONENTS

NOTE: THESE GANG COMPONENTS
ARE USED ON MACHINES AFTER
THE FOLLOWING SERIAL NO.:

- RPS 20 10'-8701
- RPS 20 12'-8801
- RPS 20 14'-8901
- RPS 20 16'-9001



OPTIONAL HUTCH-FLEX COMPONENTS

FRONT GANGS

SQUARE GANG SHAFT COMPONENTS

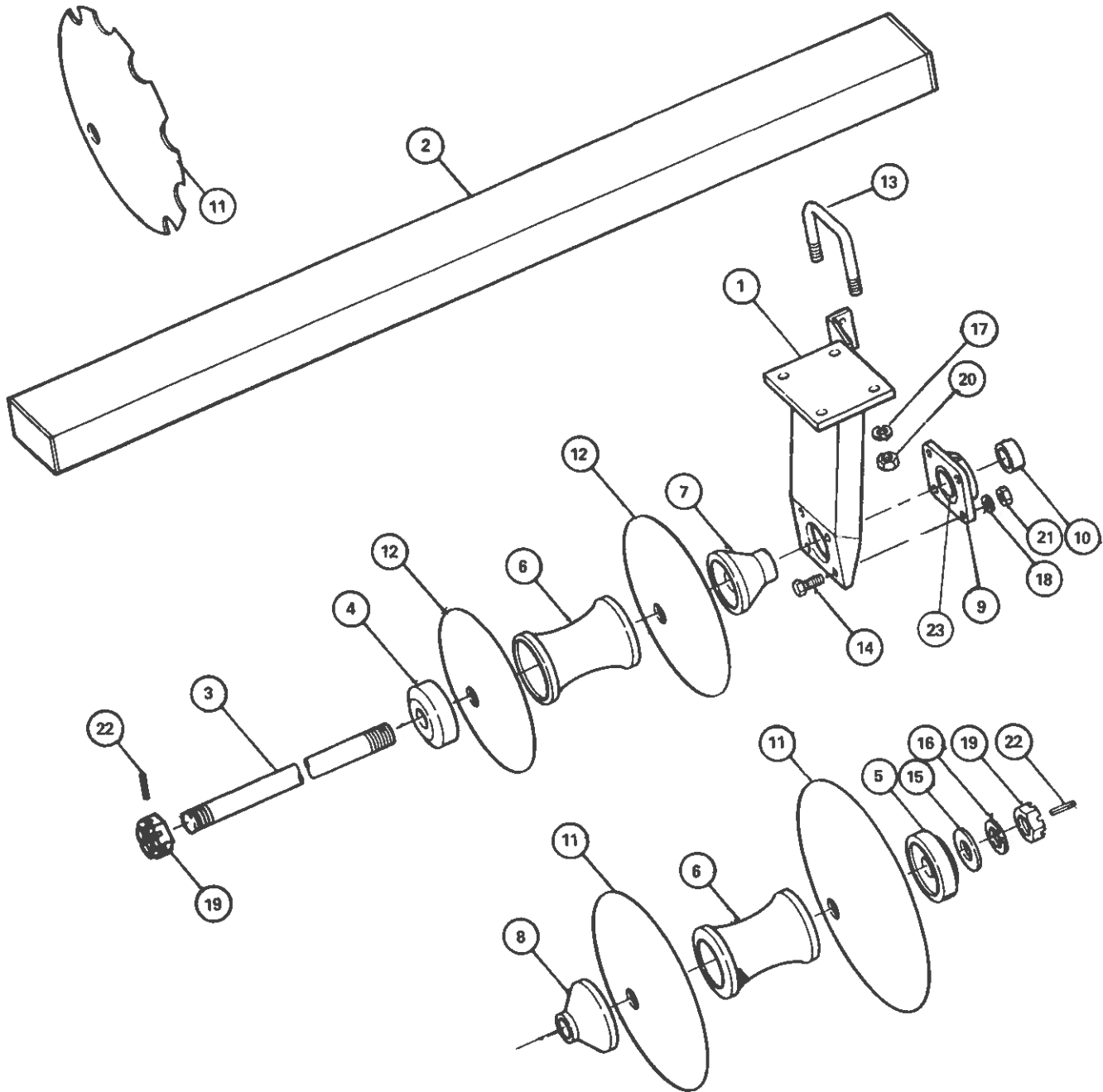
RPS 20

Series

REF. NO.	PART NO.	DESCRIPTION
1	630129	Front Bearing for Toggle Mount Bearing
2	D1139	Gang Beam, 10' 0" for 10' RPS
2	D1128	Gang Beam, 12' 0" long
2	D1129	Gang Beam, 13' 6" long
2	D1131	Gang Beam, 15' 0" long
3	5619R1-E	1-1/2" Square Gang Shaft 79-1/2" long
3	5619R1-D	1-1/2" Square Gang Shaft 70-1/4" long <i>24479</i>
3	52313	1-1/2" Square Gang Shaft 91-1/2" long
3	52315	1-1/2" Square Gang Shaft 113" long
3	5619R1-J	1-1/2" Square Gang Shaft 116" long
4	3163R1	Spring End Gang Washer
5	3163R1	Spring End Gang Washer
6	4038R2	9" Gang Spool Casting
6	40267	10-1/2" Gang Spool Casting
7	40265	Long Bearing Spool Casting for 9" Spacing <i>5"</i>
7	40266	Long Bearing Spool Casting for 10-1/2" Spacing <i>7 1/2"</i>
8	40263	Short Bearing Spool Casting <i>4 1/4"</i>
9	3045R91	Toggle Bearing and Casting Assembly (consists of Ref. No. 10, 11, 12 & 13)
10	3182R1	Toggle Bearing Casting
11	3200R1	Toggle Bearing Washer
12	3181R1	Toggle Bearing Insert w/Square Hole (1-1/2")
13	3183R1	Toggle Bearing Retaining Ring
14	54397	Bearing Clamp Clip
15	54398	Bearing Clamp
16	3013R1	1-1/2" Nut, Hex Heavy Slotted
17	3180R1	Roll Pin 5/16" x 2-1/4" long
18	5598R1	1-9/16" I.D. x 3" O.D. x 1/4" Gang Washer
19	41047	Disk Blade 26" x 3.0" Conc. x 1/4" Smooth - Front
19	40704	Disk Blade 26" x 3.0" Conc. x 1/4" Notch - Front
19	3170R1	Disk Blade 24" x 3.0" Conc. 1/4" Smooth - Front
19	3185R1	Disk Blade 24" x 3.0" Conc. x 1/4" Notch - Front
19	41308	Disk Blade 24" x 3.0" Conc. x 6 Ga. Smooth - Front
19	41309	Disk Blade 24" x 3.0" Conc. x 6 Ga. Notch - Front
19	3184R1	Disk Blade 22" x 2.5" Conc. x 1/4" Smooth
19	3207R1	Disk Blade 22" x 2.5" Conc, Smooth
19	3201R1	Disk Blade 20" x 2.0" Conc. x 1/4" Smooth
19	3202R1	Disk Blade 20" x 2.0" Conc. x 1/4" Notch
19	3203R1	Disk Blade 18" x 1.75" Conc. x 6 Ga. Smooth
19	3204R1	Disk Blade 18" x 1.75" Conc. x 6 Ga. Notch
20	D1194	U-Bolt 7/8" x 8" Spread
21	D1061	U-Bolt for Scraper Bar
22	33112	Bolt 3/4" x 3" long (Grade 5)
23	33202	Lock Nut 1/2" (Nylon)
24	33218	Lock Nut 3/4" (Nylon)
25	D1232	Nut (non-lock) 7/8"
26	D1231	Lock Washer 7/8"
OPTIONAL HUTCH FLEX COMPONENTS		
27	40607	Spring Shank for Rolling Plow
28	62434	Scraper Bar Bracket Weldment
30	53457	Top Clamp Plate
31	62308	Bottom Bearing Shank Saddle
32	5646R1	Pivot Bushing (1" O.D. x 3/4" long)
33	33207	Flat Washer 3/4"
34	33277	Bolt 3/4" x 4-1/2" long (Grade 5)
35	D1153	Lock Washer 3/4"

RPS

REAR GANGS ROUND GANG SHAFT COMPONENTS



REAR GANGS

ROUND GANG SHAFT COMPONENTS

RPS

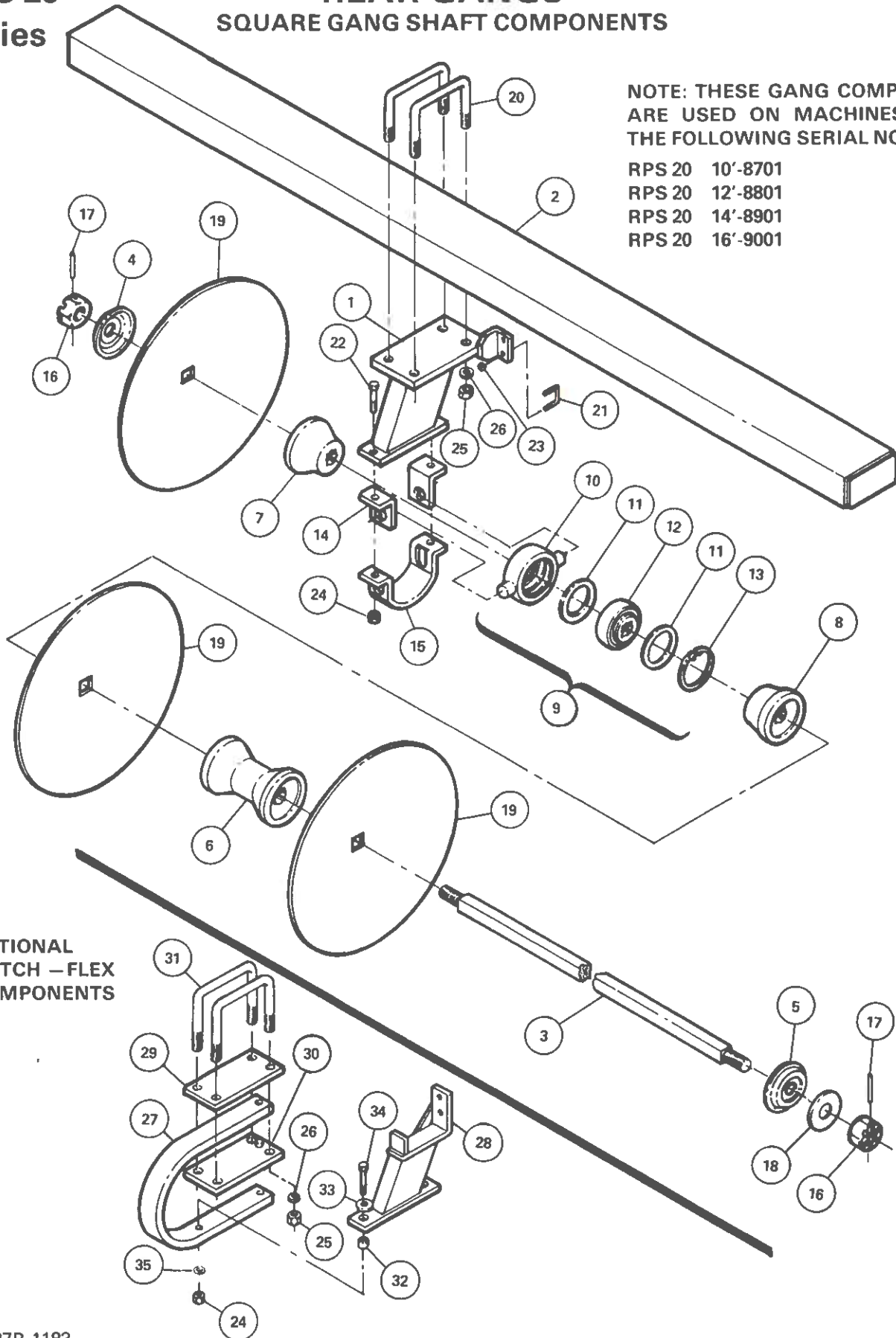
<u>REF. NO.</u>	<u>PART NO.</u>	<u>DESCRIPTION</u>
1	6241R1	Bearing Stand, Rear Gang
2	D1139	Gang Beam, 10' long for 10' RPS
2	D1128	Gang Beam, 12' long for 12' RPS
2	D1130	Gang Beam, 14' long for 14' RPS
2	D1132	Gang Beam, 16' long for 16' RPS
3	5424R1-J1	1 3/4" dia. Gang Shaft, 72" long
3	5424R1-L1	1 3/4" dia. Gang Shaft, 81 1/4" long
3	5424R1-M1	1 3/4" dia. Gang Shaft, 82 1/2" long
3	5424R1-P1	1 3/4" dia. Gang Shaft, 90 1/2" long
3	5424R1-Q1	1 3/4" dia. Gang Shaft, 93" long
3	5424R1-J2	1 3/4" dia. Gang Shaft, 99 3/4" long
3	5424R1-K2	1 3/4" dia. Gang Shaft, 103 1/2" long
3	5424R1-J3	1 3/4" dia. Gang Shaft, 127" long
3	5424R1-R2	1 3/4" dia. Gang Shaft, 125" long
3	5424R1-R1	1 3/4" dia. Gang Shaft, 98" long
4	D1012	End Cap
5	D1011	End Cap
6	D1009	Spool Casting, 9" long
6	D1010	Spool Casting, 10 1/2" long
7	D1004	Long Bearing Spool Half for 9" spacing
7	D1005	Long Bearing Spool Half for 10 1/2" spacing
8	D1013	Short Bearing Spool End Casting
9	3030R1	Heavy Duty Gang Bearing, 1-3/16"
10	D1014	Gang Shaft Bushing
11	D2086	26" Blade .250, 4" Concave
11	D2086N	26" Blade .250, 4" Concave with cut-out
11	D1286	24" Blade .250, 3 3/4" Concave
11	D1286N	24" Blade .250, 3 3/4" Concave with cut-out
11	D1086	24" Blade .203, 3 3/4" Concave
11	D1086N	24" Blade .203, 3 3/4" Concave with cut-out
11	D1087	22" Blade .180, 3 3/4" Concave
11	D1087N	22" Blade .180, 3 3/4" Concave with cut-out
12	3159R1	20" Blade 6 ga., 2" Concave
12	3160R1	20" Blade, 6 ga., 2" Concave with cut-out
12	D1089	18" Blade .148, 1 3/4" Concave
12	D1089N	18" Blade .148, 1 3/4" Concave with cut-out
12	D1090	16" Blade .148, 1 1/2" Concave
13	D1194	8" U-bolt - 7/8"
14	33084	Bolt 1/2" - 13 x 2" long
15	D1173	Washer flat, 1 3/4" (3/4" thick x 4" O.D.)
16	D1141	Washer, flat, 1 3/4"
17	D1231	Washer, lock, 7/8"
18	D1143	Washer, lock, 1/2"
19	D1145	Nut, slotted, 1 3/4"
20	D1232	Nut, 7/8"
21	D1169	Nut, 1/2"
22	D1192	Pin, roll, 5/16" dia. x 2 3/4" long
23	40304	Bearing Insert (can be ordered separately)

RPS 20 Series

REAR GANGS SQUARE GANG SHAFT COMPONENTS

NOTE: THESE GANG COMPONENTS ARE USED ON MACHINES AFTER THE FOLLOWING SERIAL NO.:

- RPS 20 10'-8701
- RPS 20 12'-8801
- RPS 20 14'-8901
- RPS 20 16'-9001



OPTIONAL HUTCH - FLEX COMPONENTS

REAR GANGS

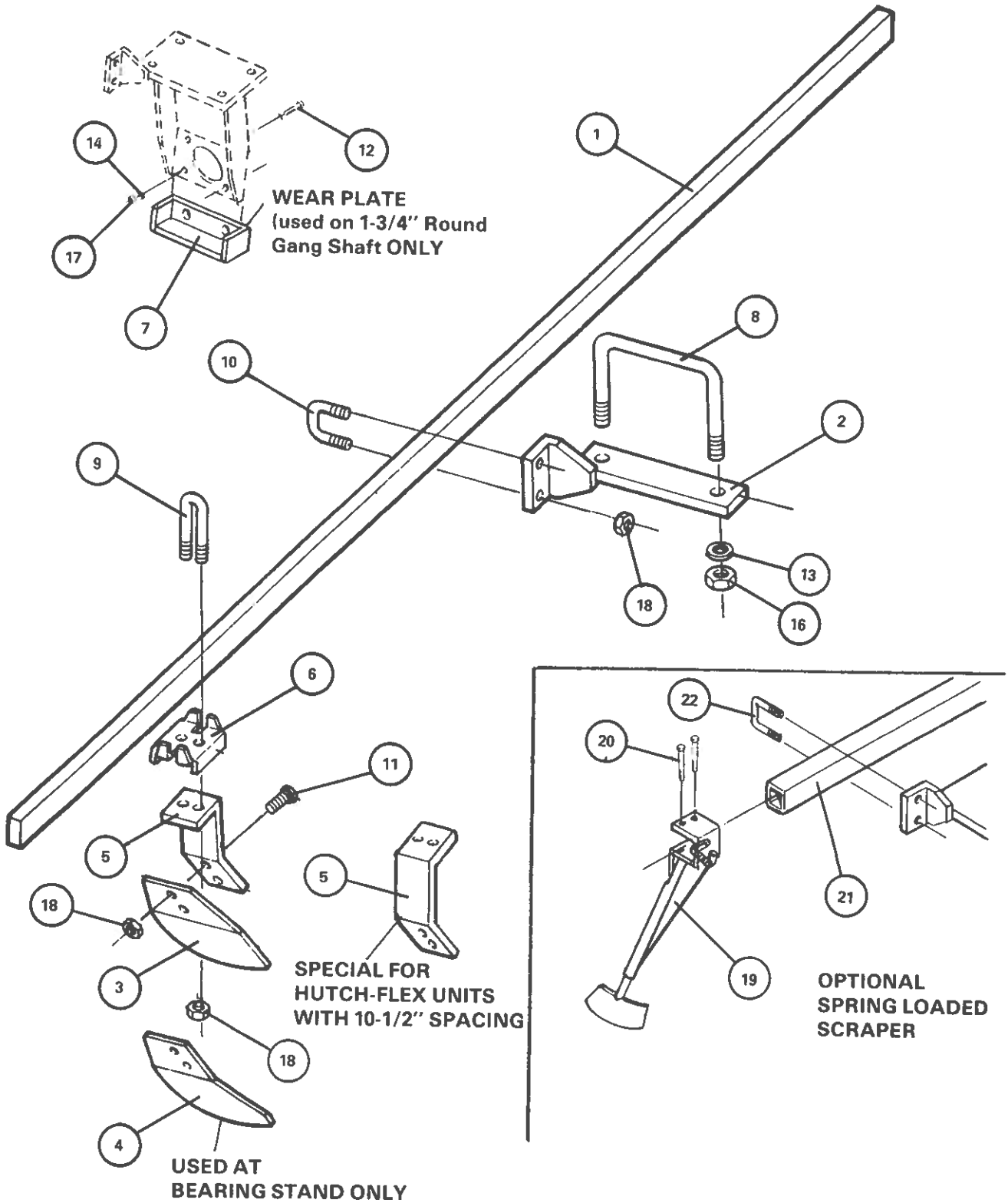
RPS

SQUARE GANG SHAFT COMPONENT

REF. NO.	PART NO.	DESCRIPTION
1	630128	Rear Bearing Stand for Toggle Mount Bearing
2	D1139	Gang Beam, 10' long for 10' RPS
2	D1128	Gang Beam, 12' long for 12' RPS
2	D1130	Gang Beam, 14' long for 14' RPS
2	D1132	Gang Beam, 16' long for 16' RPS
3	5619R1-D	1-1/2" Square Gang Shaft 70-1/4" long
3	5619R1-E	1-1/2" Square Gang Shaft 79-3/4" long
3	52317	1-1/2" Square Gang Shaft 81" long
244 74 → 3	5619R1-F	1-1/2" Square Gang Shaft 88-1/2" long
3	52313	1-1/2" Square Gang Shaft 91-1/4" long
1145 → 3	5619R1-G	1-1/2" Square Gang Shaft 97-3/4" long
3	52314	1-1/2" Square Gang Shaft 102-1/4" long
3	52316	1-1/2" Square Gang Shaft 123-1/2" long
3	50718	1-1/2" Square Gang Shaft 125" long
4	3163R1	Spring End Gang Washer
5	3163R1	Spring End Gang Washer
6	4038R2	9" Gang Spool Casting
6	40267	10-1/2" Gang Spool Casting
7	40265	Long Bearing Spool Casting for 9" Spacing
7	40266	Long Bearing Spool Casting for 10-1/2" Spacing
8	40263	Short Bearing Spool Casting
9	3045R91	Toggle Bearing and Casting Assembly (consists of Ref. No. 10, 11, 12 & 13)
10	3182R1	Toggle Bearing Casting
11	3200R1	Toggle Bearing Washer
12	3181R1	Toggle Bearing Insert w/Square Hole (1-1/2")
13	3183R1	Toggle Bearing Retaining Ring
14	54397	Bearing Clamp Clip
15	54398	Bearing Clamp
16	3013R1	1-1/2" Nut, Hex Heavy Slotted
17	3180R1	Roll Pin 5/16" x 2-1/4" long
18	5598R1	1-9/16" I.D. x 3" O.D. x 1/4" Gang Washer
19	40605	Disk Blade 26" x 3.5" Conc. x 1/4" Smooth - Rear
19	41451	Disk Blade 26" x 3.5" Conc. x 1/4" Notch - Rear
19	40604	Disk Blade 24" x 3.69" Conc. x 1/4" Smooth - Rear
19	41455	Disk Blade 24" x 3.69" Conc. x 1/4" Notch - Rear
19	41452	Disk Blade 24" x 3.69" Conc. x 6 Ga. Smooth - Rear
19	41454	Disk Blade 24" x 3.69" Conc. x 6 Ga. Notch - Rear
19	3184R1	Disk Blade 22" x 2.5" Conc. x 1/4" Smooth
19	3207R1	Disk Blade 22" x 2.5" Conc. x 1/4" Smooth - Notched
19	3201R1	Disk Blade 20" x 2.0" Conc. x 1/4" Smooth
19	3202R1	Disk Blade 20" x 2.0" Conc. x 1/4" Notch
19	3203R1	Disk Blade 18" x 1.75" Conc. x 6 Ga. Smooth
19	3204R1	Disk Blade 18" x 1.75" Conc. x 6 Ga. Notch
20	D1194	U-Bolt 7/8" x 8" Spread
21	D1061	U-Bolt for Scraper Bar
22	33112	Bolt 3/4" x 3" long (Grade 5)
23	33202	Lock Nut 1/2" (Nylon)
24	33218	Lock Nut 3/4" (Nylon)
25	D1232	Nut (non-lock) 7/8"
26	D1231	Lock Washer 7/8"
OPTIONAL HUTCH FLEX COMPONENTS		
27	40607	Spring Shank for Rolling Plow
28	62434	Scraper Bar Bracket Weldment
29	53457	Top Clamp Plate
31	62308	Bottom Bearing Shank Saddle
32	5646R1	Pivot Bushing (1" O.D. x 3/4" long)
33	33027	Flat Washer 3/4"
34	33277	Bolt 3/4" x 4-1/2" long (Grade 5)
35	D1153	Lock Washer 3/4"

RPS

GANG COMPONENTS



GANG COMPONENTS**RPS**

<u>REF. NO.</u>	<u>PART NO.</u>	<u>DESCRIPTION</u>
1	D1126	Scraper Bar, 9'9-1/2" long
1	D1127	Scraper Bar, 10'4" long
1	D1114	Scraper Bar, 11'10" long
1	D1115	Scraper Bar, 12'10" long
1	5199R1	Scraper Bar, 13'8" long
1	D1117	Scraper Bar, 14'8" long
1	D1118	Scraper Bar, 15'4" long
1	D1119	Scraper Bar, 16'5" long
2	D1018	Scraper Bar Bracket (use on rigid bearing stand only)
3	D1254	Scraper Blade
4	D1256	Scraper Blade (at bearing stand)
5	D1244	Scraper Arm
5	53870	Special scraper arm for Hutch-Flex with 9" spacing at the bearing stand only
5	53868	Special scraper arm for Hutch-Flex with 10-1/2" spacing at the bearing stand only
6	5425R1	Scraper Clip
7	6092R1	Bearing Stand Wear Plate (specify hole size for bolts when ordering)
8	D1059	8" U-bolt, 3/4"
9	D1061	1/2" U-bolt; for scraper arm clip
10	D1048	1/2" U-bolt; for scraper bar
11	D1255	Bolt, 1/2" - 13 x 1 1/2" carriage
12	33251	Bolt, socket flat head, 1/2" - 13 x 2 1/2"
13	D1153	Washer, lock, 3/4"
14	D1143	Washer lock 1/2"
16	D1152	Nut, 3/4" (non lock)
17	D1169	Nut, 1/2" (non lock)
18	33202	Nylock Nut, 1/2"
OPTIONAL SPRING LOADED SCRAPER		
19	40653	"Walker" spring loaded scraper
20	D1151	Bolt 3/8" x 3" HHCS
21	550194	Special scraper bar (2" x 2" sq. tubing) 9' 9-1/2" long
21	550195	Special scraper bar (2" x 2" sq. tubing) 10' 4" long
21	550196	Special scraper bar (2" x 2" sq. tubing) 11' 10" long
21	550198	Special scraper bar (2" x 2" sq. tubing) 12' 10" long
21	550199	Special scraper bar (2" x 2" sq. tubing) 13' 8" long
21	550200	Special scraper bar (2" x 2" sq. tubing) 14' 8" long
21	550201	Special scraper bar (2" x 2" sq. tubing) 15' 4" long
21	550202	Special scraper bar (2" x 2" sq. tubing) 16' 5" long
22	33240	U-Bolt 1/2" dia. x 2-1/8" spread w/3-1/4" long legs

*NOTE: A special scraper bar is required to mount spring loaded scrapers

10' RPS**GANG INFORMATION****Front Gang — 9" Spacing**

TOTAL BLADES - 13

SCRAPER BAR - 9' 9-1/2" Long

1-3/4" ROUND GANG SHAFT - 118" Long

1-1/2" SQUARE GANG SHAFT - 116" Long

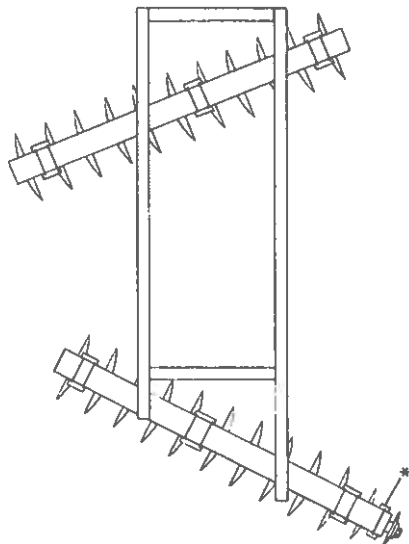
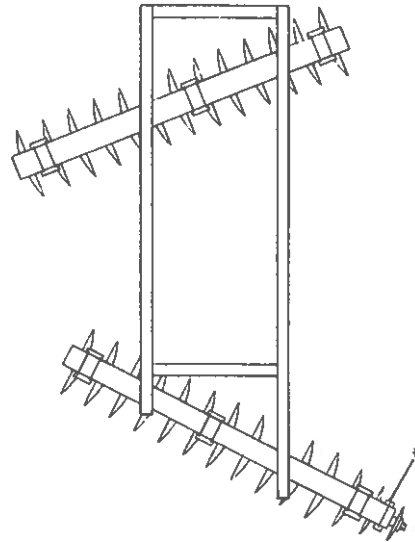
Rear Gang — 9" Spacing

TOTAL BLADES - 14

SCRAPER BAR - 10' 4" Long

1-3/4" ROUND GANG SHAFT - 127" Long

1-1/2" SQUARE GANG SHAFT - 125" Long

**Front Gang — 10-1/2" Spacing**

TOTAL BLADES - 11

SCRAPER BAR - 9' 9-1/2" Long

1-3/4" ROUND GANG SHAFT - 114-1/2" Long

1-1/2" SQUARE GANG SHAFT - 113" Long

Rear Gang — 10-1/2" Spacing

TOTAL BLADES - 12

SCRAPER BAR - 10' 4" Long

1-3/4" ROUND GANG SHAFT - 125" Long

1-1/2" SQUARE GANG SHAFT - 123-1/2" Long

NOTE: * Indicates location of scraper bar bracket used when unit is equipped with rigid bearing stands. These brackets are not needed on units equipped with Hutch-Flex bearing stands.

GANG INFORMATION**12' RPS****Front Gang — 9" Spacing**

TOTAL BLADES - 16

SCRAPER BAR - 11' 10" Long

TWO 1-3/4" ROUND GANG SHAFTS

LEFT: - 72" Long

RIGHT: - 72" Long

TWO 1-1/2" SQUARE GANG SHAFTS

LEFT: - 70-1/4" Long

RIGHT: - 70-1/4" Long

Rear Gang — 9" Spacing

TOTAL BLADES - 17

SCRAPER BAR - 12' 10" Long

TWO 1-3/4" ROUND GANG SHAFTS

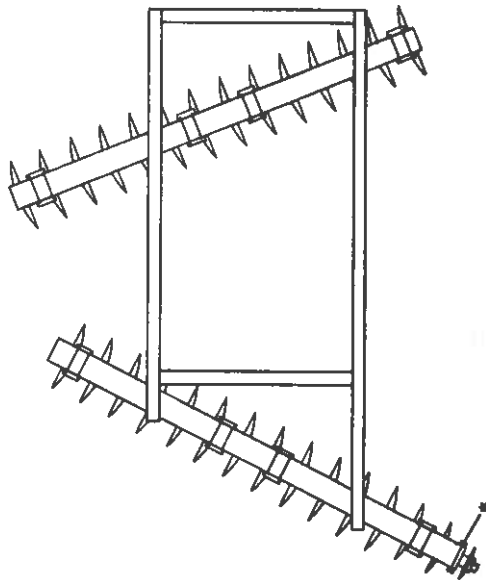
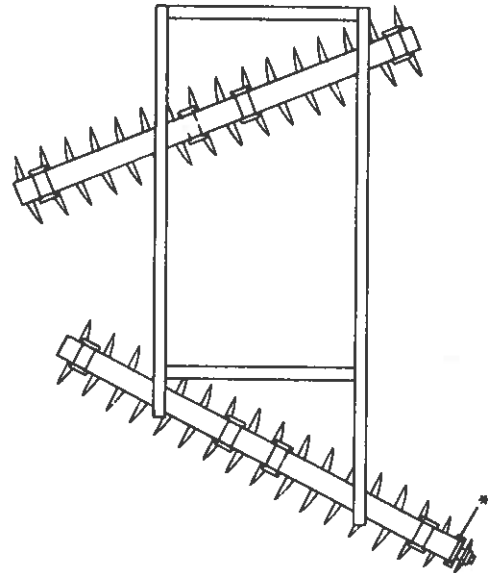
LEFT: - 72" Long

RIGHT: - 81-1/4" Long

TWO 1-1/2" SQUARE GANG SHAFTS

LEFT: - 70-1/4"

RIGHT: - 79-1/2"

**Front Gang — 10-1/2" Spacing**

TOTAL BLADES - 14

SCRAPER BAR - 11' 10" Long

TWO 1-3/4" ROUND GANG SHAFTS

LEFT: - 72" Long

RIGHT: - 72" Long

TWO 1-1/2" SQUARE GANG SHAFTS

LEFT: - 70-1/4" Long

RIGHT: - 70-1/4" Long

Rear Gang — 10-1/2" Spacing

TOTAL BLADES - 15

SCRAPER BAR - 12' 10" Long

TWO 1-3/4" ROUND GANG SHAFTS

LEFT: - 72" Long

RIGHT: - 82-1/2" Long

TWO 1-1/2" SQUARE GANG SHAFTS

LEFT: - 70-1/4" Long

RIGHT: - 81" Long

NOTE: * Indicates location of scraper bar bracket used when unit is equipped with rigid bearing stands. These brackets are not needed on units equipped with Hutch-Flex bearing stands.

14' RPS**GANG INFORMATION****Front Gang — 9" Spacing**

TOTAL BLADES - 18

SCRAPER BAR - 13' 8" Long

TWO 1-3/4" ROUND GANG SHAFTS

LEFT: - 81-1/4" Long

RIGHT: - 81-1/4" Long

TWO 1-1/2" SQUARE GANG SHAFTS

LEFT: - 79-1/2" Long

RIGHT: - 79-1/2" Long

Rear Gang — 9" Spacing

TOTAL BLADES - 19

SCRAPER BAR - 14' 8" Long

TWO 1-3/4" ROUND GANG SHAFTS

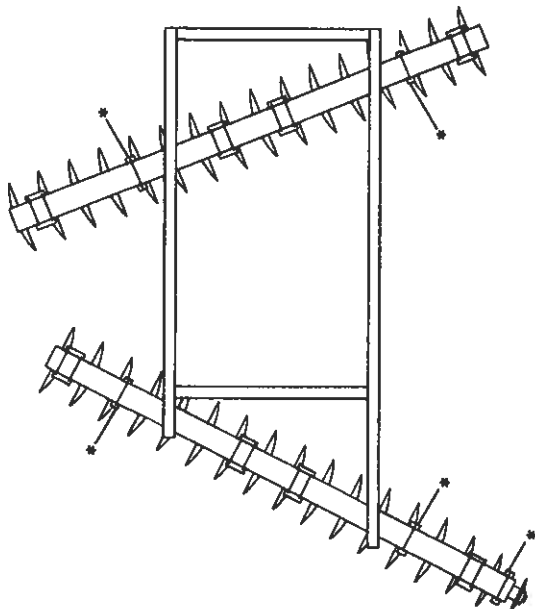
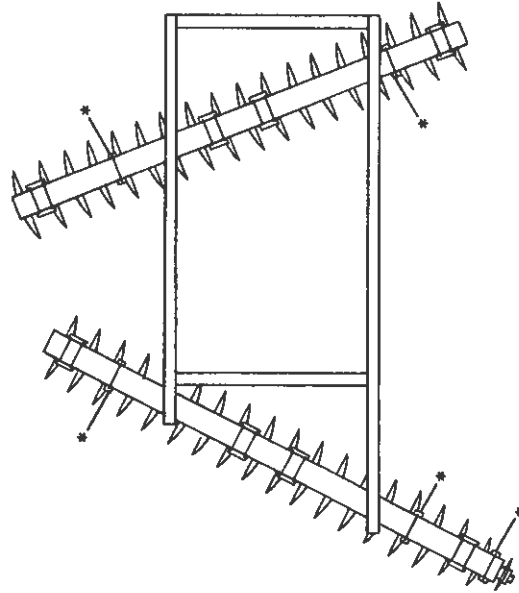
LEFT: - 81-1/4" Long

RIGHT: - 90-1/2" Long

TWO 1-1/2" SQUARE GANG SHAFTS

LEFT: - 79-1/2" Long

RIGHT: - 88-1/2" Long

**Front Gang — 10-1/2" Spacing**

TOTAL BLADES - 16

SCRAPER BAR - 13' 8" Long

TWO 1-3/4" ROUND GANG SHAFTS

LEFT: - 82-1/2" Long

RIGHT: - 82-1/2" Long

TWO 1-1/2" SQUARE GANG SHAFTS

LEFT: - 81" Long

RIGHT: - 81" Long

Rear Gang — 10-1/2" Spacing

TOTAL BLADES - 17

SCRAPER BAR - 14' 8" Long

TWO 1-3/4" ROUND GANG SHAFTS

LEFT: - 82-1/2" Long

RIGHT: - 93" Long

TWO 1-1/2" SQUARE GANG SHAFTS

LEFT: - 81" Long

RIGHT: - 91-1/2" Long

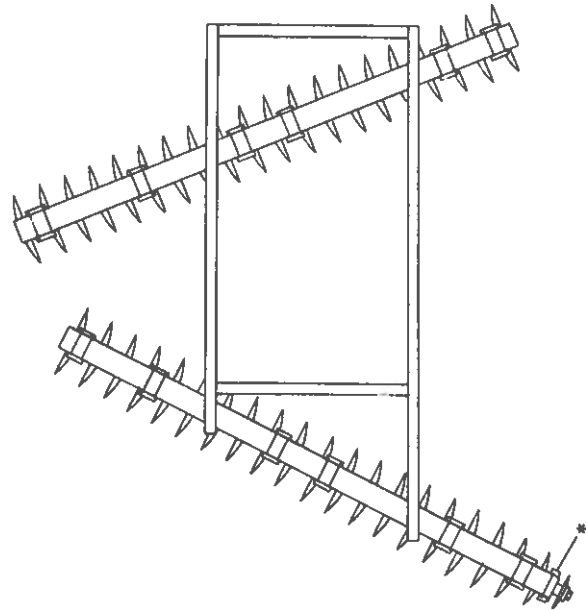
NOTE: * Indicates location of scraper bar bracket used when unit is equipped with rigid bearing stands. These brackets are not needed on units equipped with Hutch-Flex bearing stands.

GANG INFORMATION

16' RPS

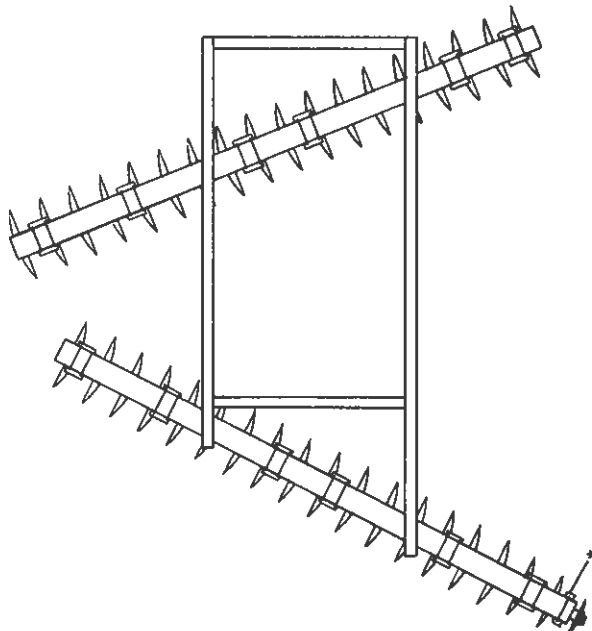
Front Gang — 9" Spacing

- TOTAL BLADES - 20
- SCRAPER BAR - 15' 4" Long
- TWO 1-3/4" ROUND GANG SHAFTS
 - LEFT: - 90-1/2" Long
 - RIGHT: - 90-1/2" Long
- TWO 1-1/2" SQUARE GANG SHAFTS
 - LEFT: - 88-1/2" Long
 - RIGHT: - 88-1/2" Long



Rear Gang — 9" Spacing

- TOTAL BLADES - 21
- SCRAPER BAR - 16' 5" Long
- TWO 1-3/4" ROUND GANG SHAFTS
 - LEFT: - 90-1/2" Long
 - RIGHT: - 99-3/4" Long
- TWO 1-1/2" SQUARE GANG SHAFTS
 - LEFT: - 88-1/2" Long
 - RIGHT: - 97-3/4" Long



Front Gang — 10-1/2" Spacing

- TOTAL BLADES - 18
- SCRAPER BAR - 15' 4" Long
- TWO 1-3/4" ROUND GANG SHAFTS
 - LEFT: - 93" Long
 - RIGHT: - 93" Long
- TWO 1-1/2" SQUARE GANG SHAFTS
 - LEFT: - 91-1/2" Long
 - RIGHT: - 91-1/2" Long

Rear Gang — 10-1/2" Spacing

- TOTAL BLADES - 19
- SCRAPER BAR - 16' 5" Long
- TWO 1-3/4" ROUND GANG SHAFTS
 - LEFT: - 93" Long
 - RIGHT: - 103-1/2" Long
- TWO 1-1/2" SQUARE GANG SHAFTS
 - LEFT: - 91-1/2" Long
 - RIGHT: - 102-1/4" Long

NOTE: * Indicates location of scraper bar bracket used when unit is equipped with rigid bearing stands. These brackets are not needed on units equipped with Hutch-Flex bearing stands.

