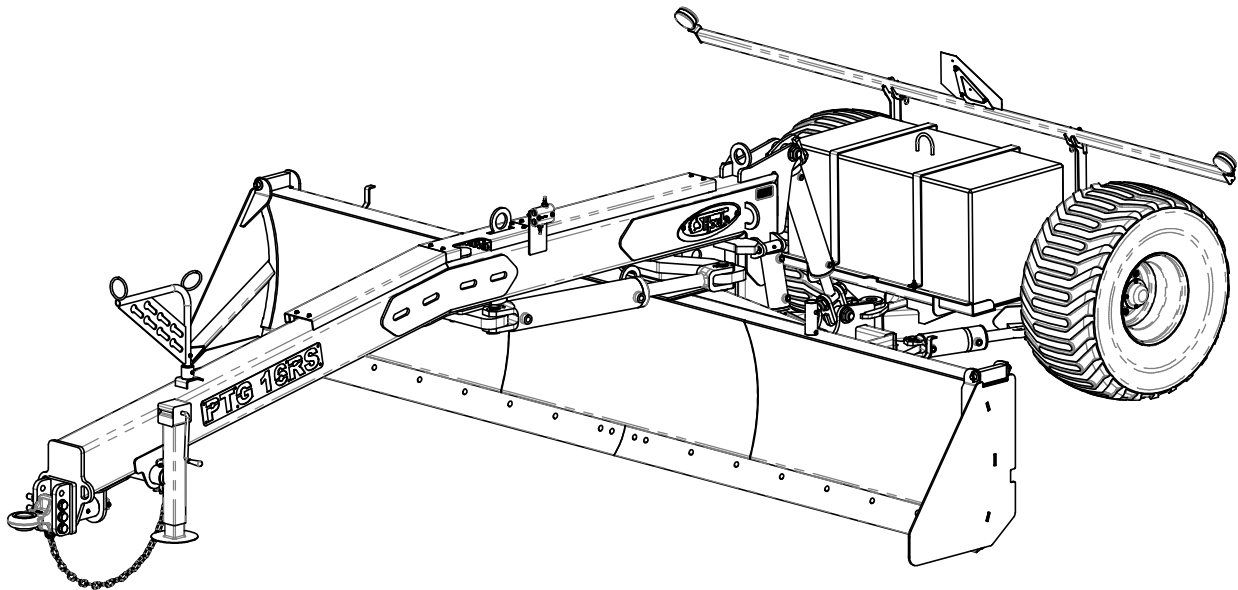




# OWNER'S MANUAL



CAT # N08-60001

**PULL TYPE GRADER PTG-14 / 16 RS**  
**N0814-00001 / N0816-00004**





Introduction.....	3
Safety .....	4
Dimensions .....	9
Maintenance .....	10
Parts .....	11
Pull type grader PTG-14 /16 RS .....	11
Pull type grader (PTG-14 /16 RS) frame kit .....	15
Pull type grader hoses kit (PTG-14 /16 RS) .....	17
250 lbs Counterweight kit .....	19
Warranty .....	20
Product registration .....	21



Congratulations on your purchase of your new **S Houle inc.**, equipment!

This equipment will advantageously complement your agricultural machinery. It has been designed and built specifically for an agricultural market that is always in need of more efficient, better performing equipment.

This **Owner's Manual** is your principal reference in regards to your new equipment. To ensure your equipment delivers many years of quality use, it is important that you follow the use and maintenance guidelines set out in this manual. We urge you and those who will be using and/or performing maintenance on this equipment to ensure that **you have read and understood the contents of this manual prior to first use.**

Please keep this **Owner's Manual** within reach so that you may quickly consult it, as often as necessary. In case of ownership transfer, please ensure that you also remit this manual to the new owner or user.

Should you have any questions, or to obtain more information or additional copies of this manual, please contact us at:

**S Houle Inc.**

300 Industrial Boulevard  
St-Germain-de-Grantham, Qc. Canada J0C 1K0  
Tel.: (819) 395-4380 Fax: (819) 395-5516  
Toll Free: 1-888-404-4380  
Email: [info@shoule.com](mailto:info@shoule.com)  
Web: [www.shoule.com](http://www.shoule.com)

*Locate this symbol – it could save your life*

This symbol is the standard safety symbol. You will find it on most of the decals on your equipment. It is also used throughout this manual.

This symbol is used mainly to draw your attention and to warn you of possible dangers and/or potential injuries.



**It is vital that you read and understand completely the following instructions and safety rules prior to using your equipment.**



The safety symbol accompanied by the word “DANGER” indicates an immediate danger capable of causing serious injury or death.



The safety symbol accompanied by the word “WARNING” indicates a potential danger capable of causing serious injury or death.



The safety symbol accompanied by the word “CAUTION” indicates a potential danger capable of causing injury.

Being well informed is your best protection against accidents. It is therefore important that you give particular attention to the safety guidelines presented in this manual.

**Think SAFETY! Work SAFELY!**



As the owner of this equipment, you are responsible for the safety of its users and those who are responsible for its maintenance. You and any other person using or performing maintenance on this equipment must be familiar with its operation and maintenance, as well as the safety measures contained in this manual. Having safe working practices guarantees a safer work environment.

The owner of this equipment must inform any user of all instructions related to proper operation and use of this equipment, prior to first use.

The user must read, understand and respect all operating and safety instructions contained in this manual. A user who is unaware or ignores the operating and safety instructions contained herein is not qualified to operate this equipment, and exposes him/herself and bystanders to possible serious injury and or death.

Do not in any way modify this equipment. Unauthorized modifications could impair the proper functioning and/or safety of this equipment and possibly affect its useful life as well.

### **General Safety Measures**

1. Read and understand all operating and safety instructions and guidelines contained in this manual prior to using, maintaining or adjusting the equipment.
2. Ensure all safety guards and shields are properly installed prior to using the equipment.
3. Always have a first aid kit within reach, and know how to use it.
4. Always have a fire extinguisher within reach, and know how to use it.
5. Wear appropriate safety gear, such as: hard hat, safety boots, safety goggles, gloves, ear plugs, etc.
6. Clear the area of people, especially children, prior to engaging the equipment.

### **Operating Safety**

In addition to reading and fully understanding this manual,



you should:

1. Lower the land leveler, stop the tractor's engine, set controls to neutral, engage the emergency brake, remove the tractor's ignition key and wait for all moving parts to come to a full stop prior to adjusting, detaching or servicing the land leveler.
2. Keep hands, feet, hair and all clothing away from all moving parts and/or rotating parts.
3. **Do not allow bystanders** on the land leveler or tractor.
4. Do not remove protective guards or shields. Ensure they are in place and properly attached.
5. Clear the area of all people, especially small children, prior to engaging the land leveler and/or the tractor.
6. Be extremely cautious while servicing or while near high pressure hydraulic systems. Ensure all components are fully sealed and in good working order prior to operating the equipment.
7. Ensure all reflectors, lights and the safety triangle are clean prior to transportation on public roads. Check with local authorities to ensure you are compliant with all lighting requirements.

### **Maintenance Safety**

In addition to reading and fully understanding this manual, you should:

1. Lower the land leveler, stop the tractor's engine, set controls to neutral, engage the emergency brake, remove the tractor's ignition key and wait for all moving parts to come to a full stop prior to adjusting, detaching or servicing the land leveler.
2. Keep hands, feet, hair and all clothing away from all moving parts and/or rotating parts.
3. Clear the area of all people, especially small children, prior to engaging the land leveler and/or the tractor.
4. Place safety stands or blocks underneath the frame prior to removing the tires or working underneath the land

leveler.

5. Be extremely cautious while servicing or while near high pressure hydraulic systems. Ensure all components are fully sealed and in good working order prior to operating the equipment. Wear appropriate safety gear to protect your eyes and hands. Use a piece of wood or cardboard as a shield when examining a hose or fitting for a leak.
6. Always relieve pressure prior to disconnecting or servicing hydraulics.
7. Always use original parts when any need replacing.
8. Do not in any way modify this equipment, its components or its intended use. Fabrication S.Houle inc. will not be held responsible should breakage or injury occur as a result of using any non-approved parts or accessories.
9. Do not operate equipment that is defective or that has parts missing.
10. Inspect nuts and bolts regularly and ensure they are tightly secured.

### **Hydraulic System Safety**

In addition to reading and fully understanding this manual, you should:

1. Always set the hydraulic controls to neutral prior to disassembling the hydraulic system.
2. Be extremely cautious while servicing or while near high pressure hydraulic systems. Ensure all components are fully sealed and in good working order prior to operating the equipment. Wear appropriate safety gear to protect your eyes and hands. Use a piece of wood or cardboard as a shield when examining a hose or fitting for a leak.

### **Transportation Safety**

In addition to reading and fully understanding this manual, you should:

1. Check with local authorities to ensure you are compliant with all machinery transportation safety requirements.





### **Storage Safety**

1. Store the land leveler in an area well away from human activity.
2. Store the land leveler in the lowered position.
3. Do not allow children to play near the stored land leveler.

### **Tire Safety**

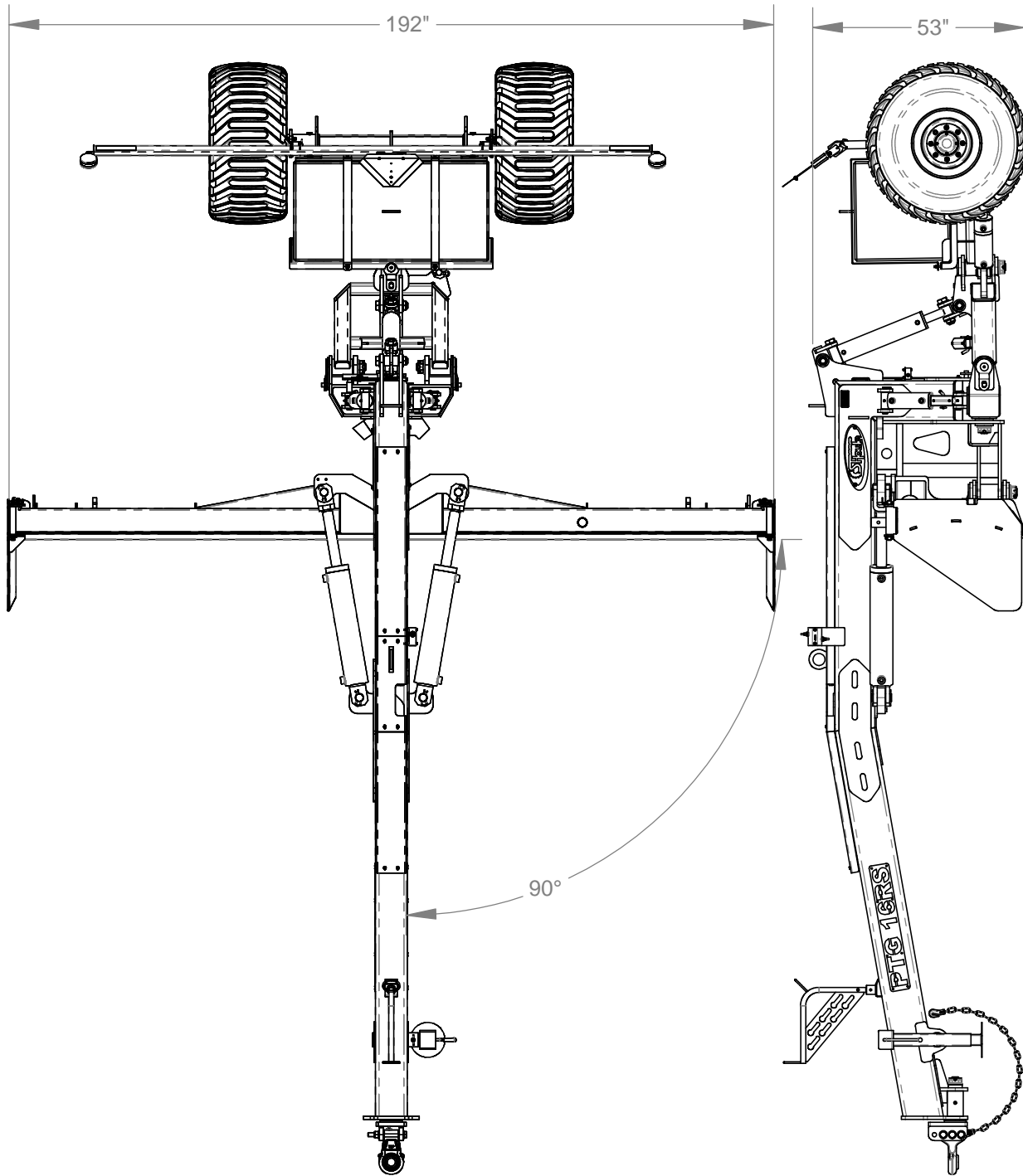
1. Failure to follow appropriate directions while installing a tire on a wheel or rim may result in a blow-out, which could cause serious injury or death.
2. Never attempt to install a tire unless you have the materials and equipment required and have appropriate experience to do so.
3. See a well known tire repair facility or dealer for any repair or maintenance work required.



**PULL TYPE GRADER PTG-14 / 16 RS**  
**N0814-00001 / N0816-00004**

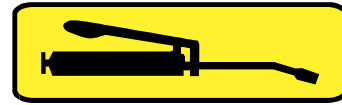
*Dimensions*

*(Model 16 RS illustrated)*



## Greasing

Locate the greasing decals (see illustration on right)



- 1† Use a manual grease gun
- 2† Clean the couplers and fittings with a clean cloth prior to lubricating
- 3† Replace and repair damaged or broken couplers
- 4† If couplers are difficult to lubricate, remove them so as to be able to clean them thoroughly, and replace them if necessary Also clean the lubricant passageway
- 5† Inject lubricant until the excess is expelled through the bearing or bushing areas.

## Types of Lubricants

### Grease

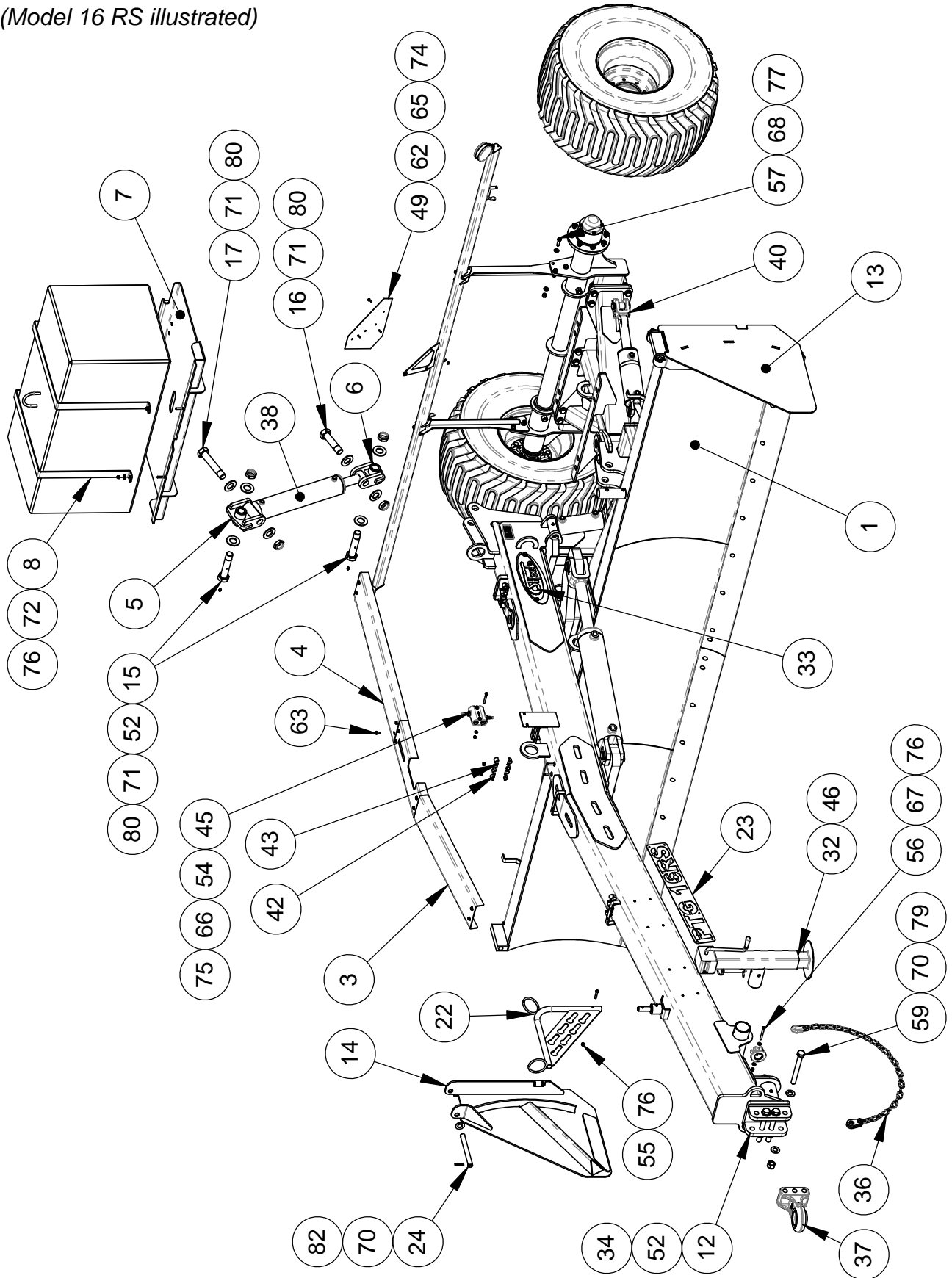
Use an SAE multi-purpose high temperature grease with extreme pressure (EP) performance† A lithium-based SAE multi-purpose grease is also acceptable



**PULL TYPE GRADER PTG-14 / 16 RS**  
**N0814-00001 / N0816-00004**

Parts

(Model 16 RS illustrated)

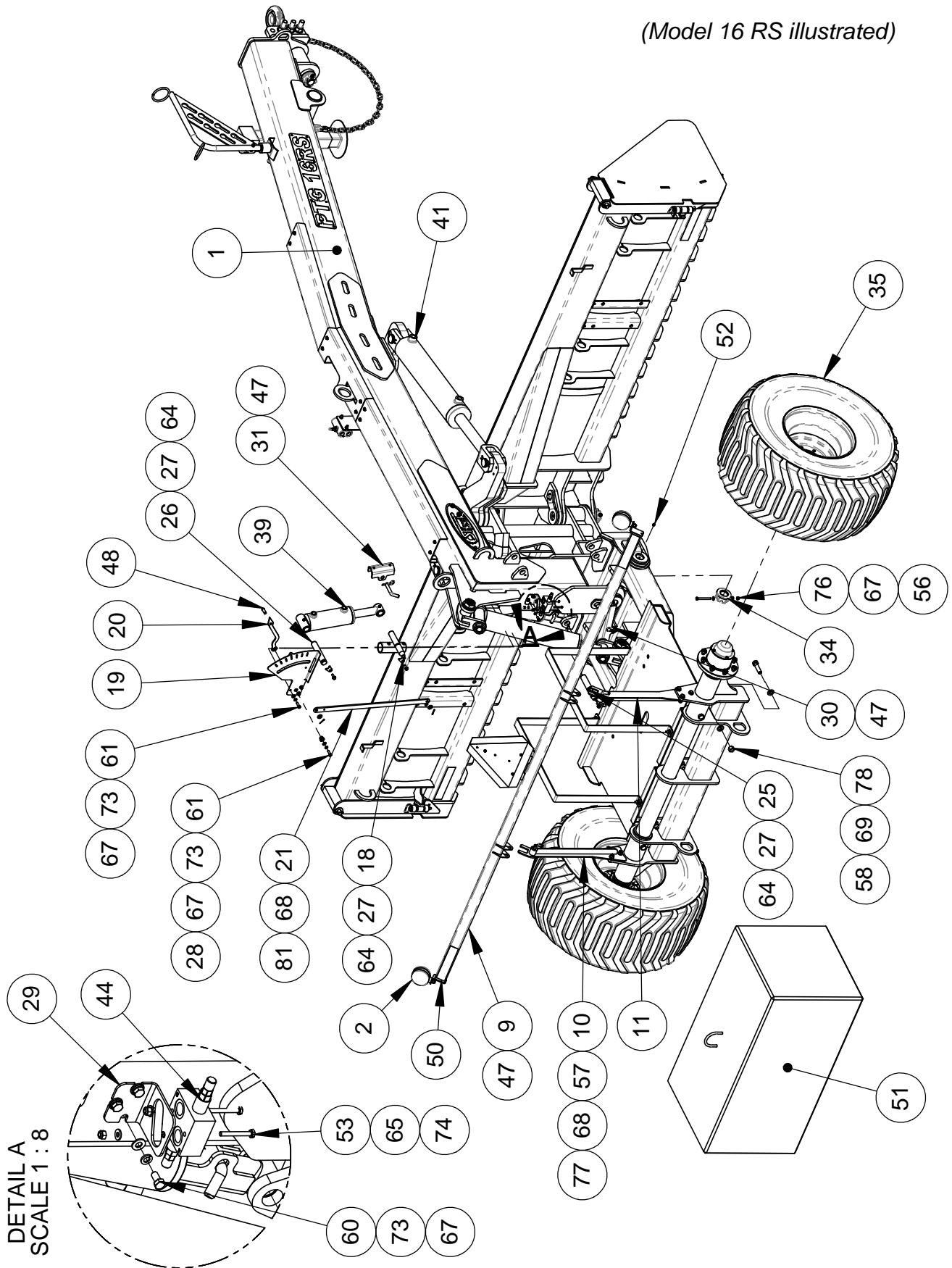




**PULL TYPE GRADER PTG-14 / 16 RS**  
**N0814-00001 / N0816-00004**

Parts

(Model 16 RS illustrated)





**PULL TYPE GRADER PTG-14 / 16 RS**  
**N0814-00001 / N0816-00004**

*Parts*

ITEM	NO	DESCRIPTION	QTY
1	N0814-05E01 / N0816-05E04	PULL TYPE GRADER (PTG-14 / 16 RS) FRAME KIT 1	
2	N08-32E01	SIGNALISATION LIGHT KIT (PULL TYPE GRADER)	1
3	N-04013	HOSES PROTECTOR	1
4	N-04014	HOSES PROTECTOR	1
5	N-05230	CYLINDER HAND	1
6	N-05231	CYLINDER HAND	1
7	N-05305	COUNTER WEIGHT SUPPORT	1
8	N-05306	COUNTERWEIGHT ATTACH	2
9	N-05307	LIGHT SUPPORT	1
10	N-05308	LEFT LIGHT SUPPORT	1
11	N-05309	RIGHT LIGHT SUPPORT	1
12	N-20012	ATTACHMENT SUPPORT	1
13	N-22001	LEFT FLIP SIDE PANEL	1
14	N-22002	RIGHT FLIP SIDE PANEL	1
15	N-25068-P1	PIN 1 1/2" X 7 1/8" LG (YELLOW)	2
16	N-25069-P1	PIN 1 1/2" X 5 7/8" LG (YELLOW)	1
17	N-25070-P1	PIN 1 1/2" X 8" LG (YELLOW)	1
18	N-25072-2	PIN 1 1/4" X 4 1/4" (INDICATOR)	1
19	N-36018-2	INDICATOR	1
20	N-36022-P3	INDICATOR (BLACK)	1
21	N-36023-2-P3	INDICATOR (BLACK)	1
22	N-43014	SWIVEL HOSE SUPPORT	1
23	N-59024 / N-59024-2	PTG 14 / 16 RS LOGO	2
24	UN-25001-56	PIN 1" X 10" (2 HOLES)	2
25	UN-25025-5	PIN 1 1/4" X 4 1/4"	1
26	UN-25025-14	PIN 1 1/4" X 6 1/4"	2
27	UN-25026-2-PZ	PIN 1 1/4" LOCK DEVICE (ZINC PLATED)	4
28	UN-26002-28	BUSHING 3/8" ID.	1
29	UN-31001-8	RELIEF VALVE SUPPORT	1
30	UN-43004-08	HYD. CYLINDER SAFETY LOCK (16" X 2")	1
31	UN-43004-09	HYD. CYLINDER SAFETY LOCK (4 1/2" X 1 3/4")	2
32	UN-43062	JACK 8800 LBS ASS'Y	1
33	UN-59001-3	LOGO S HOULE 6" X 16 1/2"2	
34	01008-5	CASTEL NUT 1 3/4-12 UN	7
35	03024	TIRE AND WHEEL 500/45-22.5	2
36	07037-5	CHAIN SAFETY 1/4" x 46" Lg - 11,000 lb	1
37	20013	BALL HITCH CAT. 4 (BH4SABA)	1
38	30004-2	HYD. CYLINDER 4" X 16" (BUSHING)	1
39	30014-4	HYD. CYLINDER 3 1/2" X 6" (BUSHING)	2
40	30017-3	HYD. CYLINDER 4" X 8" (CLEVIS 1 1/2")	1
41	30025	HYD. CYLINDER 5" X 24" (CLEVIS)	2
42	31015	5/8" DOUBLE HOSE CLAMP	9
43	31015-2	DOUBLE HOSE CLAMP 3/4"	3
44	31017	DOUBLE CROSS RELIEF VALVE (10 GPM)	1
45	31017-4	DOUBLE CROSS OVER RELIEF (30 GPM)	1



**PULL TYPE GRADER PTG-14 / 16 RS**  
**N0814-00001 / N0816-00004**

*Parts*

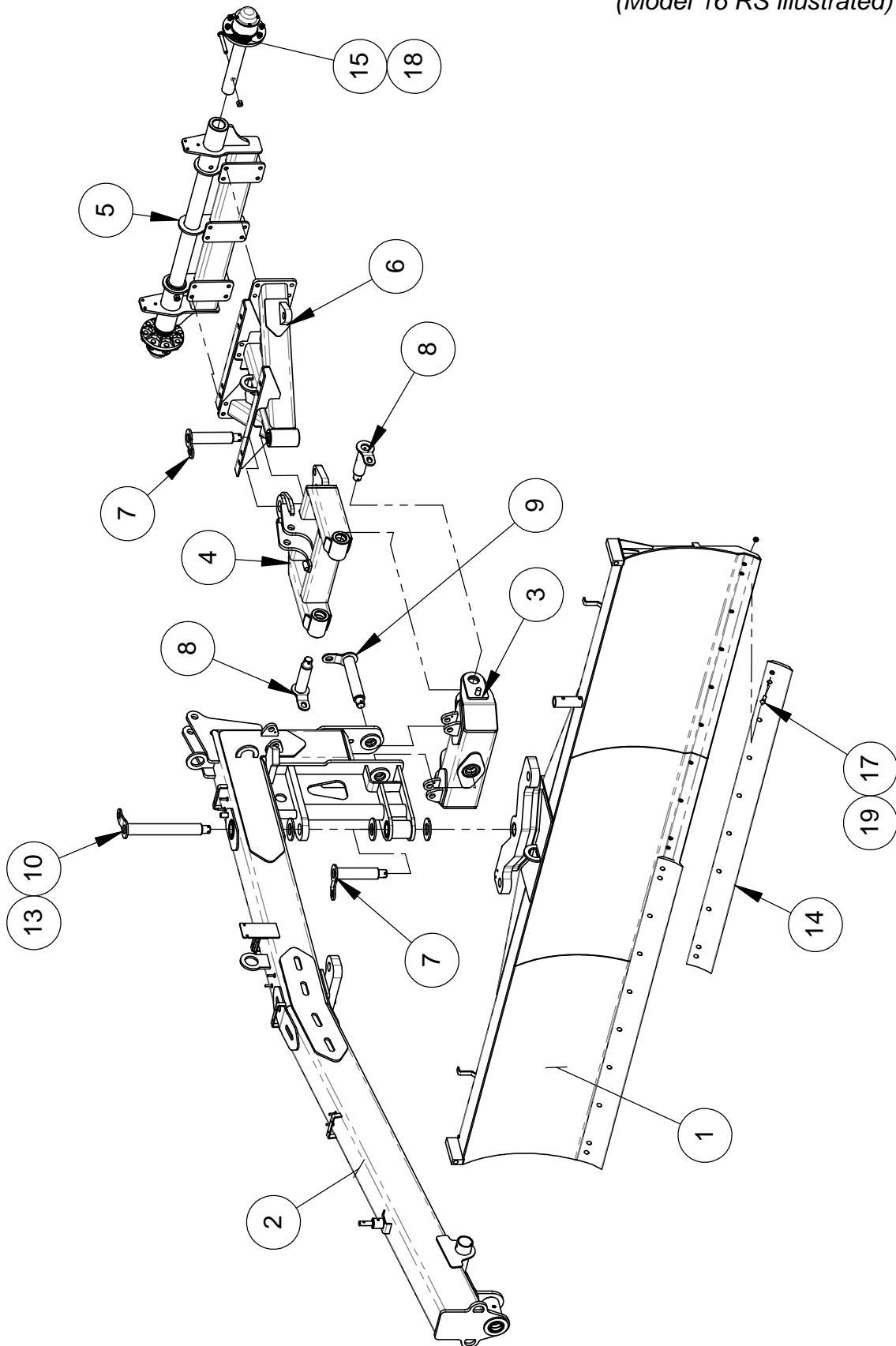
ITEM	NO	DESCRIPTION	QTY
46	35006-11	PIN 5/8" X 4 1/2"	3
47	35011	BENT PULL PIN 5/8" X 3"	5
48	35057	CLEVIS PIN 1/2" X 1" LG	1
49	36002	SLOW MOVING VEHICLE SIGN (SMV)	1
50	36003-010	RED REFLECTING BAND X 10" LG	4
51	36005	CONCRETE CONTERWEIGHT 2200 LBS	1
52	35012	STRAIGHT GREASE FITTING 1/8 NPT	11
53	45AA004200200	HEX BOLT 1/4-20NC X 2" GR5	2
54	45AA005180300	HEX BOLT 5/16-18NC x 3" GR5	2
55	45AA006160200	HEX BOLT 3/8-16NC x 2" GR5	1
56	45AA006160308	HEX BOLT 3/8"-16NC X 3 1/2" GR5	8
57	45AA008130112	HEX BOLT 1/2-13NC X 1 3/4" GR5	6
58	45AA012100300	HEX BOLT 3/4-10NC X 3" GR5	12
59	45AB100080900	HEX BOLT 1"-8NC X 9" GR8	3
60	45AC006160012	HEX BOLT FULL TREAD 3/8-16NC x 3/4" GR5	3
61	45AC006160104	HEX BOLT FULL TREAD 3/8-16NC x 1 1/4" GR5	4
62	45AE004200012	WHIZ-LOCK BOLT 1/4-20NC X 3/4"	3
63	45AE005180012	WHIZ-LOCK BOLT 5/16-18 X 3/4"	10
64	45AE006160100	WHIZ-LOCK BOLT 3/8-16NC X 1"	8
65	46AB004	HARDENED FLAT WASHER 1/4"	5
66	46AB005	HARDENED FLAT WASHER 5/16"	2
67	46AB006	HARDENED FLAT WASHER 3/8"	23
68	46AB008	HARDENED FLAT WASHER 1/2"	14
69	46AB012	HARDENED FLAT WASHER 3/4"	24
70	46AB100	HARDENED FLAT WASHER 1"	10
71	46AB108	HARDENED FLAT WASHER 1 1/2"	8
72	46AA006	FLAT WASHER 3/8"	4
73	46AC006	LOCK WASHER 3/8"	7
74	47AB00420	NYLON LOCK NUT 1/4-20 NC	5
75	47AB00518	NYLON LOCK NUT 5/16"-18NC	2
76	47AB00616	NYLON LOCK NUT 3/8"-16NC	19
77	47AB00813	NYLON LOCK NUT 1/2-13 NC	6
78	47AB01210	NYLON LOCK NUT 3/4-10NC	12
79	47AB10008	NYLON LOCK NUT 1"-8NC	3
80	47AG10806	THIN NYLON LOCK NUT 1 1/2-6NC	4
81	49AC020100	CUTTER PIN 1/8" X 1" LG.	2
82	49AA050200	SPRING PIN 5/16"X2"	4



# PULL TYPE GRADER (PTG-14 / 16 RS) FRAME KIT N0814-05E01 / N0816-05E04

Parts

(Model 16 RS illustrated)







**PULL TYPE GRADER (PTG-14 / 16 RS) FRAME KIT  
N0814-05E01 / N0816-05E04**

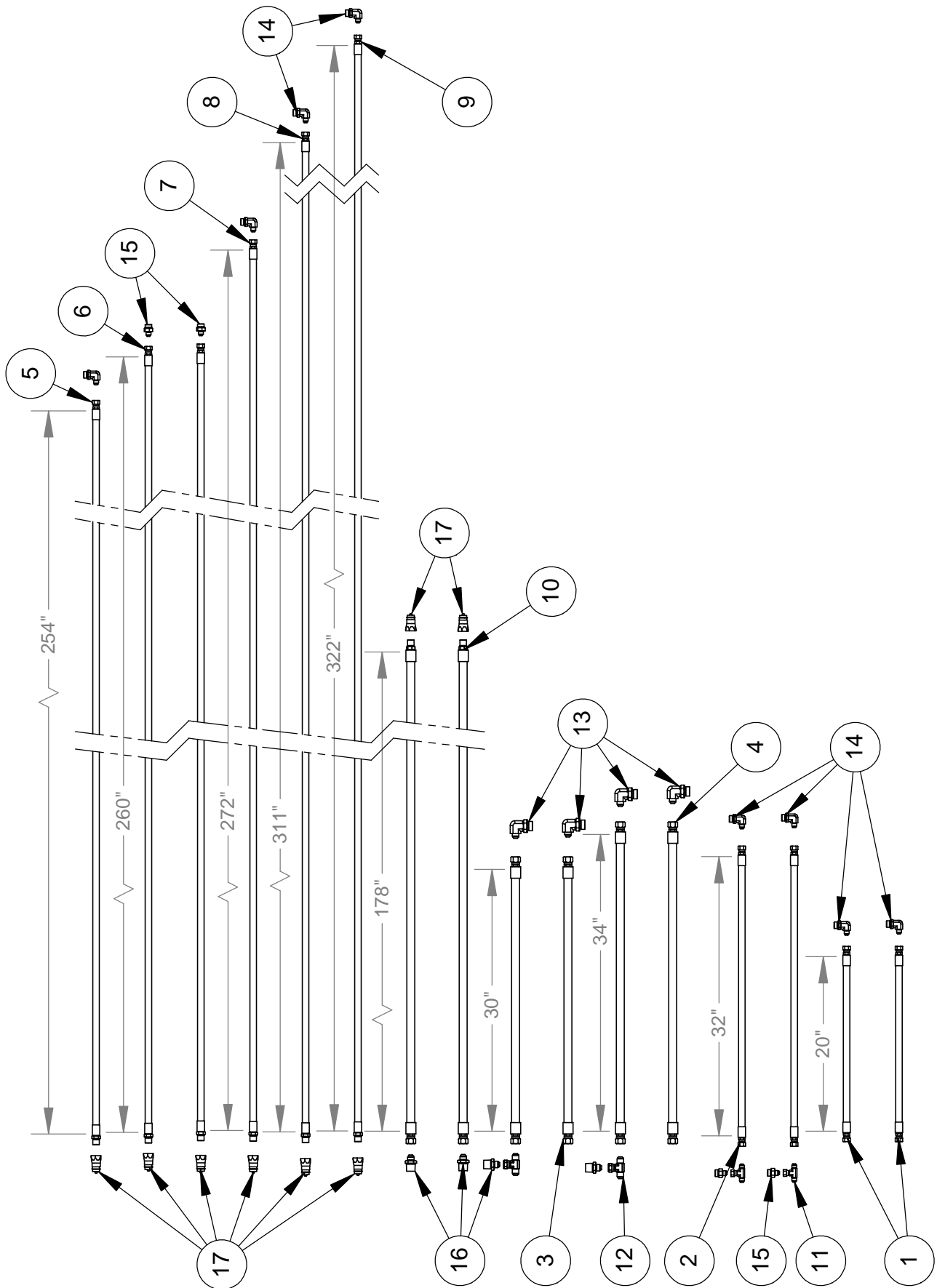
*Parts*

ITEM	NO	DESCRIPTION	QTY
1	N-05249 / N-05242	FRAME PTG BLADE 14 ft / 16 ft	1
2	N-05243	MAIN FRAME PTG	1
3	N-05244	TILT FRAME	1
4	N-05245	REAR SUPPORT	1
5	N-05303	AXEL ASS'Y	1
6	N-05304	AXEL SUPPORT	1
7	N-25064	PIN 2 1/2" X 9 7/8" LG	2
8	N-25073	PIN 2 1/5" X 6 5/8" LG	2
9	N-25074	PIN 2 1/2" X 12 1/2" LG	1
10	N-25075	PIN 2 1/2" X 17 1/2" LG	1
11	N-28007	STOPPER	1
12	UN-01E01	AXEL AND HUB 8000 LBS KIT	2
13	UN-28020	WEARING WASHER	3
14	21012-3	ROUND CUTTING EDGE 5/8" X 6" X 8' (5/8")	2
15	45AA012100508	HEX BOLT 3/4-10NC x 5 1/2" GR5	2
16	45BA008130208	SOCKET CAP SCREW 1/2-13NC X 2 1/2"	2
17	45CA010110200	SCRAPER BOLT DOME HEAD 5/8"-11NC X 2" GR5	20
18	47AB01210	NYLON LOCK NUT 3/4-10NC	2
19	47AC01011	STOVER LOCK NUT 5/8-11NC	20



# PULL TYPE GRADER HOSES KIT (PTG-RS) N08-29E02

Parts





**PULL TYPE GRADER HOSES KIT (PTG-RS)  
N08-29E02**

*Parts*

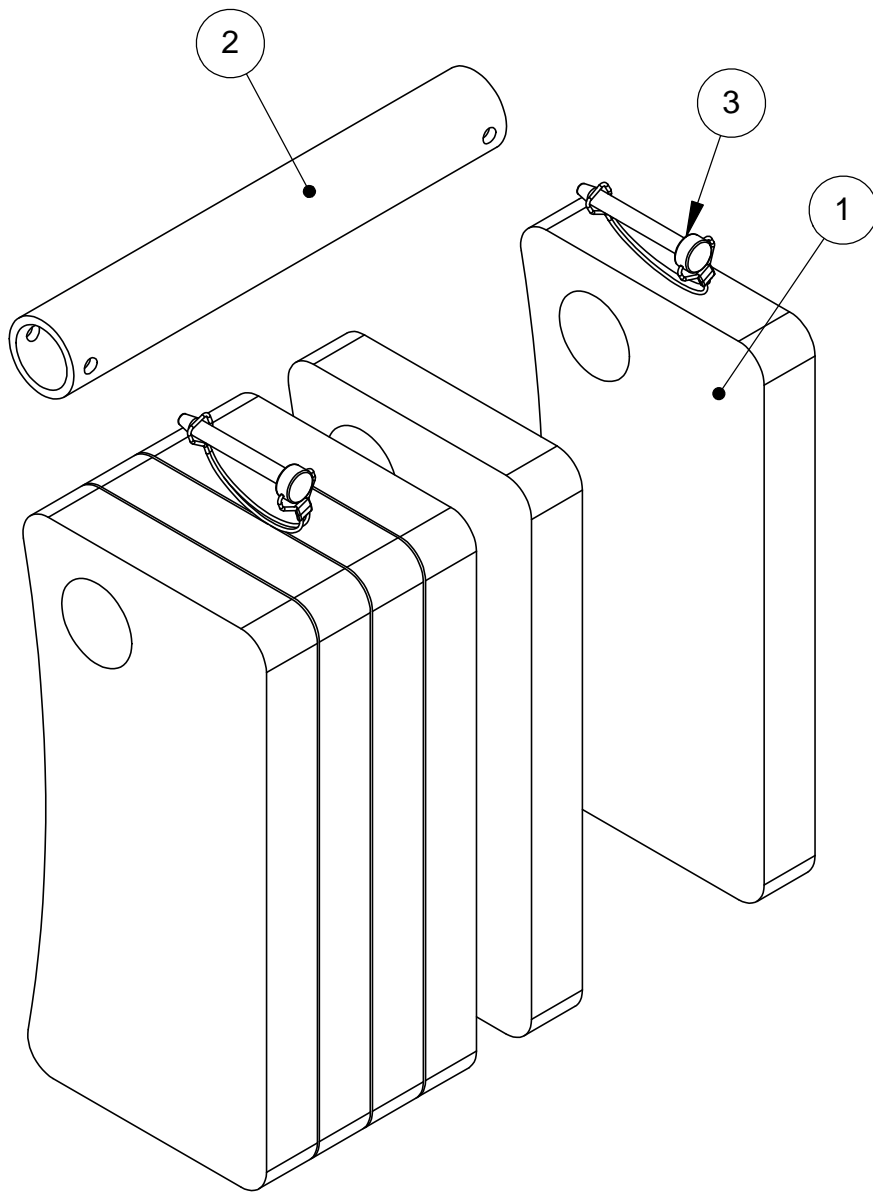
ITEM	NO	DESCRIPTION	QTY
1	UN-29001-020	HYD. HOSE 3/8" LP 3/8" JIC(F) X 3/8" JIC(F) X 20"	2
2	UN-29001-032	HYD. HOSE 3/8" LP 3/8" JIC(F) x 3/8" JIC(F) X 32"	2
3	UN-29009-030	HYD. HOSE 1/2" LP 1/2" JIC(F) x 1/2" JIC(F) X 30"	2
4	UN-29009-034	HYD. HOSE 1/2" LP 1/2" JIC(F) x 1/2" JIC(F) X 34"	2
5	UN-29028-254	HYD. HOSE 3/8" LP 3/8" JIC(F) x 1/2" ORB(M) X 254"	1
6	UN-29028-260	HYD. HOSE 3/8" LP 3/8" JIC(F) x 1/2" ORB(M) X 260"	2
7	UN-29028-272	HYD. HOSE 3/8" LP 3/8" JIC(F) x 1/2" ORB(M) X 272"	1
8	UN-29028-311	HYD. HOSE 3/8" LP X 3/8" JIC(F) x 1/2" ORB(M) X 311"	1
9	UN-29028-322	HYD. HOSE 3/8" LP 3/8" JIC(F) x 1/2" ORB(M) X 322"	1
10	UN-29031-178	HYD. HOSE 1/2" LP 1/2" JIC(F) x 1/2" ORB(M) X 178"	2
11	31002-2	ADAP. 3/8 JIC(M) / 3/8 JIC(F) / 3/8 JIC(M)(TEE)	2
12	31002-3	BULK HEAD ADAP. 1/2" JIC(M) / 1/2" JIC(M) / 1/2" JIC(M)(TE)	2
13	31013-19	ADAP. 3/4" ORB(M) / 1/2" JIC(F)(90)	4
14	31013-2	90° HYD FITTING 1/2"ORB(M) / 3/8"JIC(M)	8
15	31014-3	ADAP. 3/8"JIC(M) / 1/2"ORB(M)(STR)	4
16	31014-9	ADAP. 3/4" NPT(M) / 1/2"JIC(M)(STR)	4
17	31016-2	QUICK COUPLER MALE 1/2"ORB(F) (S71-15P)	8



# 250 LBS COUNTERWEIGHT KIT N-36E11 (OPTION)

Parts

ITEM	NO	DESCRIPTION	QTY
1	N-36016	COUNTERWEIGHT (40 LBS)	6
2	N-36017	COUNTERWEIGHT LOCK DEVICE	1
3	35048	LOCK PIN 3/8" X 2 1/2"	2





## Warranty Policy on new S Houle equipment

---

S Houle Inc. offers a warranty on all new equipment for a period of **1 year after date of retail purchase**, according to the terms listed below:

1. **AN APPROVAL FROM S HOULE INC. IS REQUIRED BEFORE ANY REPAIRS OR WARRANTY CLAIMS, WITH ACCOMPANYING PHOTOS AND THE EQUIPMENT'S SERIAL NUMBER;**
2. All claims must be received **30 days after date of approval;**
3. The equipment is F.O.B. St-Germain-de-Grantham at all times;
4. All defective parts must be returned to S Houle Inc. or retrieved by a representative of the manufacture **within a period of 30 days following the warranty claim;**
5. The S Houle warranty covers all defects in material or fabrication of the products only, and therefore does not covers the normal wear or non-recommended utilization of the product. All breaks resulting from an accident or abusive use will not be covered by the warranty policy;
6. The warranty does not cover any traveling fees to gain access to the equipment for evaluation or repairs;
7. Only original parts or S Houle approved parts will be considered appropriate for warranty claims;
8. S Houle Inc. reserves the right to refuse any labor time deemed excessive for any repair work claimed on warranty.
9. The labor fees compensated on warranty claims may never exceed **100\$/hour;**
10. On request, S Houle Inc. can provide the service of a road mechanic to effect repairs, for a fee of 100\$/hour + travel fees of 0.60\$/km;
11. The standard color of all equipment out of the factory will be S Houle yellow unless specifically requested by the client;
12. The warranty policy does not apply to the **NORMAL WEAR PARTS** listed below:

***Examples: Flow divider, cutting edges, bolts, nuts, spring blades, skid shoes, skid shoe bolts, sliders, chaines and chain hitches, cast iron shoes, hydraulic hoses, clutch and clutch components, gearboxes, driveshafts and others.***

### PURCHASER'S RESPONSIBILITIES

The present warranty presumes a correct maintenance and periodic inspections of the equipment by the owner, as described in the Owner's Manual provided with the equipment at time of purchase. The cost of regular maintenance or required servicing is the responsibility of the client. The buyer must conserve all receipts proving that the required maintenance has been respected.

### EXCLUSIONS ON SUBSEQUENT MANUFACTURER UPGRADES

S Houle Inc. reserves the right to modify, change or improve any product with no obligation to replace or modify any previously purchased equipment.



**S Houle inc.**

300 Industrial blvd.  
St-Germain-de-Grantham, Quebec, Canada, J0C 1K0  
Phone : 819 395-4380 Fax. : 819 395-5516  
Toll free : 1 888-404-4380  
E-Mail : info@shoule.com Web: www.shoule.com

**Product Registration**

**Dealer instructions:**  
Make sure registration is complete and signed.

**Product Information :**

MACHINE MODEL : \_\_\_\_\_ DELIVERY DATE : \_\_\_\_\_ / \_\_\_\_\_ / \_\_\_\_\_  
mm dd yyyy  
SERIAL NUMBER : \_\_\_\_\_  
OPTIONAL EQUIPMENT : \_\_\_\_\_

**Customer Information :**

FIRST & LAST NAME : \_\_\_\_\_ PHONE : \_\_\_\_\_  
MAILING ADDRESS : \_\_\_\_\_ EMAIL : \_\_\_\_\_  
Civic number and street  
City  
State / Province Zip Code

**Dealer Information :**

DEALER NAME : \_\_\_\_\_ PHONE : \_\_\_\_\_  
MAILING ADDRESS : \_\_\_\_\_ EMAIL : \_\_\_\_\_  
Civic number and street  
City  
State / Province Zip Code

**Signatures :**

\_\_\_\_\_  
Owner or designated representative signature  
\_\_\_\_\_  
Authorized dealer signature  
**Note : Both dealer and owner must sign in order to validate the warranty.**

**I hereby acknowledge that:**

- |  |  |
|--|--|
| <ol style="list-style-type: none"><li>1. I have received and accepted delivery of equipment described.</li><li>2. The equipment was checked thoroughly for loose or missing parts and has been adjusted in accordance with the pre-delivery checklist.</li><li>3. I have been provided with and have carefully read the instruction manual.</li><li>4. I have read and understand the nature and extent of the warranty and understand clearly that there were and are no other representations or warranties, either express or implied, made by anyone.</li><li>5. A copy of the present document must be completed and transmitted to Fa-</li></ol> | <ol style="list-style-type: none"><li>6. brication S.Houle as soon as possible, in order to process your warranty.</li><li>6. I have been advised on proper operation, maintenance and lubrication procedures of this equipment.</li><li>7. I have been instructed on and do understand the application, limitations and capacities this equipment was designed and recommended for, all as described in the Instruction Manual and other literature published by Fabrication S.Houle inc.</li></ol> |
|--|--|

ONE YEAR WARRANTY COVER PARTS ONLY, EFFECTIVE WHEN THIS FORM HAS ALL APPLICABLE INFORMATION COMPLETED, IS SIGNED BY BOTH THE OWNER AND THE DEALER AT THE TIME OF DELIVERY, THEN FORWARDED TO **S HOULE INC.** WARRANTY SERVICE MAY BE DENIED IF THIS FORM CONTAINS FALSE INFORMATION IS OR INCOMPLETE.



### **S Houle inc.**

300 boul. Industriel  
St-Germain-de-Grantham, Québec, Canada, J0C 1K0  
Tél : 819 395-4380      Téléc. : 819 395-5516  
Sans frais : 1 888-404-4380  
Courriel : [info@shoule.com](mailto:info@shoule.com)      Site : [www.shoule.com](http://www.shoule.com)

### **S Houle inc.**

300 Industrial blvd  
St-Germain-de-Grantham, Québec, Canada, J0C 1K0  
Phone : 819 395-4380      Fax. : 819 395-5516  
Toll free : 1 888-404-4380  
E-mail : [info@shoule.com](mailto:info@shoule.com)      Web : [www.shoule.com](http://www.shoule.com)