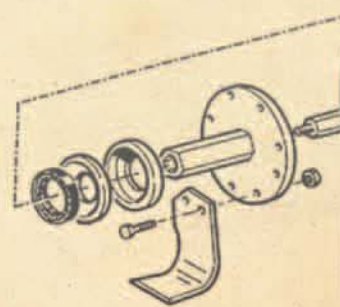
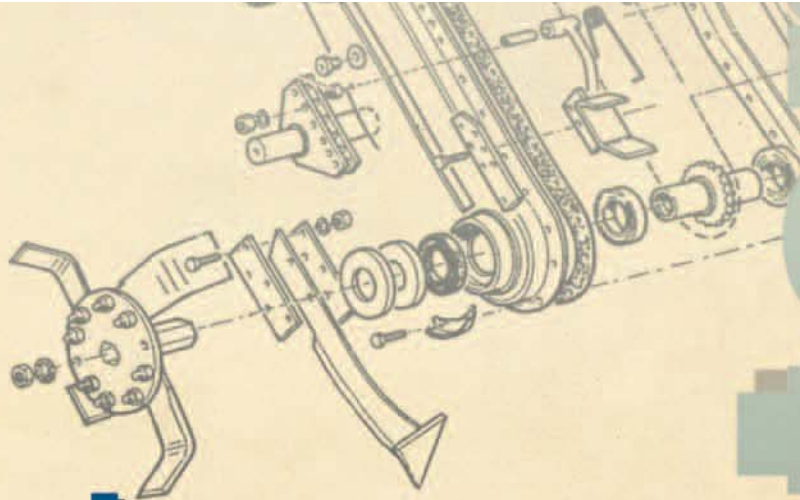




# Multivator

The **Multivator** is a rotary powered cultivator for use in a wide variety of vegetable and field crops. Multivator is the premier name in rotary powered cultivation. The **Multivator** is custom built for all applications, and sold through a network of Multivator dealers across North America.



A **MULTIVATOR** is a high-clearance rotary tillage machine designed for inter-row cultivation of vegetable, nursery, fruit and field crops. Mounted on the three-point hitch of a tractor and powered by the tractor PTO, the **MULTIVATOR** transmits power to a selected number of rotary tiller heads each equipped with blades that cultivate the ground between

Use of a **MULTIVATOR** gives positive control over this important area between plant rows, reducing or eliminating the need for herbicides, and creating a soil condition that will absorb and retain moisture. The versatility

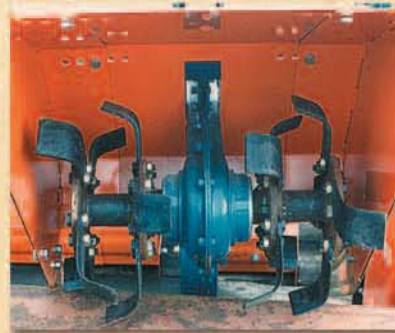
It also allows for inter-row spaces that may shrink as plants grow and expand into the row. There are three basic **MULTIVATOR** models to suit different tractors, varying ground conditions, and small, medium, or large



*Model FL with 2 heads, clearing row middles during strawberry renovation*



*Model FP 66" frame with 2x12-16" tillage heads*



*Detail of the blades, model FP. Hubs are easily added or removed to change head width.*

rows of growing crops. Weed growth is eliminated and crusted or compacted soils are transformed into a desirable tilth.

of the machine allows its use at all critical stages of plant development, in a wide variety of crops on differing row centers.

applications. The following table gives general specifications for these models. More details can be found in the product price list.





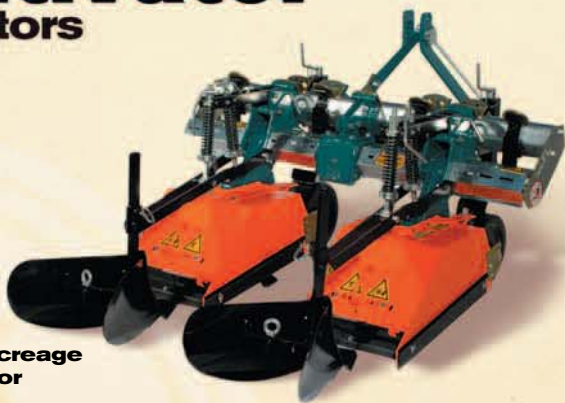
Explore the Full Line of

# Multivator Cultivators

Model

## FL

Small Acreage Cultivator



Model

## FLA

High Clearance Cultivator

Model

## FP

Medium Acreage Cultivator



Model

## FPSR

Commercial Growing Cultivator

# PRODUCT FEATURES



## SIMPLICITY



**Simplicity** – Tillage heads are mounted on the frame and secured by two bolts. A hexagonal bar drives all heads from a single gearbox. Each head floats independently to compensate for uneven ground, and extra down pressure may be applied to assist penetration in hard ground. Every machine comes with two adjustable gauge wheels to maintain frame height.



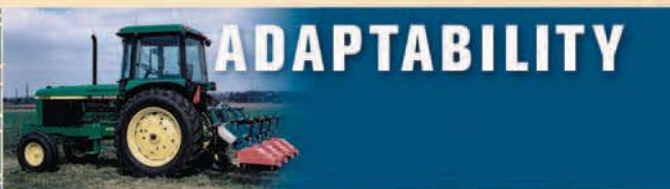
## VERSATILITY



**Versatility** – Loosening the two securing bolts and sliding the head to the desired position adjusts the location of each head. Adding or removing blades and shielding easily changes the head size to another tillage width. Optional equipment includes ridge attachments that may be fitted behind each head for throwing tilled soil back on the ridge, and granular fertilizer boxes.



## ADAPTABILITY



**Adaptability** – The **MULTIVATOR** can be used in a wide variety of specialty crops including lettuce, carrots, onions, spinach, and celery. It is used successfully in nursery stock, cotton, soybeans, perennials, and medicinal herbs, and is an essential renovation tool for many strawberry growers. If a crop is grown on flat land, on beds, or even on plastic, the versatile **MULTIVATOR** rotary tiller is the best implement to use for inter-row cultivation.

Model	HP Range	Ground Clearance	Min/Max Head Width	Hex Shaft Diameter	Drive-case Roller Chain Spec
FL	15-50 16"		5.5" 32"	30mm (1-1/8")	12B (#60HD)
FLA	15-50 20"		5.5" 32"	30mm (1-1/8")	12B (#60HD)
FP	25-100	20"	9" 32"	41mm (1-5/8")	16B (#80HD)
FPA	25-100	25"	9" 32"	41mm (1-5/8")	16B (#80HD)
FPXA	25-100	32"	9" 32"	41mm (1-5/8")	16B (#80HD)
FPSR	25-150	20"	12" 32"	50mm (2")	20B (#100HD)
FPSRXA	25-150	32"	12" 32"	50mm (2")	20B (#100HD)



**GENERAL  
IMPLEMENT**  
DISTRIBUTORS

# Multivator

## Multivator Cultivator

### Model FL

Model FL Multivator is a lighter series machine designed for tractors under 50 horsepower. Due to the compact nature of the design, this model works very well with sub-compact tractors. The ground clearance under the hex drive bar is 16".

A complete Multivator is made up of a frame assembly, a number of tillage heads, PTO shaft and optional equipment as required. To price out a complete Multivator, add the price of the frame, PTO shaft and tillage heads together.

Frame assemblies comprise the main toolbar; hex drive bar; gauge wheels; 540 rpm gearbox; three point hitch.

Standard equipment includes: steel gauge wheels; 4 blades per flange  
FL tillage heads use #60 roller chain in an oil-bath chaincase



### FL Frame Assemblies

Item Number	Model	Frame Width (in.)	Ground Clearance	Weight (lbs.)	List Price
M510320002	FL	66"	16"	260	\$3,255
M510320002XXN	**FL**	66"	16"	255	\$3,575
M510320004	FL	90"	16"	287	\$3,400
M510320004XXN	**FL**	90"	16"	285	\$3,720
M510320006	FL	132"	16"	364	\$3,985
M510320201	FL	158"	16"	475	\$4,450

\*\* XXN Frames use extra narrow gearboxes for row centers less than 12"

### PTO Shaft (must order 1 per frame assembly)

14006438	Stanard size 4 PTO shaft	\$308
14106438	Size 4 PTO shaft with slip clutch	\$462

### FL Tillage Heads

Item Number	Model	Frame Width (in.)	Ground Clearance	Weight (lbs.)	No. Blades	List Price
M510070001	FL	5.5"-7"	16"	89	8	\$1,345
M510070002	FL	7"-10"	16"	89	8	\$1,335
M510070003	FL	12"-15"	16"	103	16	\$1,460
M510070004	FL	16"-20"	16"	121	24	\$1,535
M510070005	FL	20"-24"	16"	131	32	\$1,705
M510070006	FL	28"-32"	16"	149	40	\$1,860

### FL/FLA Granular Fertilizer Box

		Capacity			
M530280001	FL/FLA	40"	300 lbs.	145	\$2,560
M530280002	FL/FLA	60"	450 lbs.	170	\$3,055
M530280003	FL/FLA	80"	600 lbs.	200	\$3,310

### FL Ridger

M530230002	FL ridger assembly (per head)	30	\$360
------------	-------------------------------	----	-------

### FL Options

M530090001	Steering guide	\$2,130
------------	----------------	---------



# Multivator

## Multivator Cultivator

### Model FLA

Model FLA Multivator is a lighter series machine designed for tractors up to 50 horsepower.

The ground clearance under the hex drive bar is 20".

A complete Multivator is made up of a frame assembly, a number of tillage heads, PTO shaft and optional equipment as required. To price out a complete Multivator, add the price of the frame, PTO Shaft and tillage heads together.

Frame assemblies comprise the main toolbar; hex drive bar; gauge wheels; 540 rpm gearbox; three point hitch.

Standard equipment includes: steel gauge wheels; 4 blades per flange

FLA tillage heads use #60 roller chain in an oil-bath chaincase



### FLA Frame Assemblies

Item Number	Model	Frame Width (in.)	Ground Clearance	Weight (lbs.)	List Price
M510320031	FLA	66"	20"	265	\$3,400
M510320031XXN	**FLA**	66"	20"	260	\$3,720
M510320032	FLA	90"	20"	293	\$3,545
M510320032XXN	**FLA**	90"	20"	290	\$3,865
M510320033	FLA	130"	20"	370	\$4,125
M510320030	FLA	158"	20"	480	\$4,595

\*\* XXN Frames use extra narrow gearboxes for row centers less than 12"

### PTO Shaft (must order 1 per frame assembly)

14006438	Stanard size 4 PTO shaft	\$308
14106438	Size 4 PTO shaft with slip clutch	\$462

### FLA Tillage Heads

Item Number	Model	Width	Clearance	Weight	No. Blades	List Price
M510070013	FLA	5.5"-7"	20"	94	8	\$1,375
M510070014	FLA	7"-10"	20"	94	8	\$1,325
M510070015	FLA	12"-15"	20"	108	16	\$1,490
M510070016	FLA	16"-20"	20"	126	24	\$1,565
M510070017	FLA	20"-24"	20"	136	32	\$1,735
M510070018	FLA	28"-32"	20"	154	40	\$1,890

### FLA Granular Fertilizer Box

		Capacity			
M530280001	FL/FLA	40"	300 lbs.	145	\$2,560
M530280002	FL/FLA	60"	450 lbs.	170	\$3,055
M530280003	FL/FLA	80"	600 lbs.	200	\$3,310

### FLA Ridger

M530230003	FLA ridger assembly (per head)	30	\$365
------------	--------------------------------	----	-------

### FLA Options

M530090002	Steering guide	\$2,240
	Optional pneumatic gauge wheel upgrade	\$450





# Multivator

## Multivator Cultivator

### Model FP

Model FP Multivators are medium series machines, for 25-100 HP tractors. They are suited for larger vegetable farms, strawberry renovation, nurseries and field crops.

A complete Multivator is made up of a frame assembly, a number of tillage heads, PTO shaft and optional equipment as required. To price out a complete Multivator, add the price of the frame, PTO shaft and tillage heads together.

Frame assemblies comprise the main toolbar; hex drive bar; gauge wheels; 540 rpm gearbox; three point hitch.

Standard equipment includes: steel gauge wheels; 4 blades per flange. FP tillage heads use #80 roller chain in an oil-bath chaincase. Ground clearance under the hex drive shaft is 20".



### FP Frame Assemblies

Item Number	Model	Frame Width (in.)	Ground Clearance	Weight (lbs.)	List Price
M520320011	FP	66"	20"	378	\$4,840
M520320012	FP	90"	20"	417	\$5,050
M520320013	FP	132"	20"	571	\$5,485
M520320028	FP	180"	20"	746	\$6,995
M520320031	FP	192"	20"	900	\$7,740

### PTO Shaft (must order 1 per frame assembly)

14006642	Standard size 6 PTO shaft	\$367
14106654	Size 6 PTO shaft with slip clutch	\$632

### FP Tillage Heads

Item Number	Model	Width	Clearance	Weight	No. Blades	List Price
M520070117	FP	9" - 11"	20"	150	8	\$2,030
M520070118	FP	12" - 16"	20"	158	8	\$2,020
M520070119	FP	18" - 22"	20"	180	16	\$2,290
M520070121	FP	24" - 32"	20"	207	24	\$2,550

### FP Granular Fertilizer Box

	Capacity				List Price
M540280007	40"	300 lbs.	145		\$2,585
M540280008	60"	450 lbs.	170		\$3,080
M540280009	80"	600 lbs.	200		\$3,360

### FP Ridger

M540230005	FP ridger assembly (per head)	40	\$390
------------	-------------------------------	----	-------

### FP Options

M540090003	Steering guide	\$2,530
	Optional pneumatic gauge wheel upgrade	\$450



# Multivator

**Multivator Cultivator**  
**Model FPA and FPXA (high clearance models)**

Model FPA and FPXA Multivators are medium series machines, with higher ground clearance than the standard FP. They are recommended for applications such as nursery crops and ornamental grasses, where the crop is taller.

A complete Multivator is made up of a frame assembly, a number of tillage heads, PTO shaft and optional equipment as required. To price out a complete Multivator, add the price of the frame, PTO shaft and tillage heads together. Frame assemblies comprise the main toolbar; hex drive bar; gauge wheels; 540 rpm gearbox; three point hitch.



Standard equipment includes: steel gauge wheels; 4 blades per flange. FP tillage heads use #80 roller chain in an oil-bath chaincase. Ground clearance under the hex drive shaft is 25" on FPA; 32" on FPXA

**FPA/FPXA Frame Assemblies**

Item Number	Model	Frame Width (in.)	Weight (lbs.)	List Price
M520320035	FPA & FPXA	66"	386	\$4,935
M520320036	FPA & FPXA	90"	424	\$5,145
M520320037	FPA & FPXA	132"	579	\$5,585
M520320200	FPA & FPXA	180"	758	\$7,090
M520320033	FPA & FPXA	192"	925	\$7,835

**PTO Options (must order 1 per frame assembly)**

14006642	Stanard size 6 PTO shaft	\$367
14106654	Size 6 PTO shaft with slip clutch	\$632

**FPA/FPXA Tillage Heads**

Item Number	Model	Width	Clearance	Weight	No. Blades	List Price
M520070199	FPA	9" - 11"	25"	164	8	\$2,350
M520070200	FPA	12" - 16"	25"	172	8	\$2,340
M520070201	FPA	18" - 22"	25"	193	16	\$2,605
M520070203	FPA	24" - 32"	25"	219	24	\$2,865
M520070123	FPXA	12" - 16"	32"	180	8	\$2,435
M520070124	FPXA	18" - 22"	32"	200	16	\$2,750
M520070126	FPXA	24" - 32"	32"	225	24	\$2,965

**FPA/FPXA Granular Fertilizer Box**

Item Number	Model	Capacity	Weight	List Price	
M540280007	FP	40"	300 lbs.	145	\$2,585
M540280008	FP	60"	450 lbs.	170	\$3,080
M540280009	FP	80"	600 lbs.	200	\$3,360

**FPA/FPXA Ridger**

M540230006	FPA ridger assembly (per head)	43	\$400
M540230007	FPXA ridger assembly (per head)	48	\$400



# Multivator

## Multivator Cultivator

### Model FPSR

Model FPSR Multivators are heavy series machines for higher horsepower tractors and larger field operations.

For use on tractors up to 125 horsepower with 540 rpm PTO. An optional 1,000 rpm gearbox is available as an upgrade.

A complete Multivator is made up of a frame assembly, a number of tillage heads, PTO shaft, and optional equipment as required. To price out a complete Multivator, add the price of the frame, PTO shaft and tillage heads together. Frame assemblies comprise the main toolbar; hex drive bar; gauge wheels; 540 rpm gearbox; three point hitch.

Standard equipment includes: steel gauge wheels; 4 blades per flange. FPSR tillage heads use #100 roller chain in an oil-bath chaincase. Ground clearance under the hex drive shaft is 20" on FPSR



### FPSR Frame Assemblies

Item Number	Model	Frame Width (in.)	Ground Clearance	Weight (lbs.)	List Price
M520320015	FPSR	66"	20"	443	\$6,735
M520320016	FPSR	90"	20"	488	\$6,945
M520320017	FPSR	132"	20"	655	\$7,385
M520320029	FPSR	180"	20"	821	\$8,555
M520320032	FPSR	192"	20"	875	\$9,635
M520320199	FPSR	240"	20"	987	\$14,230

### PTO Shaft (must order 1 per frame assembly)

14006642	Stanard size 6 PTO shaft	\$367
14106654	Size 6 PTO shaft with slip clutch	\$632
14116840	Size 8 PTO shaft with slip clutch (1000 RPM)	\$1,564

### FPSR Tillage Heads

Item Number	Model	Width	Clearance	Weight	No. Blades	List Price
M520070055	FPSR	12" - 16"	20"	205	8	\$2,555
M520070056	FPSR	18" - 22"	20"	240	16	\$2,825
M520070058	FPSR	24" - 32"	20"	280	24	\$3,085

### FPSR Granular Fertilizer Box Capacity

M540280010	FPSR	40"	300 lbs.	145	\$2,600
M540280011	FPSR	60"	450 lbs.	170	\$3,095
M540280012	FPSR	80"	600 lbs.	200	\$3,400

### FPSR Ridger

M540230008	FPSR ridger assembly (per head)	40	\$425
------------	---------------------------------	----	-------

### FPSR Options

Optional pneumatic gauge wheel upgrade (pair)	\$450
Optional 1,000 rpm gearbox upgrade	\$1,300



# Multivator

**Multivator Cultivator**  
**Model FPSRXA (high clearance model)**

Model FPSRXA Multivators are heavy series machines for higher horsepower tractors and larger field operations. For use on tractors up to 125 horsepower with 540 rpm PTO. An optional 1,000 rpm gearbox is available as an upgrade.



A complete Multivator is made up of a frame assembly, a number of tillage heads, PTO shaft and optional equipment as required. To price out a complete Multivator, add the price of the frame, PTO shaft, and tillage heads together.

Frame assemblies comprise the main toolbar; hex drive bar; gauge wheels; 540 rpm gearbox; three point hitch.

Standard equipment includes: steel gauge wheels; 4 blades per flange. FPSR tillage heads use #100 roller chain in an oil-bath chaincase. Ground clearance under the hex drive shaft is 32" on FPSRXA

**FPSRXA Frame Assemblies**

Item Number	Model	Frame Width (in.)	Ground Clearance	Weight (lbs.)	List Price
M520320024	FPSRXA	66"	32"	455	\$7,020
M520320025	FPSRXA	90"	32"	500	\$7,275
M520320026	FPSRXA	132"	32"	667	\$7,825
M520320027	FPSRXA	180"	32"	833	\$8,650
M520320034	FPSRXA	192"	32"	890	\$9,730
M520320207	FPSRXA	240"	32"	993	\$14,420

**PTO Shaft (must order 1 per frame assembly)**

14006642	Stanard size 6 PTO shaft	\$367
14106654	Size 6 PTO shaft with slip clutch	\$632
14116840	Size 8 PTO shaft with slip clutch (1000 RPM)	\$1,564

**FPSRXA Tillage Heads**

Item Number	Model	Width	Clearance	Weight	No. Blades	List Price
M520070079	FPSRXA	12" - 16"	32"	275	8	\$3,100
M520070080	FPSRXA	18" - 22"	32"	310	16	\$3,365
M520070144	FPSRXA	24" - 32"	32"	350	24	\$3,625

**FPSRXA Granular Fertilizer Box**

	Capacity	
M540280010	40"	300 lbs. 145
M540280011	60"	450 lbs. 170
M540280012	80"	600 lbs. 200

**FPSRXA Ridger**

M540230010	FPSRXA ridger assy (per head)	\$440
------------	-------------------------------	-------

**FPSRXA Options**

	Optional 1,000 rpm gearbox assembly	\$1,300
--	-------------------------------------	---------

