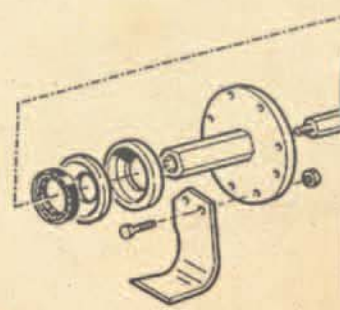


Multivator

The **Multivator** is a rotary powered cultivator for use in a wide variety of vegetable and field crops. Multivator is the premier name in rotary powered cultivation. The **Multivator** is custom built for all applications, and sold through a network of Multivator dealers across North America.



A **MULTIVATOR** is a high-clearance rotary tillage machine designed for inter-row cultivation of vegetable, nursery, fruit and field crops. Mounted on the three-point hitch of a tractor and powered by the tractor PTO, the **MULTIVATOR** transmits power to a selected number of rotary tiller heads each equipped with blades that cultivate the ground between

Use of a **MULTIVATOR** gives positive control over this important area between plant rows, reducing or eliminating the need for herbicides, and creating a soil condition that will absorb and retain moisture. The versatility

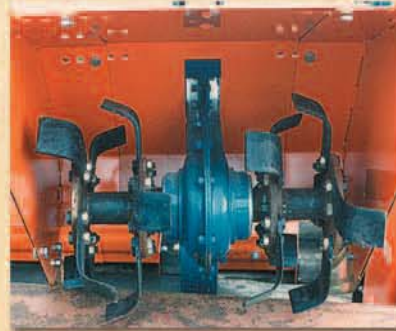
It also allows for inter-row spaces that may shrink as plants grow and expand into the row. There are three basic **MULTIVATOR** models to suit different tractors, varying ground conditions, and small, medium, or large



Model FL with 2 heads, clearing row middles during strawberry renovation



Model FP 66" frame with 2x12-16" tillage heads



Detail of the blades, model FP. Hubs are easily added or removed to change head width.

rows of growing crops. Weed growth is eliminated and crusted or compacted soils are transformed into a desirable tilth.

of the machine allows its use at all critical stages of plant development, in a wide variety of crops on differing row centers.

applications. The following table gives general specifications for these models. More details can be found in the product price list.



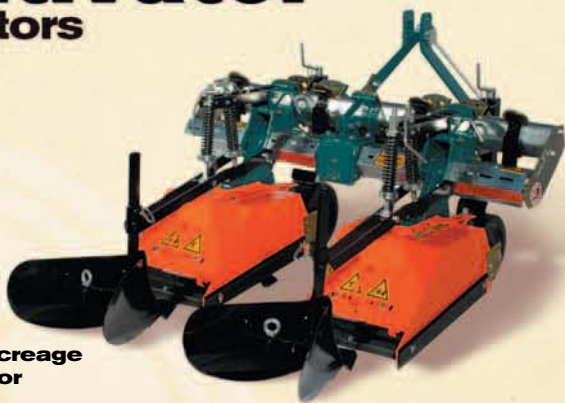
Explore the Full Line of

Multivator Cultivators

Model

FL

Small Acreage
Cultivator



Model

FLA

High Clearance
Cultivator



Model

FP

Medium Acreage
Cultivator



Model

FPSR

Commercial
Growing
Cultivator

PRODUCT FEATURES



SIMPLICITY



Simplicity – Tillage heads are mounted on the frame and secured by two bolts. A hexagonal bar drives all heads from a single gearbox. Each head floats independently to compensate for uneven ground, and extra down pressure may be applied to assist penetration in hard ground. Every machine comes with two adjustable gauge wheels to maintain frame height.



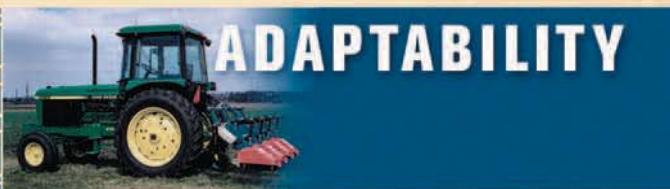
VERSATILITY



Versatility – Loosening the two securing bolts and sliding the head to the desired position adjusts the location of each head. Adding or removing blades and shielding easily changes the head size to another tillage width. Optional equipment includes ridge attachments that may be fitted behind each head for throwing tilled soil back on the ridge, and granular fertilizer boxes.



ADAPTABILITY



Adaptability – The **MULTIVATOR** can be used in a wide variety of specialty crops including lettuce, carrots, onions, spinach, and celery. It is used successfully in nursery stock, cotton, soybeans, perennials, and medicinal herbs, and is an essential renovation tool for many strawberry growers. If a crop is grown on flat land, on beds, or even on plastic, the versatile **MULTIVATOR** rotary tiller is the best implement to use for inter-row cultivation.

Model	HP Range	Ground Clearance	Min/Max Head Width	Hex Shaft Diameter	Drive-case Roller Chain Spec
FL	15-50 16"		5.5" 32"	30mm (1-1/8")	12B (#60HD)
FLA	15-50 20"		5.5" 32"	30mm (1-1/8")	12B (#60HD)
FP	25-100	20"	9" 32"	41mm (1-5/8")	16B (#80HD)
FPA	25-100	25"	9" 32"	41mm (1-5/8")	16B (#80HD)
FPXA	25-100	32"	9" 32"	41mm (1-5/8")	16B (#80HD)
FPSR	25-150	20"	12" 32"	50mm (2")	20B (#100HD)
FPSRXA	25-150	32"	12" 32"	50mm (2")	20B (#100HD)



**GENERAL
IMPLEMENT**
DISTRIBUTORS

Multivator

Multivator Cultivator

Model FL

Model FL Multivator is a lighter series machine designed for tractors under 50 horsepower. Due to the compact nature of the design, this model works very well with sub-compact tractors. The ground clearance under the hex drive bar is 16".

A complete Multivator is made up of a frame assembly, a number of tillage heads, PTO shaft and optional equipment as required. To price out a complete Multivator, To price out a complete Multivator, add the price of the frame, PTO shaft and tillage heads together.

Frame assemblies comprise the main toolbar; hex drive bar; gauge wheels; 540 rpm gearbox; three point hitch.

Standard equipment includes: steel gauge wheels; 4 blades per flange
FL tillage heads use #60 roller chain in an oil-bath chaincase



FL Frame Assemblies

Item Number	Model	Frame Width (in.)	Ground Clearance	Weight (lbs.)	List Price
M510320002	FL	66"	16"	260	\$3,160
M510320002XXN	**FL**	66"	16"	255	\$3,475
M510320004	FL	90"	16"	287	\$3,305
M510320004XXN	**FL**	90"	16"	285	\$3,615
M510320006	FL	132"	16"	364	\$3,870
M510320201	FL	158"	16"	475	\$4,390

** XXN Frames use extra narrow gearboxes for row centers less than 12"

PTO Shaft (must order 1 per frame assembly)

14006438	Stanard size 4 PTO shaft	\$308
14106438	Size 4 PTO shaft with slip clutch	\$462

FL Tillage Heads

Item Number	Model	Frame Width (in.)	Ground Clearance	Weight (lbs.)	No. Blades	List Price
M510070001	FL	5.5"-7"	16"	89	8	\$1,305
M510070002	FL	7"-10"	16"	89	8	\$1,295
M510070003	FL	12"-15"	16"	103	16	\$1,420
M510070004	FL	16"-20"	16"	121	24	\$1,490
M510070005	FL	20"-24"	16"	131	32	\$1,655
M510070006	FL	28"-32"	16"	149	40	\$1,805

FL/FLA Granular Fertilizer Box

		Capacity			
M530280001	FL/FLA	40"	300 lbs.	145	\$2,490
M530280002	FL/FLA	60"	450 lbs.	170	\$2,965
M530280003	FL/FLA	80"	600 lbs.	200	\$3,215

FL Ridger

M530230002	FL ridger assembly (per head)	30	\$345
------------	-------------------------------	----	-------

FL Options

M530090001	Steering guide	\$2,070
------------	----------------	---------



Multivator

Multivator Cultivator

Model FLA

Model FLA Multivator is a lighter series machine designed for tractors up to 50 horsepower.

The ground clearance under the hex drive bar is 20".

A complete Multivator is made up of a frame assembly, a number of tillage heads, PTO shaft and optional equipment as required. To price out a complete Multivator, add the price of the frame, PTO Shaft and tillage heads together.

Frame assemblies comprise the main toolbar; hex drive bar; gauge wheels; 540 rpm gearbox; three point hitch.

Standard equipment includes: steel gauge wheels; 4 blades per flange

FLA tillage heads use #60 roller chain in an oil-bath chaincase



FLA Frame Assemblies

Item Number	Model	Frame Width (in.)	Ground Clearance	Weight (lbs.)	List Price
M510320031	FLA	66"	20"	265	\$3,300
M510320031XXN	**FLA**	66"	20"	260	\$3,615
M510320032	FLA	90"	20"	293	\$3,440
M510320032XXN	**FLA**	90"	20"	290	\$3,755
M510320033	FLA	130"	20"	370	\$4,010
M510320030	FLA	158"	20"	480	\$4,530

** XXN Frames use extra narrow gearboxes for row centers less than 12"

PTO Shaft (must order 1 per frame assembly)

14006438	Stanard size 4 PTO shaft	\$308
14106438	Size 4 PTO shaft with slip clutch	\$462

FLA Tillage Heads

Item Number	Model	Width	Clearance	Weight	No. Blades	List Price
M510070013	FLA	5.5"-7"	20"	94	8	\$1,335
M510070014	FLA	7"-10"	20"	94	8	\$1,325
M510070015	FLA	12"-15"	20"	108	16	\$1,450
M510070016	FLA	16"-20"	20"	126	24	\$1,520
M510070017	FLA	20"-24"	20"	136	32	\$1,685
M510070018	FLA	28"-32"	20"	154	40	\$1,835

FLA Granular Fertilizer Box

		Capacity			
M530280001	FL/FLA	40"	300 lbs.	145	\$2,490
M530280002	FL/FLA	60"	450 lbs.	170	\$2,965
M530280003	FL/FLA	80"	600 lbs.	200	\$3,215

FLA Ridger

M530230003	FLA ridger assembly (per head)	30	\$355
------------	--------------------------------	----	-------

FLA Options

M530090002	Steering guide	\$1,840
	Optional pneumatic gauge wheel upgrade	\$450



Multivator

Multivator Cultivator

Model FP

Model FP Multivators are medium series machines, for 25-100 HP tractors. They are suited for larger vegetable farms, strawberry renovation, nurseries and field crops.

A complete Multivator is made up of a frame assembly, a number of tillage heads, PTO shaft and optional equipment as required. To price out a complete Multivator, add the price of the frame, PTO shaft and tillage heads together.

Frame assemblies comprise the main toolbar; hex drive bar; gauge wheels; 540 rpm gearbox; three point hitch.

Standard equipment includes: steel gauge wheels; 4 blades per flange. FP tillage heads use #80 roller chain in an oil-bath chaincase. Ground clearance under the hex drive shaft is 20".



FP Frame Assemblies

Item Number	Model	Frame Width (in.)	Ground Clearance	Weight (lbs.)	List Price
M520320011	FP	66"	20"	378	\$4,700
M520320012	FP	90"	20"	417	\$4,905
M520320013	FP	132"	20"	571	\$5,325
M520320028	FP	180"	20"	746	\$6,790
M520320031	FP	192"	20"	900	\$7,515

PTO Shaft (must order 1 per frame assembly)

14006642	Standard size 6 PTO shaft	\$367
14106654	Size 6 PTO shaft with slip clutch	\$632

FP Tillage Heads

Item Number	Model	Width	Clearance	Weight	No. Blades	List Price
M520070117	FP	9" - 11"	20"	150	8	\$1,970
M520070118	FP	12" - 16"	20"	158	8	\$1,960
M520070119	FP	18" - 22"	20"	180	16	\$2,220
M520070121	FP	24" - 32"	20"	207	24	\$2,475

FP Granular Fertilizer Box

	Capacity				
M540280007	40"	300 lbs.	145	\$2,510	
M540280008	60"	450 lbs.	170	\$2,990	
M540280009	80"	600 lbs.	200	\$3,265	

FP Ridger

M540230005	FP ridger assembly (per head)	40	\$380
------------	-------------------------------	----	-------

FP Options

M540090003	Steering guide	\$2,460
	Optional pneumatic gauge wheel upgrade	\$450



Multivator

Multivator Cultivator

Model FPA and FPXA (high clearance models)

Model FPA and FPXA Multivators are medium series machines, with higher ground clearance than the standard FP. They are recommended for applications such as nursery crops and ornamental grasses, where the crop is taller.

A complete Multivator is made up of a frame assembly, a number of tillage heads, PTO shaft and optional equipment as required. To price out a complete Multivator, add the price of the frame, PTO shaft and tillage heads together. Frame assemblies comprise the main toolbar; hex drive bar; gauge wheels; 540 rpm gearbox; three point hitch.

Standard equipment includes: steel gauge wheels; 4 blades per flange. FP tillage heads use #80 roller chain in an oil-bath chaincase. Ground clearance under the hex drive shaft is 25" on FPA; 32" on FPXA



FPA/FPXA Frame Assemblies

Item Number	Model	Frame Width (in.)	Weight (lbs.)	List Price
M520320035	FPA & FPXA	66"	386	\$4,795
M520320036	FPA & FPXA	90"	424	\$4,995
M520320037	FPA & FPXA	132"	579	\$5,420
M520320200	FPA & FPXA	180"	758	\$6,885
M520320033	FPA & FPXA	192"	925	\$7,605

PTO Options (must order 1 per frame assembly)

14006642	Standard size 6 PTO shaft	\$367
14106654	Size 6 PTO shaft with slip clutch	\$632

FPA/FPXA Tillage Heads

Item Number	Model	Width	Clearance	Weight	No. Blades	List Price
M520070199	FPA	9" - 11"	25"	164	8	\$2,280
M520070200	FPA	12" - 16"	25"	172	8	\$2,270
M520070201	FPA	18" - 22"	25"	193	16	\$2,530
M520070203	FPA	24" - 32"	25"	219	24	\$2,780
M520070123	FPXA	12" - 16"	32"	180	8	\$2,365
M520070124	FPXA	18" - 22"	32"	200	16	\$2,625
M520070126	FPXA	24" - 32"	32"	225	24	\$2,880

FPA/FPXA Granular Fertilizer Box

Item Number	Model	Capacity	Weight	List Price	
M540280007	FP	40"	300 lbs.	145	\$2,510
M540280008	FP	60"	450 lbs.	170	\$2,990
M540280009	FP	80"	600 lbs.	200	\$3,265

FPA/FPXA Ridger

M540230006	FPA ridger assembly (per head)	43	\$385
M540230007	FPXA ridger assembly (per head)	48	\$390



Multivator

Multivator Cultivator

Model FPSR

Model FPSR Multivators are heavy series machines for higher horsepower tractors and larger field operations.

For use on tractors up to 125 horsepower with 540 rpm PTO. An optional 1,000 rpm gearbox is available as an upgrade.

A complete Multivator is made up of a frame assembly, a number of tillage heads, PTO shaft, and optional equipment as required. To price out a complete Multivator, add the price of the frame, PTO shaft and tillage heads together. Frame assemblies comprise the main toolbar; hex drive bar; gauge wheels; 540 rpm gearbox; three point hitch.

Standard equipment includes: steel gauge wheels; 4 blades per flange. FPSR tillage heads use #100 roller chain in an oil-bath chaincase. Ground clearance under the hex drive shaft is 20" on FPSR



FPSR Frame Assemblies

Item Number	Model	Frame Width (in.)	Ground Clearance	Weight (lbs.)	List Price
M520320015	FPSR	66"	20"	443	\$6,540
M520320016	FPSR	90"	20"	488	\$6,785
M520320017	FPSR	132"	20"	655	\$7,170
M520320029	FPSR	180"	20"	821	\$8,305
M520320032	FPSR	192"	20"	875	\$9,355
M520320199	FPSR	240"	20"	987	\$13,815

PTO Shaft (must order 1 per frame assembly)

14006642	Stanard size 6 PTO shaft	\$367
14106654	Size 6 PTO shaft with slip clutch	\$632
14116840	Size 8 PTO shaft with slip clutch (1000 RPM)	\$1,564

FPSR Tillage Heads

Item Number	Model	Width	Clearance	Weight	No. Blades	List Price
M520070055	FPSR	12" - 16"	20"	205	8	\$2,480
M520070056	FPSR	18" - 22"	20"	240	16	\$2,740
M520070058	FPSR	24" - 32"	20"	280	24	\$2,995

FPSR Granular Fertilizer Box

	Capacity	Weight	List Price
M540280010	40"	300 lbs.	145
M540280011	60"	450 lbs.	170
M540280012	80"	600 lbs.	200

FPSR Ridger

M540230008	FPSR ridger assembly (per head)	40	\$415
------------	---------------------------------	----	-------

FPSR Options

	Optional pneumatic gauge wheel upgrade (pair)	\$450
	Optional 1,000 rpm gearbox upgrade	\$1,300



Multivator

Multivator Cultivator

Model FPSRXA (high clearance model)

Model FPSRXA Multivators are heavy series machines for higher horsepower tractors and larger field operations. For use on tractors up to 125 horsepower with 540 rpm PTO. An optional 1,000 rpm gearbox is available as an upgrade.

A complete Multivator is made up of a frame assembly, a number of tillage heads, PTO shaft and optional equipment as required. To price out a complete Multivator, add the price of the frame, PTO shaft, and tillage heads together.

Frame assemblies comprise the main toolbar; hex drive bar; gauge wheels; 540 rpm gearbox; three point hitch.

Standard equipment includes: steel gauge wheels; 4 blades per flange. FPSR tillage heads use #100 roller chain in an oil-bath chaincase. Ground clearance under the hex drive shaft is 32" on FPSRXA



FPSRXA Frame Assemblies

Item Number	Model	Frame Width (in.)	Ground Clearance	Weight (lbs.)	List Price
M520320024	FPSRXA	66"	32"	455	\$6,815
M520320025	FPSRXA	90"	32"	500	\$7,065
M520320026	FPSRXA	132"	32"	667	\$7,595
M520320027	FPSRXA	180"	32"	833	\$8,400
M520320034	FPSRXA	192"	32"	890	\$9,445
M520320207	FPSRXA	240"	32"	993	\$14,000

PTO Shaft (must order 1 per frame assembly)

14006642	Standard size 6 PTO shaft	\$367
14106654	Size 6 PTO shaft with slip clutch	\$632
14116840	Size 8 PTO shaft with slip clutch (1000 RPM)	\$1,564

FPSRXA Tillage Heads

Item Number	Model	Width	Clearance	Weight	No. Blades	List Price
M520070079	FPSRXA	12" - 16"	32"	275	8	\$3,010
M520070080	FPSRXA	18" - 22"	32"	310	16	\$3,270
M520070144	FPSRXA	24" - 32"	32"	350	24	\$3,520

FPSRXA Granular Fertilizer Box

	Capacity	
M540280010	40"	300 lbs. 145
M540280011	60"	450 lbs. 170
M540280012	80"	600 lbs. 200

FPSRXA Ridger

M540230010	FPSRXA ridger assy (per head)	\$425
------------	-------------------------------	-------

FPSRXA Options

	Optional 1,000 rpm gearbox assembly	\$1,300
--	-------------------------------------	---------

