

# Axis Tool Arm



## FEATURES

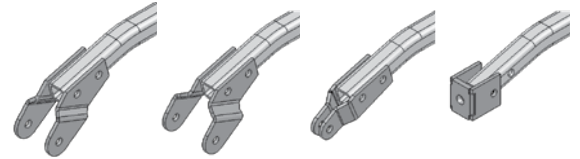
- Retractable Counterweight Shel
- Hydraulic Tool Rotation
- Hydraulic Tool Lift
- Transport Lock



*Rotary Cutter not included.*

## Stabilizer Arm to Cutter

Various attachment brackets are supplied with the Axis Toolbar to attach the Stabilizer Bar to the cutter. All four adaptors are included.



**Shown in order:** Rotary Cutter, Kodiak, Fork Rear Wheel Style with 180° Wheel Adjuster, Fork Rear Wheel Style with Flat Wheel Adjuster

## SPECIFICATIONS

Model	AXIS4	AXIS5-6
Weight (LBS.)	751	900
Offset	60"	84"
3PH Mount	Cat. 1	Cat. 1 & 2
Minimum Tractor Weight (LBS.)	2,900	5,800
Maximum Tool Weight (LBS.)	480	800
4' Rotary Cutter (Not Included)		req. min. 30 HP
5' Rotary Cutter (Not Included)		req. min. 60 HP
6' Rotary Cutter (Not Included)		req. min. 80 HP
Cutting Angle Cyl. Ext.		55°
Cutting Angle Cyl. Ret.		90°
Tractor Remotes Req.		2
Protection	Shear Bolt	Shear Bolt
List Price	\$8,890.00	\$9,840.00





## FEATURES

- Maximum brush diameter 1
- 7 year limited warrant
- Cat. 1 3P
- Adjustable cutting height 2" – 10"
- Floating top link maintains cutting height
- Solid segmented wheels for no flat running
- 2 blade design
- Standard front and rear rubber guard
- Deck protection rim
- Fixed skid shoe

## OPTIONS

- Light duty slip clutch for driveline protection
- Chain curtain

## SPECIFICATIONS

Model	PRC48LD	PRC48	PRC54	PRC60	PRC66	PRC72	PRC72HD
Shipping Weight (LBS.)	320	380	430	500	560	625	635
3PH Mount	Cat. 1	Cat. 1	Cat. 1	Cat. 1	Cat. 1	Cat. 1	Cat. 1
Cutting Height	2" - 10"	2" - 10"	2" - 10"	2" - 10"	2" - 10"	2" - 10"	2" - 10"
Cutting Path	48"	48"	54"	60"	66"	72"	72"
Max Brush Diameter	1"	1"	1"	1"	1"	1"	1"
Tip Speed (Ft/Min)	13100	13100	14725	12462	13708	14955	14955
Wheels	16" (Air Filled)			16" (Segmented)			
Blades	1/2" x 3"	1/2" x 3"	1/2" x 3"	1/2" x 3"	1/2" x 3"	1/2" x 3"	1/2" x 3"
Tractor HP (min)	20	20	22	30	40	50	50
PTO RPM	540	540	540	540	540	540	540
Gearbox Rating	40	40	40	60*	60*	60*	75*
Deck	12 ga	12 ga	12 ga	12 ga	12 ga	12 ga	12 ga
Stump Jumper	Yes	Yes	Yes	Yes	Yes	Yes	Yes
Rubber Guard	Std.	Std.	Std.	Std.	Std.	Std.	Std.
Protection (Std./Opt.)	Shear Pin / Slip Clutch	Shear Pin / Slip Clutch	Shear Pin / Slip Clutch	Shear Pin / Slip Clutch	Shear Pin / Slip Clutch	Shear Pin / Slip Clutch	Slip Clutch (Std.)
List Price (Shear Pin)	PRC48LD \$2,850.00	PRC48 \$2,938.00	PRC54 \$2,980.00	PRC60 \$3,020.00	PRC66 \$3,365.00	PRC72 \$3,840.00	PRC72HD
List Price (Slip Clutch)	PRC48LDSC \$3,025.00	PRC48SC \$3,145.00	PRC54SC \$3,180.00	PRC60SC \$3,215.00	PRC66SC \$3,655.00	PRC72SC \$4,210.00	PRC72HDSC \$4,510.00

\*Based on field performance



**Chain Guards** *For all 3PH Models.  
Includes both front and back chains.*

Part # (Chain)	List Price
PRC48CHAIN	\$480.00
PRC60CHAIN	\$555.00
PRC66CHAIN	\$635.00
PRC72CHAIN	\$715.00



**Slip Clutch**

Part #	Description	List Price
PRCSC	Optional Light Duty Slip Clutch	\$475.00

# 3PH Rotary Cutters - 700 Series



## FEATURES

- 7" Deck Height
- Maximum brush diameter 2
- 7 year limited warrant
- Cat. 1 3P
- Adjustable cutting height 1.5" – 13"
- Floating top lin
- Solid segmented wheel
- 2 blade design with stump jumpe
- Standard front and rear rubber guard
- Deck protection rin
- Stump jumpe
- Fixed skid sho

## OPTIONS

- Light duty slip clutch for driveline protectio
- Chain curtain

## SPECIFICATIONS

Model	MKRC748	MKRC760	MKRC766	MKRC772	MKRC772HD	MKRC784HD
<b>Cut Width</b>	48"	60"	66"	72"	72"	84"
<b>Weight (LBS.)</b>	420	535	605	640	730	840
<b>Hitch</b>	Cat. 1 Quick Hitch Compatible					
<b>Cutting Height</b>	1.5" - 13" / 10 Positions					
<b>Max Brush Diameter</b>	2"					
<b>Tip Speed (Ft/Min)</b>	13100	12462	13708	14955	15260	17803
<b>Wheels</b>	16" Segmented					X2
<b>Blades</b>	1/2" x 3"					
<b>Tractor HP (min)</b>	22	30	40	50	50	60
<b>PTO RPM</b>	540 RPM	540 RPM	540 RPM	540 RPM		
<b>Gearbox Rating *</b>	40	60	60	60	75	75
<b>Deck</b>	10 ga	10 ga	10 ga	10 ga	10 ga	10 ga
<b>Deck Height</b>	7"	7"	7"	7"	7"	7"
<b>Skirt Thickness</b>	3/16"	3/16"	3/16"	3/16"	3/16"	3/16"
<b>Stump Jumper</b>	Yes (Round)	Yes (Round)	Yes (Round)	Yes (Round)		
<b>Rubber Guard</b>	Std.	Std.	Std.	Std.	Std.	Std.
<b>Protection</b>	Shear Pin	Shear Pin	Shear Pin	Shear Pin	Slip Clutch	Slip Clutch
<b>List Price (Shear Pin)</b>	MKRC748 \$3,055.00	MKRC760 \$3,290.00	MKRC766 \$3,655.00	MKRC772 \$4,150.00	N/A	N/A
<b>List Price (Slip Clutch)</b>	MKRC748S \$3,295.00	MKRC760S \$3,580.00	MKRC766S \$3,940.00	MKRC772S \$4,410.00	\$4,210.00	\$6,755.00

\* Based on field performance



### Chain Guards *For all 3PH Models. Includes both front and back chains.*

Part # (Chain)	List Price
PRC48CHAIN	\$480.00
PRC60CHAIN	\$555.00
PRC66CHAIN	\$635.00
PRC72CHAIN	\$715.00

### Slip Clutch

Part #	Description	List Price
PRCSC	Optional Light Duty Slip Clutch	\$475.00

# 3PH Rotary Cutters Plus



## FEATURES

- Maximum brush diameter 2
- 7 year limited warrant
- Cat. 1 & Cat. 2 3P
- Draw bar hitch (PRCPLUS120)
- Adjustable cutting height 2" – 10"
- Floating top link maintains cutting heigh
- Solid segmented wheel  
(PRCPLUS60 – PRCPLUS96)
- Pneumatic wheels (PRCPLUS120)
- 3 blade design with stump jumpe
- Standard front and rear rubber guard
- Deck protection rin
- Slip clutch to protect the drive lin
- Bolt on skid sho

## OPTIONS

- Chain curtain

### Blade Assembly



### Floating Top Link



### Segmented Wheel



### Slip Clutch



## SPECIFICATIONS

Model	PRCPLUS60	PRCPLUS72	PRCPLUS84	PRCPLUS96	PRCPLUS120	PRCPLUS120-3PH
Shipping Weight (LBS.)	595	775	1045	1530	2320	2045
Hitch Type	Cat. 1 & 2 Quick Tach compatible			Draw Bar Hitch		Cat. 2
Cutting Height	2" - 10"	2" - 10"	2" - 10"	2" - 10"	2" - 10"	2" - 10"
Cutting Path	60"	72"	84"	96"	120"	120"
Max Brush Diameter	2"	2"	2"	2"	2"	2"
Tip Speed (Ft/Min)	12,462	15,260	17,803	16,500	14,500	14,500
Wheel Type (Qty.)	16" Segmented (1)	16" Segmented (1)	16" Segmented (2)	16" Segmented (2)	16" Pneumatic (2)	16" Pneumatic (2)
Blades	3 - 1/2" x 3"	3 - 1/2" x 3"	3 - 1/2" x 3"	3 - 1/2" x 3"	6 - 1/2" x 4"	6 - 1/2" x 4"
Tractor HP (min)	30-40	60	60	80	80	80
PTO RPM	540	540	540	540	540	540
Gearbox Rating *	75 HP	75 HP	90 HP	100 HP	120 HP	120 HP
Deck	3/16"	3/16"	3/16"	3/16"	9GA	9GA
Stump Jumper	Yes	Yes	Yes	Yes	Yes	Yes
Protection	Slip Clutch	Slip Clutch	Slip Clutch	Slip Clutch	Slip Clutch	Slip Clutch
List Price	\$4,415.00	\$5,380.00	\$7,570.00	\$11,515.00	\$18,775.00	\$15,390.00

\* Based on field performance



### CHAIN GUARDS *For all 3PH Models. Includes both front and back chains.*

Part # (Chain)	List Price
PRC60CHAIN	\$555.00
PRC72CHAIN	\$715.00
PRC84CHAIN	\$810.00
PRC96CHAIN	\$855.00
PRC120CHAIN	\$970.00

### DRAW BAR KIT

For 84" & 96" models. Kit consists of components shown in black in this image; red components for illustration only.

Part #	List Price
PRCDB84-96	\$3,395.00



# Rotary Cutters - Wing



## OPTIONS

Part #	List Price
Walking Tandem Axle - one pair (4 wheels)	\$1,390.00
Solid Wheel	\$760.00

## FEATURES

- 15 dual wing rotary cutter
- 4 heavy duty gearboxes, each covered with 7 year limited warranty
- Transport lock for each wing
- 1.5" diameter cutting capacity
- Each wing can float to conform to ground contours

## SPECIFICATIONS

Model	PW180
Shipping Weight (LBS.)	4,400
3PH Mount	Draw Bar Hitch
Cutting Height	3" - 15"
Cutting Path	180"
Max Brush Diameter	1.5"
Overall Width (Wings Down)	184"
Folded Width (Wings Up)	78"
Tip Speed (Ft/Min)	15,100 ft/min on Wings 14,850 ft/min on center
Wheels (Pneumatic)	21"
Blades	9 blades 1/2" x 4"
Tractor HP (min)	75HP
PTO RPM	540
Gearbox Rating (Wing)	140 HP
Gearbox Rating (Center)	105 HP
Gearbox Rating (Divider)	87 HP
Deck	3/16"
Stump Jumper	Yes
Protection	Independent Slip Clutch on Each Spindle
Wing Float Range(degrees)	2 down and 33 up
List Price	\$35,175.00
with Walking Tandem Axle	\$36,565.00
with Solid Wheels	\$35,935.00







## **HEAVY DUTY 10" CUT CAPACITY**

Easily power through dense brush, woody vegetation even 10 inch diameter trees across fields, forests and trails.



## **OVERSIZED 1" THICK ROTOR**

78" diameter oversized rotor is manufactured using a 1" thick steel plate.



## **4 REPLACEABLE FLAIL KNIVES**

Mounted on the rotor are 4 replaceable pivoting flail knives designed to deliver maximum centrifugal velocity and shear force on every rotation.



## **DIRECT MOUNTED MOTOR**

The hydraulic radial piston direct mounted motor and heavy duty bearing assembly deliver tip speeds of up to 20,000 ft. per minute and produce powerful torque at lower speeds for continuous cutting and faster recovery.

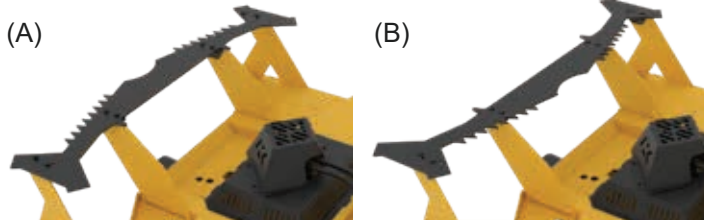
**EXTREME DUTY**

# BRUSH CUTTER



## FEATURES

- 78" Brush Cutter - Skid Steer attachmen  
- 86.5" Machine W
- 10" cut capacit
- Radial Piston Motor (4 pkgs up to 40GPM  
- Recommend 20  
- Hig Torque capability at low speeds  
- Up to 4000psi operating pres
- Heavy duty 1" cutting bar; 4 cutting blade  
- Optional bolt-on insert
- Tip speed of 20,000 ft/min
- 1/4" deck thicknes
- Replaceable skid shoe
- 2200 LBS approximate weigh
- Reversible push bar (trees/brush/grass)
- **7 year limited consumer warranty**  
**1 year limited commercial warranty**



## REVERSIBLE FRONT PUSH BAR

One side (A) has aggressive teeth for accurate pushing and directional control of larger trees. The reverse side (B) is smooth, intended for flattening dense underbru



## OPTIONAL BOLT-ON MULCHING KNIVES

Bolt-on mulching knives go on the bottom of the rotor to effortlessly mulch though stumps and logs.



## OPTIONAL CARBIDE CHIPPER KNIVES

Another option for mulching stumps and logs are the optional carbide tipped mulching knives.

## OPTIONS

Part #	List Price
BCH78XD-BK - BOLT ON MULCHING KNIFE KIT	\$870.00
BCH78XD-MK - CARBIDE TIP CHIPPER KNIFE KIT	\$755.00

## SPECIFICATIONS

Model	BCH78XD
Description	78" Brush Cutter
Machine Width	86.5"
Cutting Path	78"
Max Brush Diameter	10"
Radial Piston Motor	4 pkgs up to 40GPM
Recommended GPM	20+GPM
Torque	Higher Torque capability at low speeds
Operating Pressure	Up to 4000 psi
Blades	4 blades
Heavy Duty Cutting Bar	1"
Tip Speed	20,000 ft/min
Deck Thickness	1/4"
Shipping Weight (LBS.)	2,200
List Price	\$18,700.00



# Finishing Mowers



Pictured: Rear Discharge Model

## FEATURES

- 7 year limited warranty
- Cat. 1 hitc
- 4 solid rubber tire
- Floating end lin
- Taper lock pulleys

## SPECIFICATIONS

Model	PFM48RD	PFM60RD	PFM72RD	PFM90RD
Cutting Width	48"	60"	72"	90"
Overall Width	50"	62"	74"	93"
Weight (LBS.)	370	435	525	714
Acres/Hr@5 MPH	2.43	3.03	3.63	4.57
HP Required	14/20	20/25	25/30	30/40
3PH Mount	Cat. 1	Cat. 1	Cat. 1	Cat. 1
RPM @ PTO Shaft	540	540	540	540
Number of Blades	3	3	3	5
Tip Speed (Ft/Min)	15,660	18,000	16,850	16,288
Wheels	Solid Rubber Wheel	Solid Rubber Wheel	Solid Rubber Wheel	Solid
Deck Thickness	10 GA	10 GA	3/16"	3/16"
Cutting Height	2" - 5"	2" - 5"	2" - 5"	2" - 5"
List Price	\$4,810.00	\$5,505.00	\$6,275.00	\$7,925.00

