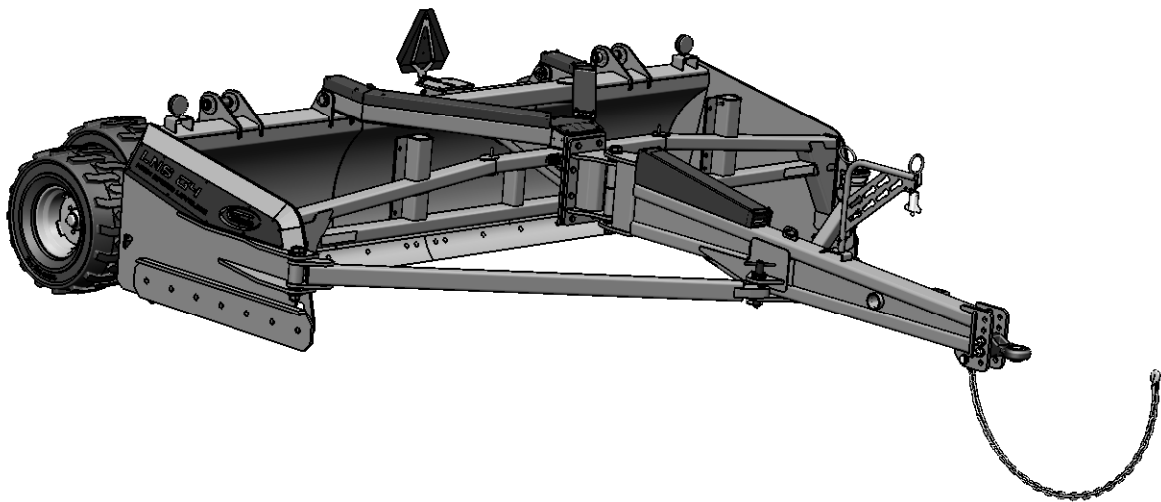




Ck bYffg'a Ubi U



@ B8 '@J9 @F' @BG'; ('\$fz%&fz% fz% fi
B\$) %!\$\$\$\$%žB\$) %&!\$\$\$\$' žB\$) % !\$\$\$\$ (žB\$) % !\$\$\$\$&



Table of contents

Introduction	4
Security	5
General specification	10
Parts (for LNS land leveler only)	
General Assembly	13
Land leveler frame	16
Swing Arm	19
Standard articulated tandem kit	20
Double articulated tandem kit (to be continued)	21
Option Scarifier teeth ass LNS G4 16'	24
Option GPS POST KIT	26
Option Hand hitch	27
Hydraulics hoses Assembly	29
Maintenance	33
Warranty	34
Product Registration	36



Congratulations on your purchase of your new **S Houle inc,** equipment!

This equipment will advantageously complement your agricultural machinery. It has been designed and built specifically for an agricultural market that is always in need of more efficient, better performing equipment.

This **Owner's Manual** is your principal reference in regards to your new equipment. To ensure your equipment delivers many years of quality use, it is important that you follow the use and maintenance guidelines set out in this manual. We urge you and those who will be using and/or performing maintenance on this equipment to ensure that **you have read and understood the contents of this manual prior to first use.**

Please keep this **Owner's Manual** within reach so that you may quickly consult it, as often as necessary. In case of ownership transfer, please ensure that you also remit this manual to the new owner or user.

Should you have any questions, or to obtain more information or additional copies of this manual, please contact us at:

S Houle Inc.

300 Industrial Boulevard
St-Germain-de-Grantham, Qc. Canada J0C 1K0
Tel.: (819) 395-4380 Fax: (819) 395-5516
Toll Free: 1-888-404-4380
Email: info@shoule.com
Web: www.shoule.com

Locate this symbol – it could save your life

This symbol is the standard safety symbol. You will find it on most of the decals on your equipment. It is also used throughout this manual.

This symbol is used mainly to draw your attention and to warn you of possible dangers and/or potential injuries.



It is vital that you read and understand completely the following instructions and safety rules prior to using your equipment.



The safety symbol accompanied by the word “DANGER” indicates an immediate danger capable of causing serious injury or death.



The safety symbol accompanied by the word “WARNING” indicates a potential danger capable of causing serious injury or death.



The safety symbol accompanied by the word “CAUTION” indicates a potential danger capable of causing injury.

Being well informed is your best protection against accidents. It is therefore important that you give particular attention to the safety guidelines presented in this manual.

Think SAFETY! Work SAFELY!



As the owner of this equipment, you are responsible for the safety of its users and those who are responsible for its maintenance. You and any other person using or performing maintenance on this equipment must be familiar with its operation and maintenance, as well as the safety measures contained in this manual. Having safe working practices guarantees a safer work environment.

The owner of this equipment must inform any user of all instructions related to proper operation and use of this equipment, prior to first use.

The user must read, understand and respect all operating and safety instructions contained in this manual. A user who is unaware or ignores the operating and safety instructions contained herein is not qualified to operate this equipment, and exposes him/herself and bystanders to possible serious injury and or death.

Do not in any way modify this equipment. Unauthorized modifications could impair the proper functioning and/or safety of this equipment and possibly affect its useful life as well.

General Safety Measures

1. Read and understand all operating and safety instructions and guidelines contained in this manual prior to using, maintaining or adjusting the equipment.
2. Ensure all safety guards and shields are properly installed prior to using the equipment.
3. Always have a first aid kit within reach, and know how to use it.
4. Always have a fire extinguisher within reach, and know how to use it.
5. Wear appropriate safety gear, such as: hard hat, safety boots, safety goggles, gloves, ear plugs, etc.
6. Clear the area of people, especially children, prior to engaging the equipment.

Operating Safety

In addition to reading and fully understanding this manual, you should:



1. Lower the equipment, stop the tractor's engine, set controls to neutral, engage the emergency brake, remove the tractor's ignition key and wait for all moving parts to come to a full stop prior to detaching or servicing the equipment.
2. Keep hands, feet, hair and all clothing away from all moving parts and/or rotating parts.
3. Do not allow bystanders on the equipment or the tractor.
4. Do not remove protective guards or shields. Ensure they are in place and properly attached.
5. Clear the area of all people, especially small children, prior to engaging the equipment and/or the tractor.
6. Be extremely cautious while servicing or while near high pressure hydraulic systems. Ensure all components are fully sealed and in good working order prior to operating the equipment.
7. Ensure all reflectors, lights and the safety triangle are clean prior to transportation on public roads. Check with local authorities to ensure you are compliant with all lighting requirements.

Maintenance Safety

In addition to reading and fully understanding this manual, you should:

1. Lower the equipment, stop the tractor's engine, set controls to neutral, engage the emergency brake, remove the tractor's ignition key and wait for all moving parts to come to a full stop prior to detaching or servicing the equipment.
2. Keep hands, feet, hair and all clothing away from all moving parts.
3. Clear the area of all people, especially small children, prior to engaging the equipment and/or the tractor.
4. Place safety stands or blocks underneath the frame prior to working underneath the equipment.
5. Install the locking devices on the bucket's cylinders before working underneath the equipment.



5. Be extremely cautious while servicing or while near high pressure hydraulic systems. Ensure all components are fully sealed and in good working order prior to operating the equipment. Wear appropriate safety gear to protect your eyes and hands. Use a piece of wood or cardboard as a shield when examining a hose or fitting for a leak.
6. Always relieve pressure prior to disconnecting or servicing hydraulics.
7. Always use original parts when any need replacing.
8. Do not in any way modify this equipment, its components or its intended use. Fabrication S.Houle inc. will not be held responsible should breakage or injury occur as a result of using any non-approved parts or accessories.
9. Do not operate equipment that is defective or that has parts missing.
10. Inspect nuts and bolts regularly and ensure they are tightly secured.

Hydraulic System Safety

In addition to reading and fully understanding this manual, you should:

1. Always set the hydraulic controls to neutral prior to disassembling the hydraulic system.
2. Be extremely cautious while servicing or while near high pressure hydraulic systems. Ensure all components are fully sealed and in good working order prior to operating the equipment. Wear appropriate safety gear to protect your eyes and hands. Use a piece of wood or cardboard as a shield when examining a hose or fitting for a leak.

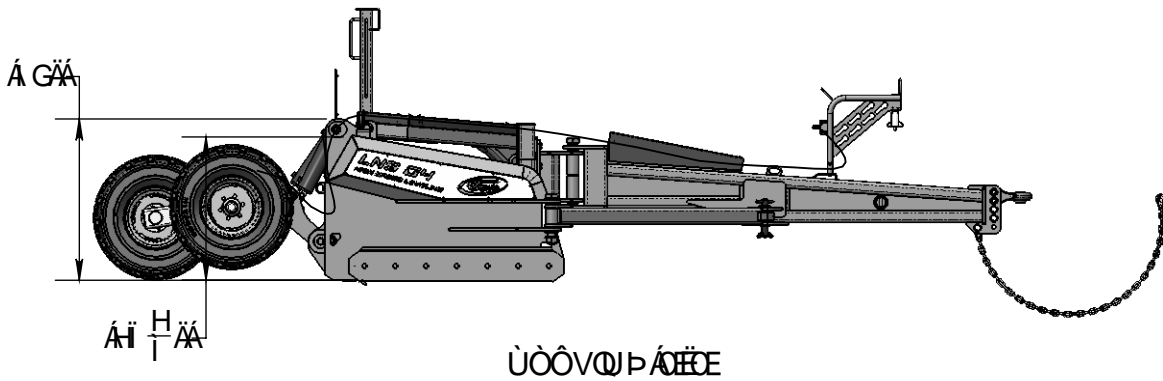
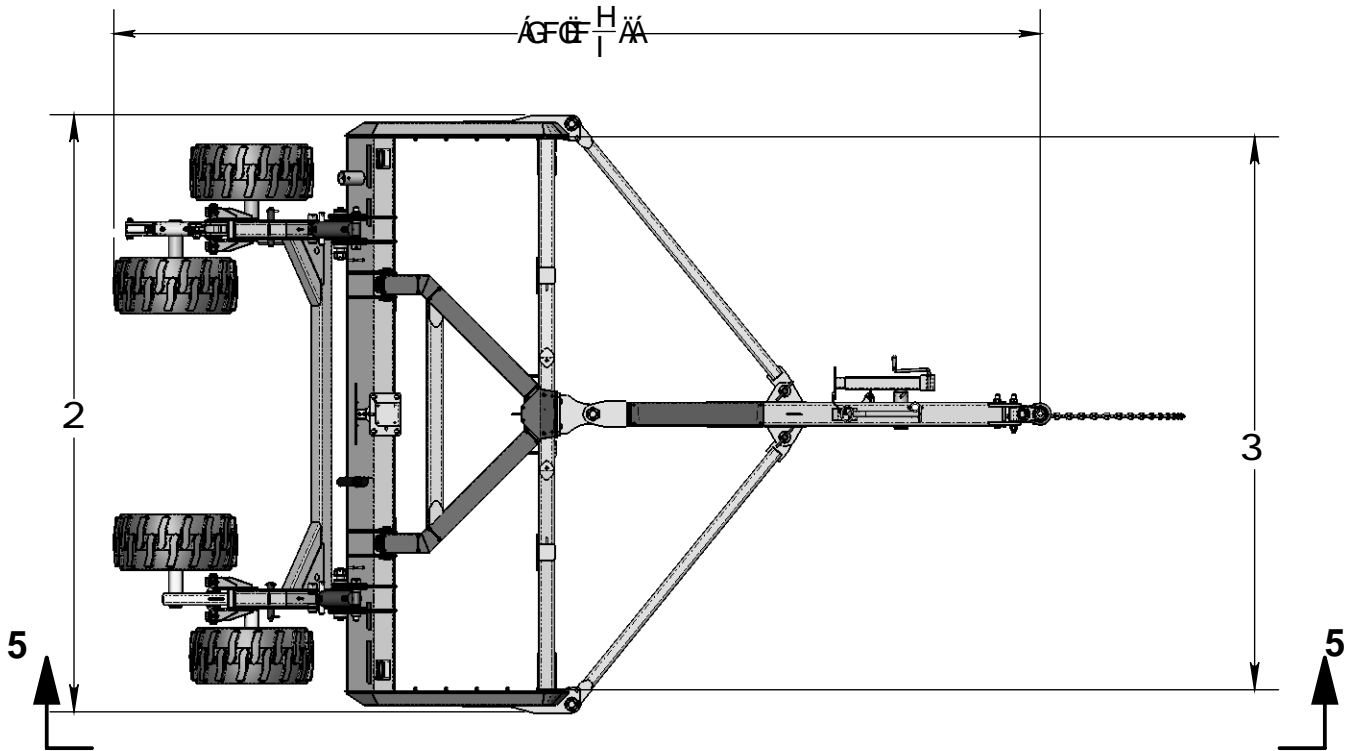


Storage

After the season's use, completely inspect all major systems of the machine. Repair or replace any worn or damaged components to prevent unnecessary down time at the beginning of next season. The machine should be carefully prepared for storage to insure that all dirt, mud, debris and moisture has been removed.

Follow this procedure when preparing for storage:

1. Wash the entire machine thoroughly using a water hose or pressure washer to remove all dirt, mud debris or residue.
2. Inspect all moving or rotating parts to see if anything has become entangled in them. Remove the entangled material.
3. Lubricate all grease fittings to remove any moisture in the bearings.
4. Run the machine slowly for 1 minute to distribute lubricant to all surfaces.
5. Inspect all hydraulic hoses, fittings, lines and couplers. Tighten any loose fittings. Replace any hose that is badly cut, nicked or abraded or is separating from the crimped end of the fitting.
6. Touch up all paint nicks and scratches to prevent rusting.
7. Oil the exposed rams on the hydraulic cylinders to rusting.
8. Select an area that is dry, level and free of debris.
9. Store the equipment in an area well away from human activity.
10. Store the equipment in the lowered position.
11. Do not allow children to play near the stored equipment.



ÙÒÒVQIPÁÏË

ÖQ ÒPÙQIP	þé FËËËËËF	þé FËËËËËH	þé FËËËËË	þé FËËËËËG
ÖQ ÒPÙQIPÁÖÄ	FËËÄ	FËËÄ	FËÄ	FËÄ
ÖQ ÒPÙQIPÁÖÄ	FFËÄ	FHËÄ	FËÄ	FËÄ



General Specification					
Model		LNS-10	LNS-12	LNS-14	LNS-16
Box volume	PI^3 (Yard)	107(3.96)	120 (4.44)	140 (5.19)	160 (5.93)
Box interior dimension					
Width	PI	10	12	14	16
Height	PO	38	38	38	38
Length	PO	44	44	44	44
External dimension working position					
Width	PI	11	13	15	17
Height	PO	45	45	45	45
Length	PI	21.25	21.25	21.25	21.25
Outside dimension transport position					
Ground clearance height	po	no transport kit	no transport kit	no transport kit	no transport kit
Width on the road	pi - po	no transport kit	no transport kit	no transport kit	no transport kit
Length	pi - po	no transport kit	no transport kit	no transport kit	no transport kit
hydraulic					
Max Pressure	PSI	3000	3000	3000	3000
Basic Land leveler function	N of Hydraulic Function	2	2	2	2
Tandem function Right (option)	N of Hydraulic Function	1	1	1	1
Decompaction teeth function (option)	N of Hydraulic Function	1	1	1	1
Transport Kit Function (option)	N of Hydraulic Function	no transport kit	no transport kit	no transport kit	no transport kit
Tandem tire					
Tire BKT TR 315 31 X 15.5-15	Available tire type	X	X	X	X
Tire BKT AW705 15.0/55-17 18PRTL LABOURER+17X13X8VG BKT	Available tire type				
Tire BKT TR882 400/60-15.5 18PRTL SGL+15.5X13X8VG BKT	Available tire type				
Tire BKT FLOTATION 648 400/60-22.5 16PRTL SGL+22.5X11.75X8 VG	Available tire type				
425/65R22.5 USE (Truck) (8 Bolts)	Available tire type				
425/65R22.5 New (Truck) (8 Bolts)	Available tire type				
Tire BKT FLOTATION 648 500/50/22.5 16PRTL SGL+22.5X16X8	Available tire type				



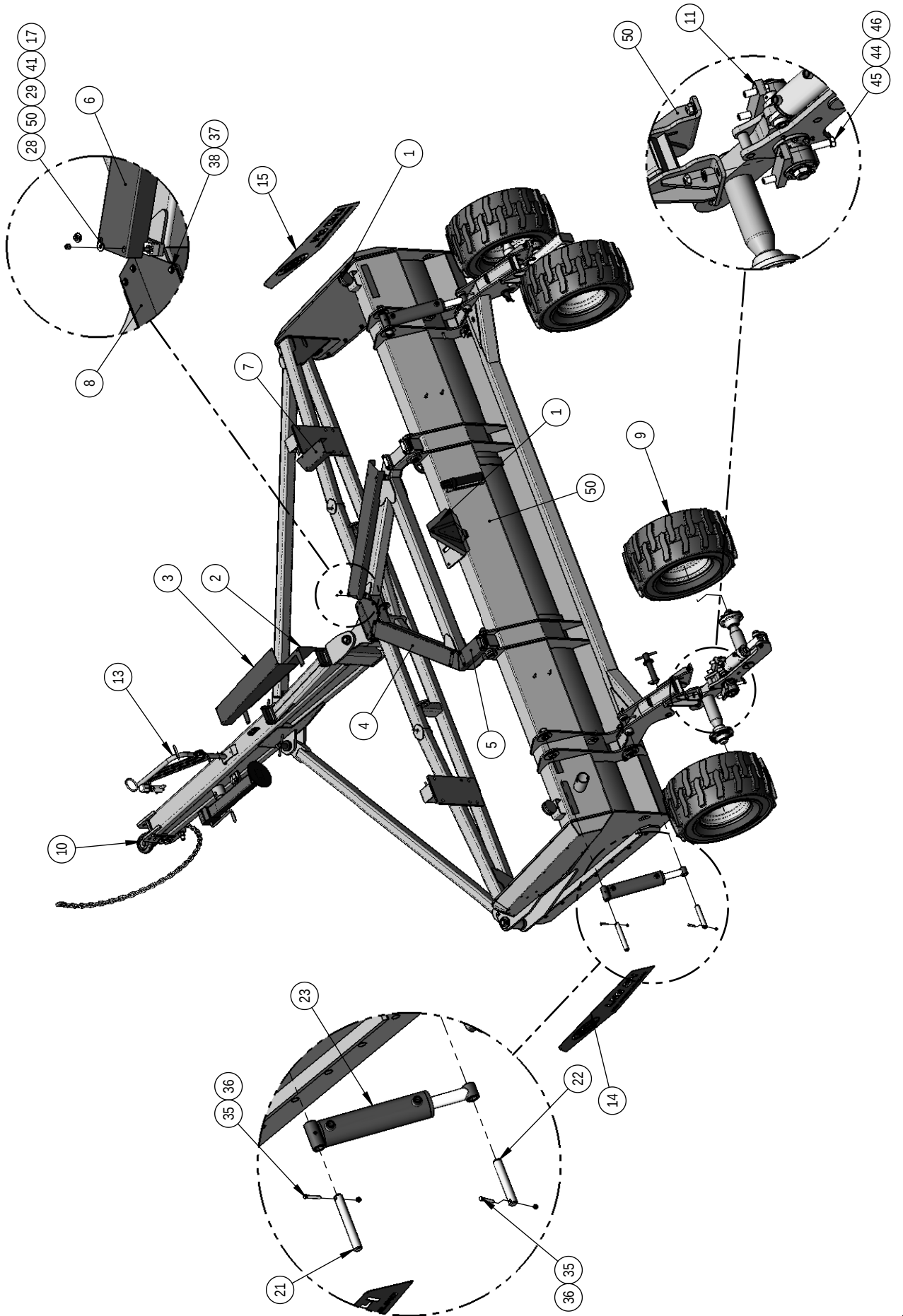
		Tire transport kit (Option)			
425/65R22.5 (Truck) (10 Bolts)	Available tire type				
Truck BKT AW705 15.0/55-17 18PRTL LABOURER+17X13X8VG BKT	Available tire type				
		Blade			
Type of Blade	TYPE DE COUPEAU	2X round blade 5/8" X 6" X 5'	2X Round Blade 5/8" X 6" X 6'	2X Round Blade 5/8" X 6" X 7'	2X Round Blade 5/8" X 6" X 8'
		Decompaction tooth (Option)			
Max penetration depth	po	4	4	4	4
Subsoiler tooth option With Trigger	number of teeth recommended				
		Land Leveler Weight			
Land Leveler Weight	lb	5400	6700	7050	7400
Weight Transport Kit	lb	no transport kit	no transport kit	no transport kit	no transport kit
Weight standard decompaction kit	lb				
Weight compaction kit with trigger	lb	N/A	N/A	N/A	N/A
		Tandem articuler			
max misalignment of the tandem	po	3.5	3.5	3.5	3.5

Tire Pressure		
Tire BKT TR 315 31 X 15.5-15	PSI	60
Tire BKT AW705 15.0/55-17 18PRTL LABOURER+17X13X8VG BKT	PSI	65
Tire BKT TR882 400/60-15.5 18PRTL SGL+15.5X13X8VG BKT	PSI	65
400/60-22.5 16PRTL SGL+22.5X11.75X8 VG	PSI	60
425/65R22.5 USAGÉ (Truck)	PSI	120
425/65R22.5 NEUF (Truck)	PSI	120
500/50/22.5 16PRTL SGL+22.5X16X8	PSI	40
425/65R22.5 (Truck)	PSI	120



© B8 · @ J9 @ F · @ BG ; (! · % \$ Z n ! · % & Z n ! · % / Z n ! · % Z n
B \$) % \$! \$ \$ \$ \$ % / Z B \$) % & ! \$ \$ \$ \$ \$ Z B \$) % / ! \$ \$ \$ \$ \$ (/ · B \$) % ! \$ \$ \$ \$ \$ &

Uæø





© B8 @ J9 @ F @ BG ; (% \$ z z % & z z % z i / % z h

Uae

B\$) % \$! \$ \$ \$ \$ % z B\$) % & ! \$ \$ \$ \$ z B\$) % ! \$ \$ \$ \$ (/ ' B\$) % ! \$ \$ \$ \$ &

ITEM	NO	DESCRIPTION	QTY - N0510-00001	QTY - N0512-00003	QTY - N0514-00004	QTY - N0516-00002
1	N-36E16	SIGNALISATION KIT	1	1	1	1
2	N-04040	GARD LNS G4	1	1	1	1
3	N-04039	GARD LNS G4	1	1	1	1
4	N-04044	ARK GUARD LNS G4	1	1	1	1
5	N-04041	ARK GUARD LNS G4	1	1	1	1
6	N-04043	ARK GUARD LNS G4	1	1	1	1
7	N-04042	ARK GUARD LNS G4	1	1	1	1
8	N-04038	GUARD LNS G4	1	1	1	1
9	N05-03E01	KIT TIRE AND WHEEL 31 X 15.5-15 NHS	1	1	1	1
10	UN-20E12	BALL HITCH CAT.3 KIT	1	1	1	1
11	N05-01E22	LNS (G4) STANDARD ARTICULATED TANDEM KIT	1	1	1	1
12	N-25090	PIN 1 1/2" X 7"	4	4	4	4
13	N-43066	SWIVEL HOSE SUPPORT	1	1	1	1
14	N-59036-P5	LNS G4 LOGO (GREY)	1	1	1	1
15	N-59035-P5	LNS G4 LOGO (GREY)	1	1	1	1
16	UN-31021-10	HOSE CLAMP (5)	4	4	4	4
17	UN-31021-11	HOSE CLAMP	8	8	8	8
18	UN-43070	JACK 8800 LBS ASS'Y	1	1	1	1
19	UN-59004	SERIAL NUMBER PROTECTOR	1	1	1	1
20	07037-4	CHAIN SAFETY 3/8" x 46" Lg - 21,000 lb	1	1	1	1
21	25AC1040904	PIN 1 1/4" (1 HOLE)	2	2	2	2
22	25AC1040708	PIN 1 1/4" (1 HOLE)	2	2	2	2
23	30014-2	HYD. CYLINDER 3 1/2" X 10" (BUSHING)	2	2	2	2
24	35048	LOCK PIN 3/8" X 2 1/2"	4	4	4	4
25	36001-2	MANUAL HOLDER 2"	1	1	1	1
26	35006-8	PIN 3/4" X 4"	1	1	1	1
27	35011-4	BENT PULL PIN 5/8" X 4"	1	1	1	1
28	46AA005	FLAT WASHER 5/16"	20	20	20	20
29	47AB00518	NYLON LOCK NUT 5/16"-18NC	20	20	20	20
30	47AA00518	HEX NUT 5/16-18NC	20	20	20	20
31	46AB100	HARDENED FLAT WASHER 1"	2	2	2	2
32	45AB100080800	HEX BOLT 1"-8NC X 8" GR8	1	1	1	1

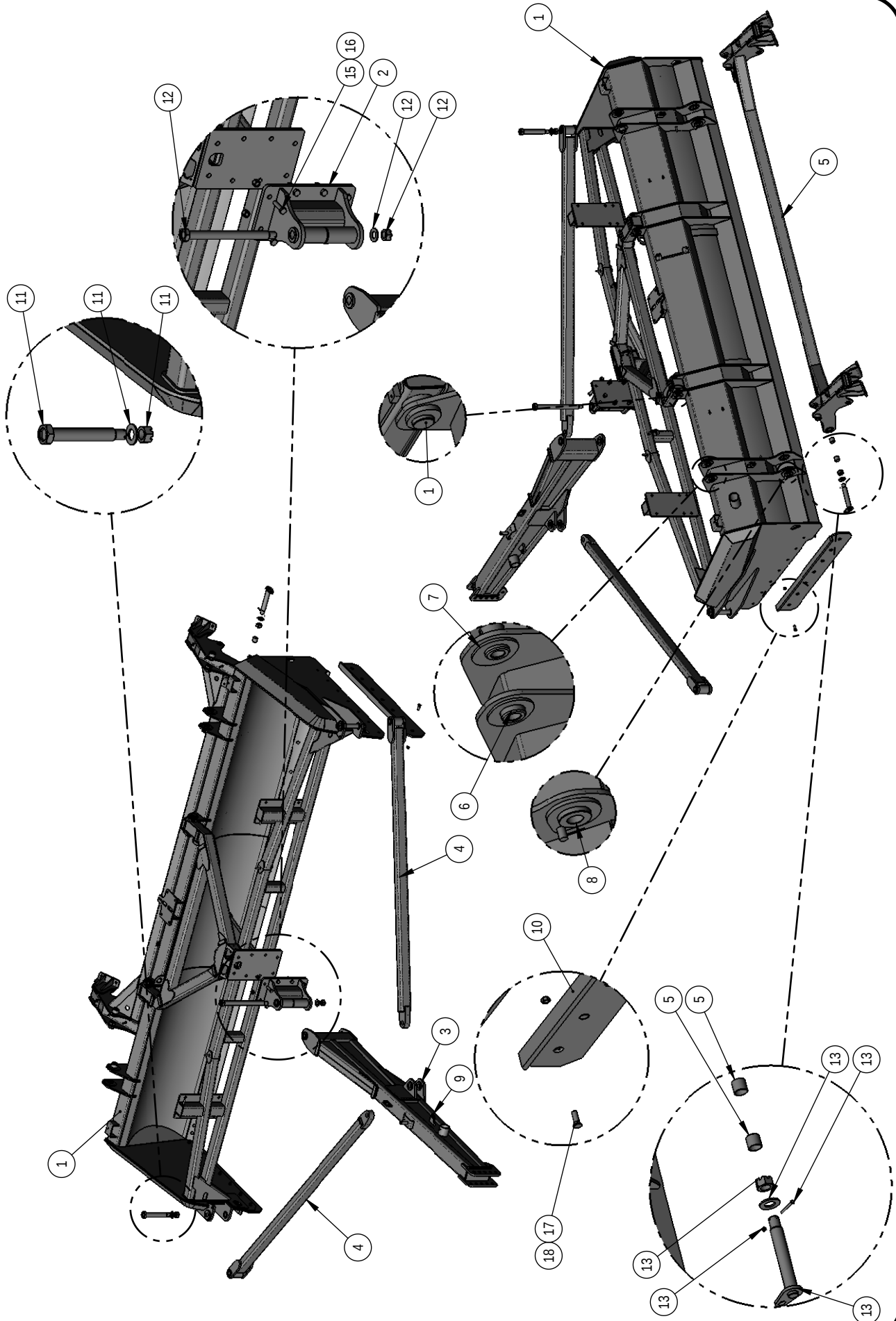


ITEM	NO	DESCRIPTION	QTY - N0510-00001	QTY - N0512-00003	QTY - N0514-00004	QTY - N0516-00002
33	47AB10008	NYLON LOCK NUT 1"-8NC	1	1	1	1
34	48AA040406	RIVET 1/4" X 1/4" - 3/8" SS	26	26	26	26
35	45AA006160300	HEX BOLT 3/8-16NC X 3" GR5	4	4	4	4
36	47AB00616	NYLON LOCK NUT 3/8"-16NC	5	5	5	5
37	46AA004	FLAT WASHER 1/4"	8	8	8	8
38	45AA004200100	HEX BOLT 1/4-20NC x 1" GR5	8	8	8	8
39	47AB00420	NYLON LOCK NUT 1/4-20 NC	4	4	4	4
40	45HA005180308	FULLY THREADED STUDS 5/16-18 X 3 1/2"	4	4	4	4
41	45HA005180204	FULLY THREADED STUDS 5/16-18 X 2 1/4"	16	16	16	16
42	45AA006160200	HEX BOLT 3/8-16NC x 2" GR5	1	1	1	1
43	31089-1	1/2 HIGH PRESSURE BALL VALVES SAE 8 CONNECT	1	1	1	1
44	46AB012	HARDENED FLAT WASHER 3/4"	8	8	8	8
45	45AA012100208	HEX BOLT 3/4-10NC X 2 1/2" GR5	8	8	8	8
46	47AC01210	STOVER LOCK NUT 3/4-10NC	8	8	8	8
47	59003	SERIAL NO. IDENTIFICATION	1	1	1	1
48	48AA030810	RIVET 3/16" X 1/2" - 5/8" SS	2	2	2	2
49	N0510-29E01	HYDRAULIC HOSES KIT LNS-10 (G4) (SWING ARM AND TILT)	1			
	N0512-29E02	HYDRAULIC HOSES KIT LNS-12 (G4) (SWING ARM AND TILT)		1		
	N0514-29E03	HYDRAULIC HOSES KIT LNS-14 (G4) (SWING ARM AND TILT)			1	
	N0516-29E02	HYDRAULIC HOSES KIT LNS-16 (G4) (SWING ARM AND TILT)				1
50	N0510-05E01	LNS G4 LAND LEVELER FRAME KIT 10ft	1			
	N0512-05E03	LNS G4 LAND LEVELER FRAME KIT 10ft		1		
	N0514-05E04	LNS G4 LAND LEVELER FRAME KIT 10ft			1	
	N0516-05E02	LNS G4 LAND LEVELER FRAME KIT 10ft				1



© B8 · @ J9 @ F : F 5 A 9 ? # H' @ B G ; (2 \$ Z Z % & Z Z % / Z V ' % % Z n
B \$) % \$! \$) 9 \$ % Z B \$) % & ! \$) 9 \$ ' Z B \$) % / ! \$) 9 \$ (/ ' B \$) % ! \$) 9 \$ &

Uã&A•



BCA9B7 @HI F9'C: `@B8`@J9@F: F5A9`@BG; (ž% dj!'B\$) %!\$) 9\$(&

QØT	PU	Ö^•&ā ā }	Û~ æ æ
F	þēí HÍ	ØÜCE ÒÀŠPÙÁØI ÁFI C	F
G	þēí H H	ÛY QÒŠÁÖÜCEY ÓCEJÁŠPÁØI	F
H	þēí H G	T QPÁÖÜCEY ÓCEJÁŠPÙÁØI	F
I	þēí H €	ÜÖQØUÜÖØT ÒP VÁÖCEJÁŠPÙÁØI	G
Í	þēí FGI	ÛY QÖÁÖÛT ÁŠPÙÁØI ÁFI -c	F
Ī	þēí HĪ	ØÜCE ÒÀŠPÙÁØI ÁÜWÁÖEÜD	G
İ	þēí Hİ	ØÜCE ÒÀŠPÙÁØI ÁÜWÁÖEÜD	G
Ì	þēí HU	ØÜCE ÒÀŠPÙÁØI ÁÜWÁÖEÜD	I
J	đ œfèl €j€€	PÒYÁRÒÖÖÁÜQÁFÁFÉÁY QPÁRUSÒ	G
F€	đ œfèl fí €€	PÒYÁRÒÖÖÁÜQÁFÁFÉÁY QPÁRUSÒ	F
FF	þēí FJF	ŠPÙÁØI ÁÜÖÖÁÖŠÖÖÖÁÖ ð ÁYÁ ÁYÁ Í ÁD	G
FG	l í œfèl fg€€€€	PÒYÁÖUŠVÁÐ ÈÉÁYÁGFÉÁÖÜI	ì
FH	l ĩ œfèl fg€	þŸŠUPÁŠUÔŠÁPWÁÐ ÈÉPÔ	ì
FI	l í œfèl fff€€€€	ÜÖÜCEJÖÜÁÖUŠVÁÖUT ÒÁRÖÖÖÁ ð ÁFFPÖÁYÁÖÜI	HG
FÍ	l ĩ œfèl fff	UVUXÖÜÁŠUÔŠÁPWÁÐ ÈFFPÔ	HG
FĪ	GF€FGĪ	ÜUWPÖÁÖWVQÖÁÖÖÖÖÁ ð ÁYÁ ÁYÁ ÖÇ ð ÁD	G
Fİ	þēí Ğ JĪFI	T QPÁÖÜCEY ÓCEJÁÖCEÜVD	F
FÌ	đ œfèl èl èl	ÚQÁRÖÖÖÁÖ VÖÜUVÖE/QPÁFÁFÉÁY/PÜÖÖÖÖÖÁÖPÖŠÖÁ È	G

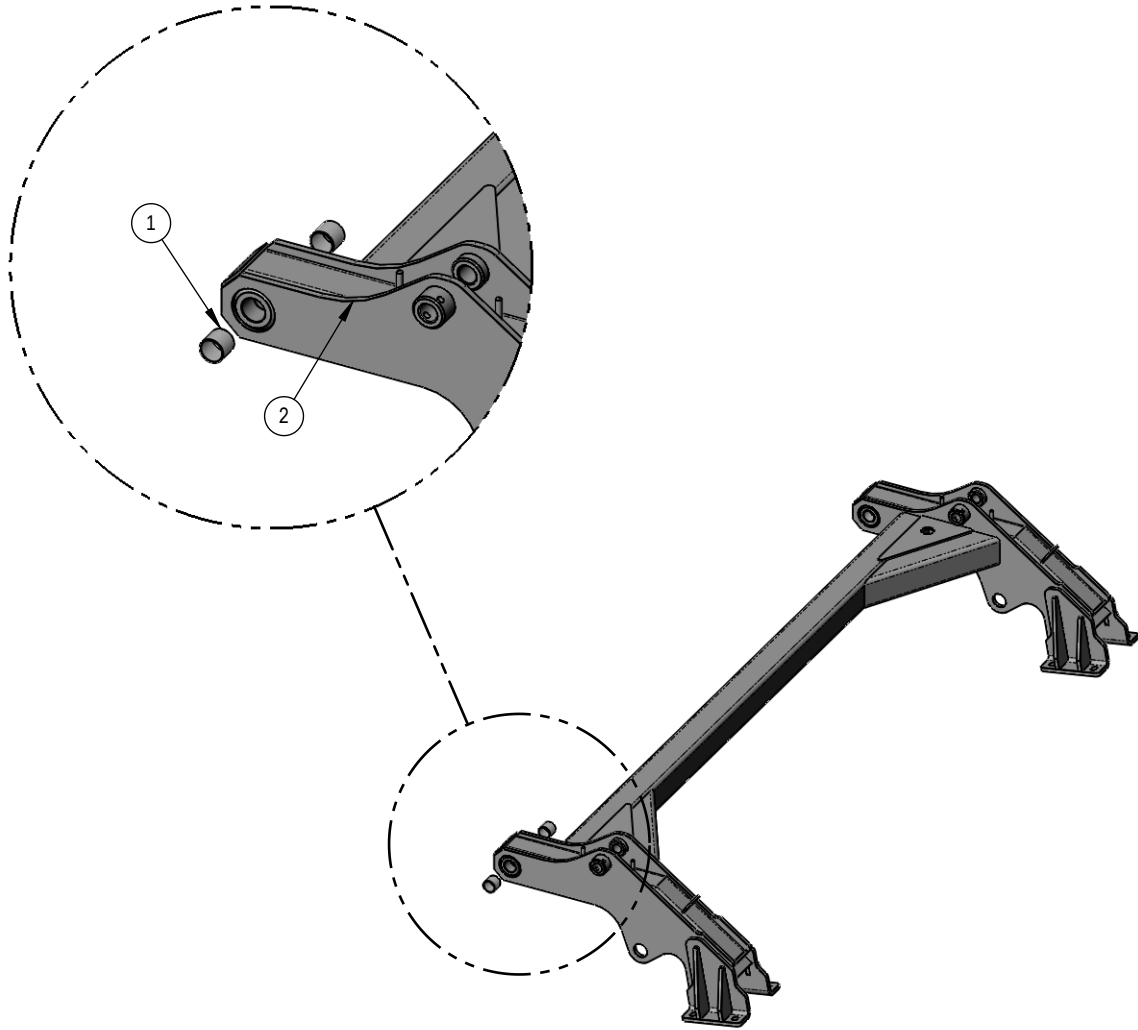
BCA9B7 @HI F9'C: `@B8`@J9@F: F5A9`@BG; (ž% dj!'B\$) %!\$) 9\$&

QØT	PU	Ö^•&ā ā }	ÛVŸÁ
F	þēí HÍ F	ØÜCE ÒÀŠPÙÁØI ÁFI C	F
G	þēí H H	ÛY QÒŠÁÖÜCEY ÓCEJÁŠPÁØI	F
H	þēí H G	T QPÁÖÜCEY ÓCEJÁŠPÙÁØI	F
I	þēí H H	ÜÖQØUÜÖØT ÒP VÁÖCEJÁŠPÙÁØI	G
Í	þēí FGI	ÛY QÖÁÖÛT ÁŠPÙÁØI ÁFI -c	F
Ī	þēí HĪ	ØÜCE ÒÀŠPÙÁØI ÁÜWÁÖEÜD	G
İ	þēí Hİ	ØÜCE ÒÀŠPÙÁØI ÁÜWÁÖEÜD	G
Ì	þēí HU	ØÜCE ÒÀŠPÙÁØI ÁÜWÁÖEÜD	I
J	þēí Ğ JĪFI	T QPÁÖÜCEY ÓCEJÁÖCEÜVD	F
F€	þēí FJF	ŠPÙÁØI ÁÜÖÖÁÖŠÖÖÖÁÖ ð ÁYÁ ÁYÁ Í ÁD	G
FF	đ œfèl €j€€	PÒYÁRÒÖÖÁÜQÁFÁFÉÁY QPÁRUSÒ	G
FG	đ œfèl fí €€	PÒYÁRÒÖÖÁÜQÁFÁFÉÁY QPÁRUSÒ	F
FH	đ œfèl èl èl	ÚQÁRÖÖÖÁÖ VÖÜUVÖE/QPÁFÁFÉÁY/PÜÖÖÖÖÖÁÖPÖŠÖÁ È	G
FI	GF€FGĪ	ÜUWPÖÁÖWVQÖÁÖÖÖÖÁ ð ÁYÁ ÁYÁ ÖÇ ð ÁD	G
FÍ	l í œfèl fg€€€€	PÒYÁÖUŠVÁÐ ÈÉÁYÁGFÉÁÖÜI	ì
FĪ	l ĩ œfèl fg€	þŸŠUPÁŠUÔŠÁPWÁÐ ÈÉPÔ	ì
Fİ	l í œfèl fff€€€€	ÜÖÜCEJÖÜÁÖUŠVÁÖUT ÒÁRÖÖÖÁ ð ÁFFPÖÁYÁÖÜI	H
FÌ	l ĩ œfèl fff	UVUXÖÜÁŠUÔŠÁPWÁÐ ÈFFPÔ	H



GK-B; '5FA'@BG; (%\$Zž%&Zž%ž / '% Zh
B!\$)' * (žB!\$%&' %žB!\$%&% / 'B!\$%&%

Úæø



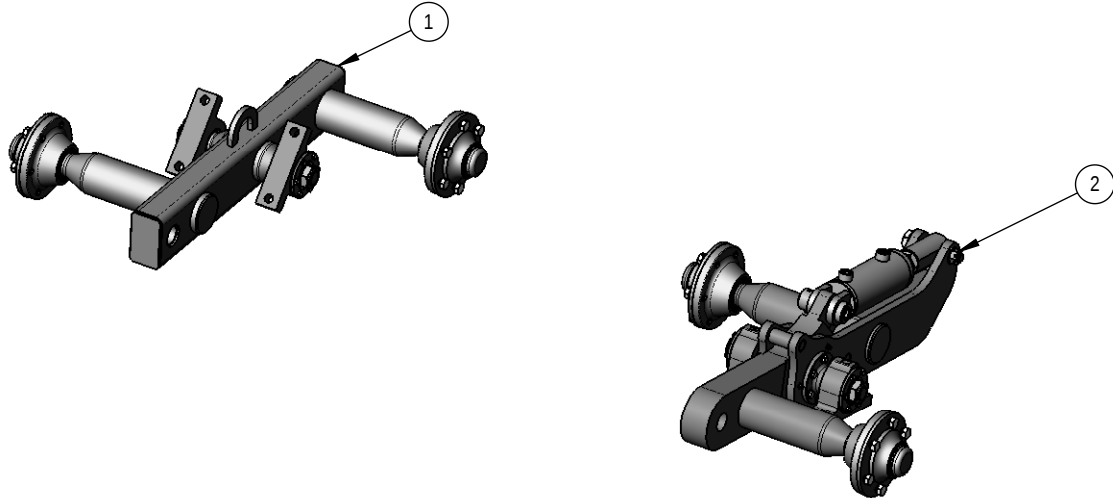
QÒT	PU	Ö•&ā ā }	Ùç /ZMA PÈI HI	Ùç /ZMA PÈFGF	Ùç /ZMA PÈFGI	Ùç /ZMA PÈFGI
F	HI OEEI G	ÚSÖP /ÖÖEJ Q ÖÁÖHEÇÁ FÉCÖY Á FÉCÖ SÖ	I	I	I	I
G	PÈI HI I ÈF	ÙY Q ÖÁÖÛT ŠPÙÁÖI ÁÉç	F			
	PÈFGF ÈF	ÙY Q ÖÁÖÛT ŠPÙÁÖI ÁFGÁ		F		
	PÈFGI ÈF	ÙY Q ÖÁÖÛT ŠPÙÁÖI ÁFI ç			F	
	PÈFGI ÈF	ÙY Q ÖÁÖÛT ŠPÙÁÖI ÁFÎ ç				F



SHOULE (LGH5 B85 F8 '5 FH7I @ H98 'H5 B89A ' ? #H B\$) ! \$ % & &

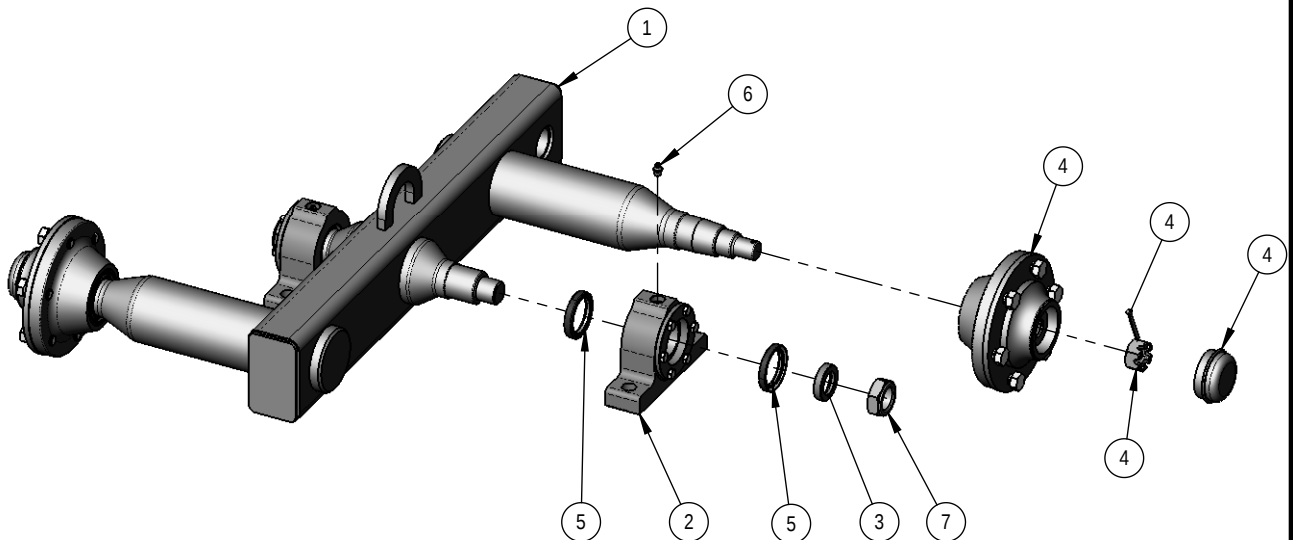
Úæø

QØT	PU	Ö^•&ā ç }	Û~ æ œ
F	ÞÉÍ ÈÈFÒÈ	VØÞ ØØT ÁØÝ ØØÁÛØÞ VÁŠÞ ÛÁÕI	F
G	ÞÉÍ ÈÈFÒÈ	ŠØØVÁØÛVØWŠØÈVØØÁVØÞ ØØT ÁŠÞ ÛÁÕI	F



B\$) ! \$ % & \$ ' ! H5 B89A ' : ± 98 ' F = < H ' @ B G ; (

QØT	PU	ÖØÙØÛØVØWÞ	Û~ æ œ
F	ÞÈÈFGÍ	ÛØÞ VÁØÝ ØØÁVØÞ ØØT ÁŠÞ ÛÁÕI	F
G	ÞÉÍ ÈH T ÈF	ÚŠØØÞ ÁØØÈÛØ ØÁÈÁÈ ÁØÈÛØÝ ÁŠÞ ÛD	G
H	ÞÈÈ ÈÈÈÈG	ØÙXØÙÁÈÁÈ ÁÁÚŠØØÞ ÁØØÈÛØ Ø	G
I	ÈÈÈÈG	ÍÈÈÈŠØÙÁWÓ	G
Í	HÍ ÈÈÈÈG	UŠÁÙØØŠÁÁÍ ÈÍ ÁÝ ÁGÁÈÈÁÝ ÁÈ Á	I
Î	HÍ ÈFG	ÙVÛØØÞ VÁØÛØØÈØÁØVØ ØÁÈÞ ÁÞ ÛV	G
Ï	ÍÏ ØØFÈ È	VØØÞ ÁÝŠÞ ÁŠÙØŠÁWÁÈÈ È ÞØ	G

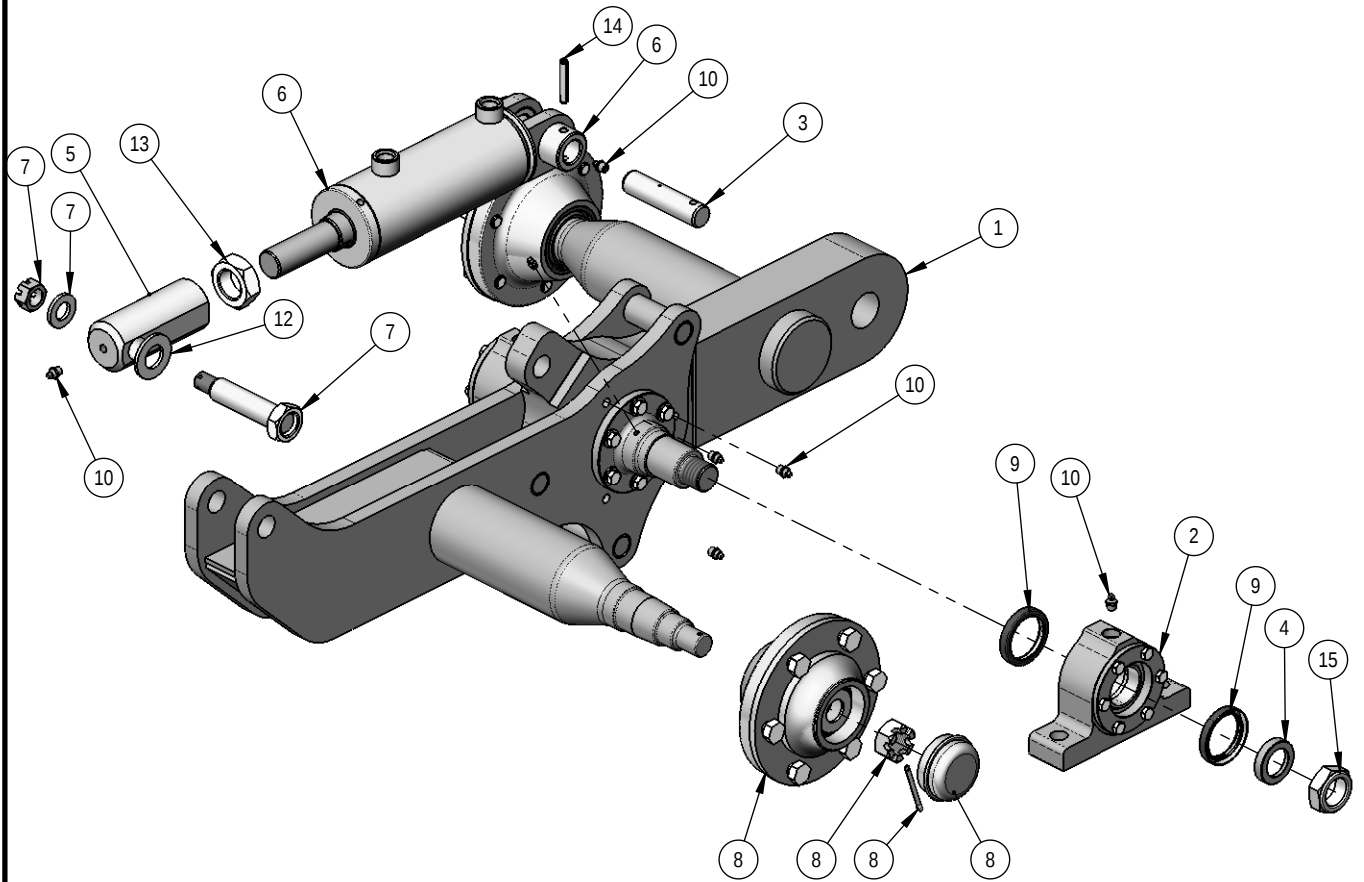




©: H'5 FH7I @ H98 'H5 B89A ' @BG'; (B\$) !\$%&%

Úæø

QÒT	PU	ÖÒÙÒÛΩVΩP	Û' æ œ.
F	Πεί έFT έ	νœΠòòT ΑέVΩS' ΑΩMΠòSΠUΑOι ΑT UPVEGD	F
G	Πεί έH T έF	òPÙÈUWÚUUÜVÄUUVMSÒFÁDÄSΠUD	G
H	ΠέG έ έG	òPòXSSòÀòOÏSòPòUòÁ FòÄòUòUòWÁ έέέSòD	F
I	ΠέG έFFέG	òUWXòUòSòÀòOÀUòNòPòWòÄUUVMSòFÁDÄ	G
Í	WΠέFέέ έG	αòέVòNòWÁFÁUUVWUÁÏSòPòUòOòCòUòW	F
Î	WΠέHέ G	X" ÜPÄUVœPòCèUòÁHÁYÁÄ	F
Ï	Gí αóFέέέFG	œYòÁ; VòPòYÁFÄCèOòÁUÜW	F
Ì	έFέG	T UYòWÁ έέέSò	G
J	H έFέέFG	RUQVÄCVPœP" Q" FÁFÍ FÍ ÄYÁGÁFÄYÁDÄ	I
F€	Hí έFG	òUòUòUòMÜòUUVÁFòÄPÜV	J
FF	Hí έFGέ	òUòUòUòMÜòUUVÁFòέG ÁPò	G
FG	Ií αóFέέ	ÜUPòòSSòÁUSœVòÁUòT Ú" òFÁ	F
FH	Ií αóFέ έ	òèòUUVWÁPòCèYέFÁFòέPò	F
FI	I JαóFέ έέέ	òUWÚSSòÀUòUòUÜVÁ FÍ ÄYÁGÁ	F
FÍ	Ií αóFέ έ	òòUUVWÁPÏSòPÁ PòOòFÁFòέPò	G



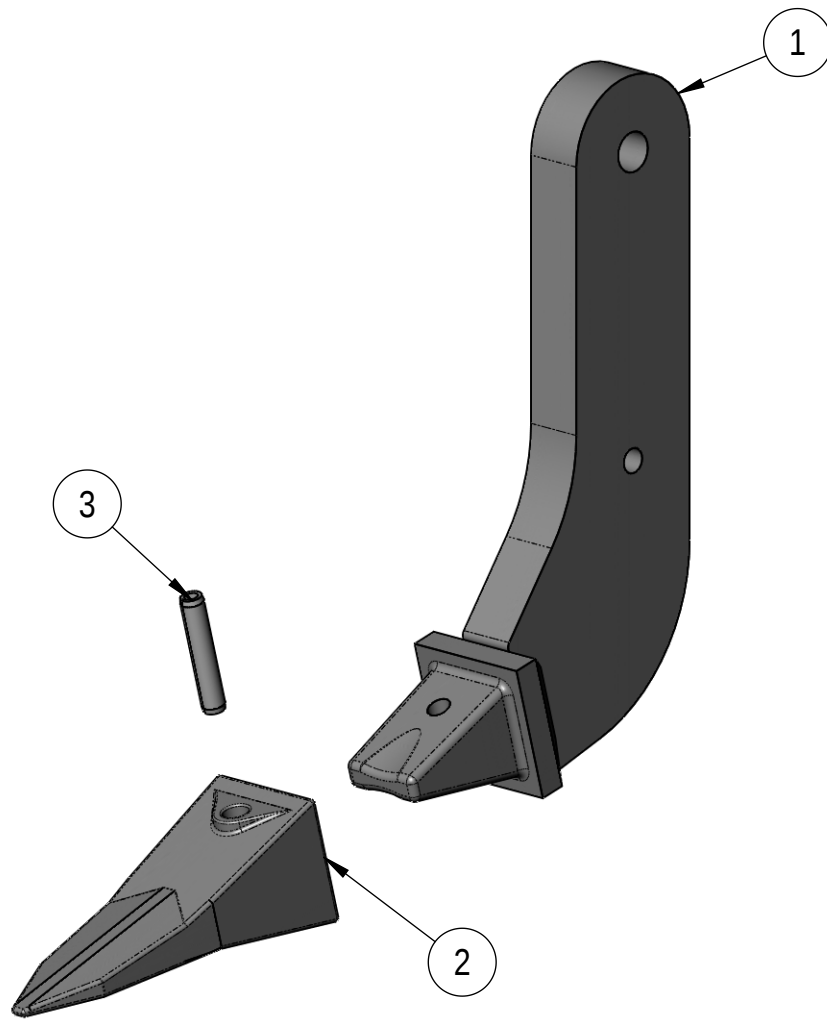


G75F = 9F'H; 9F'H99H< '5 GG'f@BGL

B!&0\$(

Úæø

QÒT	PU	ÖÒÛÔÜŴVŴP	Û~ æ ã
F	PEFJÍ	ÖÒÛT ÚÛÔŴPÁUUVP	F
G	GFJ	ÓMÔSÒÁUUVPÁŴFÍ ÁŴÖÛD	F
H	I JŴEÍ EEE	ÛÛÛŴ ÖÁŴPÁŴÁŴ	F



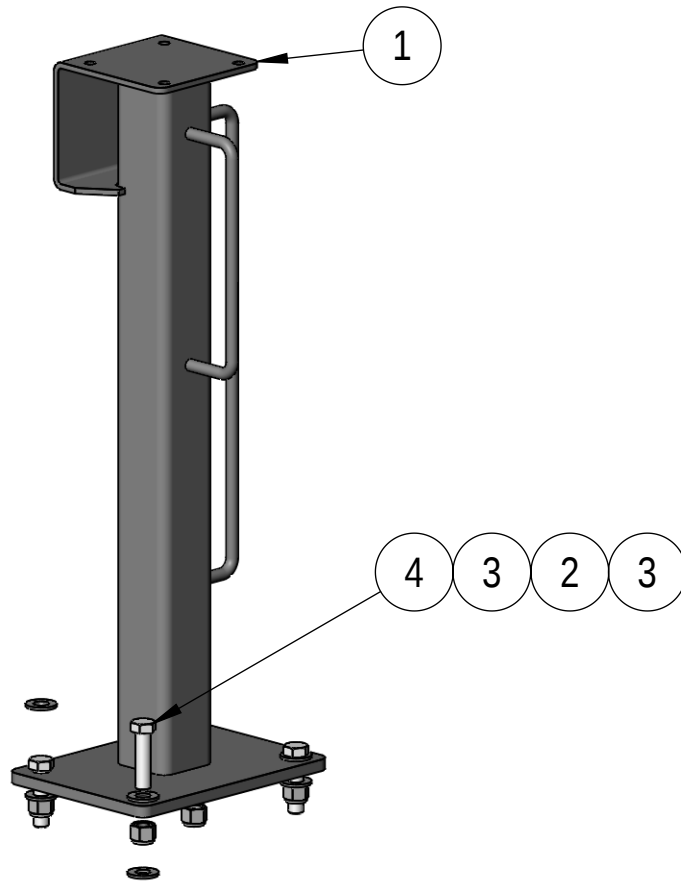


; DG'DCGH'?#I

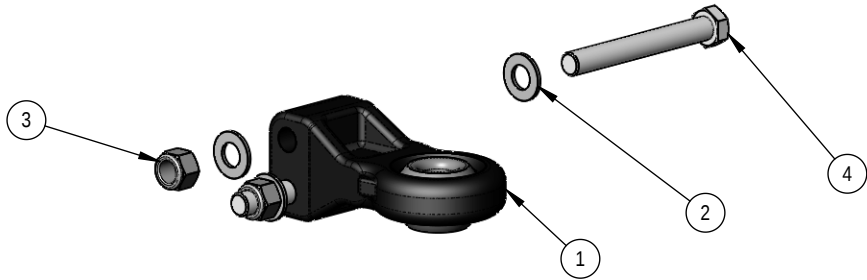
B!' * 9%

Úæø

QÒT	ÐU	ÖÒÛÔÛŴVŴÐ	Ûˆ æ œ
F	ÐĚÍ Ĝ H	ŎÛÛÁÛÛÛ	F
G	Í Î Ó Ę Ę Ę	ÐŸŠÛÐŠÛÔŠÁŴŴÁ ð Ą Ę Ę Ę Ô	l
H	Í Î Ó Ę Ę	ÐĄÛŎŎÐŎŎÁŠŎĄŴ Ą Ą Ę Ę Ą ð	ì
I	Í Î Ó Ę Ę Ę Ę Ę Ę Ę Ę	ÐŎŸÁŎŠŴÁ ð Ę Ę Ę Ę ŎŸÁĜĘŴŎÛÍ	l

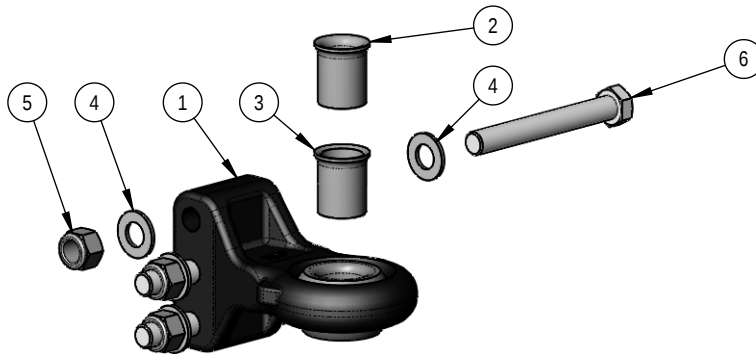


I B!&\$9%&



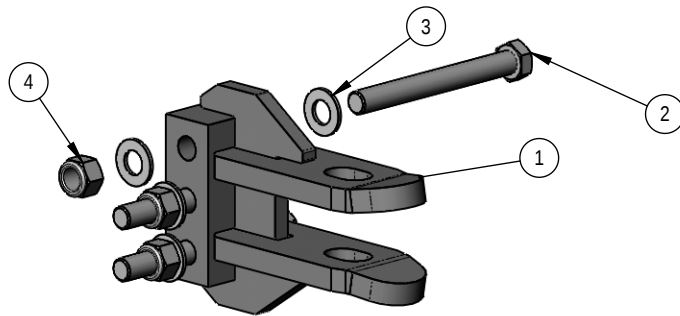
QVOT	PU	ÓÓUÓUQVQV P	Ú~ æ cæ
F	GEEFH	ÓÓSSP QVOP ÁÓEVA ÁOP HÚÓÓE	F
G	IÍ ÓÓFEE	PÓEJÓOP ÓÓÁÓÓEVA ÓEJPOUÁÄ	I
H	IÍ ÓÓFEEÈ	PÝSU PÁSU ÓSÁ VWÁÆÈ PÓ	G
I	IÍ ÓÓFEEÈ è €€	PÓYÁOU SVÁÆÈ PÓYÁÁ ÁÓUÌ	G

I B!&\$9\$)



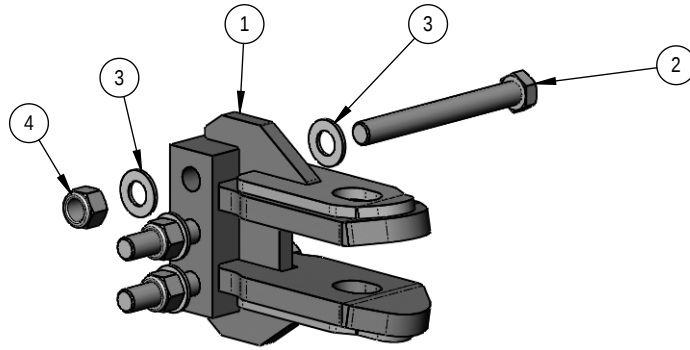
QVOT	PU	ÓÓUÓUQVQV P	Ú~ æ cæ
F	GEEFH	ÓÓSSP QVOP ÁÓEVA ÁOP I ÚÓÓE	F
G	GEEFI	ÓÓSSP QVOP ÁÓEVA ÁJÓÓWÓP ÓÁWUP ÓÁFÁEÄ	F
H	GEEFI ÈH	ÓÓSSP QVOP ÁÓEVA ÁJÓÓWÓP ÓÁWUP ÓÁFÁEÄ	F
I	IÍ ÓÓFEE	PÓEJÓOP ÓÓÁÓÓEVA ÓEJPOUÁÄ	I
Í	IÍ ÓÓFEEÈ	PÝSU PÁSU ÓSÁ VWÁÆÈ PÓ	H
Ï	IÍ ÓÓFEEÈ è €€	PÓYÁOU SVÁÆÈ PÓYÁÁ ÁÓUÌ	H

I B!&\$9\$+



QVOT	PU	ÓÓUÓUQVQV P	Ú~ æ cæ
F	WP ÈGEEHJ	ØÓT ÓSÓP QVOP ÁFÁEÞ ÓY ÓSÓD	F
G	IÍ ÓÓFEEÈ èJ€€	PÓYÁOU SVÁÆÈ PÓYÁÁ ÁÓUÌ	H
H	IÍ ÓÓFEE	PÓEJÓOP ÓÓÁÓÓEVA ÓEJPOUÁÄ	I
I	IÍ ÓÓFEEÈ	PÝSU PÁSU ÓSÁ VWÁÆÈ PÓ	H

I B!&\$9%\$



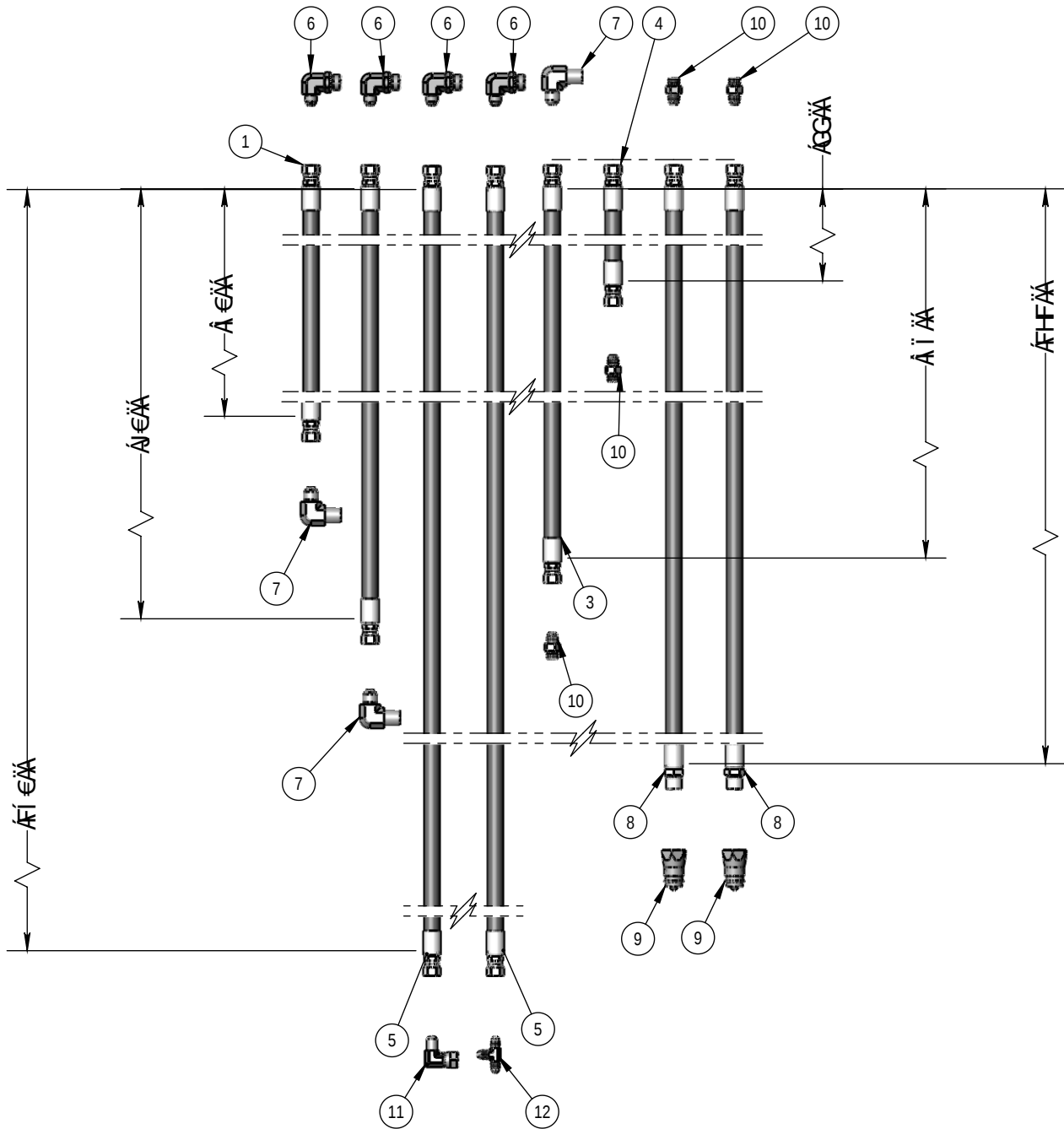
QØT	ÞU	ÖÙÒÛØVØÞ	Û~ æ œ
F	WÞË€€ Ì	ØØT ØŠÒP QØP Á Á ØØY ØŠÖD	F
G	I Í ØÓF€€€ €J€€	PØY ÁÓU ŠVÁÆ Æ ÞÓÁ Á ÅÖÙÌ	H
H	I Î ØÓF€€	PØËÖØÞ ÖÖÁ ØŠØVÁ ØËP ØÛÁÆÄ	Î
I	I Ï ØÓF€€€	ÞÿŠU ÞŠU ÔSÁ ÞWÁÆ Æ ÞÔ	H



<MB " <CG9G? #H @BG!% 'fi (L'fG7 5 F= 9F '? #HL
 B\$) !&- 9\$'

Úæø

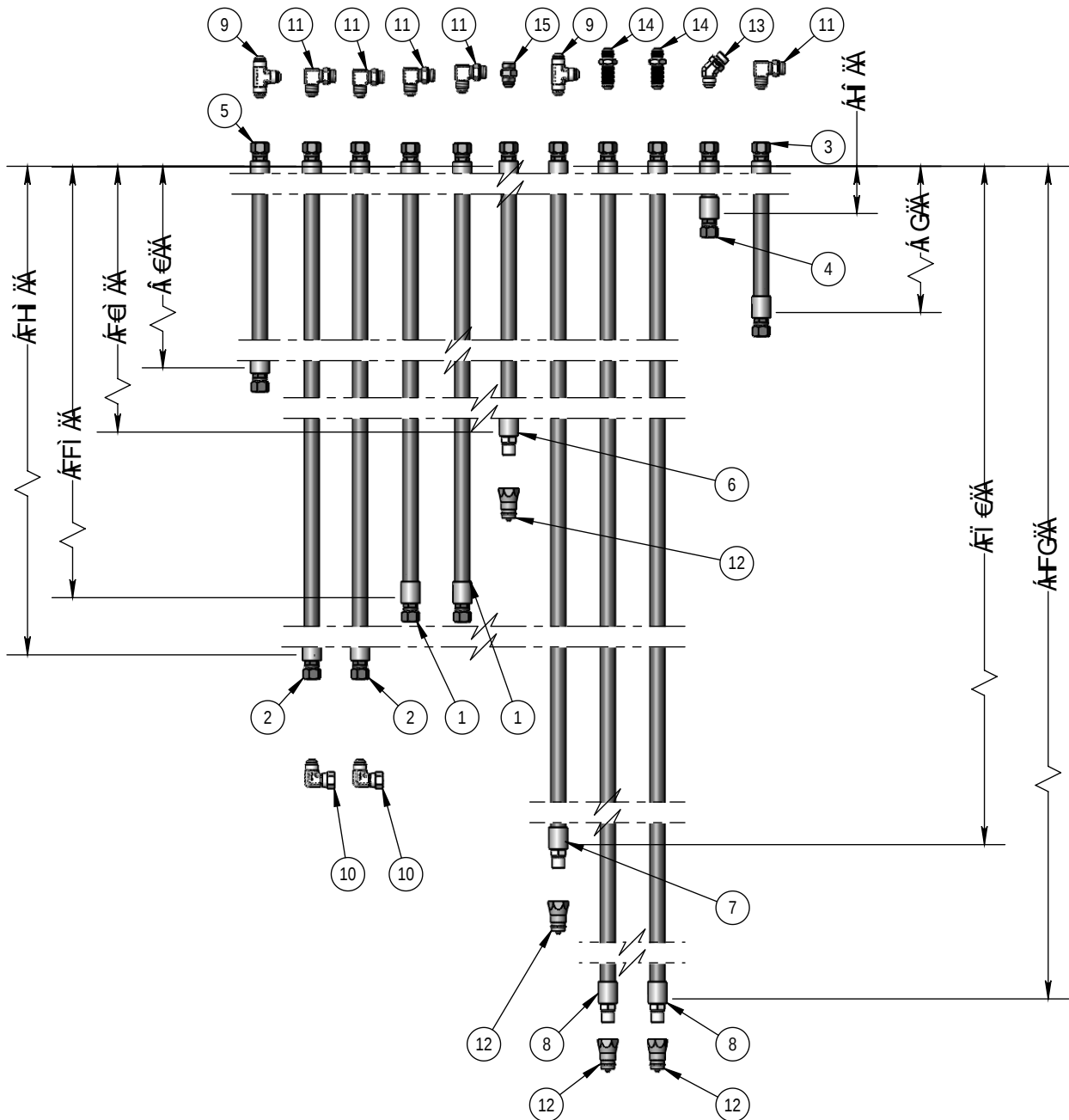
QVOT	PU	Ó^• qã }	Ú~ ăã
F	WpEGJEEFEI €	PYÖEP UUOÄ # ASUA # ARÖCZYÄ # ARÖCZYÄ €	F
G	WpEGJEEFEJE €	PYÖEP UUOÄ # ASUA # ARÖCZYÄ # ARÖCZYÄ JE	F
H	WpEGJEEFEI I	PYÖEP UUOÄ # ASUA # ARÖCZYÄ # ARÖCZYÄ I	F
I	WpEGJEEFEIGG	PYÖEP UUOÄ # ASUA # ARÖCZYÄ # ARÖCZYÄ GG	F
I	WpEGJEEFEI €	PYÖEP UUOÄ # ASUA # ARÖCZYÄ # ARÖCZYÄ I €	G
I	HFEFHG	JE»PYOÄZVQ OÄFEAUUOQT DA # ARÖC D	I
I	HFEFHE €	ZVQ OÄ # AUUVQ DA # ARÖC D €	H
I	WpEGJEGEHF	PYÖEP UUOÄ # ASUA # ARÖCZYÄ FEAUUOQT DA/HF	G
J	HFEFI EG	ÜWÖSAUWUSOUÄ OSAFEAUUOQZUJI FEI UD	G
FE	HFEFI E	OÖEJA # ARÖC DA # AUUOQT DUVUD	I
FF	HFEFHEF	OÖEJA # ARÖC DA # ARÖC D €	F
FG	HFEEGFE €	OÖEJA # ARÖC DA # ARÖC DA # ARÖC D €	F





**<MB F5I @7 <CG9G?#H @BG!\$fi (L'fGK B; '5 FA '5 B8 'H@HL
B\$) %\$!&- 9\$%** Úæø

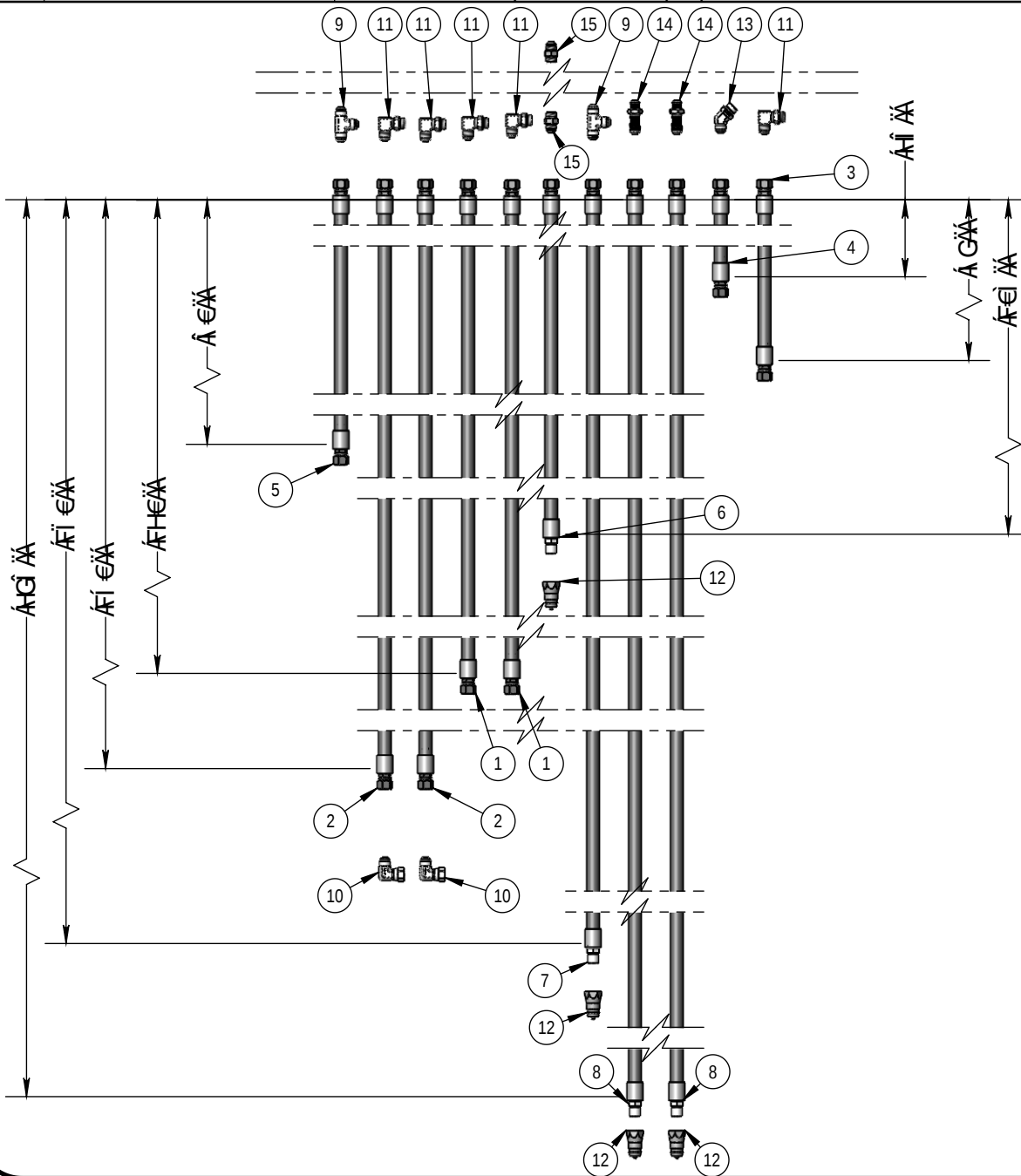
QVOT	PU	Ó•&å å }	Ú æ æ
F	WPEGEEJFI	PYÖÄPUUOÄFBÄSUÄFBÄRÖÖDÄFBÄRÖÖDÄYFFI	G
G	WPEGEEJFH	PYÖÄPUUOÄFBÄSUÄFBÄRÖÖDÄFBÄRÖÖDÄYFH	G
H	WPEGEEJEG	PYÖÄPUUOÄFBÄSUÄFBÄRÖÖDÄFBÄRÖÖDÄYEG	F
I	WPEGEEJEH	PYÖÄPUUOÄFBÄSUÄFBÄRÖÖDÄFBÄRÖÖDÄYEH	F
Í	WPEGEEJEI	PYÖÄPUUOÄFBÄSUÄFBÄRÖÖDÄFBÄRÖÖDÄYEI	F
Ï	WPEGEEJFI	PYÖÄPUUOÄFBÄSUÄFBÄRÖÖDÄFBÄRÖÖDÄYFI	F
Ì	WPEGEEJFI	PYÖÄPUUOÄFBÄSUÄFBÄRÖÖDÄFBÄRÖÖDÄYFI	F
Î	WPEGEEJFI	PYÖÄPUUOÄFBÄSUÄFBÄRÖÖDÄFBÄRÖÖDÄYFI	F
J	HFECEFI	OÖÖUÄFBÄRÖÖDÄFBÄRÖÖDÄFBÄRÖÖDÄYOOD	G
FE	HFEHFEH	OÖÖUÄFBÄRÖÖDÄFBÄRÖÖDÄYED	G
FF	HFEHFI	OÖÖUÄFBÄRÖÖDÄFBÄRÖÖDÄYED	I
FG	HFEHFI	OÖÖUÄFBÄRÖÖDÄFBÄRÖÖDÄYED	I
FH	HFEHFI	OÖÖUÄFBÄRÖÖDÄFBÄRÖÖDÄYED	I
FI	HFEHFI	OÖÖUÄFBÄRÖÖDÄFBÄRÖÖDÄYED	I
FÍ	HFEHFI	OÖÖUÄFBÄRÖÖDÄFBÄRÖÖDÄYED	I





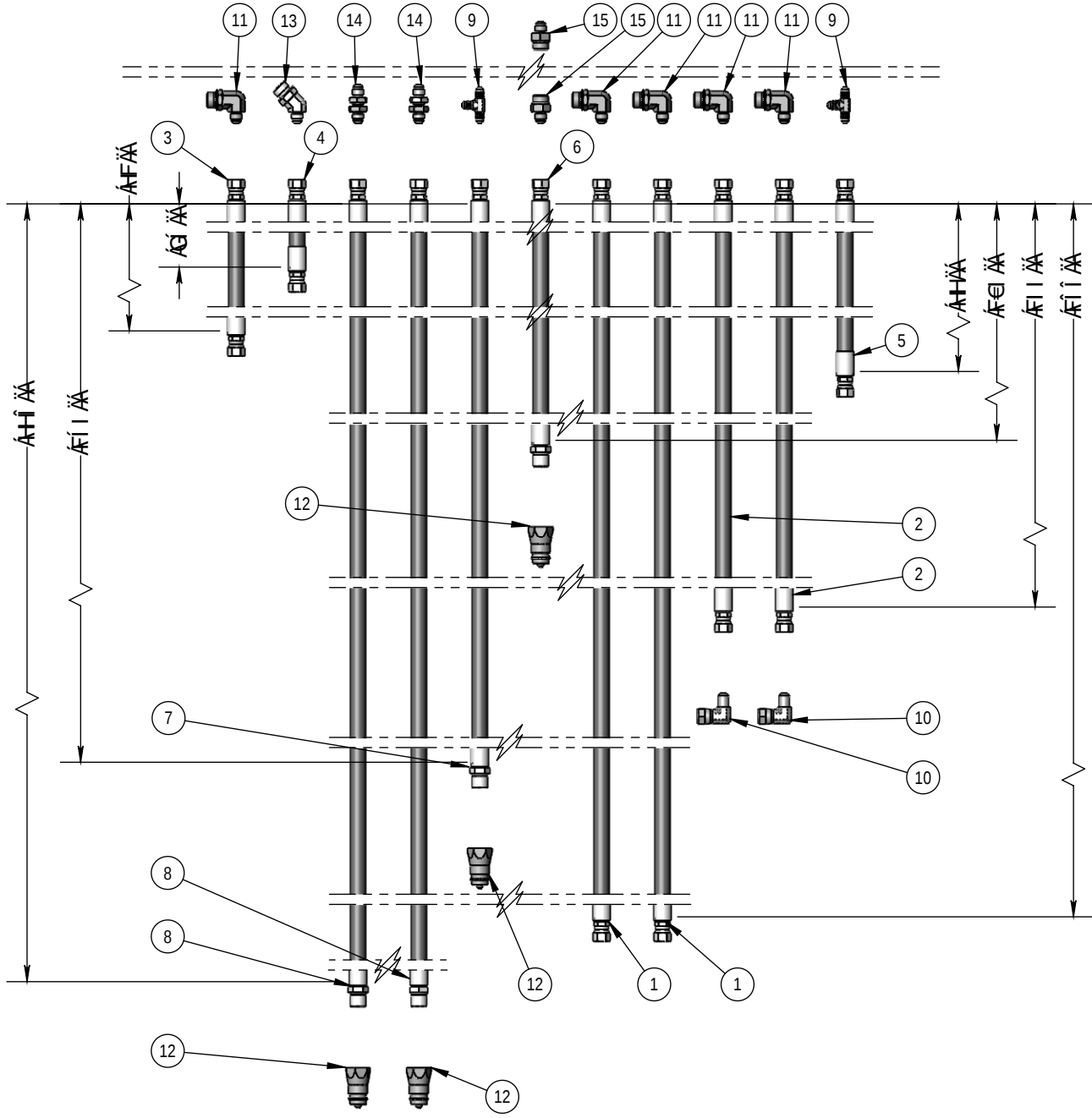
<MB F5I @7 <CG9G?#H @BG!%&fi (L'fGK -B; '5 FA '5 B8 'H@HL
 B\$) %&!&- 9\$& Úæø

QVOT	PU	Ó^•&á ä }	U' æ æ
F	WpEGEJEHE	PYÖÄPUUOÄFBÄSUFBÄRÖÖDÄFBÄRÖÖDÄYFHE	G
G	WpEGEJEFI €	PYÖÄPUUOÄFBÄSUFBÄRÖÖDÄFBÄRÖÖDÄYFI €	G
H	WpEGEJEG	PYÖÄPUUOÄFBÄSUFBÄRÖÖDÄFBÄRÖÖDÄYG	F
I	WpEGEJEHI	PYÖÄPUUOÄFBÄSUFBÄRÖÖDÄFBÄRÖÖDÄYHI	F
Í	WpEGEJEI €	PYÖÄPUUOÄFBÄSUFBÄRÖÖDÄFBÄRÖÖDÄYI €	F
Ï	WpEGEJEI €	PYÖÄPUUOÄFBÄSUFBÄRÖÖDÄFBÄRÖÖDÄYI €	F
Ì	WpEGEJEI €	PYÖÄPUUOÄFBÄSUFBÄRÖÖDÄFBÄRÖÖDÄYI €	F
Î	WpEGEJEI €	PYÖÄPUUOÄFBÄSUFBÄRÖÖDÄFBÄRÖÖDÄYI €	F
Ï	WpEGEJEI €	PYÖÄPUUOÄFBÄSUFBÄRÖÖDÄFBÄRÖÖDÄYI €	F
Ì	WpEGEJEI €	PYÖÄPUUOÄFBÄSUFBÄRÖÖDÄFBÄRÖÖDÄYI €	F
Î	WpEGEJEI €	PYÖÄPUUOÄFBÄSUFBÄRÖÖDÄFBÄRÖÖDÄYI €	F
Ï	WpEGEJEI €	PYÖÄPUUOÄFBÄSUFBÄRÖÖDÄFBÄRÖÖDÄYI €	F
J	HFECEFI	ÖÖUEJÄFBÄRÖÖDÄFBÄRÖÖDÄFBÄRÖÖDÄYVÖÖD	G
FE	HFEHEFG	ÖÖUEJÄFBÄRÖÖDÄFBÄRÖÖDÄYED	G
FF	HFEHEFI	ÖÖUEJÄFBÄRÖÖDÄFBÄRÖÖDÄYED	I
FG	HFEHEG	ÜWÖSÄUWUSÖUT ÖSÖFÄUÜÖQDÄYI FEI UD	I
FH	HFEHEH	II »PYÖÄPUUOÄFBÄSUFBÄRÖÖDÄFBÄRÖÖDÄYD	F
FI	HFEHEI	ÖÖUEJÄFBÄRÖÖDÄFBÄRÖÖDÄFBÄRÖÖDÄYVÜD	G
FÍ	HFEHEI €	ÖÖUEJÄFBÄRÖÖDÄFBÄRÖÖDÄYVÜD	G



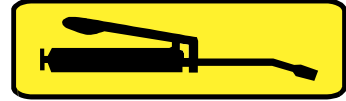


QOT	PU	Ó^&ãä }	U' æ æ
F	WpEGJEEFEI I	PYÖEP UUOÄD ASUA'D ARO'QDY A'D ARO'QDY A'I I	G
G	WpEGJEEFEI I	PYÖEP UUOÄD ASUA'D ARO'QDY A'D ARO'QDY A'I I	G
H	WpEGJEEFEH F	PYÖEP UUOÄD ASUA'D ARO'QDY A'D ARO'QDY A'F	F
I	WpEGJEEFEI G	PYÖEP UUOÄD ASUA'D ARO'QDY A'D ARO'QDY A'G	F
I	WpEGJEEFEH H	PYÖEP UUOÄD ASUA'D ARO'QDY A'D ARO'QDY A'H	F
I	WpEGJEG FEI	PYÖEP UUOÄD ASUA'D ARO'QDY A'FEAU'UOQ DY A'F I	F
I	WpEGJEG FEI I	PYÖEP UUOÄD ASUA'D ARO'QDY A'FEAU'UOQ DY A'F I I	F
I	WpEGJEG FEH I	PYÖEP UUOÄD ASUA'D ARO'QDY A'FEAU'UOQ DY A'H I	G
J	HFEEGFE	ÖÖCEJA'D ARO'Q DA'D ARO'Q DA'D ARO'Q D'WOOD	G
FE	HFEHFF	ÖÖCEJA'D ARO'Q DA'D ARO'Q D'ED	G
FF	HFEHFG	JE>PYÖAQVQ'Ö A'FEAU'UOQ DA'D ARO'Q D	I
FG	HFEI EG	ÜWÖSA'UWUSOUÄ' ÖSOA'FEAU'UOQ D'UI FEI UD	I
FH	HFEH EI	ÖÖCEJA'FEAU'UOQ DA'D ARO'Q D'ID	F
FI	HFEH EG	ÖÖCEJOWSSA'P ÖÖQDA'D ARO'Q DA'D ARO'Q D'UVUDY QP A'WWD	G
FI	HFEH EI	ÖÖCEJA'D ARO'Q DA'FEAU'UOQ D'UVUD	G



Greasing

Locate the greasing decals (see illustration on right)



1. Use a manual grease gun.
2. Clean the couplers and fittings with a clean cloth prior to lubricating
3. Replace and repair damaged or broken couplers
4. If couplers are difficult to lubricate, remove them so as to be able to clean them thoroughly, and replace them if necessary Also clean the lubricant passageway
5. Inject lubricant until the excess is expelled through the bearing or bushing areas

During lubrication:

1. Use only a manual hand held grease gun.
2. Clean the couplers and fittings with a clean cloth prior to lubricating.
3. Replace fittings immediately if they damaged or broken.
4. If fittings are difficult to lubricate, remove and clean them thoroughly, and replace them if necessary. Also clean the lubricant passageway.
5. Inject lubricant until the excess is expelled through the bearing or bushing areas.

Types of Lubricants

1. Grease

Use an SAE multi-purpose high temperature grease with extreme pressure (EP) performance. A lithium-based SAE multi-purpose grease is also acceptable.

2. Gearbox reservoir oil

Use an SAE compatible 80W90 gear oil for all operating conditions.

3. Lubricants Storage

Always use clean and contaminant-free lubricants. Store them in clean, uncontaminated containers that have not been used to store other substances. Ensure the storage area is free of dust, humidity and other contaminants.



Warranty Policy on new S Houle equipment

S Houle Inc. offers a warranty on all new equipment for a period of **1 year after date of retail purchase**, according to the terms listed below:

1. **AN APPROVAL FROM S HOULE INC. IS REQUIRED BEFORE ANY REPAIRS OR WARRANTY CLAIMS, WITH ACCOMPANYING PHOTOS AND THE EQUIPMENT'S SERIAL NUMBER;**
2. All claims must be received **30 days after date of approval;**
3. The equipment is F.O.B. St-Germain-de-Grantham at all times;
4. All defective parts must be returned to S Houle Inc. or retrieved by a representative of the manufacture **within a period of 30 days following the warranty claim;**
5. The S Houle warranty covers all defects in material or fabrication of the products only, and therefore does not covers the normal wear or non-recommended utilization of the product. All breaks resulting from an accident or abusive use will not be covered by the warranty policy;
6. The warranty does not cover any traveling fees to gain access to the equipment for evaluation or repairs;
7. Only original parts or S Houle approved parts will be considered appropriate for warranty claims;
8. S Houle Inc. reserves the right to refuse any labor time deemed excessive for any repair work claimed on warranty.
9. The labor fees compensated on warranty claims may never exceed **100\$/hour;**
10. On request, S Houle Inc. can provide the service of a road mechanic to effect repairs, for a fee of 100\$/hour + travel fees of 0.60\$/km;
11. The standard color of all equipment out of the factory will be S Houle yellow unless specifically requested by the client;
12. The warranty policy does not apply to the **NORMAL WEAR PARTS** listed below:

Examples: Flow divider, cutting edges, bolts, nuts, spring blades, skid shoes, skid shoe bolts, sliders, chaines and chain hitches, cast iron shoes, hydraulic hoses, clutch and clutch components, gearboxes, driveshafts and others.

PURCHASER'S RESPONSIBILITIES

The present warranty presumes a correct maintenance and periodic inspections of the equipment by the owner, as described in the Owner's Manual provided with the equipment at time of purchase. The cost of regular maintenance or required servicing is the responsibility of the client. The buyer must conserve all receipts proving that the required maintenance has been respected.

EXCLUSIONS ON SUBSEQUENT MANUFACTURER UPGRADES

S Houle Inc. reserves the right to modify, change or improve any product with no obligation to replace or modify any previously purchased equipment.



S Houle inc.

300 Industrial blvd.
St-Germain-de-Grantham, Quebec, Canada, J0C 1K0
Phone : 819 395-4380 Fax. : 819 395-5516
Toll free : 1 888-404-4380
E-Mail : info@shoule.com Web: www.shoule.com

Product Registration

Dealer instructions:
Make sure registration is complete and signed.

Product Information :

MACHINE MODEL : _____ DELIVERY DATE : _____ / _____ / _____
mm dd yyyy

SERIAL NUMBER : _____

OPTIONAL EQUIPMENT : _____

Customer Information :

FIRST & LAST NAME : _____ PHONE : _____

MAILING ADDRESS : _____ EMAIL : _____
Civic number and street

_____ City

_____ State / Province _____ Zip Code

Dealer Information :

DEALER NAME : _____ PHONE : _____

MAILING ADDRESS : _____ EMAIL : _____
Civic number and street

_____ City

_____ State / Province _____ Zip Code

Signatures :

Owner or designated representative signature

Authorized dealer signature

Note : Both dealer and owner must sign in order to validate the warranty.

I hereby acknowledge that:

- | | |
|---|---|
| <ol style="list-style-type: none"> I have received and accepted delivery of equipment described. The equipment was checked thoroughly for loose or missing parts and has been adjusted in accordance with the pre-delivery checklist. I have been provided with and have carefully read the instruction manual. I have read and understand the nature and extent of the warranty and understand clearly that there were and are no other representations or warranties, either express or implied, made by anyone. A copy of the present document must be completed and transmitted to | <ol style="list-style-type: none"> S.Houle as soon as possible, in order to process your warranty. I have been advised on proper operation, maintenance and lubrication procedures of this equipment. I have been instructed on and do understand the application, limitations and capacities this equipment was designed and recommended for, all as described in the Instruction Manual and other literature published by S.Houle inc. |
|---|---|

ONE YEAR WARRANTY COVER PARTS ONLY, EFFECTIVE WHEN THIS FORM HAS ALL APPLICABLE INFORMATION COMPLETED, IS SIGNED BY BOTH THE OWNER AND THE DEALER AT THE TIME OF DELIVERY, THEN FORWARDED TO **S HOULE INC.** WARRANTY SERVICE MAY BE DENIED IF THIS FORM CONTAINS FALSE INFORMATION IS OR INCOMPLETE.



S Houle inc.

300 boul. Industriel
St-Germain-de-Grantham, Québec, Canada, J0C 1K0
Tél : 819 395-4380 Téléc. : 819 395-5516
Sans frais : 1 888-404-4380
Courriel : info@shoule.com Site : www.shoule.com

S Houle inc.

300 Industrial blvd
St-Germain-de-Grantham, Québec, Canada, J0C 1K0
Phone : 819 395-4380 Fax. : 819 395-5516
Toll free : 1 888-404-4380
E-mail : info@shoule.com Web : www.shoule.com