

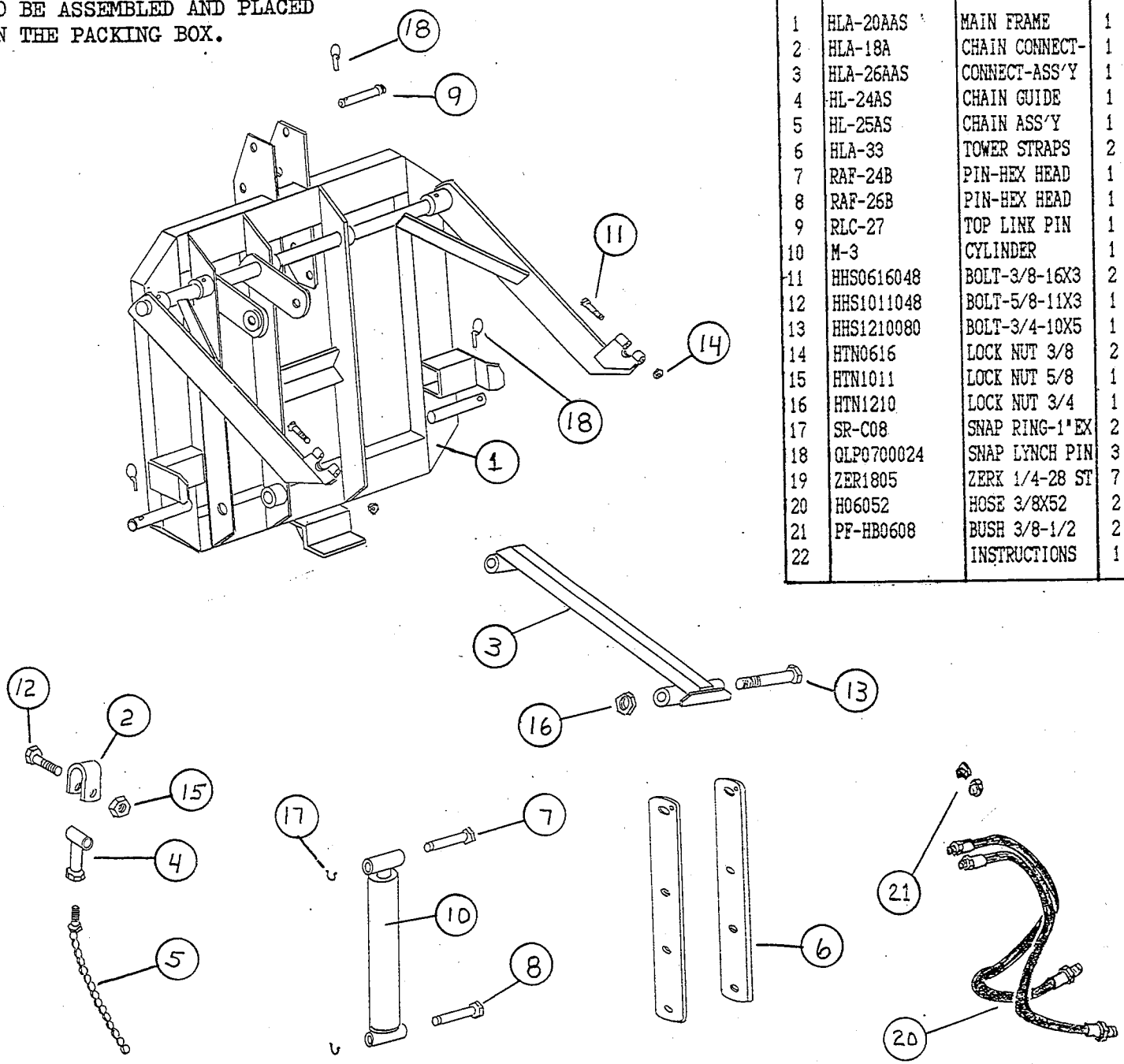
DRAWN BY SMR DATE 11/5/89 R.N. 1

PACKING LIST

BOX SIZE: _____ **PART NUMBER HL-20**

THE PARTS LISTED BELOW ARE TO BE ASSEMBLED AND PLACED IN THE PACKING BOX.

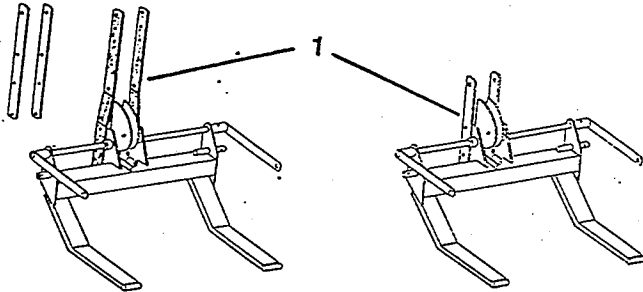
REF.	PART NUMBER	DESCRIPTION	QTY
1	HLA-20AAS	MAIN FRAME	1
2	HLA-18A	CHAIN CONNECT-	1
3	HLA-26AAS	CONNECT-ASS'Y	1
4	HL-24AS	CHAIN GUIDE	1
5	HL-25AS	CHAIN ASS'Y	1
6	HLA-33	TOWER STRAPS	2
7	RAF-24B	PIN-HEX HEAD	1
8	RAF-26B	PIN-HEX HEAD	1
9	RLC-27	TOP LINK PIN	1
10	M-3	CYLINDER	1
11	HHS0616048	BOLT-3/8-16X3	2
12	HHS1011048	BOLT-5/8-11X3	1
13	HHS1210080	BOLT-3/4-10X5	1
14	HTN0616	LOCK NUT 3/8	2
15	HTN1011	LOCK NUT 5/8	1
16	HTN1210	LOCK NUT 3/4	1
17	SR-C08	SNAP RING-1" EX	2
18	QLP0700024	SNAP LYNCH PIN	3
19	ZER1805	ZERK 1/4-28 ST	7
20	H06052	HOSE 3/8X52	2
21	PF-HB0608	BUSH 3/8-1/2	2
22		INSTRUCTIONS	1





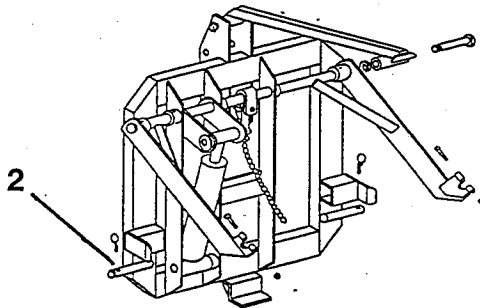
HL-20 Highlifter (Option) Installation and Adjustment

Installation



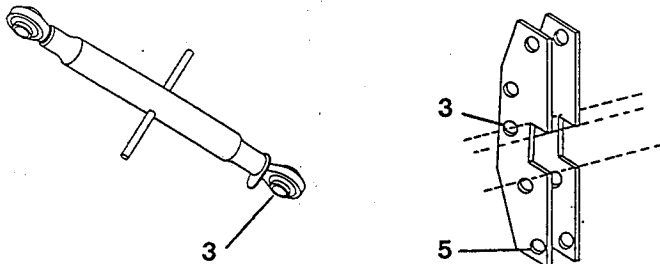
STEP-1

REPLACE LONGER TOWER STRAPS ON REAR-ENDER WITH THE SHORTER STRAPS THAT COME WITH THE HIGHLIFTER.



STEP-2

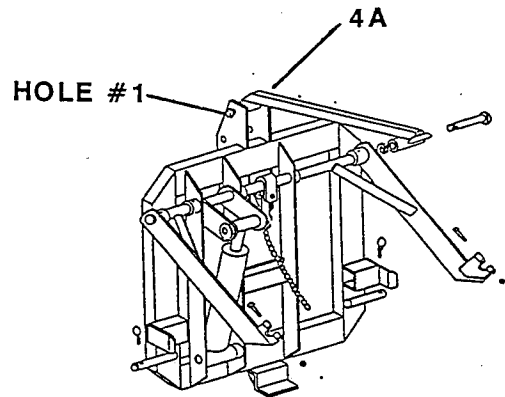
ATTACH HIGH LIFTER TO LOWER LINK ARMS OF TRACTOR BY SLIDING 3-PT PINS ON HIGHLIFTER THROUGH LOWER LINK ARMS AND SECURE WITH QUICK LYNCH PINS.



STEP 3

ATTACH TOP LINK OF TRACTOR TO HOLE #3 ON BACK OF HIGHLIFTER TOWER USING PIN AND QUICK LYNCH PIN. WHEN USED ON AUTO-DUMP FORKLIFT USE HOLE #5.

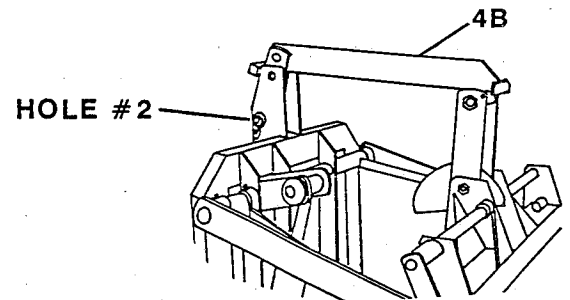
STEP: 4A WITH AUTO-DUMP BUCKET



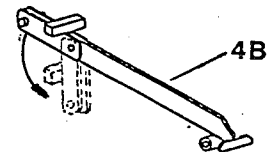
STEP: 4A

ATTACH CONNECTOR BAR TO HIGHLIFTER USING BUSHING AT 45° END TO HOLE #1 WITH PIN AND QUICK LYNCH PIN.

STEP: 4B WITH FORKLIFT

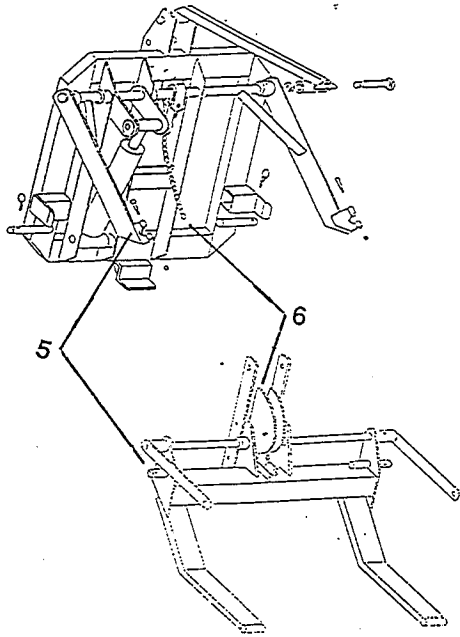


HINGE DOWN TO INSTALL



STEP: 4B

FOR AUTO-DUMP WITH FORKLIFT ATTACH SPECIAL FORKLIFT CONNECTOR TO HIGHLIFTER USING BUSHING END WITH SQ. BAR TO HOLE #2 USING PIN AND QUICK LYNCH PIN (SQ. BAR TOWARDS TRACTOR AS SHOWN) BUMPS AGAINST TOWER PLATES.

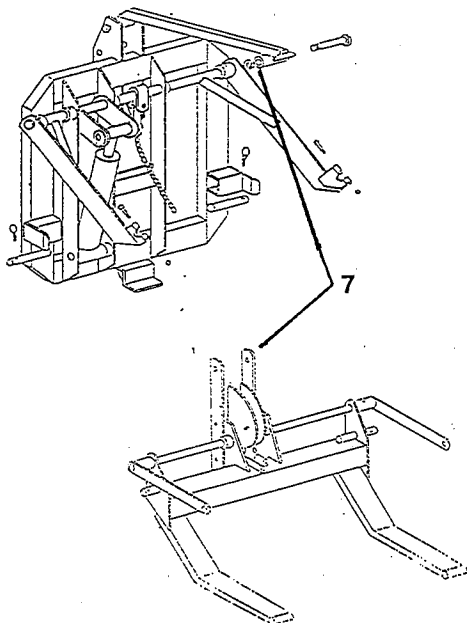


STEP-5

CONNECT LIFT ARMS ON HIGHLIFTER TO REAR-ENDER.

STEP-6

CONNECT CHAIN ON HIGHLIFTER TO CAM ON REAR-ENDER.



STEP-7

CONNECT THE CONNECTOR BAR TO THE TOP HOLE IN THE REAR-ENDER TOWER UPRIGHT USING 3/4 x 5 BOLT & LOCKNUT.

ADJUSTMENT

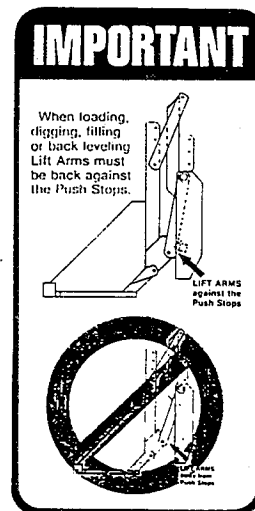
HOOK UP HOSES TO CYLINDER AND TO TRACTOR HYDRAULICS.

RAISE 3-PT. SLOWLY USING YOUR TRACTOR 3-PT. LEVER. WATCH FOR ANY PART OF THE HIGHLIFTER WHICH COULD HIT THE TRACTOR BEFORE IT IS COMPLETELY RAISED AND STOP BEFORE IT DOES. LOWER UNIT AND ADJUST THE UPPER LINK DOWN ONE SET OF HOLES AND TRY AGAIN. IF IT STILL HITS GO TO THE BOTTOM SET OF HOLES.

NOW ACTIVATE THE TRACTOR VALVE THAT CONTROLS THE CYLINDER ON THE HIGHLIFTER. AGAIN WATCH AS YOU RAISE THE REAR-ENDER SLOWLY AND SEE IF IT IS GOING TO HIT SOMEPLACE. IF IT IS YOU CAN ADJUST IT UP TO THE NEXT SET OF HOLES.

REAR-ENDER BUCKET RUNNER SHOULD BE PARALEL WITE GROUND TO START WITH. YOU CAN GET THIS ADJUSTMENT BY ADJUSTING THE TURNBUCKLE ON THE UPPER LINK OF YOUR TRACTOR.

NOTE: BY ADJUSTING THE TURNBUCKLE ON THE UPPER LINK YOU CAN CONTROL THE DIG OF THE REAR-ENDER.



NOTE:

REPLACE DECAL IF DESTROYED ORDER PART # DE-HLI.