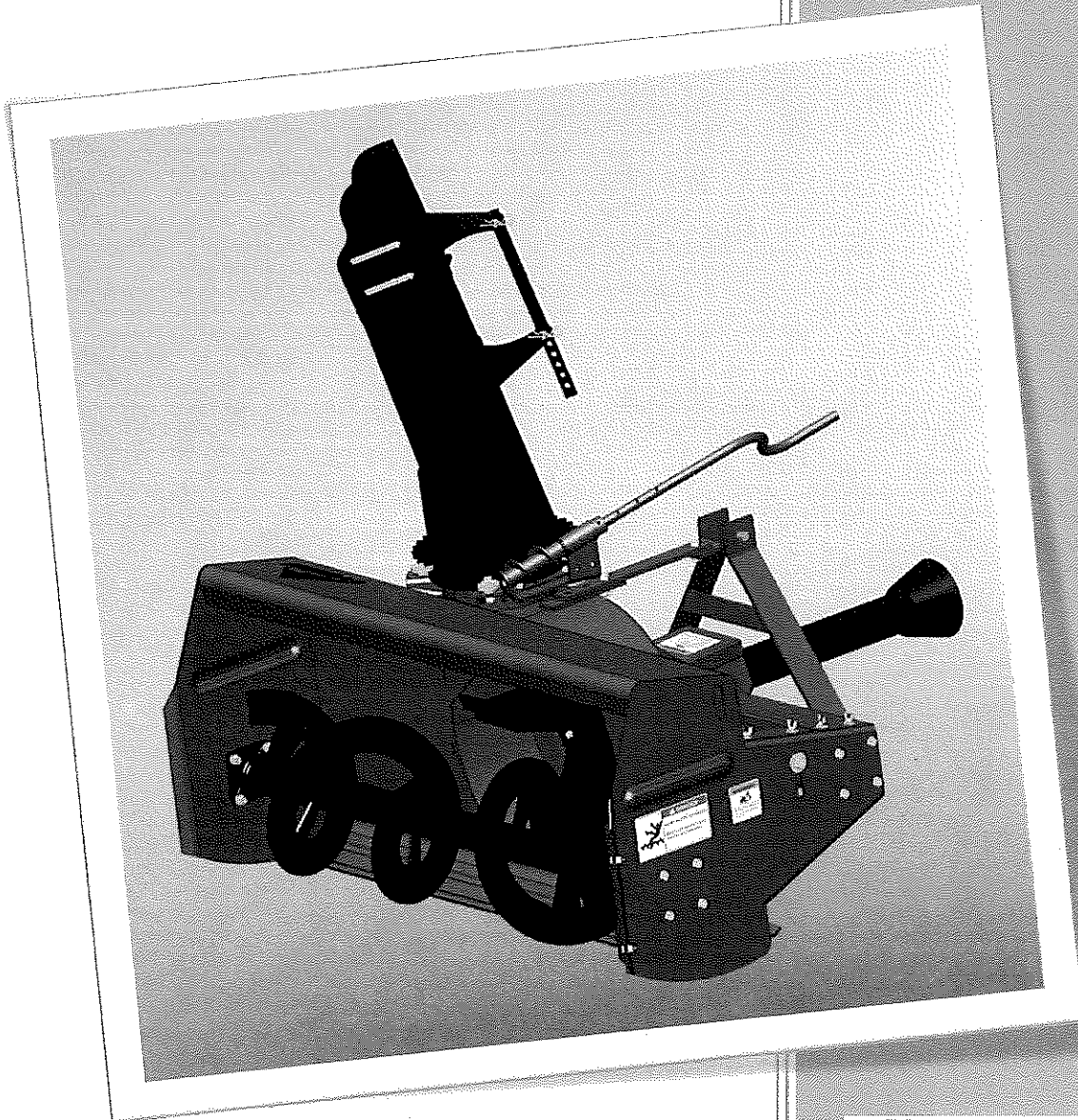




**EVEREST**

**6060**

**OPERATOR AND PARTS MANUAL**



**G**ENERAL  
**M**ETAL  
FABRICATION LTD.

## Contents

INTRODUCTION .....	3
SAFETY .....	4
SAFETY DECALS .....	5
GENERAL SAFETY .....	6
LIMITED WARRANTY .....	7
LIMITED WARRANTY CONT'D.....	8
ASSEMBLY INSTRUCTIONS .....	9
<i>ASSEMBLY INSTRUCTIONS - CONT'D</i> .....	10
PREPERATION FOR USE.....	11
PREPERATION FOR USE - CONT'D.....	12
OPERATING INSTRUCTIONS .....	13
MAINTENANCE .....	14
MAINTENANCE - CONT'D.....	15
PARTS .....	16
PARTS - CONT'D .....	17
PARTS LIST .....	18
PARTS LIST-CONT'D.....	19
GEARBOX PARTS.....	20
GEARBOX PARTS LIST.....	21

Printed in Canada

10/2011

## **INTRODUCTION**

General Metal Fabrication has been producing high quality farm equipment for over 15 years. Our line of Everest Snow blowers are manufactured using top quality material and workmanship. We feel confident that this equipment will meet your expectations in reliability and performance when used as designed. This manual is to assist you in the safe assembly, maintenance, and operation of the Everest snow blower. It also has a parts list to help you when replacement parts are required. Everest Snow Blowers are available in a wide range of sizes.

The care you give your Everest product will greatly determine your satisfaction with its performance and its service life. We urge a careful study of this manual to provide you with a thorough understanding of your new implement before operating, as well as suggestions for operation and maintenance and storage.

If this manual should become lost or destroyed we will be glad to provide you with a new copy.

As an authorized Everest manufacturer, we stock genuine Everest parts which are fabricated with the same precision and skill as our original equipment.

Should you require additional information or assistance please contact us.

THE ILLUSTRATIONS AND INFORMATION CONTAINED WITHIN THIS MANUAL ARE CURRENT AT THE TIME OF PUBLICATION. EVEREST MAINTAINES AN ONGING PROGRAM OF PRODUCT IMPROVEMENT, THEREFORE WE RESERVE THE RIGHT TO MAKE IMPROVMENTS IN DESIGN OR CHANGES IN SPECIFICATIONS WITHOUT INCURRING ANY OBLIGATION TO INSTALL THEM ON UNITS PREVIOUSLY MANUFACTURED.

MODEL: \_\_\_\_\_

SERIAL: \_\_\_\_\_

DATE OF PURCHASE: \_\_\_\_\_

DEALER NAME: \_\_\_\_\_


## SAFETY

Remember YOU are the key to safety. Do not risk damage to the product, personal injury or death. It is essential that you read the safety instructions and before you operate this snow blower.

**Note:** our products are designed to be safe and dependable. It is the owner's responsibility that anyone operating this equipment reads and understands this manual and the operation of the equipment before operating.

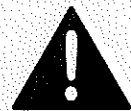
## SAFETY DECALS

- Keep decals clean and readable.
- Replace safety decals if damaged and or not readable.
- New decals are available from your dealer or manufacturer.

The "Safety Alert Symbol" () in conjunction with a "Signal Word" (CAUTION, WARNING or DANGER) is used if there is a possible personal injury or death hazard

### NOTICE

To address practices not related to personal injury. The safety alert symbol shall not be used with this signal word.



### CAUTION

Indicates a potentially hazardous situation which, if not avoided, could result in minor or moderate injury.



### WARNING

Indicates a potentially hazardous situation which, if not avoided, could result in death or serious injury.



### DANGER

Indicates an immediate hazardous situation which, if not avoided, will result in death or serious injury. This signal word is to be limited to the most extreme situations and if guards cannot be added for functional purposes.


**SAFETY DECALS**

**⚠ CAUTION**

- Read Operator's Manual before using.
- Only trained, competent persons shall operate this equipment.
- Keep all shields in place.
- Keep hands, feet, clothing and hair away from moving parts.
- Stop engine, set brake, remove key and wait for all moving parts to stop moving before servicing, adjusting, repairing and unplugging.
- Review safety instructions annually.

105069

**⚠ WARNING**



- Ensure safety shields are in place and in good condition before operating.
- Always remove tractor keys, set park brake and place implement in lowest position when unattended.
- Ensure rotation of all components has stopped before servicing.
- Check PTO shaft length before raising or lowering implement. Shaft must not bottom or separate. (See manual)

105068

**⚠ DANGER**



**AVOID INJURY OR DEATH**

Keep a safe distance when machine is in operation.

105071

**⚠ WARNING**



**AVOID INJURY OR DEATH**

Do not operate with shields removed.

105067

**⚠ WARNING**

**YOU MUST NOT OPERATE THIS MACHINE UNLESS:**

- You are trained in it's safe operation and;
- You know and follow manufacturer's safety and operating instructions as outlined in the Operator's Manual.

An untrained operator subjects himself and others to serious injury or death.

104366

To promote safe operation, safety decals are provided on all products manufactured. Because damage can occur to decals in everyday use or in reconditioning, replacement decals are available, to install decals make sure the surface is clear and free from oil. Decide on the exact location before removing backing paper. Decal package includes Everest Logo

Decal package Part Number 105162

## ***GENERAL SAFETY***

In addition to the design and configuration of equipment, hazard control and accident prevention are dependent upon the awareness, concern, prudence and proper training of personnel in the operation, transportation, maintenance and storage of equipment. Lack of attention to safety can result in accident, reduction of efficiency, personal injury or loss of life. Watch for safety hazards and correct them immediately. Use the following safety precautions as a general guide to safe operations when operating this machine. Additional safety precautions are used throughout this manual for specific operating and maintenance procedures. Read this manual and review the safety precautions often.

- Read the instructions carefully. Be familiar with the controls and all the cautions related to this equipment.
- Never allow children, or people not familiar with these instructions to operate this equipment.
- Never carry passengers.
- The operator is responsible for accidents or hazards occurring to people or property. The operator should cease operations whenever anyone comes within the operating area.
- Clear the work area of objects that might be picked up and thrown.
- Do not operate without all guards and shields in place and in good condition.
- Before starting or operating the machine, make a walk around inspection and check for obvious defects, such as loose bolts and damaged components. Correct any problems before starting.
- Lower implement to the ground, stop tractor engine, apply parking brake, and allow all component to completely stop before leaving the tractor.
- Keep hands and feet clear of any rotating or moving components.
- Wear personal protective equipment such as, but not limited to, protection for the eyes, ears, feet, hands and head when operating or repairing the equipment. Do not wear loose clothing or jewelry that may catch on equipment moving parts.
- Never stand between implement and tractor while tractor is being backed to the hitch.
- When performing maintenance or adjusting implement, first lower it to the ground or block it securely at a workable height.
- Use tractor flashing warning light, day or night, when transporting implement on road or highways unless prohibited by law.
- It is recommended that tractors be equipped with rollover protective systems (ROPS) and seat belts are used in all operations.

## Limited Warranty

### **This Document limits Your Warranty Rights**

#### **Base Limited Warranty**

General Metal Fabrication Ltd. provides this warranty only to the original retail purchaser of this product. General Metal Fabrication Ltd. warrants to such purchasers that all Bauman / Everest manufactured parts and components used and serviced as provided for in the Operator's Manuals shall be free from defects in material and workmanship for a period following delivery to the original retail purchaser of 12 months (90 days for commercial applications). Parts and components manufactured by others are subject to their manufacturer's warranties, if any.

General Metal Fabrication Ltd. will fulfill this limited warranty by, at its' option, repairing or replacing any covered part that is defective or is the result of improper workmanship, provided the part or parts are returned to General Metal Fabrication Ltd. within thirty (30) days of the date that such defect or improper workmanship is, or should have been, discovered. General Metal Fabrication reserves the right to either inspect the product at the buyer's location or have it returned to the factory for inspection. Parts must be returned through the selling representative and the buyer must prepay transportation charges.

General Metal Fabrication Ltd. will not be responsible for repairs or replacements that are necessitated, in whole or part, by the use of parts not manufactured by or obtained from General Metal Fabrication Ltd. Under no circumstances are component parts warranted against normal wear and tear. There is no warranty on components that require replacement as part of normal maintenance. The purchaser is solely responsible to determine suitability of goods sold. This warranty is expressly in lieu of all other warranties expressed or implied. General Metal Fabrication will in no event be liable for any incidental or consequential damages whatsoever, nor for any sum in excess of the price received for the goods for which liability is claimed.

#### **Repair Parts Limited Warranty**

General Metal Fabrication Ltd. warrants Bauman / Everest replacement parts purchased after the expiration of the General Metal Fabrication Ltd. limited Warranty, and used and serviced as provided for in the Operator's Manual, to be free from defects in material or workmanship for a period of thirty (30) days from the invoice date for the parts. General Metal Fabrication Ltd. will fulfill this limited warranty by, at its option, repairing or replacing any covered part that is defective or is the result of improper workmanship, provided that the part is returned to General Metal Fabrication Ltd. within thirty (30) days of the date that such defect or improper workmanship is, or should have been, discovered. Such parts must be shipped to General Metal Fabrication Ltd. at the purchaser's expense.

#### **What is Not Covered?**

Under no circumstances does this limited warranty cover any components or parts that have been subject to the following: negligence; alteration or modification not approved by General Metal Fabrication Ltd.; misuse; improper storage; lack of reasonable or proper maintenance, service, or repair; normal wear; damage from failure to following operating instructions; accident; and or repairs that have been made with parts other than those manufactured, supplied, and or authorized by General Metal Fabrication Ltd.

## Limited Warranty Cont'd

### Authorized Dealer and Labour Costs

Repairs eligible for labour under this limited warranty must be made by General Metal Fabrication Ltd. or an authorized Bauman / Everest dealer. General Metal Fabrication Ltd. retains the exclusive discretion to determine whether it will pay labour cost for warranty repairs or replacement, and the amount of such costs that it will pay and the time in which the repairs will be made. If General Metal Fabrication Ltd. determines that it will pay labour cost for warranty work, it will do so by issuing a credit to the Dealer's or Distributor's account. General Metal Fabrication Ltd. will not approve or pay invoices sent for repairs that General Metal Fabrication Ltd. has not previously approved. Warranty service does not extend the original term of this limited warranty.

### Warranty Labour

Any labour subject to warranty must be authorized by General Metal Fabrication Ltd. The labour rate for replacing defective parts, where applicable, will be credited at 100% of the dealer's posted shop rate.

### Warranty Requirements

If the Dealer or Distributor decides to purchase replacement components before the warranty disposition of such components is determined, General Metal Fabrication Ltd. will bill the customer for such components and then credit the replacement invoice for those components later determined to be covered by this limited warranty. Any such replacement components that are determined not to be covered by this limited warranty will be subject to the terms of the invoice and shall be paid for by the purchaser.

### Warranty Claims

Warranty requests must be prepared on General Metal Fabrication Ltd. warranty Claim Forms with all requested information properly completed. Warranty Claims must be submitted within a thirty (30) day period from date of failure repair.

### Exclusive Effect of Warranty and Limitation of Liability

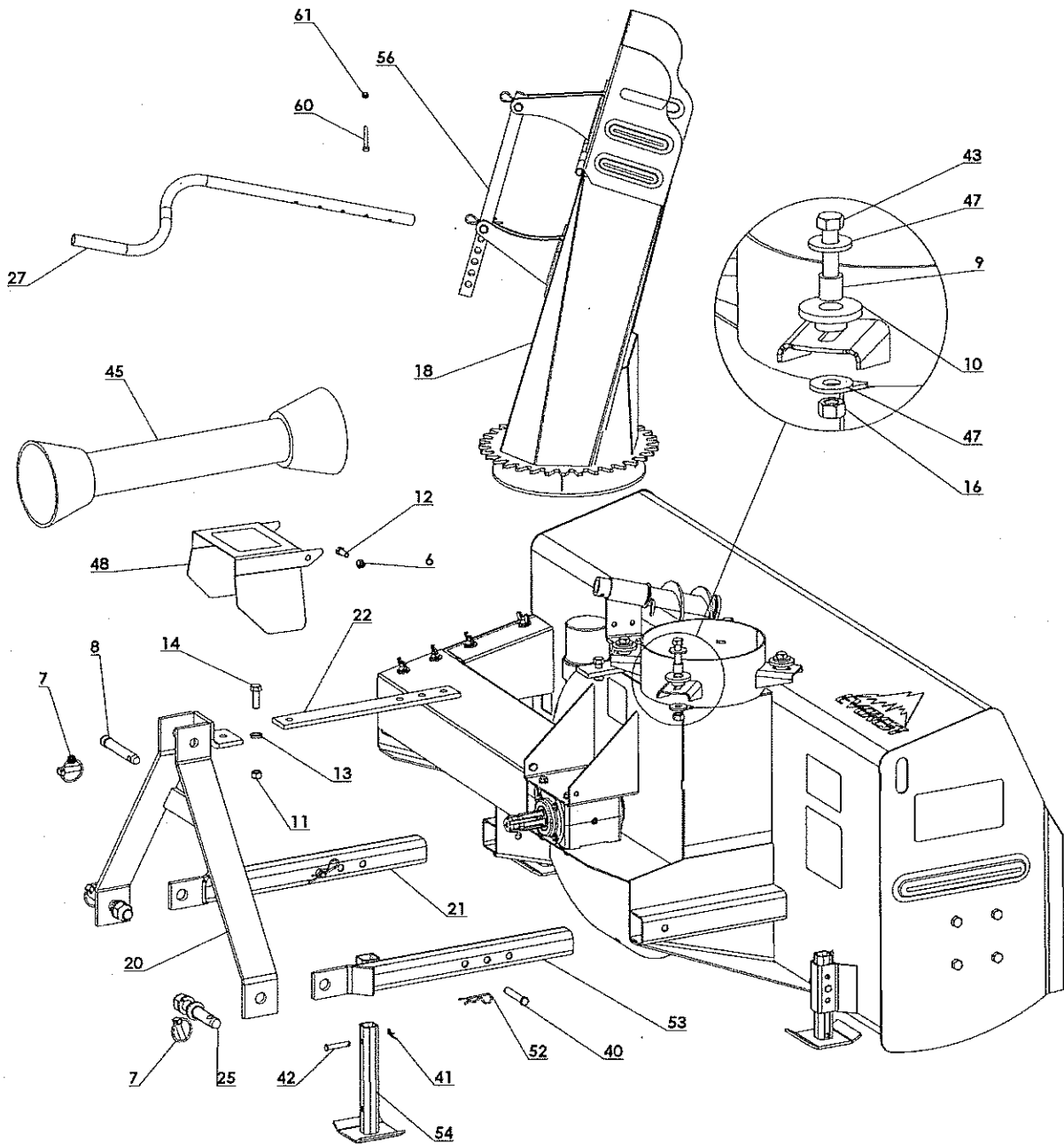
To the extent permitted by the law, General Metal Fabrication Ltd. disclaims any warranties, representations, or promises express or implied, as to the quality, performance, or freedom from defect of the components and parts covered by this warranty and not specifically provide for herein.

To the extent permitted by law, General Metal Fabrication Ltd. disclaims any implied Warranties of merchantabilities and fitness for a particular purpose on its products covered herein, and disclaims any reliance by the purchaser on General Metal Fabrication Ltd. skill or judgment to select or furnish goods for any particular purpose. The purchaser's only and exclusive remedies in connection with the breach or performance of any warranty on product manufactured by General Metal Fabrication Ltd. are those set forth herein. In no event shall General Metal Fabrication Ltd. be liable for incidental or consequential damages (including by way of example only and not limitation, loss of crops, loss of profits or revenue, other commercial loss, inconvenience, or cost of replacement of rental equipment). In no event shall General Metal Fabrication Ltd. contract or warranty liability exceed the purchase price of the product.

**Note:** Snowblower fan shafts and Finishing Mower blades carry no warranty.



**ASSEMBLY INSTRUCTIONS**



**ASSEMBLY INSTRUCTIONS**

1. Slid the two hitch frame inserts into the body weldment (#21, 53) securing them into place with clevis pins (#40) and hair pin clip (#52). Note: Start by placing pin setting in the first hole and adjust later to accommodate PTO length.
2. Fasten hitch stand (#54) into hitch frame insert (#53) secure in place with clevis pin (#42) and hair pin clip (#41). Note: this step should be done to carry the weight of the hitch weldment.

---

***ASSEMBLY INSTRUCTIONS – cont'd***

3. Fasten hitch weldment (#20) to hitch frame inserts (#21, 53) securing them in place with the cat 1 pins(#25)
4. Bolt hitch weldment (#20) to hitch top arm (#22) then to the snow blower body using ½" x 1 ½" bolt, lock washer, and nut. Make sure the hitch is straight, use the same hole placement on top as on bottom.
5. Bolt the PTO shield (#48) in place using 3/8" x 1" bolts, and lock nut (#6, 12).
6. Slid spout (#18) onto top of snow blower, bolt in place using ½" x 2" bolts, flat washers, lock washer, rollers, and bushings. There should be a flat washer on top of the roller and bushing as well as a flat washer below the mounting plate. Note: do not over torque these bolts.
7. Attach PTO fully to gearbox making sure it is locked in place.

## PREPERATION FOR USE

### Connecting to tractor

Make sure the tractor and the snow blower are on level dry ground free from foreign objects.

- Move tractor to snow blower slowly making sure no person or pet is between tractor and implement.
- Adjust the three point arms to be parallel with the lift pins.
- Set the parking brake, remove ignition key before dismounting the tractor.
- Attach the three point arms to the lift pins and locks in place with lynch pins provided.
- Fasten the top arm of the tractor to the link pin in the hitch weldment.
- With the tractor engine shut off, fasten the PTO shaft; both ends of the PTO have a standard 6-spline end with a spring loaded locking collar. To activate the spring loaded locking collar turn the collar clockwise, then slide onto the splined shaft. The yoke must lock into the groove of the splined shaft on the tractor and the gearbox. Always check to see that the yokes are securely attached before each use. Fasten the safety chains provided with the PTO shaft, allowing sufficient slack for the driveline during cornering and operations.
- **NOTE:** Due to the many variations in tractor hitches and PTO locations. Drivelines may need to be shortened to ensure proper length.
  - Pull driveline apart. Attach outer (Female) section to the tractor PTO shaft, making sure they are secure.
  - Raise and lower implement to determine shortest distance between tractor PTO and snow blower input shaft. Shut down tractor leaving implement in position of shortest distance. **SECURELY BLOCK IMPLEMENT IN POSITION.**
  - Hold driveline sections parallel to each other to determine if it is too long. Each section should end approximately 3 inches short of reaching universal joint shield on opposite section.
  - If the required driveline length is greater than length of the shaft, move the hitch mounting locations on the snow blower until the correct position is achieved.
  - If the drive line is still too long measure 3 inches back from universal joint shield and mark opposite section. Do this for both sections.
  - Raise and lower snow blower to determine longest position between tractor PTO and snow blower input shaft. Shut down tractor and securely block snow blower in position.
  - Hold the drive line parallel to each other and check for a minimum of 6 inch overlap. If driveline has been marked for cutting the overlap will be the distance between marks. **NOTE:** if driveline is the correct length disregard cutting procedures.

## ***PREPERATION FOR USE – cont'd***

- Clamp end of driveline in vice. Cut off shield where marked. Using the cut off section of shield as a guide, cut shaft the same amount. NOTE: when finished cutting, the shield will be shorter than the shaft. Deburr driveline sections and clean away all chips and filings.
- Repeat cut procedure to other driveline section.
- Apply multi-purpose grease to outside of male driveline section. Assemble driveline and install onto tractor and snow blower. Pull on each driveline section to ensure yokes lock into position. Make sure driveline shielding is in place and in good condition.
- Start the engine, and raise the mower slightly.
- Adjust the three point hitch arms to level, and center the snow blower behind the tractor.
- Adjust the turnbuckle on the top of the three point hitch to level the snow blower from front to back.

## **SKID SHOES**

After attaching the tractor to the snow blower, ensure that the snow blower cutting edge is parallel to the ground when skid shoes are touching the ground. If not, adjust the skid shoes accordingly.

- If the surface is soft / uneven or contains gravel, stones or other material that might be easily picked up and thrown by the snow blower, then a lower position should be used, thereby increasing the working clearance between the surface and the cutting edge.
- If the surface is hard and smooth like concrete or asphalt, skid shoes should be placed in the highest position to minimize residual snow following each pass.
- Before performing maintenance or adjustments to the skid shoes refer to general safety page 7 of this manual.
- Skid shoes must be adjusted so they contact the ground evenly on both sides. Finer adjusting can be done using the top link of the 3 point hitch so that the skid shoes have full contact with the surface and the cutting edge is parallel to the ground.

## ***OPERATING INSTRUCTIONS***

### Check before each use

- Check tightness of chain, bolts, and other hardware.
- Clear the work area of anything that might be thrown, and check to ensure all bystanders are standing clear before starting.

### Field operation

- With the tractor running at slow idle engage the PTO control. Slowly increase the tractor engine RPM to achieve the rated PTO speed. Never exceed the rated speed.
- The PTO must run at a full PTO rpm rating for best performance. Slower drive speeds or multiple passes could be required for wet snow.
- Travel speed is governed by the operating conditions including the depth of the snow, the density (wetness) and the area being cleared including the surface and slopes. It is the responsibility of the operator to note the condition of the job being done and set the speed to obtain the proper clearing rate to maintain safe control of machine.

The PTO driveline is equipped with a shear bolt that protects the drive system components from shock loads if the machine strikes an obstruction. See parts section for appropriate replacement part.

### Operational hints

- Always ease the implement slowly into the snow. Do not allow engine of the tractor to lug or stall.
- In deep or heavy snow you may need to remove snow in several passes.
- Remember to disengage the PTO when raising or lowering the snow blower
- **DO NOT USE THE SNOW BLOWER TO PUSH SNOW- always engage snow with the snow blower operating.**

### Disconnecting from tractor

- Park on firm level area and clean the snow blower.
- Lower the snow blower until the tension is removed from hitch area.
- Disconnect the hitch arms and PTO shaft.
- Relieve any hydraulic pressure and remove hose from tractor.
- Cover the snow blower or store indoors to prevent rust.

## ***MAINTENANCE***

Always ensure the snow blower is properly installed, tractor is positioned on level ground with the park brake on, and the snow blower positioned on the ground. Shut off the engine remove and retain ignition key. Release any hydraulic pressure before performing any maintenance.

### **Check list before each use**

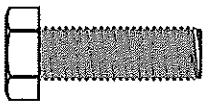



- Inspect fan blades and flighting to be sure no foreign objects such as wire or rope are wrapped around them.
- After 8 hour of use.
  - Grease PTO crosses daily (or 8 hours of operation) with multi-purpose grease. In extreme PTO angle applications cross kits most be greased more frequently
  - PTO driveline shield – Apply 2-3 shots of multi-purpose grease on plastic fitting.
- After 100 hours of use.
  - Grease all bearings with multi-purpose grease. DO NOT OVER GREASE.
- After 500 hours of use
  - The gearbox should be filled with SAE 90 oil to the bottom of level plug when shipped. Check the gearbox before using, at regular intervals. See that this oil level is maintained.

## MAINTENANCE - cont'd

### BOLT TORQUE

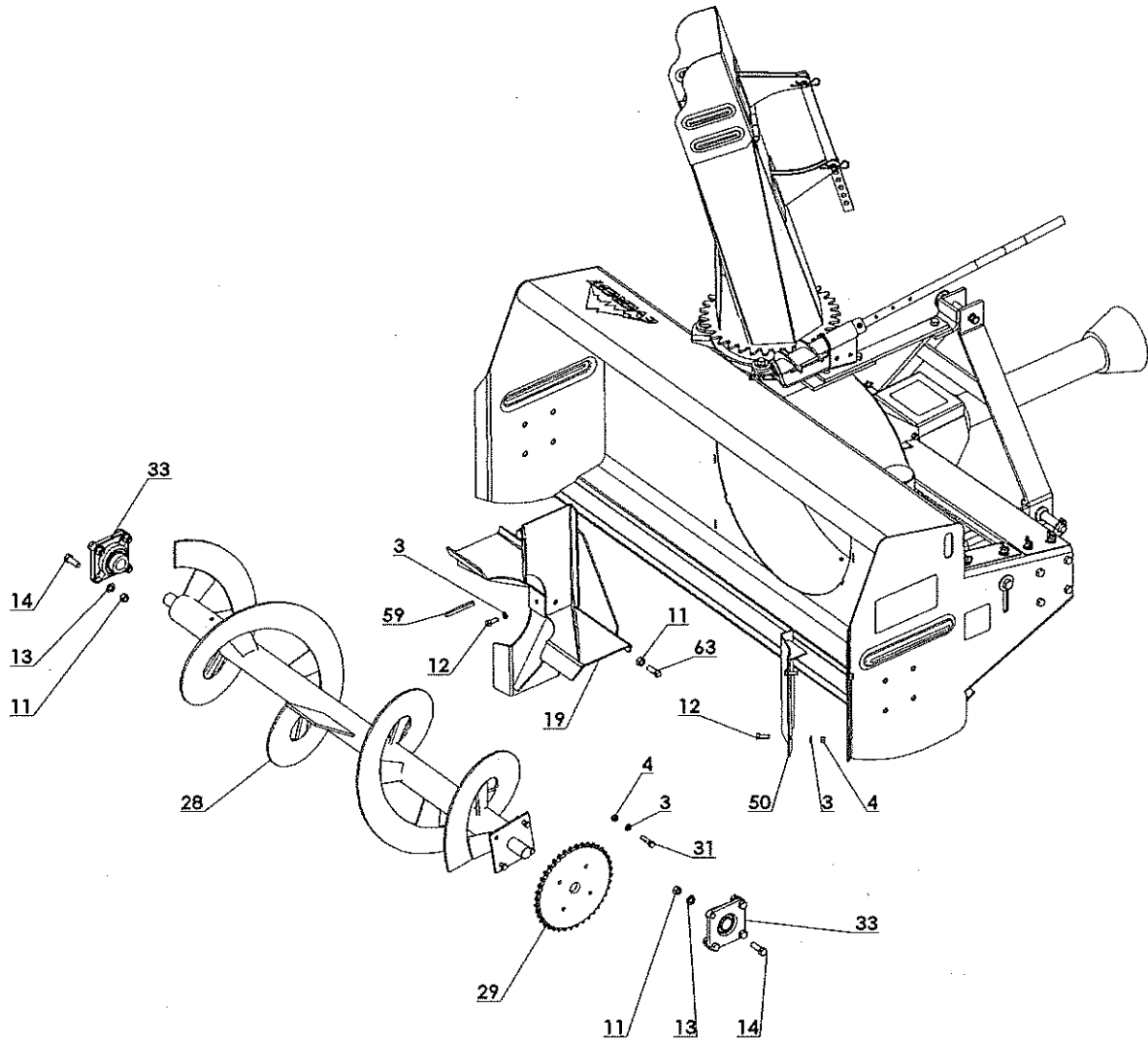
The following ft-lbs torque values are advisory only. Extreme caution should be used when using torque/tension relationships. Torque is only an indirect indication of tension. Under/over tightening of fasteners can result in costly equipment failure and/or personal injury.

No two bolts respond exactly the same to a given torque. There are numerous "real world" complications. Things such as dirt in a tapped hole, grease or oil on the threads, damaged threads, hole misalignment, accuracy of torque measuring device, and numerous other factors can alter the torque-tension relationship. Even perfect input torque can give a variation of preload by as much as 25%.

										
Bolt Diameter	Thread Series	SAE2			SAE5			SAE8		
		Oiled	As Received	Dry	Oiled	As Received	Dry	Oiled	As Received	Dry
1/4"	UNC	2.7	3	3.6	6.3	7.2	8.5	8.9	10.1	11.9
	UNF	3.1	3.5	4.1	7.2	8.2	9.7	10.2	11.6	13.6
5/16"	UNC	5.5	6.3	7.4	13.1	14.8	17.4	18.4	20.9	24.6
	UNF	6.1	6.9	8.2	14.5	16.4	19.3	20.4	23.1	27.2
3/8"	UNC	10	11	13	23	26	31	33	37	44
	UNF	11	13	15	26	30	35	37	42	49
7/16"	UNC	16	18	21	37	42	49	52	59	70
	UNF	18	20	23	41	47	55	58	66	78
1/2"	UNC	24	27	32	57	64	75	80	91	106
	UNF	27	31	36	64	72	85	90	102	120
9/16"	UNC	35	39	46	82	92	109	115	131	154
	UNF	39	44	51	91	103	121	128	146	171
5/8"	UNC	48	54	64	113	128	150	159	180	212
	UNF	54	61	72	128	145	170	180	204	240
3/4"	UNC	85	96	113	200	227	267	282	320	376
	UNF	94	107	126	223	253	297	315	357	420
7/8"	UNC	136	155	182	322	365	429	455	515	606
	UNF	150	171	201	355	403	474	502	568	669
1"	UNC	204	232	273	483	547	644	682	772	909
	UNF	229	260	306	542	614	722	766	867	1020

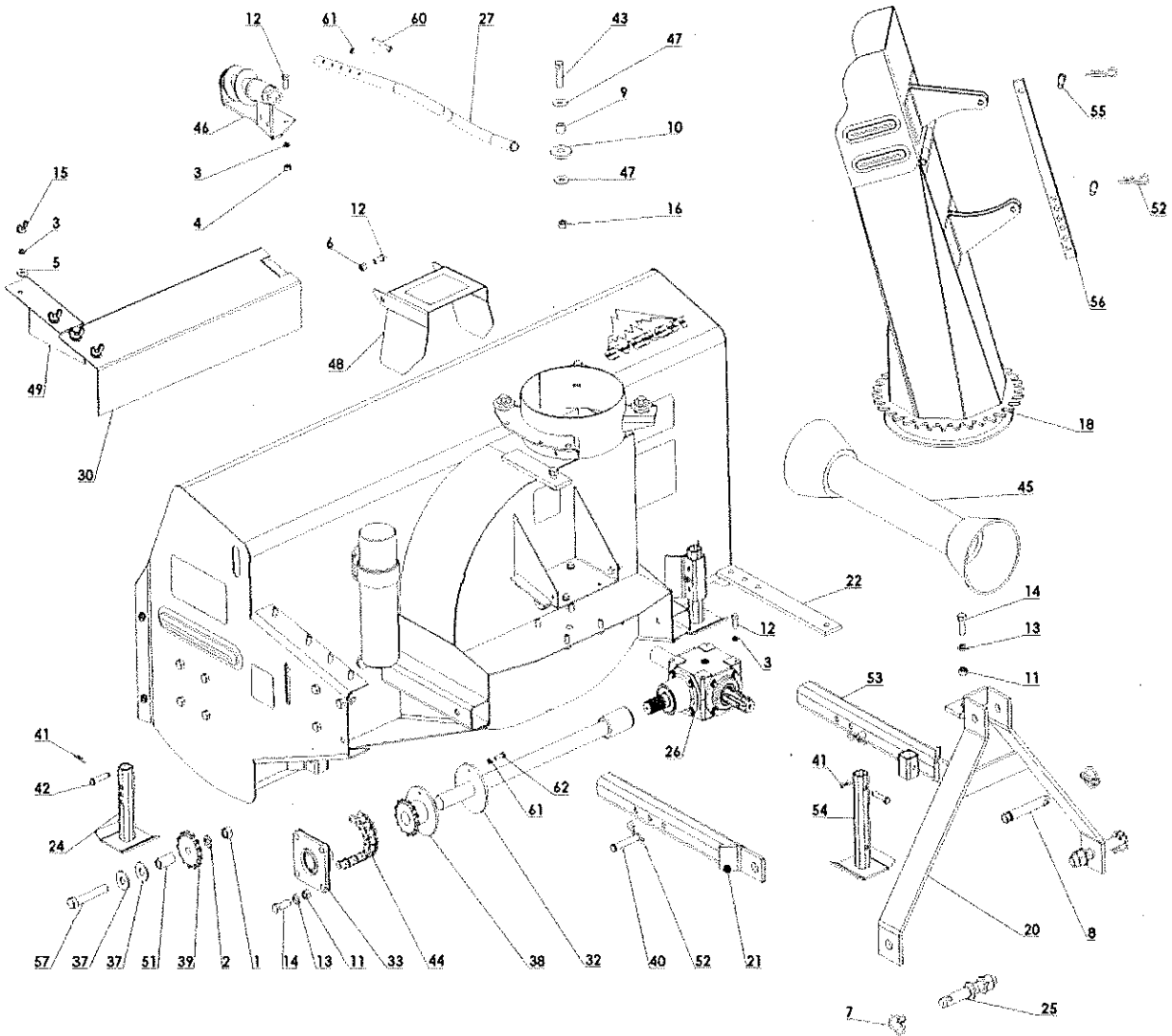
**All Values are in foot-pounds. To convert foot-pounds to inch-pounds, multiply by 12.**

PARTS





PARTS - cont'd



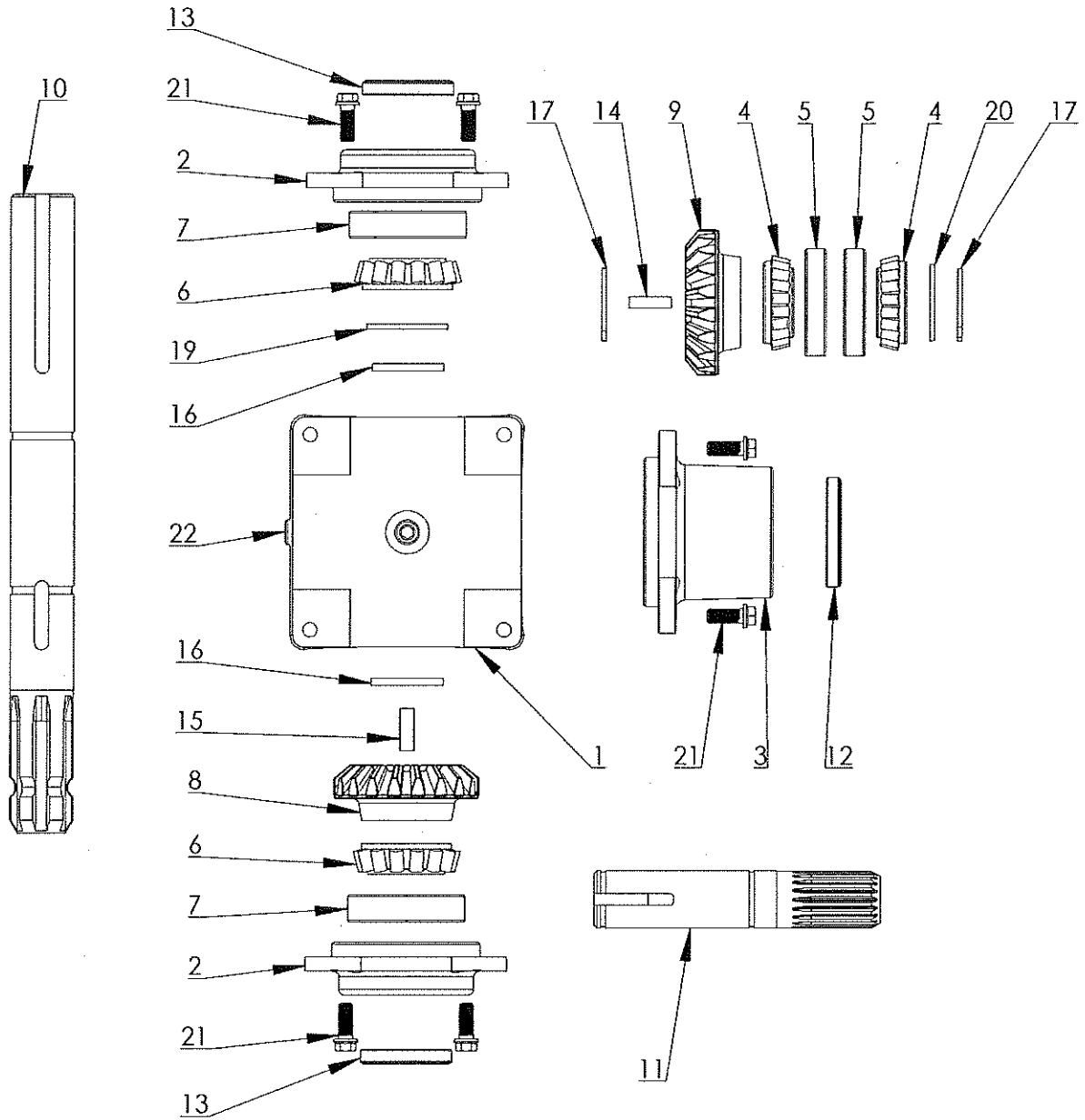
**PARTS LIST**

<b>ITEM</b>	<b>PART NO.</b>	<b>DESCRIPTION</b>
1	103997	NUT, HEX, GR5, PL, 5/8-11NC
2	103998	WASHER, LOCK, PL, 5/8
3	104000	WASHER, LOCK, PL, 3/8"
4	104001	NUT, HEX, GR2, PL, 3/8-16NC
5	104003	WASHER, FLAT, 3/8"
6	104015	Nut, Lock, Nylon Insert 3/8-16 NC
7	104032	HITCH LINCH PIN
8	104033	TOP LINK PIN 1
9	104242	BUSHING
10	104244	SPOUT ROLLER
11	104407	NUT, HEX, 1/2 NC
12	104409	BOLT, HEX, GR5, PL, 3/8-16NC X 1
13	104412	WASHER , LOCK, 1/2"
14	104424	BOLT, HEX, GR5, PL, 1/2-13NC X 1-1/2
15	104425	WING NUT 3/8"
16	104439	NUT, LOCK, PL, 1/2-13NC
17	104480	60" SNOW BLOWER BODY WELDMENT
18	104489	6072 & 6060 SPOUT
19	104520	60" FAN 4 BLADE
20	104542	60" BLOWER HITCH WELDMENT
21	104547	HITCH LOWER EXTENTION 60"
22	104550	HITCH TOP ARM
23	104552	NUT, HEX, GR5, PL, 5/16"
24	104554	LEG AND SKID PLATE
25	104556	CAT 1 HITCH PIN C/W NUT & WASHER
26	104573	GEARBOX 6060
27	104574	SPOUT TURN HANDLE
28	104584	60" FLIGHTING
29	104588	FLIGHTING SPROCKET 60A40
30	104590	FLIGHTING DRIVE SHEILD
31	104591	BOLT, HEX, GR5, PL, 3/8-16NC X 1 1/4
32	104598	FLIGHTING DRIVE SHAFT 60"
33	104620	BEARING ASSEMBLY 1-1/4"
34	104691	OWNER MANUAL CANASTER
35	104692	BOLT, HEX, GR5, PL, 5/16-18NC X 3/4
36	104693	WASHER, LOCK, 5/16"
37	104802	WASHER, FLAT, 5/8" USS
38	104811	SHEAR SPROCKET 60A13 (.25" BOLT HOLE)
39	104812	IDLER 60B13

**PARTS LIST-Cont'd**

<b>ITEM</b>	<b>PART NO.</b>	<b>DESCRIPTION</b>
40	104912	CLEVIS PIN SKID
41	104916	HAIR PIN CLIP #13
42	104927	CLEVIS PIN SKID 6060,6072
43	104958	BOLT, HEX, GR5, PL, 1/2-13NC X 2
44	104977	FLIGHTING DRIVE CHAIN 6060
45	104981	PTO 6060 SNOW BLOWER
46	104995	SPOUT ROTATOR DRIVE
47	105012	WASHER FLAT, 1/2" USS
48	105024	PTO SHIELD 6060
49	105025	CHAIN DRIVE SHIELD
50	105046	FLIGHTING SPROCKET SHEILD
51	105052	IDLER SPOCKET SPACER
52	105063	HAIR PIN CLIP #11
53	105074	HITCH LOWER EXTENTION 60"
54	105077	HITCH STAND
55	105083	CLEVIS PIN SPOUT DEFLECTOR
56	105084	SPOUT ADJUSTING ARM
57	105100	BOLT, HEX, GR8, PL, 5/8-11NC X 4
58	105162	DECAL PACKAGE
59	105183	FAN KEY 5/16" X 5/16" X 3 1/2"
60	105196	BOLT, HEX, GR5, PL, 1/4-20NC X 2
61	105197	NUT,STOVER LOCK, PL, 1/4-20NC
62	105198	BOLT, HEX, GR5, PL, 1/4-20NC X 1
63	105252	SET SCREW SQUARE HEAD 1/2" X 1 1/2"

# GEARBOX PARTS



**GEARBOX PARTS LIST**

ITEM	PART NO.	DESCRIPTION
1	105137	HOUSING
2	105138	END CAP
3	105139	QUILL
4	105140	BEARING CONE(LM67048)
5	105141	BEARING CUP
6	105142	BEARING CONE(LM48548)
7	105143	BEARING CUP
8	105144	GEAR DP6, TEETH 19
9	105145	GEAR DP6, TEETH 19
10	105146	SHAFT, CROSS
11	105147	SHAFT, QUILL
12	105148	SEAL, 31.75X60.4X8
13	105149	SEAL, 34.93X50.8X8
14	105150	SQUARE KEY, 6.35X23
15	105151	SQUARE KEY, 8X20
16	105152	SNAP RING
17	105153	SNAP RING
18	105154	GASKET
19	105155	WASHER
20	105156	WASHER
21	105157	CAPSCREW 5/16"-18UNCX3/4"
22	105158	1/4" NPT PIPE PLUG
23	105159	1/4" VENT PLUG
24	105160	O-RING

MANUFACTURED BY:



General Metal Fabrication Ltd

269 Manitoba Rd

Winkler MB R6W 4A9

Canada

Phone 1-204-325-9374

Fax 1-204-325-5175

[www.generalmetal.ca](http://www.generalmetal.ca)