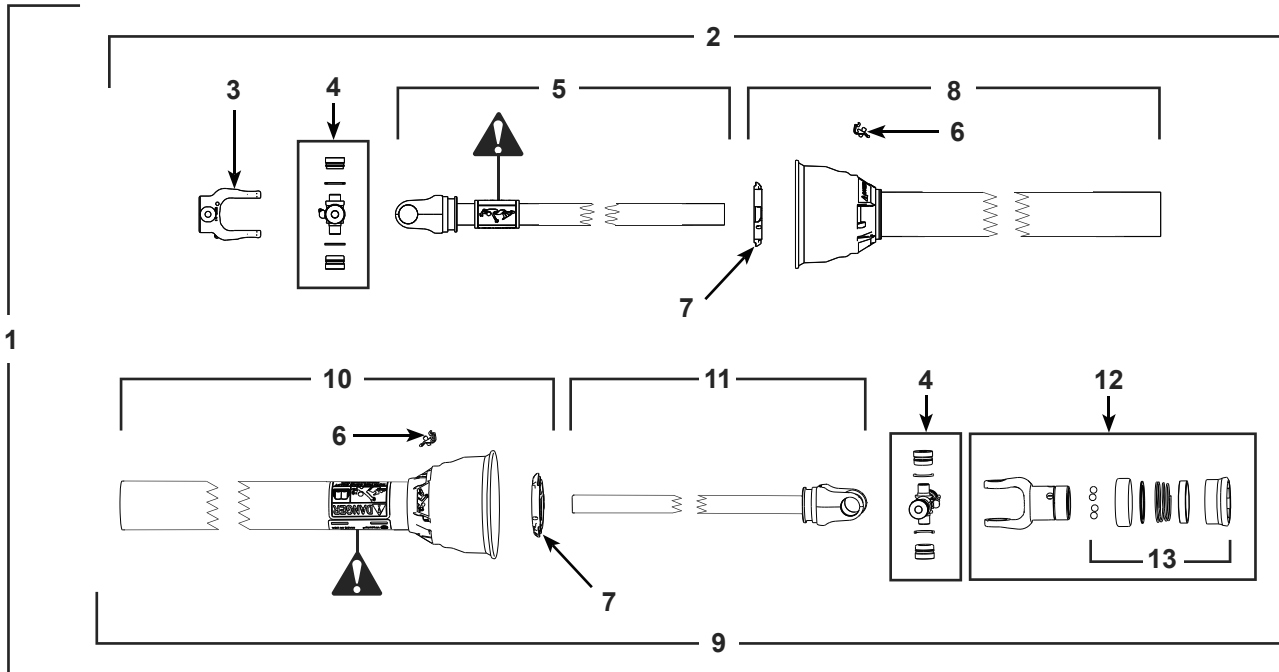


Driveline Parts



= Safety Sign Location

G20/40 DRIVELINE PARTS

REF. NO.	PART NO.	DESCRIPTION	QTY.
1	6807	Driveline Telescoping Assembly with Guard	1
2	20092	Digger Half with Guard	1
3	6809	End Yoke	1
4	6817	Center Cross Kit	2
5	6811	Yoke and Tube	1
---	20081	Easy-Lock Repair Kit (Includes REF. NOS. 6 - 7)	
6	20082	Easy-Lock	2
7	20083	Nylon Bearing	2
8	20094	Inner Guard (incl. Centralizer)	1
9	20093	Tractor Half with Guard	1
10	20095	Outer Guard	1
11	6812	Yoke and Shaft	1
12	7269	Spring-Lok Yoke Assembly	1
13	6131	Spring-Lok Kit	1

NOTE

G20/40 Serial Numbers 28599 and prior should call for parts.

DANGER

GUARD MISSING DO NOT OPERATE

DANGER

GUARD MISSING DO NOT OPERATE

DANGER

DANGER

ROTATING DRIVE SHAFT CONTACT CAN CAUSE DEATH KEEP AWAY!

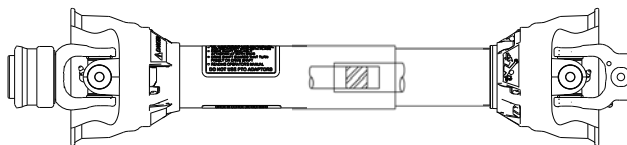
DO NOT OPERATE WITHOUT-

- ALL DRIVE SHAFT GUARDS, TRACTOR AND EQUIPMENT SHIELDS IN PLACE
- DRIVE SHAFT SECURELY ATTACHED AT BOTH ENDS
- DRIVE SHAFT GUARDS THAT TURN FREELY ON DRIVE SHAFT
- READ OPERATOR'S MANUAL

DO NOT USE PTO ADAPTORS

PART NO. 13-10021
Location: Driveline guard

PART NO. 13-10022
Location: Driveline tube, under guard



End Yokes Properly Aligned

CAUTION

Failure to properly align end yokes may result in excessive vibration. Always be sure driveline guards are in place and rotate freely.