

 **DANUSER**<sup>®</sup>  
Agricultural and Industrial Attachments

**MEGAMIXER**  
MATERIAL HANDLING BUCKET



**FROM THE FARM...  
...TO THE JOBSITE**



Made in the U.S.A.

*"Good enough won't do - it must be right." - K.B. Danuser, Founder 1910*

 **GENERAL  
IMPLEMENT**  
DISTRIBUTORS

[danuser.com](http://danuser.com)



# MEGAMIXER

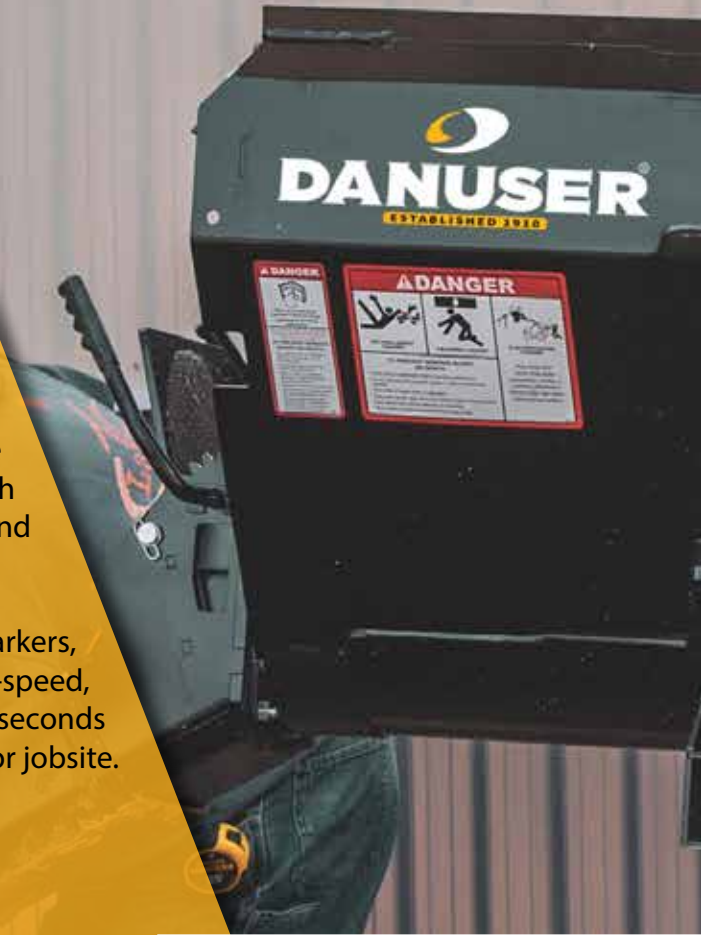
## 1-Year Warranty

Eliminate backbreaking labor with the Danuser Mega Mixer! From concrete to livestock feed, mix, scoop, and dispense a wide variety of materials with ease.

With adjustable mounting brackets, conveniently dispense left or right. Built-in cutting edges and a robust design make it well-suited for scooping from piles. Comes standard with dual safety grates, including integrated bag busters, that can be opened individually from either side.

The Mega Mixer includes two 2' multi-link chutes that store conveniently on the bucket. Additional chutes are available with chain mounting holes for stronger support. A closable discharge end limits spilling and allows for faster material mixing.

With features like chute storage, pin holders, easy-to-read yardage markers, a robust 8" diameter auger coupled directly to a heavy-duty, low-speed, high-torque motor capable of dispensing 3/4 yard of material in 26 seconds (up to 1" diameter rock), the Mega Mixer will save time on the farm or jobsite. Unit ships complete, including hoses and flat face ISO couplers.



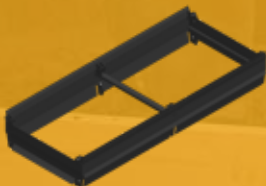
## MATERIAL HANDLING

Concrete (1" Slump)	Dry Topsoil
Mortar	Sand
Grout	Livestock Feed
Asphalt	Sawdust
1" Clean	Compost
1" Rock	Manure

## MIX | SCOOP | DISPENSE

## ACCESSORIES

HOPPER EXTENSION  
(PN 170095)



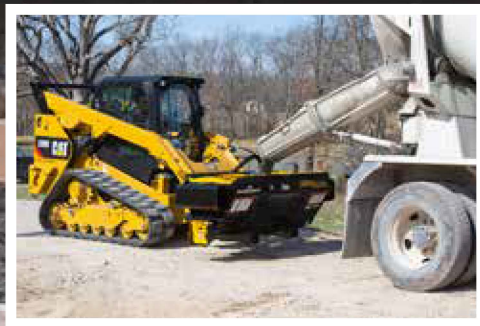
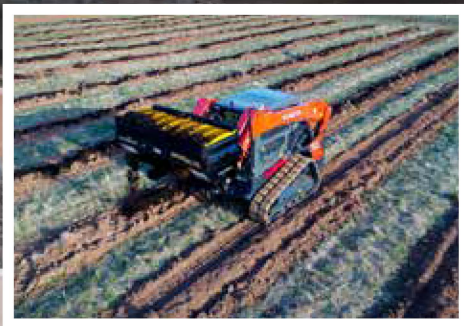
FUNNEL w/ 6" HOSE ADAPTER  
(PN 170110)



MEGA MIXER CHUTES  
24" (PN 180700) & 36" (PN 180701)









# INNOVATIVE DESIGN

**Integrated cutting edges make scooping from piles easier**

**Heavy-duty, low-speed, high-torque motor connected directly to the auger**

**Mounts on either side to dispense left or right**

**Integrated fork pockets for use on a variety of vehicles**

**3/4 yard capacity (up to 1 yard with optional hopper extension)**

**Convenient chute storage**

**Bearing-supported auger adds strength and reduces wear**

**Lockable discharge end limits spilling and allows for faster material mixing**

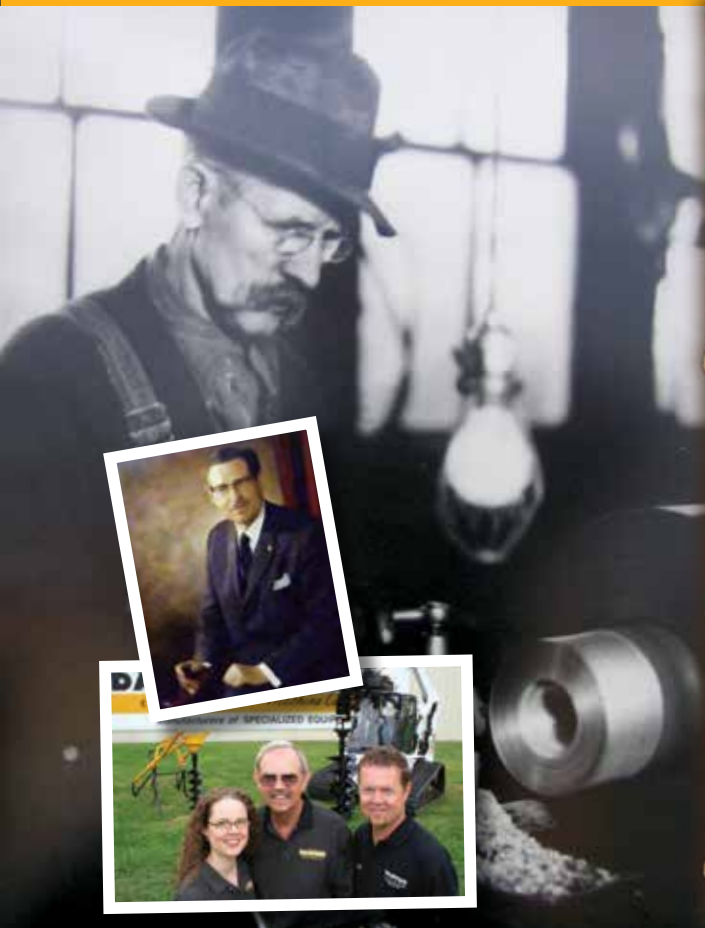
**Auger**

**Yardage markers**

**All-Steel (\$75)**

**MOUNTING OPTIONS**

- Skid-Steer Quick Attach
- Telehandler
- Pallet Forks



## A HISTORY OF INNOVATION

Established in 1910, DANUSER has been family owned and operated by four generations. We have manufactured auger systems since the mid-1940's. With decades of design and manufacturing experience, our machines have stood the test of time. Today our commitment to our customer remains to design and build products that are the benchmark of quality, reliability, and longevity. In the words of our founder K.B. Danuser, "Good enough won't do – it must be right."

DANUSER manufactures several attachments for various equipment, serving several industries worldwide. Please visit [www.danuser.com](http://www.danuser.com) to see our full line of attachments.

Danuser reserves the right to make changes in design, specifications, and prices without notice and without incurring any obligation relating to such changes.



Visit [danuser.com](http://danuser.com) for more Danuser attachments.



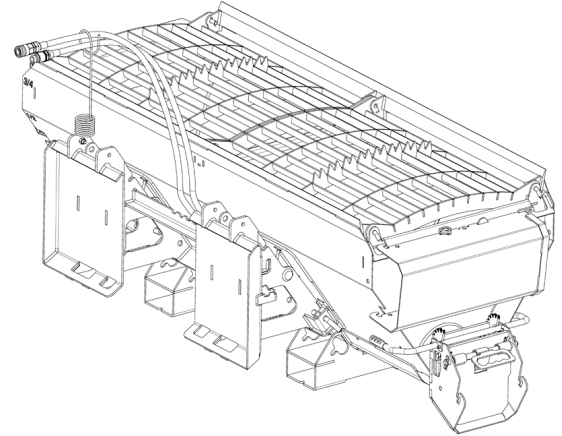


## MEGA MIXER PRICE SHEET

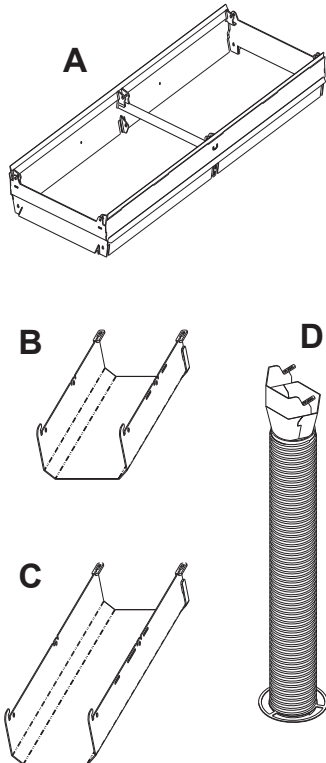
### 1-Year Warranty

**⚠ WARNING** This product can expose you to chemicals known to the State of California to cause cancer and birth defects or other reproductive harm. For more information go to [www.P65Warnings.ca.gov/product](http://www.P65Warnings.ca.gov/product).

PN	DESCRIPTION	WT.	PRICE
170001	<b>Mega Mixer S75</b> Includes two 24" chutes, hoses with flat face ISO couplers, built-in scraper blades, handle-operated automatic discharge flap, and safety grates with bag busters.	898	\$6,925.00



### MEGA MIXER ACCESSORIES



REF.	PN	DESCRIPTION	WT.	PRICE
A	170095	<b>Hopper Extension</b> Expands Mega Mixer capacity from 3/4 yard to 1 yard without modification. <b>Includes</b> hardware. No tools required.	121	\$645.00
--	170100	<b>24" Chute (SN 1280 &amp; below)</b> 2' chutes can be linked to extend.	15	\$64.00
--	170103	<b>36" Chute (SN 1280 &amp; below)</b> 3' chutes can be linked to extend.	22	\$77.00
B	180700	<b>24" Chute (SN 1281 &amp; above)</b> 2' chutes can be linked to extend.	18	\$64.00
C	180701	<b>36" Chute (SN 1281 &amp; above)</b> 3' chutes can be linked to extend.	25	\$77.00
D	170110	<b>Funnel with 6" Hose Adapter</b> May be combined with 24" or 36" chute. Allows precision discharge with included 5' long, 6" diameter hose.	24	\$532.00

### REPAIR PARTS & SAFETY SIGNS

To find repair parts and safety signs, see Danuser's online Parts Catalog at [parts.danuser.com](http://parts.danuser.com).

The Parts Catalog includes all current attachment parts and decals in a user-friendly, accessible, and portable format.

Be sure to have model and serial number at hand to find the correct items.

