

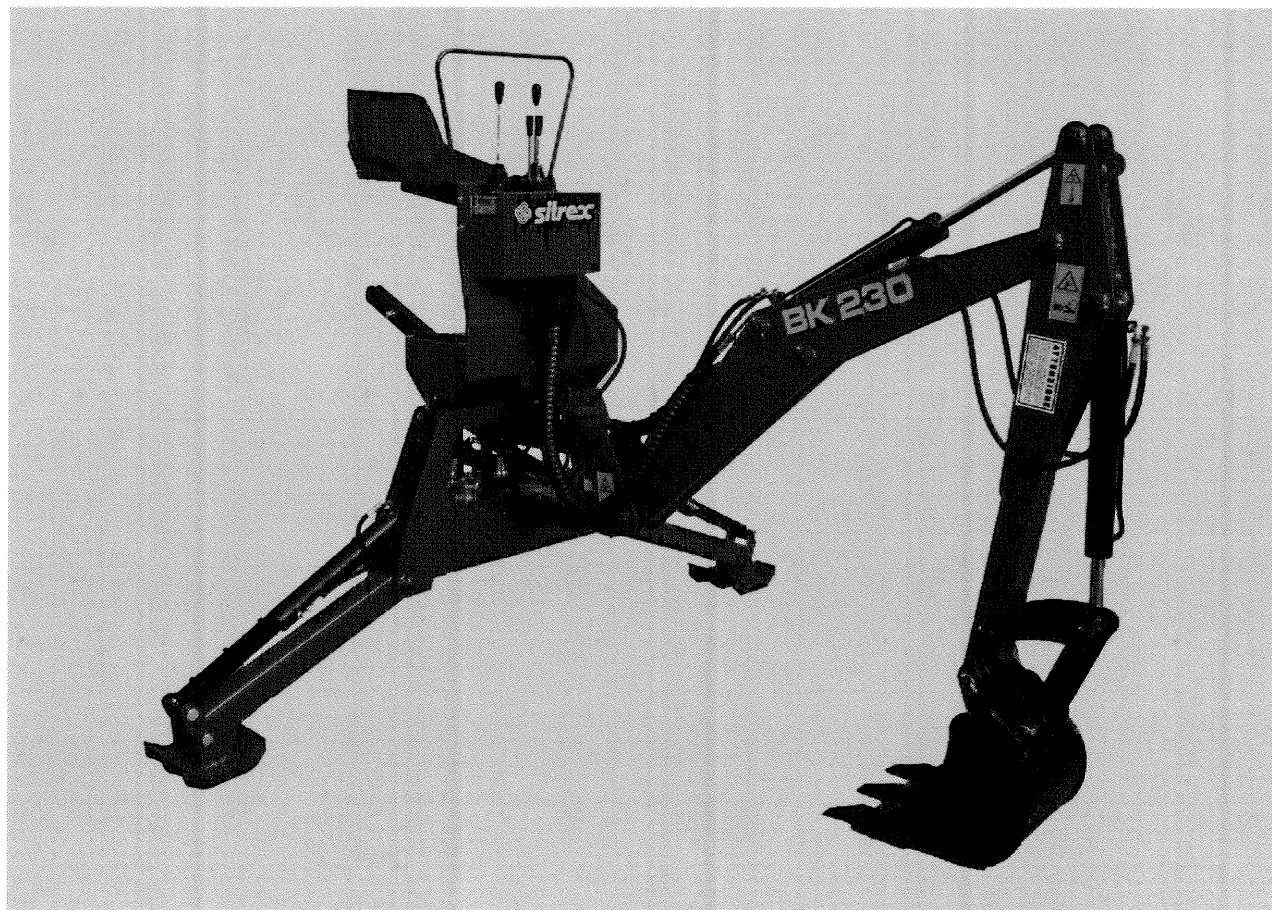
AGRICULTURAL MACHINERY

sitrex®
Spa

BACK-HOE

Series BK

SPARES
issue 0 – 02/06



USING THE ORIGINAL SPARE

THE ASSEMBLY IS MORE SIMPLE
 A GREATER LIFE IS GUARANTEED
 A GOOD SAVING IS ASSURED

In order to obtain an effective service, for the replacement of the worn or failed parts, it is necessary that the spare request contain the following data:

- serial number and model of the machine that it need of spare part;
- number of the figure (exploded view that contain the required part) and item number. Each item is numbered progressively in clockwise, from left to right and from top to bottom;
- code number or technical data of required part (see the part list);
- quantity of required parts;
- Customer code (only if it is exist).

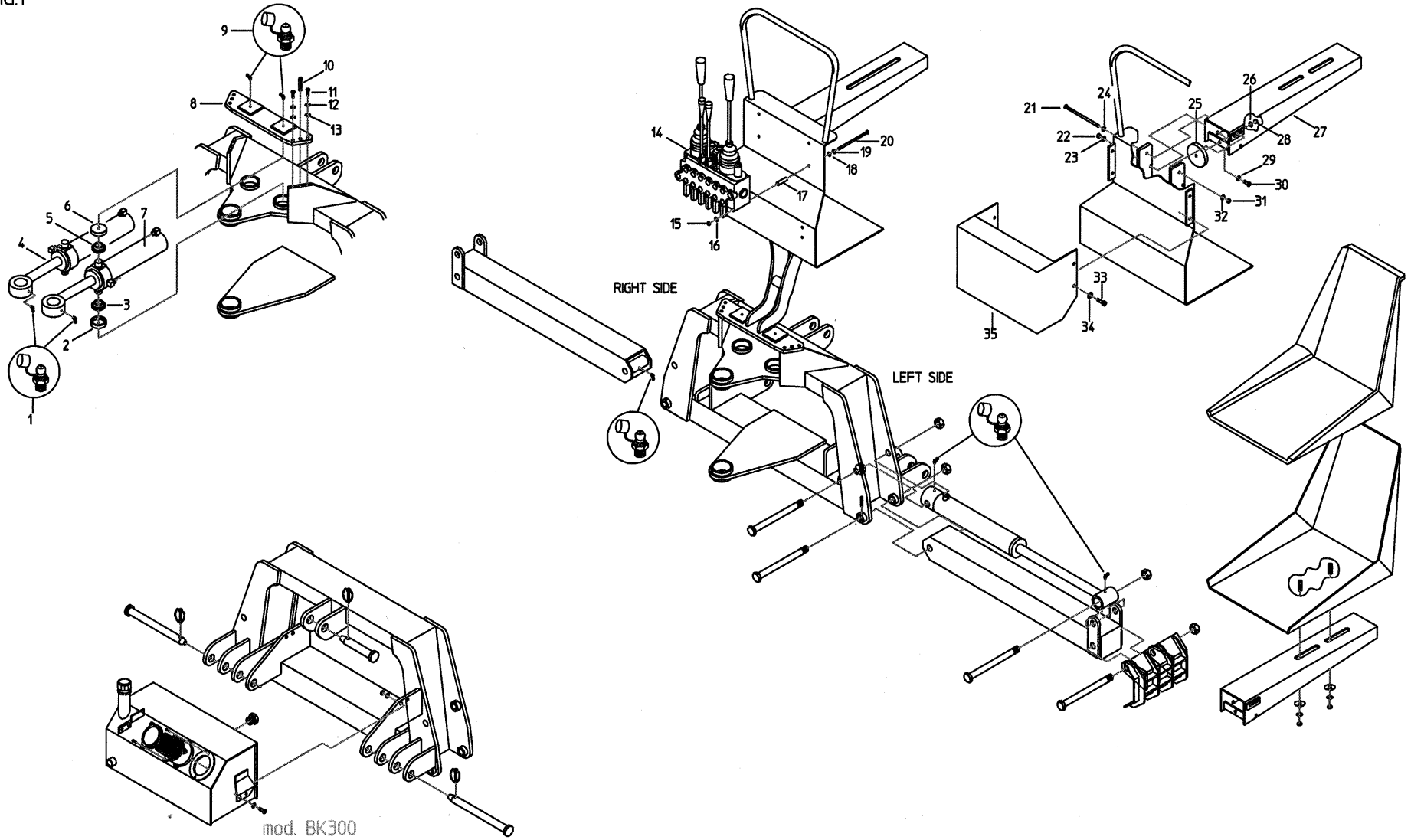
- CHASSIS (fig.1A – BK 300)		
Part list.....	page	4
Exploded view.....	"	5
Part list (continuation).....	"	6
Exploded view.....	"	7
- CHASSIS (fig.1B – BK 200/230)		
Part list.....	"	8
Exploded view.....	"	9
- ROTATING GROUP / ARMS / BUCKET (fig.2A – BK 300)		
Part list.....	"	10
Exploded view.....	"	11
Part list (continuation).....	"	12
Exploded view.....	"	13
- ROTATING GROUP / ARMS / BUCKET (fig.2B – BK 200/230)		
Part list.....	"	14
Exploded view.....	"	15
- HYDRAULIC CIRCUIT (fig.3A - BK 200/230)		
Part list.....	"	16
Exploded view.....	"	17
- HYDRAULIC CIRCUIT (fig.3B – BK 300)		
Part list.....	"	18
Exploded view.....	"	19
- HYDRAULIC CIRCUIT (fig.4)		
Part list.....	"	20
Exploded view.....	"	21
- ADDITIONAL TIE RODS OR CHAINS (fig.5)		
Part list.....	"	22
Exploded view.....	"	23

PART LIST - CHASSIS – Fig.1A (1/2)

Item	Description	BK200		BK230		BK300			
		Technic. data	Q.ty	Technic. data	Q.ty	Technic. data	Q.ty		
1	Grease nipple					8 MA right	1		
2	Sferic support					700518	2*		
3	Sferic joint					GE30ES	2*		
4	Right jack (rotating)					702500 R	1		
5	Sferic support					700516	2*		
6	Left jack (rotating)					702500 L	1		
7	Sferic joint					GE30ES	2*		
8	Jack locking support					701107	1		
9	Grease nipple					8 MA right	1		
10	Elastic pin					12x60	2*		
11	Screw					12x40	4*		
12	Washer (grover)					12	4*		
13	Washer					12	4*		
14	Distributor		1		1		1		
15	Nut	8	3*	8	3*	-			
16	Washer	8	3*	8	3*	-			
17	Spacer	12x36	3*	12x36	3*	12x36	4*		
18	Washer	8	3*	8	3*	8	4*		
19	Washer (grover)					8	4*		
20	Screw T.B.	8x100	3*	8x100	3*	8x35	4*		
21	Hexagonal-head bolt	12x160	1	12x160	1	12x160	1		
22	Nut	10	1	10	1	10	1		
23	Washer	10	1	10	1	10	1		
24	Washer	12	1	12	1	12	1		
25	Rubber support with screw		1		1		1		
26	Washer	12	1	12	1	12	1		
27	Seat attachment support	600200	1	600200	1	600200	1		
28	Nut	12	1	12	1	12	1		
29	Washer	10	1	10	1	10	1		
30	Screw	10x40	1	10x40	1	10x40	1		
31	Nut	12 MA	1	12 MA	1	12 MA	1		
32	Washer	12	1	12	1	12	1		
33	Hexagonal-head bolt	8x16	4*	8x16	4*	8x16	4*		
34	Washer	8	4*	8	4*	8	4*		
35	Carter	TIF 001	1	TIF 001	1	TIF 001	1		

*= total number

FIG.1



continuation fig.1A

Item	Description	BK200		BK230		BK300			
		Technic. data	Q.ty	Technic. data	Q.ty	Technic. data	Q.ty		
36	Chassis					700800	1		
37	Elastic pin					10x50	2*		
38	Jack						2*		
39	Seat with support					606000	1		
40	Self-locking nut					22 MA low	2*		
41	Self-locking nut					22 MA low	2*		
42	Washer					16	2*		
43	Washer					12	2*		
44	Self-locking nut					12	2*		
45	Articulated foot						2*		
46	Screw					22x110 MA	2*		
47	Screw					22x110 MA	2*		
48	Telescopic leg						2*		
49	Grease nipple					8 MA right	1		
50	Holed pin (1hole)						2*		
51	Holed pin (1hole)						2*		
52	Pin (attachment 2nd cat.)						2*		
53	Safety pin					10	2*		
54	Washer					10	4*		
55	Safety pin					10	1		
56	Pin (3° point attachment)					602016	1		
57	Nut					10	4*		
58	Oil level plug					¾ gas	1		
59	Washer					10	4*		
60	Screw					10x30	4*		
61	Filtering box					704500	1		
62	Washer					8	2*		
63	Screw					8x20	2*		
64	Filtering box cover						1		
65	Filter						1		
66	Screw					6x15	3*		
67	Oil level plug						1		
68	Pin (attachment 2nd cat.)						2*		
69	Safety pin					10	2*		

*= total number

FIG.1

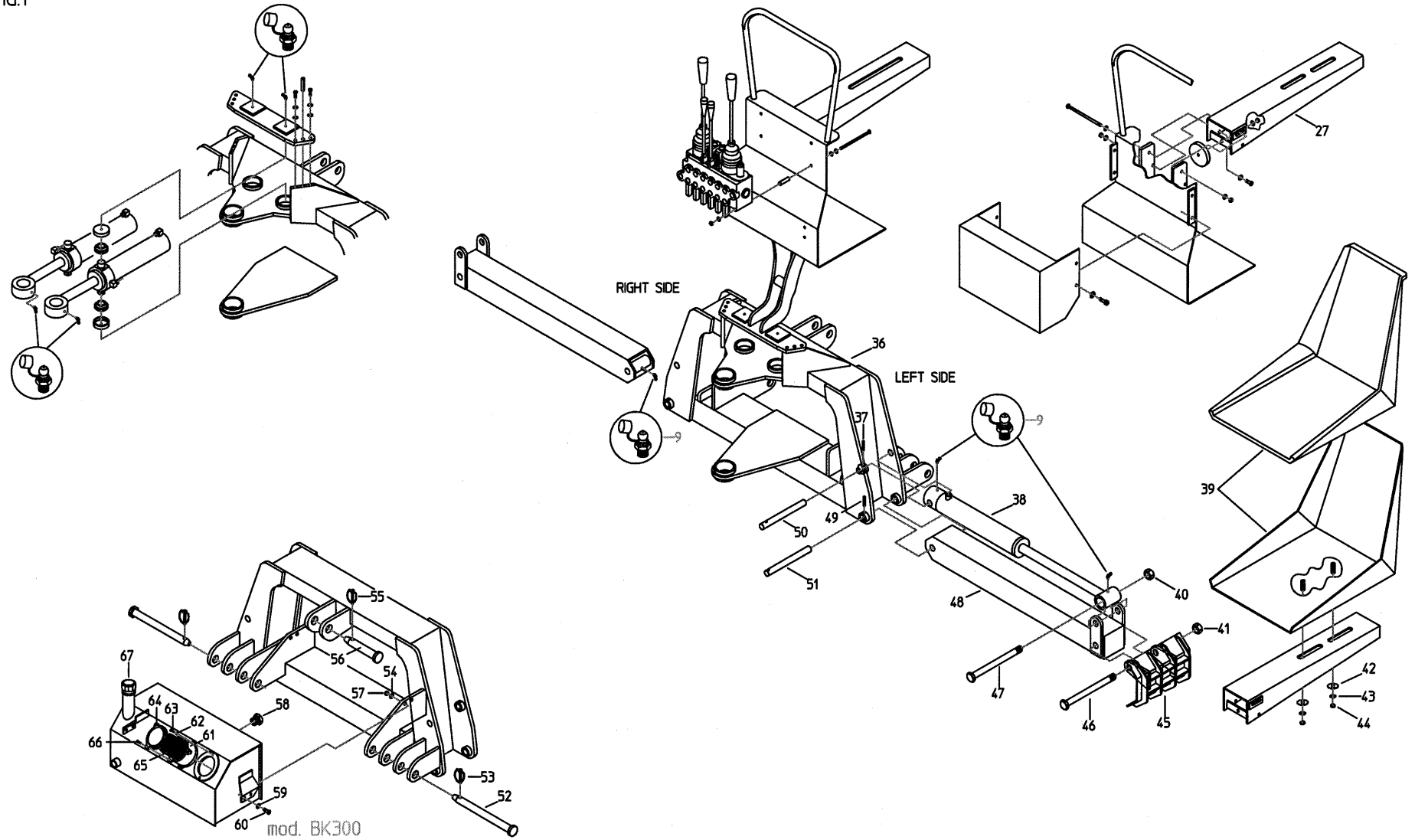
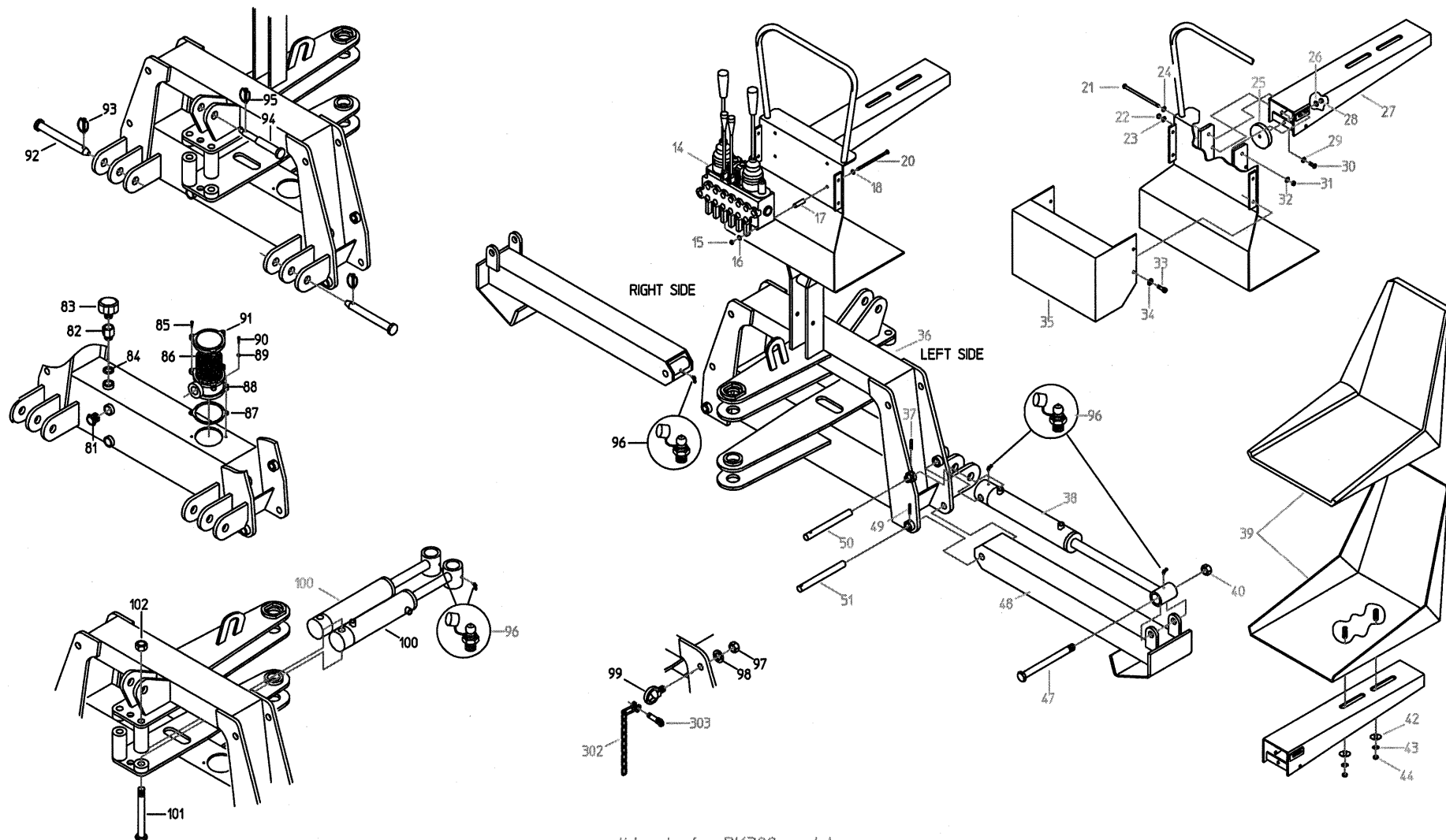


FIG.1B



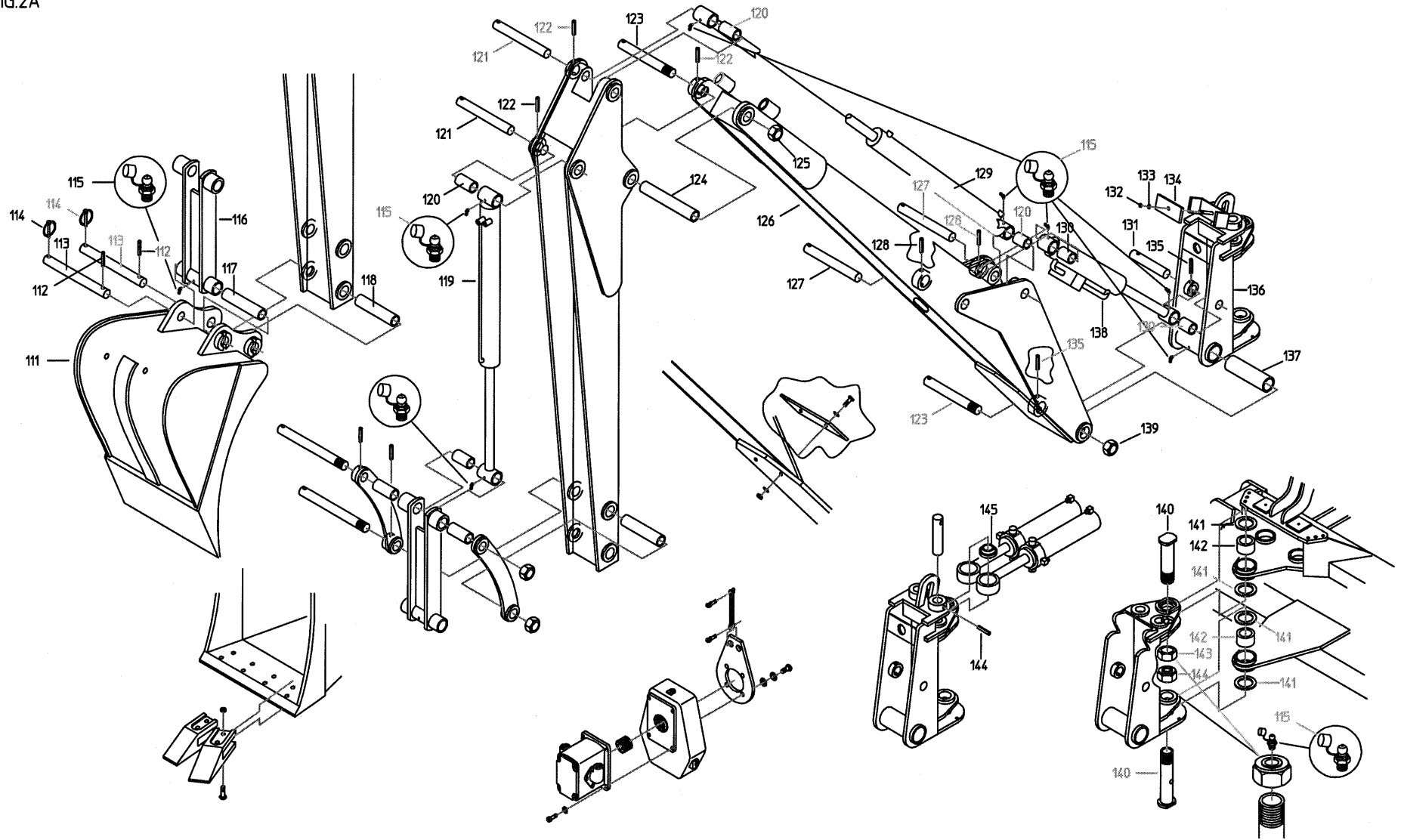
valid only for BK300 models

PART LIST - ROTATING GROUP – ARMS - BUCKET – Fig.2A (1/2)

Item	Description	BK200		BK230		BK300		Technic. data	Q.ty
		Technic. data	Q.ty	Technic. data	Q.ty	Technic. data	Q.ty		
111	Bucket	601900	1	601900	1	701900	1		
112	Elastic pin	10x50	2*	10x50	2*	12x60	2*		
113	Holed pin (2 holes)	602009	2*	602009	2*	702010	2*		
114	Safety pin	10	2*	10	2*	10	2*		
115	Grease nipple	8 right	1	8 right	1	8 right	1		
116	Central connecting rod	500900	1	500900	1	700900	1		
117	Bushing	3525123	1	3525123	1	4030123	1		
118	Bushing	3525123	1	3525123	1	4030123	1		
119	Jack (bucket)	181300	1	181300	1	801300	1		
120	Bushing	302260	2*	302260	2*	403095	2*		
121	Holed pin	182003	2*	182003	2*	702006	2*		
122	Elastic pin	8x50	2*	8x50	2*	12x60	2*		
123	Threaded pin	222001	1	222001	1	702011	1		
124	Bushing	3525102	1	3525102	1	4030168	1		
125	Self-locking nut	24MB low	1	24MB low	1	27MB low	1		
126	First arm	180400	1	220400	1	800400	1		
127	Holed pin		2*		2*	702008	2*		
128	Elastic pin	8x50	2*	8x50	2*	12x60	2*		
129	Jack (second arm)	181200	1	221200	1	801200	1		
130	Bushing					352560	2*		
131	Holed pin (1hole)					702007	1		
132	Self-locking nut					8 MA	1		
133	Washer					8	1		
134	Locking plate						1		
135	Elastic pin					12x60	2*		
136	Rotating group					700500	1		
137	Bushing					3525123	1		
138	Jack (first arm)	181800	1	221800	1	801800	1		
139	Self-locking nut					27MB low	1		
140	Threaded and holed pin	602017	2*	602017	2*	702013	2*		
141	Washer (teflon)	36	4*	36	4*	41	4*		
142	Bushing					xxxxxxx	2*		
143	Self-locking nut	30MB low	2*	30MB low	2*	39MB low	2*		
144	Elastic pin					12x60	2*		
145	Sferic joint					GE30ES	2*		

*= total number

FIG.2A



continuation fig.2A

Item	Description	BK200		BK230		BK300		Technic. data	Q.ty
		Technic. data	Q.ty	Technic. data	Q.ty	Technic. data	Q.ty		
146	Holed pin					702009	2*		
147	Screw					8x50	2*		
148	Washer					8	2*		
149	Locking plate						1		
150	Second arm	180100	1	220100	1	800100	1		
151	Bushing	3525123	1	3525123	1	3525123	1		
152						8 M	2*		
153						8	2*		
154	Chain		1		1		1		
155	Plate	502000	1	502000	1	502000	1		
156	Screw	10x25	4*	10x25	4*	10x25	4*		
157	Washer (grover)	10	4*	10	4*	10	4*		
158	Washer	10	4*	10	4*	10	4*		
159	Multiplier	504200	1	504200	1	504200	1		
160	Washer	8	4*	8	4*	8	4*		
161	Screw T.B.	8x30	4*	8x30	4*	8x30	4*		
162	Hydraulic pump	504100	1	504100	1	804100	1		
163	Gear	BF 2	1	BF 2	1	BF 2	1		
164	Locking screw	8	2*	8	2*	8	2*		
165	Self-locking nut	24MB high	2*	24MB high	2*	27MB low	2*		
166	Right connecting rod	502400	1	502400	1	702400	1		
167	Bushing	352530	1	352530	1	352530	1		
168	Bushing	352560	1	352560	1	352560	1		
169	Grease nipple	8 right	1	8 right	1	8 right	1		
170	Elastic pin	10x50	2*	10x50	2*	12x60	2*		
171	Threaded pin	602011	2*	602011	2*	702012	2*		
172	Left connecting rod	501000	1	501000	1	701000	1		
173	Screw	12x45	2*	12x45	2*	12x45	2*		
174	Self-locking nut	12	2*	12	2*	12	2*		
175	Tooth	705100	1	705100	1	705100	1		

*= total number

FIG.2A

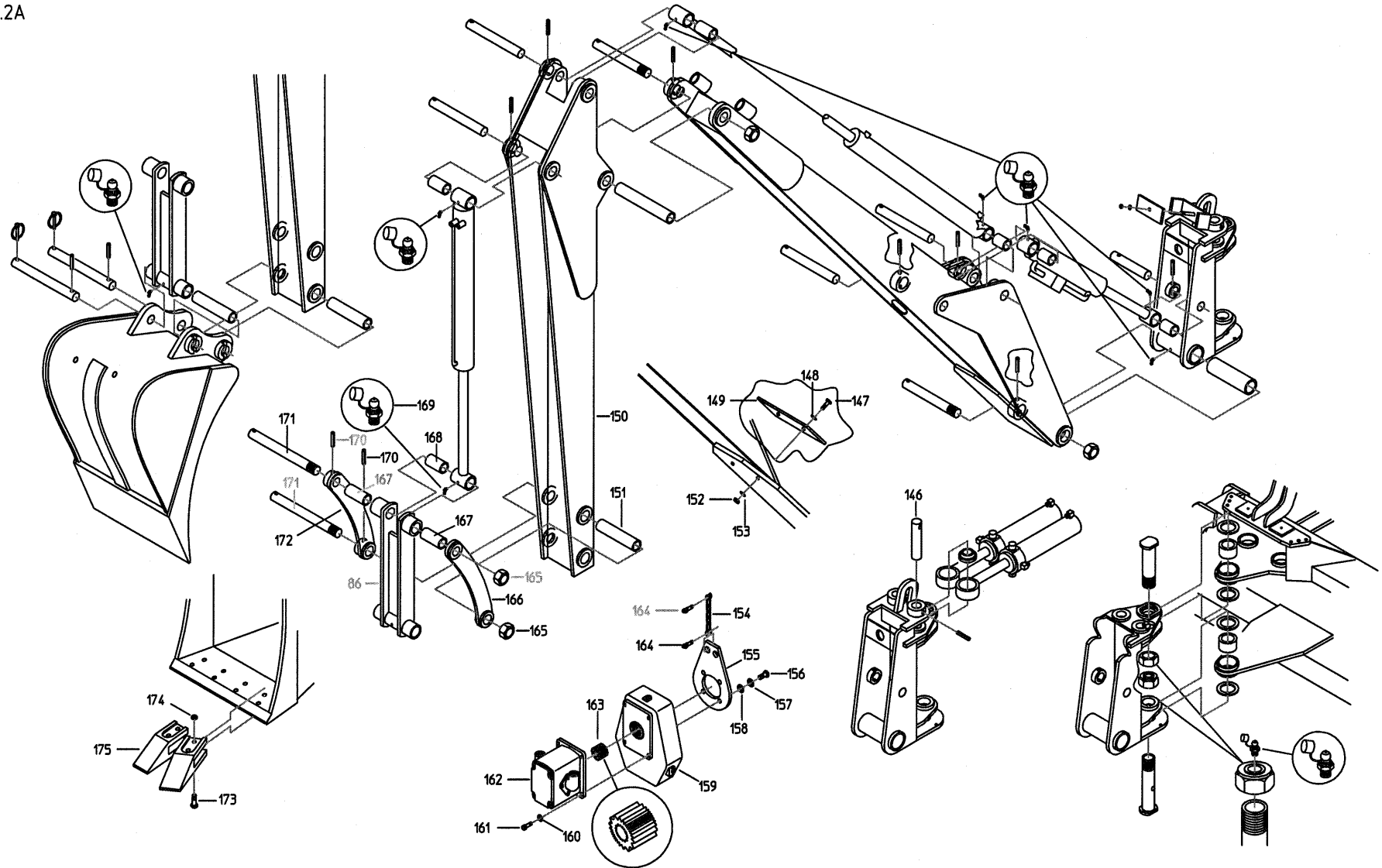
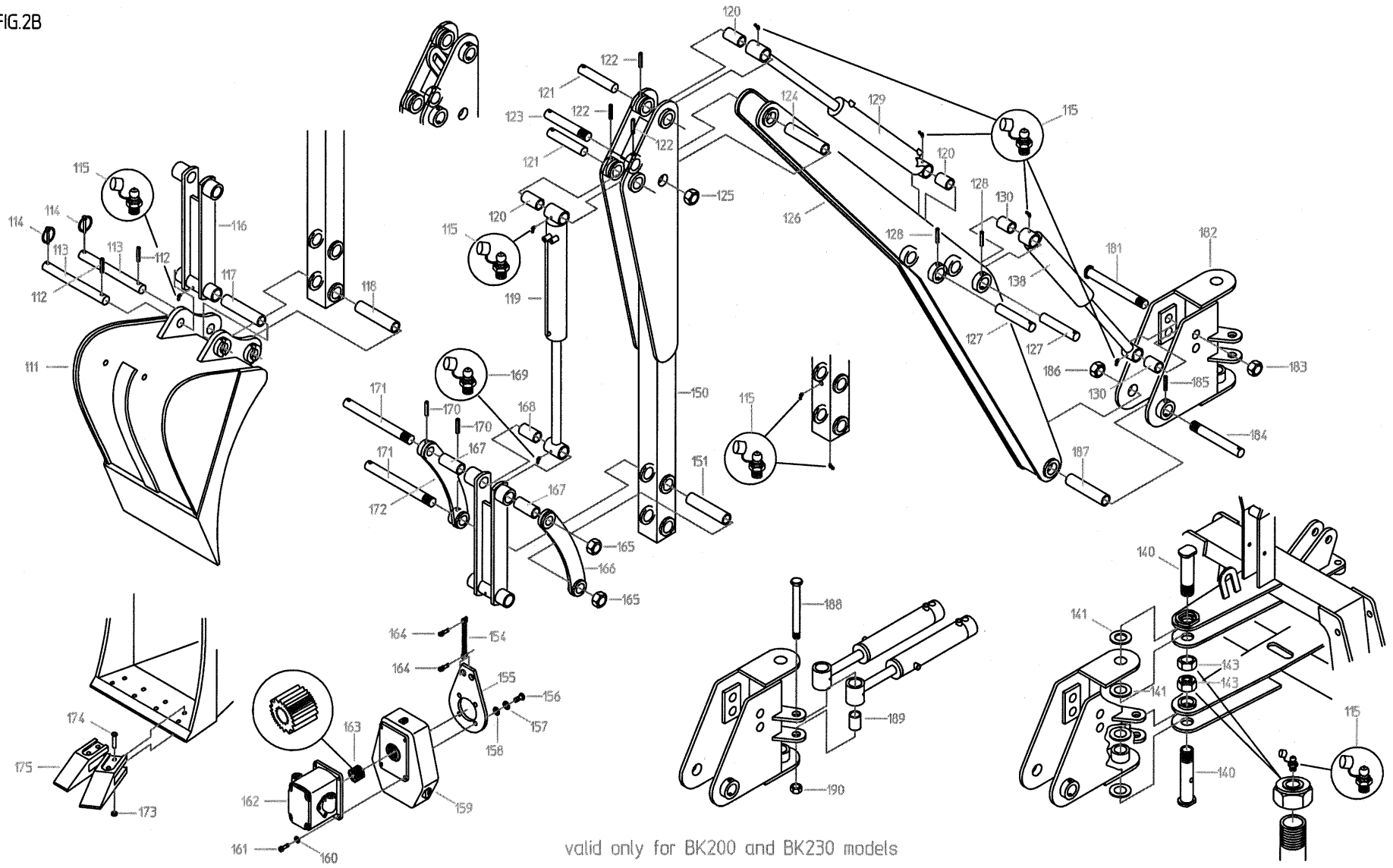


FIG.2B



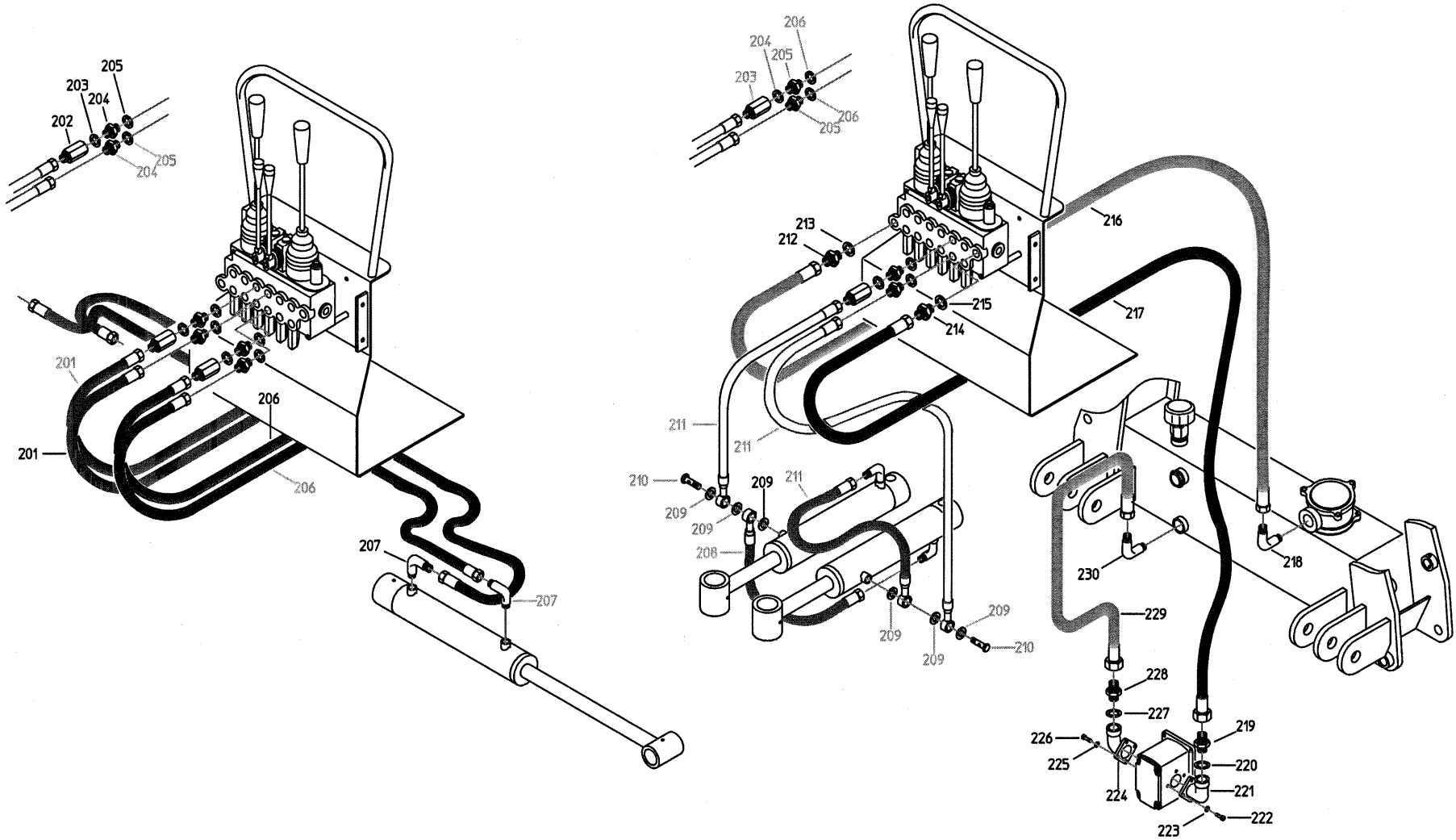
valid only for BK200 and BK230 models

PART LIST - HYDRAULIC CIRCUIT – Fig.3A

Item	Description	BK200		BK230		BK300		Technic. data	Q.ty
		Technic. data	Q.ty	Technic. data	Q.ty	Technic. data	Q.ty		
201	Flexible piping		2*		2*				
202	Flexible piping		2*		2*				
203	Pipe-fitting (extension)	¼ MF	2*	¼ MF	2*	¼ MF	2*		
204	Washer	¼	-	¼	-	¼	-		
205	Pipe-fitting	½ ¼	-	½ ¼	-	½ ¼	-		
206	Washer	½	-	½	-				
207	Pipe-fitting (90°)	¼ MM	2*	¼ MM	2*				
208	Flexible piping		2*		2*				
209	Washer		6*		6*				
210	Holed bolt		2*		2*				
211	Flexible piping		2*		2*				
212	Pipe-fitting	½ ½ MM	1	½ ½ MM	1				
213	Washer	½	1	½	1				
214	Pipe-fitting	½ 3/8 MM	1	½ 3/8 MM	1				
215	Washer	½	1	½	1				
216	Flexible piping		1		1				
217	Flexible piping		1		1				
218	Pipe-fitting (90°)	½ MM	1	½ MM	1				
219	Pipe-fitting	½ 3/8	1	½ 3/8	1	½ 3/8	1		
220	Washer	½	1	½	1	½	1		
221	Connector	GP 30 ½	1	GP 30 ½	1	GP 30 ½	1		
222	Screw T.B.	6x25	3*	6x25	3*	6x25	3*		
223	Washer	6	3*	6	3*	6	3*		
224	Connector	GP 40 ¾	1	GP 40 ¾	1	GP 40 ¾	1		
225	Washer	8	3*	8	3*	8	3*		
226	Screw T.B.	8x25	3*	8x25	3*	8x25	3*		
227	Washer	¾	-	¾	-	¾	-		
228	Pipe-fitting	¾ ¾ MM	1	¾ ¾ MM	1	¾ ¾ MM	1		
229	Flexible piping		1		1				
230	Pipe-fitting (90°)	¾ ¾ MM	1	¾ ¾ MM	1				

*= total number

FIG.3A



valid only for BK200 and BK230 models

FIG.3B

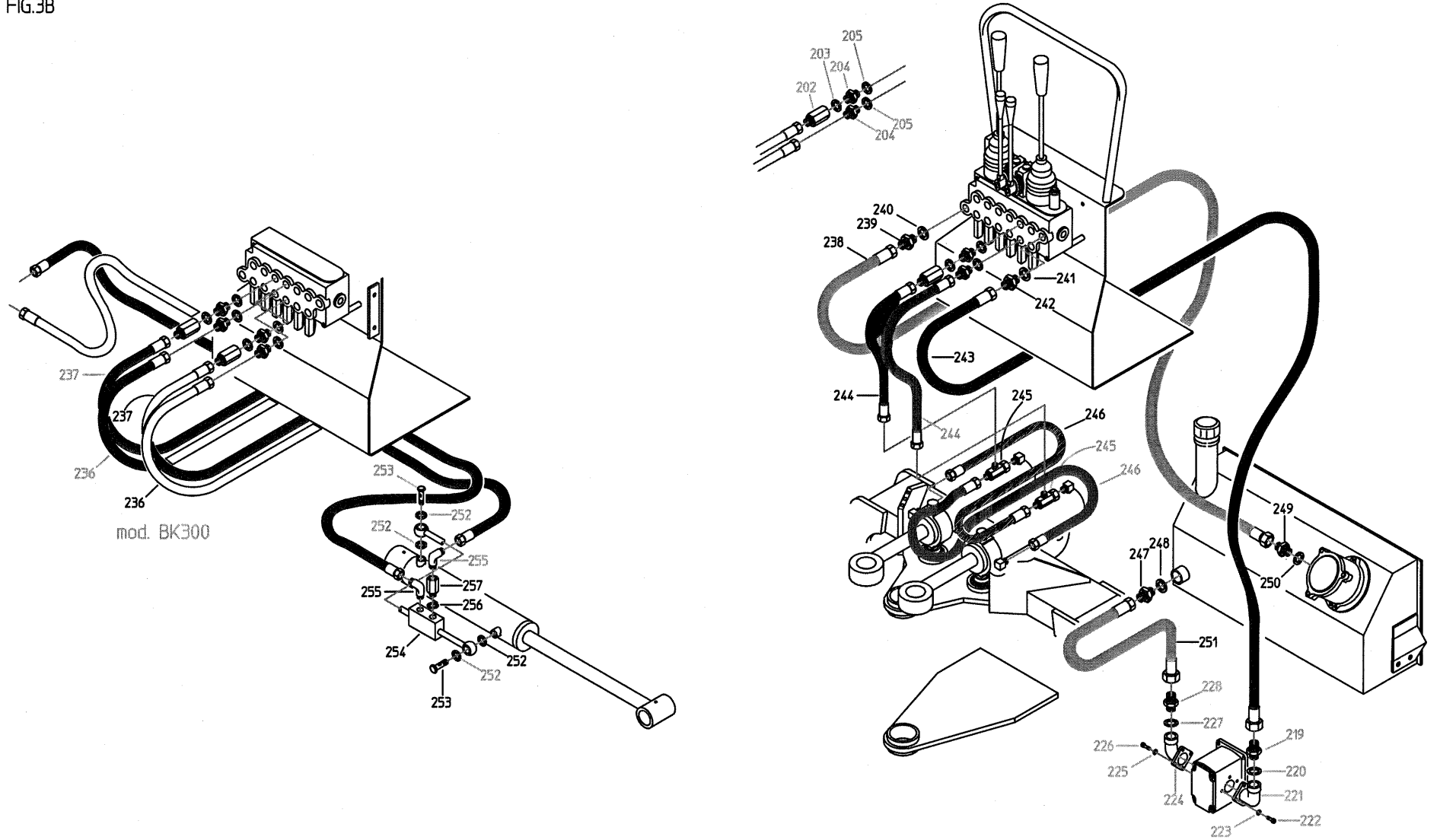


FIG.4

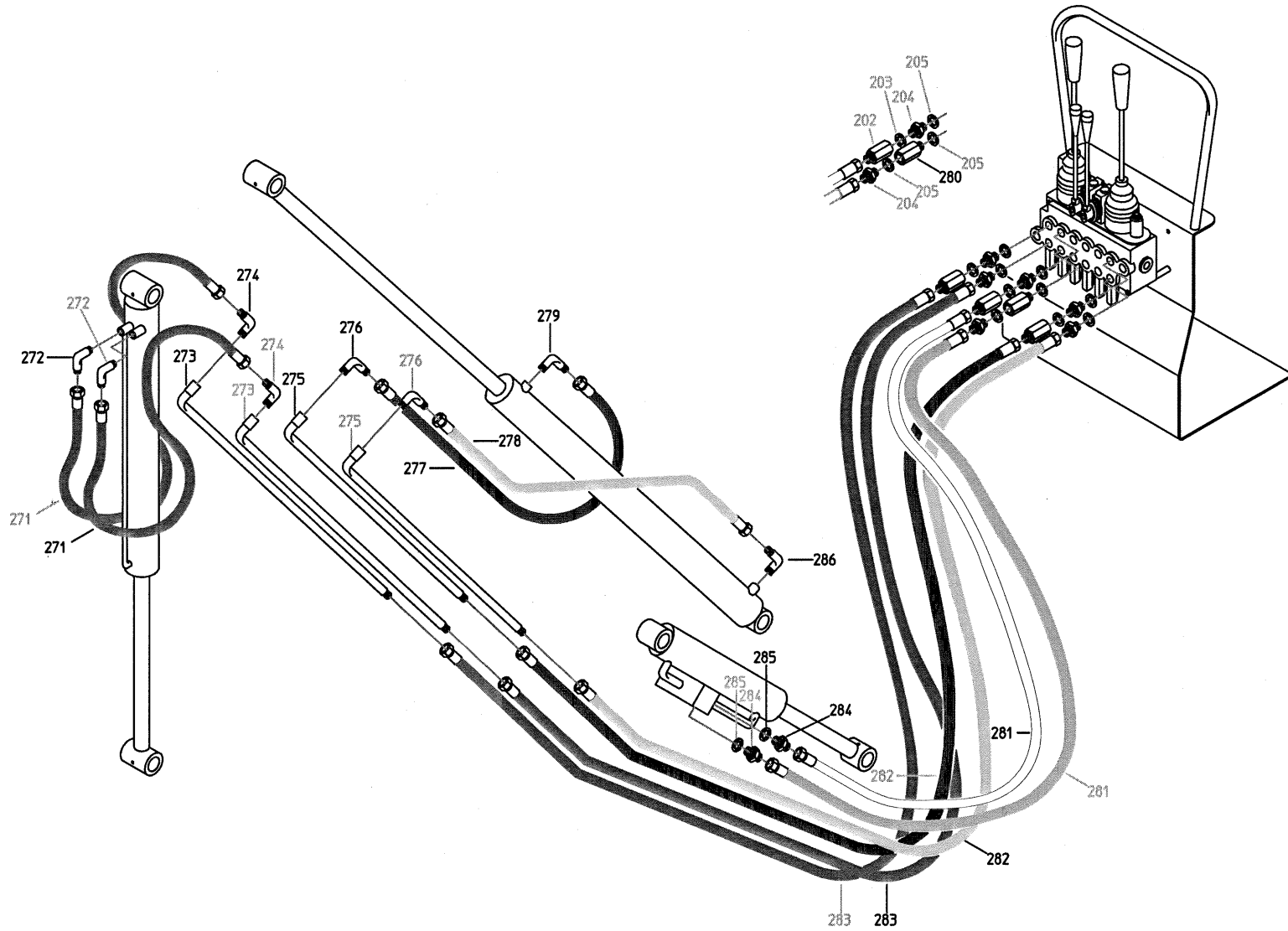
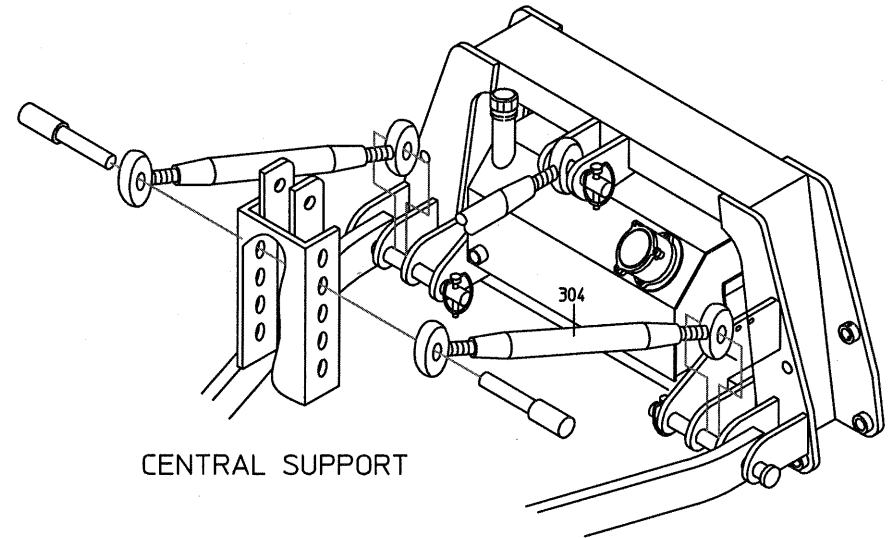
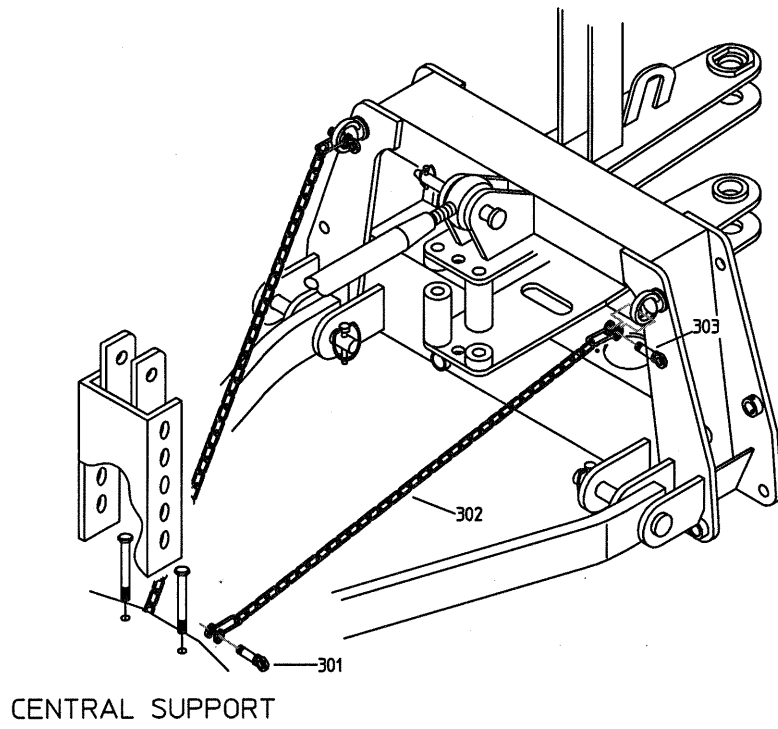
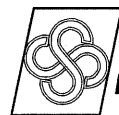


FIG.5





AGRICULTURAL MACHINERY
sitrex® Spa

Zona Industriale-Viale Grecia, 8
06018 TRESTINA-(Perugia)-ITALY
Tel. +39.075.8540021-Telefax +39.075.8540523
e-mail: sitrex@sitrex.it www.sitrex.com

