

# ATHENS

## MODEL 52



"WE PLOW THE EARTH"

*The Athens Model 52 is the perfect choice for compact tractor owners, gardeners, weekenders, and small wildlife food plots. This lift-type tandem disc harrow is available in 6' 6", 7' 0", 7' 11", and 8' 2" widths and its compact design allows for easy lifting, straight pulling, and excellent maneuverability.*





## MODEL 52 SPECIFICATIONS

WIDTH OF CUT	NUMBER OF DISCS	DISC SPACING		NUMBER OF BEARINGS	*APPROX HP	APPROX WEIGHT (lbs.)
		FRONT	REAR			
6' 6"	16	9"	9"	8	35 - 40	868
7' 0"	18 20	9" 7 1/2"	7 1/2" 7 1/2"	8	40 - 45	938
7' 11"	20	9"	9"	8	45 - 50	982
8' 2"	22 24	9" 7 1/2"	7 1/2" 7 1/2"	8	45 - 55	1021

\*Approximate Horse Power (HP) is only a guide. Extremely hard, soft, or boggy conditions will change these figures.

### STANDARD EQUIPMENT

- Disc Blades, 18" or 20" Diameter
- Relube Quadriseal Ball Bearings
- 1 1/8" Square Cold Rolled Axle
- Spacing, 9", 7 1/2", or 9" Front & 7 1/2" Rear
- Adjustable Angle of Cut: 15° or 18°
- Gang Wrench
- Cat. I Hitch Free Link

### OPTIONAL EQUIPMENT

- Scrapers
- Cover Discs
- Cat. II Hitch Free Link

### DISC BLADES

Available in 18" and 20" diameter sizes. Choose between Smooth or Cutout. Smooth Blades are best utilized in normal field conditions. They are more economical, last longer, weigh more, and wear more evenly, thus staying sharper longer. Cutout blades are more aggressive and trap residue better than smooth blades.



### FEATURES

**The Main Frame** is constructed of 1/4" thick steel tubing and 1/2" thick angle which is truss-braced and reinforced to resist twisting and bending. Compact design allows for easy lifting, straight pulling, and excellent maneuverability in small fields and around close obstacles.

**Axles** are made from 1 1/8" square cold rolled steel to insure straightness and to keep bearings and disc in alignment.

**Gang Frames** are constructed from 3 x 3 x 1/4" structural steel tubing.

**Flangette Ball Bearings** on the 52 are greaseable and have triple lip seals.

**Angle of Cut** adjustments can be made from 15° to 18° depending on your need for penetration and aggression.



Athens Plow Co., Inc. guarantees each piece of equipment against defective materials and workmanship for a period of one year from the date of delivery to the purchaser unless otherwise specified. Athens Plow Co., Inc. reserves the right to make changes and/or improvements in design and construction of parts or machines without notice or obligation.



# ATHENS

## MODEL 55 MOUNTED DISK HARROW

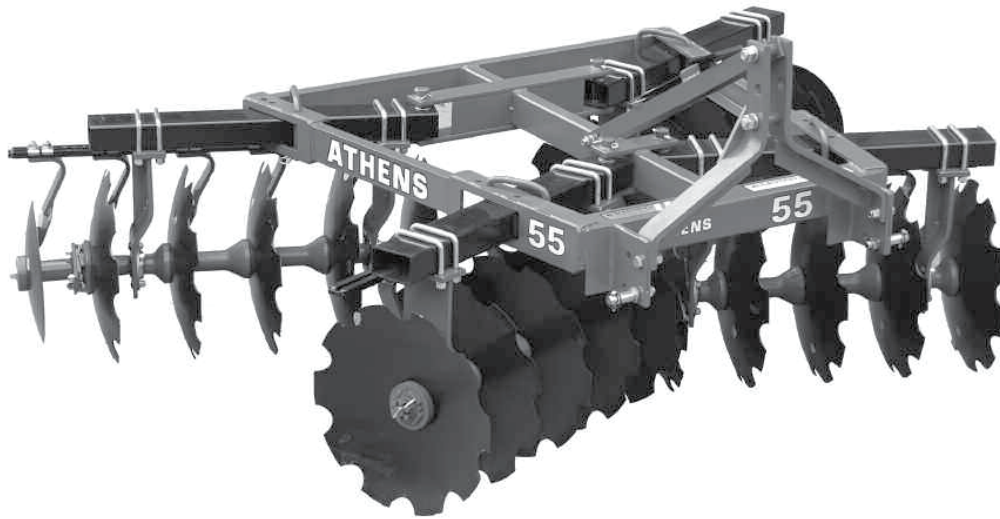


When it comes to rugged dependability and unsurpassed field performance, the Athens "55" is tops in its class!

This brawny, fully-mounted tandem has the weight (average 55# per disk) and strength to chop through stalks and stubble with ease...Plus quick and easy adjustments to provide excellent incorporation and seedbed finishing.



# 55 MOUNTED DISK HARROWS



## SPECIFICATIONS

Width of Cut	No. of Disks *	Approx. Weight
6' 6"	16	1104
7' 0"	18/20*	1188
7' 11"	20	1242
8' 2"	22/24*	1321
9' 4"	24/26/28*	1456

\* Number of disks vary with the combination of spacing 7½", 9", or 9" front and 7½" rear.

### STANDARD EQUIPMENT:

- Category II Hitch
- 1 ½" Cold Rolled Square Steel Axle
- Disk Gang Wrench
- Tapered Outside Rear Disk Gangs
- Adjustable Angle of Cut
- Flangette Bearing Hangers
- Relube Ball Bearings

### OPTIONAL EQUIPMENT:

- Category I or II Hitch
- 20" or 22" Disk Blades Cut Out or Smooth
- Disk Spacing—7½", 9" or 9" Front and 7½" Rear

### EXTRA EQUIPMENT:

- Heavy Duty Scraper Blades
- Balk Buster
- Cover Disk

## FEATURES

**RUGGED 3" x 5" GANG FRAME TUBES.** Provides rigid support for bearing hangers and gang components.

**HEAVY-DUTY BEARING HANGERS.** Rigid bearing hangers hold bearings in PERFECT alignment and assure gang rigidity for free turning disks. Hangers are secured to gang frames with heavy duty 5/8" U bolts.

### RELUBE BALL BEARINGS.

The bearings are shroud protected, heavy-duty, flangette type and have triple lip seals.

### FACTORY ASSEMBLED GANGS.

Gangs are tightened to 750 foot pounds, and locked securely with slotted nuts and cotter pins.

### ADJUSTING ANGLE OF CUT.

Adjusting is fast and easy from 13° to 21° in 4° increments to provide deeper penetration and more aggressive cutting and mixing action. Gangs adjust individually without tools by removing only one pin per gang. Disk gangs can be shim-leveled individually side-to-side.

### CHOICE OF DISKS.

You may chose from 20" or 22" disk blades in either smooth or cut out. All are high quality alloy steel for long life.

### SPACER AND BEARING SPOOLS.

Made from high strength cast iron to exacting specifications. The large flanged ends support more disk area and are arbor machined to assure a snug fit and precise bearing alignment.

### FRAME DESIGN.

Compact, close-coupled design allows easy lifting, straight pulling, and excellent maneuverability in small fields and around close obstacles.

### EXTRA EQUIPMENT FEATURES SCRAPERS.

Heavy-duty scraper arms and knife-type blades provide maximum cleaning and clearance of trash.

### COVER DISKS.

Easily bolts on to outside rear gangs to remove ridges and furrows left by the front gang.

### BALK BUSTER.

Bolts on to main frame between the front gangs to cut out the ridge normally left between the front gangs. Made of ¾" x 2" alloy steel.

### UNITIZED FRAME.

Constructed from 4" channel and 4" x 4" steel tubing. Reinforced and truss braced to resist twisting and bending loads.

ATHENS PLOW CO., INC. guarantees each piece of equipment against defective materials and workmanship for a period of one year from the date of delivery to the purchaser unless otherwise specified.

ATHENS PLOW CO., INC. reserves the right to make changes and/or improvements in design and construction of parts or machines without notice or obligation.



# ATHENS

## MODEL 65



*The Model 65 is ideal for wildlife applications and management. This lift-type tandem disc harrow is available in 8' 0", 8' 4", and 9' 6" widths making it the perfect choice for plantations and ranches.*



" WE PLOW THE EARTH "



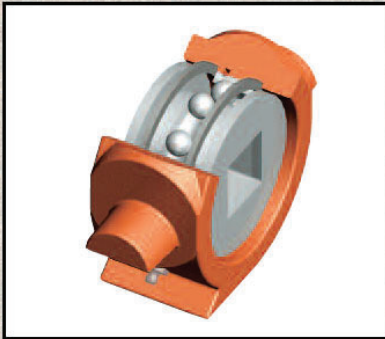


## STANDARD EQUIPMENT

- Disc Blades, 22" or 24" Diameter
- Relube Quadraseal Ball Bearings
- Rigid Bearing Hangers with Wear Plates
- 1.25" Square Cold Rolled Axle
- Spacing, 9" or 9" Front & 7.5" Rear
- Adjustable Angle of Cut: 15°, 18° or 21°
- Gang Wrench

## OPTIONAL EQUIPMENT

- Spring Bearing Hangers with Wear Plates
- Scrapers
- Cover Discs
- Balk Buster



### Quadraseal Ball Bearings

Strong relube QUADRASEAL ball bearings on the Model 65 mean long life and less downtime.

### DISC BLADES

Available in 22 and 24 inch sizes. Athens Plow offers tailored solutions to meet your disking needs.

**Smooth blades** are best utilized in normal field conditions. They are more economical, wear longer, weigh more than cutout blades, and cut crop residue evenly.

**Cutout blades** are more aggressive and trap residue better than smooth blades.

## MODEL 65 SPECIFICATIONS

WIDTH OF CUT	NUMBER OF DISCS	DISC SPACING		NUMBER OF BEARINGS	*APPROX. DBHP	APPROX. WEIGHT (lbs.)
		FRONT	REAR			
8' 0"	20	9"	9"	8	70	1,700
8' 4"	22	9"	7.5"	8	75	1,800
9' 6"	24	9"	9"	8	85	2,000
	26	9"	7.5"			

\*Approximate Draw Bar Horse Power is only a guide. Extremely hard, soft, hilly or boggy conditions will change these figures.



**Versatility:** The Hitch on the Model 65 is designed to adapt to a Category II Free Link or a Category II Quick Hitch.



**The Rigid Bearing Hanger** features a **Wear Plate** that bolts onto the front-side of the Bearing Hanger adding extra protection to the front and bottom of the Bearing Housing.



**The Spring Bearing Hanger** provides maximum strength without sacrificing flexibility. It also features a **Wear Plate** which protects the front and bottom of the Bearing Housing.

Athens Plow Co., Inc. guarantees each piece of equipment against defective materials and workmanship for a period of one year from the date of delivery to the purchaser unless otherwise specified. Athens Plow Co., Inc. reserves the right to make changes and/or improvements in design and construction of parts or machines without notice or obligation.



# ATHENS

## MODEL 97



*The Model 97 is ideal for wildlife applications and management. This lift-type offset disc harrow is available in widths from 6' 2" to 9' 0", making it the perfect choice for plantations and ranches.*



" WE PLOW THE EARTH "



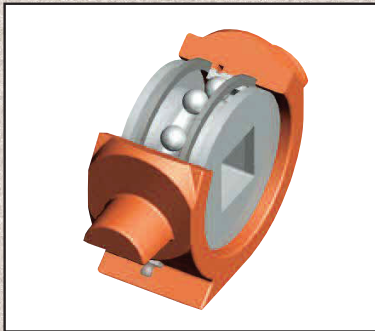


## STANDARD EQUIPMENT

- Disc Blades, 22" or 24" Diameter
- 9" Spacing
- Relube Quadraseal Ball Bearings
- Rigid Bearing Hangers with Wear Plates
- 1.25" Square Cold Rolled Axle
- Adjustable Angle of Cut: 18° or 21°
- Gang Wrench

## OPTIONAL EQUIPMENT

- Spring Bearing Hangers with Wear Plates
- Scrapers
- Cover Discs



### Quadraseal Ball Bearings

Strong relube QUADRASEAL ball bearings on the Model 97 mean long life and less downtime.



### DISC BLADES

Available in 22 and 24 inch sizes. Athens Plow offers tailored solutions to meet your disking needs.

**Smooth blades** are best utilized in normal field conditions. They are more economical, wear longer, weigh more than cutout blades, and cut crop residue evenly.

**Cutout blades** are more aggressive and trap residue better than smooth blades.

## MODEL 97 SPECIFICATIONS

WIDTH OF CUT	NUMBER OF DISCS	NUMBER OF BEARINGS	*APPROX. HORSE POWER	APPROX. WEIGHT (lbs.)
6' 2"	16	6	50 - 60	1,385
6' 10"	18	8	60 - 70	1,565
7' 6"	20	8	70 - 80	1,672
WIDE MAIN FRAME - CAT. II/III HITCH				
8' 4"	22	8	80 - 90	1,798
9' 0"	24	8	90 - 100	1,898

\*Approximate Horse Power is only a guide. Extremely hard, soft, hilly or boggy conditions will change these figures.



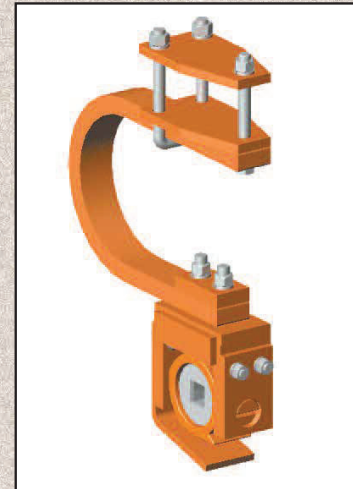
### The Top-Hitch Brace

on the Model 97 adds strength and durability to the hitch. Designed with a 1.5" diameter rod and a heavy duty spring, this brace is built to last.



### The Rigid Bearing Hanger

features a **Wear Plate** that bolts onto the front-side of the Bearing Hanger adding extra protection to the front and bottom of the Bearing Housing.



### The Spring Bearing Hanger

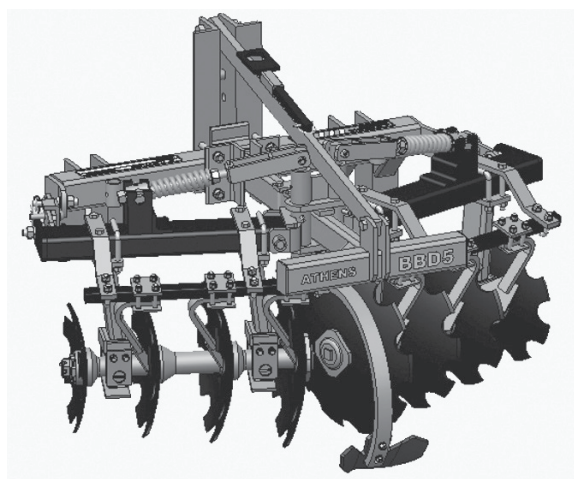
provides maximum strength without sacrificing flexibility. It also features a **Wear Plate** which protects the front and bottom of the Bearing Housing.

Athens Plow Co., Inc. guarantees each piece of equipment against defective materials and workmanship for a period of one year from the date of delivery to the purchaser unless otherwise specified. Athens Plow Co., Inc. reserves the right to make changes and/or improvements in design and construction of parts or machines without notice or obligation.





## ATHENS BBD5/BBD6 LIFT-TYPE DISK HARROW



### SPECIFICATIONS:

Cutting Width 5' 0" & 6' 6"

Disc Spacing 9"

Disc Diameter 22" C/O Tapered

Cat. II Free Link or Quick Coupler

Relube Ball Bearings

Rigid or Spring Bearing Hangers

1 1/4" Cold Rolled Square Gang Axle  
with Gang Wrench

Adjustable Angle of Cut 15° and 18°

Heavy Duty Scrapers

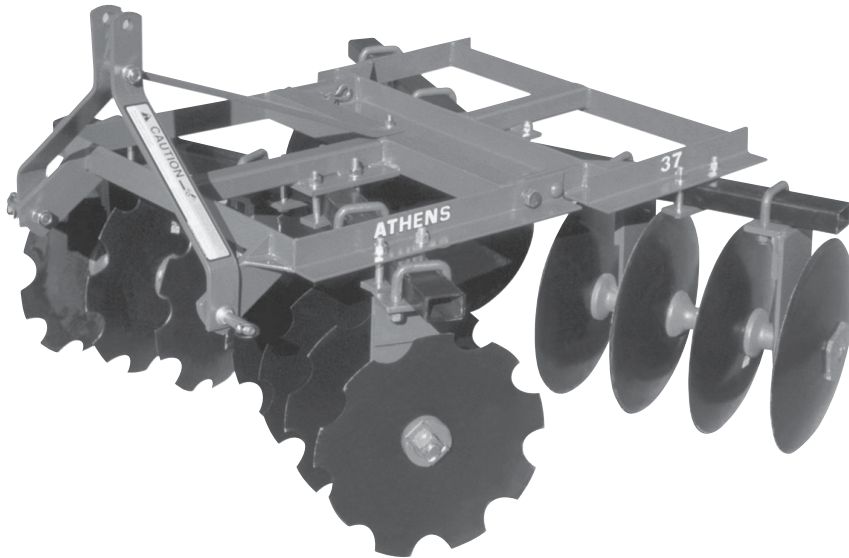
Balk Buster

MODEL NUMBER	DISC DIAM	TYPE OF DISC	DISC THICK	# OF DISC	DISC SPACING	# OF BRGS	APX WT (LBS)	CALL FOR PRICE
<u>5' 0" WIDE</u>								
BBD5-0827-65T	22" Tap	C/O	.197	8	9"	4	985	
<u>6' 6" WIDE</u>								
BBD6-1027-65T	22" Tap	C/O	.197	10	9"	4	1017	





## ATHENS 37 LIFT TYPE DISK HARROW



### SPECIFICATIONS:

Cutting Width – 5'2" to 6'5"

Disc Spacing – 7", 9", or 9"F/7"R

Discs – 18" Diameter – CO / SM

### STANDARD EQUIPMENT:

Category I Hitch

Adjustable Angle of Cut

1" High Carbon Steel Square Axles

Factory Assembled Gangs

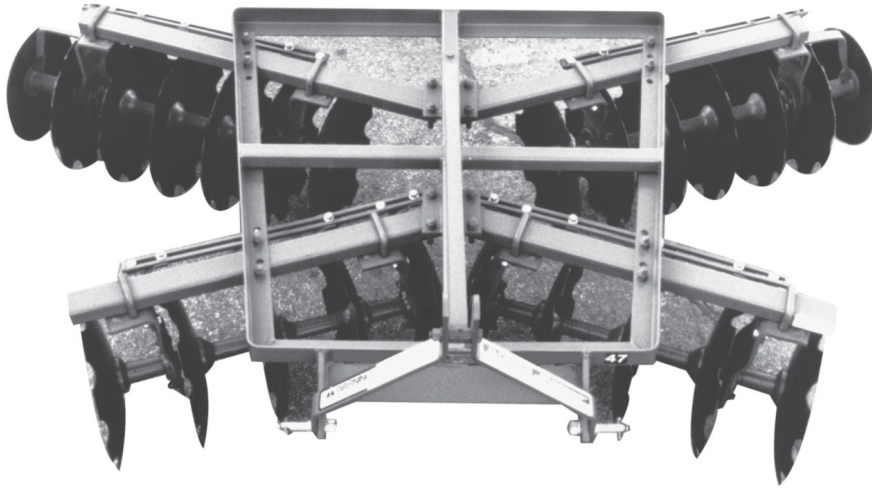
Triple-Lip Sealed Ball Bearings

<u>MODEL NUMBER</u>	<u>DISK DIAM</u>	<u>TYPE OF DISK</u>		<u>DISK THCK</u>	<u># OF DISK</u>	<u>DISK SPACING</u>		<u># OF BRGS</u>	<u>APX WT</u>	<u>CALL FOR PRICE</u>
		<u>FRNT</u>	<u>REAR</u>			<u>FRNT</u>	<u>REAR</u>			
<u>5'2" WIDE</u>										
037-1611-010	18	C.O.	C.O.	.118	16	7"	7"	8	624	
037-1611-110	18	SM.	SM.	.118	16	7"	7"	8	640	
037-1611-410	18	C.O.	SM.	.118	16	7"	7"	8	632	
<u>6'3" WIDE</u>										
037-1621-010	18	C.O.	C.O.	.118	16	9"	9"	8	654	
037-1621-110	18	SM.	SM.	.118	16	9"	9"	8	670	
037-1621-410	18	C.O.	SM.	.118	16	9"	9"	8	662	
<u>6'5" WIDE</u>										
037-1831-010	18	C.O.	C.O.	.118	18	9"	7"	8	680	
037-1831-110	18	SM.	SM.	.118	18	9"	7"	8	698	
037-1831-410	18	C.O.	SM.	.118	18	9"	7"	8	690	
037-2011-010	18	C.O.	C.O.	.118	20	7"	7"	8	702	
037-2011-110	18	SM.	SM.	.118	20	7"	7"	8	722	
037-2011-410	18	C.O.	SM.	.118	20	7"	7"	8	712	





## ATHENS 47 LIFT TYPE DISK HARROW



### SPECIFICATIONS:

Cutting Width – 6'3" to 7'9"  
 Disk Spacing – 7", 9", or 9"F/7"R  
 18" or 20" Disks – CO/SM

### STANDARD EQUIPMENT:

Category I Hitch  
 Adjustable Angle of Cut  
 1" High Carbon Square Axles  
 Factory Assembled Gangs  
 Triple Lip Sealed Ball Bearings

<u>MODEL NUMBER</u>	<u>DISC DIAM</u>	<u>TYPE OF DISC</u>		<u>DISC THCK</u>	<u># OF DISC</u>	<u>DISC SPACING</u>		<u># OF BRGS</u>	<u>APX WT</u>	<u>CALL FOR PRICE</u>
		<u>FRNT</u>	<u>REAR</u>			<u>FRNT</u>	<u>REAR</u>			
<u>6' 3" WIDE</u>										
047-1621-010	18"	C.O.	C.O.	.118	16	9"	9"	8	664	
047-1621-020	20"	C.O.	C.O.	.138	16	9"	9"	8	712	
047-1621-110	18"	SM.	SM.	.118	16	9"	9"	8	680	
047-1621-120	20"	SM.	SM.	.118	16	9"	9"	8	712	
047-1621-410	18"	C.O.	SM.	.118	16	9"	9"	8	672	
047-1621-420	20"	C.O.	SM.	.138	16	9"	9"	8	712	
<u>6' 5" WIDE</u>										
047-1831-010	18"	C.O.	C.O.	.118	18	9"	7"	8	690	
047-1831-020	20"	C.O.	C.O.	.138	18	9"	7"	8	744	
047-1831-110	18"	SM.	SM.	.118	18	9"	7"	8	708	
047-1831-120	20"	SM.	SM.	.118	18	9"	7"	8	744	
047-1831-410	18"	C.O.	SM.	.118	18	9"	7"	8	700	
047-1831-420	20"	C.O.	SM.	.138	18	9"	7"	8	744	
047-2011-010	18"	C.O.	C.O.	.118	20	7"	7"	8	712	
047-2011-020	20"	C.O.	C.O.	.138	20	7"	7"	8	772	
047-2011-110	18"	SM.	SM.	.118	20	7"	7"	8	732	
047-2011-120	20"	SM.	SM.	.118	20	7"	7"	8	772	
047-2011-410	18"	C.O.	SM.	.118	20	7"	7"	8	722	
047-2011-420	20"	C.O.	SM.	.138	20	7"	7"	8	772	





<u>MODEL NUMBER</u>	<u>DISC DIAM</u>	<u>TYPE O</u>	<u>DISC REAR</u>	<u>DISC THCK</u>	<u># OF DISC</u>	<u>DISC SPACING</u>		<u># OF BRGS</u>	<u>APX WT</u>	<u>CALL FOR PRICE</u>
		FRNT				FRNT	EAR			
<u>7' 6" WIDE</u>										
047-2231-010	18"	C.O.	C.O.	.118	22	9"	7"	8	762	
047-2231-020	20"	C.O.	C.O.	.138	22	9"	7"	8	828	
047-2231-110	18"	SM.	SM.	.118	22	9"	7"	8	784	
047-2231-120	20"	SM.	SM.	.118	22	9"	7"	8	828	
047-2231-410	18"	C.O.	SM.	.118	22	9"	7"	8	773	
047-2231-420	20"	C.O.	SM.	.138	22	9"	7"	8	828	
047-2411-010	18"	C.O.	C.O.	.118	24	7"	7"	8	782	
047-2411-020	20"	C.O.	C.O.	.138	24	7"	7"	8	854	
047-2411-110	18"	SM.	SM.	.118	24	7"	7"	8	806	
047-2411-120	20"	SM.	SM.	.118	24	7"	7"	8	854	
047-2411-410	18"	C.O.	SM.	.118	24	7"	7"	8	794	
047-2411-420	20"	C.O.	SM.	.138	24	7"	7"	8	854	
<u>7' 9" WIDE</u>										
047-2021-010	18"	C.O.	C.O.	.118	20	9"	9"	8	737	
047-2021-020	20"	C.O.	C.O.	.138	20	9"	9"	8	797	
047-2021-110	18"	SM.	SM.	.118	20	9"	9"	8	757	
047-2021-120	20"	SM.	SM.	.118	20	9"	9"	8	797	
047-2021-410	18"	C.O.	SM.	.118	20	9"	9"	8	747	
047-2021-420	20"	C.O.	SM.	.138	20	9"	9"	8	797	





## ATHENS 52 LIFT-TYPE TANDEM DISK HARROW



### SPECIFICATIONS:

Cutting Width 6' 6", 7' 0", 7' 11", and 8' 2"

Disc Spacing 7 1/2", 9", or 9" F and 7 1/2" R

Disc Diameter 18" or 20" C/O or SM

Cat. I Free Link

Relube Ball Bearings

Flangette Bearing Hangers

1 1/8" Cold Rolled Square Gang Axle  
with Gang Wrench

Adjustable Angle of Cut 15° and 18°

Heavy Duty Scrapers (Extra Equipment)

Cover Discs (Extra Equipment)

<u>MODEL NUMBER</u>	<u>DISC DIA</u>	<u>TYPE OF DISC</u>		<u>DISC THICK</u>	<u># OF DISC</u>	<u>DISC SPACING</u>		<u># OF BRGS</u>	<u>APX WT</u>	<u>CALL FOR PRICE</u>
		FRT	REAR			FRT	REAR			
<u>6' 6" WIDE</u>										
052-1622-211	18"	C/O	C/O	.138	16	9"	9"	8	823	
052-1622-311	18"	SM	SM	.138	16	9"	9"	8	855	
052-1622-511	18"	C/O	SM	.138	16	9"	9"	8	839	
052-1622-221	20"	C/O	C/O	.148	16	9"	9"	8	868	
052-1622-321	20"	SM	SM	.148	16	9"	9"	8	904	
052-1622-521	20"	C/O	SM	.148	16	9"	9"	8	886	
<u>7' 0" WIDE</u>										
052-1832-211	18"	C/O	C/O	.138	18	9"	7-1/2"	8	872	
052-1832-311	18"	SM	SM	.138	18	9"	7-1/2"	8	908	
052-1832-511	18"	C/O	SM	.138	18	9"	7-1/2"	8	892	
052-1832-221	20"	C/O	C/O	.148	18	9"	7-1/2"	8	922	
052-1832-321	20"	SM	SM	.148	18	9"	7-1/2"	8	962	
052-1832-521	20"	C/O	SM	.148	18	9"	7-1/2"	8	944	
052-2012-211	18"	C/O	C/O	.138	20	7-1/2"	7-1/2"	8	898	
052-2012-311	18"	SM	SM	.138	20	7-1/2"	7-1/2"	8	938	
052-2012-511	18"	C/O	SM	.138	20	7-1/2"	7-1/2"	8	918	
052-2012-221	20"	C/O	C/O	.148	20	7-1/2"	7-1/2"	8	954	
052-2012-321	20"	SM	SM	.148	20	7-1/2"	7-1/2"	8	998	
052-2012-521	20"	C/O	SM	.148	20	7-1/2"	7-1/2"	8	976	





MODEL NUMBER	DISC DIAM	TYPE OF DISC		DISC THICK	# OF DISC	DISC SPACING		# OF BRGS	APX WT	CALL FOR PRICE
		FRT	REAR			FRT	REAR			
<u>7' 11" WIDE</u>										
052-2022-211	18"	C/O	C/O	.138	20	9"	9"	8	926	
052-2022-311	18"	SM	SM	.138	20	9"	9"	8	966	
052-2022-511	18"	C/O	SM	.138	20	9"	9"	8	946	
052-2022-221	20"	C/O	C/O	.148	20	9"	9"	8	982	
052-2022-321	20"	SM	SM	.148	20	9"	9"	8	1026	
052-2022-521	20"	C/O	SM	.148	20	9"	9"	8	1004	
<u>8' 2" WIDE</u>										
052-2232-211	18"	C/O	C/O	.138	22	9"	7-1/2"	8	946	
052-2232-311	18"	SM	SM	.138	22	9"	7-1/2"	8	990	
052-2232-511	18"	C/O	SM	.138	22	9"	7-1/2"	8	970	
052-2232-221	20"	C/O	C/O	.148	22	9"	7-1/2"	8	1008	
052-2232-321	20"	SM	SM	.148	22	9"	7-1/2"	8	1057	
052-2232-521	20"	C/O	SM	.148	22	9"	7-1/2"	8	1035	
052-2412-211	18"	C/O	C/O	.138	24	7-1/2"	7-1/2"	8	966	
052-2412-311	18"	SM	SM	.138	24	7-1/2"	7-1/2"	8	1014	
052-2412-511	18"	C/O	SM	.138	24	7-1/2"	7-1/2"	8	990	
052-2412-221	20"	C/O	C/O	.148	24	7-1/2"	7-1/2"	8	1033	
052-2412-321	20"	SM	SM	.148	24	7-1/2"	7-1/2"	8	1086	
052-2412-521	20"	C/O	SM	.148	24	7-1/2"	7-1/2"	8	1060	

### EXTRA EQUIPMENT

SCRAPERS	WIDTH	SPACING	APPROX. WEIGHT
9-052-916220	6' 6"	9"	122#
9-052-918320	7' 0"	9" F 7 1/2" R	131#
9-052-920120	7' 0"	7 1/2"	140#
9-052-920220	7' 11"	9"	147#
9-052-922320	8' 2"	9" F 7 1/2" R	157#
9-052-924120	8' 2"	7 1/2"	166#

COVER DISCS	DESCRIPTION	APPROX. WEIGHT
9-0	Cover Discs w/o Scraper w/ 16" Disc	34#
9-0	Cover Discs w/ Scraper w/ 16" Disc	43#

### OPTIONAL EQUIPMENT

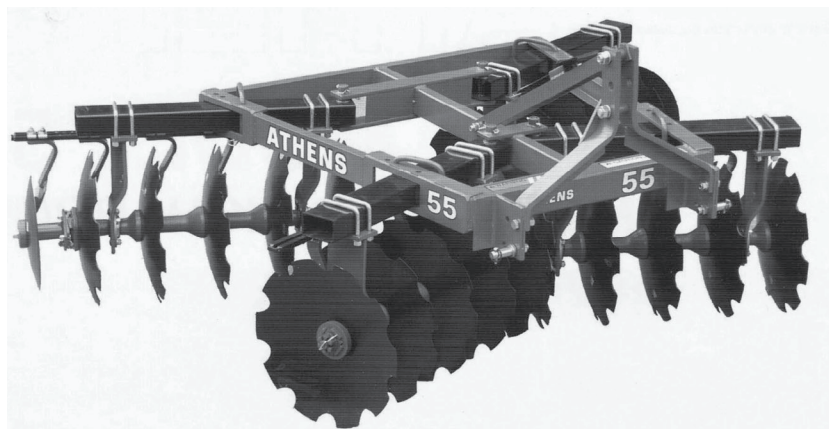
TO SPECIFY CAT. II IN LIEU OF CAT I, CHANGE THE 10<sup>TH</sup> DIGIT FROM 1 TO 2.







## ATHENS 55 LIFT TYPE DISK HARROW



### SPECIFICATIONS:

Cutting Width 6'6" to 10'9"  
 Disk spacing 7-1/2", 9" or  
 9" Front, 7-1/2" Rear  
 20" or 22" Disks – Cutout or Smooth  
 Heavy Duty Scrapers (Extra Equip.)  
 Category I or II Hitch  
 Relube Ball Bearings

### STANDARD EQUIPMENT:

Category II Hitch  
 1-1/8" Cold Rolled Square Axles  
 W/Wrench  
 Tapered Outside Rear Disk Gangs  
 Factory Assembled Gangs  
 Adjustable Angle of Cut  
 Flangette Bearing Hangers  
 Relube Ball Bearings

<u>MODEL NUMBER</u>	<u>DISC DIAM</u>	<u>TYPE OF DISC</u> FRNT REAR	<u>DISC THCK</u>	<u># OF DISC</u>	<u>DISC SPACING</u> FRNT REAR	<u># OF BRGS</u>	<u>APX WT</u>	<u>CALL FOR PRICE</u>
<u>6' 6" WIDE</u>								
055-1622-222	20"	C.O. C.O.	.138	16	9" 9"	8	1006	
055-1622-642	22"	C.O. C.O.	.177	16	9" 9"	8	1054	
055-1622-322	20"	SM. SM.	.138	16	9" 9"	8	1024	
055-1622-742	22"	SM. SM.	.177	16	9" 9"	8	1072	
055-1622-522	20"	C.O. SM.	.138	16	9" 9"	8	1014	
055-1622-842	22"	C.O. SM.	.177	16	9" 9"	8	1063	
<u>7' 0" WIDE</u>								
055-1832-222	20"	C.O. C.O.	.138	18	9" 7-1/2"	8	1039	
055-1832-642	22"	C.O. C.O.	.177	18	9" 7-1/2"	8	1096	
055-1832-322	20"	SM. SM.	.138	18	9" 7-1/2"	8	1058	
055-1832-742	22"	SM. SM.	.177	18	9" 7-1/2"	8	1117	
055-1832-522	20"	C.O. SM.	.138	18	9" 7-1/2"	8	1049	
055-1832-842	22"	C.O. SM.	.177	18	9" 7-1/2"	8	1108	
055-2012-222	20"	C.O. C.O.	.138	20	7-1/2" 7-1/2"	8	1072	
055-2012-642	22"	C.O. C.O.	.177	20	7-1/2" 7-1/2"	8	1138	
055-2012-322	20"	SM. SM.	.138	20	7-1/2" 7-1/2"	8	1092	
055-2012-742	22"	SM. SM.	.177	20	7-1/2" 7-1/2"	8	1161	
055-2012-522	20"	C.O. SM.	.138	20	7-1/2" 7-1/2"	8	1081	
055-2012-842	22"	C.O. SM.	.177	20	7-1/2" 7-1/2"	8	1149	



<u>MODEL NUMBER</u>	<u>DISC DIAM</u>	<u>TYPE OF DISC</u>		<u>DISC THCK</u>	<u># OF DISC</u>	<u>DISC SPACING</u>		<u># OF BRGS</u>	<u>APX WT</u>	<u>CALL FOR PRICE</u>
		<u>FRNT</u>	<u>REAR</u>			<u>FRNT</u>	<u>EAR</u>			
<u>7' 11" WIDE</u>										
055-2022-222	20"	C.O.	C.O.	.138	20	9"	9"	8	1125	
055-2022-642	22"	C.O.	C.O.	.177	20	9"	9"	8	1192	
055-2022-322	20"	SM.	SM.	.138	20	9"	9"	8	1146	
055-2022-742	22"	SM.	SM.	.177	20	9"	9"	8	1215	
055-2022-522	20"	C.O.	SM.	.138	20	9"	9"	8	1135	
055-2022-842	22"	C.O.	SM.	.177	20	9"	9"	8	1203	
<u>8' 2" WIDE</u>										
055-2232-222	20"	C.O.	C.O.	.138	22	9"	7-1/2"	8	1155	
055-2232-642	22"	C.O.	C.O.	.177	22	9"	7-1/2"	8	1232	
055-2232-322	20"	SM.	SM.	.138	22	9"	7-1/2"	8	1179	
055-2232-742	22"	SM.	SM.	.177	22	9"	7-1/2"	8	1257	
055-2232-522	20"	C.O.	SM.	.138	22	9"	7-1/2"	8	1168	
055-2232-842	22"	C.O.	SM.	.177	22	9"	7-1/2"	8	1245	
055-2412-222	20"	C.O.	C.O.	.138	24	7-1/2"	7-1/2"	8	1185	
055-2412-642	22"	C.O.	C.O.	.177	24	7-1/2"	7-1/2"	8	1271	
055-2412-322	20"	SM.	SM.	.138	24	7-1/2"	7-1/2"	8	1211	
055-2412-742	22"	SM.	SM.	.177	24	7-1/2"	7-1/2"	8	1299	
055-2412-522	20"	C.O.	SM.	.138	24	7-1/2"	7-1/2"	8	1198	
055-2412-842	22"	C.O.	SM.	.177	24	7-1/2"	7-1/2"	8	1285	
<u>9' 4" WIDE</u>										
055-2422-222	20"	C.O.	C.O.	.138	24	9"	9"	8	1249	
055-2422-642	22"	C.O.	C.O.	.177	24	9"	9"	8	1335	
055-2422-322	20"	SM.	SM.	.138	24	9"	9"	8	1275	
055-2422-742	22"	SM.	SM.	.177	24	9"	9"	8	1363	
055-2422-522	20"	C.O.	SM.	.138	24	9"	9"	8	1262	
055-2422-842	22"	C.O.	SM.	.177	24	9"	9"	8	1349	
055-2632-222	20"	C.O.	C.O.	.138	26	9"	7-1/2"	8	1289	
055-2632-642	22"	C.O.	C.O.	.177	26	9"	7-1/2"	8	1385	
055-2632-322	20"	SM.	SM.	.138	26	9"	7-1/2"	8	1317	
055-2632-742	22"	SM.	SM.	.177	26	9"	7-1/2"	8	1415	
055-2632-522	20"	C.O.	SM.	.138	26	9"	7-1/2"	8	1304	
055-2632-842	22"	C.O.	SM.	.177	26	9"	7-1/2"	8	1401	
055-2812-222	20"	C.O.	C.O.	.138	28	7-1/2"	7-1/2"	8	1301	
055-2812-642	22"	C.O.	C.O.	.177	28	7-1/2"	7-1/2"	8	1406	
055-2812-322	20"	SM.	SM.	.138	28	7-1/2"	7-1/2"	8	1331	
055-2812-742	22"	SM.	SM.	.177	28	7-1/2"	7-1/2"	8	1439	
055-2812-522	20"	C.O.	SM.	.138	28	7-1/2"	7-1/2"	8	1316	
055-2812-842	22"	C.O.	SM.	.177	28	7-1/2"	7-1/2"	8	1422	





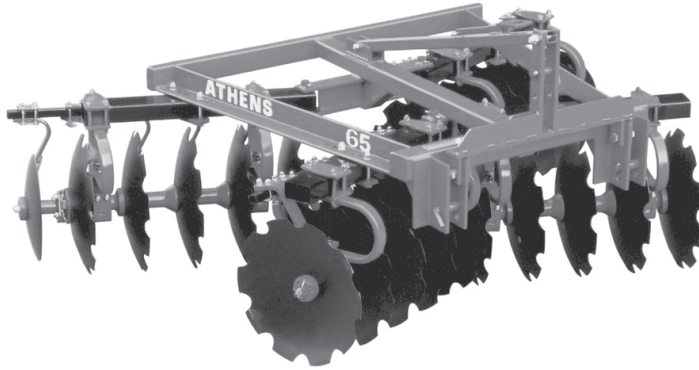
<u>EXTRA EQUIPMENT</u>	<u>WIDTH</u>	<u>SPACING</u>	<u>APX WT</u>	<u>CALL FOR PRICE</u>
9-055-916220 SCRAPERS	6' 6"	9"	122#	
9-055-918320 SCRAPERS	7' 0"	9"F 7-1/2"R	131#	
9-055-920120 SCRAPERS	7' 0"	7-1/2"	140#	
9-055-920220 SCRAPERS	7' 11"	9"	147#	
9-055-922320 SCRAPERS	8' 2"	9"F 7-1/2"R	157#	
9-055-924120 SCRAPERS	8' 2"	7-1/2"	166#	
9-055-924220 SCRAPERS	9' 4"	9"	175#	
9-055-926320 SCRAPERS	9' 4"	9"F 7-1/2"R	184#	
9-055-928120 SCRAPERS	9' 4"	7-1/2"	193#	

<u>EXTRA EQUIPMENT</u>	<u>APX WT</u>
9-055-700016 COVER DISC W/O SCRAPER W/ 16" DISC	34#
9-055-709016 COVER DISC W/ SCRAPERS W/ 16" DISC	43#
9-055-800000 BALK BUSTER	38#

OPTIONAL EQUIPMENT:

TO SPECIFY CAT. #1 IN LIEU OF CAT.#II, CHANGE  
10<sup>TH</sup> DIGIT FROM 2 TO 1

# ATHENS 65 LIFT-TYPE TANDEM DISK HARROW



## SPECIFICATIONS:

Cutting Width 8'0", 8'4", and 9'6"  
 Disc Spacing 9", or 9" Front – 7 1/2" Rear  
 Disc Diameter 22" or 24"  
 Rigid or Spring Bearing Hangers  
 Cat. II Free Link/Quick Coupler  
 Relube Ball Bearings  
 1 1/4" Cold Rolled Square Gang Axle  
 with Gang Wrench

<u>MODEL NUMBER</u>	<u>DISC DIAM</u>	<u>TYPE OF DISC</u>		<u>DISC THCK</u>	<u># OF DISC</u>	<u>DISC SPACING</u>		<u># OF BRGS</u>	<u>APX WT</u>	<u>CALL FOR PRICE</u>
		<u>FRNT</u>	<u>REAR</u>			<u>FRNT</u>	<u>REAR</u>			
<u>8' 0" WIDE</u>										
065-2027-650	22"	C.O.	C.O.	.197	20	9"	9"	8	1710	
065-2027-660	24"	C.O.	C.O.	.197	20	9"	9"	8	1770	
065-2027-750	22"	SM.	SM.	.197	20	9"	9"	8	1730	
065-2027-760	24"	SM.	SM.	.197	20	9"	9"	8	1790	
065-2027-850	22"	C.O.	SM.	.197	20	9"	9"	8	1720	
065-2027-860	24"	C.O.	SM.	.197	20	9"	9"	8	1780	
<u>8' 4" WIDE</u>										
065-2237-650	22"	C.O.	C.O.	.197	22	9"	7-1/2"	8	1762	
065-2237-750	22"	SM.	SM.	.197	22	9"	7-1/2"	8	1784	
065-2237-850	22"	C.O.	SM.	.197	22	9"	7-1/2"	8	1774	
<u>9' 6" WIDE</u>										
065-2427-650	22"	C.O.	C.O.	.197	24	9"	9"	8	1872	
065-2427-660	24"	C.O.	C.O.	.197	24	9"	9"	8	1944	
065-2427-750	22"	SM.	SM.	.197	24	9"	9"	8	1896	
065-2427-760	24"	SM.	SM.	.197	24	9"	9"	8	1968	
065-2427-850	22"	C.O.	SM.	.197	24	9"	9"	8	1884	
065-2427-860	24"	C.O.	SM.	.197	24	9"	9"	8	1956	
065-2637-650	22"	C.O.	C.O.	.197	26	9"	7-1/2"	8	1914	
065-2637-750	22"	SM.	SM.	.197	26	9"	7-1/2"	8	1940	
065-2637-850	22"	C.O.	SM.	.197	26	9"	7-1/2"	8	1954	





EXTRA EQUIPMENT

SCRAPERS

		<u>SPACING</u>	<u>APX WT</u>	<u>CALL FOR PRICE</u>
9-065-920270	Scrapers for 8' 0" Units	9"	226	
*9-065-920260		9"	244	
9-065-922370	Scrapers for 8' 4" Units	9"F 7-1/2"R	241	
*9-065-922360		9"F 7-1/2"R	259	
9-065-924270	Scrapers for 9' 6" Units	9"	265	
*9-065-924260		9"	283	
9-065-926370	Scrapers for 9' 6" Units	9"F 7-1/2"R	280	
*9-065-926360		9"F 7-1/2"R	298	

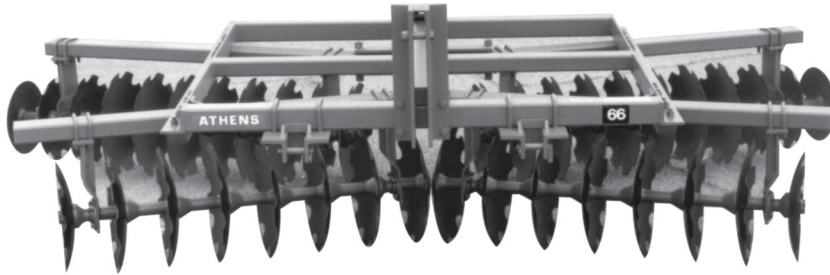
\*For Units with Spring Bearing Hangers

COVER DISC

9-065-700018	over Disc Assembly with 18" Disc w/o Scraper		40	
9-065-709018	over Disc Assembly with 18" Disc w/ Scraper		56	
9-065-800000	alk Buster		23	



## ATHENS 66 LIFT TYPE DISK HARROW



### SPECIFICATIONS:

Cutting Width 10'6" to 15'3"  
 Disk Spacing 7-1/2", 9" or 9"  
 Front and 7-1/2" Rear  
 Disk Blades – 20" or 22" Cutout  
 Or Smooth  
 Heavy Duty Scrapers (Extra  
 Equipment)  
 Category II or III Free Link  
 Or Quick Coupler Hitch

### STANDARD EQUIPMENT:

1-1/8" Cold Rolled Square Axle  
 Relube Ball Bearings  
 Flangette Bearing Hangers  
 Adjustable Angle of Cut 16 Degrees  
 To 21 Degrees  
 Tapered Outside Rear Disk Gangs

<u>MODEL NUMBER</u>	<u>DISC DIAM</u>	<u>TYPE OF DISC</u>		<u>DISC THCK</u>	<u># OF DISC</u>	<u>DISC SPACING</u>		<u># OF BRGS</u>	<u>APX WT</u>	<u>CALL FOR PRICE</u>
		<u>FRNT</u>	<u>REAR</u>			<u>FRNT</u>	<u>REAR</u>			
<u>10' 6" WIDE</u>										
066-3032-222	20"	C.O.	C.O.	.138	30	9"	7-1/2"	8	1924	
066-3032-642	22"	C.O.	C.O.	.177	30	9"	7-1/2"	8	2039	
066-3032-322	20"	SM.	SM.	.138	30	9"	7-1/2"	8	1957	
066-3032-742	22"	SM.	SM.	.177	30	9"	7-1/2"	8	2074	
066-3032-522	20"	C.O.	SM.	.138	30	9"	7-1/2"	8	1941	
066-3032-842	22"	C.O.	SM.	.177	30	9"	7-1/2"	8	2057	
066-3212-222	20"	C.O.	C.O.	.138	32	7-1/2"	7-1/2"	8	1947	
066-3212-642	22"	C.O.	C.O.	.177	32	7-1/2"	7-1/2"	8	2071	
066-3212-322	20"	SM.	SM.	.138	32	7-1/2"	7-1/2"	8	1982	
066-3212-742	22"	SM.	SM.	.177	32	7-1/2"	7-1/2"	8	2109	
066-3212-522	20"	C.O.	SM.	.138	32	7-1/2"	7-1/2"	8	1964	
066-3212-842	22"	C.O.	SM.	.177	32	7-1/2"	7-1/2"	8	2090	
<u>10' 9" WIDE</u>										
066-2822-222	20"	C.O.	C.O.	.138	28	9"	9"	8	1901	
066-2822-642	22"	C.O.	C.O.	.177	28	9"	9"	8	2006	
066-2822-322	20"	SM.	SM.	.138	28	9"	9"	8	1933	
066-2822-742	22"	SM.	SM.	.177	28	9"	9"	8	2039	
066-2822-522	20"	C.O.	SM.	.138	28	9"	9"	8	1916	
066-2822-842	22"	C.O.	SM.	.177	28	9"	9"	8	2022	





MODEL NUMBER	DISC DIAM	TYPE OF DISC		DISC THCK	# OF DISC	DISC SPACING		# OF BRGS	APX WT	CALL FOR PRICE
		FRNT	REAR			FRNT	REAR			
<u>12' 2" WIDE</u>										
066-3222-221	20"	C.O.	C.O.	.138	32	9"	9"	12	2044	
066-3222-641	22"	C.O.	C.O.	.177	32	9"	9"	12	2180	
066-3222-321	20"	SM.	SM.	.138	32	9"	9"	12	2064	
066-3222-741	22"	SM.	SM.	.177	32	9"	9"	12	2216	
066-3222-521	20"	C.O.	SM.	.138	32	9"	9"	12	2058	
066-3222-841	22"	C.O.	SM.	.177	32	9"	9"	12	2197	
<u>12' 11" WIDE</u>										
066-3632-221	20"	C.O.	C.O.	.138	36	9"	7-1/2"	12	2103	
066-3632-641	22"	C.O.	C.O.	.177	36	9"	7-1/2"	12	2257	
066-3632-321	20"	SM.	SM.	.138	36	9"	7-1/2"	12	2234	
066-3632-741	22"	SM.	SM.	.177	36	9"	7-1/2"	12	2298	
066-3632-521	20"	C.O.	SM.	.138	36	9"	7-1/2"	12	2219	
066-3632-841	22"	C.O.	SM.	.177	36	9"	7-1/2"	12	2279	
066-4012-221	20"	C.O.	C.O.	.138	40	7-1/2"	7-1/2"	12	2161	
066-4012-641	22"	C.O.	C.O.	.177	40	7-1/2"	7-1/2"	12	2334	
066-4012-321	20"	SM.	SM.	.138	40	7-1/2"	7-1/2"	12	2195	
066-4012-741	22"	SM.	SM.	.177	40	7-1/2"	7-1/2"	12	2406	
066-4012-521	20"	C.O.	SM.	.138	40	7-1/2"	7-1/2"	12	2177	
066-4012-841	22"	C.O.	SM.	.177	40	7-1/2"	7-1/2"	12	2356	
<u>13' 6" WIDE</u>										
066-3622-221	20"	C.O.	C.O.	.138	36	9"	9"	12	2194	
066-3622-641	22"	C.O.	C.O.	.177	36	9"	9"	12	2298	
066-3622-321	20"	SM.	SM.	.138	36	9"	9"	12	2207	
066-3622-741	22"	SM.	SM.	.177	36	9"	9"	12	2328	
066-3622-521	20"	C.O.	SM.	.138	36	9"	9"	12	2200	
066-3622-841	22"	C.O.	SM.	.177	36	9"	9"	12	2313	
<u>14' 1" WIDE</u>										
066-4032-221	20"	C.O.	C.O.	.138	40	9"	7-1/2"	12	2269	
066-4032-641	22"	C.O.	C.O.	.177	40	9"	7-1/2"	12	2387	
066-4032-321	20"	SM.	SM.	.138	40	9"	7-1/2"	12	2283	
066-4032-741	22"	SM.	SM.	.177	40	9"	7-1/2"	12	2421	
066-4032-521	20"	C.O.	SM.	.138	40	9"	7-1/2"	12	2276	
066-4032-841	22"	C.O.	SM.	.177	40	9"	7-1/2"	12	2405	
066-4412-221	20"	C.O.	C.O.	.138	44	7-1/2"	7-1/2"	12	2342	
066-4412-641	22"	C.O.	C.O.	.177	44	7-1/2"	7-1/2"	12	2476	
066-4412-321	20"	SM.	SM.	.138	44	7-1/2"	7-1/2"	12	2358	
066-4412-741	22"	SM.	SM.	.177	44	7-1/2"	7-1/2"	12	2513	
066-4412-521	20"	C.O.	SM.	.138	44	7-1/2"	7-1/2"	12	2349	
066-4412-841	22"	C.O.	SM.	.177	44	7-1/2"	7-1/2"	12	2495	



<u>MODEL NUMBER</u>	<u>DISC DIAM</u>	<u>TYPE OF DISC</u>		<u>DISC THCK</u>	<u># OF DISC</u>	<u>DISC SPACING</u>		<u># OF BRGS</u>	<u>APX WT</u>	<u>CALL FOR PRICE</u>
		FRNT	REAR			FRNT	REAR			

15' 0" WIDE

066-4022-221	20"	C.O.	C.O.	.138	40	9"	9"	16	2326	
066-4022-641	22"	C.O.	C.O.	.177	40	9"	9"	16	2444	
066-4022-321	20"	SM.	SM.	.138	40	9"	9"	16	2340	
066-4022-741	22"	SM.	SM.	.177	40	9"	9"	16	2478	
066-4022-521	20"	C.O.	SM.	.138	40	9"	9"	16	2282	
066-4022-841	22"	C.O.	SM.	.177	40	9"	9"	16	2462	

15' 3" WIDE

066-4432-221	20"	C.O.	C.O.	.138	44	9"	7-1/2"	16	2388	
066-4432-641	22"	C.O.	C.O.	.177	44	9"	7-1/2"	16	2522	
066-4432-321	20"	SM.	SM.	.138	44	9"	7-1/2"	16	2404	
066-4432-741	22"	SM.	SM.	.177	44	9"	7-1/2"	16	2559	
066-4432-521	20"	C.O.	SM.	.138	44	9"	7-1/2"	16	2397	
066-4432-841	22"	C.O.	SM.	.177	44	9"	7-1/2"	16	2542	
066-4812-221	20"	C.O.	C.O.	.138	48	7-1/2"	7-1/2"	16	2448	
066-4812-641	22"	C.O.	C.O.	.177	48	7-1/2"	7-1/2"	16	2598	
066-4812-321	20"	SM.	SM.	.138	48	7-1/2"	7-1/2"	16	2466	
066-4812-741	22"	SM.	SM.	.177	48	7-1/2"	7-1/2"	16	2638	
066-4812-521	20"	C.O.	SM.	.138	48	7-1/2"	7-1/2"	16	2457	
066-4812-841	22"	C.O.	SM.	.177	48	7-1/2"	7-1/2"	16	2618	

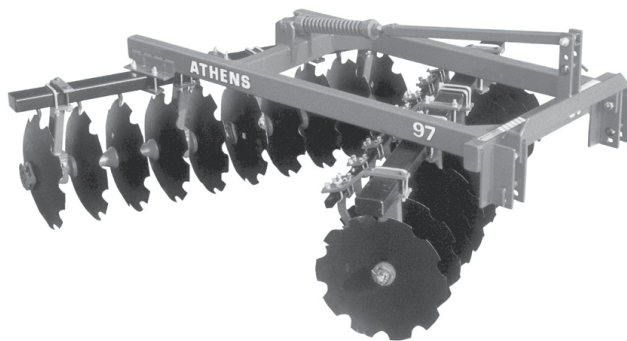
<u>EXTRA EQUIPMENT</u>	<u>WIDTH</u>	<u>SPACING</u>	<u>APX WT</u>	<u>CALL FOR PRICE</u>
------------------------	--------------	----------------	---------------	-----------------------

9-066-928220	RAPERS	10' 9"	9"	336
9-066-930320	RAPERS	10' 6"	9"F 7-1/2"R	360
9-066-932120	RAPERS	10' 6"	7-1/2"	384
9-066-932220	RAPERS	12' 2"	9"	390
9-066-936320	RAPERS	12' 11"	9"F 7-1/2"R	422
9-066-940120	RAPERS	12' 11"	7-1/2"	453
9-066-936220	RAPERS	13' 6"	9"	428
9-066-940320	RAPERS	14' 1"	9"F 7-1/2"R	459
9-066-944120	RAPERS	14' 1"	7-1/2"	493
9-066-940220	RAPERS	15' 0"	9"	463
9-066-944320	SCRAPERS	15' 3"	9"F 7-1/2"R	489
9-066-948120	RAPERS	15' 3"	7-1/2"	531
9-066-700016	COVER DISC W/O SCRAPERS			34
9-066-709016	COVER DISC W/ SCRAPERS			43
9-066-800000	BALK BUSTER			23





## ATHENS 97 LIFT TYPE OFFSET DISK HARROW



### SPECIFICATIONS:

Cutting Width 6'2" to 9'0"  
 Disk Spacing 9"  
 Disk Diameter 22" or 24"  
 Category II Hitch  
 Relube Ball Bearings  
 1 1/4" Cold Rolled Square Gang Axle  
 with Gang Wrench

<u>MODEL NUMBER</u>	<u>DISC DIAM</u>	<u>TYPE OF DISC</u> FRNT REAR	<u>DISC THCK</u>	<u># OF DISC</u>	<u>DISC SPACING</u>	<u># OF BRGS</u>	<u>APX WT</u>	<u>CALL FOR PRICE</u>
<u>6' 2" WIDE</u>								
097-1627-650	22"	C.O. C.O.	.197	16	9"	6	1337	
097-1627-660	24"	C.O. C.O.	.197	16	9"	6	1385	
<u>6' 10" WIDE</u>								
097-1827-650	22"	C.O. C.O.	.197	18	9"	8	1511	
097-1827-660	24"	C.O. C.O.	.197	18	9"	8	1565	
<u>7' 6" WIDE</u>								
097-2027-650	22"	C.O. C.O.	.197	20	9"	8	1612	
097-2027-660	24"	C.O. C.O.	.197	20	9"	8	1672	
<u>WIDE FRAME</u>								
<u>8' 4" WIDE</u>								
097-2227-650	22"	C.O. C.O.	.197	22	9"	8	1732	
097-2227-660	24"	C.O. C.O.	.197	22	9"	8	1798	
<u>9' 0" WIDE</u>								
097-2427-650	22"	C.O. C.O.	.197	24	9"	8	1826	
097-2427-660	24"	C.O. C.O.	.197	24	9"	8	1898	



## EXTRA EQUIPMENT

### SCRAPERS

9-097-916270	For 6' 2" Units	190
*9-097-916260		200
9-097-918270	For 6' 10" Units	222
*9-097-918260		241
9-097-920270	For 7' 6" Units	242
*9-097-920260		259
9-097-922270	For 8' 4" Units	261
*9-097-922260		278
9-097-924270	For 9' 0" Units	280
*9-097-924260		298

\*For Units with Spring Bearing Hangers

### COVER DISC

9-097-700018	Cover Disc Assembly with 18" Blade w/o Scraper	20
9-097-709018	Cover Disc Assembly with 18" Blade w/ Scraper	28

### QUICK HITCH BUSHINGS

101733	Cat. II & III Quick Coupler Adapter for 8' 4" and 9' 0" Units	7
--------	---	---