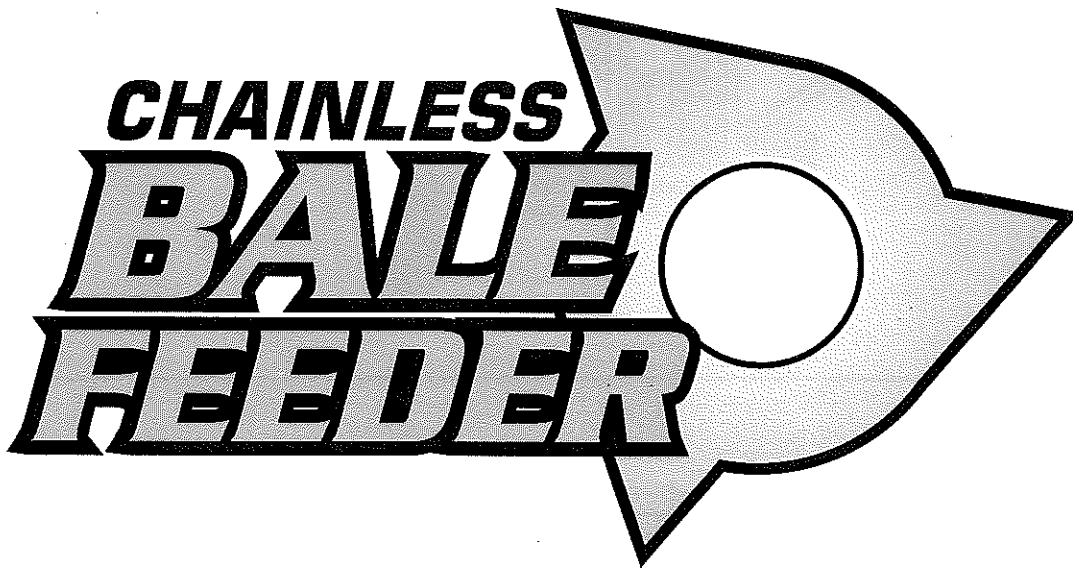


FB5000



2004
**Operators Manual/
Parts Book**

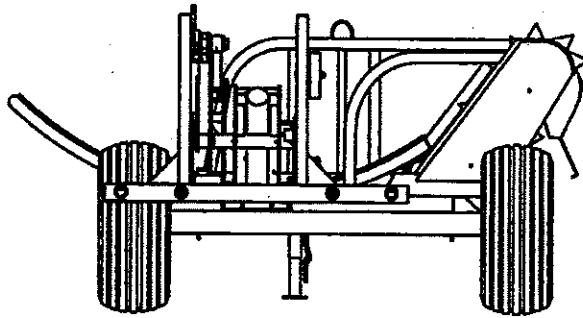


Fig. 1

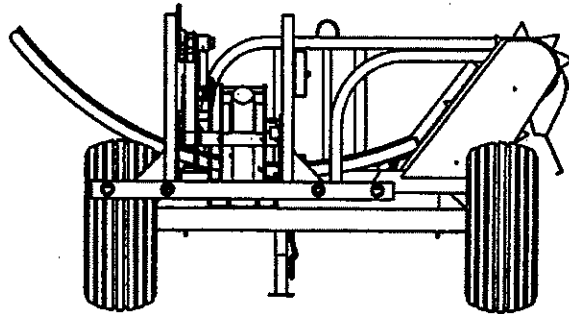
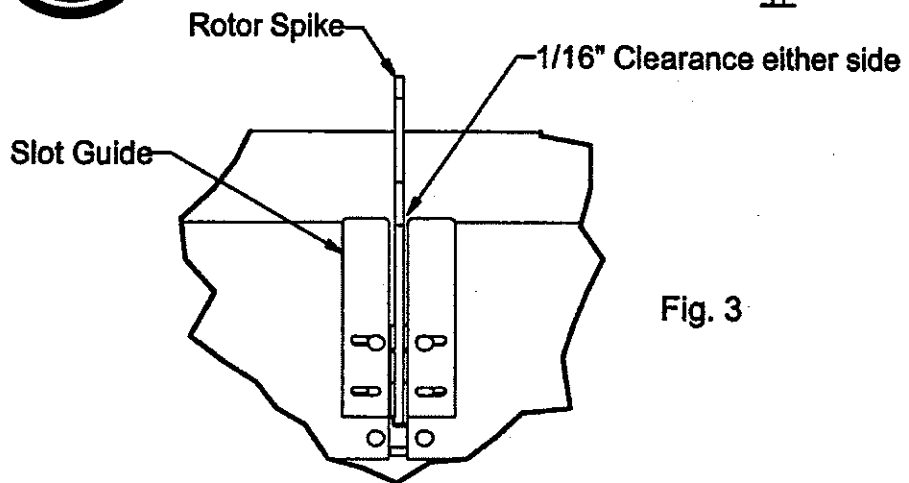
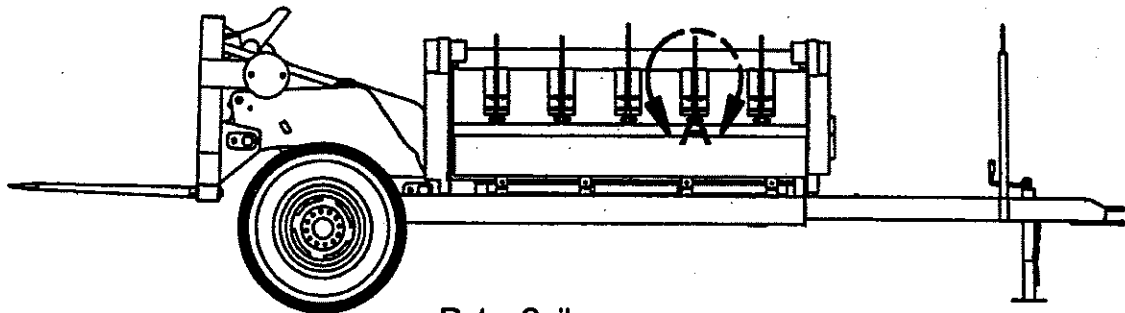


Fig. 2



DETAIL A

Fig. 3

AGWAY MANUFACTURING INC
2372 FLORADALE RD. RR#1 ELMIRA, ON N3B 2Z1
TEL. (519) 669-0387 FAX: 519-669-0597

Operating Instructions

Connecting the Bale Feeder to the Tractor

Connect the Bale Feeder to the drawbar of the tractor.

Connect the hoses so that:

Lever 1. Lever back- platform lifts

Lever 2. Lever back – rotors feed out. It will also operate the rear loading forks

Familiarize yourself with the hydraulic controls on the machine. Using your 2 hydraulic hand controls, three functions are achieved very simply.

Loading Mode

Lever 1

Controls the platform only

See fig. 1

When the platform is right down...

Lever 2

Will operate the rear loading forks

Feeding Mode

When the platform is in an up position, even slightly

Lever 2

See fig. 2

Will operate the feed rotors.

Loading Bales

Wrapped Bales

First remove the plastic wrap only. Do not remove string or net wrap at this stage. In most cases it does not matter which way the bale has been rolled up.

With the platform right down (using lever 1) use lever 2 to adjust the height of the loading forks to suit the bale size. Then back the forks into the bale.

Still using lever 2, raise the bale up off the ground and over towards the platform. For easy removal of net wrap, we recommend to stop before bale rests on platform. With the net wrap removed, finish lowering the bale onto the platform. Note: Bales tied with strings can be set onto the platform before removing strings.

Now withdraw forks and lower the forks right back down to ground level. After you hear the forks reset to their locked position you may adjust forks to suit second bale if required.

Always raise the forks to transport position when driving.

Hay Bales

Lower the bale right down on platform (unless net wrap is used) then remove strings.

Note the warning on the front indicator label "DO NOT LIFT PLATFORM". This shows that the forks are in a raised position above the platform.

Always return the forks back immediately after loading the bale. Lower them right down to reset, and then raise forks to transport position, unless loading another bale.

If loading a second bale, raise forks to selected bale height, then back the forks into the bale and raise to transport position.

Transporting

Lift the platform up sufficiently to cradle the bale securely against the rotors while traveling.

Feeding out

Raise platform 6" then start the feed rotors (using lever 2). Slowly raise platform (using lever 1) until the bale is pushed against both feed rotors and starts to turn.

As the bale is fed out and the diameter reduces, raise the platform (using lever 1) to keep the bale against both feed rotors.

Square Bales

Lower loading fork fully then back into bale. Lower the bale onto platform then remove the strings.

When you're ready to feed, lift the platform 6" then start the feed rotors (using lever 2). Slowly raise the platform until bale slides up against both feed rotors.

Most silage bales will tease out nicely. However, some hay or straw won't, especially if they were bale wet. If several biscuits are coming together, lower the platform slightly and/or reverse the rotors 2 turns then forward 4 turns, reverse, forward, continue.

Right

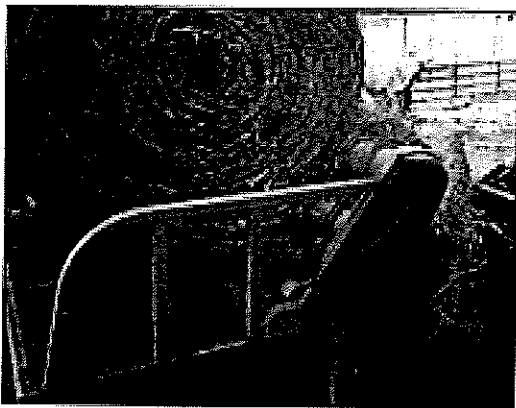


Fig. 4

Wrong

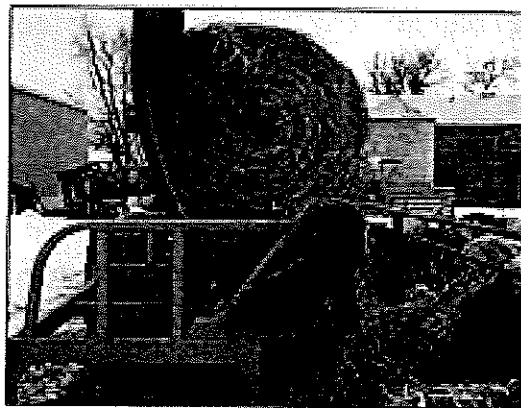


Fig. 4

Trouble Shooting

Round Bales

Problem: The rotors turn OK but the bale won't.

Suggested remedy: The platform is not high enough. The bale must be pushed against both feed rotors.

The bale may be resting on a flat spot. Raise and lower platform to get it to rotate.

Problem: Product jams between top feed rotor and wiper panel.

Suggested remedy: The wiper panel slot guides may need adjusting. Move guides closer to feed rotor spikes (1/16" clearance either sides.) See fig. 3

Square Bales

Problem: Several biscuits coming out at once.

Suggested remedy: The platform is too high. Lower platform. The product was baled when wet-reverse rotors 2 turns then forward again.

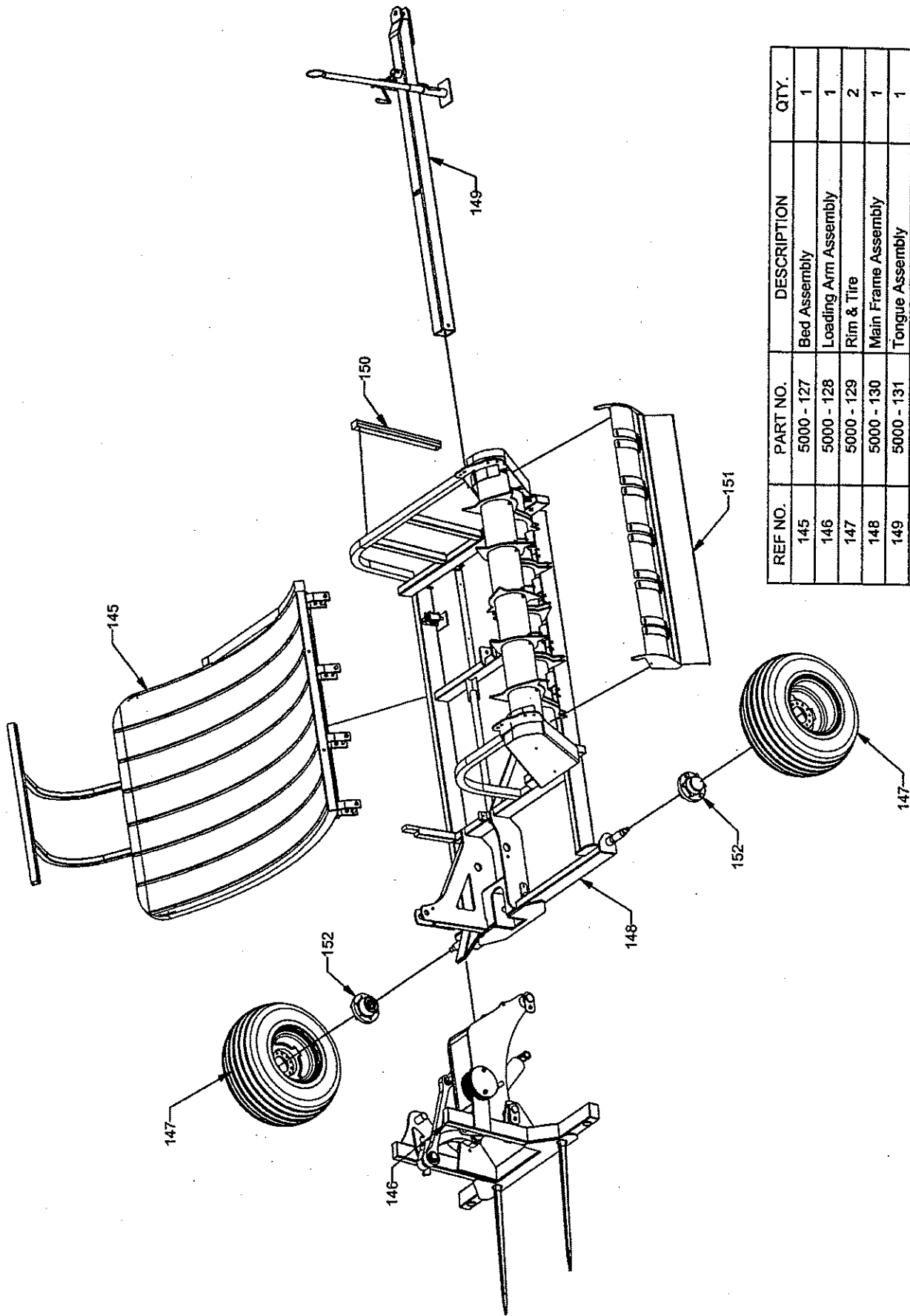
General

Problem: The bale is dropping too hard onto platform.

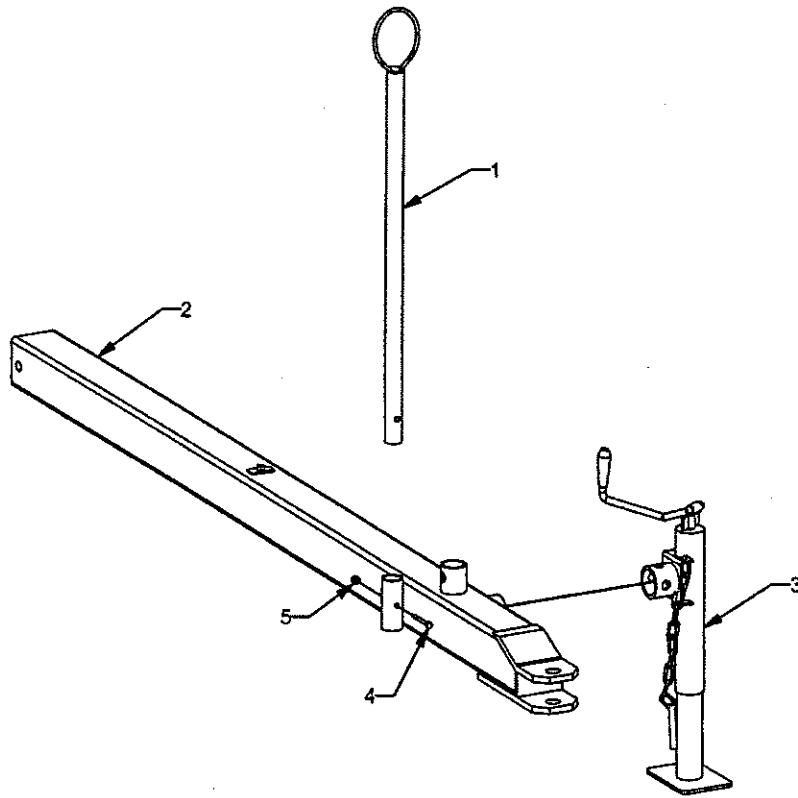
Suggested Remedy: Spear bale lower when loading.

Problem: Spear frame does not trip before the bale rests on the platform.

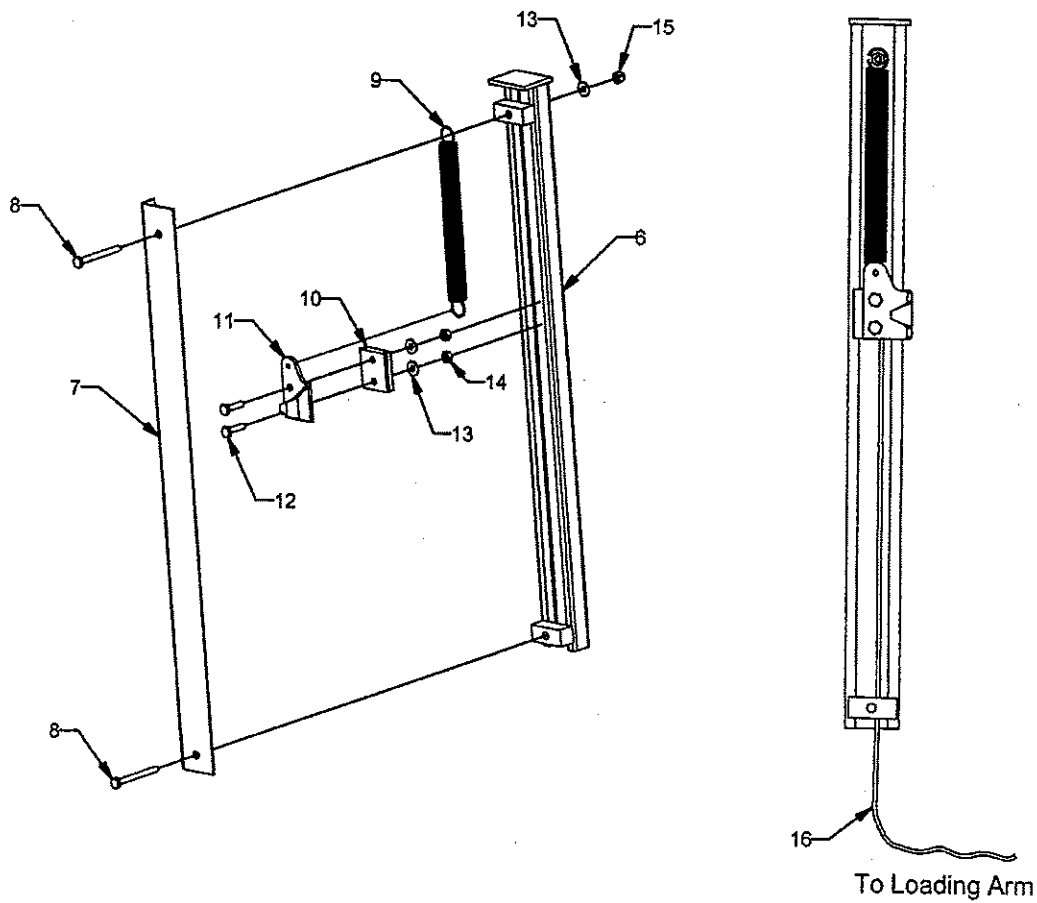
Suggested Remedy: Spear bale higher when loading.



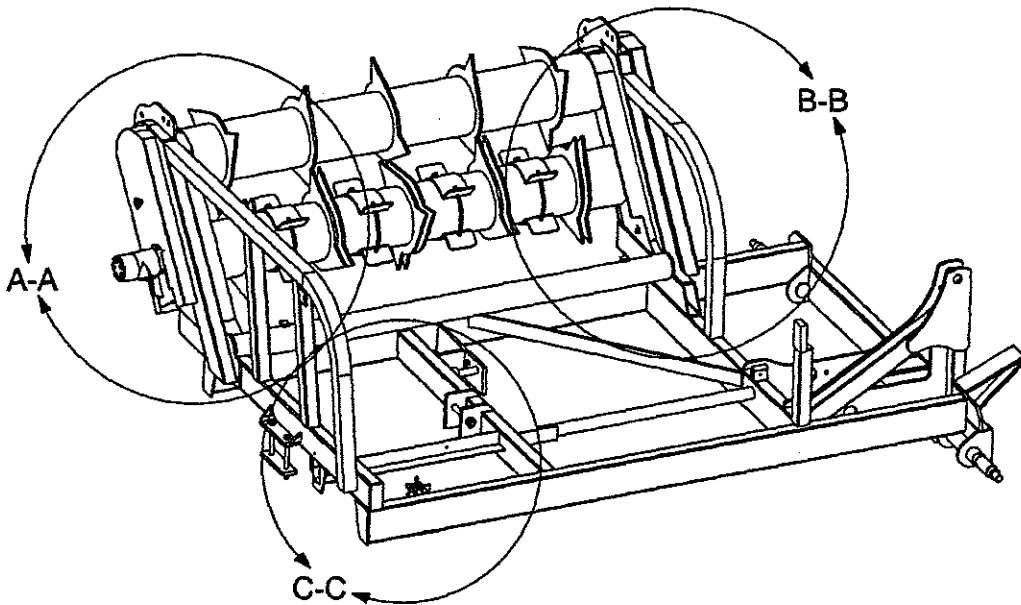
REF NO.	PART NO.	DESCRIPTION	QTY.
145	5000 - 127	Bed Assembly	1
146	5000 - 128	Loading Arm Assembly	1
147	5000 - 129	Rim & Tire	2
148	5000 - 130	Main Frame Assembly	1
149	5000 - 131	Tongue Assembly	1
150	5000 - 132	Indicator Assembly	1
151	5000 - 133	Wiper Assembly	1
152	5000 - 134	Hub Assembly	2



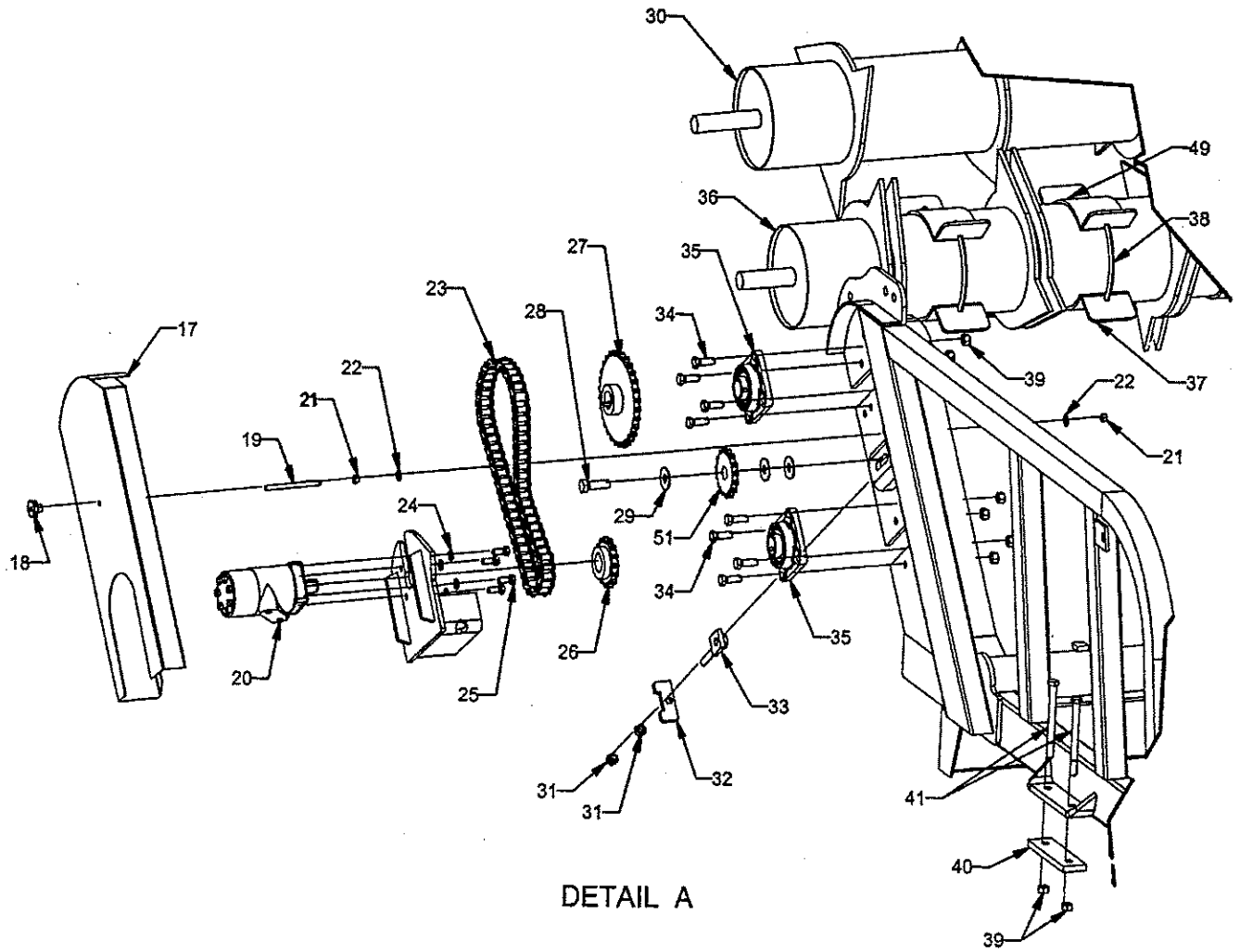
REF. NO.	PART NO.	DESCRIPTION	QTY.
1	5000 - 001	Hose Support	1
2	5000 - 002	Hitch	1
3	5000 - 003	Jack	1
4	5000 - 004	3/8" - 16 x 2 1/4" Bolt	1
5	5000 - 041	3/8" - 16 Lock Nut	1

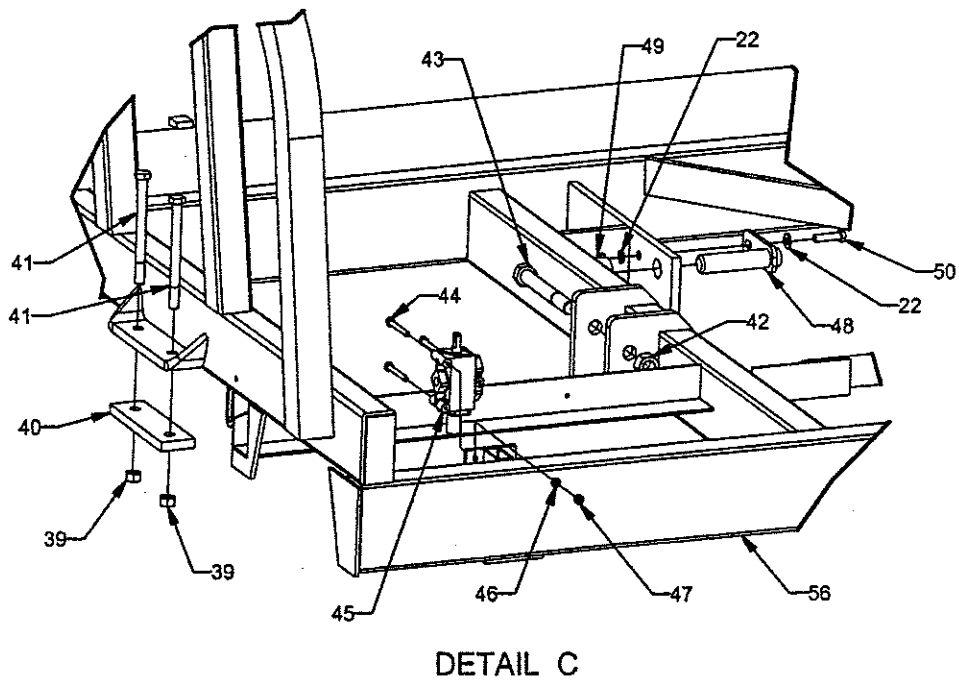
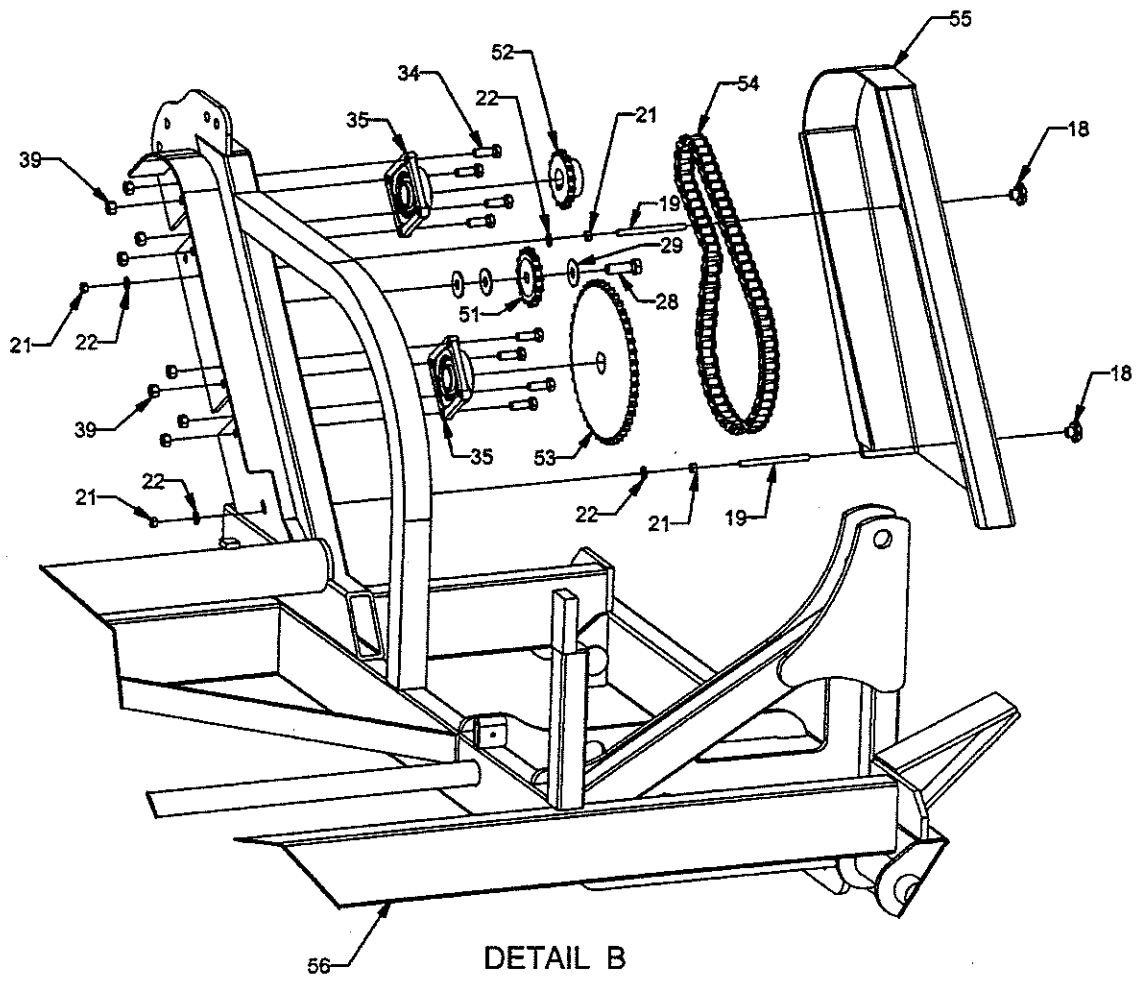


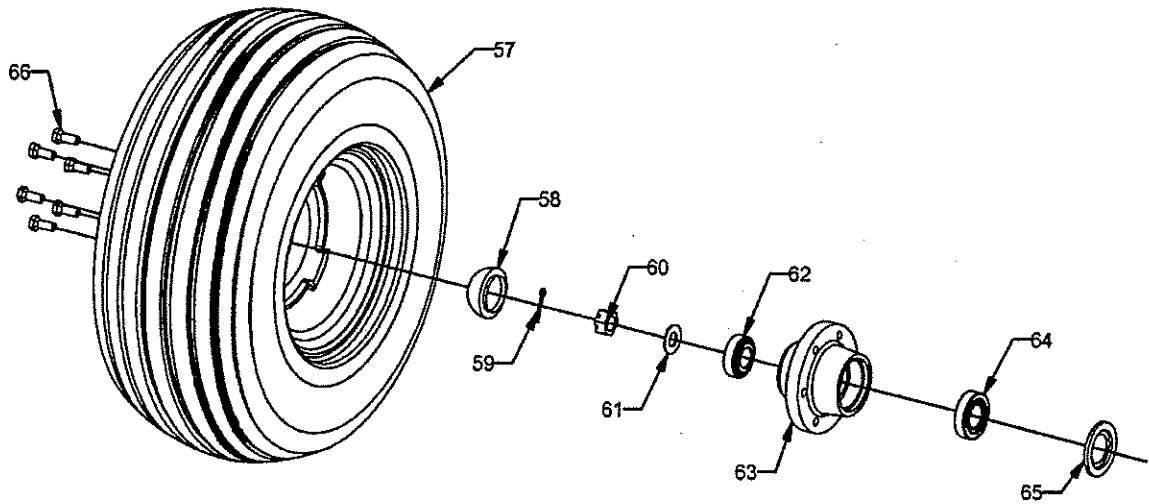
REF. NO.	PART NO.	DESCRIPTION	QTY.
6	5000 - 137	Back Indicator Shield	1
7	5000 - 138	Front Indicator Shield	1
8	5000 - 017	1/4" - 20 x 2 1/2" Bolt	2
9	5000 - 016	Spring	1
10	5000 - 139	Indicator Slider	1
11	5000 - 140	Indicator	1
12	5000 - 014	1/4" - 20 x 1" Bolt	2
13	5000 - 015	1/4" Lock Washer	3
14	5000 - 142	1/4" - 20 Nut	2
15	5000 - 013	1/4" - 20 Lock Nut	1
16	5000 - 143	Cable	1



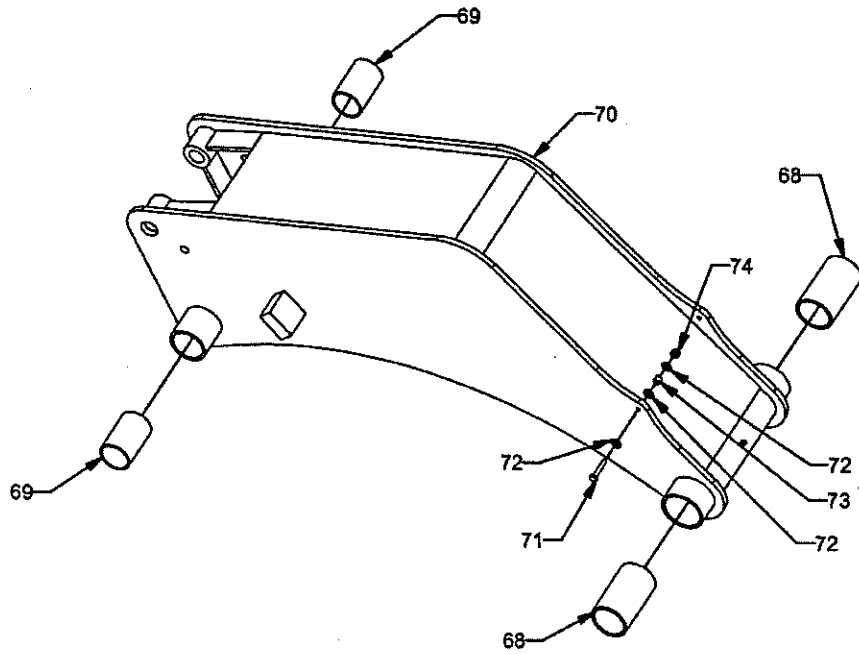
REF. NO.	PART NO.	DESCRIPTION	QTY.
17	5000 - 019	Front Chain Guard	1
18	5000 - 020	Shield Knob	3
19	5000 - 047	Shield Fastener	3
20	5000 - 048	Hydraulic Motor	1
21	5000 - 144	3/8" - 16 Nut	8
22	5000 - 042	3/8" Flat Washer	7
23	5000 - 046	Front Chain	1
24	5000 - 145	7/16" Lock Washer	4
25	5000 - 022	7/16" - 14 x 1" Bolt	4
26	5000 - 026	15-60 Chain Sprocket 1" Bore	1
27	5000 - 025	30-60 Chain Sprocket 1 3/8" Bore	1
28	5000 - 146	5/8" - 11 x 2 1/4" Bolt	2
29	5000 - 147	5/8" Flat Washer	6
30	5000 - 035	Top Beater	1
31	5000 - 148	1/2" - 13 Nut	4
32	5000 - 149	Chain Tightener Bracket	2
33	5000 - 150	Chain Tightener	2
34	5000 - 151	1/2" - 13 x 1 3/4" Bolt	16
35	5000 - 030	F205 Bearing	4
36	5000 - 034	Bottom Beater	1
37	5000 - 153	Bale Cleat	8
38	5000 - 154	Bale Cleat Threaded Rod	8
39	5000 - 036	1/2" - 13 Lock Nut	18
40	5000 - 155	Tongue Bracket	1
41	5000 - 037	1/2" - 13 x 6" Bolt	2
42	5000 - 038	3/4" - 10 Lock Nut	1
43	5000 - 039	3/4" - 10 x 6" Bolt	1
44	5000 - 156	1/4" - 20 x 2 1/4" Bolt	3
45	5000 - 045	Divertor Valve	1
46	5000 - 013	1/4" - 20 Lock Nut	3
47	5000 - 157	1/4" - 20 Nut	3
48	5000 - 043	Frame Bed Cylinder Pin	1
49	5000 - 041	3/8" - 16 Lock Nut	23
50	5000 - 040	3/8" - 16 x 1 1/2" Bolt	7
51	5000 - 027	15-60 5/8" Bore Idler Sprocket	2
52	5000 - 031	15-60 Chain Sprocket 1 3/8" Bore	1
53	5000 - 044	45-60 Chain Sprocket 1 3/8" Bore	1
54	5000 - 033	Rear Chain	1
55	5000 - 032	Rear Chain Guard	1
56	5000 - 158	Feeder Frame	1



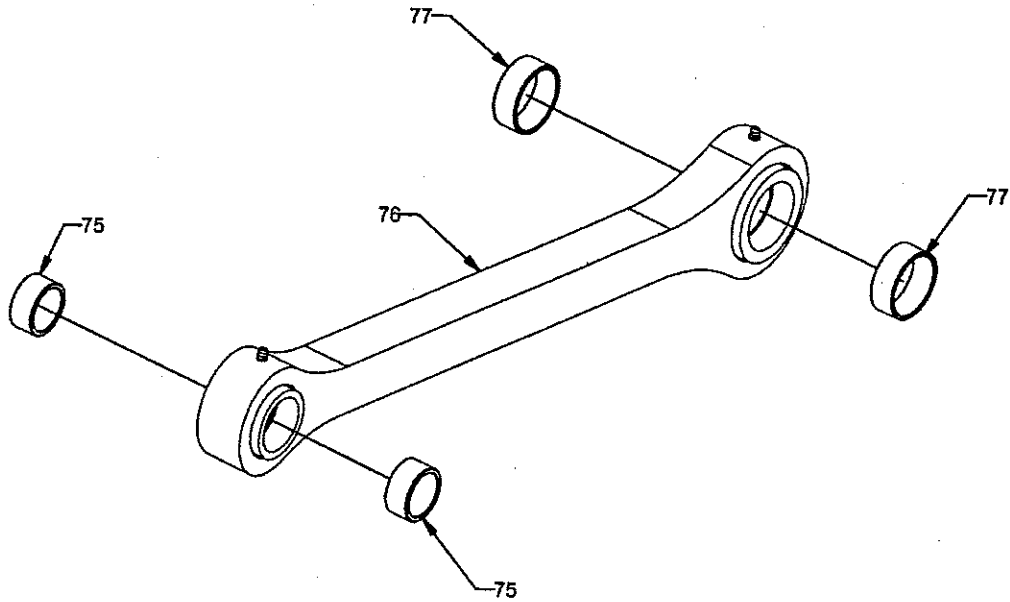




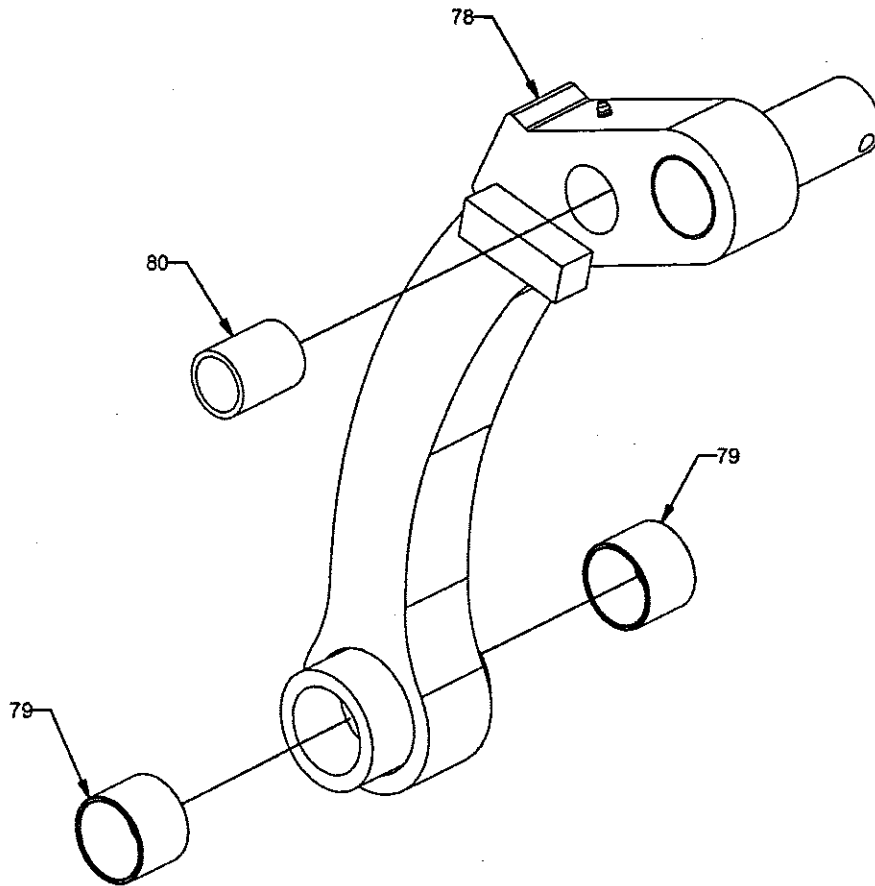
REF. NO.	PART NO.	DESCRIPTION	QTY.
57	5000 - 049	11L x 15 8 Ply Tire on 15x8x6 Wheel Optional 31-13.50x15x6 on 15x10x6 Wheel	2
58	5000 - 050	D6000 Dust Cap	2
59	5000 - 051	3/16" x 2 1/2" Cotter Pin	2
60	5000 - 052	1" - 14 Slotted Hex Nut	2
61	5000 - 053	1" Flat Washer	2
62	5000 - 054	25877 Bearing	2
63	5000 - 055	#6000 Hub	2
64	5000 - 056	25590 Bearing	2
65	5000 - 057	2" Oil Seal	2
66	5000 - 159	9/16" - 12 x 1 3/4" Wheel Bolt	12



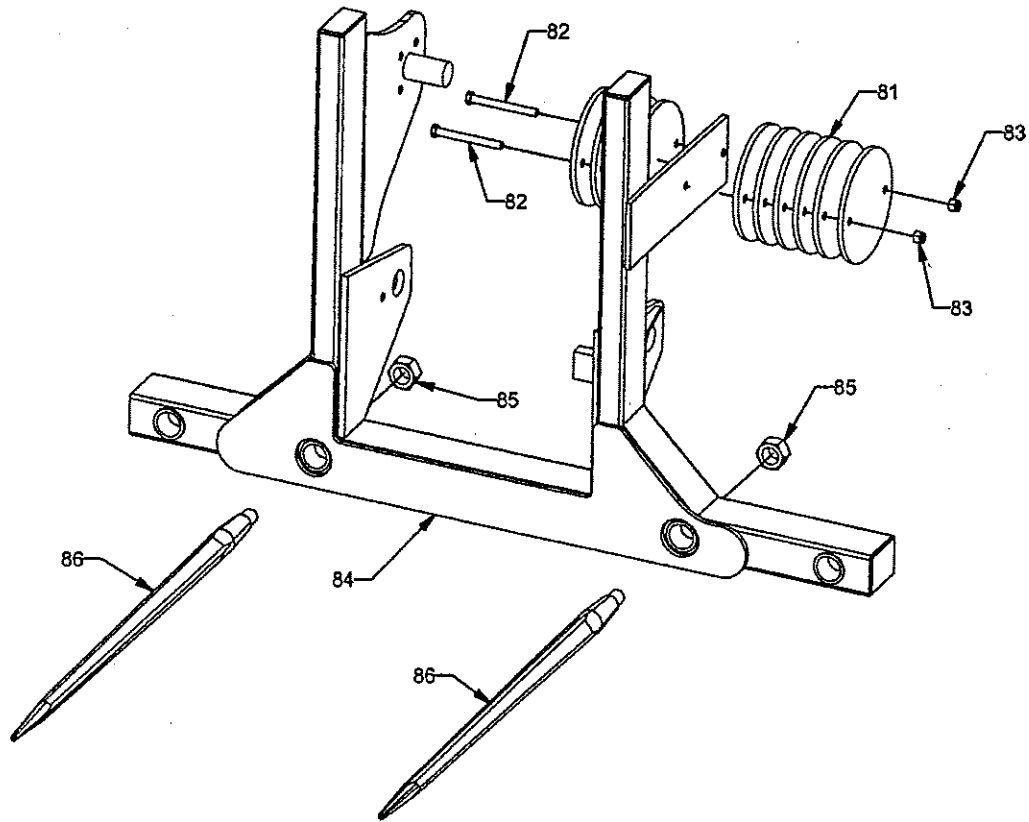
REF. NO.	PART NO.	DESCRIPTION	QTY.
68	5000 - 059	Arm Pivot Bushing	2
69	5000 - 060	Spear Frame Pivot Bushing	2
70	5000 - 062	Loading Arm	1
71	5000 - 160	1/4" - 20 x 1 1/2" Bolt	1
72	5000 - 161	1/4" Flat Washer	3
73	5000 - 162	Cable Spacer	1
74	5000 - 013	1/4" - 20 Lock Nut	1



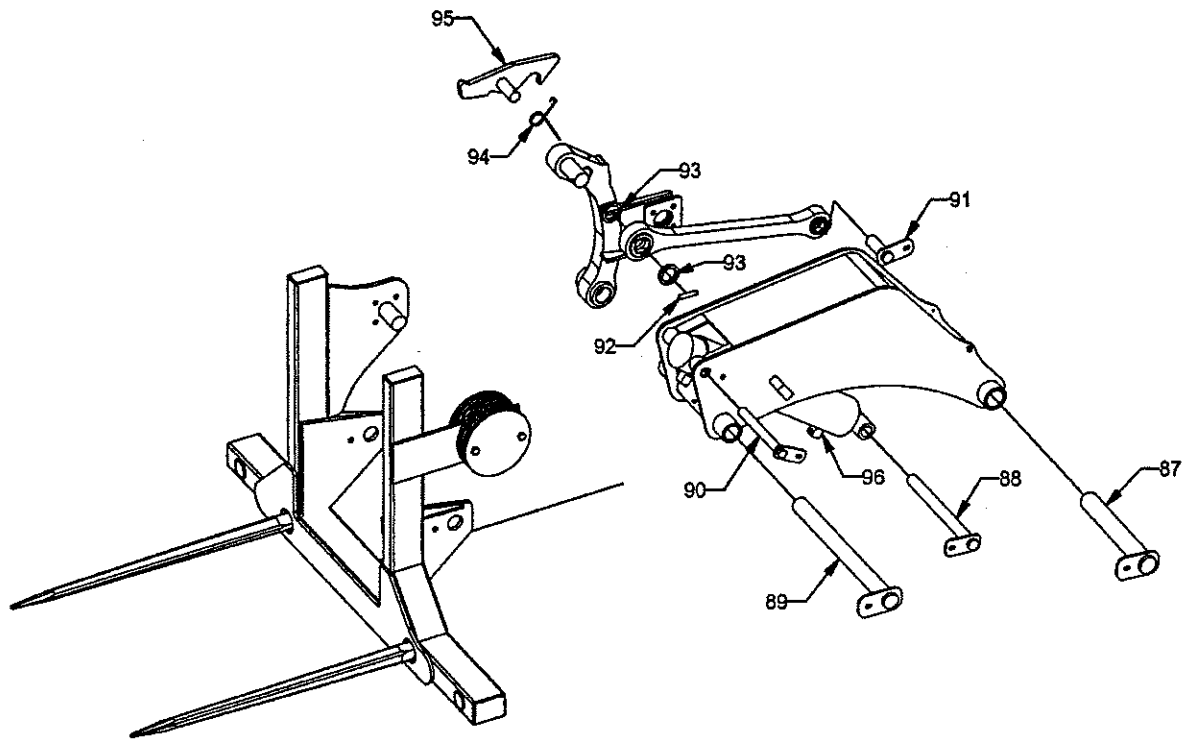
REF. NO.	PART NO.	DESCRIPTION	QTY.
75	5000 - 063	Small Loading Arm Bushing	2
76	5000 - 163	Top Loading Arm	1
77	5000 - 065	Large Loading Arm Bushing	2



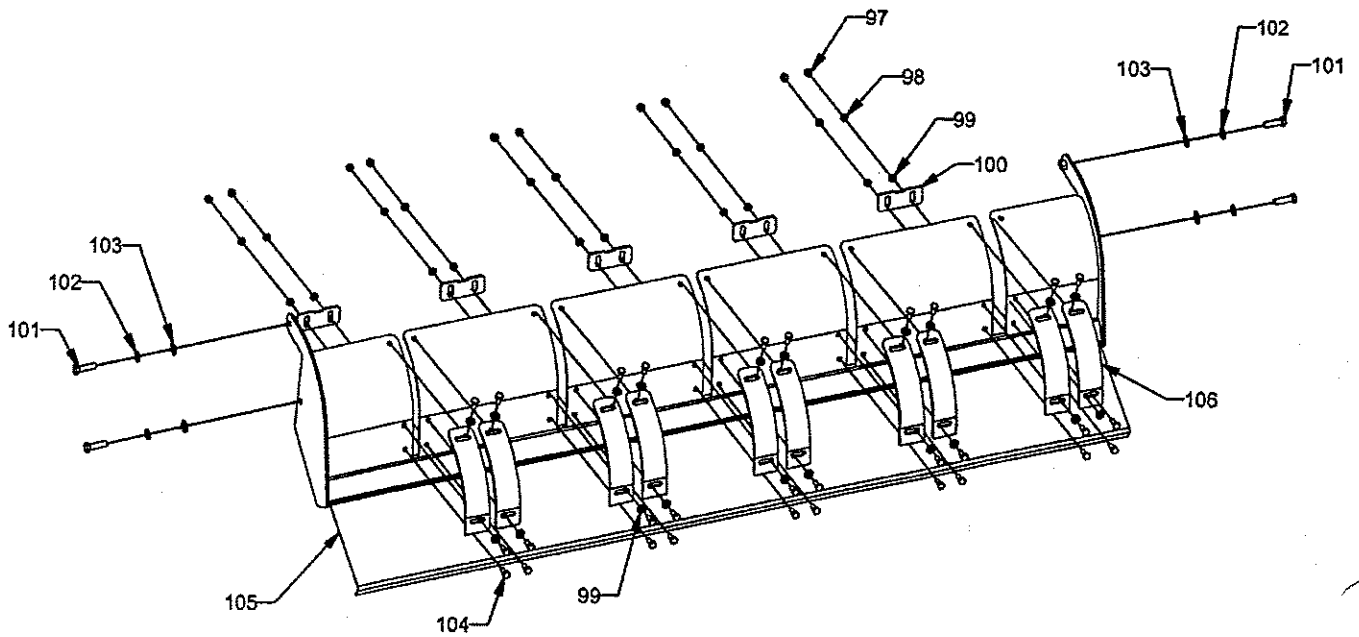
REF. NO.	PART NO.	DESCRIPTION	QTY.
78	5000 - 164	Vertical Loading Arm	1
79	5000 - 067	Vertical Loading Arm Pivot Bushing	2
80	5000 - 165	Latch Pivot Bushing	1



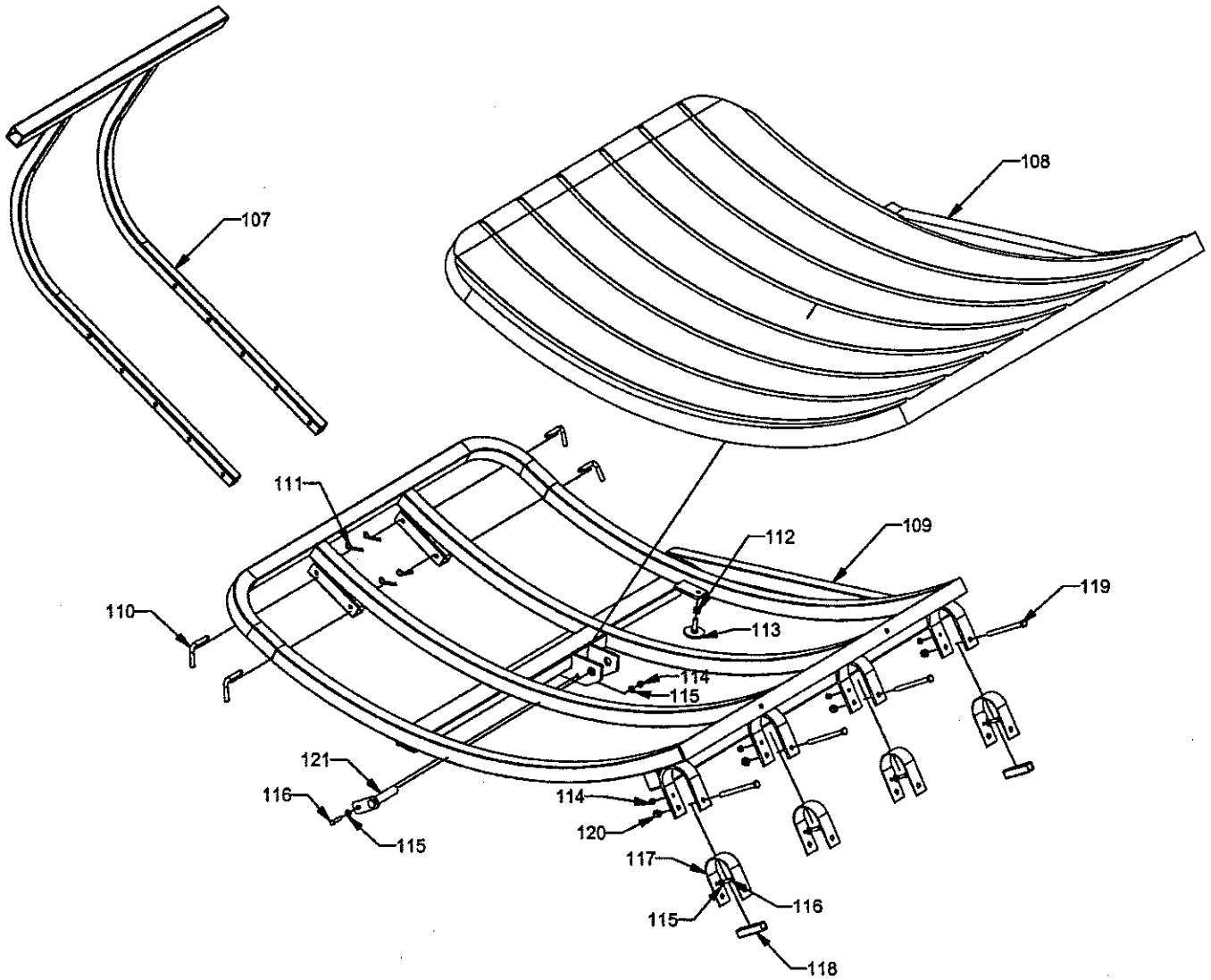
REF NO.	PART NO.	DESCRIPTION	QTY.
81	5000 - 068	Weight	10
82	5000 - 069	1/2" - 13 x 5" Bolt	2
83	5000 - 036	1/2" - 13 Lock Nut	2
84	5000 - 073	Rear Spear Frame	1
85	5000 - 072	M30 x 3.5 Nut	2
86	5000 - 071	32" Spear	2
	5000 - 135	39" Spear	2



REF. NO.	PART. NO.	DESCRIPTION	QTY.
87	5000 - 079	Loading Arm Pivot Pin	1
88	5000 - 075	Loading Cylinder Bottom Pin	1
89	5000 - 076	Spear Frame Pivot Pin	1
90	5000 - 077	Loading Cylinder Top Pin	1
91	5000 - 078	Top Loading Arm Pin	1
92	5000 - 166	7/16" x 2" Roll Pin	1
93	5000 - 074	Spacer	2
94	5000 - 081	Spring	1
95	5000 - 167	Latch	1
96	5000 - 061	Loading Cylinder	1

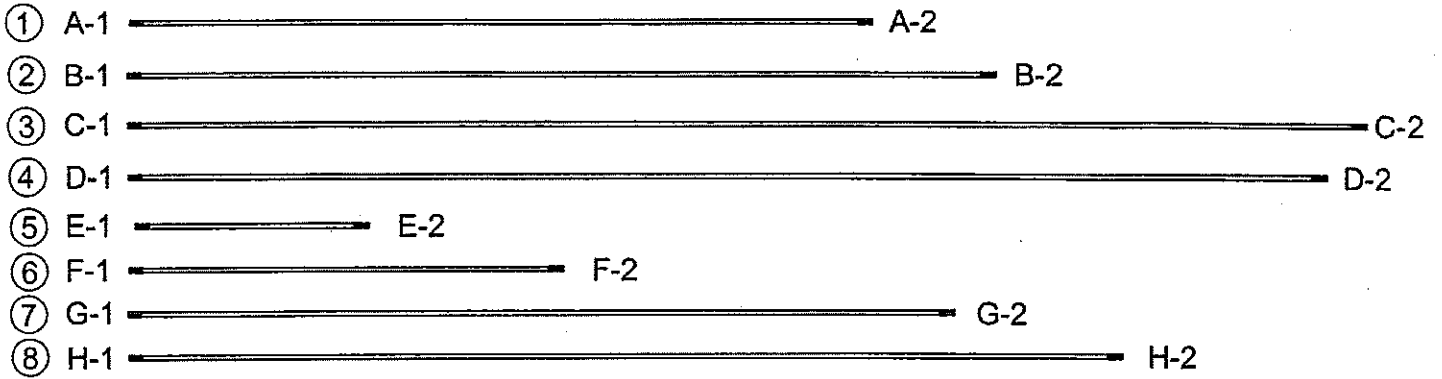


REF. NO.	PART NO.	DESCRIPTION	QTY.
97	5000 - 085	5/16" - 18 Nut	10
98	5000 - 084	5/16" Lock Washer	10
99	5000 - 083	5/16" Flat Washer	30
100	5000 - 086	Slot Bracket Guide	5
101	5000 - 168	7/16" - 14 x 1 1/2" Bolt	4
102	5000 - 145	7/16" Lock Washer	4
103	5000 - 169	7/16" Flat Washer	4
104	5000 - 170	5/16" - 18 x 3/4" Bolt	30
105	5000 - 088	Wiper	1
106	5000 - 171	Slot Opening Guide	10

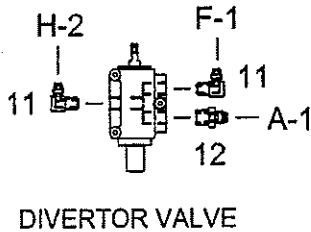
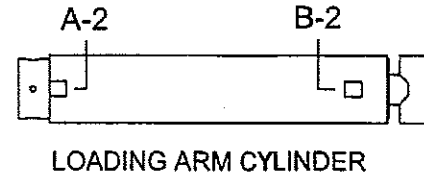
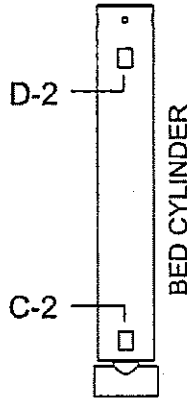
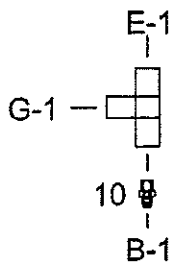
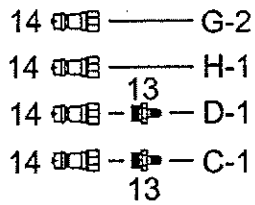
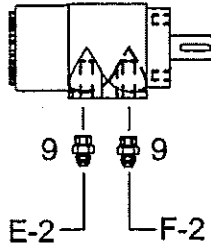


REF NO.	PART NO.	DESCRIPTION	QTY.
107	5000 - 094	Optional Square Bale Extension	1
108	5000 - 172	Bed Plastic	1
109	5000 - 093	Bed Frame	1
110	5000 - 173	Square Bale Extension Pin	4
111	5000 - 174	Dia. 11 Hitch Pin	4
112	5000 - 148	1/2" - 13 Nut	1
113	5000 - 092	Divertor Valve Actuator	1
114	5000 - 041	3/8" - 16 Lock Nut	5
115	5000 - 042	3/8" Flat Washer	6
116	5000 - 175	3/8" - 16 x 1 1/2" Bolt	5
117	5000 - 176	Bed Pivot Plastic	4
118	5000 - 091	Bed Pivot Bracket Spacer	2
119	5000 - 037	1/2" - 13 x 6" Bolt	4
120	5000 - 036	1/2" - 13 Lock Nut	4
121	5000 - 177	Bed Cylinder Pin	1

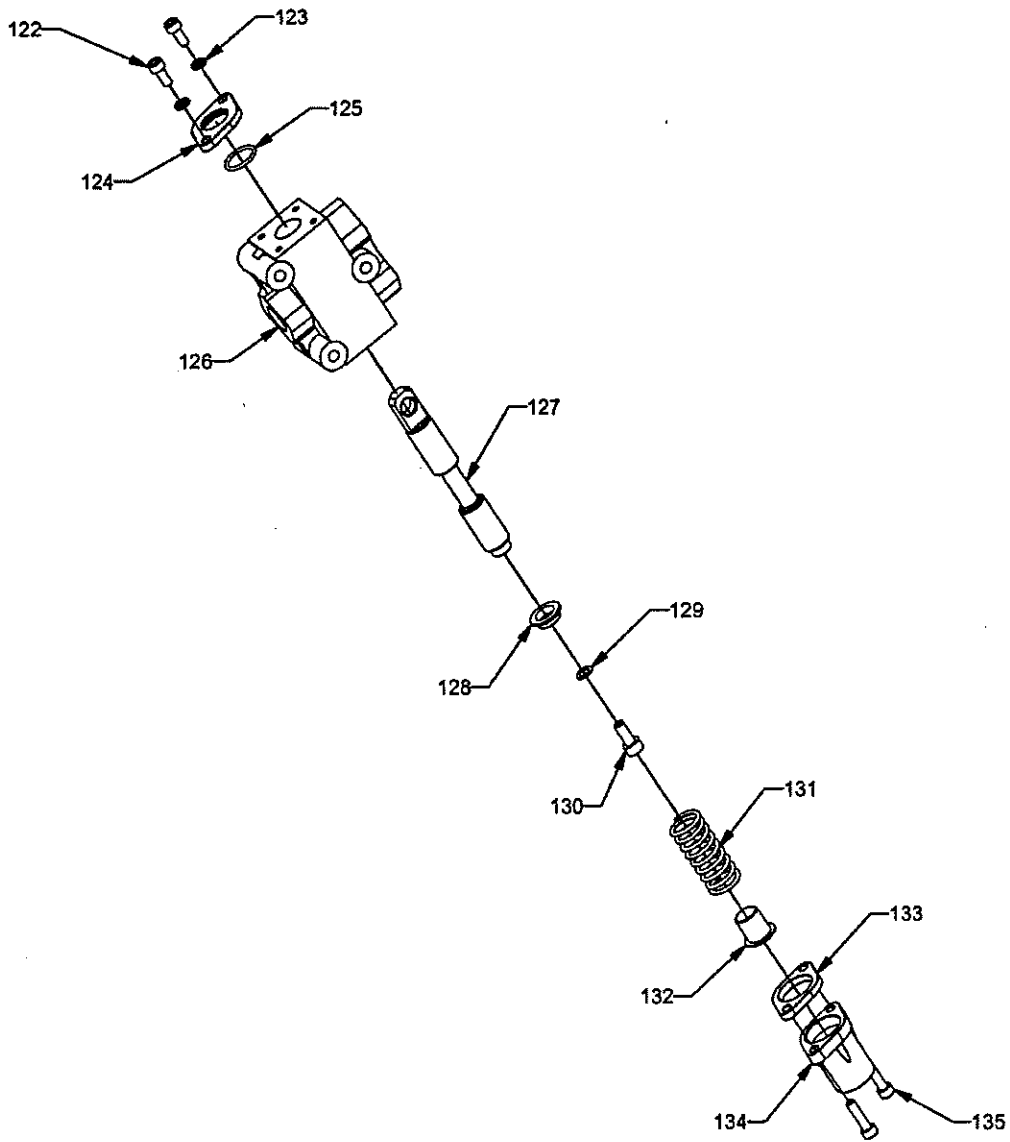
BALE FEEDER HYDRAULICS



HYDRAULIC MOTOR

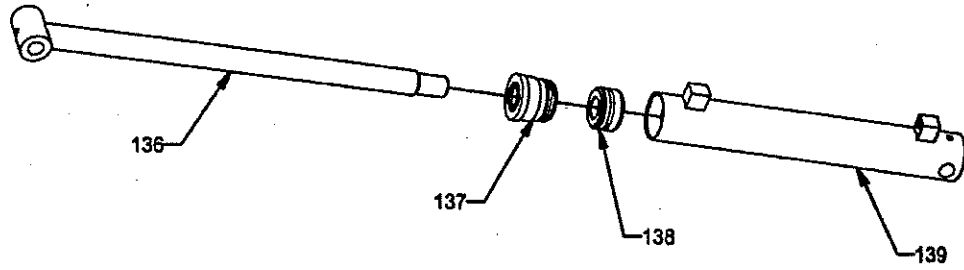


REF. NO.	PART NO.	DESCRIPTION	QTY
1	5000 - 096	4m3k-4mp-6fjx-111	1
2	5000 - 097	4m3k-4mp-6fjx-126	1
3	5000 - 098	4m3k-4mp-6fjx-174	1
4	5000 - 099	4m3k-4mp-6fjx-180	1
5	5000 - 100	6m3k-8fjx-8fjx-63	1
6	5000 - 101	6m3k-6mp-8fjx-34	1
7	5000 - 102	6m3k-6mp-8mp-120	1
8	5000 - 103	6m3k-8mp-8fjx-144	1
9	6400-8-10	#8 MJIC - #10 O-Ring Straight Adaptor	2
10	2404-6-6	#6 MJIC - #6 MJIC Straight Adaptor	1
11	6801-8-8	#8 MJIC - #8 O-Ring 90 Adaptor	2
12	6400-6-8	#6 MJIC - #8 O-Ring Straight Adaptor	1
13	2404-6-8	#6 MJIC - #8 NPT	2
14	MB1R12NPT	Pioneer Male Coupler	4

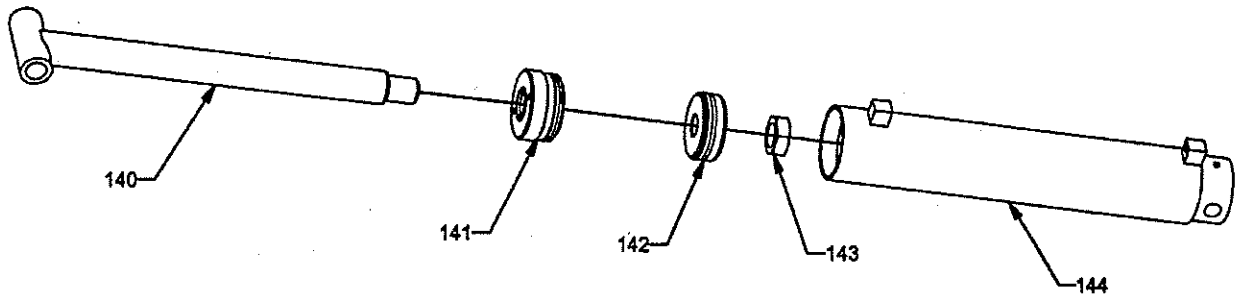


REF NO.	PART NO.	DESCRIPTION	QTY.
122	5000 - 104	3/16" x 1/2" Hex Head Cap Screw	2
123	5000 - 105	3/16" Lock Washer	2
124	5000 - 106	Top Flange	1
125	5000 - 107	Rubber Gasket	1
126	5000 - 108	Housing	1
127	5000 - 109	Plunger	1
128	5000 - 110	Top Spring Mount	1
129	5000 - 111	1/4" Flat Washer	1
130	5000 - 112	1/4" x 1/2" Hex Head Cap Screw	1
131	5000 - 113	Spring	1
132	5000 - 114	Bottom Spring Mount	1
133	5000 - 115	Bottom Flange	1
134	5000 - 116	Spring Cap	1
135	5000 - 117	3/16" x 3/4" Hex Head Cap Screw	2

BED CYLINDER



LOADING ARM CYLINDER



REF NO.	PART NO.	DESCRIPTION	QTY.
136	5000 - 118	4" x 14" Stroke Rod	1
137	5000 - 119	2 1/2" Cylinder End Seal	1
138	5000 - 120	2 1/2" Cylinder Inside Seal	1
139	5000 - 121	2 1/2" x 14" Stroke Body	1
140	5000 - 122	4" x 19" Stroke Rod	1
141	5000 - 123	4" Cylinder End Seal	1
142	5000 - 124	4" Cylinder Inside Seal	1
143	5000 - 125	1 1/2" - 6 Jam Hex Nut	1
144	5000 - 126	4" x 19" Stroke Body	1



Agway Manufacturing Inc.
Agricultural & Industrial Equipment

2372 Floradale Rd., RR 1, Elmira
ON N3B 2Z1 Canada
Phone: 519-669-0387
Fax: 519-669-0597
Email: sales@agwaymfg.com

© 2004 - ALL RIGHTS RESERVED