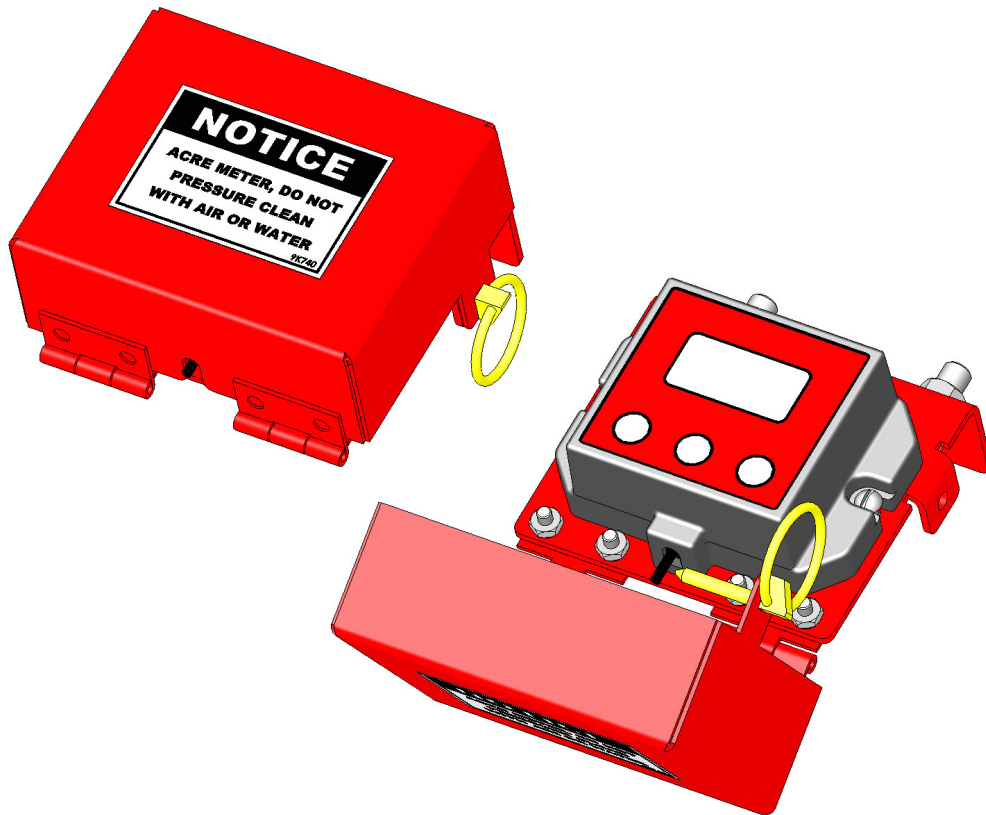




Electronic Acre Meter Kit Operator's & Parts Manual



LANDOLL CORPORATION

1900 North Street
Marysville, Kansas 66508
(785) 562-5381

800-428-5655 ~ WWW.LANDOLL.COM

1 Acre Meter

Understanding Safety Statements	1-1
Settings for Loup Acre Meters After 05/15/2012	1-2
Field Acres	1-2
Total Acres	1-2
Pulses Per 400 Feet	1-2
Width	1-2
Password	1-2
Changing The Password	1-3
Quick-start Settings for Brillion or Ivansco Acre Meters Prior to 05/15/2012	1-3
To Program Meter	1-3
To Enter Password	1-3
To Disable Password	1-3
Battery Replacement for all Acre Meters	1-3
Electronic Acre Meters Parts List	1-7
Acre Meter Brackets	1-10
Electronic Acre Meter Installations	1-11
Kit 5K275 Installation	1-11
Kit 5K745 Installation	1-13
Kit 6K036 Installation	1-15
Kit 7K250 Installation	1-17
Kit 3P099 Installation	1-19

Instructions for Ordering Parts

**** Repair parts must be ordered through an authorized dealer ****

DEALER INSTRUCTIONS FOR ORDERING PARTS FROM LANDOLL PARTS DISTRIBUTION CENTER

PHONE #: 800-423-4320 OR 785-562-5381

FAX #: 888-527-3909

ORDER ONLINE: Dealer.landoll.com

Understanding Safety Statements

- Examine safety decals and be sure you have the correct safety decals for your machine. Order replacement decals through your Brillion dealer.

NOTICE

Special notice - read and thoroughly understand.



CAUTION

Proceed with caution. Failure to heed caution may cause injury to person or damage product.



WARNING

Proceed with caution. Failure to heed warning will cause injury to person or damage product.



DANGER

Proceed with extreme caution. Failure to heed notice will cause injury or death to person and/or damage product.

NOTE

You should read and understand the information contained in this manual and on the machine decals before you attempt to operate or maintain this equipment.



DANGER

- Keep Riders Off of Machinery
Do not allow anyone to ride on tractor or machine. Riders could be struck by foreign objects or thrown from the machine.
- Never allow children to operate equipment.
- Keep bystanders away from machine during operation.



WARNING

Do Not Pressure Clean With Air Or Water.

Settings for Loup Acre Meters After 05/15/2012

The battery operated acre counter operates in one of two modes. In sleep mode, the display is blank, and the counter is accumulating acres. Sleep mode will be entered if a button is not pressed for 20 seconds. In entry mode, the display is on, and the operator can enter values. To get into entry mode, press the ***/FUNC** button. If you continue to press the ***/FUNC** button, the acre counter will cycle through the functions that it can perform. The LEDs above the display indicate which function is selected.

The available functions are:

Field Acres, Total Acres, Pulses per 400 ft, Width, Password and Low Battery

Field Acres

Press the ***/FUNC** button until the "**FIELD**" LED is lit. The digits indicate the acres covered since the field acre counter was cleared.

To clear the field acre count, press the **UP** and **DOWN** buttons simultaneously for two seconds. If a password has been entered, you will not be able to clear the total acre count. Field acres will count in tenths of an acre up to 9999.9 acres.

Total Acres

Press the ***/FUNC** button until the "**FIELD**" and "**TOTAL**" LEDs are lit. The digits indicate the acres covered since the total acre counter was cleared.

To clear the total acre count, press and hold the **UP** and **DOWN** buttons for two seconds. If a password has been entered, you will not be able to clear the total acre count. Total acres will count from .1 to 99999 acres.

Pulses Per 400 Feet

Press the ***/FUNC** button until the "**PULSES**" LED is lit. The number in the display indicates how many pulses are generated for every 400 feet driven. There are two methods to enter the pulses per 400 feet:

If you know the number, select it using the **UP** and **DOWN** buttons. When you press the ***/FUNC** button, the Acre Counter will accept the number in the display as the new pulses per 400 feet. **See Table 1-1.**

If you do not know the pulses per mile, press and hold the **UP** and **DOWN** buttons until the "0000" appears in the display. The "**PULSES**" LED will blink. The acre counter is now counting shaft rotations. Enter the cab and drive 400 feet. Press the ***/FUNC** button to wake up the acre counter. The "**PULSES**" LED will again blink. The number displayed is the pulses per 400 feet. Press the ***/FUNC** button to accept the setting. The "**PULSES**" LED will stop blinking and remain on.

If a password is set, you will not be able to adjust the pulses per mile.

Width

Press the ***/FUNC** button until the "**WIDTH**" LED is lit. The number displayed is the length of your implement in feet.

To adjust the width, press the **UP** and **DOWN** buttons. If a password has been entered, you will not be able to adjust the width.

The length can be adjusted from .1 to 99.9 feet, in tenths of a foot.

Password

The password function allows you to protect the total acre count, pulses per 400 feet, and width settings with a password. This stops anyone from accidentally changing those settings. When the acre counter is shipped, the password is disabled. You can modify the pulses per 400 feet and implement width at any time.

Press the ***/FUNC** button until the "**PASS**" LED is lit. The digits will display the word "**Ent**" or "**dis**".

If the display shows "**dis**": The password is disabled. The total acre count, pulses/400 ft, width, and password settings can be adjusted using the **UP** and **DOWN** buttons. The password can also be changed using the **UP** and **DOWN** buttons.

If the display shows "**Ent**": You must enter your password using the **UP** and **DOWN** buttons. When your password is displayed, press the ***/FUNC** button to test the password. If the password is correct, you will be able to change the acre counter settings. The password will be viewable until the acre counter powers down. When the acre counter is powered up again, you will have to re-enter the password to change settings.

If the password is not correct, you will not be able to change the acre counter settings. When the "**PASS**" function is selected again, "**Ent**" will appear in the display.

Changing The Password

Select a new password using the **UP** and **DOWN** buttons. Press the ***/FUNC** button until the word “**SET**” appears in the display. Release the ***/FUNC** button. The number in the display is your new pass code. Make sure you record this number. Press and hold the ***/FUNC** button until the word “**dis**” appears in the display.

If the password is forgotten, it can be disabled by removing the batteries. The password is intended for rental units. It is recommended that a seal be affixed to the rear plate of the acre counter to determine if the settings have been tampered with.

Quick-start Settings for Brillion or Ivansco Acre Meters Prior to 05/15/2012

- When the meter is set to “count” mode in pulses screen, meter will register only magnetic wheel revolutions.
- The meter must be in sleep mode (blank screen) to calculate acres or to count pulses.
- The count screen must have a value other than zero (0000) to scroll to other modes or screens.
- To reset the FIELD ACRES screen to zero (0000), press the up and down buttons simultaneously.

To Program Meter

1. Press the function button to scroll to pulses screen.
2. Enter the number of pulses using the up or down buttons for the model listed in the chart. **See Table 1-1.**
3. Press the function button to set the pulses. (If screen goes blank before you press the function button, repeat steps 1 and 2).
4. Press the function button to scroll to the width screen.
5. Enter the width of seeder using the up or down buttons for the model listed in the chart. **See Table 1-2.**
6. Press the function button to set the width. (If screen goes blank before you press the function button, repeat steps 4 and 5).
7. Press the function to scroll through the screens to check that the correct pulses and width have been entered.

To Enter Password

1. Press the function button to scroll to password screen.

2. Pick a numeric password and enter it by using the up or down buttons, until your password is displayed.
3. Press the function button to set password; screen will show “(set)”. Record number - it is required if you decide to disable password.
4. Let screen go blank - password is now entered.
5. Press the function button to scroll to the password screen it will show (ent). If the screen does not show (ent), repeat steps 2, 3 and 4.

To Disable Password

1. Press the function button to scroll to the password screen it will show (ent).
2. Use up or down button to enter password (number).
3. Press the function button to scroll around to pass screen again. Number entered in step 2 will appear.
4. Press up or down button to enter 0.
5. Press the function button; (dis) will appear. Password is now disabled.

Battery Replacement for all Acre Meters

The battery operated acre counter uses 3 AA batteries. The batteries should last between 5 and 10 years. The acre counter will last much longer than that. Eventually, you will have to replace the batteries. The “**BATT**” LED will light when the batteries require replacement. Remove the acre counter from the implement and undo the 4 screws on the back of the case. This will separate the housing from the rear plate. Replace the batteries with 3 high quality AA alkaline batteries.

This unit is dust and splash resistant, under no circumstances should this unit be submerged in any conductive, corrosive, or flammable liquid.

ACRE METER

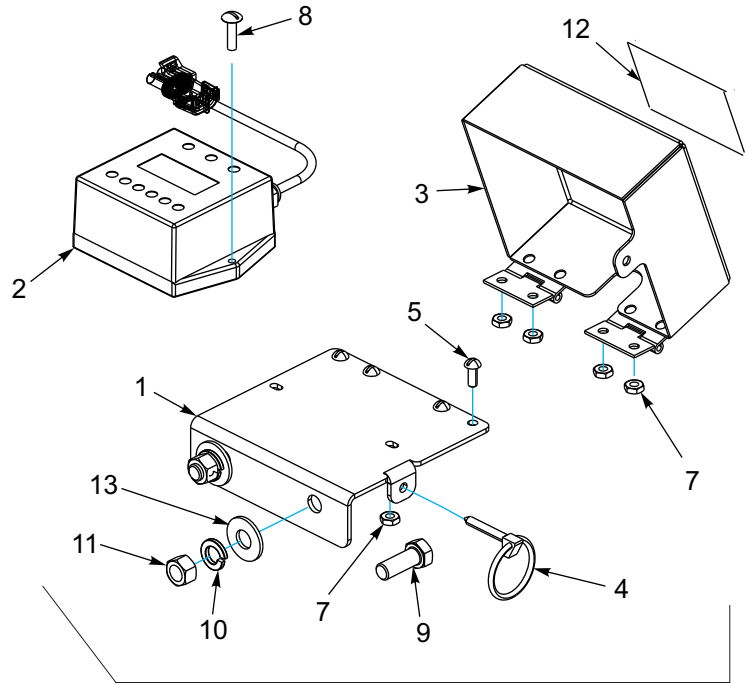
Table 1-1: Acre Meter Settings (After 05/15/2012)

MODEL				PULSES	WIDTH
SSP T604				22	5.0
SSP4	SS4			44	4.0
SSP5	SS5			44	5.0
SSP6	SS6			58	6.0
SSP8	SS8			58	8.0
SSP10	SS10			58	10.0
SSP12	SS12			58	12.0
SSP108	SS108			58	8.0
SSP110	SS110			58	10.0
SSP112	SS112			58	12.0
SSP208	SSP2081	SS208	SS2081	58	8.0
SSP210	SSP2101	SS210	SS2101	58	10.0
SSP212	SSP2121	SS212	SS2121	58	12.0
SSP308		SS308		29	8.0
SSP310		SS310		29	10.0
SSP312		SS312		29	12.0
SLP8		SL8		314	8.0
SLP10		SL10		314	10.0
SLP12		SL12		314	12.0
SLP204		SLP2041		128	4.0
SLP206		SLP2061		128	6.0
SLP304		SLP3041		64	4.0
SLP306		SLP3061		64	6.0
LSP5				128	5.0
LSP6				128	6.0
LSS6				128	6.0
SLP208	SLP2081	SL208	SL2081	116	8.0
SLP210	SLP2101	SL210	SL2101	116	10.0
SLP212	SLP2121	SL212	SL2121	116	12.0
SLP308	SLP3081	SL308	SL3081	58	8.0
SLP310	SLP3101	SL310	SL3101	58	10.0
SLP312	SLP3121	SL312	SL3121	58	12.0
BOS4F1	BOS4S1	BOS6F1	BOS6S1	45	4.0
BOSB4F1	BOSB4S12	BOSB6F1	BOSB6S1	45	6.0
BPS6	BPSB6			51	6.0
GLP643		SSLP643		69	5.3
X19-27 w/Notched Ductile Wheel	XL28-36 w/Notched Ductile Wheel	XXL38-46 w/Notched Ductile Wheel		90	Per Pulverizer Model

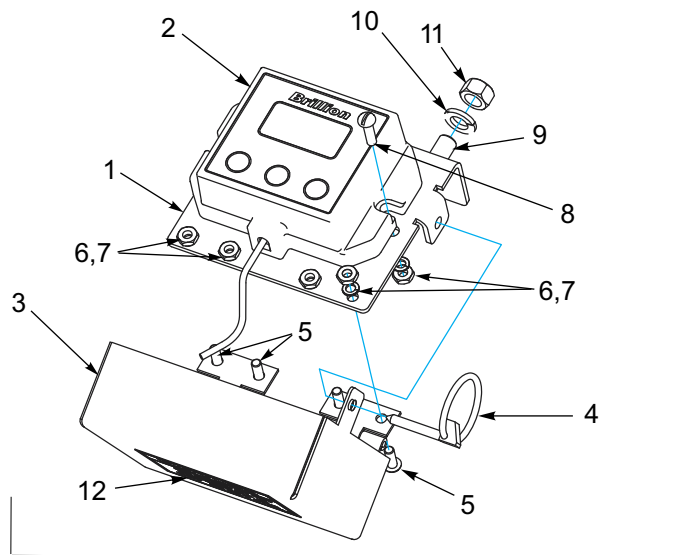
Table 1-2: Acre Meter Settings (Prior to 05/14/2012)

MODEL				Pulses	Width
SSP T604				293	5
SSP4		SS4		578	4
SSP5				578	5
SSP6		SS6		578	6
SSP8		SS8		764	8
SSP10		SS10		764	10
SSP12		SS12		764	12
SSP108		SS108		760	8
SSP110		SS110		760	10
SSP112		SS112		760	12
SSP208	SSP2081	SS208	SS2081	764	8
SSP210	SSP2101	SS210	SS2101	764	10
SSP212	SSP2121	SS212	SS2121	764	12
SSP308		SS308		382	8
SSP310		SS310		382	10
SSP312		SS312		382	12
SLP8		SL8		4147	8
SLP10		SL10		4147	10
SLP12		SL12		4147	12
SLP204	SLP2041			1690	4
SLP206	SLP2061			1690	6
SLP304	SLP3041			845	4
SLP306	SLP3061			845	6
LSP5				1690	5
LSP6				1690	6
LSS6				1690	6
SLP208	SLP2081	SL208	SL2081	1528	8
SLP210	SLP2101	SL210	SL2101	1528	10
SLP212	SLP2121	SL212	SL2121	1528	12
SLP308	SLP3081	SL308	SL3081	764	8
SLP310	SLP3101	SL310	SL3101	764	10
SLP312	SLP3121	SL312	SL3121	764	12
BOS4F1	BOS4S1	BOS6F1	BOS6S1	600	4
BOSB4F1	BOSB4S1	BOSB6F1	BOSB6S1	600	6
BPS6	BPSB6			679	6
GLP643		SSLP643		917	5

Note: If you replace a meter supplied prior to 5/15/2012 with a new Loup meter you will need to change out the protective box items 1 and 3 due to the new meter being physically larger.



After 05/12/2012



Prior to 05/12/2012

Figure 1-1: Electronic Acre Meters

Electronic Acre Meters

ITEM	PART NUMBER	DESCRIPTION	QTY.
	5K310	ACRE METER ASSEMBLY (INCLUDES ITEMS 1-13)	
1	170943	MOUNT-ACRE METER (05/15/2012 AND AFTER)	1
1	9K739	BRACKET, ACRE METER (05/14/2012 AND PRIOR)	1
2	170948	CONSOLE, ELECTRONIC ACRE (05/15/2012 AND AFTER)	1
2	153861	CONSOLE, ELECTRONIC ACRE (05/14/2012 AND PRIOR)	1
3	170946	COVER-ACRE METER, WELDMENT (05/15/2012 AND AFTER)	1
3	9K741	COVER, ACRE METER WLD (05/14/2012 AND PRIOR)	1
4	5D129	KLIK-PIN	1
5	1C213	STOVE BOLT #10-24X1/2 RD HD ZP	4
6	1-861-010034-07	WASHER,LKG,HLCL SPR, NO 10 (05/14/2012 AND PRIOR)	6
7	1-512-010007-03	NUT, HEX 10-24	6
8	1-656-010003051	SCREW,RH HD MACH 10-24X3/4	2
9	1-654-010051-05	SCREW,HEX CAP 3/8-16UNCX1 GR5	2
10	1-861-010034-11	WASHER, LKG HLCL SPR, 3/8	2
11	1-512-010007-07	NUT, HEX 3/8-16 ZP	2
12	9K740	DECAL, ACRE METER	1
13	1-861-010032-11	WASHER, FLAT 3/8 W ZP/CD (05/15/2012 AND AFTER)	2
14	184482	BRACKET, ACRE METER	1

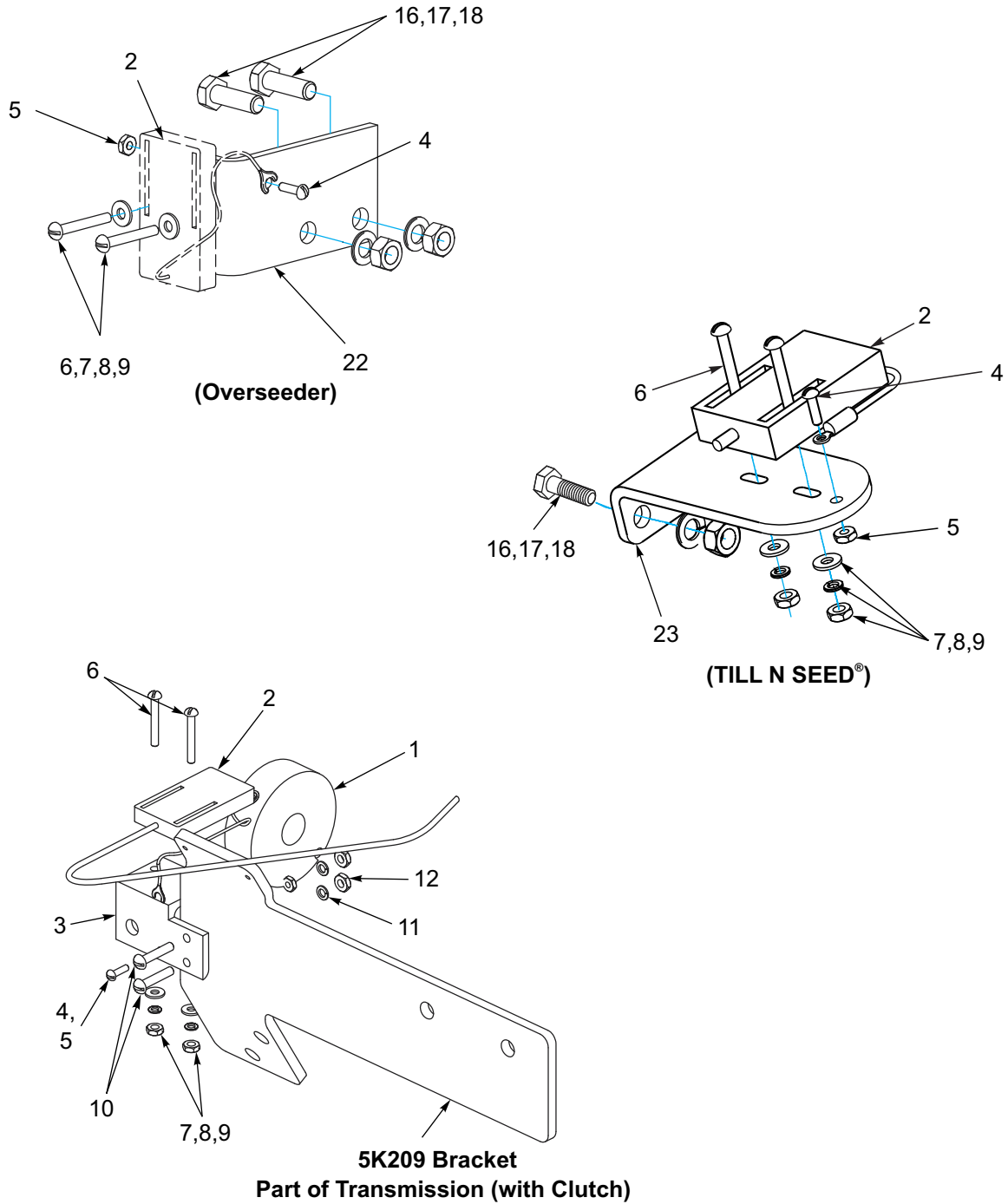
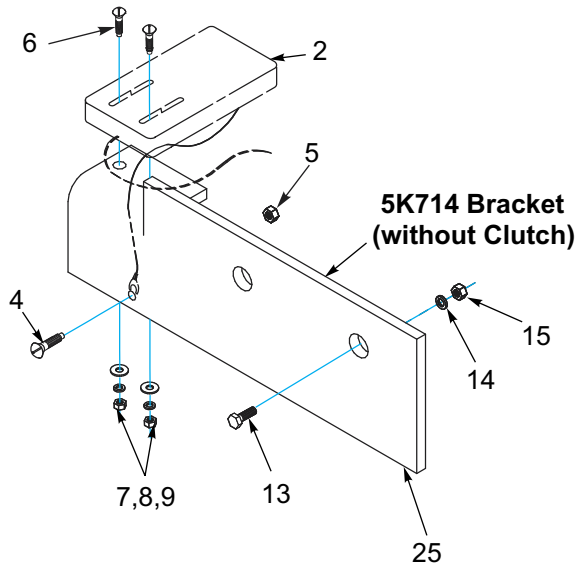


Figure 1-2: Acre Meter Brackets (1 of 2)



(4', 5', 6' Seeders)

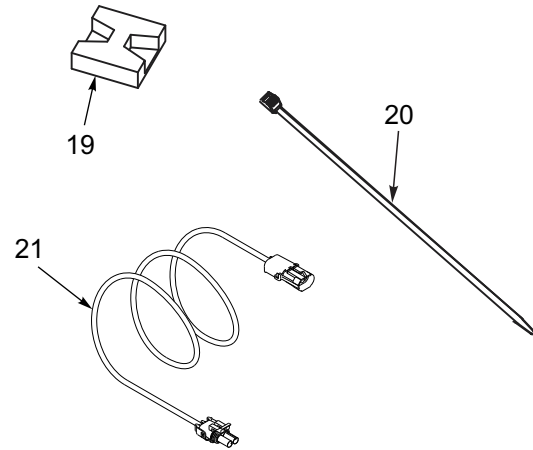
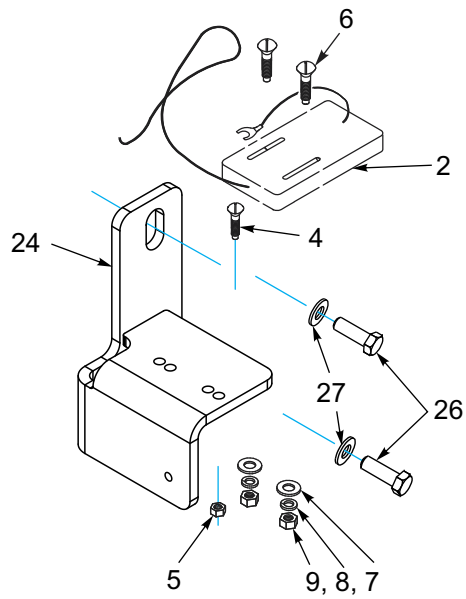


Figure 1-3: Acre Meter Brackets (2 of 2)

ACRE METER

Acre Meter Brackets

ITEM	PART NUMBER	DESCRIPTION	QTY.
1	5K277	MAGNET WHEEL ASSY	1
2	153862	SWITCH ASSY, ELECTRONIC ACRE (PICKUP SWITCH)	1
3	5K332	MOUNTING CLIP	1
4	2D045	SCREW RD HD MACH 6-32XNCX1/2	1
5	5K266	NUT, HEX (#6-32, ZP)	1
6	5K262	ROUND HEAD MACHINE SCREW (#8-32 X 1-1/4, ZP)	2
7	1-861-010032-02	WASHER, FL #8 ZP/CD	2
8	118-5098	#8 LOCK WASHER ZP	2
9	1-512-010007-02	NUT, HEX 8-32 ZP	2
10	1-656-010003051	SCREW,RH HD MACH 10-24X3/4	2
11	1-861-010034-07	WASHER, LKG,HLCL SPR, NO 10	6
12	1-512-010007-03	NUT, HEX 10-24	6
13	1-654-010051-06	SCREW, HEX CAP 3/8-16X1-1/4	2
14	1-861-010034-11	WASHER, LKG HLCL SPR, 3/8	2
15	1-512-010007-07	NUT, HEX 3/8-16 ZP	2
16	1-654-010049-05	SCREW HX CP 5/16-18UNCX1 GR5	2
17	1-861-010034-10	WASHER,LKG 5/16	2
18	1-512-010007-06	NUT, HEX 5/16-18	2
19	25079	MOUNTING PLATE	6
20	105-0214	TY-WRAP 1/16-1-1/8 TY-524MX	6
21	165622	HARNESS-MAKEUP, ACRE METER	1
22	7K246	BRACKET	1
23	3P153	ANGLE, ACRE METER	1
24	185991	BRACKET	1
25	5K714	BRACKET (WITHOUT CLUTCH)	1
26	1-654-010049-06	H/CAP, 5/16-18UNC X 1-1/4	2
27	1-861-010032-08	WASHER, FLAT 5/16 ZP	2

Electronic Acre Meter Installations

Kit 5K275 Installation

For 8' -12' Seeder Models using Transmissions with Clutches.

The acre meter consists of three main parts; the acre meter, the pickup switch, and the magnet wheel.

- 1. Use the acre meter bracket as a guide and drill two 13/32" holes into seedbox at location shown in illustration.

- 2. Then attach the acre meter bracket as shown with two 3/8-16 x 1" capscrews, lock washers and nuts.
- 3. Attach the 5K332 pickup switch bracket to the 5K209 clutch support bracket with two #10-24 x 3/4" machine screws, lock washers and nuts. **Do not tighten screws at this time.**
- 4. Attach the pickup switch to the top of the 5K332 bracket with two #8-32 x 1 1/4" machine screws, flat washers, lock washers, and nuts. **Do not tighten screws at this time.**
- 5. Kit 5K275 is used on Transmissions with Clutches.
- 6. 5K209 Clutch Support Bracket is part of the Transmission assembly

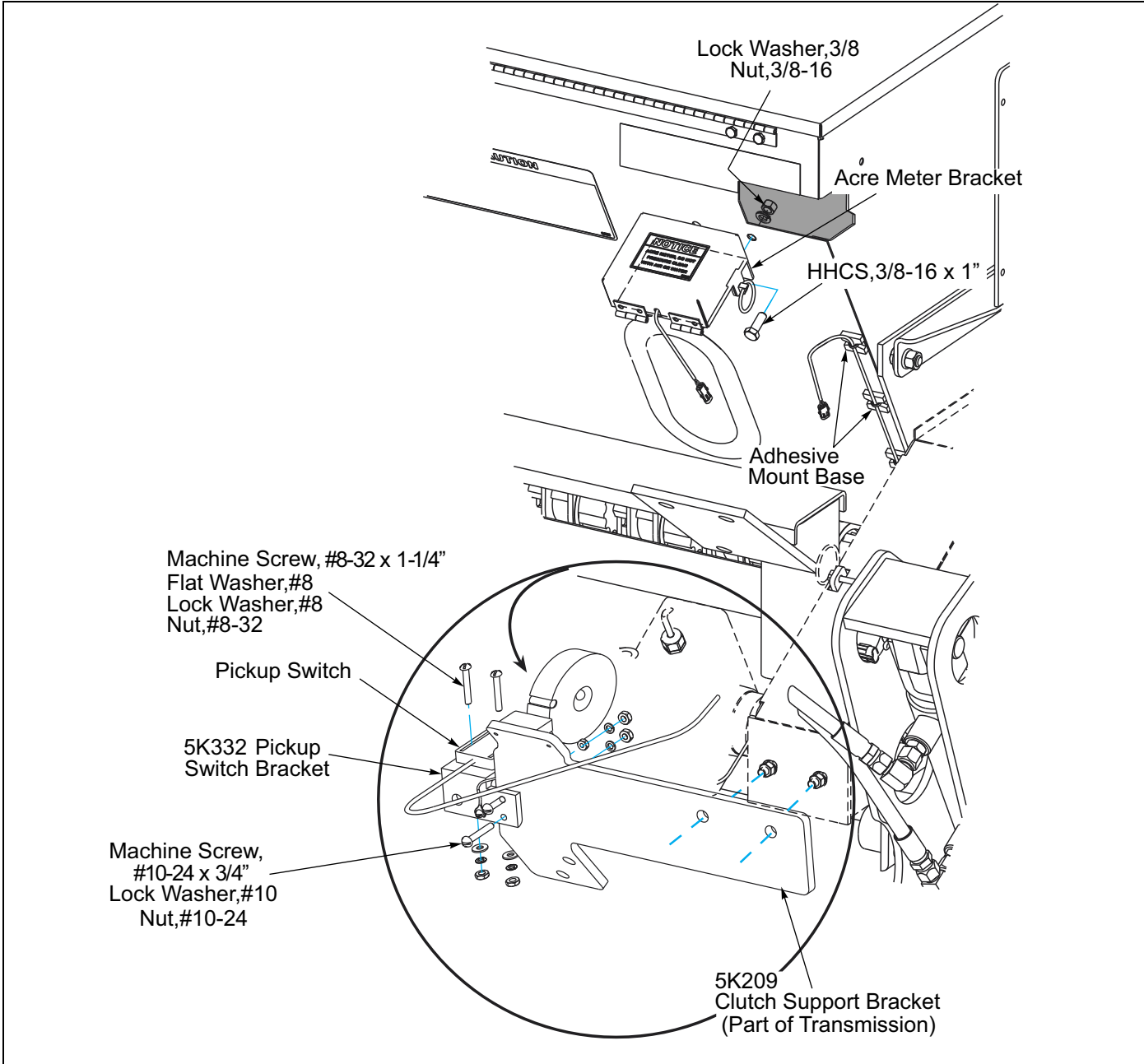


Figure 1-4: Kit 5K275 (1 of 2)

ACRE METER

- Press the magnet wheel onto the clutch shaft until it is vertically centered with pick up switch.
 - Adjust the pickup switch and bracket so the center line of magnet wheel and pickup switch are horizontally and vertically aligned with a maximum 1/8" between magnet wheel and pickup switch. Now firmly tighten all screws.
- NOTE**
Alignment of pickup switch and magnet wheel is critical. Improper alignment will cause the acre counter to record acres erratically or not at all.
- Attach the short pickup switch ground wire to the small hole in the 5K332 bracket with a #6-32 x 1/2" machine screw, removing paint under the wire connector to assure a good electrical ground connection.
 - Route the wire from the acre meter down the front of the seed box to the pickup switch and connect the mating plugs.
 - Securely fasten the wire to seed box and transmission drive using the adhesive mounting bases and wire ties to prevent wire from rubbing or becoming entangled.
 - Program acre counter following the instructions on page 1-2.

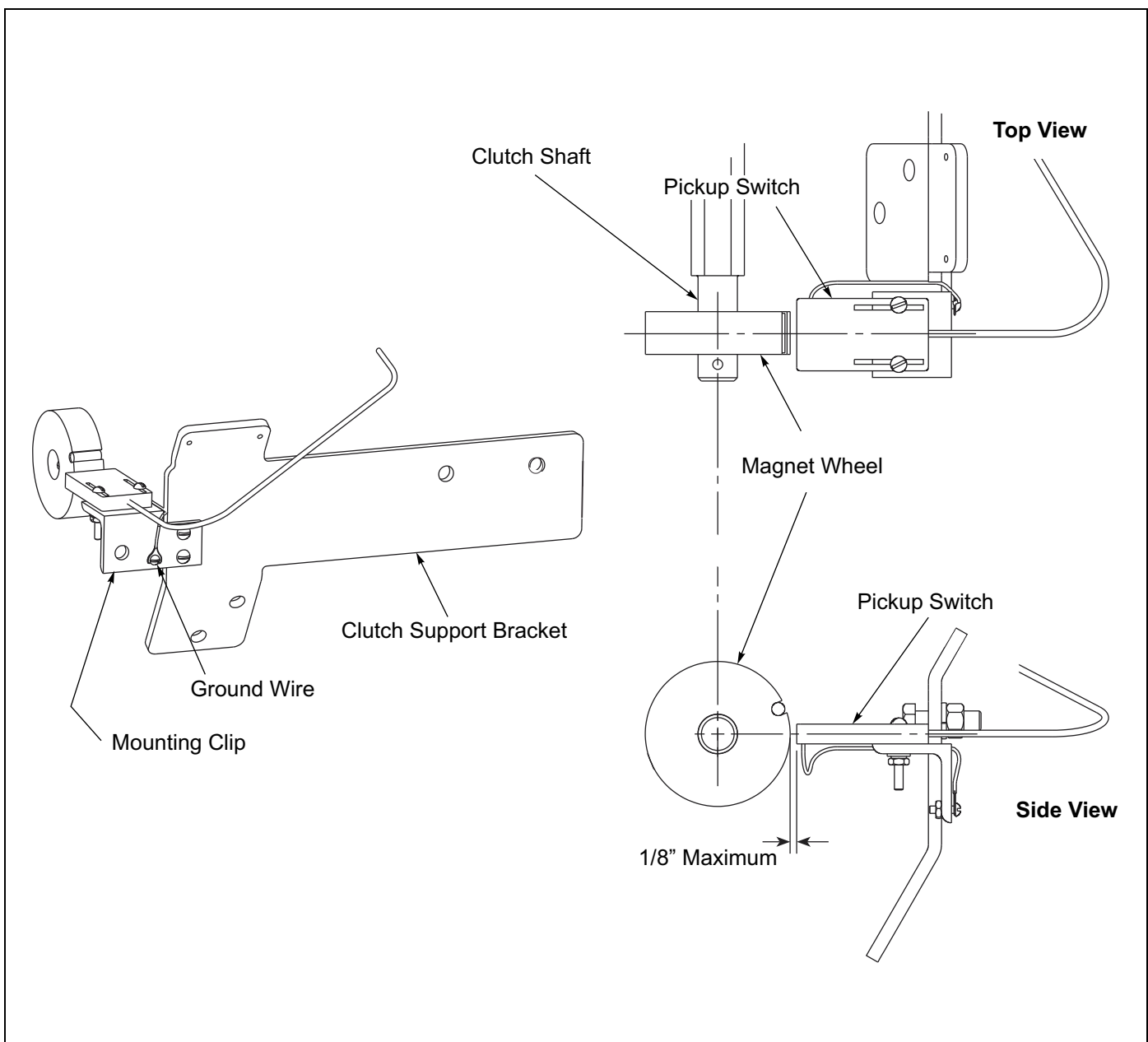


Figure 1-5: Kit 5K275 (2 of 2)

Kit 5K745 Installation

For Models using Transmissions without Clutches.

The acre meter consists of three main parts; the acre meter, the pickup switch, and the magnet wheel.

1. Use the acre meter bracket as a guide and drill two 13/32" holes into seedbox at location shown in illustration.
2. Then attach the acre meter bracket as shown with two 3/8-16 x 1" capscrews, lock washers and nuts.

3. 5K714 Bracket is bolted to the Transmission with 3/8-16 x 1-1/4 capscrews, lockwashers and nuts. **Do not tighten screws at this time.**
4. Attach the pickup switch to the top of the 5K714 bracket with two #8-32 x 1 1/4" machine screws, flat washers, lock washers and nuts. **Do not tighten screws at this time.**
5. Kit 5K745 is used on Transmissions without Clutches.

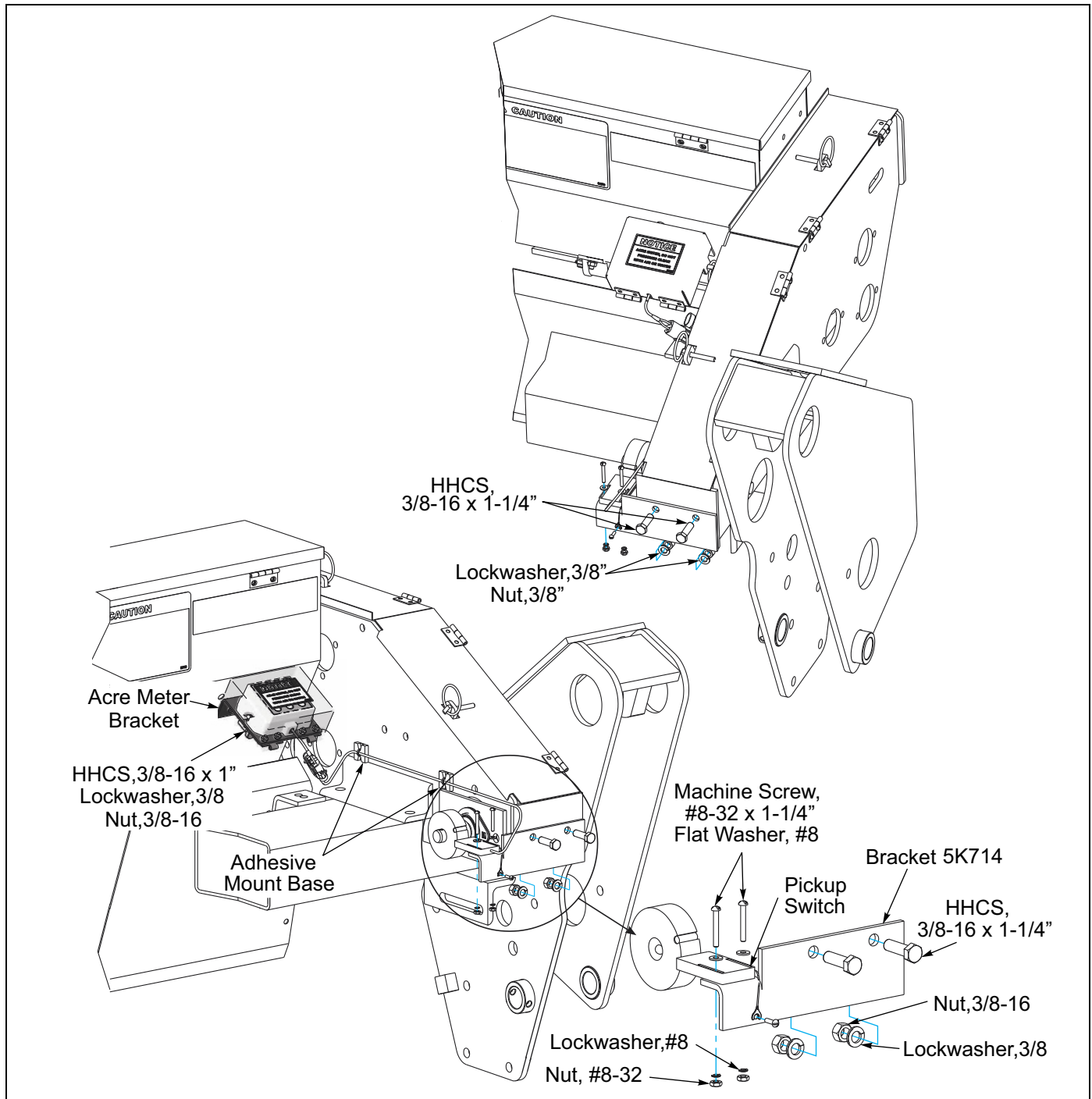


Figure 1-6: Kit 5K745 (1 of 2)

ACRE METER

- Press the magnet wheel onto the clutch shaft until it is vertically centered with pickup switch.
 - Adjust the pickup switch and bracket so the center line of magnet wheel and pickup switch are horizontally and vertically aligned with a maximum 1/8" between magnet wheel and pickup switch. Now firmly tighten all screws.
- NOTE**
- Alignment of pickup switch and magnet wheel is critical. Improper alignment will cause the acre counter to record acres erratically or not at all.*
- Attach the short pickup switch ground wire to the small hole in the 5K714 bracket with a #6-32 x 1/2" machine screw, removing paint under the wire connector to assure a good electrical ground connection.
 - Route the wire from the acre meter down the front of the seed box to the pickup switch and connect the mating plugs.
 - Securely fasten the wire to seed box and transmission drive using the adhesive mounting bases and wire ties to prevent wire from rubbing or becoming entangled in moving parts.
 - Program acre counter following the instructions on page 1-2.

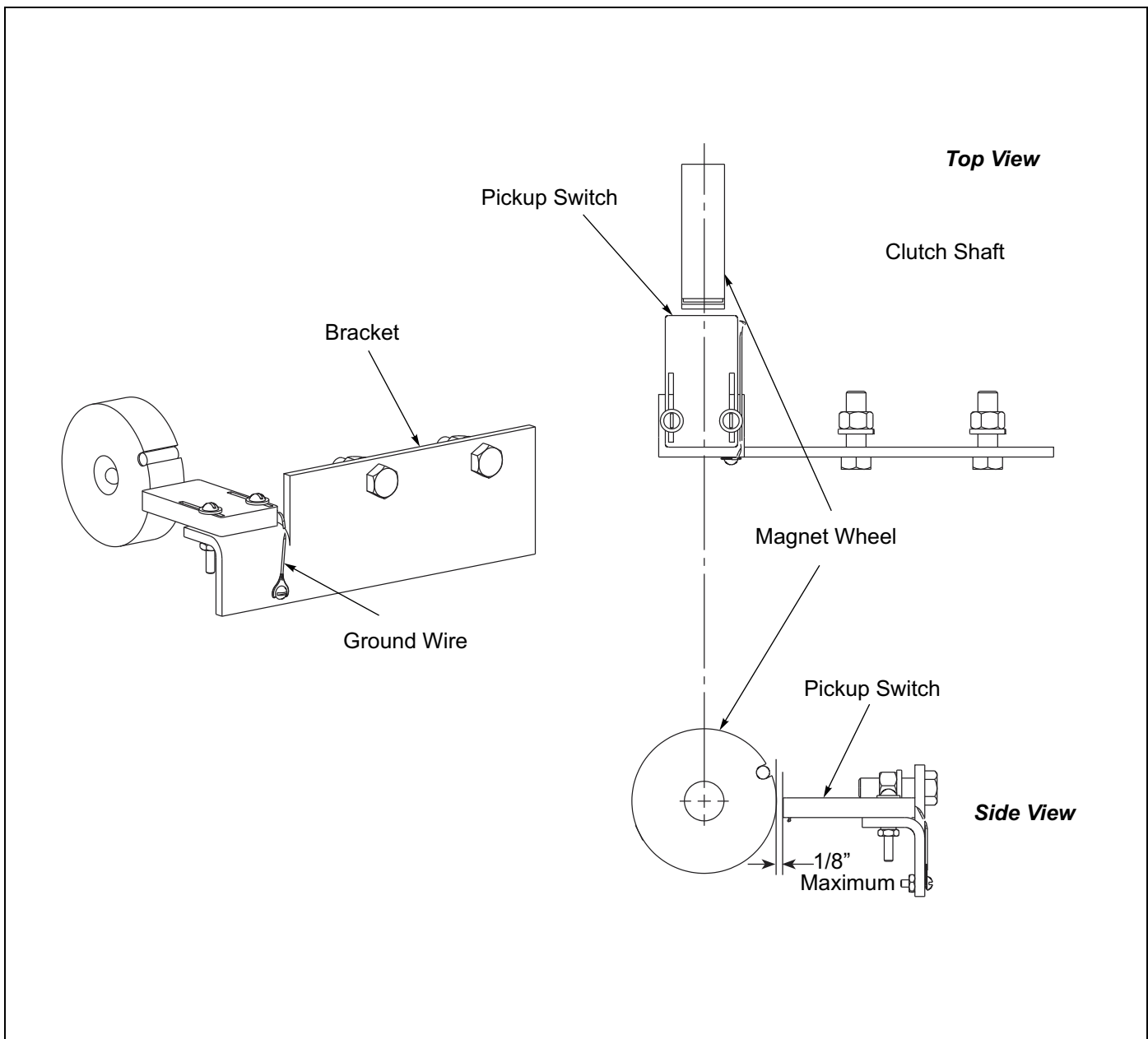


Figure 1-7: Kit 5K745 (2 of 2)

Kit 6K036 Installation

For 4', 5', and 6' Seeder Models.

The acre meter consists of three main parts; the acre meter, the pickup switch, and the magnet wheel.

- 1. Use the acre meter bracket as a guide and drill two 13/32" holes into seedbox at location shown in illustration.
- 2. Then attach the acre meter bracket as shown with two 3/8-16 x 1" capscrews, lock washers and nuts.

- 3. Unlatch and swing open the transmission guard shield on the left side of the machine. (Be sure to re-close and latch securely when you have finished acre meter installation).
- 4. Use the 5/16 x 1-1/4" capscrews, lock washers, flat washers and nuts to attach the 185991 pickup switch bracket. Install it on the rear inside surface of the left side frame end plate. **Do not tighten screws at this time.**

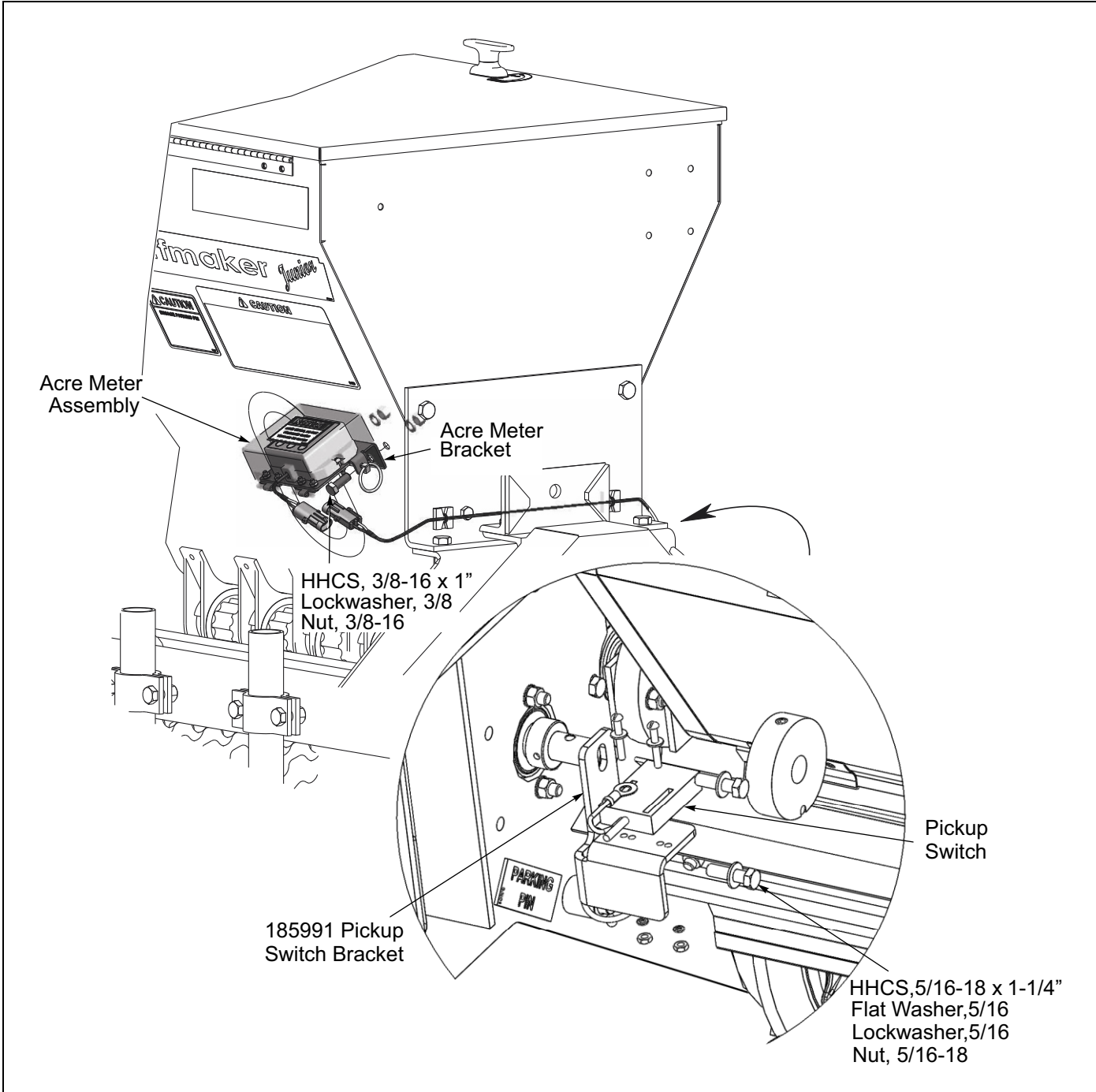


Figure 1-8: Kit 6K036 (1 of 2)

ACRE METER

- Attach the pickup switch to the top of the 185991 bracket with two #8-32 x 1 1/4" machine screws, flat washers, lock washers, and nuts. **Do not tighten screws at this time.**
 - Press the magnet wheel onto the idler shaft until it is vertically centered with pickup switch.
- NOTE**
- Alignment of pickup switch and magnet wheel is critical. Improper alignment will cause the acre counter to record acres erratically or not at all.*
- Adjust the pickup switch and bracket so the center line of magnet wheel and pick up switch are horizontally and vertically aligned with a maximum 1/8" between magnet wheel and pickup switch. Now firmly tighten all screws.
 - Attach the short pickup switch ground wire to the small hole in the 185991 bracket with a #6-32 x 1/2" machine screw, removing paint under the wire connector to assure a good electrical ground connection.
 - Route the wire from the acre meter down the front of the seed box and around the outside of the end bracket to the pickup switch and connect the mating plugs.
 - Securely fasten the wire to seed box and end bracket using the adhesive mounting bases and wire ties to prevent wire from rubbing or becoming entangled in moving parts.
 - Program acre counter following the instructions on page 1-2.

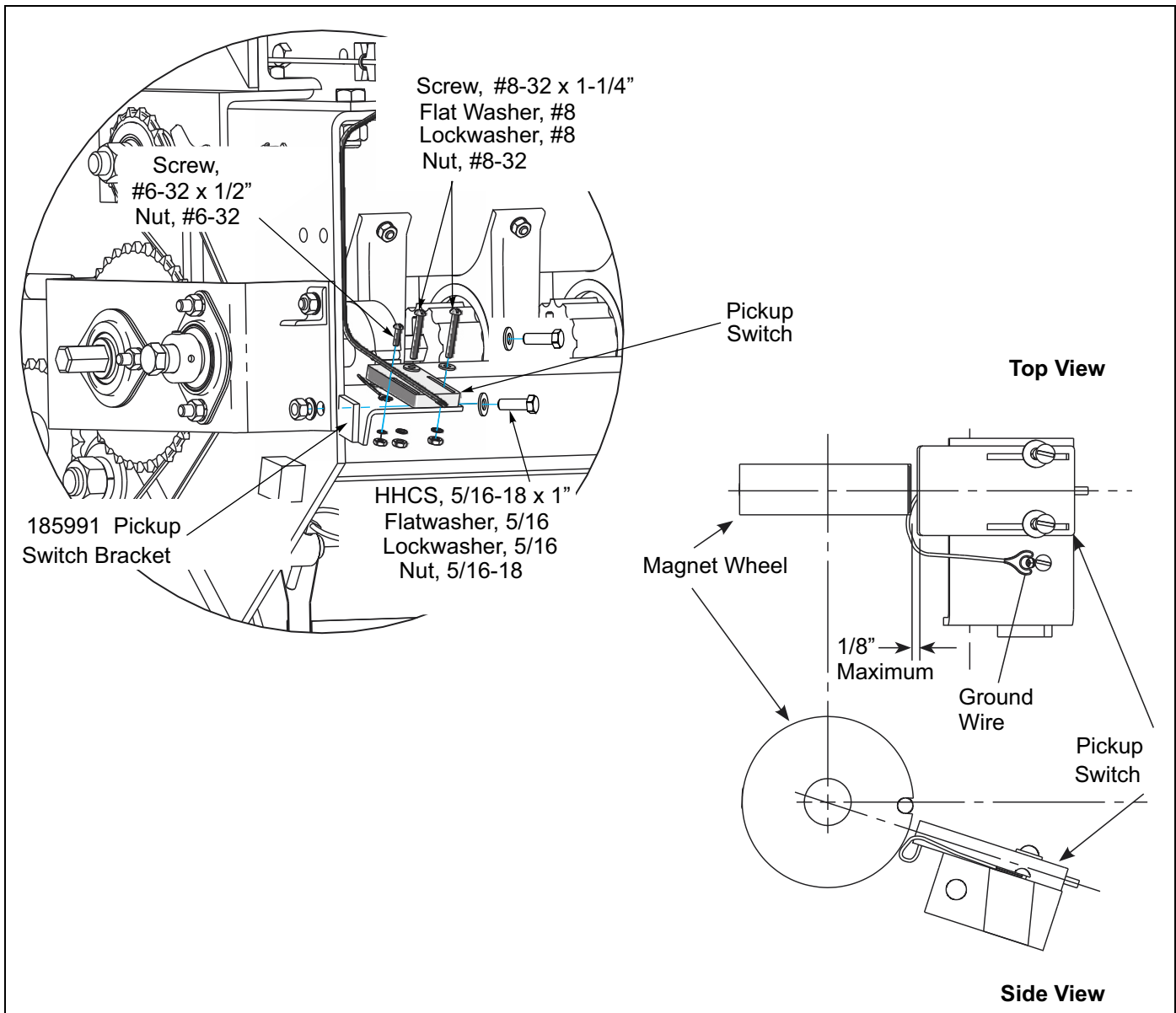


Figure 1-9: Kit 6K036 (2 of 2)

Kit 7K250 Installation

For Models: BOS-4F1, BOS-4S1, BOS-6F1, BOS-6S1
BOSB-4F1, BOSB-4S1, BOSB-6F1, BOSB-6S1

The acre meter consists of three main parts; the acre meter, the pickup switch, and the magnet wheel.

1. Use the acre meter bracket as a guide and drill two 13/32" holes into seedbox at location shown in illustration.
2. Then attach the acre meter bracket as shown with two 3/8-16 x 1" capscrews, lock washers and nuts.
3. Fasten the 7K246 pickup switch bracket to the end plate on the left side of the seeder, as shown, with 5/16 x 1" capscrews, lock washers and nuts. **Do not tighten screws at this time.**
4. Attach the pickup switch to the end of the 7K246 bracket with two #8-32 x 1 1/4" machine screws, flat washers, lock washers, and nuts. **Do not tighten screws at this time.**

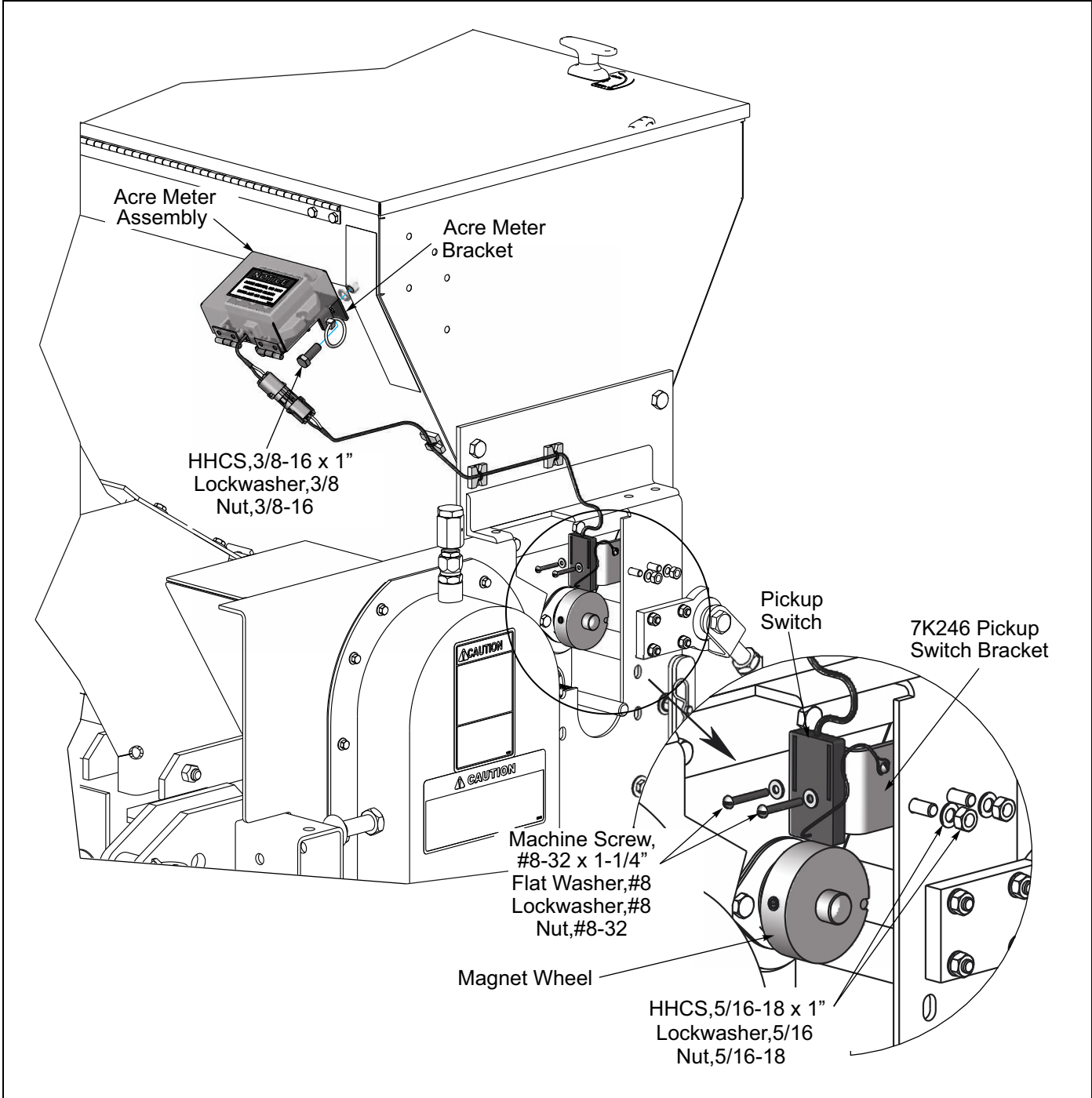


Figure 1-10: Kit 7K250 (1 of 2)

ACRE METER

5. Press the magnet wheel onto the idler shaft until it is vertically centered with the pickup switch.
6. Adjust the pickup switch and bracket so the center line of magnet wheel and pickup switch are horizontally and vertically aligned with a maximum 1/8" between magnet wheel and pickup switch. Now firmly tighten all screws.
7. Attach the short pickup switch ground wire to the small hole in the 7K246 bracket with a #6-32 x 1/2" machine screw, removing paint under the wire connector to assure a good electrical ground connection.
8. Route the wire from the acre meter down the front of the seed box and around the outside of the end bracket to the pickup switch and connect the mating plugs.
9. Securely fasten the wire to seed box and end bracket using the adhesive mounting bases and wire ties to prevent wire from rubbing or becoming entangled in moving parts.
10. Program acre counter following the instructions on page 1-2.

NOTE

Alignment of pickup switch and magnet wheel is critical. Improper alignment will cause the acre counter to record acres erratically or not at all.

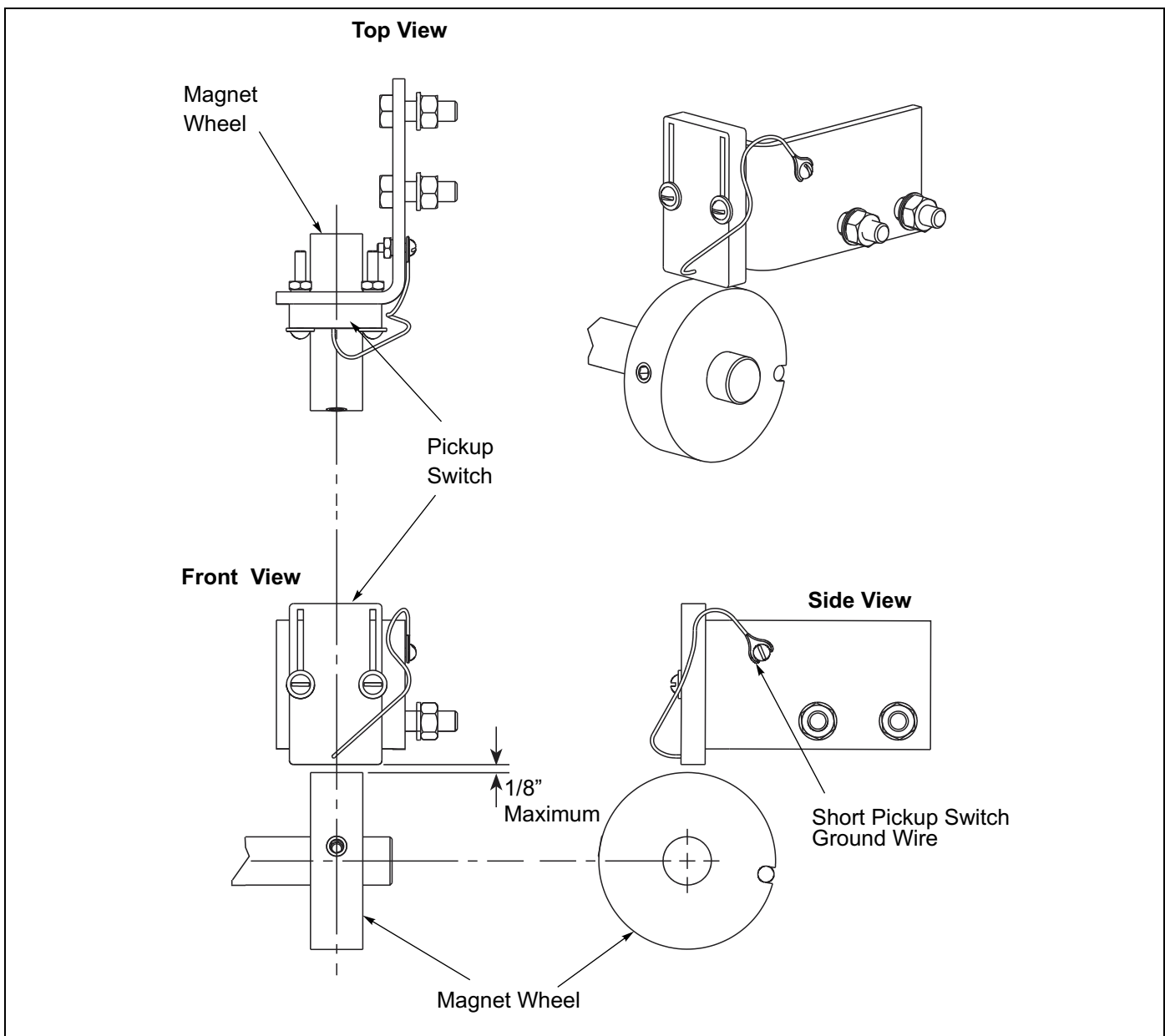


Figure 1-11: Kit 7K250 (2 of 2)

Kit 3P099 Installation

For Models: BPS6 and BPSB6

The Acre Meter Kit consists of three main parts; acre meter assembly, pickup switch, and magnet wheel.

1. Remove 3/8-16 Hardware from Acre Meter Assembly. Use the Acre Meter Bracket as a guide and drill two 13/32" holes into the seedbox. Insert hardware and tighten.
2. Attach the Pickup Switch Bracket to the Lower Frame with 5/16-18 Hardware.
3. Attach the Pickup Switch to Bracket with #8-32 Hardware. **Do not tighten at this time.**
4. Attach ground wire with #6-32 Hardware, removing paint under the wire connector to assure a good electrical ground connection.

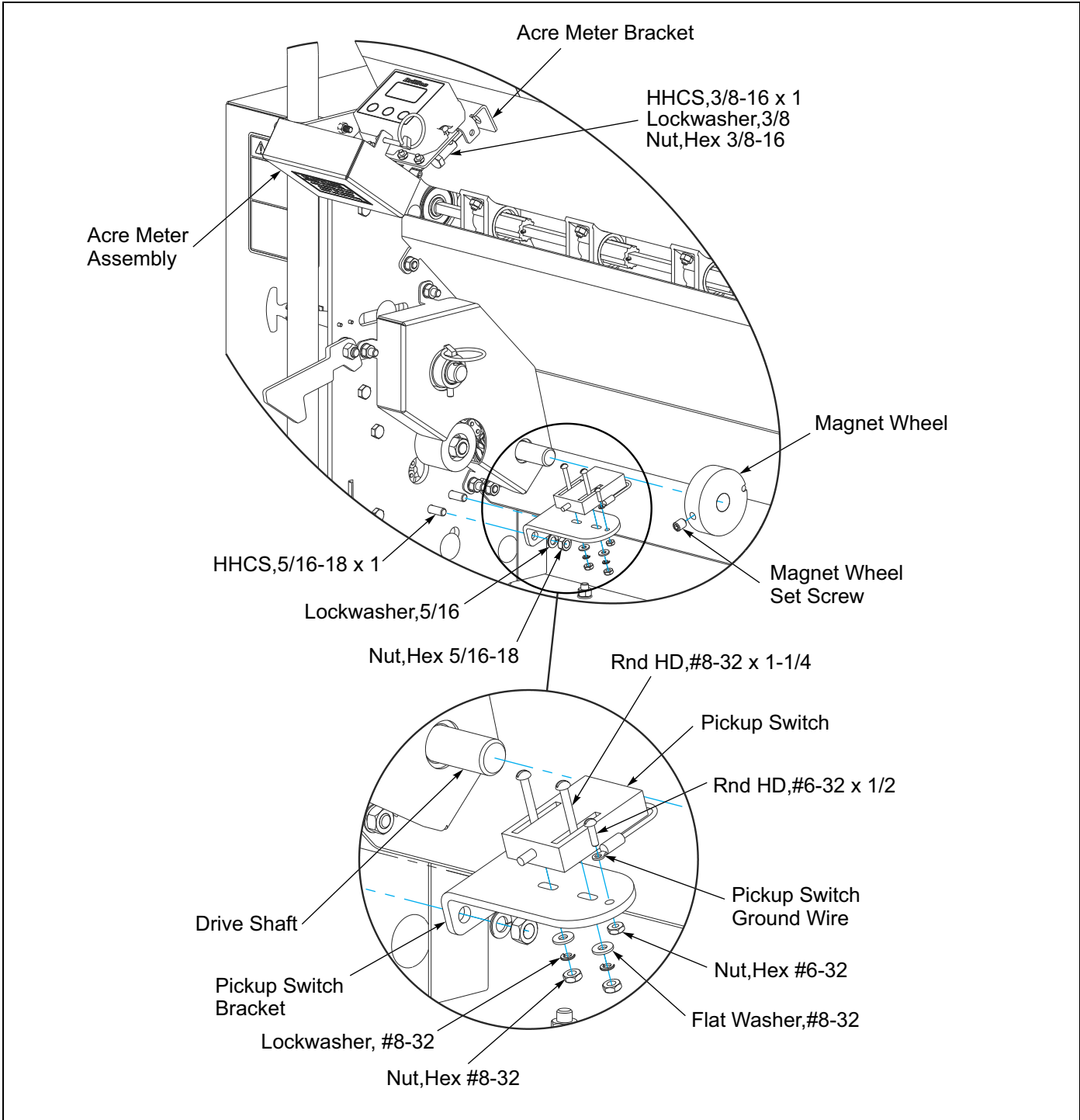


Figure 1-12: Kit 3P099 (1 of 2)

ACRE METER

5. Press or slide Magnet Wheel onto Drive Shaft until it is vertically centered with the Pickup Switch.
6. Adjust the Pickup Switch so the center line of Magnet Wheel and Pickup Switch are horizontally and vertically aligned with a maximum 1/8" gap between them. Now firmly tighten Switch to bracket and tighten set screw (if present) in Wheel.
7. Route Pickup Switch Cable up to the Acre Meter Cable and connect mating plugs.
8. Securely fasten cable to frame using the adhesive Cable Tie Mounting Base and Cable Ties to prevent cable from rubbing or becoming entangled in moving parts.
9. Program acre counter following the instructions on page 1-2.

NOTE

Alignment of Pickup Switch and Magnet Wheel is critical. Improper alignment will cause the Acre Meter to record acres erratically or not at all.

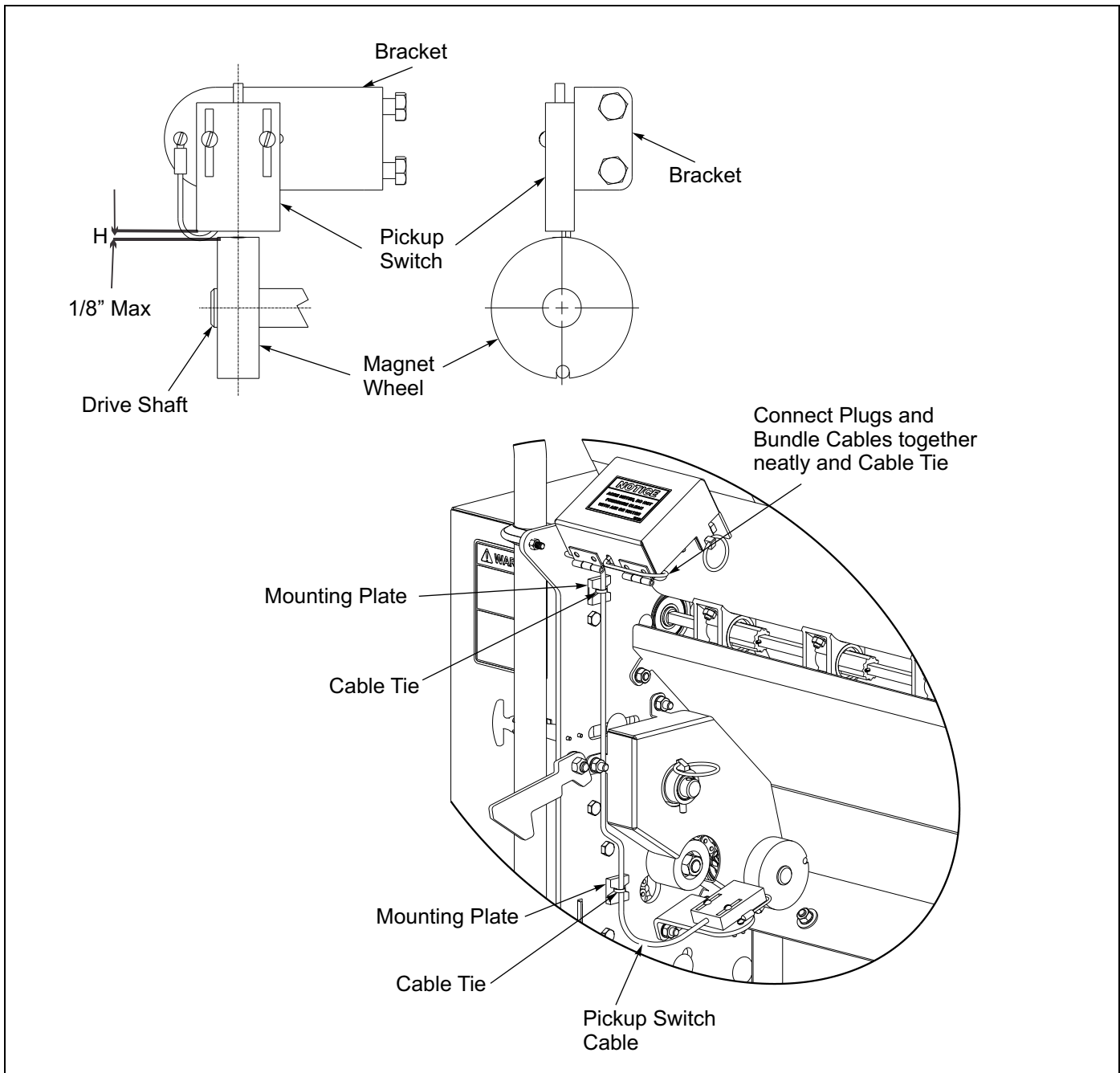


Figure 1-13: Kit 3P099 (2 of 2)

Document Control Revision Log:

Date	Revision	Improvement(s) Description and Comments
12/2005		Initial Release
01/2012	1205rev0112	Improved Pictures, Translated to Landoll Format
06/2012	1205rev0612	Incorporated ECN 36074, New Acre Meter
11/2013	1205rev1113	Updated Drawings
09/2014	1205rev0914	Incorporated ECN 38851



Intertek

Equipment from Landoll Corporation is built to exacting standards ensured by ISO 9001 registration at all Landoll manufacturing facilities.

Electronic Acre Meter Kit Operator's & Parts Manual

Re-Order Part Number 9K742

LANDOLL CORPORATION

1900 North Street

Marysville, Kansas 66508

(785) 562-5381

800-428-5655 ~ WWW.LANDOLL.COM



Copyright 2014. Landoll Corporation

"All rights reserved, including the right to reproduce this material or portions thereof in any form."