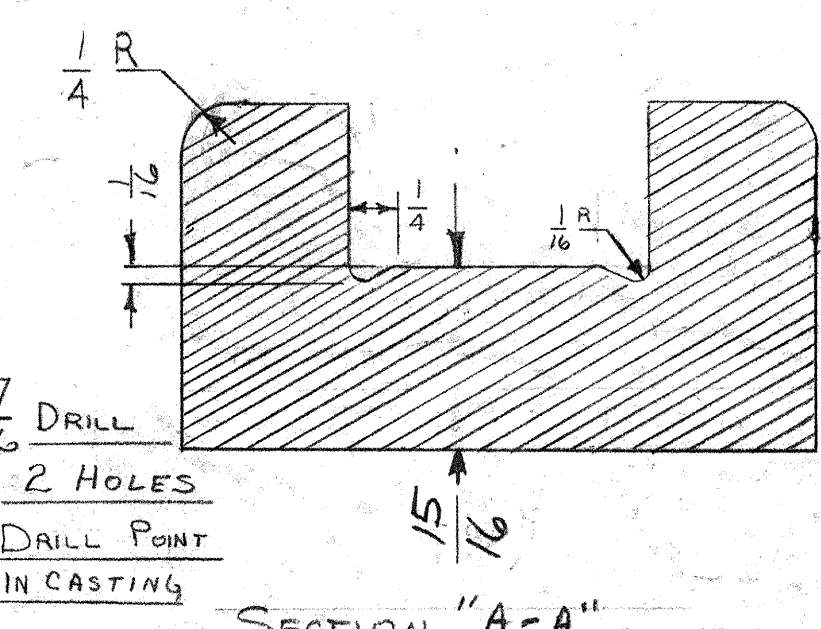
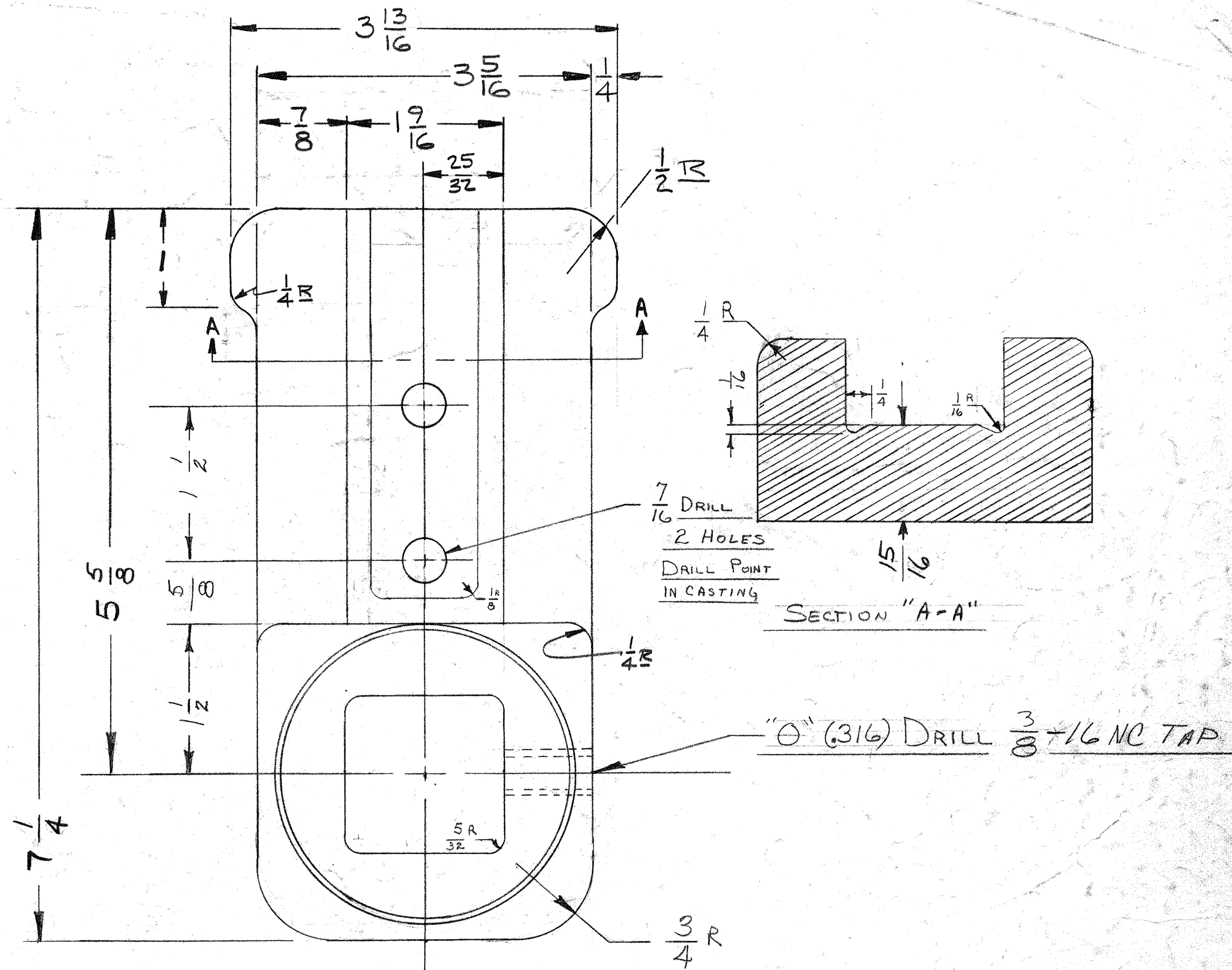
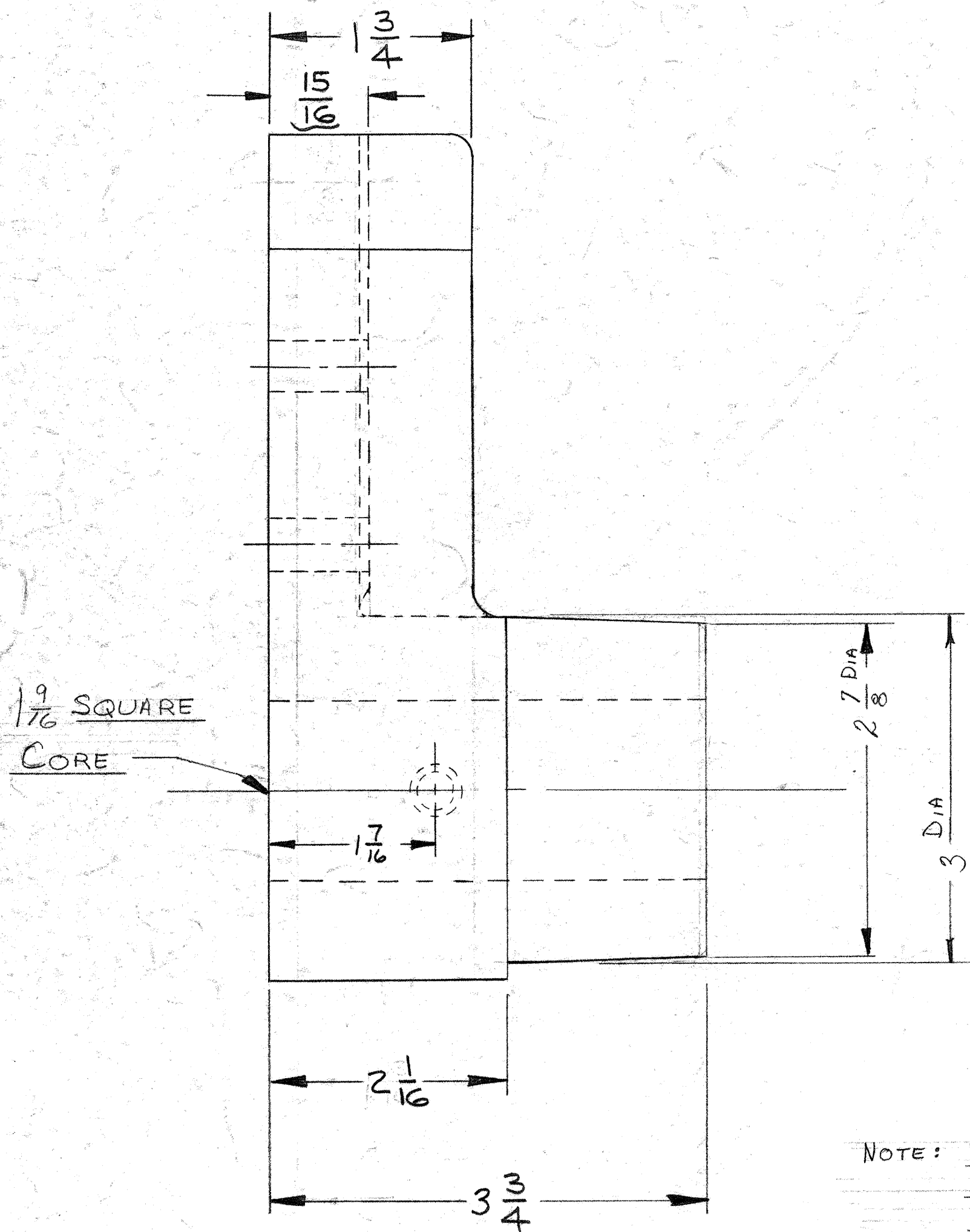


7C-259



NOTE: BEARING SURFACE MUST BE SMOOTH & FREE OF ALL IRREGULARITIES. SQUARE CORE MUST BE IN POSITION SHOWN HERE.

PATTERN NUMBER 7C-259
MATERIAL: GRAY IRON 145B
④

PAINT: RED

UNSPECIFIED TOLERANCES	
O.A.L. & PUNCHED HOLE CNTRS	± 1/32
HOLE CNTRS, DRILLED	± 1/64 OR 1°
OTHER DECIMAL	± .010
OTHER FRACTIONAL	± 1/64
TOOL RAD. 1/32	CHAMFER 1/32 x 45°

REVISIONS		DATE		BY	
1	DESIGNED	9-9-58			
2	DRAWN	9-24-58			
3	WAS REWORKED	10-1-58			
4	TENSILE STRENGTH	10-1-58			

BRILLION IRON WORKS, INC. BRILLION, WIS.	
CENTER BEARING	
SCALE	FULL
DATE	1-22-58
DRAWN	PAGEL
APPR.	

7C-259

63-140