

HD0936

- 1 3/16" x 3 1/8" Class II hook type solid fork lift tines
- 900 lbs capacity @ 21" L.C.
- Sliding adjustable
- Tines can be locked in any position
- 50" wide carriage

Light Duty Pallet Fork	Tine Length	Weight	Part #	Price Code			
				A	B	C	D
900 LB Capacity		in lbs					
Light Duty Pallet Fork c/w Tines	36"	190	HD0936	\$909.00	\$1,025.00	\$1,141.00	
Light Duty Pallet Fork c/w Tines	42"	205	HD0942	\$934.00	\$1,050.00	\$1,166.00	
Light Duty Pallet Fork c/w Tines	48"	215	HD0948	\$983.00	\$1,099.00	\$1,215.00	
Carriage Only Less Tines			HD09	\$580.00	\$696.00	\$812.00	



HD1242

- 1 3/16" x 3 1/8" Class II hook type solid fork lift tines
- 1200 lbs capacity @ 24" L.C.
- Sliding adjustable
- Tines can be locked in any position
- 50" wide carriage

Light Duty Pallet Fork	Tine Length	Weight	Part #	Price Code			
				A	B	C	D
1200 LB Capacity		in lbs					
Light Duty Pallet Fork c/w Tines	36"	285	HD1236	\$989.00	\$1,105.00	\$1,221.00	
Light Duty Pallet Fork c/w Tines	42"	315	HD1242	\$1,013.00	\$1,129.00	\$1,245.00	
Light Duty Pallet Fork c/w Tines	48"	325	HD1248	\$1,062.00	\$1,178.00	\$1,294.00	
Carriage Only Less Tines			HD12	\$659.00	\$775.00	\$891.00	



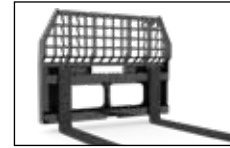
HD2042

- 1 1/2" x 3 1/8" Class II hook type solid fork lift tines
- 2000 lbs capacity @ 24" L.C.
- C/w guard
- 50" wide carriage

Heavy Duty Pallet Fork	Tine Length	Weight	Part #	Price Code			
				A	B	C	D
2000 LB Capacity		in lbs					
Heavy Duty Pallet Fork c/w Guard - Tines	36"	310	HD2036	\$1,135.00	\$1,251.00	\$1,367.00	
Heavy Duty Pallet Fork c/w Guard - Tines	42"	340	HD2042	\$1,172.00	\$1,288.00	\$1,404.00	
Heavy Duty Pallet Fork c/w Guard - Tines	48"	350	HD2048	\$1,184.00	\$1,300.00	\$1,416.00	
Carriage Only c/w Guard Less Tines			HD20	\$684.00	\$800.00	\$916.00	



- 1-3/8" x 4" Class II hook type solid fork lift tines
- 4200 lbs capacity @ 20" L.C.
- C/w guard
- 50" wide carriage
- Sliding adjustable
- Tines can be locked in any position



Full Back Guard Option (Brick Guard)
HD42BG - add \$171.00

HD4248

Heavy Duty Pallet Fork 4200 LB Capacity	Tine Length	Weight in lbs	Part #	Price Code			
				A	B	C	D
Heavy Duty Pallet Fork c/w Guard - Tines	42"	405	HD4242	\$1,306.00	\$1,422.00	\$1,538.00	\$1,685.00
Heavy Duty Pallet Fork c/w Guard - Tines	48"	425	HD4248	\$1,367.00	\$1,483.00	\$1,599.00	\$1,746.00
Carriage Only c/w Guard Less Tines			HD42	\$720.00	\$836.00	\$952.00	\$1,099.00



- 1½" x 4" Class II hook type solid fork lift tines
- 5500 lbs capacity @24" L.C.
- C/w guard
- 50" wide carriage
- Sliding adjustable
- Tines can be locked in any position



Full Back Guard Option (Brick Guard)
HD55BG - add \$202.00

HD5548

Heavy Duty Pallet Fork 5500 LB Capacity	Tine Length	Weight in lbs	Part #	Price Code			
				A	B	C	D
Heavy Duty Pallet Fork c/w Guard - Tines	42"	455	HD5542	\$1,532.00	\$1,648.00	\$1,764.00	\$1,911.00
Heavy Duty Pallet Fork c/w Guard - Tines	48"	480	HD5548	\$1,593.00	\$1,709.00	\$1,825.00	\$1,972.00
Heavy Duty Pallet Fork c/w Guard - Tines	54"	495	HD5554	\$1,776.00	\$1,892.00	\$2,008.00	\$2,155.00
Heavy Duty Pallet Fork c/w Guard - Tines	60"	515	HD5560	\$2,032.00	\$2,148.00	\$2,264.00	\$2,411.00
Heavy Duty Pallet Fork c/w Guard - Tines	72"	570	HD5572	\$2,666.00	\$2,782.00	\$2,898.00	\$3,045.00
Carriage Only c/w Guard Less Tines			HD55	\$922.00	\$1,038.00	\$1,154.00	\$1,301.00



- 1¾" x 5" Class III hook type solid fork lift tines
- 7500 lbs capacity @ 24" L.C.
- C/w guard
- 50" wide carriage
- Sliding adjustable
- Tines can be locked in any position



Full Back Guard Option (Brick Guard)
HD75BG - add \$476.00

HD7548

Heavy Duty Pallet Fork 7500 LB Capacity	Tine Length	Weight in lbs	Part #	Price Code			
				A	B	C	D
Heavy Duty Pallet Fork c/w Guard - Tines	48"	590	HD7548	\$2,599.00	\$2,715.00	\$2,831.00	\$2,978.00
Heavy Duty Pallet Fork c/w Guard - Tines	54"	620	HD7554	\$2,794.00	\$2,910.00	\$3,026.00	\$3,173.00
Heavy Duty Pallet Fork c/w Guard - Tines	60"	650	HD7560	\$3,209.00	\$3,325.00	\$3,441.00	\$3,588.00
Heavy Duty Pallet Fork c/w Guard - Tines	72"	730	HD7572	\$3,355.00	\$3,471.00	\$3,587.00	\$3,734.00
Carriage Only c/w Guard Less Tines			HD75	\$1,123.00	\$1,239.00	\$1,355.00	\$1,502.00

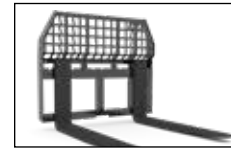
Pallet Forks



Prices Effective as of 3-24



- 2" x 6" Class III hook type solid fork lift tines
- 10,000 lbs capacity @ 24" L.C.
- C/w guard
- Sliding adjustable
- Tines can be locked in any position
- 50" wide carriage



Full Back Guard Option (Brick Guard)

HD100BG - add \$476.00

Heavy Duty Pallet Fork 10,000 LB Capacity	Tine Length	Weight in lbs	Part #	Price Code			
				A	B	C	D
Heavy Duty Pallet Fork c/w Guard - Tines	48"	690	HD10048	\$3,368.00	\$3,484.00	\$3,600.00	\$3,747.00
Heavy Duty Pallet Fork c/w Guard - Tines	54"	735	HD10054	\$3,599.00	\$3,715.00	\$3,831.00	\$3,978.00
Heavy Duty Pallet Fork c/w Guard - Tines	60"	770	HD10060	\$3,819.00	\$3,935.00	\$4,051.00	\$4,198.00
Heavy Duty Pallet Fork c/w Guard - Tines	72"	840	HD10072	\$4,893.00	\$5,009.00	\$5,125.00	\$5,272.00
Carriage Only c/w Guard Less Tines			HD100	\$1,586.00	\$1,702.00	\$1,818.00	\$1,965.00



- Rotation is powered by a cylinder for smooth and contoured operation
- Adjustable tines
- Rotates 180° for a full dump to the left

Rotating Pallet Fork	Tine Length	Weight in lbs	Part #	Price Code			
				A	B	C	D
2000 lbs Rotating Pallet Fork	42"	815	HDR2042	\$4,447.00	\$4,563.00	\$4,679.00	\$4,826.00
4200 lbs Rotating Pallet Fork	42"	825	HDR4242	\$5,966.00	\$6,082.00	\$6,198.00	\$6,345.00
4200 lbs Rotating Pallet Fork	48"	840	HDR4248	\$6,027.00	\$6,143.00	\$6,259.00	\$6,406.00
5500 lbs Rotating Pallet Fork	42"	840	HDR5542	\$6,540.00	\$6,656.00	\$6,772.00	\$6,919.00
5500 lbs Rotating Pallet Fork	48"	860	HDR5548	\$6,601.00	\$6,717.00	\$6,833.00	\$6,980.00
5500 lbs Rotating Pallet Fork	54"	880	HDR5554	\$6,784.00	\$6,900.00	\$7,016.00	\$7,163.00
2000 lbs Carriage Only Less Tines			HDR20	\$3,959.00	\$4,075.00	\$4,191.00	\$4,338.00
4200 lbs Carriage Only Less Tines			HDR42	\$5,381.00	\$5,497.00	\$5,613.00	\$5,760.00
5500 lbs Carriage Only Less Tines			HDR55	\$5,930.00	\$6,046.00	\$6,162.00	\$6,309.00
Optional 90° Hose Kit c/w Flat Faced Couplers			HK90	\$324.00			
Optional Spring Hose Mount Kit			SHMK	\$147.00			



- Rotation is powered by a cylinder for smooth operation
- Adjustable tines
- Levels 45 degrees each way
- Great for uneven job sites

Power Tilting Pallet Fork	Tine Length	Weight in lbs	Part #	Price Code			
				A	B	C	D
5500 lbs Power Tilting Pallet Fork	42"	750	HDO5542	\$7,388.00	\$7,504.00	\$7,620.00	\$7,767.00
5500 lbs Power Tilting Pallet Fork	48"	770	HDO5548	\$7,449.00	\$7,565.00	\$7,681.00	\$7,828.00
5500 lbs Power Tilting Pallet Fork	54"	790	HDO5554	\$7,632.00	\$7,748.00	\$7,864.00	\$8,011.00
7500 lbs Power Tilting Pallet Fork	48"	940	HDO7548	\$8,431.00	\$8,547.00	\$8,663.00	\$8,810.00
7500 lbs Power Tilting Pallet Fork	54"	970	HDO7554	\$8,626.00	\$8,742.00	\$8,858.00	\$9,005.00
5500 lbs Carriage Only Less Tines			HDO55	\$6,778.00	\$6,894.00	\$7,010.00	\$7,157.00
7500 lbs Carriage Only Less Tines			HDO75	\$6,954.00	\$7,070.00	\$7,186.00	\$7,333.00
Optional 90° Hose Kit c/w Flat Faced Couplers			HK90	\$324.00			
Optional Spring Hose Mount Kit			SHMK	\$147.00			



Prices and Specifications may be subject to change without notice. Prices do not include shipping or setup.



Pallet Forks



- Hydraulic carriage side shift
- 16" travel (8" right or left)
- Adjustable tines

HDS5548

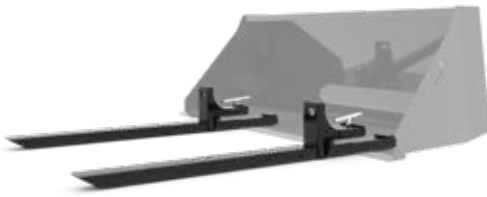
Side Shift Pallet Fork	Tine Length	Weight in lbs	Part #	Price Code			
				A	B	C	D
4200 lbs Side Shift Pallet Fork	42"	730	HDS4242	\$3,776.00	\$3,892.00	\$4,008.00	\$4,155.00
4200 lbs Side Shift Pallet Fork	48"	750	HDS4248	\$3,837.00	\$3,953.00	\$4,069.00	\$4,216.00
5500 lbs Side Shift Pallet Fork	42"	750	HDS5542	\$4,014.00	\$4,130.00	\$4,246.00	\$4,393.00
5500 lbs Side Shift Pallet Fork	48"	770	HDS5548	\$4,075.00	\$4,191.00	\$4,307.00	\$4,454.00
5500 lbs Side Shift Pallet Fork	54"	790	HDS5554	\$4,258.00	\$4,374.00	\$4,490.00	\$4,637.00
4200 lbs Carriage Only Less Tines			HDS42	\$3,191.00	\$3,307.00	\$3,423.00	\$3,570.00
5500 lbs Carriage Only Less Tines			HDS55	\$3,404.00	\$3,520.00	\$3,636.00	\$3,783.00
Optional 90" Hose Kit c/w Flat Faced Couplers			HK90	\$324.00			
Optional Spring Hose Mount Kit			SHMK	\$147.00			



- Hydraulic sliding tines
- Ideal for clamping (Such as a root ball in nurseries etc.)
- Hydraulic powered tines move in and out equally

HDN7554

Power Tine Pallet Fork	Tine Length	Weight in lbs	Part #	Price Code			
				A	B	C	D
4200 lbs Power Tine Pallet Fork	42"	680	HDN4242	\$3,862.00	\$3,978.00	\$4,094.00	\$4,241.00
4200 lbs Power Tine Pallet Fork	48"	700	HDN4248	\$3,929.00	\$4,045.00	\$4,161.00	\$4,308.00
5500 lbs Power Tine Pallet Fork	42"	680	HDN5542	\$4,081.00	\$4,197.00	\$4,313.00	\$4,460.00
5500 lbs Power Tine Pallet Fork	48"	700	HDN5548	\$4,142.00	\$4,258.00	\$4,374.00	\$4,521.00
5500 lbs Power Tine Pallet Fork	54"	720	HDN5554	\$4,179.00	\$4,295.00	\$4,411.00	\$4,558.00
7500 lbs Power Tine Pallet Fork	48"	810	HDN7548	\$6,137.00	\$6,253.00	\$6,369.00	\$6,516.00
7500 lbs Power Tine Pallet Fork	54"	840	HDN7554	\$6,326.00	\$6,442.00	\$6,558.00	\$6,705.00
7500 lbs Power Tine Pallet Fork	60"	865	HDN7560	\$6,954.00	\$7,070.00	\$7,186.00	\$7,333.00
Optional 90" Hose Kit c/w Flat Faced Couplers			HK90	\$324.00			
Optional Spring Hose Mount Kit			SHMK	\$147.00			



- Adaptable to most buckets
- No tools or bolts needed

BFT6544 (bucket not included)

Bucket Pallet Fork	Size	Weight	UOM	Part #	Price
1000 LB Bucket Pallet Fork c/w Hardware	3" x 2" x 32" Long	78 lbs	set	BFT3532	\$610.00
2000 LB Bucket Pallet Fork c/w Hardware	4" x 2" x 44" Long	143 lbs	set	BFT6544	\$781.00



Pallet Forks



Prices Effective as of 3-24



LGSA

- Removable log grapple for pallet forks
- Clamps onto Class II or III fork frame (walk through guards only)
- C/w Hydraulic cylinder

Single Arm Log Grapple	Weight in lbs	Part #	Price
Single Arm Log Grapple To Fit Class II Rail (HD20, HD42, HD55)	195	LGSA	\$1,690.00
Single Arm Log Grapple To Fit Class III Rail (HD75, HD100)	205	LGSAC3	\$1,971.00



LG5542

- Grapple version of HD55/HD75 pallet fork
- 42" solid fork lift tines
- 5500/7500 lbs capacity
- C/w HD Cylinders

Log Grapple	Weight in lbs	Part #	Price Code			
			A	B	C	D
Log Grapple Mounted On HD55 Pallet Fork c/w Cylinders & 42" Tines	800	LG5542	\$3,837.00	\$3,953.00	\$4,069.00	\$4,216.00
Log Grapple Mounted On HD55 Pallet Fork c/w Cylinders & 48" Tines	820	LG5548	\$3,898.00	\$4,014.00	\$4,130.00	\$4,277.00
Log Grapple Mounted On HD75 Pallet Fork c/w Cylinders & 48" Tines	1030	LG7548	\$5,881.00	\$5,997.00	\$6,113.00	\$6,260.00
Log Grapple Mounted On HD75 Pallet Fork c/w Cylinders & 54" Tines	1060	LG7554	\$6,076.00	\$6,192.00	\$6,308.00	\$6,455.00
Optional Mesh Guard		LGGU	\$592.00			
Optional 90" Hose Kit c/w Flat Faced Couplers		HK90	\$324.00			
Optional Spring Hose Mount Kit		SHMK	\$147.00			



HDEX6 (fork not included)



HDNEX6 (fork not included)

Standard Extensions

- Fits HD42 & HD55 forks

Nursery extensions

- With angle pad for gentle clamping of root balls, etc
- NOTE: Tine extensions reduce the capacity of your pallet fork

Pallet Fork Tine Extensions	Weight	UOM	Part #	Price
6' Standard Pallet Fork Tine Extensions	181 lbs	set	HDEX6	\$903.00
8' Standard Pallet Fork Tine Extensions	238 lbs	set	HDEX8	\$1,208.00
6' Nursery Pallet Fork Tine Extensions	210 lbs	set	HDNEX6	\$891.00
7' Nursery Pallet Fork Tine Extensions	244 lbs	set	HDNEX7	\$1,037.00



Prices and Specifications may be subject to change without notice. Prices do not include shipping or setup.

Tines



Prices Effective as of 3-24

Tines	UOM	Part #	Price
36" Tine For HD09 & HD12 Pallet Fork	ea	HD0936	\$165.00
42" Tine For HD09 & HD12 Pallet Fork	ea	HD0942	\$177.00
48" Tine For HD09 & HD12 Pallet Fork	ea	HD0948	\$202.00
36" Tine For HD20 Pallet Fork	ea	HD236	\$226.00
42" Tine For HD20 Pallet Fork	ea	HD242	\$244.00
48" Tine For HD20 Pallet Fork	ea	HD248	\$251.00
42" Tine For HD42 Pallet Fork	ea	HD442	\$293.00
48" Tine For HD42 Pallet Fork	ea	HD448	\$324.00
42" Tine For HD55 Pallet Fork	ea	HD542	\$305.00
48" Tine For HD55 Pallet Fork	ea	HD548	\$336.00
54" Tine For HD55 Pallet Fork	ea	HD554	\$427.00
60" Tine For HD55 Pallet Fork	ea	HD560	\$556.00
72" Tine For HD55 Pallet Fork	ea	HD572	\$873.00
48" Tine For HD75 Pallet Fork	ea	HD748	\$739.00
54" Tine For HD75 Pallet Fork	ea	HD754	\$836.00
60" Tine For HD75 Pallet Fork	ea	HD760	\$1,044.00
72" Tine For HD75 Pallet Fork	ea	HD772	\$1,117.00
48" Tine For HD100 Pallet Fork	ea	HD1048	\$891.00
54" Tine For HD100 Pallet Fork	ea	HD1054	\$1,007.00
60" Tine For HD100 Pallet Fork	ea	HD1060	\$1,117.00
72" Tine For HD100 Pallet Fork	ea	HD1072	\$1,654.00



Prices and Specifications may be subject to change without notice. Prices do not include shipping or setup.