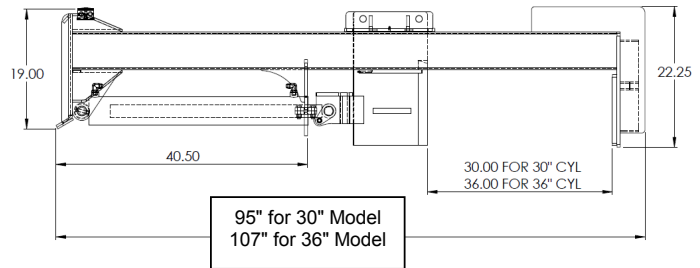


Log Splitter

30" Model #33018

36" Model #33187



Specifications

Width	45-3/8"
Height	22"
Length	33018 = 95" 33187 = 107"
Weight	30" 630 lbs, 36" 680 lbs

Durable construction for years of use

Inverted style allows you to split while staying seated

20 tons of force

4" psi cylinders

Constructed of Grade 50 Steel

Comes standard with single splitting wedge, if 4 way wedge is wanted please specify at time of order

Painted using a 2 part Urethane process for an exceptional finish

LOG SPLITTER		RETAIL	WEIGHT
33187	36" Log Splitter	\$3650.00	694
33187-4WAY	4-Way Adapter	\$97.00	25